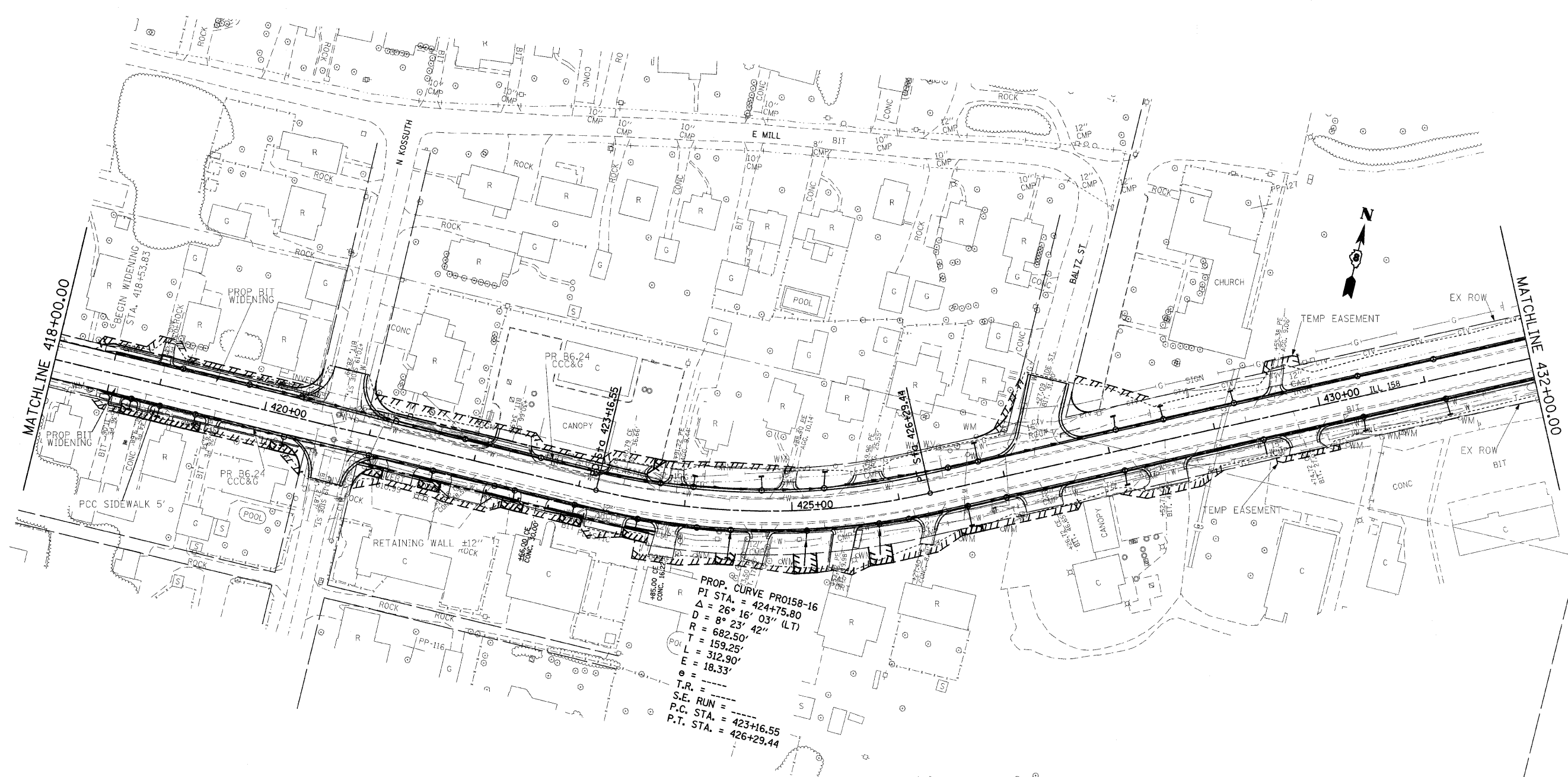
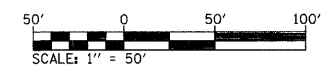


F.A.P. RTE.	SECTION	COUNTY	TOTAL SHEETS	SHEET NO.
809	(133,134)RS-5,135RS-6	ST. CLAIR	762	88
STA. 418+00		TO STA. 432+00		
FED. ROAD DIST. NO. ILLINOIS FED. AID PROJECT				



PROP. CURVE PR0158-16
 PI STA. = 424+75.80
 $\Delta = 26^\circ 16' 03''$ (LT)
 $D = 8^\circ 23' 42''$
 $R = 682.50'$
 $T = 159.25'$
 $L = 312.90'$
 $E = 18.33'$
 $e =$
 $T.R. =$
 $S.E. RUN =$
 P.C. STA. = 423+16.55
 P.T. STA. = 426+29.44



REVISIONS	
NAME	DATE

ILLINOIS DEPARTMENT OF TRANSPORTATION
PLAN SHEETS
 FAP ROUTE 809 (IL RTE. 158)
 SECTION (133, 134)RS-5, 135RS-6
 ST. CLAIR COUNTY

SCALE: VERT. _____
 HORIZ. _____
 DATE _____
 DRAWN BY _____
 CHECKED BY _____

PLOT DATE = 4/27/2010
 FILE NAME = c:\pva\work\FWID01\KARLASAL\018727A\p1d0192a.dgn
 PLOT SCALE = 50.0000 / 1 IN.
 USER NAME = KarLasal