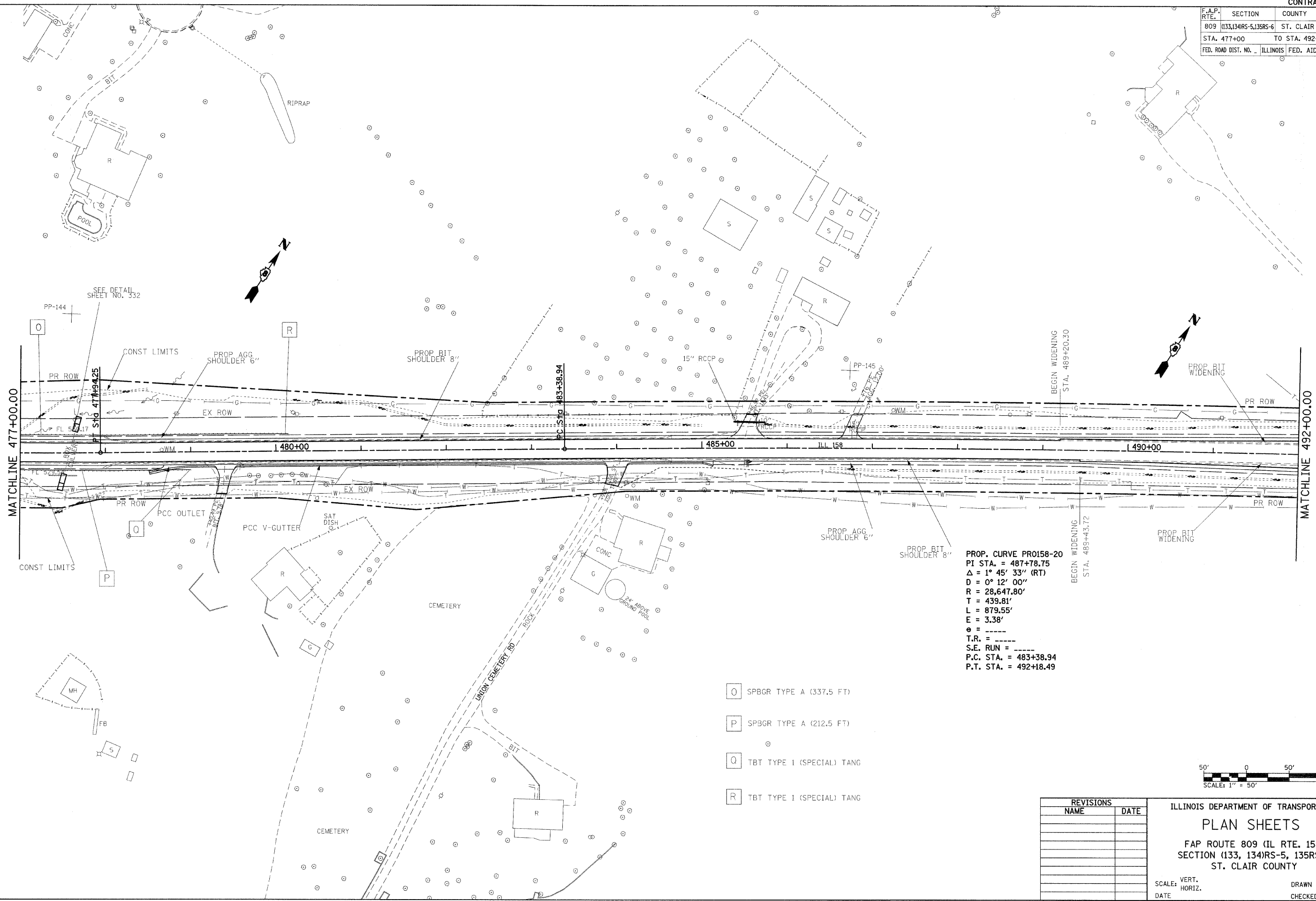
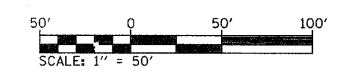


F.A.P. RTE.	SECTION	COUNTY	TOTAL SHEETS	SHEET NO.
809	133,134RS-5,135RS-6	ST. CLAIR	762	92
STA. 477+00		TO STA. 492+00		
FED. ROAD DIST. NO.		ILLINOIS	FED. AID PROJECT	



PROP. CURVE PRO158-20  
 PI STA. = 487+78.75  
 Δ = 1° 45' 33" (RT)  
 D = 0° 12' 00"  
 R = 28,647.80'  
 T = 439.81'  
 L = 879.55'  
 E = 3.38'  
 e = -----  
 T.R. = -----  
 S.E. RUN = -----  
 P.C. STA. = 483+38.94  
 P.T. STA. = 492+18.49

- O SPBGR TYPE A (337.5 FT)
- P SPBGR TYPE A (212.5 FT)
- Q TBT TYPE 1 (SPECIAL) TANG
- R TBT TYPE 1 (SPECIAL) TANG



REVISIONS	
NAME	DATE

ILLINOIS DEPARTMENT OF TRANSPORTATION  
**PLAN SHEETS**  
 FAP ROUTE 809 (IL RTE. 158)  
 SECTION (133, 134)RS-5, 135RS-6  
 ST. CLAIR COUNTY

SCALE: VERT. \_\_\_\_\_  
 HORIZ. \_\_\_\_\_  
 DATE \_\_\_\_\_

DRAWN BY \_\_\_\_\_  
 CHECKED BY \_\_\_\_\_

PLOT DATE = 4/27/2010  
 FILE NAME = c:\p\work\p\m\ddt\karlasal\0818727a\p\081902a.dgn  
 PLOT SCALE = 50.0000 / 1" = 50'  
 USER NAME = karlasal