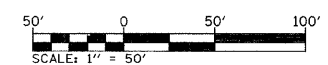
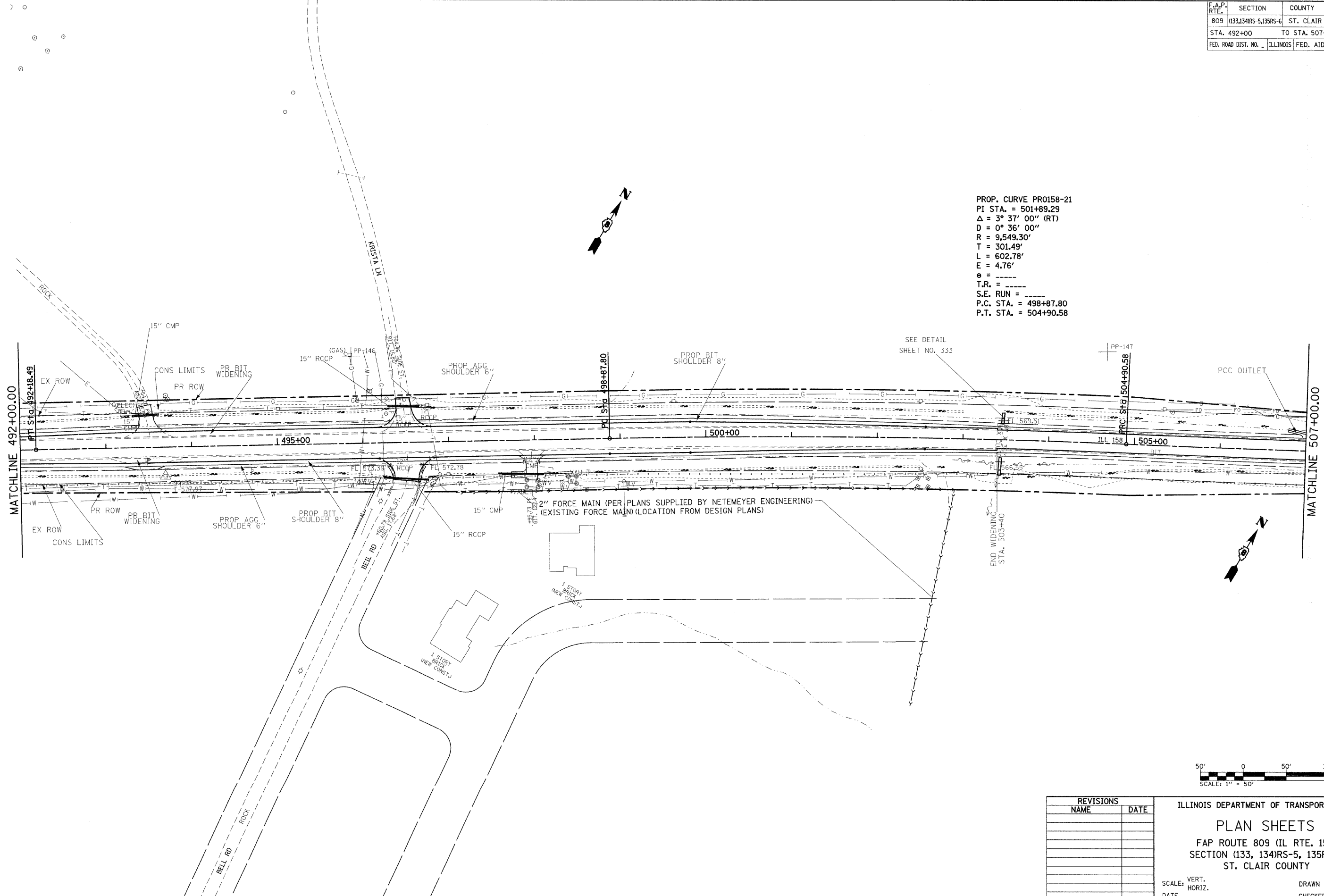


F.A.P. RTE.	SECTION	COUNTY	TOTAL SHEETS	SHEET NO.
809	(133,134)RS-5,135RS-6	ST. CLAIR	762	93
STA. 492+00		TO STA. 507+00		
FED. ROAD DIST. NO. ILLINOIS FED. AID PROJECT				

PROP. CURVE PRO158-21
 PI STA. = 501+89.29
 $\Delta = 3^\circ 37' 00''$ (RT)
 $D = 0^\circ 36' 00''$
 $R = 9,549.30'$
 $T = 301.49'$
 $L = 602.78'$
 $E = 4.76'$
 $e =$
 $T.R. =$
 $S.E. RUN =$
 $P.C. STA. = 498+87.80$
 $P.T. STA. = 504+90.58$



REVISIONS	
NAME	DATE

ILLINOIS DEPARTMENT OF TRANSPORTATION
PLAN SHEETS
 FAP ROUTE 809 (IL RTE. 158)
 SECTION (133, 134)RS-5, 135RS-6
 ST. CLAIR COUNTY

SCALE: VERT. _____
 HORIZ. _____
 DATE _____

DRAWN BY _____
 CHECKED BY _____

PLOT DATE = 4/27/2018
 FILE NAME = c:\pva-works\p\m\dot\karlasal\1818727\p\indl\962a.dgn
 PLOT SCALE = 50.0000' / 1" IN.
 USER NAME = karlasal