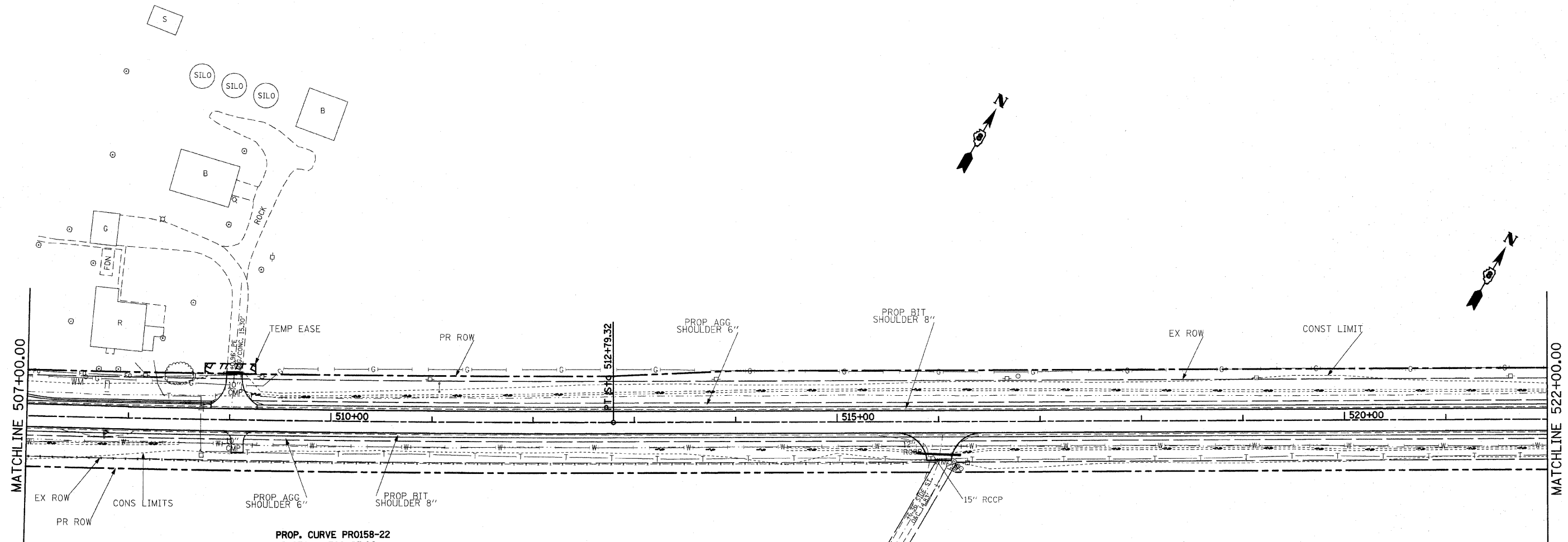
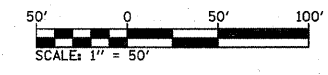


F.A.P. RTE.	SECTION	COUNTY	TOTAL SHEETS	SHEET NO.
809	(133,134)RS-5,135RS-6	ST. CLAIR	762	94
STA. 507+00		TO STA. 522+00		
FED. ROAD DIST. NO. _____		ILLINOIS FED. AID PROJECT		



PROP. CURVE PR0158-22
 PI STA. = 508+85.00
 $\Delta = 2^\circ 16' 35''$ (LT)
 $D = 0^\circ 17' 19''$
 $R = 19,851.21'$
 $T = 394.42'$
 $L = 788.73'$
 $E = 3.92'$
 $\theta = \text{-----}$
 $T.R. = \text{-----}$
 $S.E. RUN = \text{-----}$
 P.C. STA. = 504+90.58
 P.T. STA. = 512+79.32



REVISIONS	
NAME	DATE

ILLINOIS DEPARTMENT OF TRANSPORTATION
PLAN SHEETS
 FAP ROUTE 809 (IL RTE. 158)
 SECTION (133, 134)RS-5, 135RS-6
 ST. CLAIR COUNTY

SCALE: VERT. _____
 HORIZ. _____
 DATE _____
 DRAWN BY _____
 CHECKED BY _____

PLOT DATE = #DATE#
 FILE NAME = #FILE#
 PLOT SCALE = #SCALE#
 USER NAME = #USER#