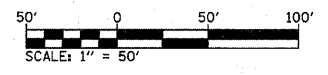
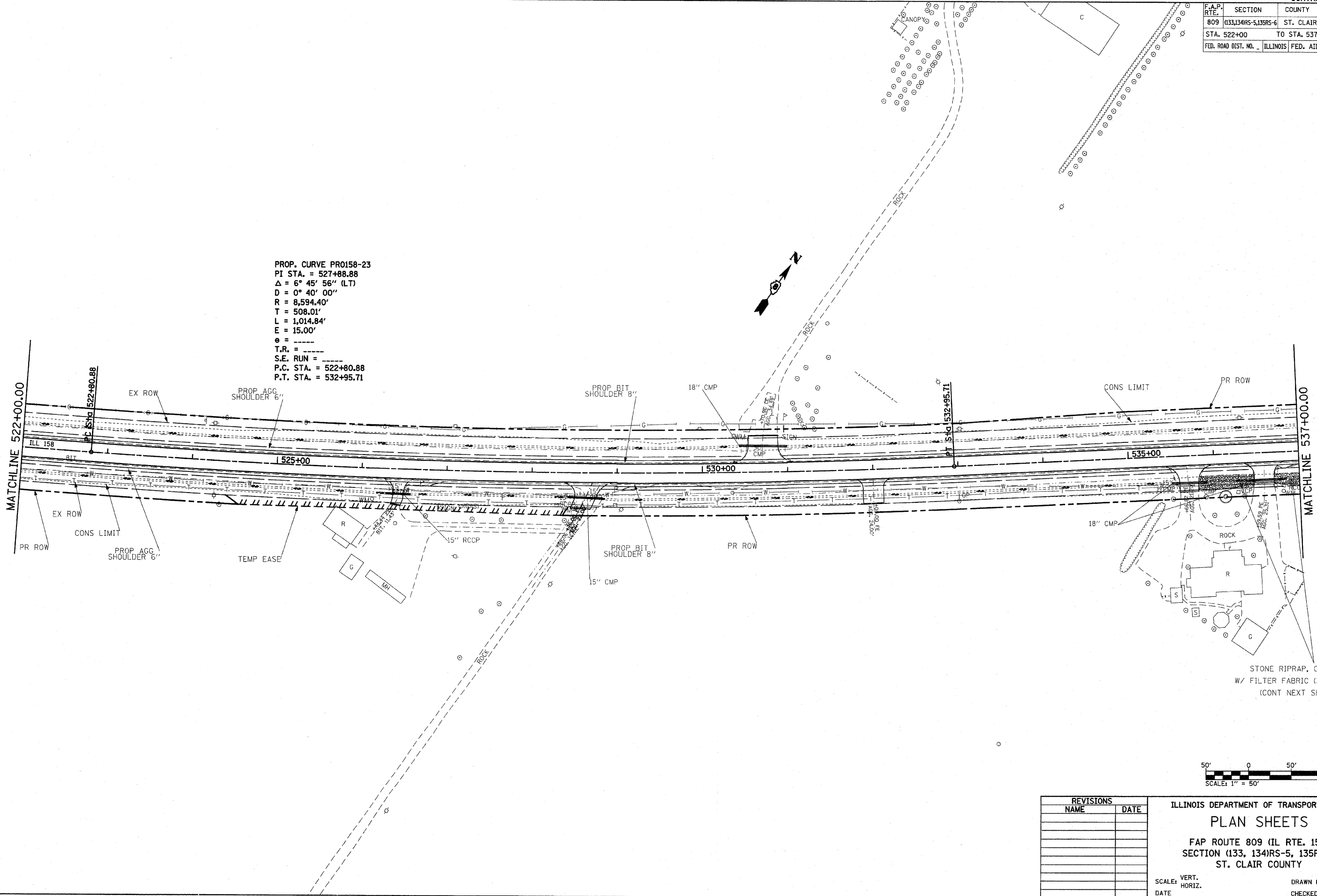


F.A.P. RTE.	SECTION	COUNTY	TOTAL SHEETS	SHEET NO.
809	133,134RS-5,135RS-6	ST. CLAIR	762	95
STA. 522+00		TO STA. 537+00		
FED. ROAD DIST. NO. _____		ILLINOIS	FED. AID PROJECT	

PROP. CURVE PRO158-23
 PI STA. = 527+88.88
 $\Delta = 6^\circ 45' 56''$ (LT)
 $D = 0^\circ 40' 00''$
 $R = 8,594.40'$
 $T = 508.01'$
 $L = 1,014.84'$
 $E = 15.00'$
 $e = \text{---}$
 $T.R. = \text{---}$
 $S.E. \text{ RUN} = \text{---}$
 $P.C. \text{ STA.} = 522+80.88$
 $P.T. \text{ STA.} = 532+95.71$



REVISIONS	
NAME	DATE

ILLINOIS DEPARTMENT OF TRANSPORTATION
PLAN SHEETS
 FAP ROUTE 809 (IL RTE. 158)
 SECTION (133, 134)RS-5, 135RS-6
 ST. CLAIR COUNTY

SCALE: VERT. _____
 HORIZ. _____
 DATE _____
 DRAWN BY _____
 CHECKED BY _____

PLOT DATE = #DATE#
 FILE NAME = #FILE#
 PLOT SCALE = #SCALE#
 USER NAME = #USER#