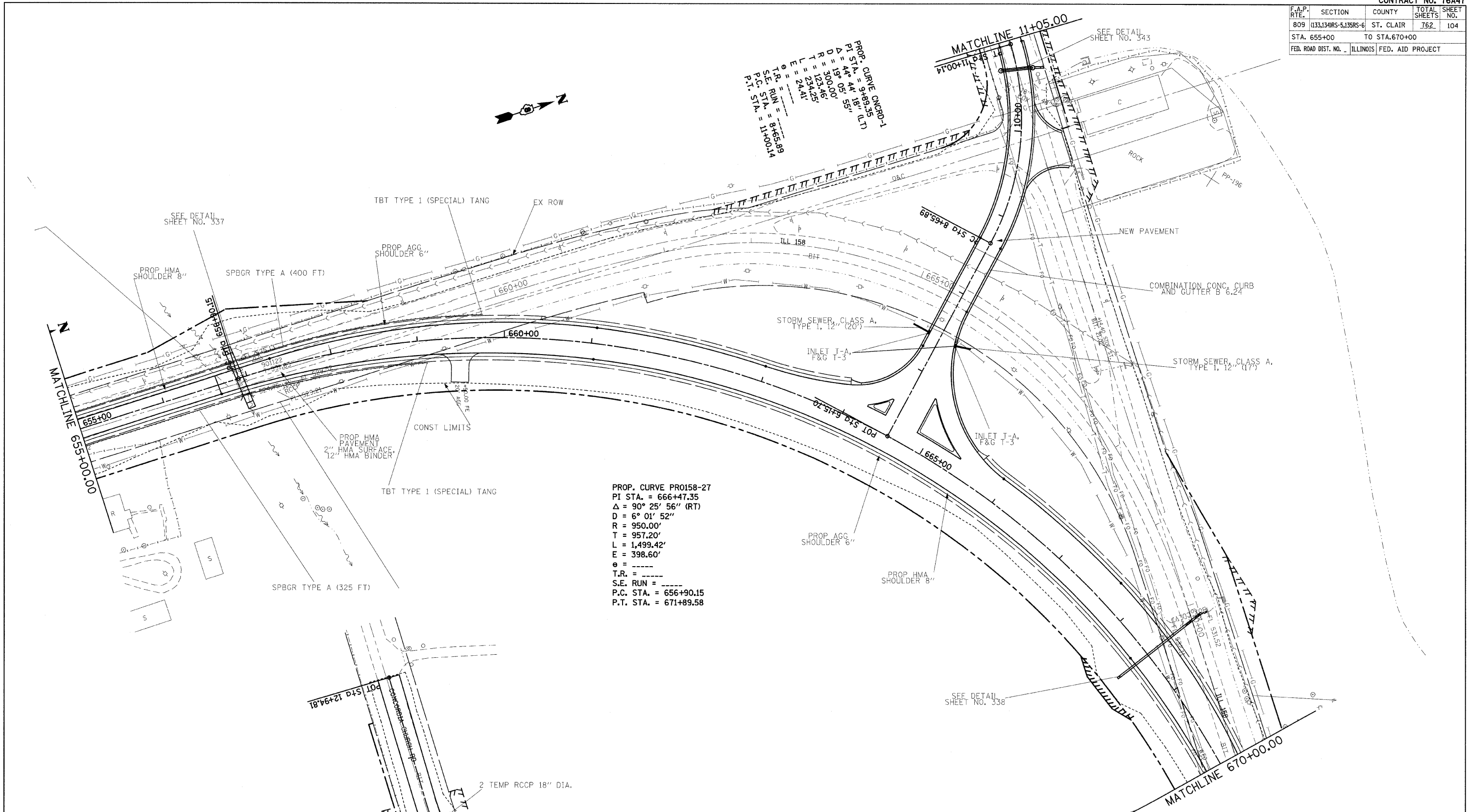


F.A.P. RTE.	SECTION	COUNTY	TOTAL SHEETS	SHEET NO.
809	(133,134)RS-5,135RS-6	ST. CLAIR	762	104
STA. 655+00		TO STA. 670+00		
FED. ROAD DIST. NO. 1		ILLINOIS FED. AID PROJECT		

PROP. CURVE ONCD01-1
 PI STA. = 9485.35
 $\Delta = 19^{\circ} 05' 55''$
 $D = 190.00'$
 $R = 123.46'$
 $T = 234.25'$
 $L = 24.41'$
 $e =$
 $T.R. =$
 $S.E. RUN = 8465.89$
 $P.C. STA. = 11+00.14$

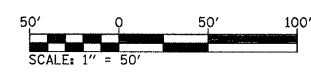
PROP. CURVE PR0158-27
 PI STA. = 666+47.35
 $\Delta = 90^{\circ} 25' 56''$ (RT)
 $D = 6^{\circ} 01' 52''$
 $R = 950.00'$
 $T = 957.20'$
 $L = 1,499.42'$
 $E = 398.60'$
 $e =$
 $T.R. =$
 $S.E. RUN =$
 $P.C. STA. = 656+90.15$
 $P.T. STA. = 671+89.58$



REVISIONS	
NAME	DATE

ILLINOIS DEPARTMENT OF TRANSPORTATION
PLAN SHEETS
 FAP ROUTE 809 (IL RTE. 158)
 SECTION (133, 134)RS-5, 135RS-6
 ST. CLAIR COUNTY

SCALE: VERT. _____
 HORIZ. _____
 DATE _____ DRAWN BY _____
 CHECKED BY _____



PLOT DATE = 10/25/2009
 PLOT SCALE = 1/8" = 100'
 USER NAME = kcr-1001