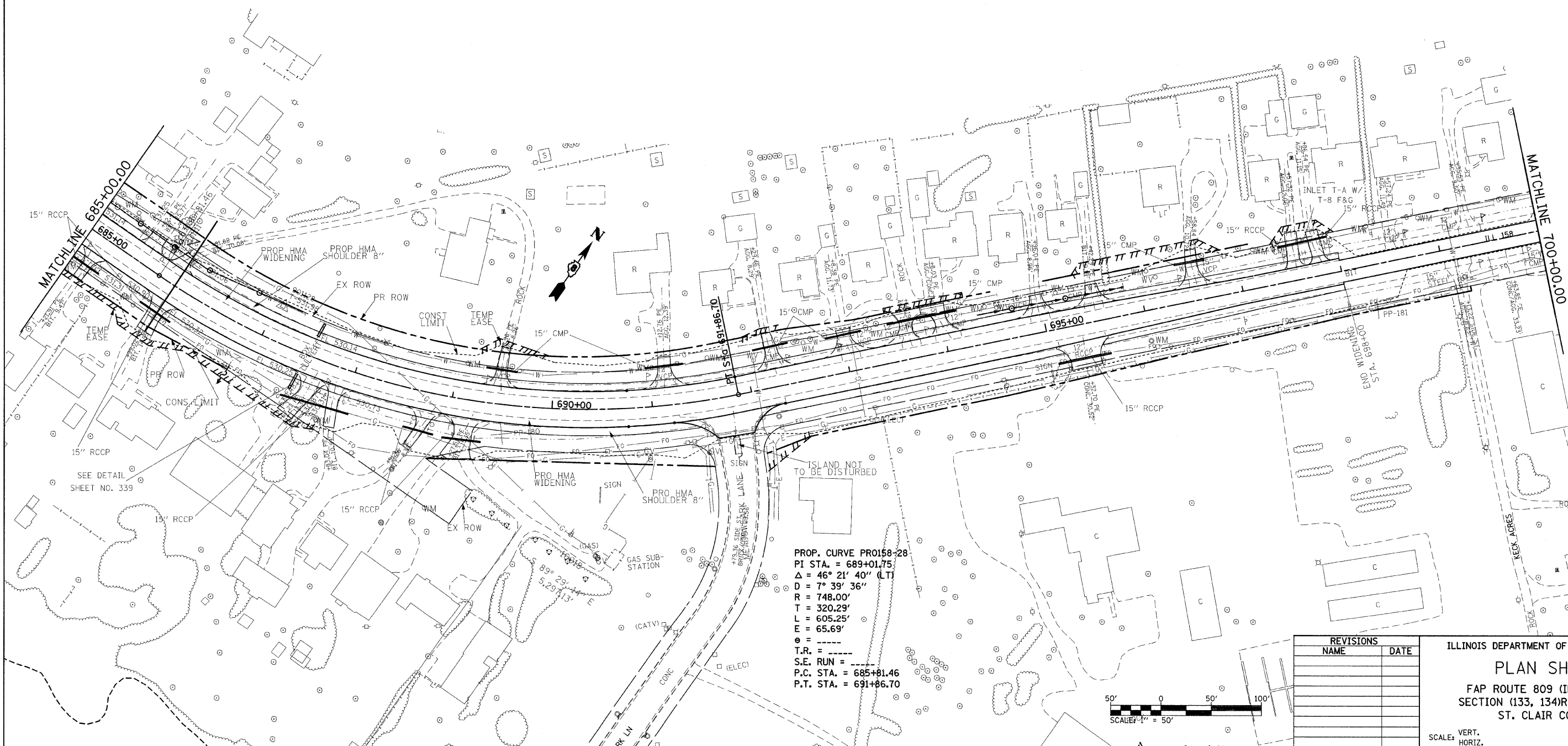
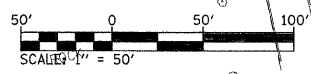


F.A.P. RTE.	SECTION	COUNTY	TOTAL SHEETS	SHEET NO.
809	(133,134)RS-5,135RS-6	ST. CLAIR	762	106
STA. 685+00		TO STA. 700+00		
FED. ROAD DIST. NO. ILLINOIS FED. AID PROJECT				



**PROP. CURVE PRO158-28**  
 PI STA. = 689+01.75  
 $\Delta = 46^\circ 21' 40''$  (LT)  
 $D = 7^\circ 39' 36''$   
 $R = 748.00'$   
 $T = 320.29'$   
 $L = 605.25'$   
 $E = 65.69'$   
 $e = \text{---}$   
 $T.R. = \text{---}$   
 $S.E. \text{ RUN} = \text{---}$   
 $P.C. \text{ STA.} = 685+81.46$   
 $P.T. \text{ STA.} = 691+86.70$



Rev. Sheet 12-21-07

REVISIONS	
NAME	DATE

ILLINOIS DEPARTMENT OF TRANSPORTATION  
**PLAN SHEETS**  
 FAP ROUTE 809 (IL RTE. 158)  
 SECTION (133, 134)RS-5, 135RS-6  
 ST. CLAIR COUNTY  
 SCALE: VERT. \_\_\_\_\_  
 HORIZ. \_\_\_\_\_  
 DATE \_\_\_\_\_  
 DRAWN BY \_\_\_\_\_  
 CHECKED BY \_\_\_\_\_

PLOT DATE = 12/17/2009  
 FILE NAME = I:\PROJECTS\1101101\DOT\KARLASAL\plan1225\plan1225.dgn  
 PLOT SCALE = 50.000000 / IN.  
 USER NAME = karlasal