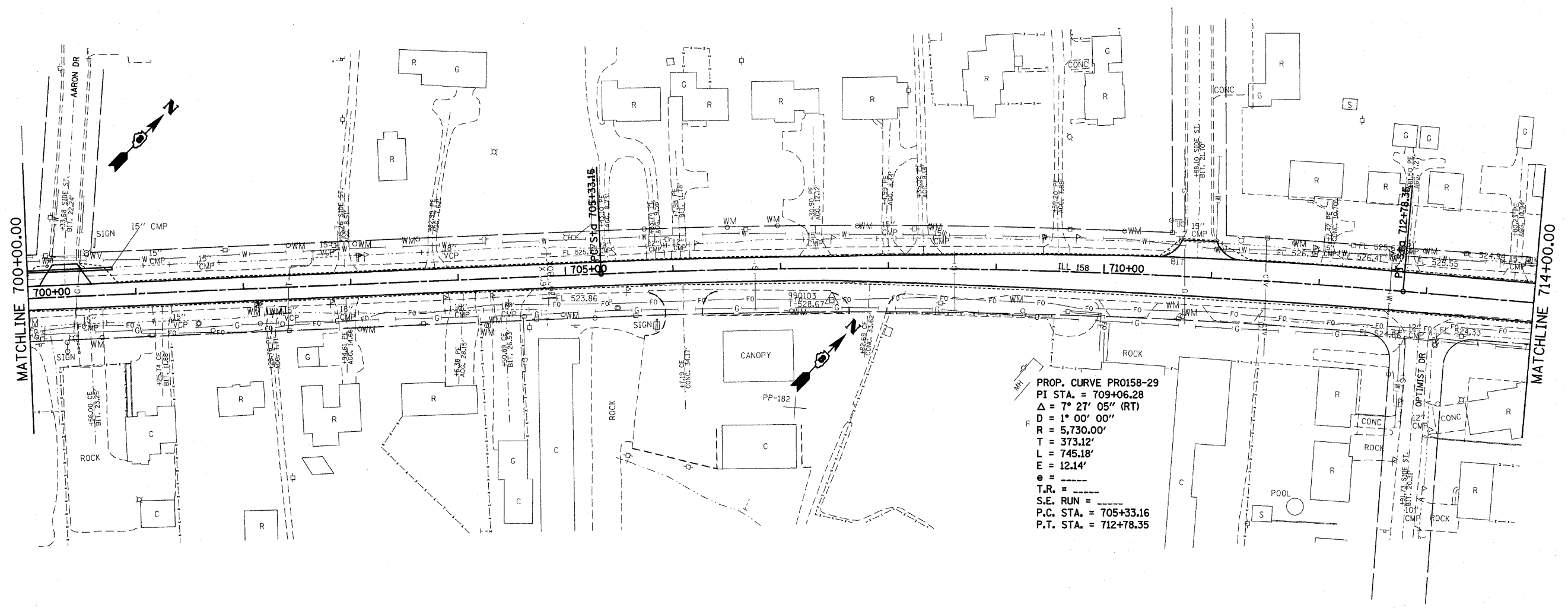
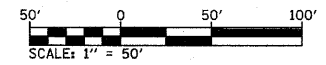


F.A.P. RTE.	SECTION	COUNTY	TOTAL SHEETS	SHEET NO.
809	(133,134RS-5,135RS-6	ST. CLAIR	762	107
STA. 700+00		TO STA. 714+00		
FED. ROAD DIST. NO. _		ILLINOIS	FED. AID PROJECT	



PROP. CURVE PR0158-29  
 PI STA. = 709+06.28  
 $\Delta = 7^\circ 27' 05''$  (RT)  
 $D = 1^\circ 00' 00''$   
 $R = 5,730.00'$   
 $T = 373.12'$   
 $L = 745.18'$   
 $E = 12.14'$   
 $e =$   
 $T.R. =$   
 $S.E. RUN =$   
 $P.C. STA. = 705+33.16$   
 $P.T. STA. = 712+78.35$



PLOT DATE = #DATE#  
 FILE NAME = #FILE#  
 PLOT SCALE = #SCALE#  
 USER NAME = #USER#

REVISIONS	
NAME	DATE

ILLINOIS DEPARTMENT OF TRANSPORTATION  
**PLAN SHEETS**  
 FAP ROUTE 809 (IL RTE. 158)  
 SECTION (133, 134)RS-5, 135RS-6  
 ST. CLAIR COUNTY

SCALE: VERT. \_\_\_\_\_  
 DATE: \_\_\_\_\_  
 HORIZ. \_\_\_\_\_  
 DRAWN BY \_\_\_\_\_  
 CHECKED BY \_\_\_\_\_