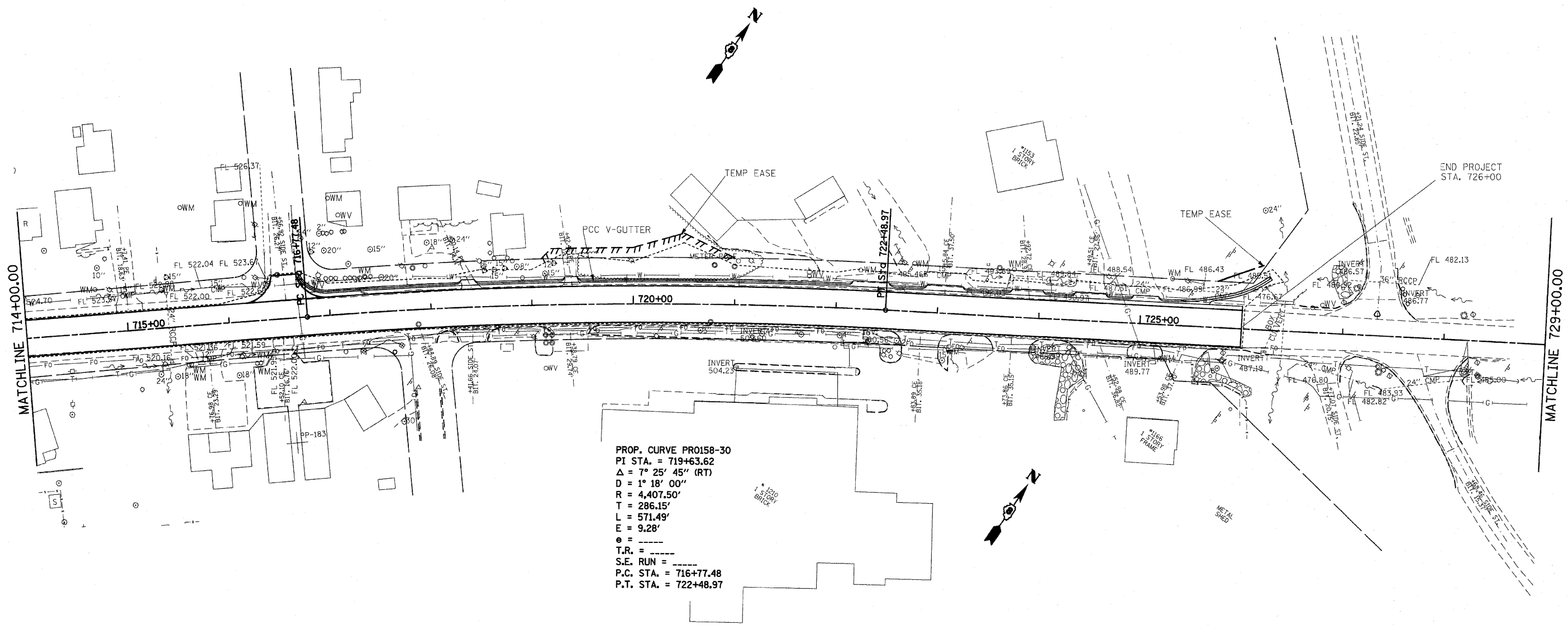
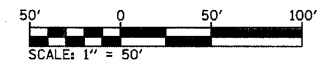


F.A.P. RTE.	SECTION	COUNTY	TOTAL SHEETS	SHEET NO.
809	(133,134)RS-5,135RS-6	ST. CLAIR	162	108
STA. 714+00		TO STA. 726+00		
FED. ROAD DIST. NO. _____		ILLINOIS	FED. AID PROJECT	



PROP. CURVE PR0158-30
 P.I. STA. = 719+63.62
 $\Delta = 7^\circ 25' 45''$ (RT)
 D = 1° 18' 00"
 R = 4,407.50'
 T = 286.15'
 L = 571.49'
 E = 9.28'
 e = _____
 T.R. = _____
 S.E. RUN = _____
 P.C. STA. = 716+77.48
 P.T. STA. = 722+48.97



REVISIONS	
NAME	DATE

ILLINOIS DEPARTMENT OF TRANSPORTATION
PLAN SHEETS
 FAP ROUTE 809 (IL RTE. 158)
 SECTION (133, 134)RS-5, 135RS-6
 ST. CLAIR COUNTY

SCALE: VERT. _____
 HORIZ. _____
 DATE _____ DRAWN BY _____
 CHECKED BY _____

PLOT DATE = #DATE#
 FILE NAME = #FILE#
 PLOT SCALE = #SCALE#
 USER NAME = #USER#