

PARCEL NO.	OWNER	TOTAL HOLDING ACRES	FEE SIMPLE ACQUISITION			REMAINDER ACRES	EASEMENTS		PERMANENT TAX NUMBER	PROPERTY ACQUIRED BY	
			GROSS		NET		PE - PERMANENT TE - TEMPORARY	EASEMENT PURPOSE			
			ACRES	SQ. FT.							ACRES
8308243	Cherilyn Castleman, single, as sole owner Document No. A02065300 Title Report Number SC-5031	0.1732	0.0208	906					08-29-0-305-018		
8308244	Jimmie L. Richardson and Carolee J. Richardson, husband and wife, as joint tenants Document No. A02054051 Title Report Number SC-5030	0.1670	0.0201	873					08-29-0-305-019		
8308245	Lola E. Hook Doc. No. A02024541 Title Report Number SC-5029	0.2425	0.0291	1,266					08-29-0-305-020		
8308249	East St. Louis and Interurban Water Company Book 2407 Page 2204 Title Report Number SC-5295	0.1533	0.0138	600					08-29-0-309-022		
8308250	Debra Kay Dill, a single person Doc. No. A01882615 Title Report Number SC-6042	0.3334	0.0884	3,853	0.0643	2,802	0.0241	1,051	0.2450	TE=0.0080 TE=350 GRADING	08-29-0-309-023
8308251	H. Thomas Luetkemeyer, as Trustee of the H. Thomas Luetkemeyer 2000 Declaration of Trust dated the 15th day of December, 2000 Book 3488 Page 125 Title Report Number SC-6049	0.2633	0.0241	1,051					0.2452		08-29-0-309-024
8308252	Roger O. Schmidt & Gail M. Schmidt, his wife, as joint tenants Book 2494 Page 864 Title Report Number SC-6050	0.3338	0.0884	3,853	0.0643	2,802	0.0241	1,051	0.2454		08-29-0-309-025
8308254	Jimmy D. Barney & Diana Barney, husband and wife, as tenants by the entirety Book 3464 Page 343 Title Report Number SC-6097	0.2004	0.0179	781					0.1825	TE=0.0060 TE=260 GRADING	08-29-0-309-026

BEARINGS SHOWN HEREON ARE BASED ON SURVEY CONTROL DATA AS PROVIDED BY THE ILLINOIS DEPARTMENT OF TRANSPORTATION.

CONTRACT NO.: 76408 & 76447  
R-98-008-03

LEGEND

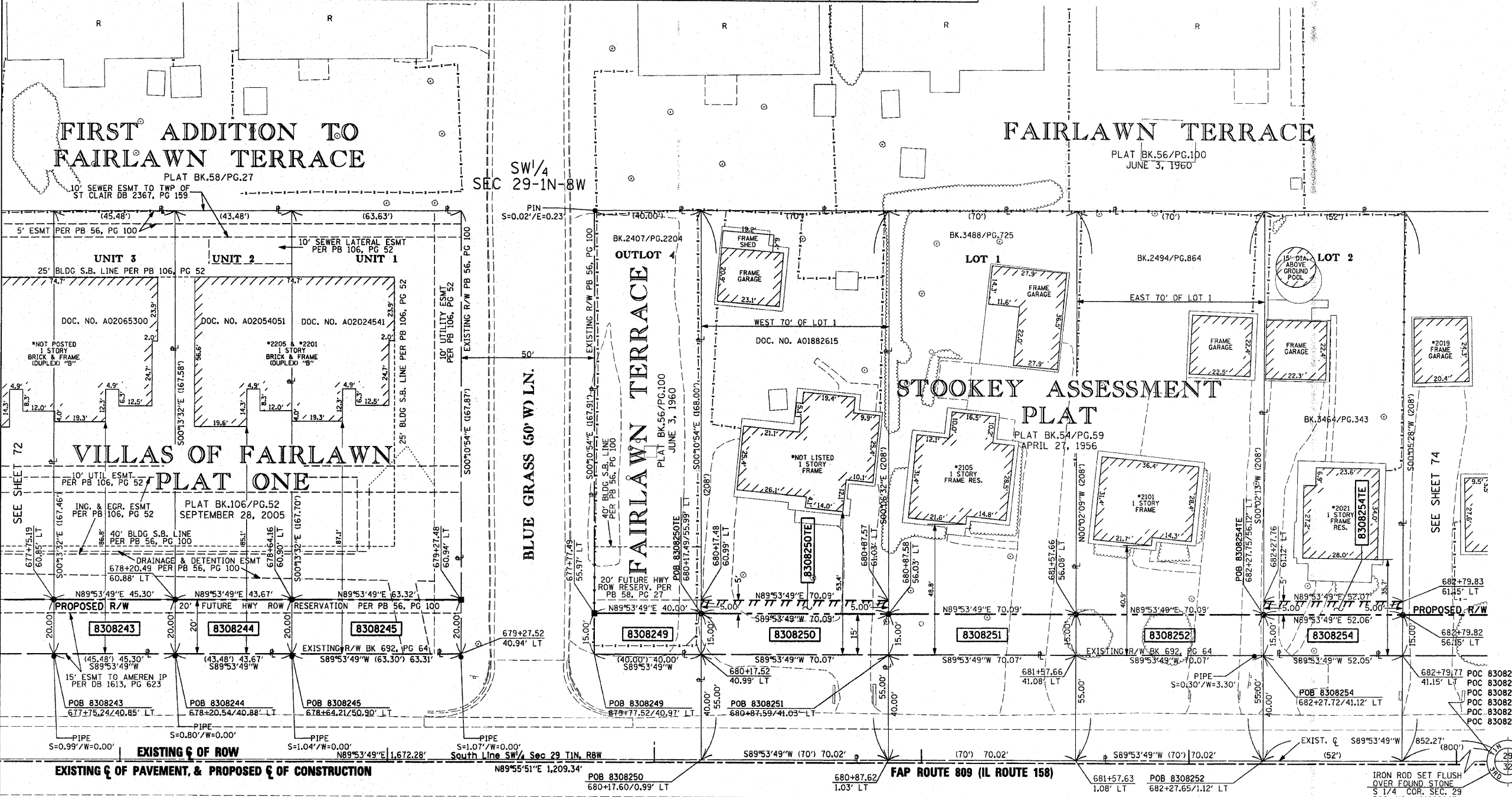
- EXISTING CENTERLINE
- EXISTING RIGHT OF WAY LINE
- EXISTING EASEMENT LINE
- PROPOSED CENTERLINE
- PROPOSED RIGHT OF WAY LINE
- PROPOSED TEMPORARY EASEMENT LINE
- PROPOSED PERMANENT EASEMENT LINE
- SECTION LINE
- QUARTER SECTION LINE
- PROPERTY (DEED) LINE
- APPARENT PROPERTY LINE
- MEASURED DIMENSION
- COMPUTED DIMENSION
- RECORDED DIMENSION
- FOUND IRON PIPE OR IRON ROD
- SET 1/2 INCH IRON ROD
- PERMANENT SURVEY MONUMENT, I.D.O.T. STD. 2135 (TO BE SET BY OTHERS)
- CUT CROSS FOUND OR SET
- FOUND RIGHT OF WAY MARKER
- PROPOSED E OF CONSTRUCTION BEARING AND DISTANCE
- SAME OWNERSHIP
- EXISTING BUILDING

COORDINATES SHOWN HEREON ARE BASED ON SURVEY CONTROL DATA AS PROVIDED BY THE ILLINOIS DEPARTMENT OF TRANSPORTATION.

COORDINATE TABLE

677+75.19	60.85' LT	667006.7367	2339936.9116
678+20.49	60.88' LT	667006.8181	2339982.2117
678+64.16	60.90' LT	667006.8965	2340025.8814
679+27.48	60.94' LT	667007.0103	2340089.2051
679+77.49	55.97' LT	667002.1002	2340139.2209
680+17.49	55.99' LT	667002.1720	2340179.2209
680+87.58	56.03' LT	667002.2980	2340249.3074
681+57.66	56.08' LT	667002.4239	2340319.3938
682+27.75	56.12' LT	667002.5498	2340389.4802
682+79.82	56.15' LT	667002.6434	2340441.5444

CHANGE	DESCRIPTION	
1	MM/00/YYYY	CHANGE XXXXX
2	MM/00/YYYY	CHANGE XXXXX
3	MM/00/YYYY	CHANGE XXXXX
4	MM/00/YYYY	CHANGE XXXXX
5	MM/00/YYYY	CHANGE XXXXX
6	MM/00/YYYY	CHANGE XXXXX
7	MM/00/YYYY	CHANGE XXXXX
8	MM/00/YYYY	CHANGE XXXXX
9	MM/00/YYYY	CHANGE XXXXX
10	MM/00/YYYY	CHANGE XXXXX
11	MM/00/YYYY	CHANGE XXXXX
12	MM/00/YYYY	CHANGE XXXXX
13	MM/00/YYYY	CHANGE XXXXX
14	MM/00/YYYY	CHANGE XXXXX
15	MM/00/YYYY	CHANGE XXXXX
16	MM/00/YYYY	CHANGE XXXXX
17	MM/00/YYYY	CHANGE XXXXX
18	MM/00/YYYY	CHANGE XXXXX
19	MM/00/YYYY	CHANGE XXXXX
20	MM/00/YYYY	CHANGE XXXXX
21	MM/00/YYYY	CHANGE XXXXX
22	MM/00/YYYY	CHANGE XXXXX
23	MM/00/YYYY	CHANGE XXXXX
24	MM/00/YYYY	CHANGE XXXXX
25	MM/00/YYYY	CHANGE XXXXX
26	MM/00/YYYY	CHANGE XXXXX
27	MM/00/YYYY	CHANGE XXXXX
28	MM/00/YYYY	CHANGE XXXXX
29	MM/00/YYYY	CHANGE XXXXX
30	MM/00/YYYY	CHANGE XXXXX
31	MM/00/YYYY	CHANGE XXXXX
32	MM/00/YYYY	CHANGE XXXXX
33	MM/00/YYYY	CHANGE XXXXX
34	MM/00/YYYY	CHANGE XXXXX
35	MM/00/YYYY	CHANGE XXXXX
36	MM/00/YYYY	CHANGE XXXXX
37	MM/00/YYYY	CHANGE XXXXX
38	MM/00/YYYY	CHANGE XXXXX
39	MM/00/YYYY	CHANGE XXXXX
40	MM/00/YYYY	CHANGE XXXXX
41	MM/00/YYYY	CHANGE XXXXX
42	MM/00/YYYY	CHANGE XXXXX
43	MM/00/YYYY	CHANGE XXXXX
44	MM/00/YYYY	CHANGE XXXXX
45	MM/00/YYYY	CHANGE XXXXX
46	MM/00/YYYY	CHANGE XXXXX
47	MM/00/YYYY	CHANGE XXXXX
48	MM/00/YYYY	CHANGE XXXXX
49	MM/00/YYYY	CHANGE XXXXX
50	MM/00/YYYY	CHANGE XXXXX
51	MM/00/YYYY	CHANGE XXXXX
52	MM/00/YYYY	CHANGE XXXXX
53	MM/00/YYYY	CHANGE XXXXX
54	MM/00/YYYY	CHANGE XXXXX
55	MM/00/YYYY	CHANGE XXXXX
56	MM/00/YYYY	CHANGE XXXXX
57	MM/00/YYYY	CHANGE XXXXX
58	MM/00/YYYY	CHANGE XXXXX
59	MM/00/YYYY	CHANGE XXXXX
60	MM/00/YYYY	CHANGE XXXXX
61	MM/00/YYYY	CHANGE XXXXX
62	MM/00/YYYY	CHANGE XXXXX
63	MM/00/YYYY	CHANGE XXXXX
64	MM/00/YYYY	CHANGE XXXXX
65	MM/00/YYYY	CHANGE XXXXX
66	MM/00/YYYY	CHANGE XXXXX
67	MM/00/YYYY	CHANGE XXXXX
68	MM/00/YYYY	CHANGE XXXXX
69	MM/00/YYYY	CHANGE XXXXX
70	MM/00/YYYY	CHANGE XXXXX
71	MM/00/YYYY	CHANGE XXXXX
72	MM/00/YYYY	CHANGE XXXXX
73	MM/00/YYYY	CHANGE XXXXX
74	MM/00/YYYY	CHANGE XXXXX
75	MM/00/YYYY	CHANGE XXXXX
76	MM/00/YYYY	CHANGE XXXXX
77	MM/00/YYYY	CHANGE XXXXX
78	MM/00/YYYY	CHANGE XXXXX
79	MM/00/YYYY	CHANGE XXXXX
80	MM/00/YYYY	CHANGE XXXXX
81	MM/00/YYYY	CHANGE XXXXX
82	MM/00/YYYY	CHANGE XXXXX
83	MM/00/YYYY	CHANGE XXXXX
84	MM/00/YYYY	CHANGE XXXXX
85	MM/00/YYYY	CHANGE XXXXX
86	MM/00/YYYY	CHANGE XXXXX
87	MM/00/YYYY	CHANGE XXXXX
88	MM/00/YYYY	CHANGE XXXXX
89	MM/00/YYYY	CHANGE XXXXX
90	MM/00/YYYY	CHANGE XXXXX
91	MM/00/YYYY	CHANGE XXXXX
92	MM/00/YYYY	CHANGE XXXXX
93	MM/00/YYYY	CHANGE XXXXX
94	MM/00/YYYY	CHANGE XXXXX
95	MM/00/YYYY	CHANGE XXXXX
96	MM/00/YYYY	CHANGE XXXXX
97	MM/00/YYYY	CHANGE XXXXX
98	MM/00/YYYY	CHANGE XXXXX
99	MM/00/YYYY	CHANGE XXXXX
100	MM/00/YYYY	CHANGE XXXXX



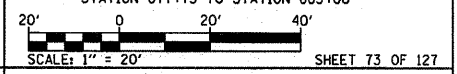
STATE OF MISSOURI )  
CITY OF ST. LOUIS )

I, RONNIE D. LOWE AN ILLINOIS PROFESSIONAL LAND SURVEYOR, CERTIFY THAT THIS PROFESSIONAL SERVICE CONFORMS TO THE CURRENT ILLINOIS MINIMUM STANDARDS FOR A BOUNDARY SURVEY FOR THE PROPOSED PARCEL(S) TO BE ACQUIRED BY THE STATE OF ILLINOIS, DEPARTMENT OF TRANSPORTATION, SHOWN HEREON.

DATED \_\_\_\_\_  
RONNIE D. LOWE, PLS NO. 035-003363  
LICENSE EXPIRATION DATE: 11/30/2010

**DAVID MASON & ASSOCIATES**  
Engineering Architecture Surveying  
800 South Vandeventer Avenue  
St. Louis, MO 63110  
(314) 634-1030  
ILLINOIS LICENCE NO: 184-000485  
Expiration Date: April 30, 2011

ILLINOIS DEPARTMENT OF TRANSPORTATION  
**PLAT OF HIGHWAYS**  
FAP ROUTE 809 (IL 158)  
SECTION (133,134) RS-5, 135 RS-6  
MONROE AND ST. CLAIR COUNTY  
JOB NO. R-98-008-03  
STATION 677+75 TO STATION 683+00



COMPLETION DATE OF FIELD WORK PERFORMED  
LAND SURVEY: OCTOBER 06, 2006  
RIGHT OF WAY STAKING: JUNE 02, 2009

SEE SHEET 70