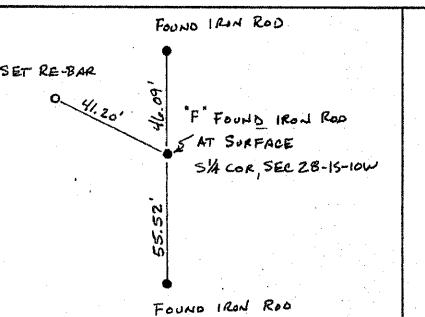
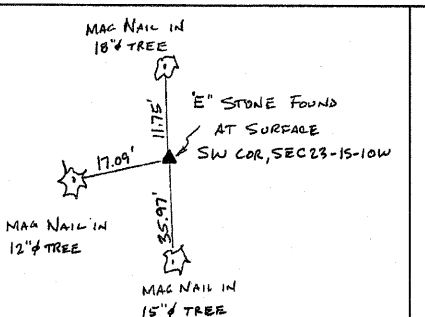
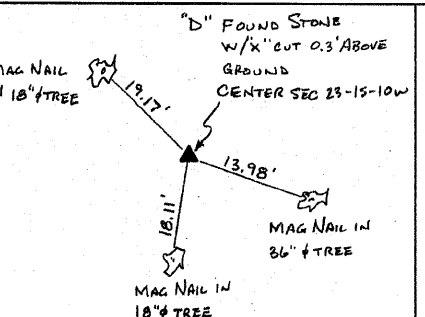
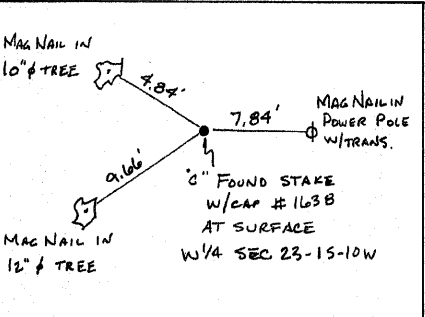
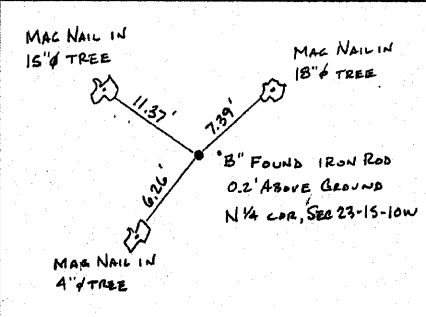
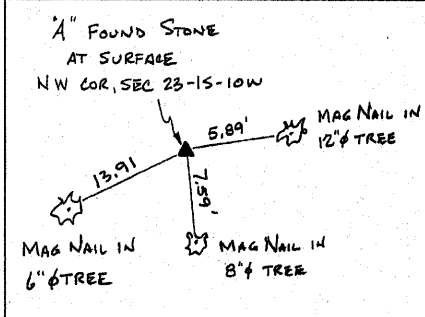


FAP NO.	SECTION	COUNTY	TOTAL SHEETS	SHEET NO.
B09	133,134 RS-4, 135 RS-5	MONROE/ST. CLAIR	762	232
STA. TO STA.		CONTRACT NO.: 76408 & 76A47		
		R-98-008-03		



NW COR SEC 23, T.1 S., R.10 W.  
11/16/04 MONUMENT RECORD DOC. NO. 292497  
N=646267.9735, E=2292357.4525

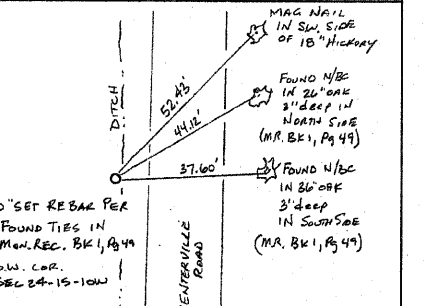
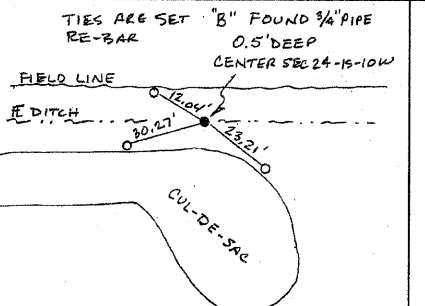
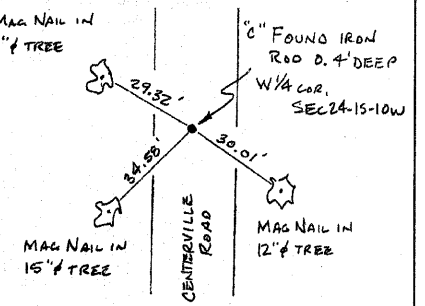
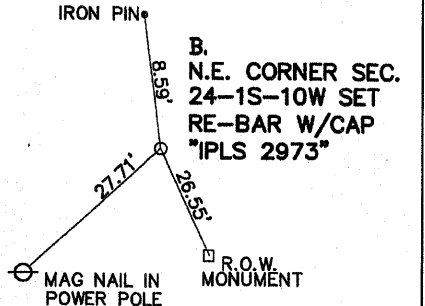
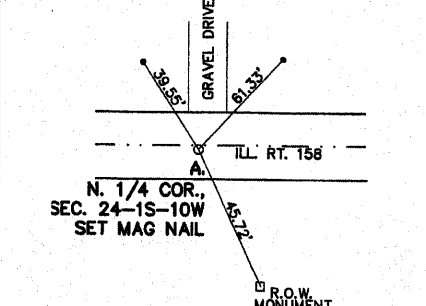
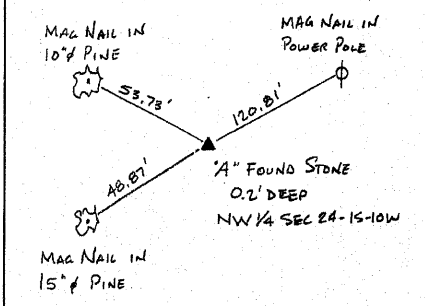
N 1/4 COR SEC 23, T.1 S., R.10 W.  
11/16/04 MONUMENT RECORD DOC. NO. 292497  
N=646265.3961, E=2293677.7136

W 1/4 COR SEC 23, T.1 S., R.10 W.  
11/16/04 MONUMENT RECORD DOC. NO. 292497  
N=643632.9707, E=2292320.2987

CENTER SEC 23, T.1 S., R.10 W.  
11/16/04 MONUMENT RECORD DOC. NO. 292497  
N=643598.9283, E=2294978.7884

SW COR SEC 23, T.1 S., R.10 W.  
11/16/04 MONUMENT RECORD DOC. NO. 292497  
N=641004.4711, E=2292295.5161

S 1/4 SEC 23, T.1 S., R.10 W.  
11/16/04 MONUMENT RECORD DOC. NO. 292497  
N=640904.4290, E=2297579.5520



NW COR SEC 24, T.1 S., R.10 W.  
1/24/05 MONUMENT RECORD DOC. NO. A01889069  
N=646221.3943, E=2297631.4408

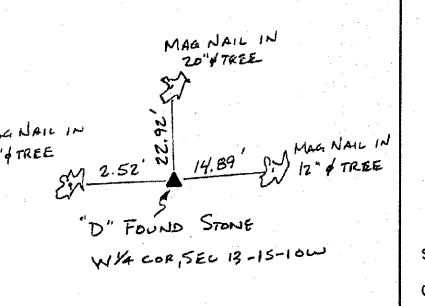
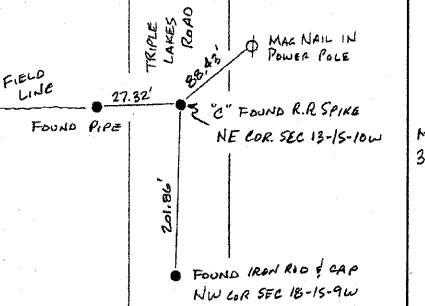
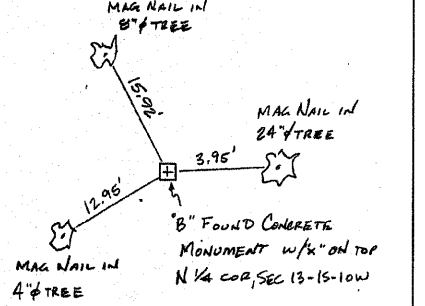
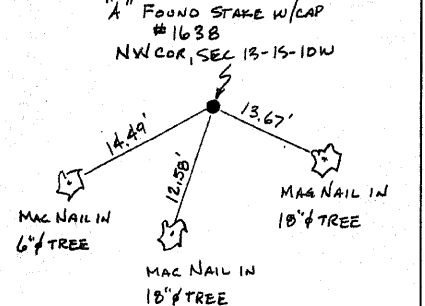
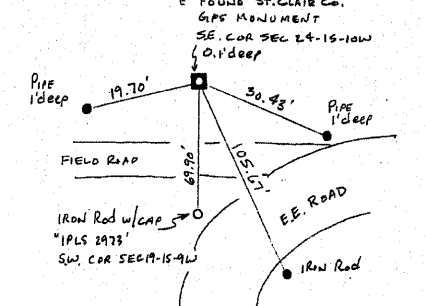
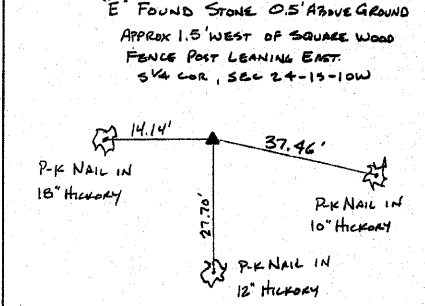
N 1/4 COR SEC 24, T.1 S., R.10 W.  
9/1/06 MONUMENT RECORD DOC. NO. A01999156  
N=646192.0348, E=2300239.1149

NE COR SEC 24, T.1 S., R.10 W.  
9/1/06 MONUMENT RECORD DOC. NO. A01999156  
N=646162.8550, E=2302830.8210

W 1/4 COR SEC 24, T.1 S., R.10 W.  
1/24/05 MONUMENT RECORD DB. 1 PG. 114-115  
N=643551.1353, E=2297623.4842

CENTER SEC 24, T.1 S., R.10 W.  
1/24/05 MONUMENT RECORD DOC. NO. A01889069  
N=643497.7671, E=2300248.7827

SW COR SEC 24, T.1 S., R.10 W.  
1/24/05 MONUMENT RECORD DB. 1 PG. 114-115  
N=640904.4290, E=2297579.5520



S 1/4 COR SEC 24, T.1 S., R.10 W.  
1/24/05 MONUMENT RECORD DB. 1 PG. 114-115  
N=640873.1330, E=2300210.0250

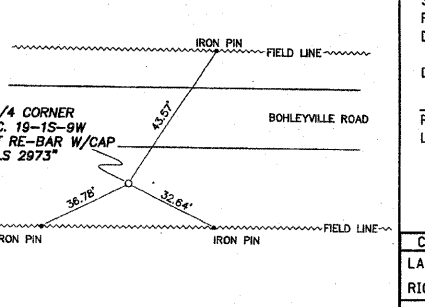
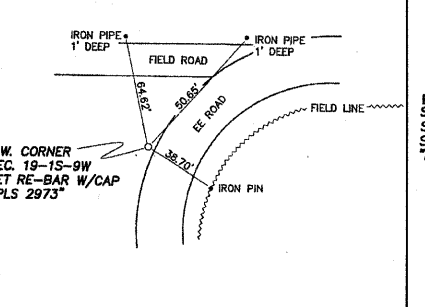
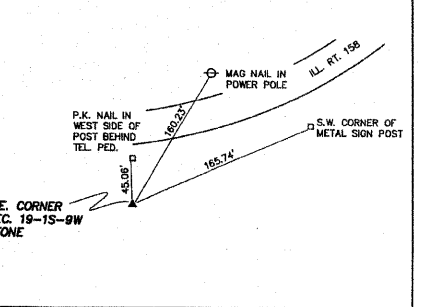
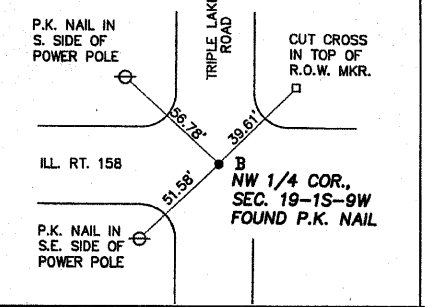
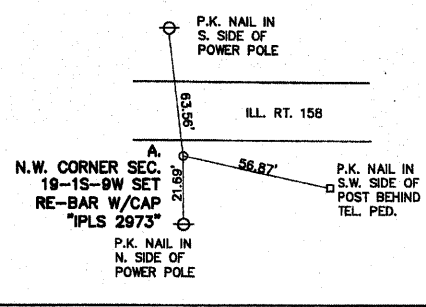
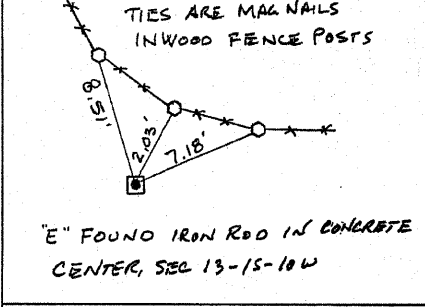
SE COR SEC 24, T.1 S., R.10 W.  
1/24/05 MONUMENT RECORD DOC. NO. A01889069  
N=640904.4290, E=2297579.5520

NW COR SEC 13, T.1 S., R.10 W.  
11/1/04 MONUMENT RECORD DOC. NO. A01875049  
N=651518.3481, E=2297705.2675

N 1/4 COR SEC 13, T.1 S., R.10 W.  
11/1/04 MONUMENT RECORD DOC. NO. A01875049  
N=651501.6933, E=2300270.0246

NE COR SEC 13, T.1 S., R.10 W.  
11/1/04 MONUMENT RECORD DOC. NO. A01875049  
N=651469.0501, E=2302841.3686

W 1/4 COR SEC 13, T.1 S., R.10 W.  
11/1/04 MONUMENT RECORD DOC. NO. A01875049  
N=648869.9344, E=2297662.5191



CENTER SEC 13, T.1 S., R.10 W.  
11/1/04 MONUMENT RECORD DOC. NO. A01875049  
N=648840.5947, E=2300250.0130

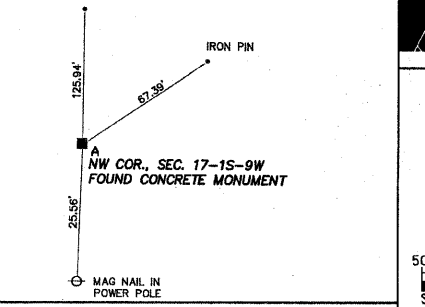
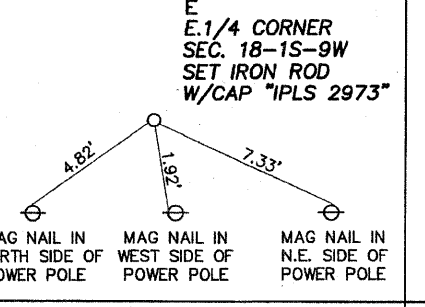
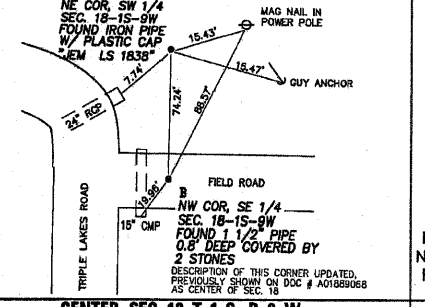
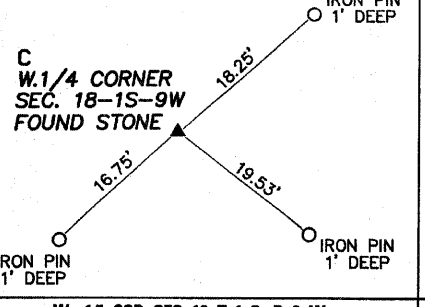
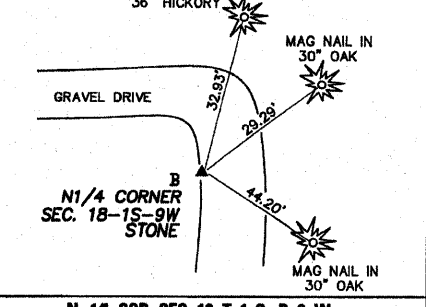
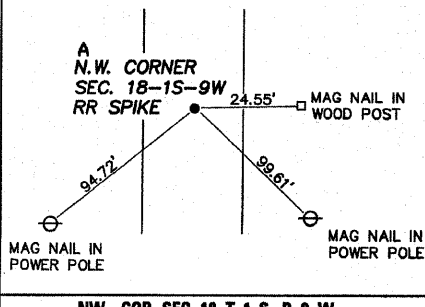
NW COR SEC 19, T.1 S., R.9 W.  
9/1/06 MONUMENT RECORD DOC. NO. A01999157  
N=646075.7350, E=2302830.6630

N 1/4 COR SEC 19, T.1 S., R.9 W.  
1/24/05 MONUMENT RECORD DOC. NO. A01889064  
N=646058.1130, E=2305007.0620

NE COR SEC 19, T.1 S., R.9 W.  
1/24/05 MONUMENT RECORD DOC. NO. A01889064  
N=646055.3982, E=2307659.9504

SW COR SEC 19, T.1 S., R.9 W.  
1/24/05 MONUMENT RECORD DOC. NO. A01889064  
N=640754.5140, E=2302817.3540

S 1/4 COR SEC 19, T.1 S., R.9 W.  
1/24/05 MONUMENT RECORD DOC. NO. A01889064  
N=640776.3630, E=2304998.5800



NW COR SEC 18, T.1 S., R.9 W.  
1/24/05 MONUMENT RECORD DOC. NO. A01889068  
N=651267.1882, E=2302840.8335

N 1/4 COR SEC 18, T.1 S., R.9 W.  
1/24/05 MONUMENT RECORD DOC. NO. A01889068  
N=651262.6048, E=2305039.4263

W 1/4 COR SEC 18, T.1 S., R.9 W.  
1/24/05 MONUMENT RECORD DOC. NO. A01889068  
N=648812.8882, E=2302835.6321

CENTER SEC 18, T.1 S., R.9 W.  
5/15/07 MONUMENT RECORD DOC. NO. A02042758  
N=648734.8334, E=2305029.1004  
N=648660.5951, E=2305029.6895

E 1/4 COR SEC 18, T.1 S., R.9 W.  
1/24/05 MONUMENT RECORD DOC. NO. A01889068  
N=648650.4570, E=2307663.3040

NW COR SEC 17, T.1 S., R.9 W.  
1/24/05 MONUMENT RECORD DOC. NO. A01889067  
N=651256.2073, E=2307668.5671

STATE OF MISSOURI )  
CITY OF ST. LOUIS ) SS

I, RONNIE D. LOWE, AN ILLINOIS PROFESSIONAL LAND SURVEYOR, CERTIFY THAT I HAVE SURVEYED THE PLAT OF HIGHWAY SHOWN HEREON AND THAT THIS PROFESSIONAL SERVICE CONFORMS TO THE CURRENT ILLINOIS MINIMUM STANDARDS FOR A BOUNDARY SURVEY FOR THE PROPOSED PARCEL(S) TO BE ACQUIRED BY THE STATE OF ILLINOIS, DEPARTMENT OF TRANSPORTATION, SHOWN HEREON.

DATED \_\_\_\_\_  
RONNIE D. LOWE, PLS NO. 035-003363  
LICENSE EXPIRATION DATE: 11/30/2010

COMPLETION DATE OF FIELD WORK PERFORMED  
LAND SURVEY: OCTOBER 06, 2006  
RIGHT OF WAY STAKING: JUNE 02, 2009

**DAVID MASON & ASSOCIATES** Engineering Architecture Surveying  
800 South Vandevanter Avenue  
St. Louis, MO 63110  
(314) 634-1030  
ILLINOIS LICENCE NO: 184-000485  
Expiration Date: April 30, 2011

ILLINOIS DEPARTMENT OF TRANSPORTATION  
**PLAT OF HIGHWAYS**  
FAP ROUTE 809 (IL 158)  
SECTION (133,134) RS-4, 135 RS-5  
MONROE AND ST. CLAIR COUNTY  
JOB NO. R-98-008-03

SCALE: 1" = 50'  
SHEET 116 OF 127  
ILLINOIS DEPARTMENT OF TRANSPORTATION  
DIVISION OF HIGHWAYS/DISTRICT 8  
1102 EASTPORT PLAZA DRIVE  
COLLINSVILLE, ILLINOIS 62234-6198  
SHEET 1 IS A COVER SHEET

NO.	DATE	DESCRIPTION	BY

#401888  
DATE-TIME  
CON-SPEC  
REF  
REF  
REF

PLOT DATE: \*DATE-TIME\*