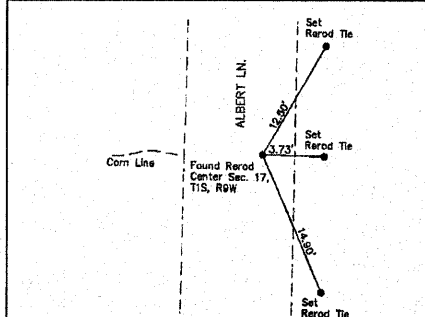
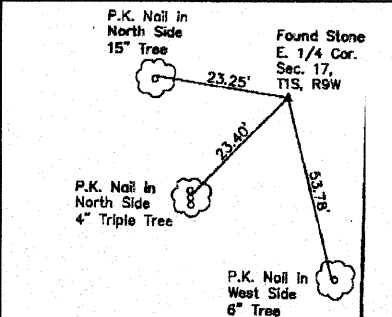


FAP ROUTE	SECTION	COUNTY	TOTAL SHEETS	SHEET NO.
809	133,134 RS-4, 135 RS-5	MONROE/ST. CLAIR	762	233
STA. TO STA.		CONTRACT NO.: 76408 & 76447		
		R-98-008-03		

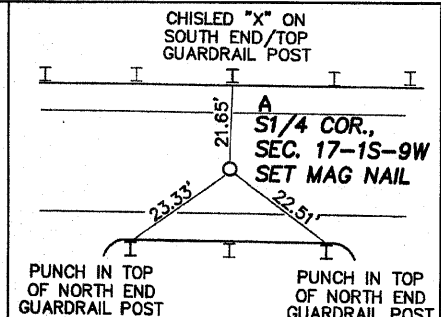
NO.	DATE	DESCRIPTION	BY



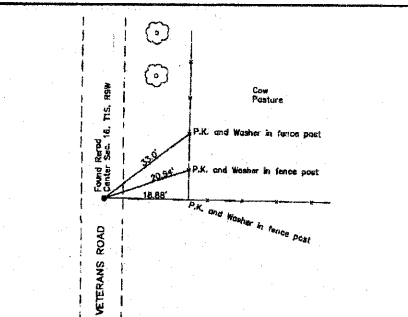
CENTER SEC 17, T.1 S., R.9 W.
12/2/04 MONUMENT RECORD DOC. NO. A01880783
N=648550.6404, E=2310314.4503



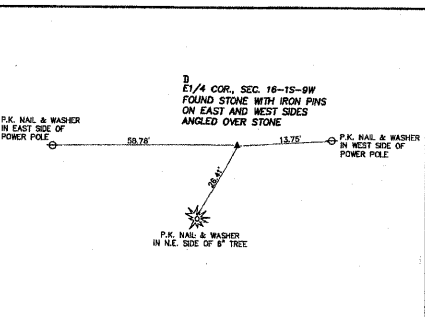
E 1/4 COR SEC 17, T.1 S., R.9 W.
12/2/04 MONUMENT RECORD DOC. NO. A01880783
N=648449.0414, E=2312966.0408



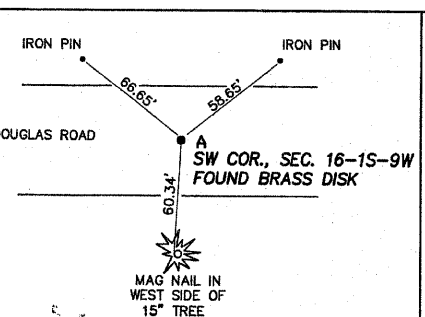
S 1/4 COR SEC 17, T.1 S., R.9 W.
1/5/05 MONUMENT RECORD DOC. NO. A01889067
N=645942.5540, E=2310308.397



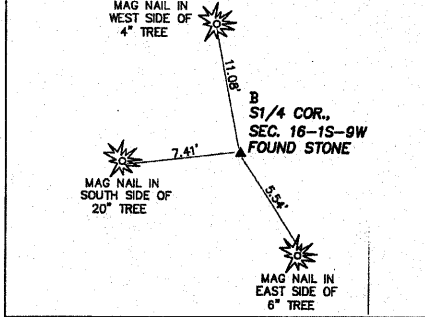
CENTER SEC 16, T.1 S., R.9 W.
12/2/04 MONUMENT RECORD DOC. NO. A01880782
N=648443.5550, E=2315615.6413



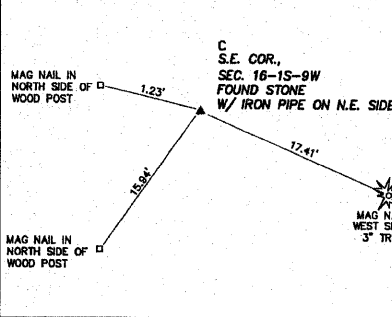
E 1/4 SEC 16, T.1 S., R.9 W.
1/24/05 MONUMENT RECORD DOC. NO. A01889066
N=648409.9124, E=2318267.4082



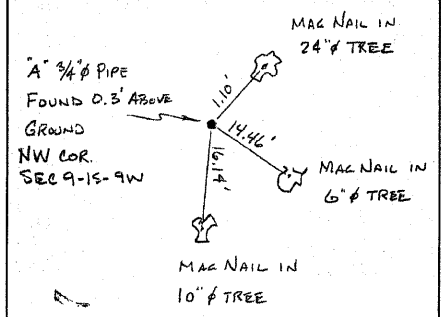
SW COR SEC 16, T.1 S., R.9 W.
1/24/05 MONUMENT RECORD DOC. NO. A01889066
N=645832.5386, E=2312962.3235



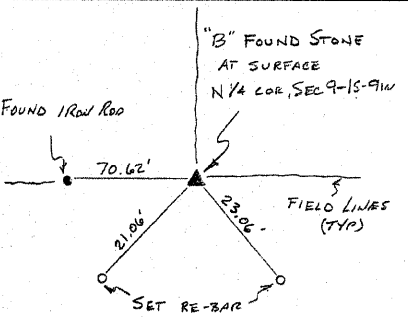
S 1/4 COR SEC 16, T.1 S., R.9 W.
1/24/05 MONUMENT RECORD DOC. NO. A01889066
N=645824.4501, E=2315612.2140



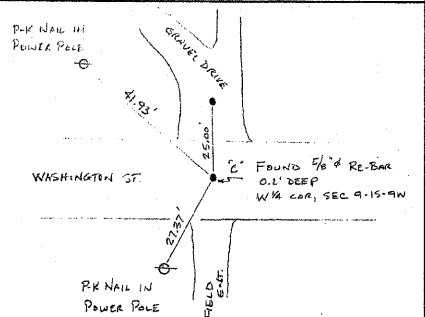
SE COR SEC 16, T.1 S., R.9 W.
1/24/05 MONUMENT RECORD DOC. NO. A01889066
N=645781.0295, E=2318264.6016



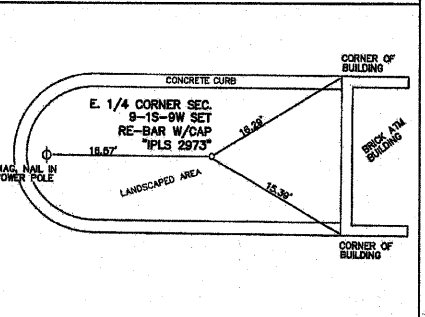
NW COR SEC 9, T.1 S., R.9 W.
1/24/05 MONUMENT RECORD DOC. NO. A01889072
N=656345.5612, E=2313006.5686



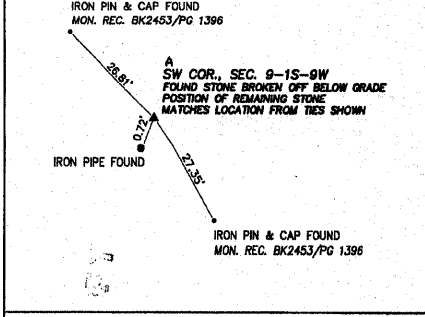
N 1/4 COR SEC 9, T.1 S., R.9 W.
1/24/05 MONUMENT RECORD DOC. NO. A01889072
N=656342.5920, E=2315643.3300



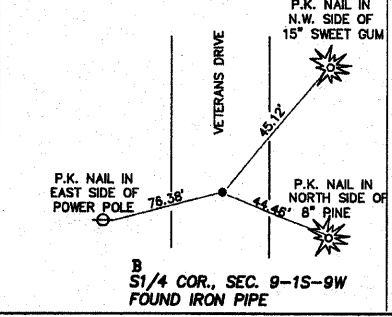
W 1/4 COR SEC 9, T.1 S., R.9 W.
1/24/05 MONUMENT RECORD DOC. NO. A01889072
N=653694.9681, E=2312987.5235



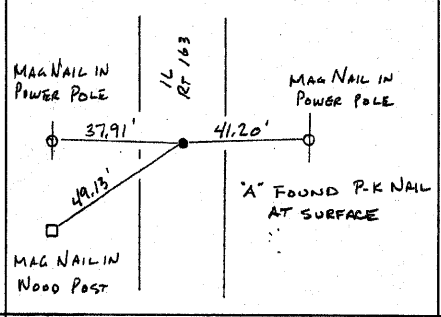
E 1/4 COR SEC 9, T.1 S., R.9 W.
8/21/07 MONUMENT RECORD DOC. NO. A02061613
N=653695.5471, E=2318275.3421



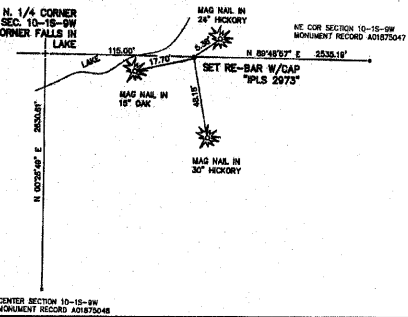
SW COR SEC 9, T.1 S., R.9 W.
1/24/05 MONUMENT RECORD DOC. NO. A01889065
N=651066.4643, E=2312977.3857



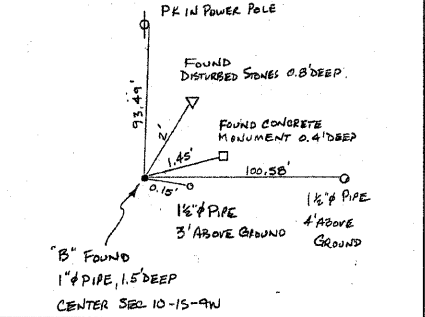
S 1/4 COR SEC 9, T.1 S., R.9 W.
1/24/05 MONUMENT RECORD DOC. NO. A01889065
N=651062.8530, E=2315618.9155



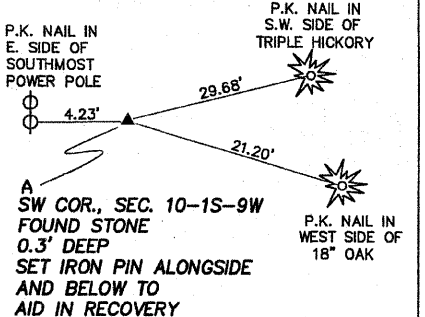
NW COR SEC 10, T.1 S., R.9 W.
11/1/04 MONUMENT RECORD DOC. NO. A01875048
N=656331.6605, E=2318281.6540



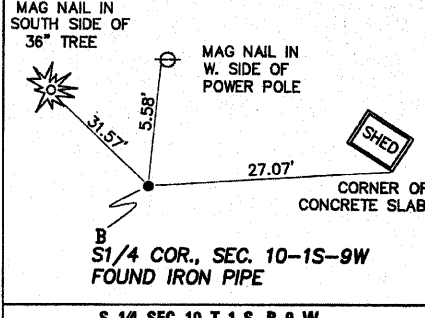
N 1/4 COR SEC 10, T.1 S., R.9 W.
8/21/07 MONUMENT RECORD DOC. NO. A02061611
N=656340.2360, E=2320948.6640



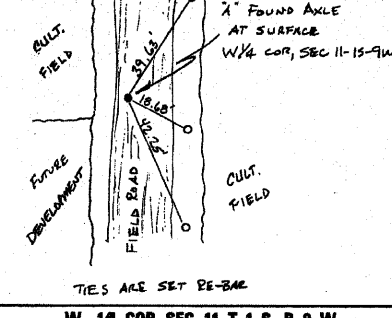
CENTER SEC 10, T.1 S., R.9 W.
11/1/04 MONUMENT RECORD DOC. NO. A01875048
N=653709.7642, E=2320928.3272



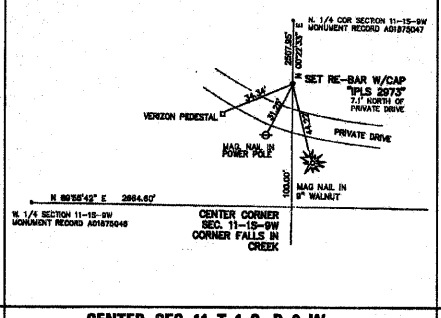
SW COR SEC 10, T.1 S., R.9 W.
1/24/05 MONUMENT RECORD DOC. NO. A01889071
N=651054.6109, E=2318269.0178



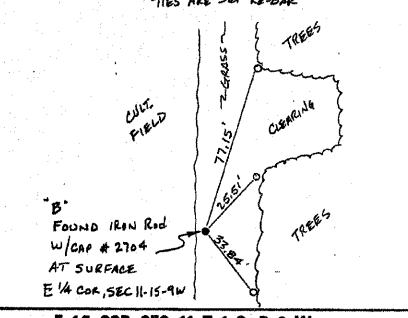
S 1/4 COR SEC 10, T.1 S., R.9 W.
1/24/05 MONUMENT RECORD DOC. NO. A01889071
N=651063.2050, E=2320910.0387



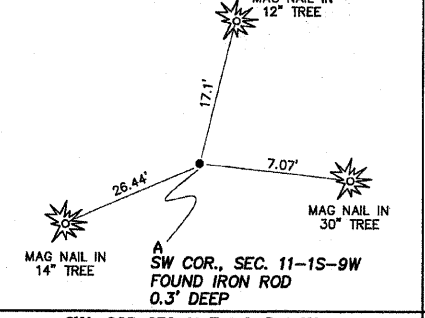
W 1/4 COR SEC 11, T.1 S., R.9 W.
11/1/04 MONUMENT RECORD DOC. NO. A01875046
N=653720.4721, E=2323580.6648



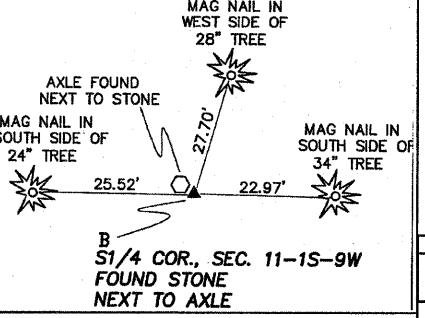
CENTER SEC 11, T.1 S., R.9 W.
8/21/07 MONUMENT RECORD DOC. NO. A02061612
N=653723.8010, E=2326245.2090



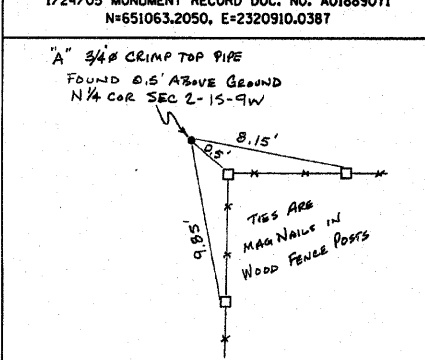
E 1/4 COR SEC 11, T.1 S., R.9 W.
11/1/04 MONUMENT RECORD DOC. NO. A01875046
N=653689.2746, E=2328928.7965



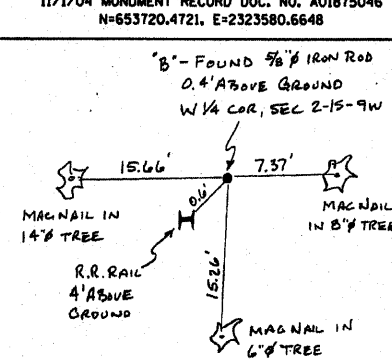
SW COR SEC 11, T.1 S., R.9 W.
1/24/05 MONUMENT RECORD DOC. NO. A01889070
N=651078.5564, E=2323578.0571



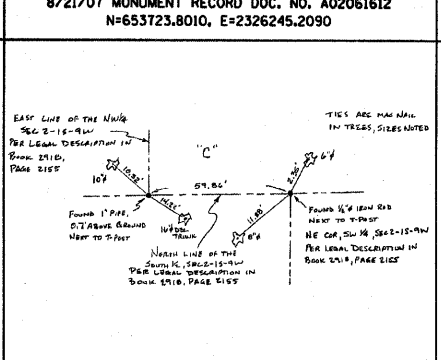
S 1/4 COR SEC 11, T.1 S., R.9 W.
1/24/05 MONUMENT RECORD DOC. NO. A01889070
N=651064.9162, E=2326238.9394



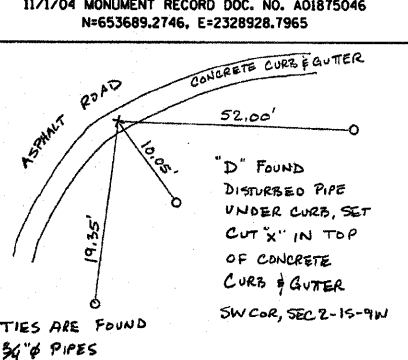
N 1/4 COR SEC 2, T.1 S., R.9 W.
11/1/04 MONUMENT RECORD DOC. NO. A01875047
N=661789.2622, E=2326131.7539



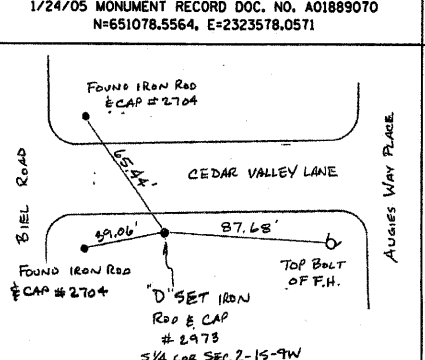
W 1/4 COR SEC 2, T.1 S., R.9 W.
11/1/04 MONUMENT RECORD DOC. NO. A01875047
N=658973.3451, E=2323509.8501



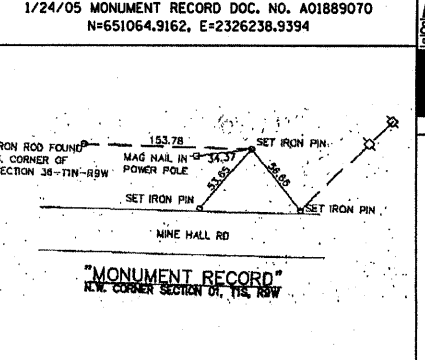
CENTER SEC 2, T.1 S., R.9 W.
11/1/04 MONUMENT RECORD DOC. NO. A01875047
N=658970.6144, E=2326203.9738
N=658970.7532, E=2326263.8318



SW COR SEC 2, T.1 S., R.9 W.
11/1/04 MONUMENT RECORD DOC. NO. A01875047
N=656348.7560, E=2323598.7800



SW COR SEC 2, T.1 S., R.9 W.
11/1/04 MONUMENT RECORD DOC. NO. A01875047
N=656331.6360, E=2326262.3140



NW COR SEC 1, T.1 S., R.9 W.
1/18/02 MONUMENT RECORD DOC. NO. A01658099
N=661766.2430, E=2328935.3100

STATE OF MISSOURI)
CITY OF ST. LOUIS) SS

I, RONNIE D. LOWE, AN ILLINOIS PROFESSIONAL LAND SURVEYOR, CERTIFY THAT I HAVE SURVEYED THE PLAT OF HIGHWAY SHOWN HEREON AND THAT THIS PROFESSIONAL SERVICE CONFORMS TO THE CURRENT ILLINOIS MINIMUM STANDARDS FOR A BOUNDARY SURVEY FOR THE PROPOSED PARCEL(S) TO BE ACQUIRED BY THE STATE OF ILLINOIS, DEPARTMENT OF TRANSPORTATION, SHOWN HEREON.

DATED _____
RONNIE D. LOWE, PLS NO. 035-003363
LICENSE EXPIRATION DATE: 11/30/2010

COMPLETION DATE OF FIELD WORK PERFORMED
LAND SURVEY: OCTOBER 06, 2006
RIGHT OF WAY STAKING: JUNE 02, 2009

DAVID MASON & ASSOCIATES
Engineering Architecture Surveying
800 South Vandeventer Avenue
St. Louis, MO 63110
(314) 534-1030
ILLINOIS LICENCE NO: 184-000485
Expiration Date: April 30, 2011

ILLINOIS DEPARTMENT OF TRANSPORTATION
PLAT OF HIGHWAYS
FAP ROUTE 809 (IL 158)
SECTION (133,134) RS-4, 135 RS-5 & (133,134) RS-5, 135 RS-6
MONROE AND ST. CLAIR COUNTY
JOB NO. R-98-008-03

