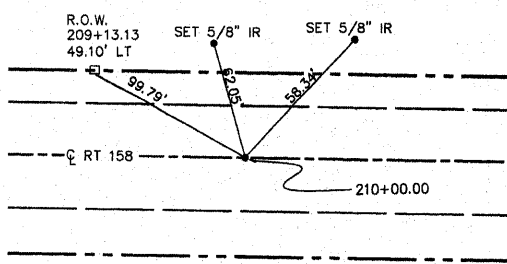


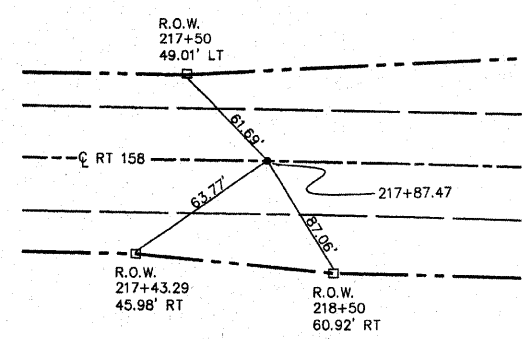
FAP ROUTE	SECTION	COUNTY	TOTAL SHEETS	SHEET NO.
809	133.134 RS-4, 135 RS-5	MONROE/ ST. CLAIR	1762	236
STA.		TO STA.		
CONTRACT NO.:		76408 & 76A47		
R-98-008-03				

TIES TO CL POINT
STA. 210+00.00
MAG NAIL



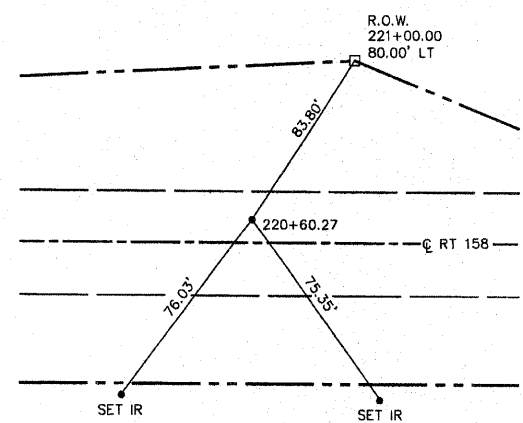
N 646183.7875
E 2301052.7185

TIES TO P.C.
STA. 217+87.47
MAG NAIL



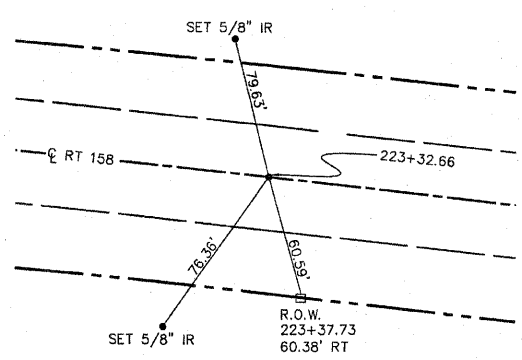
N 646174.9984
E 2301840.1327

TIES TO P.I.
STA. 220+60.27
MAG NAIL



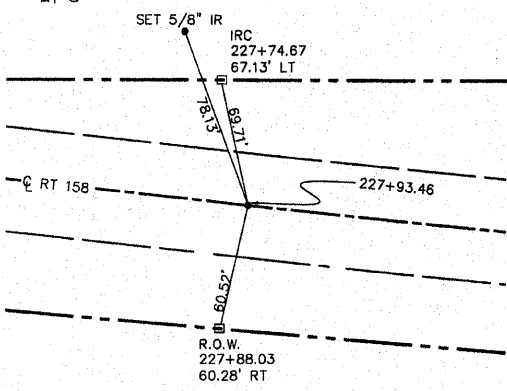
ALL TIES ARE DIRECT
N 646171.9536
E 2302112.9180

TIES TO P.T.
STA. 223+32.66
MAG NAIL



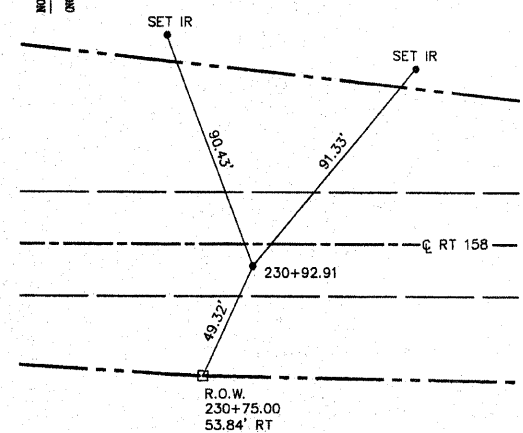
N 646143.0057
E 2302384.1802

TIES TO P.C.
STA. 227+93.46
MAG NAIL



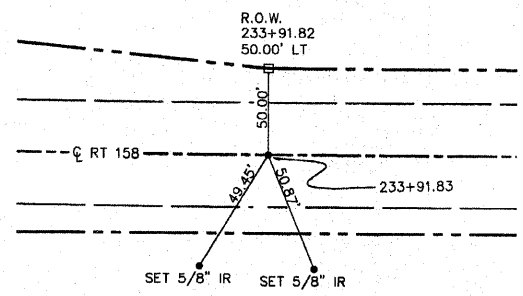
N 646094.1092
E 2302842.3751

TIES TO P.I.
STA. 230+92.91
MAG NAIL



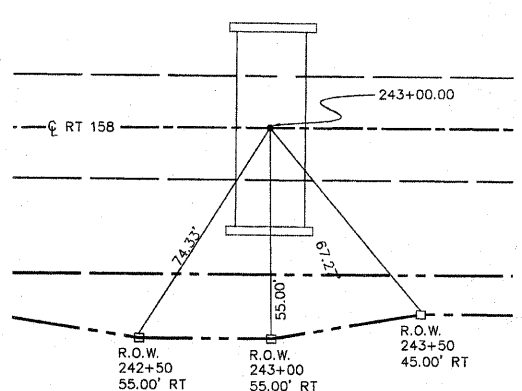
ALL TIES ARE DIRECT
N 646062.5328
E 2303140.1426

TIES TO P.T.
STA. 233+91.83
MAG NAIL



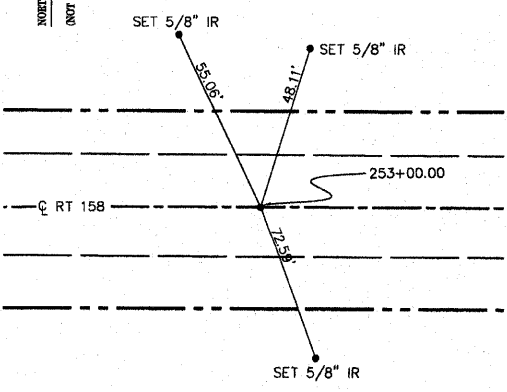
N 646061.7698
E 2303439.6002

TIES TO CL POINT
STA. 243+00.00
MAG NAIL



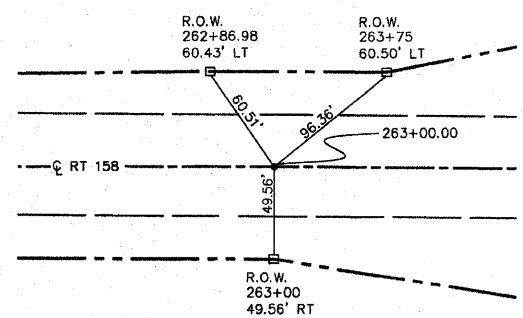
N 646080.0633
E 2304347.7719

TIES TO CL POINT
STA. 253+00.00
MAG NAIL



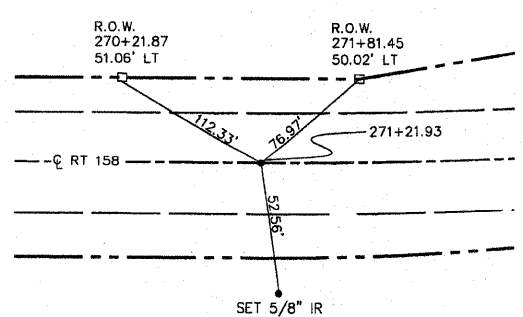
N 646058.1837
E 2305347.7702

TIES TO CL POINT
STA. 263+00.00
MAG NAIL



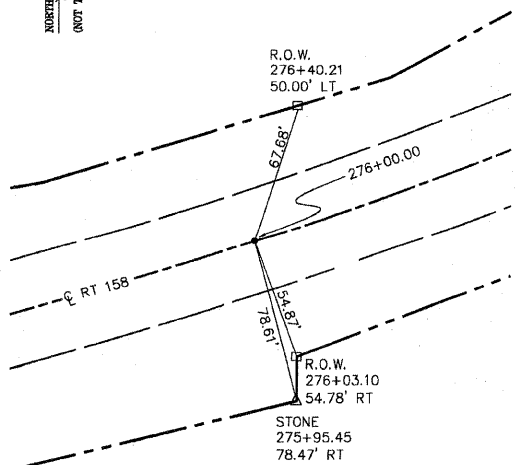
N 646056.3040
E 2305347.7684

TIES TO P.C.
STA. 271+21.93
MAG NAIL



N 646054.7580
E 2307169.6940

TIES TO CL POINT
STA. 276+00.00
MAG NAIL



N 646131.2843
E 2307639.4510

NO.	DATE	DESCRIPTION	BY

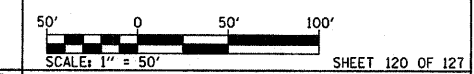
STATE OF MISSOURI)
) SS
CITY OF ST. LOUIS)

I, RONNIE D. LOWE, AN ILLINOIS PROFESSIONAL LAND SURVEYOR, CERTIFY THAT I HAVE SURVEYED THE PLAT OF HIGHWAY SHOWN HEREON AND THAT THIS PROFESSIONAL SERVICE CONFORMS TO THE CURRENT ILLINOIS MINIMUM STANDARDS FOR A BOUNDARY SURVEY FOR THE PROPOSED PARCEL(S) TO BE ACQUIRED BY THE STATE OF ILLINOIS, DEPARTMENT OF TRANSPORTATION, SHOWN HEREON.

DATED _____
RONNIE D. LOWE, PLS NO. 035-003363
LICENSE EXPIRATION DATE: 11/30/2010

DAVID MASON & ASSOCIATES Engineering Architecture Surveying
800 South Vandeventer Avenue
St. Louis, MO 63110
(314) 634-1080
ILLINOIS LICENCE NO: 184-000485
Expiration Date: April 30, 2011

ILLINOIS DEPARTMENT OF TRANSPORTATION
PLAT OF HIGHWAYS
FAP ROUTE 809 (IL 158)
SECTION (133,134) RS-4, 135 RS-5
MONROE AND ST. CLAIR COUNTY
JOB NO. R-98-008-03



COMPLETION DATE OF FIELD WORK PERFORMED
LAND SURVEY: OCTOBER 06, 2006
RIGHT OF WAY STAKING: JUNE 02, 2009

ILLINOIS DEPARTMENT OF TRANSPORTATION
DIVISION OF HIGHWAYS/DISTRICT 8
1102 EASTPORT PLAZA DRIVE
COLLINSVILLE, ILLINOIS 62234-6198
SHEET 1 IS A COVER SHEET

DATE
DATE-TIME
GEN-SPEC
REF
REF
REF

PLOT DATE: *DATE-TIME*