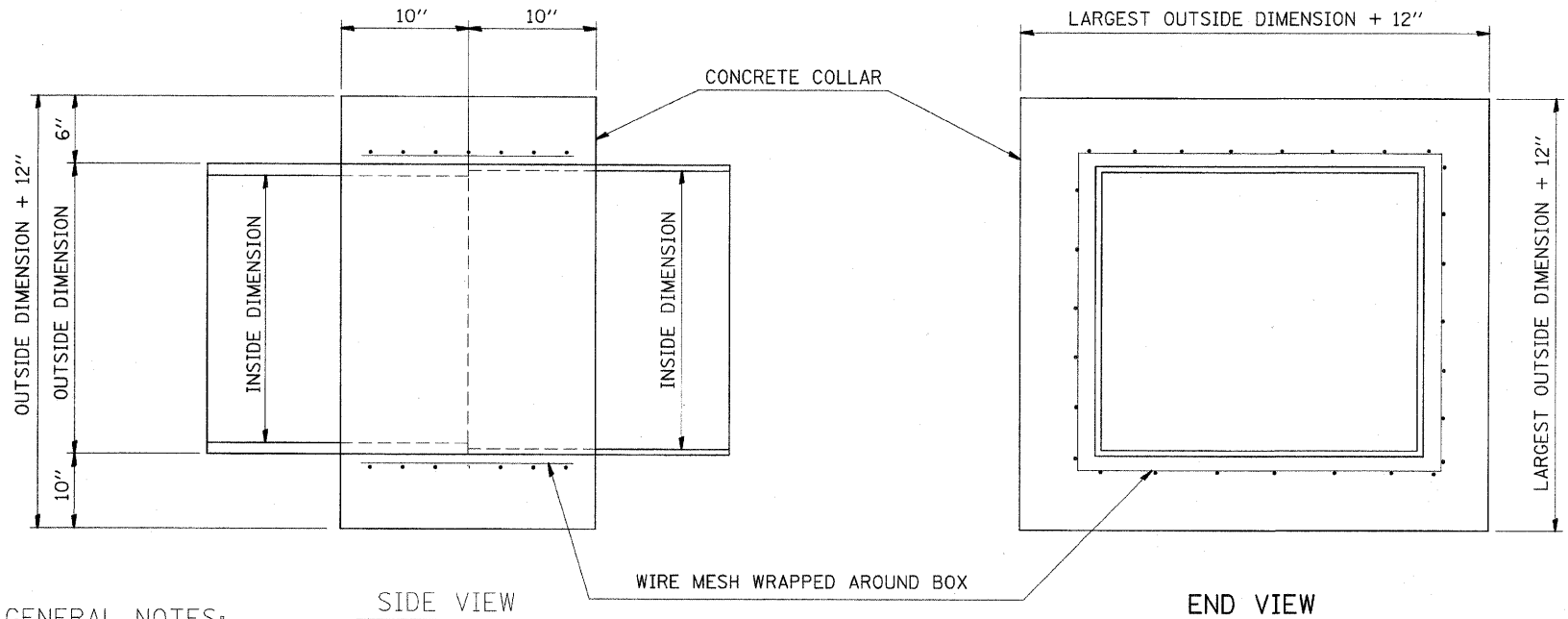


F.A.P. RTE.	SECTION	COUNTY	TOTAL SHEETS	SHEET NO.
809	(133,134)RS-5,135RS-6	ST. CLAIR	762	323
STA. _____		TO STA. _____		
FED. ROAD DIST. NO. _____		ILLINOIS FED. AID PROJECT		



GENERAL NOTES:

1. CLASS SI CONCRETE SHALL BE USED THROUGHOUT.
2. WHEN CONCRETE COLLARS ARE USED TO CONNECT BOXES OF DIFFERENT OUTSIDE DIMENSIONS, THE CONCRETE COLLAR SHALL BE FORMED USING THE LARGEST OUTSIDE DIMENSION. (SEE END VIEW)
3. THE WIRE MESH SHALL WEIGHT NOT LESS THAN 54 POUNDS PER 100 SQ. FT.
4. CONCRETE COLLARS WILL BE PAID FOR AT THE CONTRACT UNIT PRICE, EACH, FOR CONCRETE COLLARS INCLUDING ALL MATERIAL AND LABOR SPECIFIED TO COMPLETE THE WORK IN PLACE.

CULVERTS

- | | |
|------------------------|------------------------|
| STA. 381+18.92 LT | STA. 503+46.73 LT & RT |
| STA. 382+44.64 LT | STA. 592+20 LT & RT |
| STA. 386+32.04 LT & RT | STA. 629+97.73 LT & RT |
| STA. 388+45 LT & RT | STA. 647+48.58 LT |
| STA. 468+96.82 LT & RT | STA. 687+45 LT & RT |
| STA. 474+57.20 LT | |
| STA. 477+60 LT & RT | |

REVISIONS	
NAME	DATE

DRAINAGE DETAILS
CONCRETE COLLAR DETAIL
(BOX CULVERT CONNECTION)
 FAP ROUTE 809 (IL 158)
 SECTION (133, 134)RS-5, 135RS-6
 ST. CLAIR COUNTY
 DRAWN BY: _____

PLAN	DATE
NO. _____	BY _____
NO. _____	DATE _____
NO. _____	DATE _____
NO. _____	DATE _____
NO. _____	DATE _____
NO. _____	DATE _____
NO. _____	DATE _____
NO. _____	DATE _____
NO. _____	DATE _____