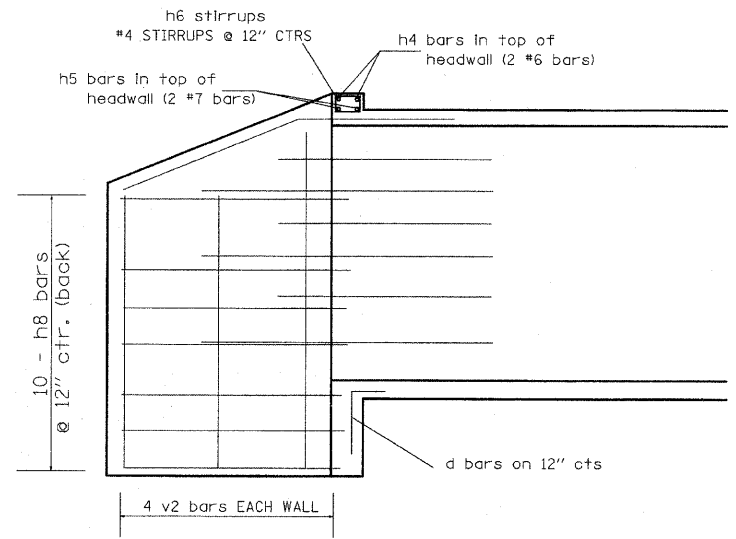
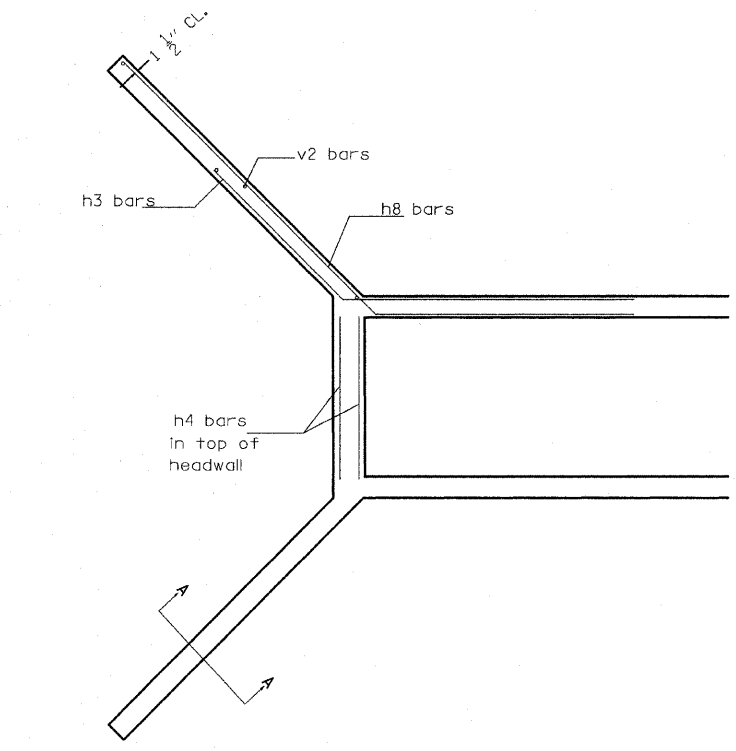


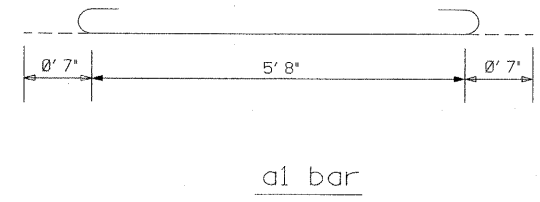
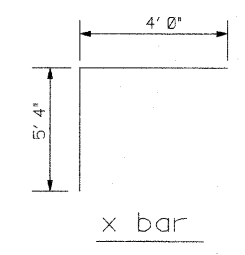
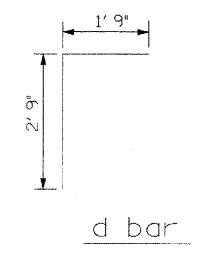
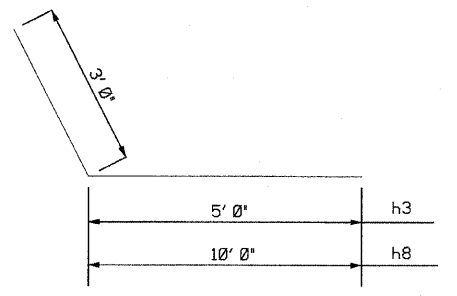
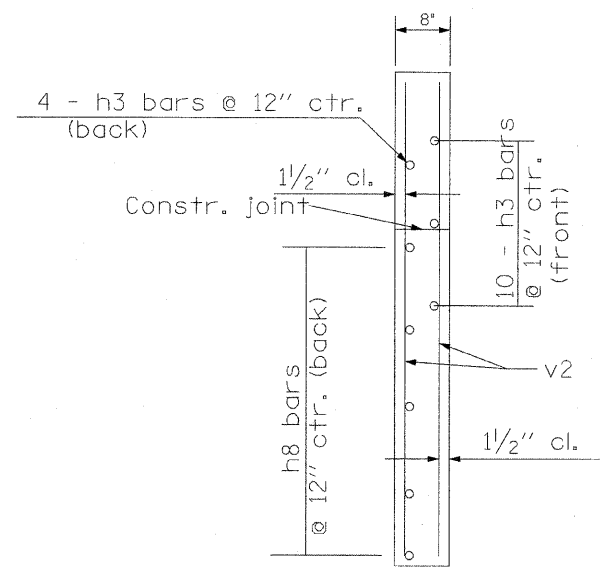
F.A.P. RTE.	SECTION	COUNTY	TOTAL SHEETS	SHEET NO.
809	(133,134)RS-5,135RS-6	ST. CLAIR	762	347
STA.		TO STA.		
FED. ROAD DIST. NO.		ILLINOIS FED. AID PROJECT		

STA. 456+93.93  
WINGWALL REINFORCEMENT

PLAN	STRIPPED	DATE
NOTE BOOK	PLOTTED	BY
NO.	CHECKED	
	DATE	
	FILE NAME	



SECTION A-A



STA. 456+93.93  
BOTH SIDES

BILL OF MATERIAL				
Type	No.	Size	Length	Lbs
a1	164	#5	6' 10"	1168
a2	28	#4	5' 8"	106
h	7	#5	23' 2"	169
h1	16	#4	23' 2"	248
h2	16	#6	23' 2"	557
d	16	#4	4' 6"	48
h6	16	#4	3' 4"	36
h3	56	#9	8' 0"	1523
h8	40	#9	13' 0"	1768
v	70	#5	7' 10.5"	575
v1	70	#5	2' 2"	159
v2	16	#4	*10'	107
x	12	#5	9' 4"	118
x1	30	#5	1' 0"	32
CONCRETE		C.Y.		43.8
REINF. BARS		LBS.		6,614

\*AVERAGE 10' ACTUAL LENGTH VARIES

REVISIONS	
NAME	DATE

**DRAINAGE DETAILS  
CULVERT EXTENSIONS**

FAP ROUTE 809 (IL 158)  
SECTION (133, 134)RS-5, 135RS-6  
ST. CLAIR COUNTY

DRAWN BY:

DATE-TIME  
CON-SPEC  
REF