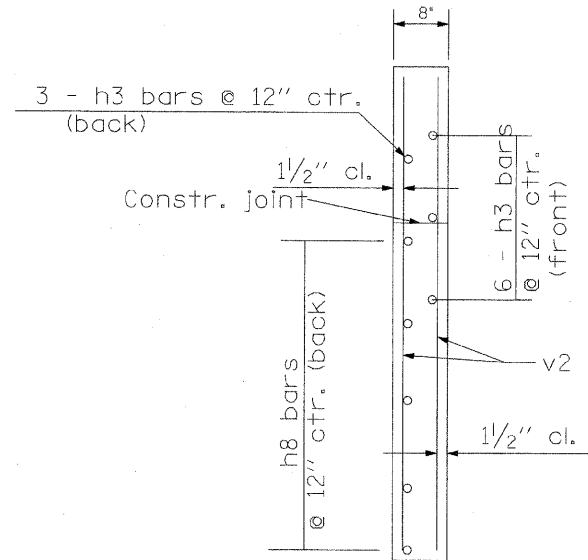
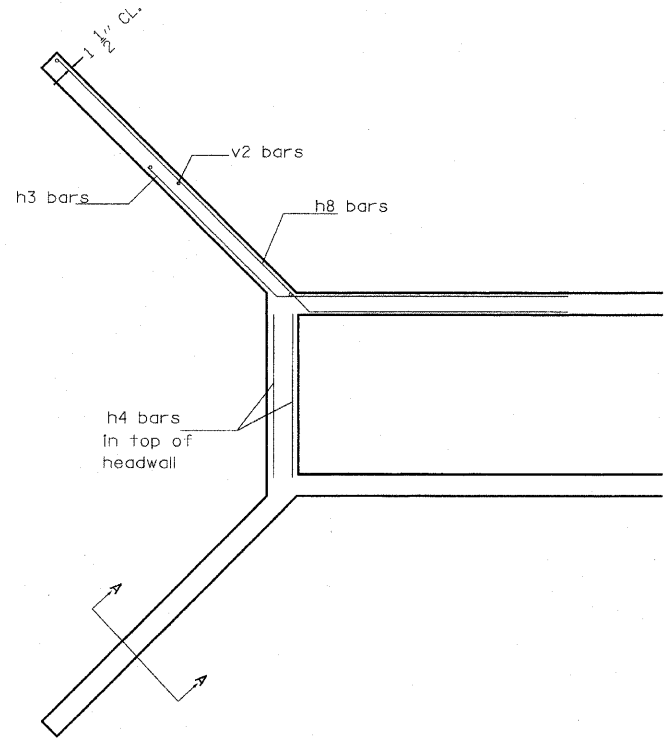


STA. 597+09.86
WINGWALL REINFORCEMENT

SECTION A-A

PLAN	SURVEYED	DATE
NOTE BOOK	PLOTTED	BY
NO.	CHECKED	
	DATE	
	BY	
	DATE	
	BY	
	DATE	
	BY	
	DATE	



STA. 597+09.86
LT SIDE

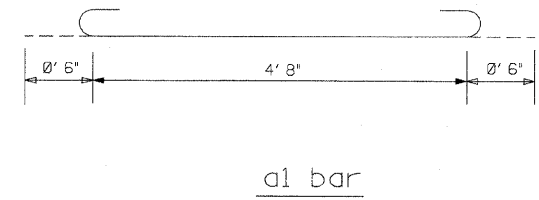
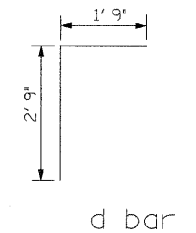
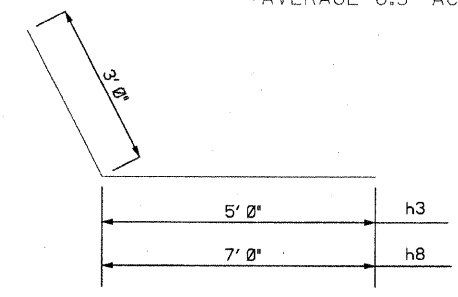
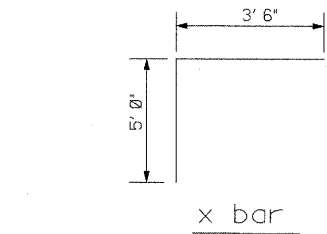
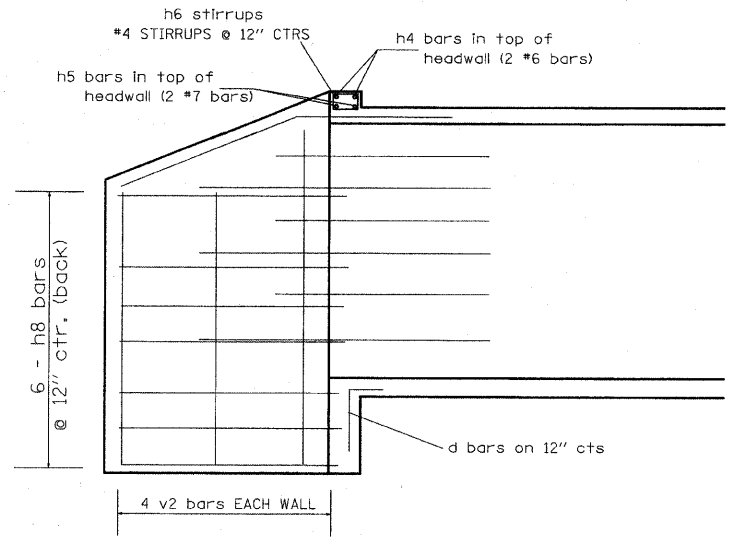
BILL OF MATERIAL				
Type	No.	Size	Length	Lbs
a1	72	#4	5' 8"	273
a2	14	#4	4' 6"	42
h	5	#5	26' 8"	139
h1	12	#5	26' 8"	334
h2	10	#5	26' 8"	278
d	6	#4	4' 6"	18
h6	6	#4	3' 4"	14
h3	18	#9	8' 0"	490
h8	12	#9	10' 0"	408
v	72	#4	5' 3.5"	255
v2	8	#4	*6' 5"	35
x	12	#5	8' 6"	107
x1	9	#5	1' 8"	16
CONCRETE		C.Y.		13
REINF. BARS		LBS.		2409

*AVERAGE 6.5' ACTUAL LENGTH VARIES

STA. 597+09.86
RT SIDE

BILL OF MATERIAL				
Type	No.	Size	Length	Lbs
a1	44	#4	5' 8"	167
a2	9	#4	4' 6"	27
h	5	#5	16' 2"	84
h1	12	#5	16' 2"	204
h2	10	#5	16' 2"	169
d	6	#4	4' 6"	18
h6	6	#4	3' 4"	14
h3	18	#9	8' 0"	490
h8	12	#9	10' 0"	408
v	72	#4	5' 3.5"	255
v2	8	#4	*6' 5"	35
x	12	#5	8' 6"	107
x1	9	#5	1' 0"	16
CONCRETE		C.Y.		9.2
REINF. BARS		LBS.		1994

*AVERAGE 6.5' ACTUAL LENGTH VARIES



REVISIONS	
NAME	DATE

**DRAINAGE DETAILS
CULVERT EXTENSIONS**

FAP ROUTE 809 (IL 158)
SECTION (133, 134)RS-5, 135RS-6
ST. CLAIR COUNTY

DRAWN BY: