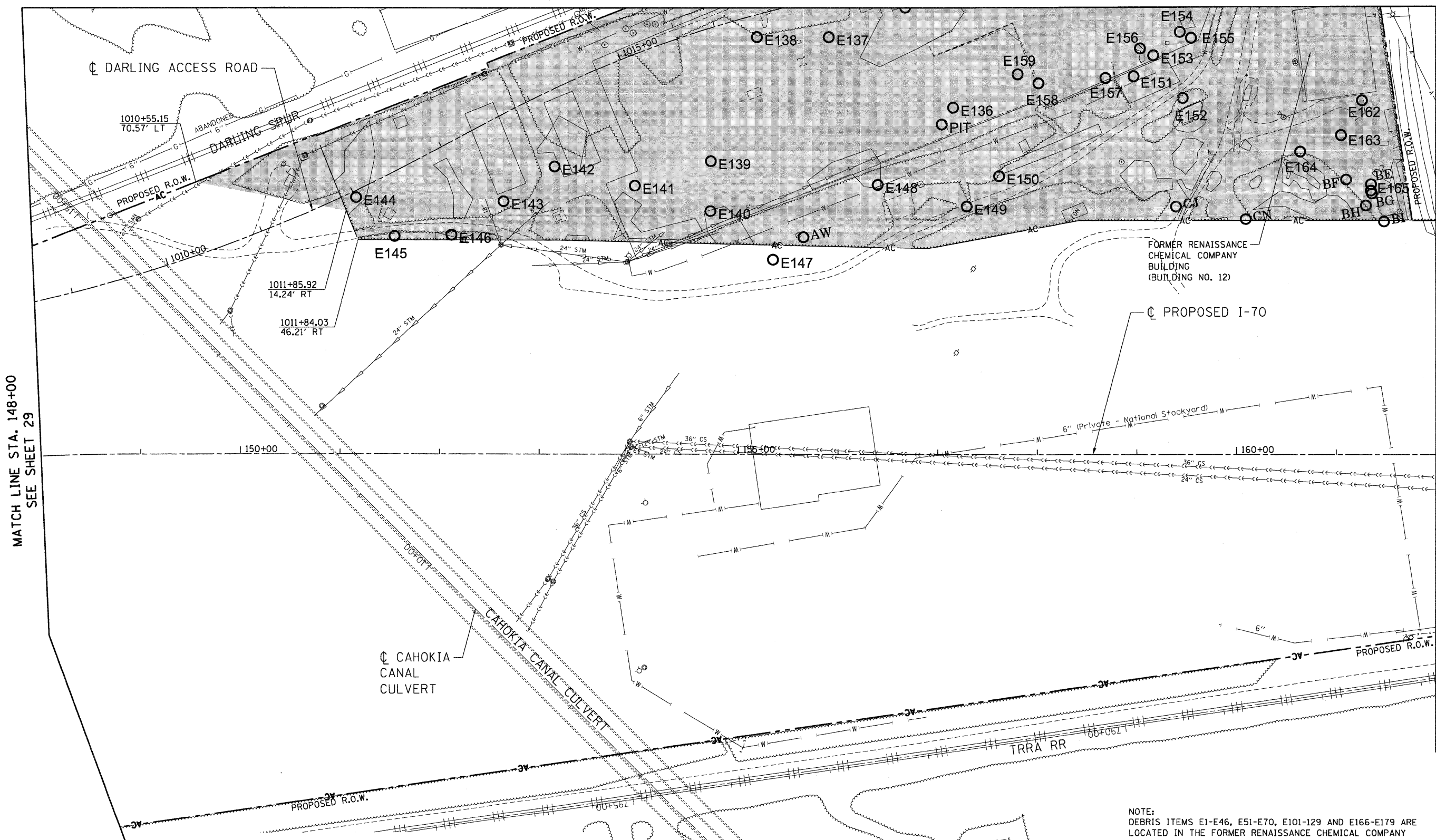
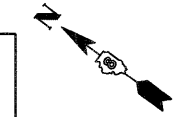




MATCH LINE "A"  
SEE SHEET 31



MATCH LINE STA. 148+00  
SEE SHEET 29

STA. 162+00  
BY OTHERS

**LEGEND**

-  CLEARING, SPECIAL
-  DEBRIS REMOVAL  
SEE SPECIAL PROVISIONS FOR  
LIST OF DEBRIS REMOVAL ITEMS.

NOTE:  
DEBRIS ITEMS E1-E46, E51-E70, E101-129 AND E166-E179 ARE  
LOCATED IN THE FORMER RENAISSANCE CHEMICAL COMPANY  
BUILDING. ID NUMBERS E47-E50 AND E71-E100 WERE NOT  
USED IN THE DEBRIS IDENTIFICATION.

\\_BDC\CON-99-MOTIF1.DGN, \\_BDC\CON-99-80RDR1.DGN, \\_BDC\CON-99-MOTIF1.DGN, \\_BDC\CON-99-HAZMAT1.DGN, \\_BDC\CON-99-MOTIF1.DGN  
 6-23-2010, 14:43:35  
 \\_BDC\CON-99-80RDR1.DGN, \\_BDC\CON-99-80RDR1.DGN, \\_BDC\CON-99-HAZMAT1.DGN, \\_BDC\CON-99-MOTIF1.DGN, \\_BDC\CON-99-MOTIF1.DGN  
 6-23-2010, 14:43:35

FILE NAME = #FILEL#		USER NAME = #USER#		DESIGNED - JB		REVISED -		STATE OF ILLINOIS DEPARTMENT OF TRANSPORTATION I-70 CONNECTION		PRELIMINARY SITE INVESTIGATION DEBRIS REMOVAL AND CLEARING PLANS STA. 148 + 00 TO STA. 162 + 00			F.A.P. RTE. 998	SECTION 82-2-1HVB	COUNTY ST. CLAIR	TOTAL SHEETS 285	SHEET NO. 30	
PLOT SCALE = #SCALE#		PLOT DATE = #DATE#		DRAWN - JB		REVISED -				SCALE: 1"=50'	SHEET NO.	OF SHEETS	STA.	TO STA.	CONTRACT NO. 76C44			
CHECKED - ACL		DATE - 06/04/10		CHECKED - ACL		REVISED -									ILLINOIS FED. AID PROJECT			

