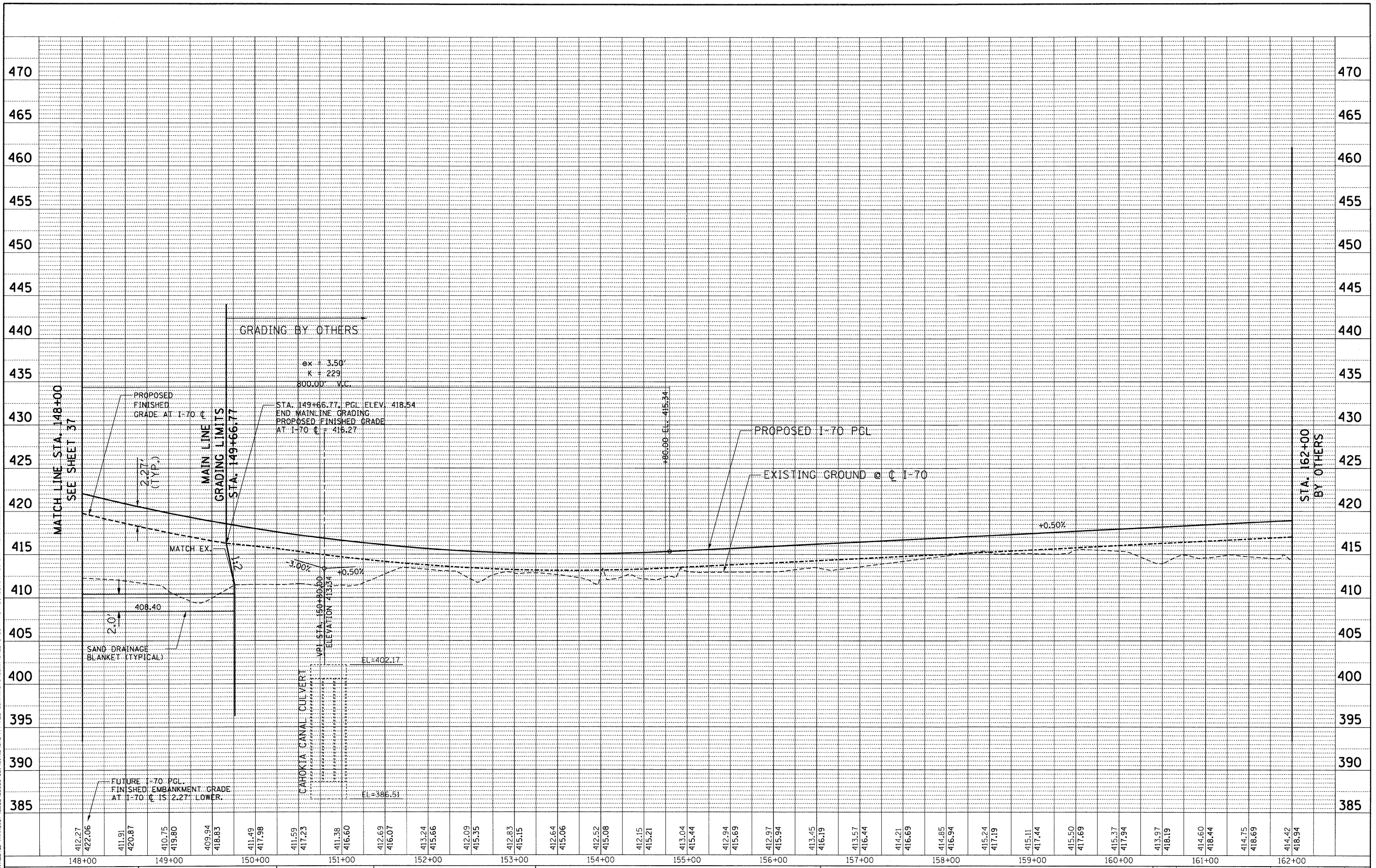


PLAN	REVISIONS	BY	DATE
NO.	NO.		
NOTE BOOK	ALIGNED	CHECKED	
	PLOTTED	CHECKED	
		DATE	

PROFILE	BY	DATE
NO.		
NOTE BOOK	GRADES CHECKED	
	STRUCTURE NOTATIONS CHKD	

6-03-2010, 14:46:02 BONDHJUD C:\S\804\KVA\HULL.D-TRANS-07\2202\28866-001\CIVIL\A040\09 ALL CONTRACTS\CONNSHEETS\CONTRACT 05\SUBCON\05-SHT-PROF-I-14882.DGN



FILE NAME =	USER NAME = #USER#	DESIGNED -	JB	REVISED -	
#FILE#		DRAWN -	JB	REVISED -	
		CHECKED -	ACL	REVISED -	
		DATE -	06/04/10	REVISED -	

PLOT SCALE = #SCALE#	
PLOT DATE = #DATE#	

STATE OF ILLINOIS	DESIGNED -	JB	REVISED -	
DEPARTMENT OF TRANSPORTATION	DRAWN -	JB	REVISED -	
	CHECKED -	ACL	REVISED -	
	DATE -	06/04/10	REVISED -	

**STATE OF ILLINOIS  
DEPARTMENT OF TRANSPORTATION**

I-70 CONNECTION

**PROPOSED I-70  
ROADWAY PROFILE**

STA. 148 + 00 TO STA. 162 + 00

SCALE: HORIZ. 1"=50'      VERT. 1"=5'

STA. \_\_\_\_\_ TO STA. \_\_\_\_\_

F.A.P. RTE.	SECTION	COUNTY	TOTAL SHEETS	SHEET NO.
998	82-2-1HVB	ST. CLAIR	285	38
FED. ROAD DIST. NO.		ILLINOIS FED. AID PROJECT		CONTRACT NO. 76C44



TENG & ASSOCIATES, INC.  
ENGINEERS/ARCHITECTS/PLANNERS  
CHICAGO, ILLINOIS