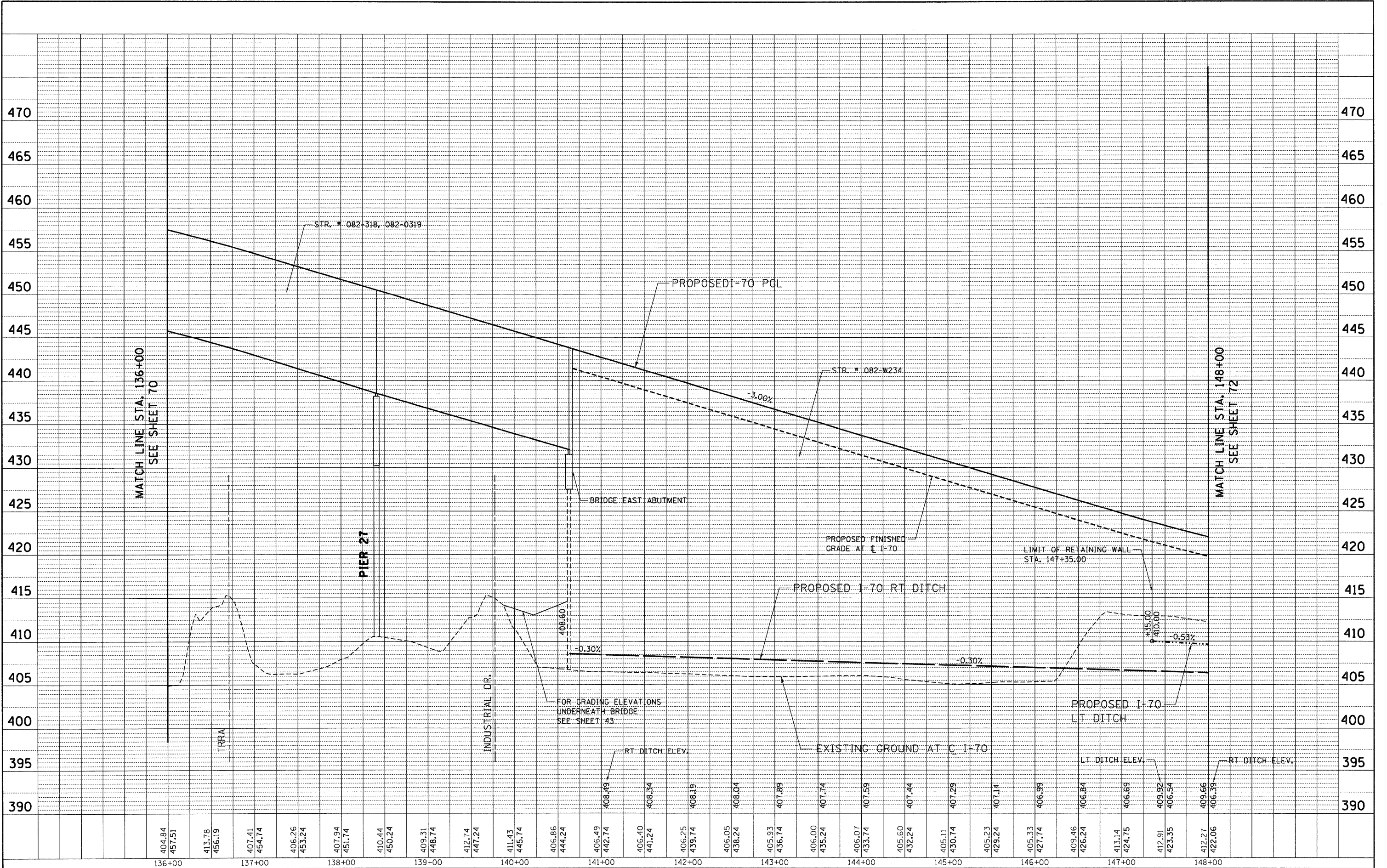


PLAN		DATE	
REVISION	BY		
ALIGNED			
NOTE BOOK			
CADD FILE NAME			

PROFILE		DATE	
REVISION	BY		
GRADES CHECKED			
STRUCTURE			
NOTATIONS			

6-03-2010, 1425426 BONDHUJONG
 C:\S-8044\WORK\ILLINOIS\TRANS\07-2282-28868-08\1\CTH\1\CAD\PPR ALL CONTRACTS\CONNS\SHEETS\CONTRACT 08\SUBCON\08-5HT-PROF2-13600.DGN



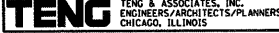
FILE NAME = USER NAME = #USER#
 #FILE#

DESIGNED -	JB	REVISED -	
DRAWN -	JB	REVISED -	
CHECKED -	ACL	REVISED -	
DATE -	06/04/10	REVISED -	

STATE OF ILLINOIS
DEPARTMENT OF TRANSPORTATION
 I-70 CONNECTION

PROPOSED I-70
DRAINAGE PROFILE
STA. 136+00 TO STA. 148+00
 SCALE: HORIZ. 1"=50' VERT. 1"=5'
 STA. TO STA.

F.A.P. RTE. 998	SECTION 82-2-IHVB	COUNTY ST. CLAIR	TOTAL SHEETS 285	SHEET NO. 71
CONTRACT NO. 76C44			ILLINOIS FED. AID PROJECT	



TENG & ASSOCIATES, INC.
 ENGINEERS, ARCHITECTS, PLANNERS
 CHICAGO, ILLINOIS