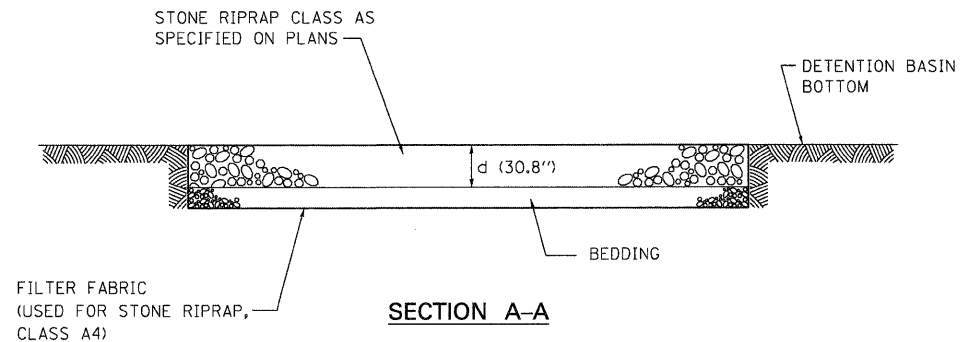
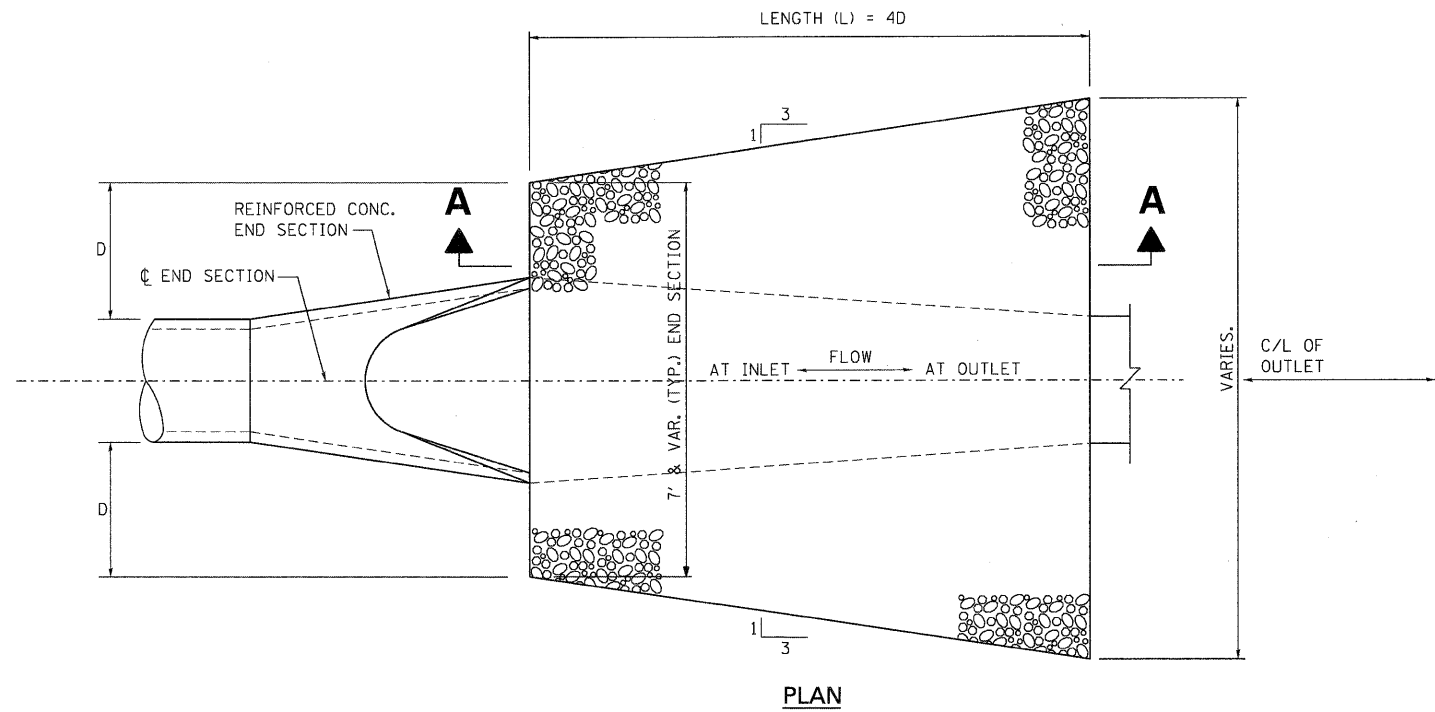


NOTE:
 1. THIS WORK SHALL BE CONSIDERED AS INCLUDED IN THE CONTRACT UNIT PRICE BID FOR THE SEWER REMOVAL ITEMS.

SEWER PLUG



RIPRAP APRON

N.T.S.

- NOTES:**
1. APRON WIDTH SHALL BE ADJUSTED TO MATCH CULVERT END SECTION WIDTH. SEE SHEET 76 FOR OUTLET PROTECTION AT BOX CULVERTS.
 2. BRIDGE DOWNSPOUTS ARE 12-INCH DIAMETER, RIPRAP AT BRIDGE SCUPPER OUTLETS SHOULD BE DESIGNED TO A DIA. = 12" AND THE DETAIL SHOWN HERE.

\DRCDNN-05-BORDEFILDEN...DRCDNN-03-SHT-DRAINAGEZDDN
 BONDHJUD \VFS-0044-VNYVAULTD-TRANS.07-2202-28868-001\CIVIL\G04\99 ALL CONTRACTS\CONNSHEETS CONTRACT 05\DRCDNN-05-SHT-DRAINAGEZDDN
 6-03-2010, 14:55:53

FILE NAME =	USER NAME = #USER#	DESIGNED - MFM	REVISED -	STATE OF ILLINOIS DEPARTMENT OF TRANSPORTATION	DRAINAGE DETAILS SEWER PLUG & RIPRAP APRON			F.A.P. RTE.	SECTION N/A	COUNTY	TOTAL SHEETS	SHEET NO.
#FILEL#		DRAWN - MFM	REVISED -		I-70 CONNECTION			998	82-2-1HVB	ST. CLAIR	285	80
	PLOT SCALE = #SCALE#	CHECKED - TKL	REVISED -		SCALE: N.T.S.			SHEET NO. OF SHEETS STA. TO STA.		CONTRACT NO. 76C44		
	PLOT DATE = #DATE#	DATE - 06/04/10	REVISED -		SCALE: N.T.S.			SHEET NO. OF SHEETS STA. TO STA.		FED. ROAD DIST. NO. [ILLINOIS] FED. AID PROJECT		

