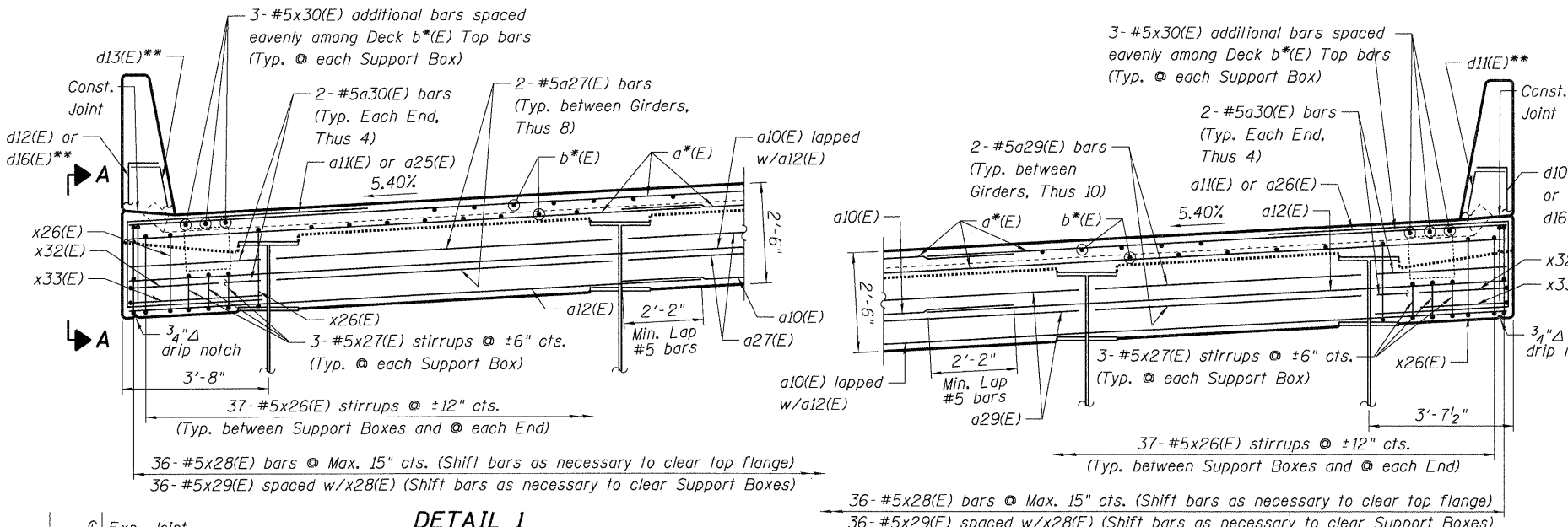


08220318-COHN-05-003-SULDON...08220318-COHN-05-003-SULDON...08220318-COHN-05-003-SULDON...08220318-COHN-05-003-SULDON...
 08220318-COHN-05-003-SULDON...08220318-COHN-05-003-SULDON...08220318-COHN-05-003-SULDON...08220318-COHN-05-003-SULDON...
 08220318-COHN-05-003-SULDON...08220318-COHN-05-003-SULDON...08220318-COHN-05-003-SULDON...08220318-COHN-05-003-SULDON...



EAST ABUTMENT BAR LIST

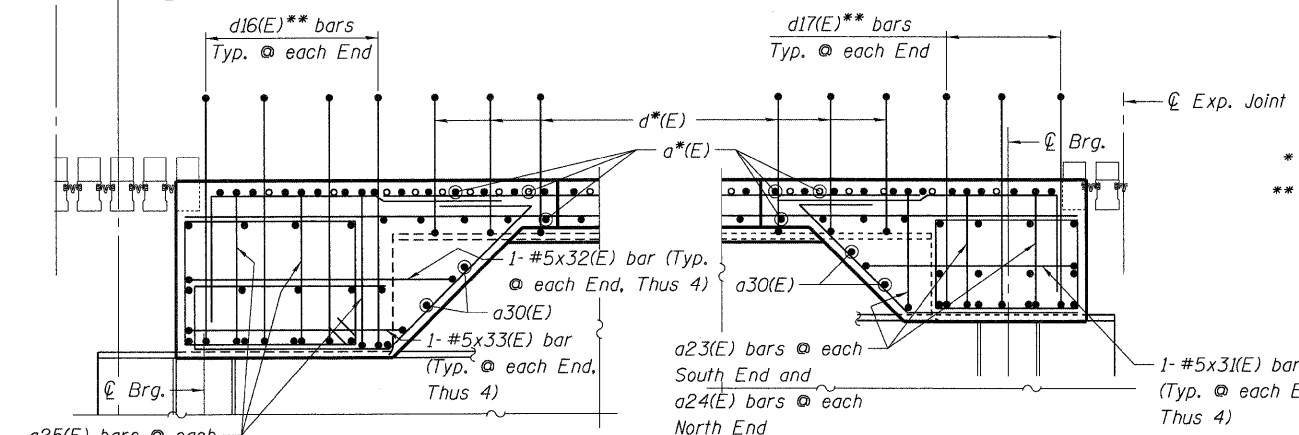
Bar	No.	Size	Length	Shape
a10(E)	16	#5	30'-0"	—
a12(E)	8	#5	14'-7"	—
a20(E)	8	#5	26'-8"	—
a27(E)	8	#5	8'-5"	—
a28(E)	10	#5	9'-2"	—
a30(E)	8	#5	3'-4"	—
x21(E)	83	#5	7'-8"	□
x22(E)	81	#5	6'-1"	□
x23(E)	82	#5	8'-4"	□
x24(E)	82	#5	5'-4"	□
x25(E)	81	#5	4'-0"	□
x31(E)	4	#5	9'-4"	□

PIER 23 BAR LIST

Bar	No.	Size	Length	Shape
a10(E)	20	#5	30'-0"	—
a12(E)	20	#5	14'-7"	—
a27(E)	8	#5	8'-5"	—
a29(E)	10	#5	6'-8"	—
a30(E)	8	#5	3'-4"	—
x26(E)	74	#5	9'-4"	□
x27(E)	72	#5	7'-3"	□
x28(E)	72	#5	10'-7"	□
x29(E)	72	#5	6'-5"	□
x30(E)	72	#5	4'-9"	□
x32(E)	4	#5	10'-0"	□
x33(E)	4	#5	9'-7"	□

DETAIL 1
(at Pier 23 EB)

DETAIL 2
(at Pier 23 WB)



ELEVATION A-A

ELEVATION B-B

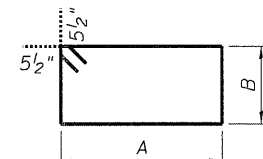
EAST ABUTMENT BILL OF MATERIAL

Item	Unit	Total
Concrete Superstructure	Cu. Yd.	35.6
Reinforcement Bars, Epoxy Coated	Pound	3,760

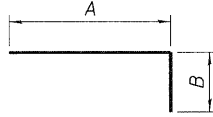
PIER 23 BILL OF MATERIAL

Item	Unit	Total
Concrete Superstructure	Cu. Yd.	59.2
Reinforcement Bars, Epoxy Coated	Pound	4,080

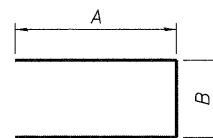
Bar	A	B
x21(E)	2'-0"	1'-4 1/2"
x22(E)	2'-0"	7"
x24(E)	4'-0"	1'-4"
x26(E)	2'-4"	1'-10 1/2"
x27(E)	2'-4"	10"
x29(E)	4'-8"	1'-9"
x31(E)	3'-3"	2'-10"
x32(E)	3'-3"	3'-6"
x33(E)	3'-3"	3'-1"



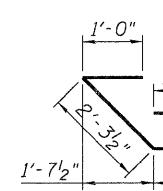
BARS x21(E), x22(E), x26(E) & x27(E)



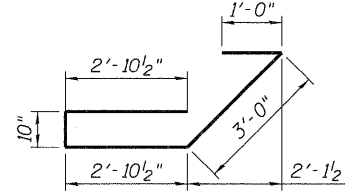
BARS x24(E) & x29(E)



BARS x31(E), x32(E) & x33(E)

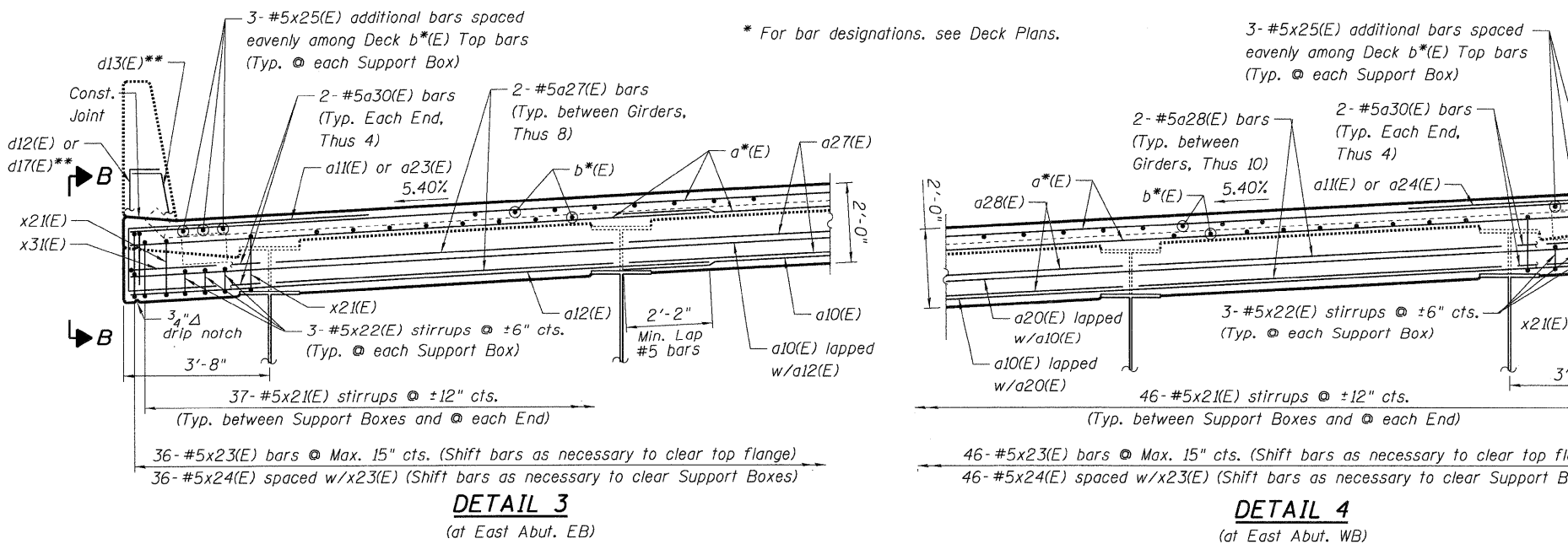


BAR x23(E)



BAR x28(E)

NOTE:
Work this sheet with Sheets S-22 through S-47.



DETAIL 3
(at East Abut. EB)

DETAIL 4
(at East Abut. WB)

**STATE OF ILLINOIS
DEPARTMENT OF TRANSPORTATION**
I-70 CONNECTION OVER
NS, TRRA, MCT AND INDUSTRIAL DR.

MODULAR EXPANSION JOINT
3 OF 4

F.A.P. RTE. 998	SECTION 82-2-1HVB	COUNTY ST. CLAIR	TOTAL SHEETS 285	SHEET NO. 156
SN 082-0318 (EB) & 0319 (WB)			CONTRACT NO. 76C44	
FED. ROAD DIST. NO.			ILLINOIS FED. AID PROJECT	



SCALE: SHEET NO. S-46 OF S-111 STA. 134+22.00 TO STA.