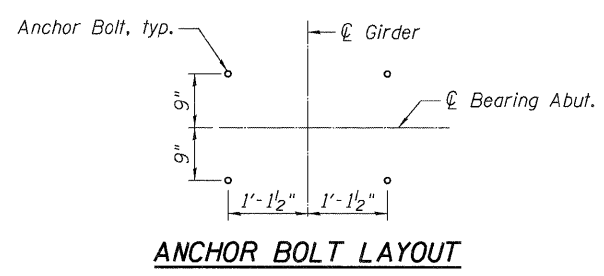


BEARING SEAT ELEVATIONS

Girder	Elevations
1W	435.34
2W	434.83
3W	434.31
4W	433.80
5W	433.28
6W	432.77
1E	433.17
2E	432.69
3E	432.21
4E	431.74
5E	431.26



- NOTES:**
1. Work this sheet with Shts. S-76, S-77 & S-78.
 2. Hatched area of abutment backwall to be poured after superstructure forms have been removed. Quantity of concrete included with Concrete Superstructure on Sht. S-46.
 3. For MSE Wall plans, see Shts. W-1, W-2 & W-3.
 4. For Anchor Bolt and Bearing details, see Sht. S-73.

FILE NAME = \PFS\0244\VA\VAULT.D\TRANS\87\2282\28668-021\STRUCT\CAD\01 DESIGN\0820318\0820318-CONN-05-001-SHT-AB.DGN
 USER NAME = #USER#
 DESIGNED - KK
 DRAWN - KK
 CHECKED - TCU
 DATE - 06/04/10
 REVISIONS:
 REVISED -
 REVISED -
 REVISED -
 REVISED -
 REVISED -
 STATE OF ILLINOIS
 DEPARTMENT OF TRANSPORTATION
 I-70 CONNECTION OVER
 NS, TRRA, MCT AND INDUSTRIAL DR.
 EAST ABUTMENT PLAN
 SCALE:
 SHEET NO. S-75 OF S-111
 STA. 134+22.00 TO STA.
 F.A.P. RTE. 998
 SECTION 82-2-1HVB
 COUNTY ST. CLAIR
 TOTAL SHEETS 285
 SHEET NO. 185
 SN 082-0318 (EB) & 0319 (WB)
 CONTRACT NO. 76C44
 FED. ROAD DIST. NO. ILLINOIS FED. AID PROJECT

TENG TENG & ASSOCIATES, INC.
 ENGINEERS/ARCHITECTS/PLANNERS
 CHICAGO, ILLINOIS