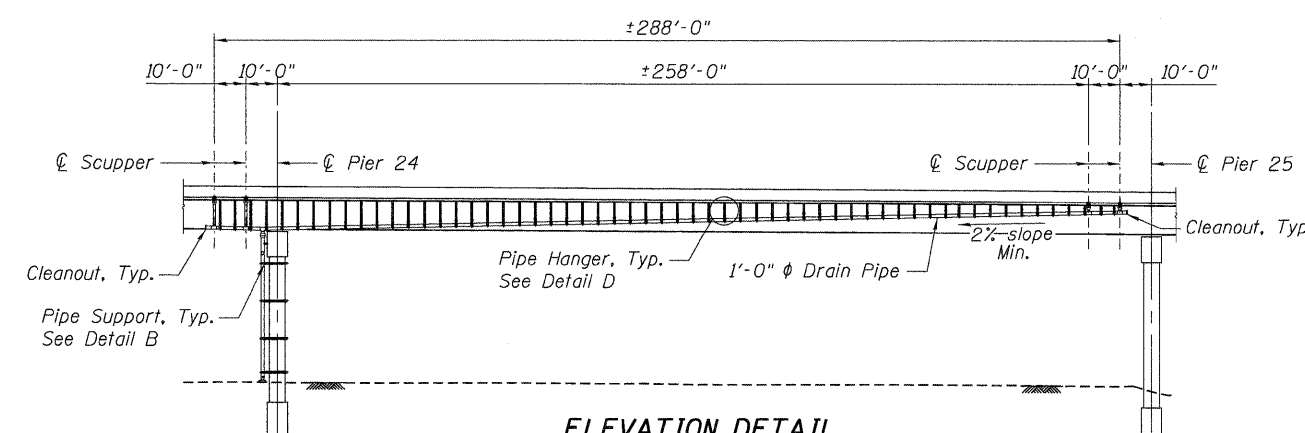


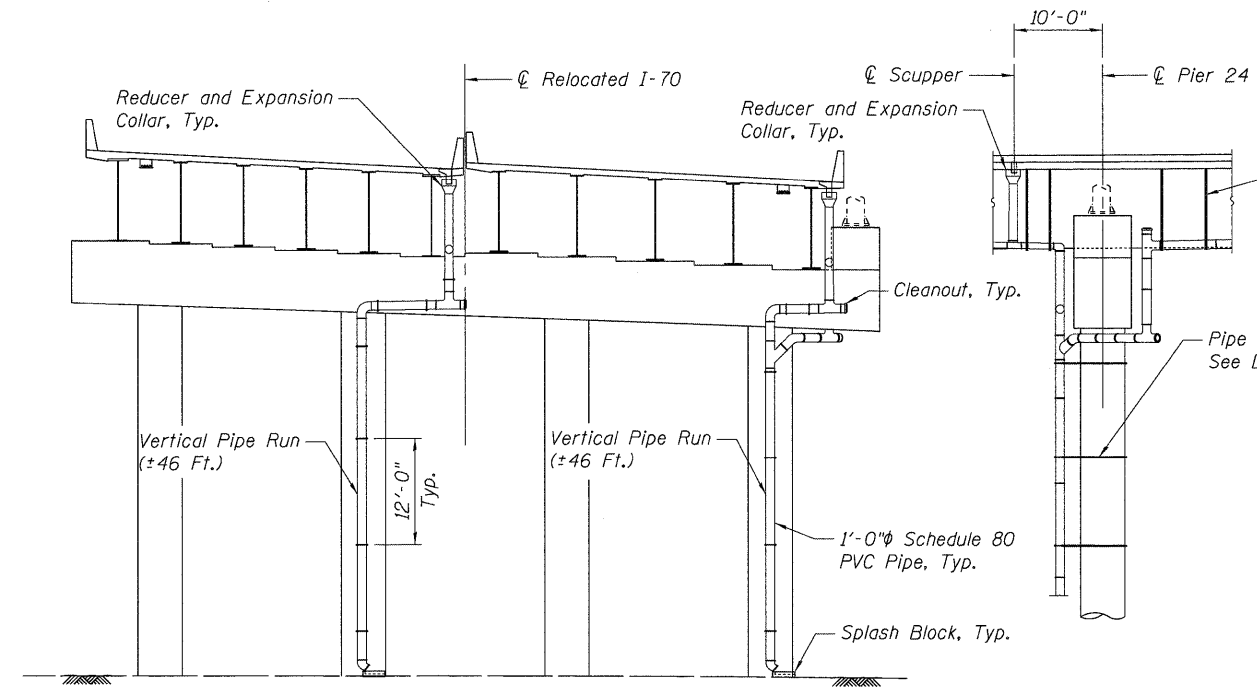
PLAN



ELEVATION DETAIL
(Looking North, WB Pipe Run shown)

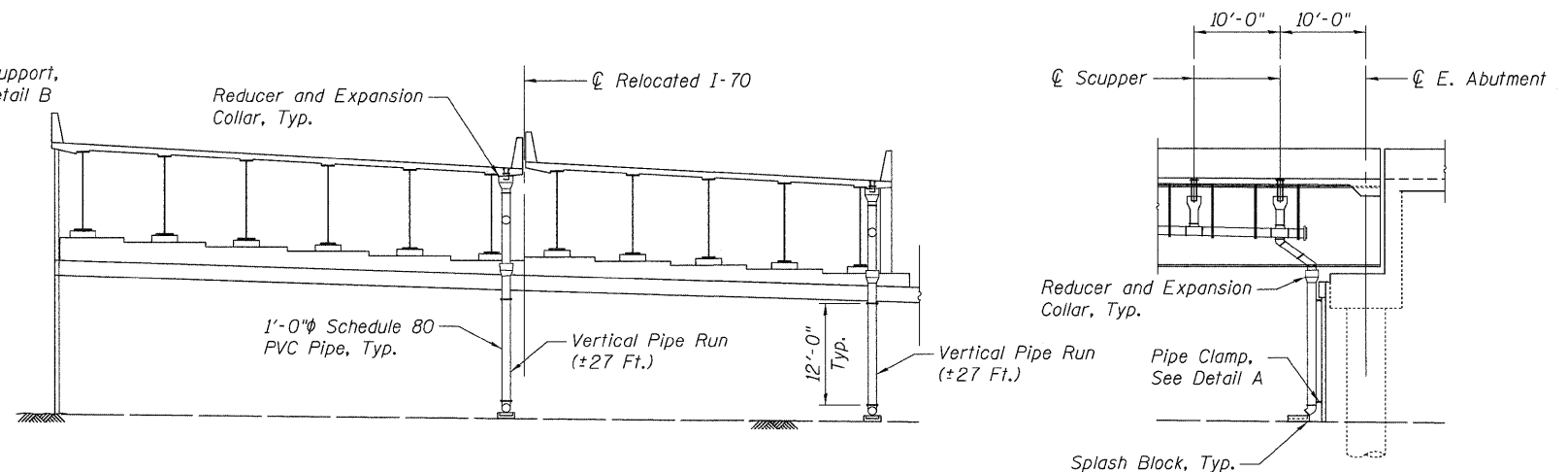
NOTES:

1. Work this sheet with Sheet S-91.
2. Pipe hangers shall be provided on all horizontal collector pipes at each tee, elbow, or change in direction and at intermediate points as recommended by pipe manufacturer. Collector pipe hangers shall have a load capacity of not less than 2000 lbs. and shall be designed so as not to apply excessive compressive stress to the pipe. Pipe supports shall be provided on all vertical drain pipes at points not more than 12'-0" on centers.



ELEVATION - PIER 24
(Looking East)

END VIEW - PIER 24
(Looking North)



ELEVATION - EAST ABUTMENT
(Looking East)

END VIEW - EAST ABUTMENT
(Looking North)

0820318-CONN-99-001-001-DNDON... 0820318-CONN-05-001-DNDON... 0820318-CONN-05-001-DNDON... 0820318-CONN-05-001-DNDON...
 0820318-CONN-99-001-001-DNDON... 0820318-CONN-05-001-DNDON... 0820318-CONN-05-001-DNDON... 0820318-CONN-05-001-DNDON...
 0820318-CONN-99-001-001-DNDON... 0820318-CONN-05-001-DNDON... 0820318-CONN-05-001-DNDON... 0820318-CONN-05-001-DNDON...

FILE NAME =	USER NAME = #USER#	DESIGNED - TKL	REVISED -	STATE OF ILLINOIS DEPARTMENT OF TRANSPORTATION I-70 CONNECTION OVER NS, TRRA, MCT AND INDUSTRIAL DR.	BRIDGE DRAINAGE SYSTEM			F.A.P. RTE.	SECTION	COUNTY	TOTAL SHEETS	SHEET NO.
#FILE#		DRAWN - CPB	REVISED -		998	82-2-1HVB	ST. CLAIR	285	200			
PLOT SCALE = #SCALE#		CHECKED - TCU	REVISED -		SN 082-0318 (EB) & 0319 (WB)				CONTRACT NO. 76C44			
PLOT DATE = #DATE#		DATE - 06/04/10	REVISED -		FED. ROAD DIST. NO. ILLINOIS FED. AID PROJECT							