

STATE OF ILLINOIS
DEPARTMENT OF TRANSPORTATION
DIVISION OF HIGHWAYS

**PROPOSED
HIGHWAY PLANS**

FAP ROUTE 329 (IL 154)
SECTION 20RS-4(20-2,19)RS-3
PROJECT: *ACF-ACHSIP-0329(013)*
RESURFACING, GUTTER REPLACEMENT, AND SAFETY SHOULDERS
RANDOLPH COUNTY

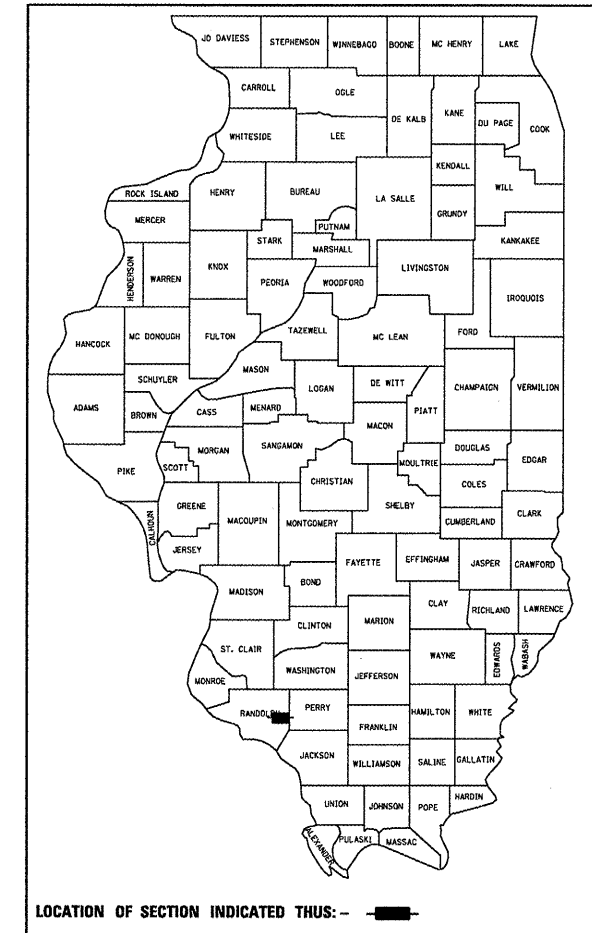
C-98-014-10

F.A.P. RTE.	SECTION	COUNTY	TOTAL SHEETS	SHEET NO.
329	20RS-4(20-2,19)RS-3	RANDOLPH	19	1
		ILLINOIS	CONTRACT NO. 76D36	

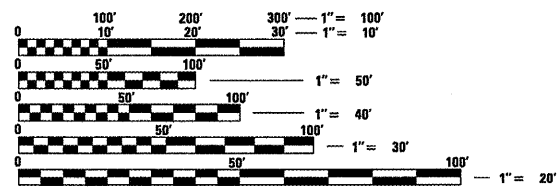
* 19+3 = 22

D-98-014-10

FOR INDEX OF SHEETS, SEE SHEET NO. 2

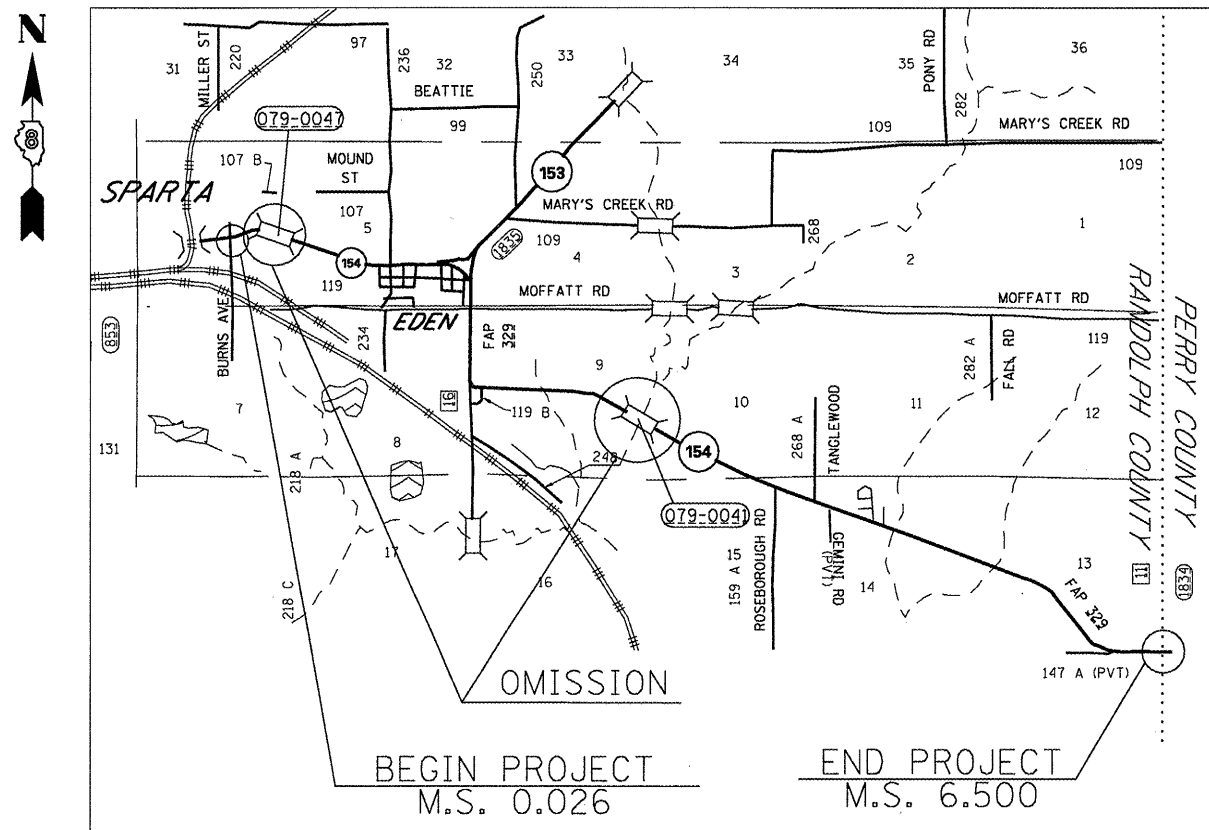


LOCATION OF SECTION INDICATED THUS: - ■ -



FULL SIZE PLANS HAVE BEEN PREPARED USING STANDARD ENGINEERING SCALES. REDUCED SIZED PLANS WILL NOT CONFORM TO STANDARD SCALES. IN MAKING MEASUREMENTS ON REDUCED PLANS, THE ABOVE SCALES MAY BE USED.

J.U.L.I.E.
JOINT UTILITY LOCATION INFORMATION FOR EXCAVATION
1-800-892-0123
OR 811



PROJECT ENGINEER: PATTI LeBEAU (618-346-3179)
PROJECT MANAGER: CHERYL KEPLAR (618-346-3186)

CONTRACT NO. 76D36

TRAFFIC DATA

ADT: 2900 (2010)
3500 (2030)
SU: 5.4%
MU: 6.3%

GROSS LENGTH = 34322.14FT. = 6.500 MILES
OMISSIONS = 881.76 FT. = 0.167 MILES
NET LENGTH = 33440.38 FT. = 6.333 MILES

BEGIN PROJECT LAT: 38.12468 LONG: -89.69063
END PROJECT LAT: 38.08770 LONG: -89.59281

STATE OF ILLINOIS
DEPARTMENT OF TRANSPORTATION
DIVISION OF HIGHWAYS
SUBMITTED *March 18 2010*
Scott G. Stitt
DEPUTY DIRECTOR OF HIGHWAYS, REGION 5 ENGINEER
June 25 2010
Scott G. Stitt P.E.
acting ENGINEER OF DESIGN AND ENVIRONMENT
June 25 2010
Christine M. Reed
DIRECTOR OF HIGHWAYS, CHIEF ENGINEER

PRINTED BY THE AUTHORITY
OF THE STATE OF ILLINOIS