

STATE OF ILLINOIS
DEPARTMENT OF TRANSPORTATION
DIVISION OF HIGHWAYS

**PROPOSED
HIGHWAY PLANS**

FAP ROUTE 329 (IL 154)
SECTION 20RS-4(20-2,19)RS-3
PROJECT: *ACF-ACHSIP-0329(013)*
RESURFACING, GUTTER REPLACEMENT, AND SAFETY SHOULDERS
RANDOLPH COUNTY

C-98-014-10

F.A.P. RTE.	SECTION	COUNTY	TOTAL SHEETS	SHEET NO.
329	20RS-4(20-2,19)RS-3	RANDOLPH	19	1
ILLINOIS		CONTRACT NO. 76D36		

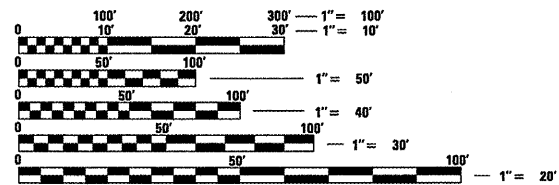
* 19+3 = 22

D-98-014-10

FOR INDEX OF SHEETS, SEE SHEET NO. 2

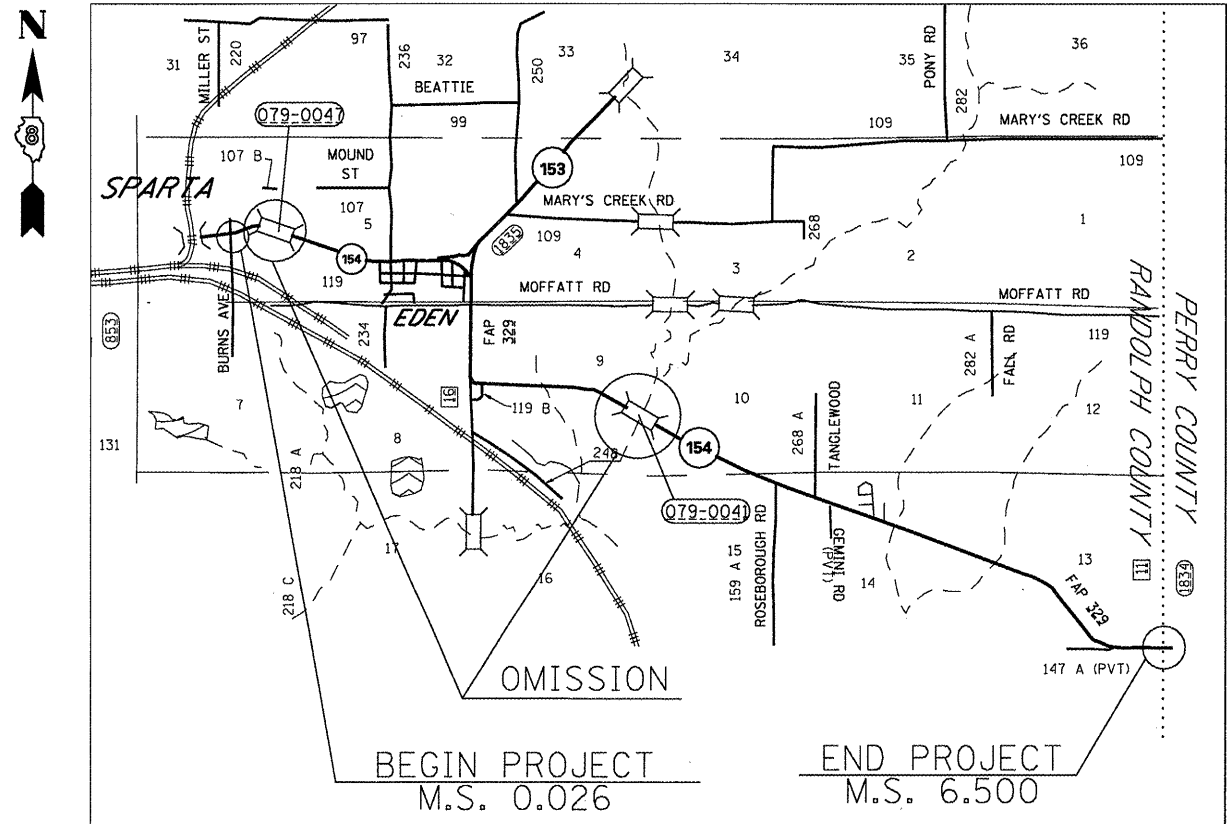


LOCATION OF SECTION INDICATED THUS: —■—



FULL SIZE PLANS HAVE BEEN PREPARED USING STANDARD ENGINEERING SCALES. REDUCED SIZED PLANS WILL NOT CONFORM TO STANDARD SCALES. IN MAKING MEASUREMENTS ON REDUCED PLANS, THE ABOVE SCALES MAY BE USED.

J.U.L.I.E.
JOINT UTILITY LOCATION INFORMATION FOR EXCAVATION
1-800-892-0123
OR 811



PROJECT ENGINEER: PATTI LeBEAU (618-346-3179)
PROJECT MANAGER: CHERYL KEPLAR (618-346-3186)

CONTRACT NO. 76D36

TRAFFIC DATA

ADT: 2900 (2010)
3500 (2030)
SU: 5.4%
MU: 6.3%

GROSS LENGTH = 34322.14FT. = 6.500 MILES
OMISSIONS = 881.76 FT. = 0.167 MILES
NET LENGTH = 33440.38 FT. = 6.333 MILES

BEGIN PROJECT LAT: 38.12468 LONG: -89.69063
END PROJECT LAT: 38.08770 LONG: -89.59281

STATE OF ILLINOIS
DEPARTMENT OF TRANSPORTATION
DIVISION OF HIGHWAYS
SUBMITTED *March 18 2010*
Scott G. Stitt
DEPUTY DIRECTOR OF HIGHWAYS, REGION 5 ENGINEER
June 25 2010
Scott G. Stitt, P.E.
acting ENGINEER OF DESIGN AND ENVIRONMENT
June 25 2010
Christine M. Reed
DIRECTOR OF HIGHWAYS, CHIEF ENGINEER

**PRINTED BY THE AUTHORITY
OF THE STATE OF ILLINOIS**

INDEX OF SHEETS

- 1 COVER SHEET
- 2 INDEX OF SHEETS, HIGHWAY STANDARDS, GENERAL NOTES, COMMITMENTS
- 3 SUMMARY OF QUANTITIES
- 4-9 SCHEDULES OF QUANTITIES
- 10-12 TYPICAL SECTIONS
- 13-17 LOCATION MAPS
- 18-19 DETAILS

HIGHWAY STANDARDS

- 406201-01
- 442201-03
- 482001-02
- 606101-04
- 630001-08
- 630301-05
- 635006-03
- 642001-01
- 701201-03
- 701301-03
- 701306-02
- 701311-03
- 701326-03
- 701336-05
- 701501-05
- 701901-01
- 780001-02
- 781001-03

GENERAL NOTES

1. THE STANDARDS AND REVISION NUMBERS LISTED SHALL APPLY TO THIS PROJECT.
2. IF ANY SECTION OR SUB-SECTION MONUMENTS ARE ENCOUNTERED, THE ENGINEER SHALL BE NOTIFIED BEFORE SUCH MONUMENTS ARE REMOVED OR RESURFACED OVER. THE CONTRACTOR SHALL PROTECT AND CAREFULLY PRESERVE ALL PROPERTY MARKERS AND MONUMENTS UNTIL THE OWNER, AN AUTHORIZED SURVEYOR, OR AGENT HAS WITNESSED OR OTHERWISE REFERENCED THEIR LOCATION.
3. ILLINOIS STATE LAW REQUIRES A 48-HOUR NOTICE TO BE GIVEN TO UTILITIES BEFORE DIGGING. FIELD MARKING OF FACILITIES MAY BE OBTAINED BY CONTACTING J.U.L.I.E. OR FOR NON-MEMBERS, THE UTILITY COMPANY DIRECTLY. AGENCIES KNOWN TO HAVE FACILITIES WITHIN THE PROJECT AREA ARE AS FOLLOWS:

	ABOVE GROUND	BELOW GROUND
•AMERENIP	X	X
•EGYPTIAN ELECTRIC COOPERATIVE ASSOCIATION	X	X
•EXXONMOBIL PIPELINE COMPANY		X
•CITY OF SPARTA		X
•VERIZON NORTH, INC.	X	X
•WASHINGTON COUNTY WATER CO.		X

MEMBERS OF J.U.L.I.E. (800)-892-0123 ARE INDICATED BY *. NON J.U.L.I.E. MEMBERS MUST BE NOTIFIED INDIVIDUALLY.

4. THE CONTRACTOR SHALL BE AWARE THAT THERE ARE MANHOLES & VALVES LOCATED WITHIN THE RESURFACING LIMITS. CARE SHALL BE TAKEN IN THESE LOCATIONS DURING MILLING OPERATIONS.
5. THE THICKNESS OF THE BITUMINOUS MIXTURE SHOWN ON THE PLANS IS THE NOMINAL THICKNESS. DEVIATIONS FROM THE NOMINAL THICKNESS WILL BE PERMITTED WHEN SUCH DEVIATIONS OCCUR DUE TO IRREGULARITIES IN THE EXISTING SURFACE OR BASE ON WHICH THE BITUMINOUS MIXTURE IS PLACED.

6. THE FOLLOWING MIXTURE REQUIREMENTS ARE APPLICABLE FOR THIS PROJECT:

ROUTE	FAP 329 (IL 154)			
SECTION	20RS-4			
COUNTY	RANDOLPH			
CONTRACT	76036			
DESCRIPTION:	3P IL-154 FROM BURNES AVE. IN SPARTA TO PERRY COUNTY LINE.			
ADT (Constructio	6000			
MU%:	4.6			
SUZ:	4.4			
20 YR. ESAL'S:	1.84			
MIXTURE USE	SURFACE	LEVELING BINDER	BINDER/PATCHING	SHOULDERS
AC/PG	PG 64-22	PG 64-22	PG 64-22	PG 64-22
RAP % (MAX)	10%	SEE SPEC.	15%	30%
DESIGN AIR VOIDS	4.0% @ Ndens=70	4.0% @ Ndens=70	4.0% @ Ndens=70	2.0% @ Ndens=30
MIX COMPOSITION				
GRADATION MIXTURE		IL 9.5	IL 19.0	
FRICITION AGG.	MIXTURE "D"	MIXTURE "C"	MIXTURE "B"	BAM

•• Top Lift Shoulders - Design this mix at 2.0% voids and add asphalt to reduce voids to 1.5%.
Plan quantities for Bituminous Concrete Surface Course Items are calculated using a unit weight of 112 lb/sq yd/in (59.8 kg/sq m/25 mm thickness).

7. ANY EARTHWORK ASSOCIATED WITH REMOVAL OR PLACEMENT OF THE GUTTER AND CURB & GUTTER SHALL BE INCLUDED IN THE COST FOR THE GUTTER AND COMBINATION CONCRETE CURB & GUTTER.
8. ANY EARTHWORK REQUIRED FOR HMA WIDENING SHALL BE INCLUDED IN THE COST OF THE HMA WIDENING.
9. STRAW BALES, HAY BALES, PERIMETER EROSION BARRIER, AND SILT FENCES WILL NOT BE PERMITTED FOR TEMPORARY OR PERMANENT DITCH CHECKS. DITCH CHECKS SHALL BE COMPOSED OF AGGREGATE, SILT PANELS, ROLLED EXCELSIOR, SILT WEDGES, OR ANY OTHER MATERIAL APPROVED BY THE ENGINEER.
10. ALL AREAS DISTURBED FOR ANY REASON SHALL BE SEEDED WITH CLASS 1, 2, OR 3 SEEDING AS DIRECTED BY THE ENGINEER. NUTRIENTS SHALL CONFORM TO ARTICLE 250.04.
11. EXISTING TREES THAT ARE NOT SHOWN ON THE PLANS AS TO BE REMOVED SHALL REMAIN UNDAAMAGED.
12. SAW CUTTING ON ALL EDGES FOR REMOVAL ITEMS SHALL BE INCLUDED IN THE COST OF THE REMOVAL ITEM AS INDICATED AND IN ACCORDANCE WITH SECTION 440 OF THE STANDARD SPECIFICATIONS.
13. THE CONTRACTOR AND THE ENGINEER SHALL BE AWARE THAT NO SURVEY WAS PERFORMED FOR THIS PROJECT. THE STATIONING AND TOPO SHOWN IN THE PLANS WAS CREATED USING MICROFILM AND FIELD MEASUREMENTS MADE BY DESIGN PERSONNEL. BOTH SHALL BE ASSUMED TO BE APPROXIMATE.
14. THE CONTRACTOR SHALL VERIFY ALL DIMENSIONS AND CONDITIONS IN THE FIELD PRIOR TO CONSTRUCTION AND ORDERING OF MATERIALS.
15. NO OVERNIGHT LANE CLOSURES WILL BE ALLOWED.
16. ROAD CONSTRUCTION AHEAD SIGNS SHALL BE PLACED AT THE BEGINNING AND END OF THE PROJECT PLUS THE INTERSECTING SIDE ROADS, AND WILL BE INCLUDED IN THE TRAFFIC CONTROL PAY ITEMS. ALL CONSTRUCTION SIGNS SHALL BE (48X48) FLUORESCENT ORANGE.
17. FLAGMEN SHALL BE PRESENT DURING ALL CLOSURE HOURS, INCLUDING LUNCH HOUR, AND NO ADDITIONAL COMPENSATION SHALL BE APPLIED.
18. EXCAVATION ADJACENT TO EDGE OF PAVEMENT SHALL BE PROTECTED WITH EXTENDED LEG BARRICADES WITH STEADY BURN LIGHTS
19. SHORT-TERM PAVEMENT MARKING SHALL BE APPLIED TO THE MILLED, PRIMED, AND FINAL BITUMINOUS SURFACE. A QUANTITY FOR TEMPORARY PAVEMENT MARKING EQUAL TO THE AMOUNT OF PERMANENT PAVEMENT MARKING HAS BEEN ADDED TO THE PLANS.
20. ALL TEMPORARY PAVEMENT MARKINGS WILL BE PLACED IN SUCH A MANNER SO AS NOT TO INTERFERE WITH THE PLACEMENT OF PERMANENT PAVEMENT MARKINGS.
21. THE REPLACEMENT OF PIPE CULVERTS AT SIDEROADS SHALL BE COMPLETED UNDER TRAFFIC, ONE HALF AT A TIME, AS DIRECTED BY THE ENGINEER, AND THE COST IS TO BE INCLUDED UNDER TRAFFIC CONTROL.
22. RIPRAP AND FILTER FABRIC SHALL BE PLACED TO MATCH THE EXISTING SLOPES TO COMPLETE THIS TO THE SATISFACTION OF THE ENGINEER.

COMMITMENTS

•ENVIRONMENTAL: ANY SOIL EXCAVATED IS TO REMAIN ON SITE.

FILE NAME #	USER NAME # #USER#	DESIGNED -	REVISED -	STATE OF ILLINOIS DEPARTMENT OF TRANSPORTATION	GENERAL NOTES	F.A.P. RTE.	SECTION	COUNTY	TOTAL SHEETS	SHEET NO.	
#FILE#	PLOT SCALE # #SCALE#	DRAWN -	REVISED -			329	20RS-4(20-2,19)RS-3	RANDOLPH	19	2	
	PLOT DATE # #DATE#	CHECKED -	REVISED -			CONTRACT NO. 76036					
		DATE -	REVISED -			SCALE:	SHEET NO. OF SHEETS	STA.	TO STA.	FED. ROAD DIST. NO.	ILLINOIS FED. AID PROJECT

SUMMARY OF QUANTITIES

SUMMARY OF QUANTITIES				CONSTRUCTION TYPE CODE		SUMMARY OF QUANTITIES				CONSTRUCTION TYPE CODE	
CODE NO	ITEM	UNIT	TOTAL QUANTITIES	STP	HSIP	CODE NO	ITEM	UNIT	TOTAL QUANTITIES	STP	HSIP
				1000 80% FED 20% STATE	SFTY-2A 90% FED 10% STATE					1000 80% FED 20% STATE	SFTY-2A 90% FED 10% STATE
20200100	EARTH EXCAVATION	CU YD	515	369	146	54001012	BOX CULVERT END SECTION, CULVERT NO.12	EACH	2	2	
28100105	STONE RIPRAP, CLASS A3	SQ YD	1471	1471		54213459	END SECTIONS 24"	EACH	4	4	
35600724	HOT-MIX ASPHALT BASE COURSE WIDENING, 12"	SQ YD	1852	1852		54213465	END SECTIONS 30"	EACH	2	2	
40600200	BITUMINOUS MATERIALS (PRIME COAT)	TON	59.9	59.9		542A5479	PIPE CULVERTS, CLASS A, TYPE 1 EQUIVALENT ROUND-SIZE 24"	FOOT	73	73	
40600300	AGGREGATE (PRIME COAT)	TON	287	287		542A5485	PIPE CULVERTS, CLASS A, TYPE 1 EQUIVALENT ROUND-SIZE 30"	FOOT	65	65	
40600635	LEVELING BINDER (MACHINE METHOD), N70	TON	4018	4018		542C0220	PIPE CULVERTS, CLASS C, TYPE 1 15"	FOOT	154	154	
40600982	HOT-MIX ASPHALT SURFACE REMOVAL - BUTT JOINT	SQ YD	1123	1123		60600095	CLASS SI CONCRETE (OUTLET)	CU YD	30.1	30.1	
40600990	TEMPORARY RAMP	SQ YD	732	732		60602500	CONCRETE GUTTER, TYPE A	FOOT	5555.0	5555.0	
40603340	HOT-MIX ASPHALT SURFACE COURSE, MIX "D", N70	TON	8051	8051		*63000003	STEEL PLATE BEAM GUARD RAIL, TYPE A, 9 FOOT POSTS	FOOT	1650	1650	
40800050	INCIDENTAL HOT-MIX ASPHALT SURFACING	TON	92	92		*63100167	TRAFFIC BARRIER TERMINAL, TYPE 1 (SPECIAL) TANGENT	EACH	10	10	
44000153	HOT-MIX ASPHALT SURFACE REMOVAL, 1"	SQ YD	95356	95356		63200310	GUARDRAIL REMOVAL	FOOT	708.5	708.5	
44000400	GUTTER REMOVAL	FOOT	5555	5555		64200105	SHOULDER RUMBLE STRIP	FOOT	1977		1977
44200120	PAVEMENT PATCHING, TYPE II, 10 INCH	SQ YD	106	106		67000400	ENGINEER'S FIELD OFFICE, TYPE A	CAL MO	3	3	
44200124	PAVEMENT PATCHING, TYPE III, 10 INCH	SQ YD	58	58		67100100	MOBILIZATION	L SUM	1	1	
44200126	PAVEMENT PATCHING, TYPE IV, 10 INCH	SQ YD	2134	2134		70100450	TRAFFIC CONTROL AND PROTECTION, STANDARD 701201	L SUM	1	1	
44200156	PAVEMENT PATCHING, TYPE II, 13 INCH	SQ YD	423	423		70100460	TRAFFIC CONTROL AND PROTECTION, STANDARD 701306	L SUM	1	1	
44200160	PAVEMENT PATCHING, TYPE III, 13 INCH	SQ YD	278	278		70100500	TRAFFIC CONTROL AND PROTECTION, STANDARD 701326	L SUM	1	1	
44200162	PAVEMENT PATCHING, TYPE IV, 13 INCH	SQ YD	2768	2768		70100600	TRAFFIC CONTROL AND PROTECTION, STANDARD 701336	L SUM	1	1	
44300200	STRIP REFLECTIVE CRACK CONTROL TREATMENT	FOOT	66602	66602		70102620	TRAFFIC CONTROL AND PROTECTION, STANDARD 701501	L SUM	1	1	
48102100	AGGREGATE WEDGE SHOULDER, TYPE B	TON	2617	2617		70300100	SHORT-TERM PAVEMENT MARKING	FOOT	9323	9323	
48203029	HOT-MIX ASPHALT SHOULDERS, 8"	SQ YD	848	189	659	70300220	TEMPORARY PAVEMENT MARKING - LINE 4"	FOOT	105975	105975	
50105220	PIPE CULVERT REMOVAL	FOOT	270	270		70301000	WORK ZONE PAVEMENT MARKING REMOVAL	SQ FT	1040	1040	
54001001	BOX CULVERT END SECTION, CULVERT NO. 1	EACH	2	2		*78000200	THERMOPLASTIC PAVEMENT MARKING - LINE 4"	FOOT	105975	105975	
54001002	BOX CULVERT END SECTION, CULVERT NO. 2	EACH	2	2		*78100100	RAISED REFLECTIVE PAVEMENT MARKER	EACH	427	427	
54001003	BOX CULVERT END SECTION, CULVERT NO. 3	EACH	2	2		*78200410	GUARDRAIL MARKERS, TYPE A	EACH	19	19	
54001004	BOX CULVERT END SECTION, CULVERT NO. 4	EACH	2	2		*78201000	TERMINAL MARKER - DIRECT APPLIED	EACH	10	10	
54001005	BOX CULVERT END SECTION, CULVERT NO. 5	EACH	2	2		78300200	RAISED REFLECTIVE PAVEMENT MARKER REMOVAL	EACH	427	427	
54001006	BOX CULVERT END SECTION, CULVERT NO. 6	EACH	2	2							
54001007	BOX CULVERT END SECTION, CULVERT NO. 7	EACH	2	2							
54001008	BOX CULVERT END SECTION, CULVERT NO. 8	EACH	1	1							
54001009	BOX CULVERT END SECTION, CULVERT NO. 9	EACH	2	2							
54001010	BOX CULVERT END SECTION, CULVERT NO. 10	EACH	2	2							
54001011	BOX CULVERT END SECTION, CULVERT NO. 11	EACH	2	2							

~~70100600 TRAFFIC CONTROL AND PROTECTION, L SUM~~
~~STANDARD 701336~~
 @Z0076600 TRAINEEES HOUR 1000 1000

@Y080 *Specialty Items Rev.

FILE NAME =	USER NAME = #USER#	DESIGNED -	REVISED -	STATE OF ILLINOIS DEPARTMENT OF TRANSPORTATION	SUMMARY OF QUANTITIES	F.A. RTE.	SECTION	COUNTY	TOTAL SHEETS	SHEET NO.	
#FILE#		DRAWN -	REVISED -			329	20RS-4(20-2,19)RS-3	RANDOLPH	19	3	
		CHECKED -	REVISED -			CONTRACT NO. 76D36					
		PLOT SCALE = #SCALE#	REVISED -			FED. ROAD DIST. NO. ILLINOIS FED. AID PROJECT					
		PLOT DATE = #DATE#	DATE -	SCALE:	SHEET NO. OF SHEETS	STA.	TO STA.				

RESURFACING SCHEDULE

LOCATION			HMA SURFACE REMOVAL, 1"	BITUMINOUS MATERIALS (PRIME COAT)	AGGREGATE (PRIME COAT)	LEVELING BINDER, N70, 3.25"	H.M.A. SURFACE COURSE MIX D, 1.5"	STRIP REFLECTIVE CRACK CONTROL TREATMENT	AGGREGATE WEDGE SHOULDER, TYPE B, 3' WIDE
M.S.	TO	M.S.	SQ YD	TON	TON	TON	TON	FOOT	TON
0.026	0.072		647.68	0.41	1.94	27.20	60.47	485.76	
0.072	0.149		1174.51	0.74	3.52	49.33	99.16	813.12	35.57
0.149	0.276	BRIDGE OMISSION							
0.276	0.456		2428.80	1.59	7.60	106.44	213.36	1900.80	
0.456	0.900		6772.48	4.24	20.32	284.44	568.89	4688.64	205.12
0.900	0.994		1268.37	0.83	3.97	55.59	111.18	992.64	
0.994	1.199		3126.93	1.96	9.38	131.33	262.66	2164.80	94.70
1.199	1.373		2654.08	1.74	8.36	117.07	234.14	1837.44	80.38
1.373	1.532		2145.44	1.40	6.72	94.03	188.05	1679.04	
1.532	1.915		5842.03	3.66	17.53	245.37	490.73	4044.48	176.94
1.915	2.123		3172.69	1.99	9.52	133.25	266.51	2196.48	64.06
2.123	2.670		8343.57	5.22	25.03	350.43	700.86	5776.32	252.70
2.670	2.844		2654.08	1.66	7.96	111.47	222.94	1837.44	80.38
2.844	2.963		1815.15	1.14	5.45	76.24	152.98	1256.64	54.97
2.963	3.003	BRIDGE OMISSION							
3.003	3.284		4286.19	2.68	12.86	180.02	360.55	2967.36	129.81
3.284	3.453		2577.81	1.61	7.73	108.27	216.54	1784.64	78.07
3.453	4.486		15756.69	9.86	47.27	661.78	1323.56	10908.48	477.22
4.486	4.579		1254.88	0.82	3.93	55.00	109.99	982.08	
4.579	5.597		15527.89	9.72	46.58	652.17	1304.34	10750.08	470.29
5.597	5.797		3050.67	1.91	9.15	128.13	256.26	2112.00	92.39
5.797	6.021		3416.75	2.14	10.25	143.50	287.01	2365.44	103.48
6.021	6.270		3798.08	2.38	11.39	159.52	319.04	2629.44	115.03
6.270	6.500		3508.27	2.20	10.52	147.35	301.27	2428.80	106.25
TOTAL			95223.04	59.87	286.99	4017.93	8050.48	66601.92	2617.39

FILE NAME =	USER NAME = #USER#	DESIGNED -	REVISED -	STATE OF ILLINOIS DEPARTMENT OF TRANSPORTATION	SURFACE SCHEDULE	F.A.P. RTE.	SECTION	COUNTY	TOTAL SHEETS	SHEET NO.	
#FILE#		DRAWN -	REVISED -			329	20RS-4(20-2,19)RS-3	RANDOLPH	19	4	
		CHECKED -	REVISED -			CONTRACT NO. 76036					
		DATE	REVISED -			SCALE:	SHEET NO.	OF	SHEETS	STA.	TO STA.

PATCHING SCHEDULE

LOCATION	EASTBOUND LANE									WESTBOUND LANE						
	SIZE		PAVEMENT PATCHING 13"			PAVEMENT PATCHING 10"			SIZE		PAVEMENT PATCHING 13"			PAVEMENT PATCHING 10"		
	LENGTH	WIDTH	TYPE II	TYPE III	TYPE IV	TYPE II	TYPE III	TYPE IV	LENGTH	WIDTH	TYPE II	TYPE III	TYPE IV	TYPE II	TYPE III	TYPE IV
MILE STATION	FOOT	FOOT	SQ YD	SQ YD	SQ YD	SQ YD	SQ YD	SQ YD	FOOT	FOOT	SQ YD	SQ YD	SQ YD	SQ YD	SQ YD	SQ YD
0.274	574	3			191.33				574	3			191.33			
0.383	15	12		20.00					7	12	9.33					
0.384									63	3		21.00				
0.386	67	3		22.33												
0.396									99	5			55.00			
0.398	8	12	10.67													
0.400	39	3	13.00													
0.407	10	12	13.33													
0.409	34	3	11.33													
0.415									24	12			32.00			
0.416	12	12		16.00												
0.418	22	3	7.33													
0.419									14	5	7.78					
0.422	30	12			40.00				30	12			40.00			
0.428	16	3	5.33						16	5	8.89					
0.433	70	5			38.89											
0.435									15	5	8.33					
0.441									6	12.5	8.33					
0.448									6	12.5	8.33					
0.457	8	12.5	11.11													
0.458									6	12.5	8.33					
0.548	8	12.5	11.11						8	12.5	11.11					
0.599	7	12.5	9.72						7	12.5	9.72					
0.608	7	12.5	9.72													
0.637	8	12.5	11.11													
0.773									23	12.5			31.94			
0.788									14	12.5		19.44				
0.899									7	12.5	9.72					
0.900	69	4			30.67											
0.900									382	5			212.22			
0.913	42	12.5			58.33											
0.921	28	4	12.44													
0.926	14	12.5		19.44												
0.929	246	4			109.33											
0.973									94	12.5			130.56			
0.975	12	12.5		16.67												
0.978	36	4		16.00												
1.010	7	13	10.11						7	13	10.11					
1.111	7	13	10.11						7	13	10.11					
1.352	6	13				8.67			6	13			8.67			
1.374	337	4						149.78	241	4						107.11
1.420									10	12			13.33			
1.421									254	5						141.11
1.438	12	12														
1.440	27	4				12.00										
1.445	22	12						29.33								
SUBTOTAL			145.44	110.44	468.56	20.67	16.00	179.11			110.11	40.44	693.06	22.00	0.00	248.22

FILE NAME =	USER NAME = #USER#	DESIGNED -	REVISED -	STATE OF ILLINOIS DEPARTMENT OF TRANSPORTATION	PATCHING SCHEDULE	F.A.P. RTE.	SECTION	COUNTY	TOTAL SHEETS	SHEET NO.	
#FILE#		DRAWN -	REVISED -			329	ZORS-4(20-2,19)RS-3	RANDOLPH	19	5	
	PLOT SCALE = #SCALE#	CHECKED -	REVISED -			CONTRACT NO. 76036					
	PLOT DATE = #DATE#	DATE -	REVISED -			SCALE:	SHEET NO.	OF	SHEETS	STA.	TO STA.

PATCHING SCHEDULE

LOCATION	EASTBOUND LANE								WESTBOUND LANE							
	SIZE		PAVEMENT PATCHING 13"			PAVEMENT PATCHING 10"			SIZE		PAVEMENT PATCHING 13"			PAVEMENT PATCHING 10"		
	LENGTH	WIDTH	TYPE II	TYPE III	TYPE IV	TYPE II	TYPE III	TYPE IV	LENGTH	WIDTH	TYPE II	TYPE III	TYPE IV	TYPE II	TYPE III	TYPE IV
MILE STATION	FOOT	FOOT	SQ YD	SQ YD	SQ YD	SQ YD	SQ YD	SQ YD	FOOT	FOOT	SQ YD	SQ YD	SQ YD	SQ YD	SQ YD	SQ YD
1.449	60	5						33.33								
1.461	7	12					9.33									
1.462	223	5						123.89								
1.470									7	12				9.33		
1.471									176	5						97.78
1.504	7	12					9.33		7	12				9.33		
1.505	141	5						78.33	141	5						78.33
1.832									500	4			222.22			
2.019	600	4						266.67								
2.032									100	4						44.44
2.332									200	4			88.89			
2.382									11	6	7.33					
2.432									12	12		16.00				
2.530	12	6	8.00													
2.532									100	4			44.44			
2.732									150	6						100.00
2.832									150	3						50.00
3.332									12	12					16.00	
3.432									12	12					16.00	
3.462									6	12	8.00					
3.630	12	12		16.00												
3.730	12	6	8.00													
3.732									12	12		16.00				
4.130	12	6	8.00													
4.232									6	12	8.00					
4.432									12	12		16.00				
4.532									600	5			333.33			
4.600	700	3			233.33											
4.832									12	6	8.00					
4.932									12	6	8.00					
5.110	12	6	8.00													
5.130	12	6	8.00													
5.432									50	3		16.67				
5.532									12	6	8.00					
5.625	300	3					100.00									
5.932									500	4			222.22			
6.032									700	4						311.11
6.232									12	6				8.00		
6.244	200	3						66.67								
6.330	12	6	8.00													
SUBTOTAL			194.44	126.44	701.89	39.33	16.00	848.00			157.44	105.11	1604.17	48.67	32.00	929.89
ANTICIPATED FAILURE (20%)			38.89	25.29	140.38	7.87	3.20	169.60			31.49	21.02	320.83	9.73	6.40	185.98
TOTAL			233.33	151.73	842.27	47.20	19.20	1017.60			188.93	126.13	1925.00	58.40	38.40	1115.87

FILE NAME =	USER NAME = #USER*	DESIGNED -	REVISED -	STATE OF ILLINOIS DEPARTMENT OF TRANSPORTATION	PATCHING SCHEDULE				F.A.P. RTE.	SECTION	COUNTY	TOTAL SHEETS	SHEET NO.	
#FILE#		DRAWN -	REVISED -		SCALE:	SHEET NO.	OF SHEETS	STA.	TO STA.	329	20RS-4120-2,19RS-3	RANDOLPH	19	6
		CHECKED -	REVISED -						CONTRACT NO. 76D36					
		DATE -	REVISED -						FED. ROAD DIST. NO. ILLINOIS FED. AID PROJECT					

PAVEMENT MARKING SCHEDULE

LOCATION	THERMOPLASTIC PAVEMENT MARKING - LINE 4"				TEMPORARY PAVEMENT MARKING LINE 4"	RAISED REFLECTIVE PAVEMENT MARKER REMOVAL	RAISED REFLECTIVE PAVEMENT MARKERS
	SOLID WHITE EDGE LINE (EDGE LINES)	SKIP DASH (YELLOW)	NO PASSING ZONE (SOLID YELLOW)	SOLID LINE (YELLOW)			
M.S. TO M.S.	FOOT	FOOT	EB OR WB	FOOT	FOOT	EACH	EACH
0.026 0.143	1235.5		EB/WB	1235.5	2471.0	8	8
0.143 0.241	1034.9	130	WB	517.4	1682.3	6	6
0.241 0.296	580.8		EB/WB	580.8	1161.6	4	4
0.296 0.466	1795.2	220	EB	897.6	2912.8	11	11
0.466 0.656	2006.4		EB/WB	2006.4	4012.8	13	13
0.656 0.865	2207.0	280	WB	1103.5	3590.5	14	14
0.865 1.046	1911.4	240	EB	955.7	3107.1	12	12
1.046 1.369	3410.9		EB/WB	3410.9	6821.8	21	21
1.369 1.588	2312.6	290	WB	1156.3	3758.9	14	14
1.588 1.762	1837.4	230			2067.4	11	11
1.762 1.959	2080.3	260	EB	1040.2	3380.5	13	13
1.959 2.070	1172.2		EB/WB	1172.2	2344.4	7	7
2.070 2.270	2112.0	260	WB	1056.0	3428.0	13	13
2.270 2.514	2576.6	320			2896.6	16	16
2.514 2.732	2302.1	290	EB	1151.0	3743.1	14	14
2.732 2.794	654.7		EB/WB	654.7	1309.4	4	4
2.794 3.028	2471.0	310	WB	1235.5	4016.5	15	15
3.028 3.170	1499.5	190			1689.5	9	9
3.170 3.340	1795.2	220	EB	897.6	2912.8	11	11
3.340 3.368	295.7	40			335.7	2	2
3.368 3.533	1742.4	220	WB	871.2	2833.6	11	11
3.533 3.941	4308.5	540			4848.5	27	27
3.941 4.131	2006.4	250	EB	1003.2	3259.6	13	13
4.131 4.145	147.8	20			167.8	1	1
4.145 4.296	1594.6	200	WB	797.3	2591.9	10	10
4.296 4.345	517.4		EB/WB	517.4	1034.8	3	3
4.345 4.445	1056.0	130	EB	528.0	1714.0	7	7
4.445 4.509	675.8	80			755.8	4	4
4.509 4.615	1119.4	140	WB	559.7	1819.1	7	7
4.615 4.645	316.8		EB/WB	316.8	633.6	2	2
4.645 4.774	1362.2	170	EB	681.1	2213.3	9	9
4.774 4.838	675.8	80			755.8	4	4
4.838 4.973	1425.6	180	WB	712.8	2318.4	9	9
4.973 5.451	5047.7	630			5677.7	32	32
5.451 5.666	2270.4	280	EB	1135.2	3685.6	14	14
5.666 5.741	792.0		EB/WB	792.0	1584.0	5	5
5.741 5.926	1953.6	240	WB	976.8	3170.4	12	12
5.926 6.011	897.6	110			1007.6	6	6
6.011 6.120	1151.0	140	EB	575.5	1866.5	7	7
6.120 6.210	950.4		EB/WB	950.4	1900.8	6	6
6.210 6.409	2101.4	260	WB	1050.7	3412.1	13	13
6.409 6.500	961.0	120			1081.0	6	6
SUBTOTAL	68365.2	7070		30539.4	105974.6	427	427
TOTAL		105974.6			105974.6	427	427

GUARDRAIL SCHEDULE

LOCATION	OFFSET	SPBGR REMOVAL	SPBGR TYPE A	TRAFFIC BARRIER TERMINAL	TERMINAL MARKER DIRECT APPLIED	GUARDRAIL MARKERS, TYPE A
				TYPE 1 SPECIAL		
MILE STATION	RT/LT	FOOT	FOOT	EACH	EACH	EACH
1.979 TO 1.986	RT			1	1	
2.038 TO 2.045	RT			1	1	
4.575 TO 4.584	LT			1	1	
4.575 TO 4.584	RT			1	1	
4.617 TO 4.626	RT			1	1	
4.641 TO 4.650	LT			1	1	
5.200 TO 5.209	RT			1	1	
5.223 TO 5.232	LT			1	1	
5.294 TO 5.303	RT			1	1	
5.317 TO 5.326	LT			1	1	
1.979 TO 2.045	RT	350				
1.986 TO 2.038	RT		275			4
4.575 TO 4.600	LT	84.5				
4.584 TO 4.641	LT		300			5
4.578 TO 4.600	RT	74				
4.584 TO 4.617	RT		175			5
5.253 TO 5.270	RT	95				
5.209 TO 5.294	RT		450			5
5.257 TO 5.276	LT	105				
5.232 TO 5.317	LT		450			5
TOTALS		708.5	1650	10	10	19

FILE NAME =	USER NAME = *USER*	DESIGNED -	REVISED -	STATE OF ILLINOIS DEPARTMENT OF TRANSPORTATION	PAVEMENT MARKING SCHEDULE	F.A.P. RTE.	SECTION	COUNTY	TOTAL SHEETS	SHEET NO.	
*FILE#		DRAWN -	REVISED -			329	20RS-4(20-2,19)RS-3	RANDOLPH	19	7	
	PLOT SCALE = *SCALE*	CHECKED -	REVISED -			CONTRACT NO. 76D36					
	PLOT DATE = *DATE*	DATE -	REVISED -			SCALE:	SHEET NO.	OF	SHEETS	STA.	TO STA.

BUTT JOINT SCHEDULE

LOCATION	OFFSET	HMA SURFACE REMOVAL BUTT JOINT	HMA TEMPORARY RAMP
MILE STATION	RT/LT/CENTER	SQ YD	SQ YD
0.026	CENTER	0.0	9.6
0.100	LT	50.0	30.0
0.149	CENTER	0.0	9.6
0.276	CENTER	0.0	9.6
0.769	RT	15.0	9.0
0.836	RT	41.7	25.0
0.854	LT	50.0	30.0
0.980	RT	23.3	14.0
1.057	RT	18.3	11.0
1.126	RT	33.3	20.0
1.127	LT	41.7	25.0
1.186	LT	175.0	105.0
1.201	RT	25.0	15.0
1.325	LT	112.5	67.5
1.328	RT	54.2	32.5
1.523	RT	33.3	20.0
1.523	LT	25.0	15.0
1.964	RT	129.2	77.5
2.055	RT	75.0	45.0
2.412	LT	29.2	17.5
2.963	CENTER	0.0	9.6
3.003	CENTER	0.0	9.6
3.887	RT	50.0	30.0
4.097	RT	35.0	21.0
4.131	LT	35.0	21.0
4.497	LT	48.3	29.0
4.532	LT	23.3	14.0
6.500	CENTER	0.0	9.6
TOTAL		1123.3	731.8

SIDE ROAD SCHEDULE

LOCATION	OFFSET	ROAD NAME	EXISTING SURFACE	WIDTH	LENGTH	INCIDENTAL BITUMINOUS SURFACING
MILE PT.	RT/LT			FOOT	FOOT	TON
0.100	LT	EAST MAIN STREET	BITUMINOUS	60	7.5	3.5
0.769	RT	CROWN STREET	BITUMINOUS	18	7.5	1.1
0.836	RT	VALLEY STEEL ROAD	BITUMINOUS	50	7.5	2.9
0.854	LT	MICHAEL ROAD	BITUMINOUS	60	7.5	3.5
0.980	RT	PEACHTREE ROAD	BITUMINOUS	28	7.5	1.6
1.057	RT	WASHINGTON STREET	BITUMINOUS	22	7.5	1.3
1.126	RT	VILLAGE ROAD	BITUMINOUS	40	7.5	2.3
1.127	LT	VILLAGE ROAD	BITUMINOUS	50	7.5	2.9
1.186	LT	IL 153	BITUMINOUS	210	7.5	12.3
1.201	RT	FRANCENE STREET	BITUMINOUS	30	7.5	1.8
1.325	LT	IL 153	BITUMINOUS	135	7.5	7.9
1.328	RT	CROWN STREET	BITUMINOUS	65	7.5	3.8
1.523	RT	MOFFAT ROAD	BITUMINOUS	40	7.5	2.3
1.523	LT	MOFFAT ROAD	BITUMINOUS	30	7.5	1.8
1.964	RT	EDEN ROAD	BITUMINOUS	155	7.5	9.0
2.055	RT	EDEN ROAD	BITUMINOUS	90	7.5	5.3
2.412	LT	UNMARKED ROAD	BITUMINOUS	35	7.5	2.0
3.887	RT	ROSEBOROUGH ROAD	BITUMINOUS	60	7.5	3.5
4.097	RT	GEMINI COURT	BITUMINOUS	42	7.5	2.5
4.131	LT	TANGLEWOOD ROAD	BITUMINOUS	42	7.5	2.5
4.497	LT	FLAMINGO ROAD	BITUMINOUS	58	7.5	3.4
4.532	LT	FORREST LANE	BITUMINOUS	28	7.5	1.6
TOTAL						78.8

FILE NAME =
#FILE#

USER NAME = #USER#
DRAWN -
PLOT SCALE = #SCALE#
PLOT DATE = #DATE#

DESIGNED -
DRAWN -
CHECKED -
DATE -

REVISED -
REVISED -
REVISED -
REVISED -

STATE OF ILLINOIS
DEPARTMENT OF TRANSPORTATION

SIDE ROADS AND BUTT JOINT SCHEDULES

SCALE: SHEET NO. OF SHEETS STA. TO STA.

F.A.P. RTE.	SECTION	COUNTY	TOTAL SHEETS	SHEET NO.
329	20RS-4(20-2,19)RS-3	RANDOLPH	19	8
CONTRACT NO. 76036				
FED. ROAD DIST. NO. - ILLINOIS FED. AID PROJECT				

ENTRANCE SCHEDULE

LOCATION	OFFSET	TYPE	EXISTING SURFACE	WIDTH	LENGTH	INCIDENTAL BITUMINOUS SURFACING
MILE STA.	RT/LT			FOOT	FOOT	TON
0.071	RT	COMMERCIAL	BITUMINOUS	75	3	0.9
0.140	LT	COMMERCIAL	BITUMINOUS	50	3	0.6
0.294	LT	PRIVATE	BITUMINOUS	25	3	0.3
0.457	LT	PRIVATE	BITUMINOUS	45	3	0.5
0.473	LT	PRIVATE	BITUMINOUS	20	3	0.2
0.547	LT	COMMERCIAL	BITUMINOUS	45	3	0.5
0.674	LT	COMMERCIAL	BITUMINOUS	70	3	0.8
0.983	LT	PRIVATE	BITUMINOUS	18	3	0.2
1.018	LT	COMMERCIAL	BITUMINOUS	35	3	0.4
1.032	LT	COMMERCIAL	BITUMINOUS	35	3	0.4
1.150	RT	COMMERCIAL	BITUMINOUS	18	3	0.2
1.201	RT	PRIVATE	BITUMINOUS	16	3	0.2
1.303	RT	PRIVATE	BITUMINOUS	25	3	0.3
1.353	LT	COMMERCIAL	BITUMINOUS	30	3	0.4
1.353	RT	PRIVATE	BITUMINOUS	30	3	0.4
1.792	RT	PRIVATE	BITUMINOUS	30	3	0.4
SUBTOTAL						6.7

ENTRANCE SCHEDULE

LOCATION	OFFSET	TYPE	EXISTING SURFACE	WIDTH	LENGTH	INCIDENTAL BITUMINOUS SURFACING
MILE STA.	RT/LT			FOOT	FOOT	TON
1.877	LT	PRIVATE	BITUMINOUS	30	3	0.4
1.906	RT	PRIVATE	BITUMINOUS	20	3	0.2
2.205	LT	COMMERCIAL	BITUMINOUS	45	3	0.5
2.238	RT	PRIVATE	BITUMINOUS	25	3	0.3
2.706	LT	COMMERCIAL	BITUMINOUS	32	3	0.4
2.747	LT	COMMERCIAL	BITUMINOUS	32	3	0.4
2.788	RT	PRIVATE	BITUMINOUS	22	3	0.3
2.872	LT	PRIVATE	BITUMINOUS	28	3	0.3
3.931	LT	PRIVATE	BITUMINOUS	24	3	0.3
4.035	RT	PRIVATE	BITUMINOUS	35	3	0.4
4.234	LT	PRIVATE	BITUMINOUS	18	3	0.2
4.413	LT	PRIVATE	BITUMINOUS	18	3	0.2
4.677	LT	PRIVATE	BITUMINOUS	24	3	0.3
5.074	RT	PRIVATE	BITUMINOUS	30	3	0.4
5.385	LT	PRIVATE	BITUMINOUS	40	3	0.5
6.159	RT	PRIVATE	BITUMINOUS	80	3	0.9
SUBTOTAL						6.4
TOTAL						13.1

GUTTER OUTLET SCHEDULE		
LOCATION	OFFSET	CLASS SI CONCRETE (OUTLET)
M.S.	RT/LT	CU YD
0.276	RT	3.77
0.276	LT	3.77
0.994	RT	3.77
0.994	LT	3.77
1.532	RT	3.77
1.532	LT	3.77
4.579	RT	3.77
4.579	LT	3.77
TOTAL		30.14

GUTTER SCHEDULE					
LOCATION		OFFSET	REMOVAL	CONCRETE GUTTER, TYPE B	
M.S.	TO M.S.	RT/LT	FOOT	FOOT	
0.276	TO 0.456	RT	950.4	950.4	
0.276	TO 0.456	LT	950.4	950.4	
0.900	TO 0.994	RT	496.3	496.3	
0.900	TO 0.994	LT	496.3	496.3	
1.373	TO 1.532	RT	839.5	839.5	
1.373	TO 1.532	LT	839.5	839.5	
4.486	TO 4.579	RT	491.0	491.0	
4.486	TO 4.579	LT	491.0	491.0	
TOTAL			5554.6	5554.6	

WIDENING SCHEDULE				
LOCATION		OFFSET	LENGTH	HMA BASE COURSE WIDENING
M.S.	TO M.S.	RT/LT	FOOT	SQ YD
0.276	TO 0.456	RT	950.4	316.8
0.276	TO 0.456	LT	950.4	316.8
0.900	TO 0.994	RT	496.3	165.4
0.900	TO 0.994	LT	496.3	165.4
1.373	TO 1.532	RT	839.5	279.8
1.373	TO 1.532	LT	839.5	279.8
4.486	TO 4.579	RT	491.0	163.7
4.486	TO 4.579	LT	491.0	163.7
TOTAL			5554.6	1851.5

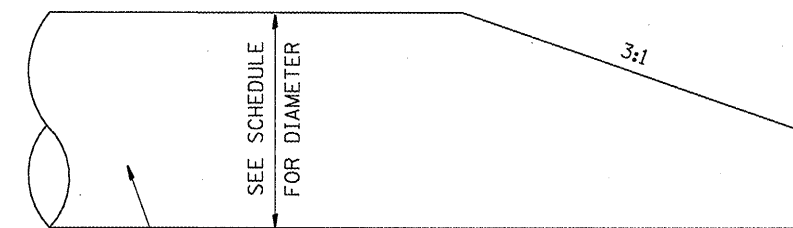
SHOULDERS SCHEDULE					
MILE STATION TO MILE STATION	OFFSET	LENGTH	EARTH EXCAVATION	HMA SHOULDERS, 8"	SHOULDER RUMBLE STRIP
	RT/LT	FOOT	CU YD	SQ YD	FOOT
0.900 TO 0.980	LT	425	42	188.9	0
1.915 TO 1.952	RT	198	14.7	66	198
1.980 TO 2.053	RT	384	28.4	128	384
2.067 TO 2.123	RT	295	21.9	98.3	295
1.915 TO 2.123	LT	1100	81.5	366.7	1100
TOTAL		2402	188.4	847.9	1977.0

STONE RIPRAP SCHEDULE						
LOCATION		OFFSET	LEIGHT	WIDTH	EXCAVATION	STONE RIPRAP, CLASS A3
M.S.	TO M.S.	RT/LT	FEET	FEET	CU YD	SQ YD
0.405	TO 0.435	LT	160	15	59.26	266.67
0.409	TO 0.437	RT	150	20	74.07	333.33
0.919	TO 0.978	RT	310	12	91.85	413.33
0.946	TO 0.982	LT	190	16	75.06	337.78
1.526	TO 1.537	LT	60	6	8.89	40.00
1.526	TO 1.537	LT	60	10	14.81	66.67
1.526	TO 1.537	LT	60	2	2.96	13.33
TOTAL					326.91	1471.11

PIPE CULVERT SCHEDULES

LOCATION		TYPE OF ENTRANCE	PIPE CULVERT REMOVAL	PIPE CULVERTS			END SECTION
				CLASS C	CLASS A		
STATION	OFFSET		FOOT	TYPE 1	TYPE 1	TYPE 1	EACH
				15" CMP	EQUIVALENT ROUND SIZE		
				24"	30"		
0.769	RT	SIDEROAD (CROWN ST)	17		25		2
0.836	RT	SIDEROAD (VALLEY STEEL RD)	48		48		2
0.854	LT	SIDEROAD (MICHAEL RD)	60			65	2
1.018	LT	COMMERCIAL (BITUMINOUS)	25	28			
1.032	LT	COMMERCIAL (BITUMINOUS)	40	40			
1.057	RT	SIDEROAD (WASHINGTON ST)	42	42			
1.150	RT	COMMERCIAL (BITUMINOUS)	18	24			
1.163	RT	PRIVATE (AGGREGATE)	20	20			
TOTAL			270	154	73	73	6

DETAIL OF PIPE CULVERT END SECTION



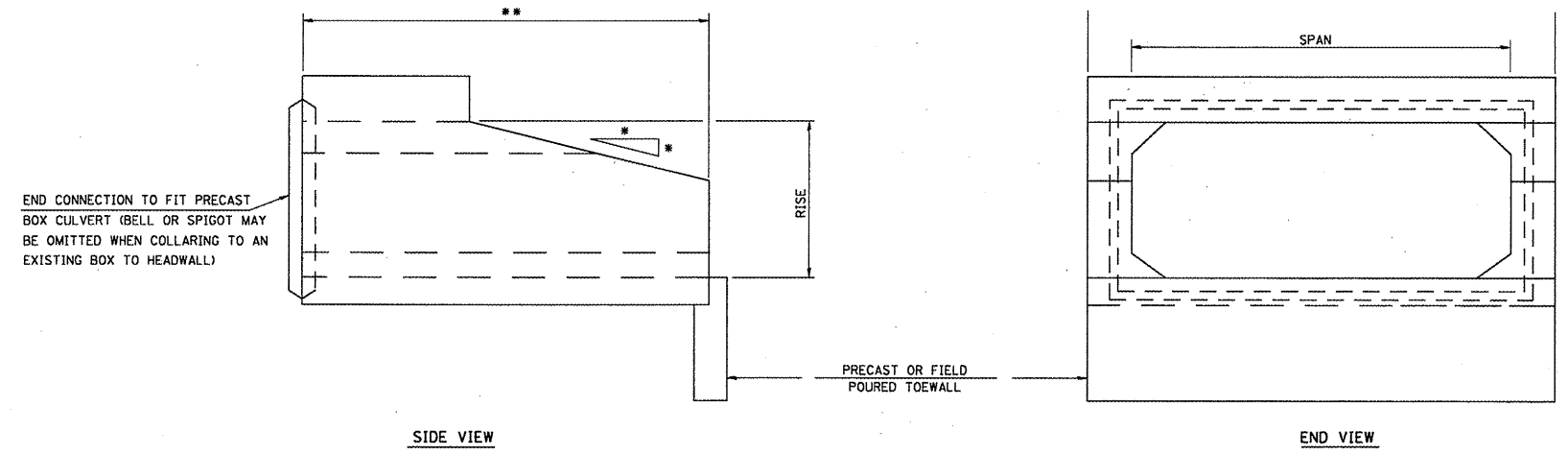
PROPOSED PIPE CULVERT

BEVELED END SECTION

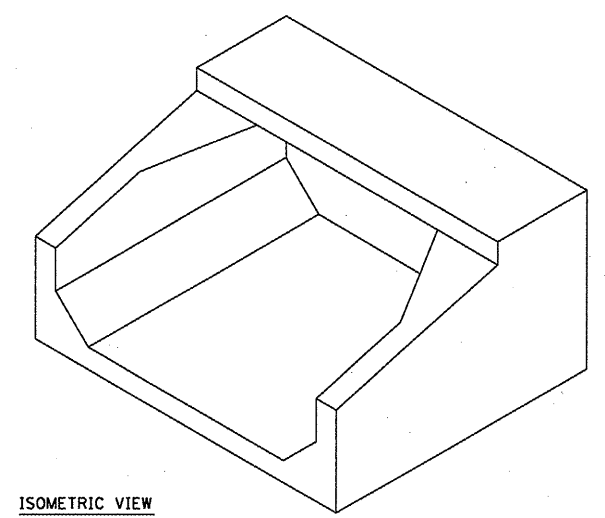
THE BEVELED END PORTION WILL BE PAID FOR AT THE SAME UNIT PRICE PER LINEAL FOOT AS THE PIPE CULVERT

FILE NAME =	USER NAME = #USER#	DESIGNED -	REVISED -	STATE OF ILLINOIS DEPARTMENT OF TRANSPORTATION	PIPE CULVERTS SCHEDULE	F.A.P. RTE.	SECTION	COUNTY	TOTAL SHEETS	SHEET NO.
#FILE#		DRAWN -	REVISED -			329	20RS-4120-2,19RS-3	RANDOLPH	19	98
		CHECKED -	REVISED -			CONTRACT NO. 76036				
		PLOT DATE = #DATE#	DATE -	REVISED -	SCALE:	SHEET NO.	OF	SHEETS	STA.	TO STA.
						FED. ROAD DIST. NO. ILLINOIS FED. AID PROJECT				

DETAIL OF PRECAST CONCRETE BOX CULVERT END SECTION



* NOTE: THE DIMENSIONS OF THE SLOPE SHALL VARY ACCORDING TO THE SIZE OF THE PRECAST BOX CULVERT END SECTIONS AND SHALL BE DESIGNED BY THE PRECASTER TO THE SATISFACTION OF THE ENGINEER.

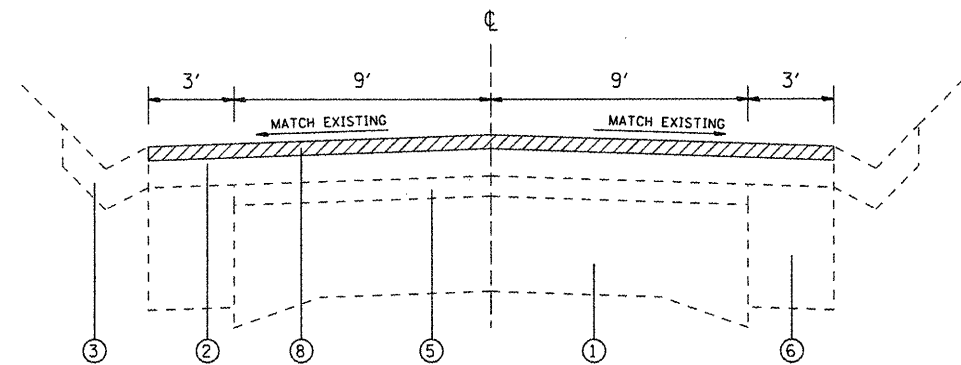


BOX CULVERT END SECTION SCHEDULE

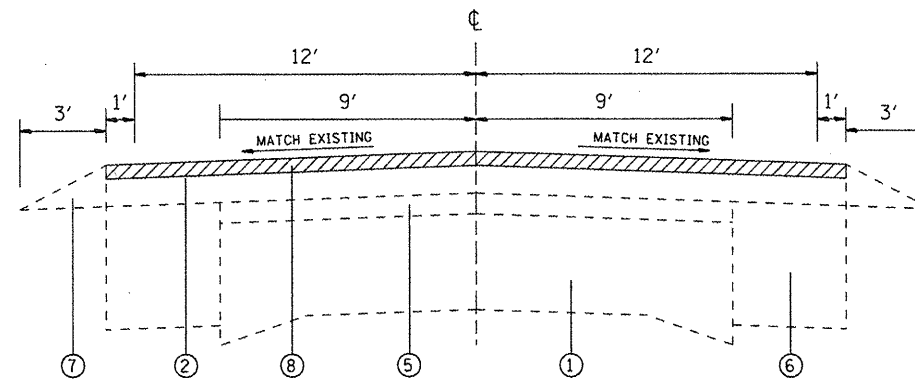
MILE STA.	OFFSET	BOX CULVERT NUMBER	CULVERT SIZE	BOX CULVERT END SECTION	** END SECTION LENGTH
				EACH	FOOT
2.248	RT	No. 1	3' X 3'	1	3
	LT			1	3
2.383	RT	No. 2	4' X 4'	1	3
	LT			1	3
2.540	RT	No. 3	4' X 3'	1	3
	LT			1	3
3.614	RT	No. 4	2' X 2'	1	4
	LT			1	4
3.707	RT	No. 5	2' X 2'	1	4
	LT			1	4
3.788	RT	No. 6	2' X 2'	1	3
	LT			1	4
3.851	RT	No. 7	2' X 2'	1	4
	LT			1	4
4.407	LT	No. 8	2' X 2'	1	4
4.929	RT	No. 9	3' X 2'	1	4
	LT			1	4
5.073	RT	No. 10	3' X 3'	1	4
	LT			1	4
5.443	RT	No. 11	2' X 2'	1	3
	LT			1	4
5.880	RT	No. 12	3' X 2'	1	4
	LT			1	4
TOTAL				23	84

BRIDGE OMISSIONS

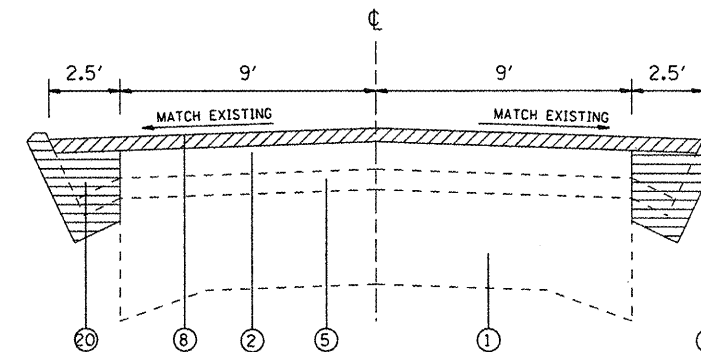
MILE STA. 0.149 TO 0.276
MILE STA. 2.963 TO 3.003



TANGENT SECTION
MILE STA. 0.026 TO 0.072



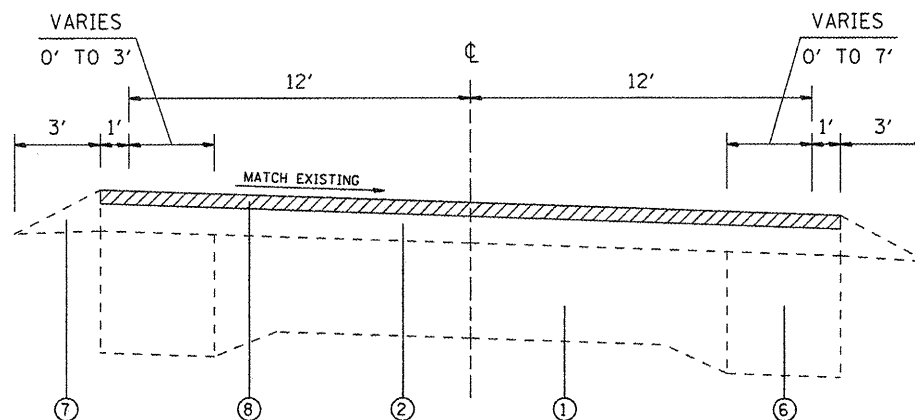
TANGENT SECTION
MILE STA. 0.072 TO 0.149
MILE STA. 0.456 TO 0.900
MILE STA. 0.994 TO 1.199
MILE STA. 1.532 TO 1.915
MILE STA. 2.123 TO 2.670
MILE STA. 2.844 TO 2.963
MILE STA. 3.003 TO 3.284
MILE STA. 3.453 TO 4.486
MILE STA. 4.579 TO 5.597
MILE STA. 5.797 TO 6.021
MILE STA. 6.270 TO 6.500



TANGENT SECTION
MILE STA. 0.276 TO 0.456
MILE STA. 0.900 TO 0.994
MILE STA. 1.373 TO 1.532
MILE STA. 4.486 TO 4.579

LEGEND

- ① EXISTING PAVEMENT 9"-7'-9"
- ② EXISTING HMA RESURFACING 3"
- ③ EXISTING GUTTER, TYPE B
- ④ EXISTING GUTTER (TYPE UNKNOWN)
- ⑤ EXISTING BITUMINOUS RESURFACING (THICKNESS UNKNOWN)
- ⑥ EXISTING BITUMINOUS CONCRETE BASE WIDENING 9"
- ⑦ EXISTING AGGREGATE WEDGE, TYPE B
- ⑧ PROPOSED BITUMINOUS SURFACE REMOVAL 1"
- ⑨ PROPOSED LEVEL BINDER, MACHINE METHOD, 3/4"
- ⑩ PROPOSED HMA SURFACE COURSE, MIX D, 1 1/2"
- ⑪ PROPOSED STRIP REFLECTIVE CRACK CONTROL TREATMENT
- ⑫ PROPOSED PAVEMENT MARKING - LINE 4"
- ⑬ PROPOSED BITUMINOUS MATERIALS PRIME COAT
- ⑭ PROPOSED AGGREGATE PRIME COAT
- ⑮ PROPOSED AGGREGATE WEDGE, TYPE A
- ⑯ PROPOSED HMA SHOULDER, 8"
- ⑰ PROPOSED SHOULDER RUMBLE STRIP
- ⑱ PROPOSED HMA BASE COURSE WIDENING 12"
- ⑲ PROPOSED GUTTER PLACEMENT, TYPE A
- ⑳ PROPOSED GUTTER REMOVAL



TANGENT SECTION
(SUPER-ELEVATION)

MILE STA. 1.199 TO 1.373
MILE STA. 1.915 TO 2.123
MILE STA. 2.670 TO 2.844
MILE STA. 3.284 TO 3.453
MILE STA. 5.597 TO 5.797
MILE STA. 6.021 TO 6.270

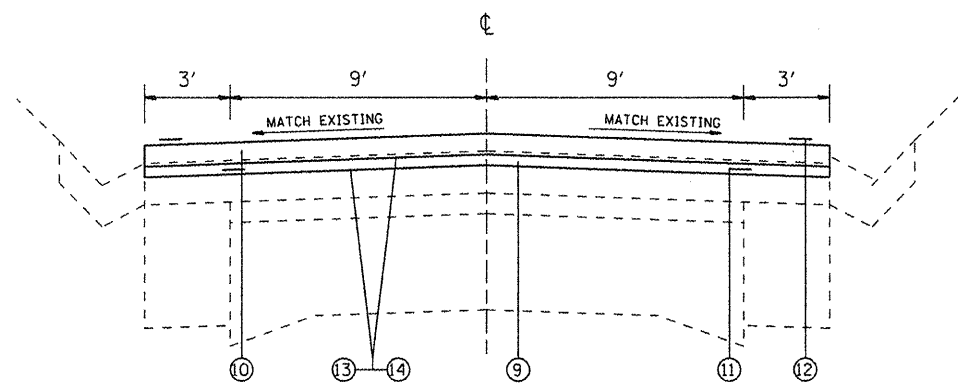
FILE NAME =	USER NAME = *USER*	DESIGNED -	REVISED -
#FILE#		DRAWN -	REVISED -
	PLOT SCALE = #SCALE#	CHECKED -	REVISED -
	PLOT DATE = #DATE#	DATE -	REVISED -

STATE OF ILLINOIS
DEPARTMENT OF TRANSPORTATION

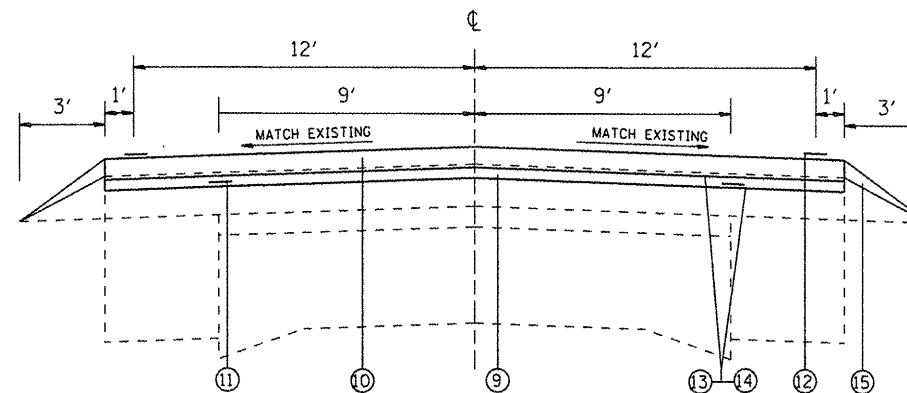
EXISTING TYPICAL SECTIONS

SCALE: SHEET NO. OF SHEETS STA. TO STA.

F.A.P. RTE.	SECTION	COUNTY	TOTAL SHEETS	SHEET NO.
329	20RS-4(20-2.19)RS-3	RANDOLPH	19	10
CONTRACT NO. 76D36				
FED. ROAD DIST. NO. ILLINOIS FED. AID PROJECT				



TANGENT SECTION
MILE STA. 0.026 TO 0.072



TANGENT SECTION

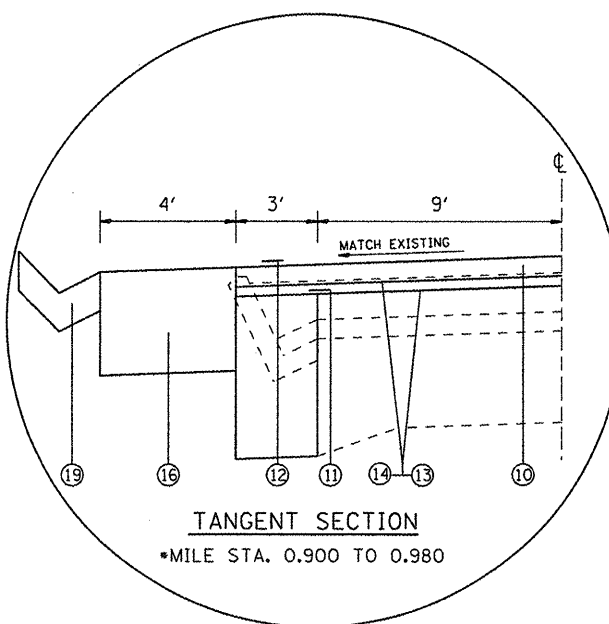
- MILE STA. 0.072 TO 0.149
- MILE STA. 0.456 TO 0.900
- MILE STA. 0.994 TO 1.199
- MILE STA. 1.532 TO 1.915
- MILE STA. 2.123 TO 2.670
- MILE STA. 2.844 TO 2.963
- MILE STA. 3.003 TO 3.284
- MILE STA. 3.453 TO 4.486
- MILE STA. 4.579 TO 5.597
- MILE STA. 5.797 TO 6.021
- MILE STA. 6.270 TO 6.500

BRIDGE OMISSIONS

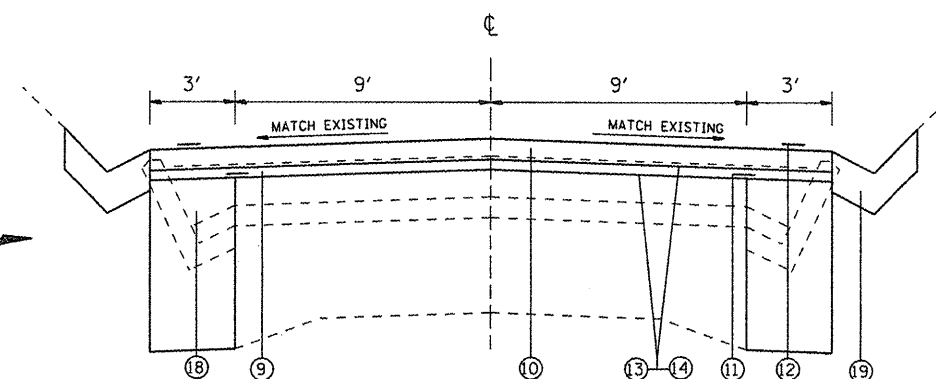
- MILE STA. 0.149 TO 0.276
- MILE STA. 2.963 TO 3.003

LEGEND

- ① EXISTING PAVEMENT 9'-7"-9"
- ② EXISTING HMA RESURFACING 3"
- ③ EXISTING GUTTER, TYPE B
- ④ EXISTING GUTTER (TYPE UNKNOWN)
- ⑤ EXISTING BITUMINOUS RESURFACING (THICKNESS UNKNOWN)
- ⑥ EXISTING BITUMINOUS CONCRETE BASE WIDENING 9"
- ⑦ EXISTING AGGREGATE WEDGE, TYPE B
- ⑧ PROPOSED BITUMINOUS SURFACE REMOVAL 1"
- ⑨ PROPOSED LEVEL BINDER, MACHINE METHOD, 3/4"
- ⑩ PROPOSED HMA SURFACE COURSE, MIX D, 1 1/2"
- ⑪ PROPOSED STRIP REFLECTIVE CRACK CONTROL TREATMENT
- ⑫ PROPOSED PAVEMENT MARKING - LINE 4"
- ⑬ PROPOSED BITUMINOUS MATERIALS PRIME COAT
- ⑭ PROPOSED AGGREGATE PRIME COAT
- ⑮ PROPOSED AGGREGATE WEDGE, TYPE A
- ⑯ PROPOSED HMA SHOULDER, 8"
- ⑰ PROPOSED SHOULDER RUMBLE STRIP
- ⑱ PROPOSED HMA BASE COURSE WIDENING 12"
- ⑲ PROPOSED GUTTER PLACEMENT, TYPE A
- ⑳ PROPOSED GUTTER REMOVAL



TANGENT SECTION
*MILE STA. 0.900 TO 0.980



TANGENT SECTION

- MILE STA. 0.276 TO 0.456
- *MILE STA. 0.900 TO 0.994
- MILE STA. 1.373 TO 1.532
- MILE STA. 4.486 TO 4.579

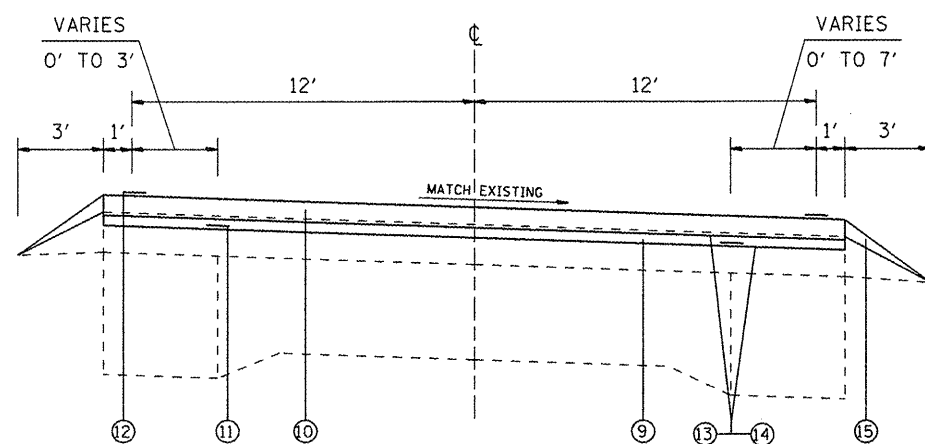
FILE NAME =	USER NAME = #USER#	DESIGNED -	REVISED -
#FILE#		DRAWN -	REVISED -
	PLOT SCALE = #SCALE#	CHECKED -	REVISED -
	PLOT DATE = #DATE#	DATE -	REVISED -

STATE OF ILLINOIS
DEPARTMENT OF TRANSPORTATION

PROPOSED TYPICAL SECTIONS

SCALE: SHEET NO. OF SHEETS STA. TO STA.

F.A.P. RTE.	SECTION	COUNTY	TOTAL SHEETS	SHEET NO.
329	20RS-4(20-2,19)RS-3	RANDOLPH	19	11
FED. ROAD DIST. NO. ILLINOIS FED. AID PROJECT			CONTRACT NO. 76036	



TANGENT SECTION
(SUPER-ELEVATION)

MILE STA. 1.199 TO 1.373
 MILE STA. 2.670 TO 2.844
 MILE STA. 3.284 TO 3.453
 MILE STA. 5.597 TO 5.797
 MILE STA. 6.021 TO 6.270

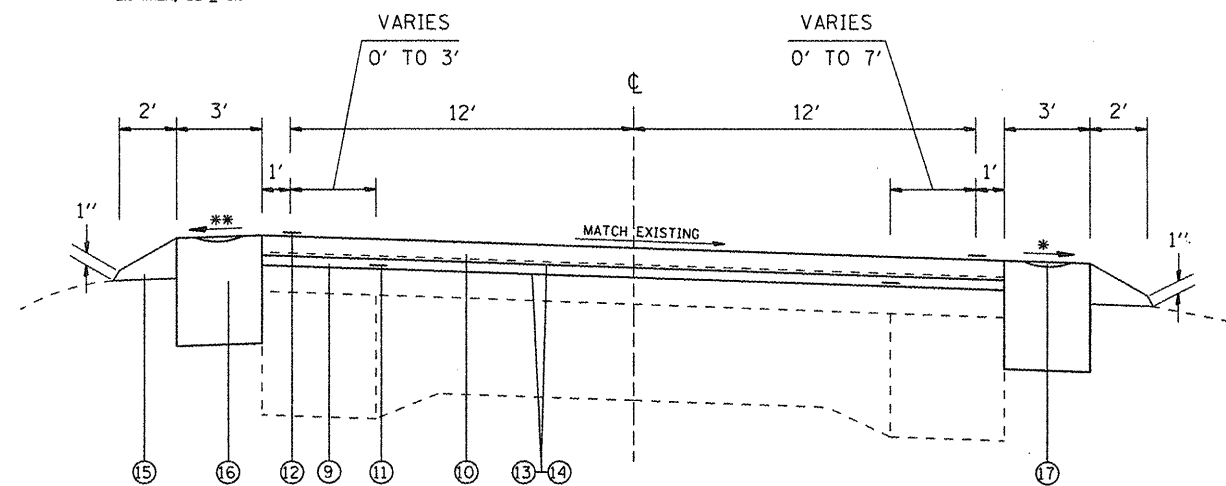
BRIDGE OMISSIONS

MILE STA. 0.149 TO 0.276
 MILE STA. 2.963 TO 3.003

LEGEND

- ① EXISTING PAVEMENT 9"-7'-9"
- ② EXISTING HMA RESURFACING 3"
- ③ EXISTING GUTTER, TYPE B
- ④ EXISTING GUTTER (TYPE UNKNOWN)
- ⑤ EXISTING BITUMINOUS RESURFACING (THICKNESS UNKNOWN)
- ⑥ EXISTING BITUMINOUS CONCRETE BASE WIDENING 9"
- ⑦ EXISTING AGGREGATE WEDGE, TYPE B
- ⑧ PROPOSED BITUMINOUS SURFACE REMOVAL 1"
- ⑨ PROPOSED LEVEL BINDER, MACHINE METHOD, 3/4"
- ⑩ PROPOSED HMA SURFACE COURSE, MIX D, 1 1/2"
- ⑪ PROPOSED STRIP REFLECTIVE CRACK CONTROL TREATMENT
- ⑫ PROPOSED PAVEMENT MARKING - LINE 4"
- ⑬ PROPOSED BITUMINOUS MATERIALS PRIME COAT
- ⑭ PROPOSED AGGREGATE PRIME COAT
- ⑮ PROPOSED AGGREGATE WEDGE, TYPE A
- ⑯ PROPOSED HMA SHOULDER, 8"
- ⑰ PROPOSED SHOULDER RUMBLE STRIP
- ⑱ PROPOSED HMA BASE COURSE WIDENING 12"
- ⑲ PROPOSED GUTTER PLACEMENT, TYPE A
- ⑳ PROPOSED GUTTER REMOVAL

** 4% WHEN, SE ≤ 4%
 4%-2% WHEN, 4% < SE < 6%
 2% WHEN, SE ≥ 6%



TANGENT SECTION
(SUPER-ELEVATION)

MILE STA. 1.915 TO 2.123

* MATCH EXISTING PAVEMENT CROSS SLOPE, 4% MIN

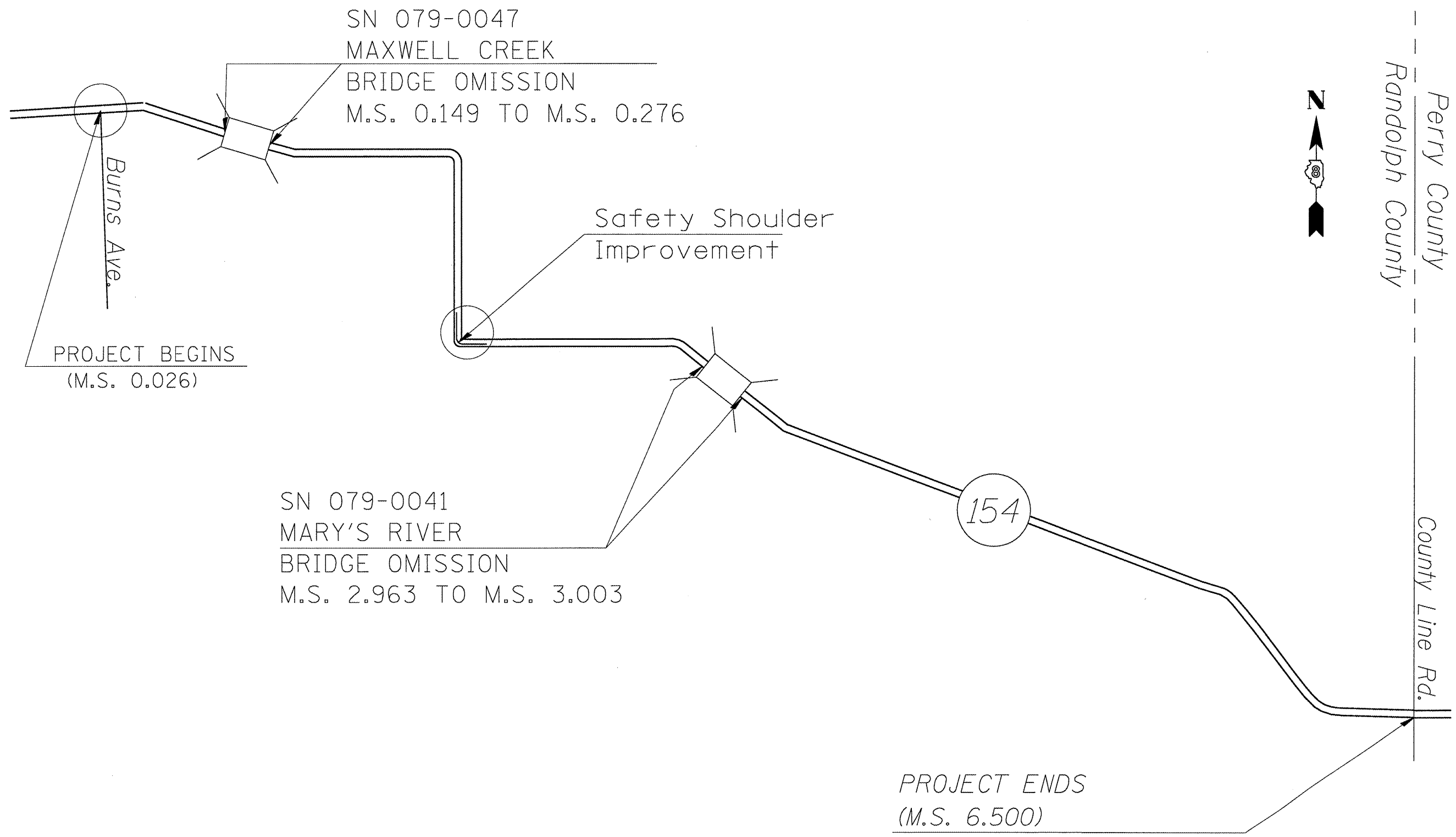
FILE NAME =	USER NAME = #USER#	DESIGNED -	REVISED -
#FILEL#		DRAWN -	REVISED -
	PLOT SCALE = #SCALE#	CHECKED -	REVISED -
	PLOT DATE = #DATE#	DATE -	REVISED -

STATE OF ILLINOIS
DEPARTMENT OF TRANSPORTATION

PROPOSED TYPICAL SECTIONS

SCALE: SHEET NO. OF SHEETS STA. TO STA.

F.A.P. RTE.	SECTION	COUNTY	TOTAL SHEETS	SHEET NO.
329	20RS-4(20-2,19)RS-3	RANDOLPH	19	12
FED. ROAD DIST. NO. ILLINOIS FED. AID PROJECT			CONTRACT NO. 76D36	

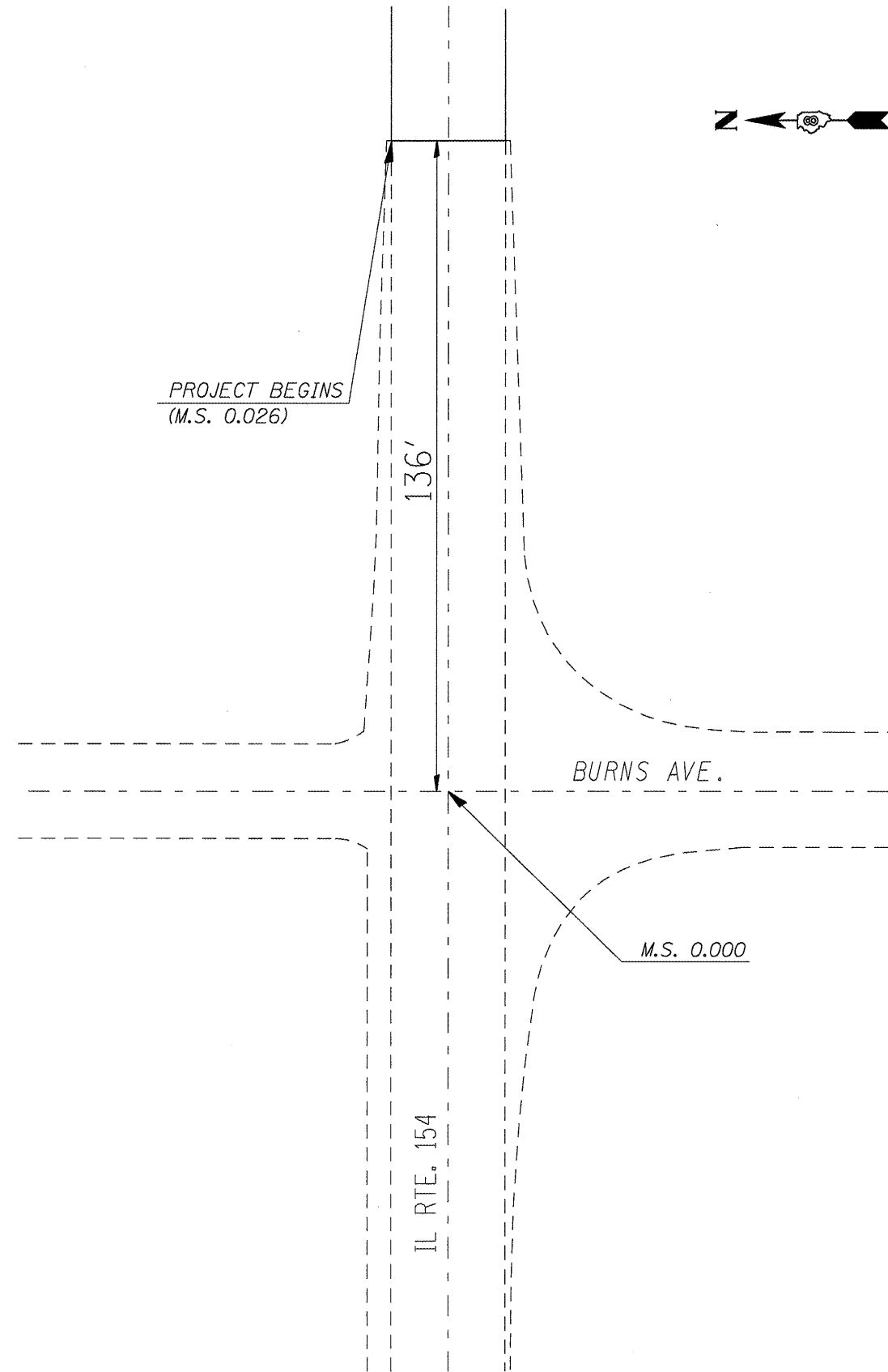


FILE NAME =	USER NAME = #USER*	DESIGNED -	REVISED -
#FILE#		DRAWN -	REVISED -
	PLOT SCALE = #SCALE*	CHECKED -	REVISED -
	PLOT DATE = #DATE*	DATE -	REVISED -

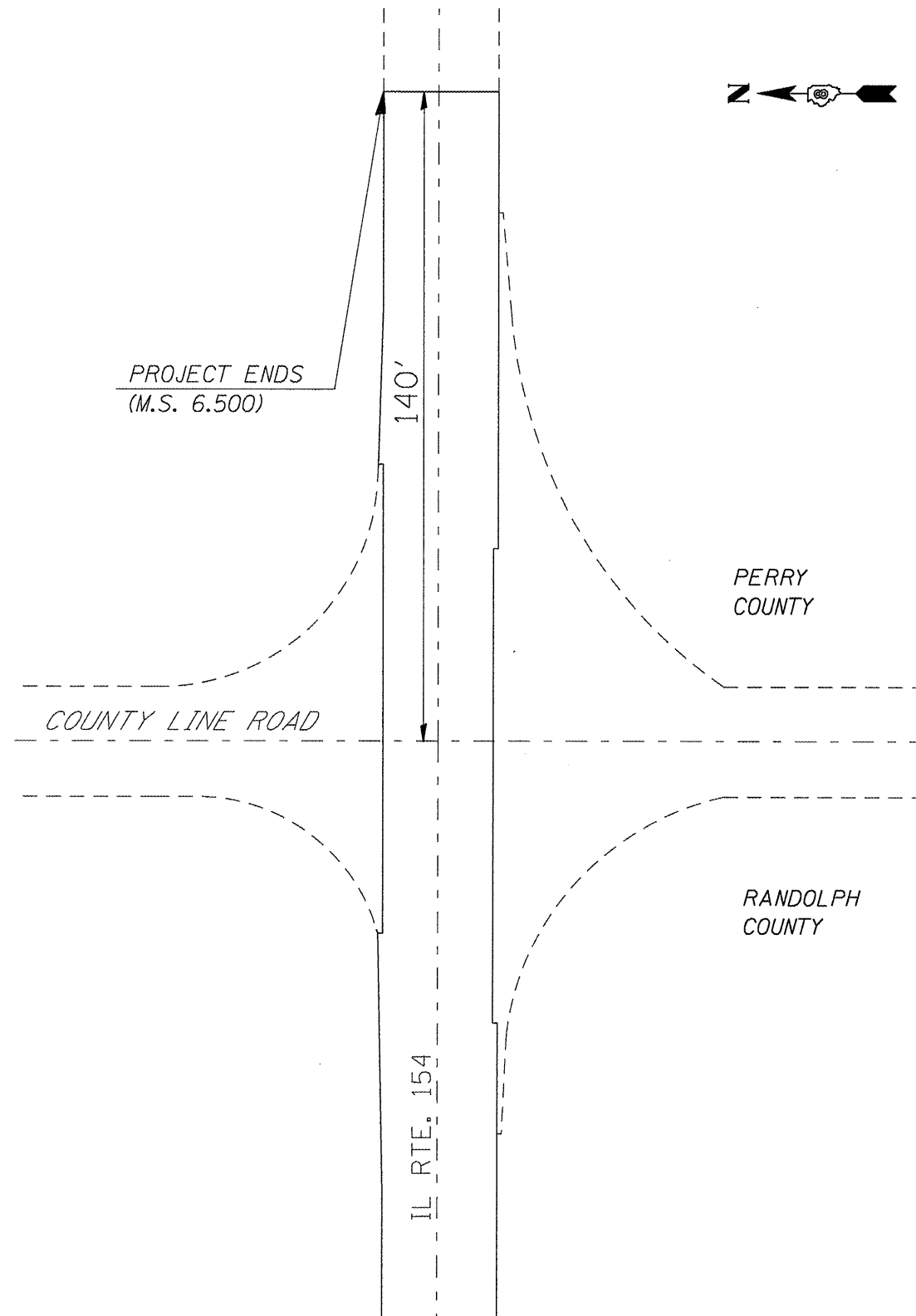
STATE OF ILLINOIS
DEPARTMENT OF TRANSPORTATION

LOCATION MAP			
SCALE:	SHEET NO.	OF SHEETS	STA. TO STA.

F.A.P. RTE.	SECTION	COUNTY	TOTAL SHEETS	SHEET NO.
329	20RS-4(20-2,19)RS-3	RANDOLPH	19	13
FED. ROAD DIST. NO.			ILLINOIS FED. AID PROJECT	
			CONTRACT NO. 76036	



NOT TO SCALE



NOT TO SCALE

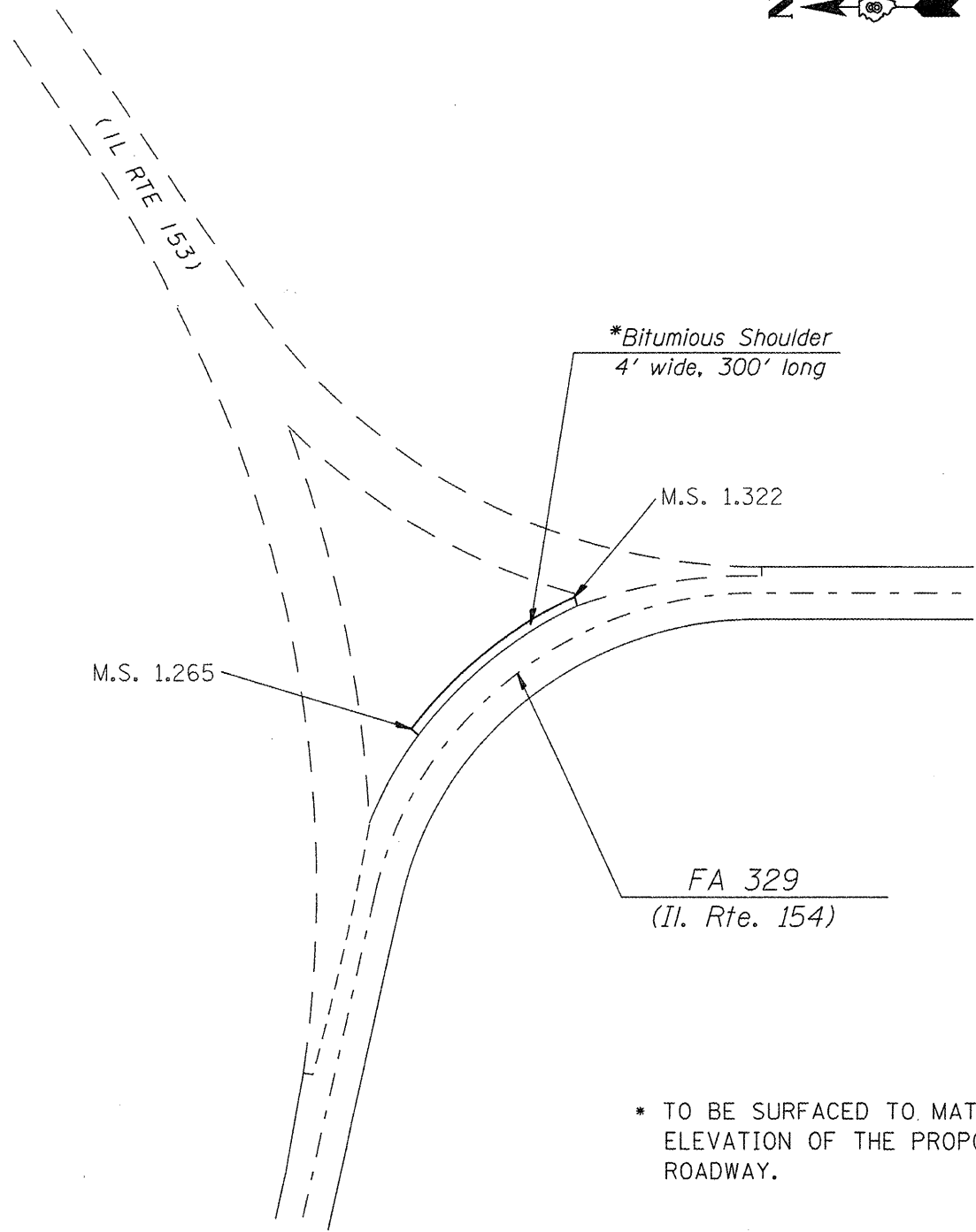
FILE NAME = #FILE#	USER NAME = #USER#	DESIGNED -	REVISED -
	PLOT SCALE = #SCALE#	DRAWN -	REVISED -
	PLOT DATE = #DATE#	CHECKED -	REVISED -
		DATE -	REVISED -

STATE OF ILLINOIS
DEPARTMENT OF TRANSPORTATION

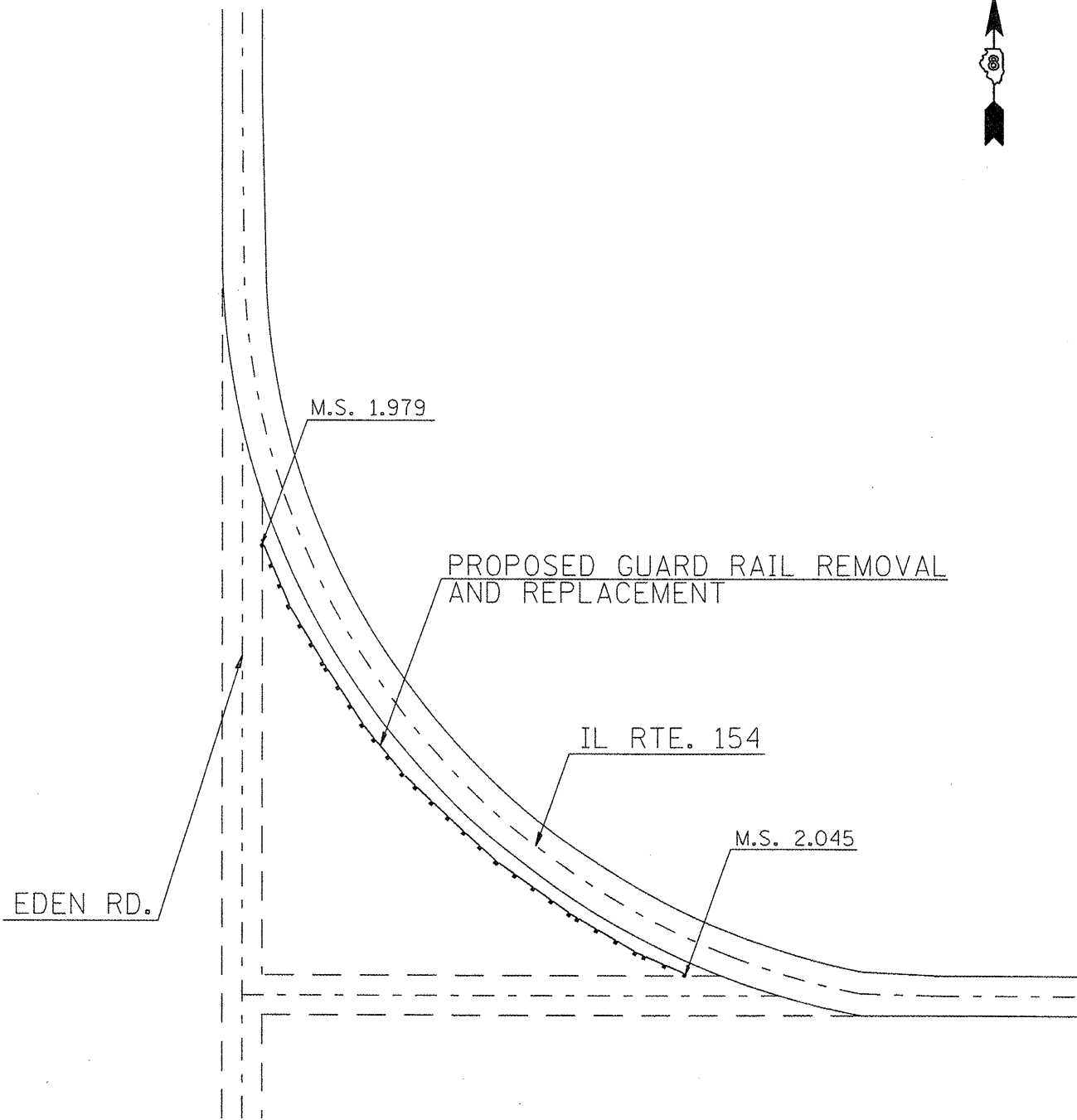
BEGINING AND END OF PROJECT LOCATION MAPS

SCALE: SHEET NO. OF SHEETS STA. TO STA.

F.A.P. RTE.	SECTION	COUNTY	TOTAL SHEETS	SHEET NO.
329	20RS-4(20-2,19)RS-3	RANDOLPH	19	14
FED. ROAD DIST. NO. ILLINOIS FED. AID PROJECT			CONTRACT NO. 76D36	



NOT TO SCALE



NOT TO SCALE

FILE NAME = #FILE#	USER NAME = #USER#	DESIGNED -	REVISED -
		DRAWN -	REVISED -
		CHECKED -	REVISED -
		DATE -	REVISED -

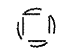

STATE OF ILLINOIS
DEPARTMENT OF TRANSPORTATION

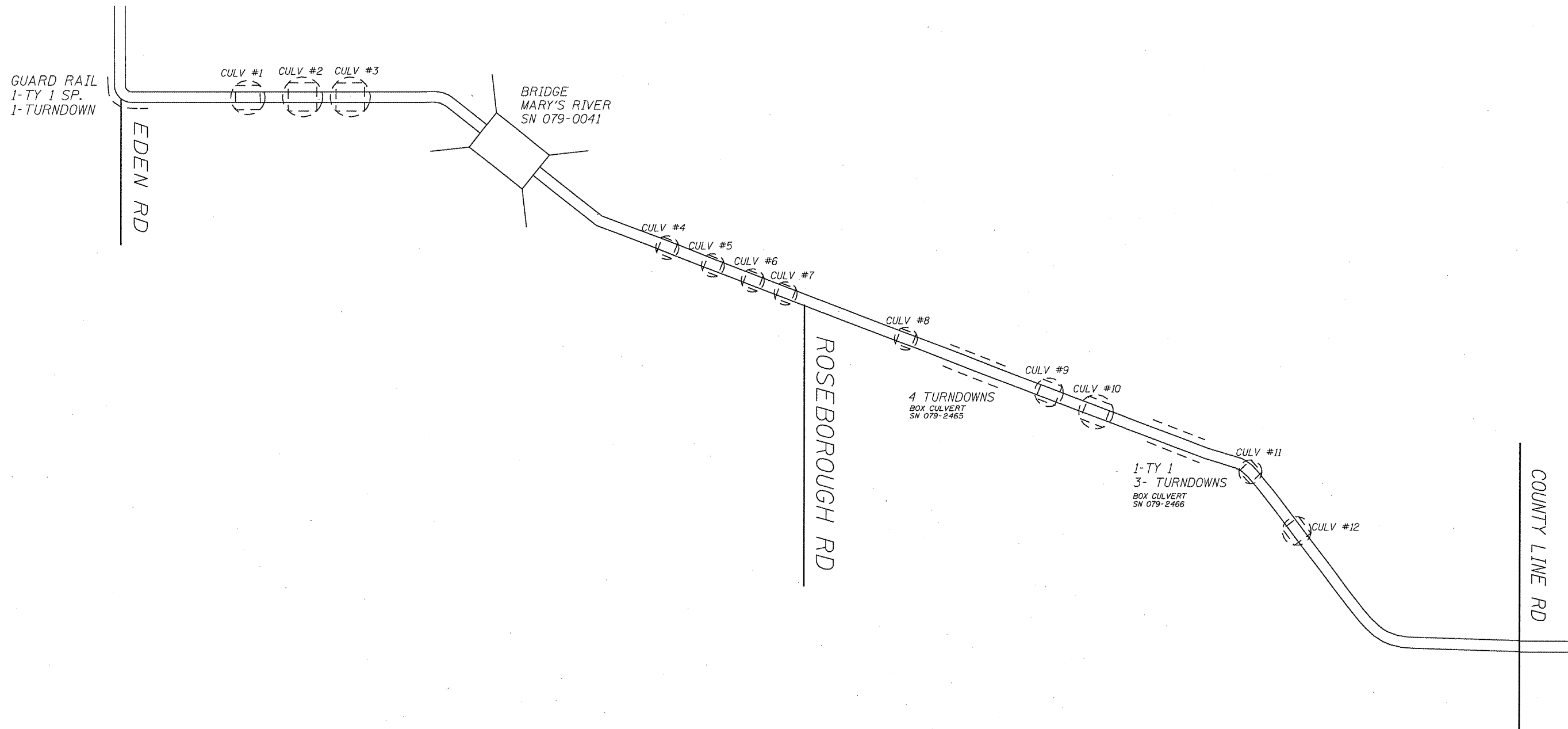
MAYOR INTERSECTION DETAILS

F.A.P. RTE.	SECTION	COUNTY	TOTAL SHEETS	SHEET NO.
329	20RS-4(20-2,19)RS-3	RANDOLPH	19	15
FED. ROAD DIST. NO.			ILLINOIS FED. AID PROJECT	
CONTRACT NO. 76D36				

SCALE: SHEET NO. OF SHEETS STA. TO STA.

GUARDRAIL AND BOX CULVERTS LOCATION

-  BOX CULVERT
-  EXISTING GUARDRAIL TO BE REMOVED AND UPDATED



FILE NAME =	USER NAME = #USER#	DESIGNED -	REVISED -
#FILE#		DRAWN -	REVISED -
	PLOT SCALE = #SCALE#	CHECKED -	REVISED -
	PLOT DATE = #DATE#	DATE -	REVISED -

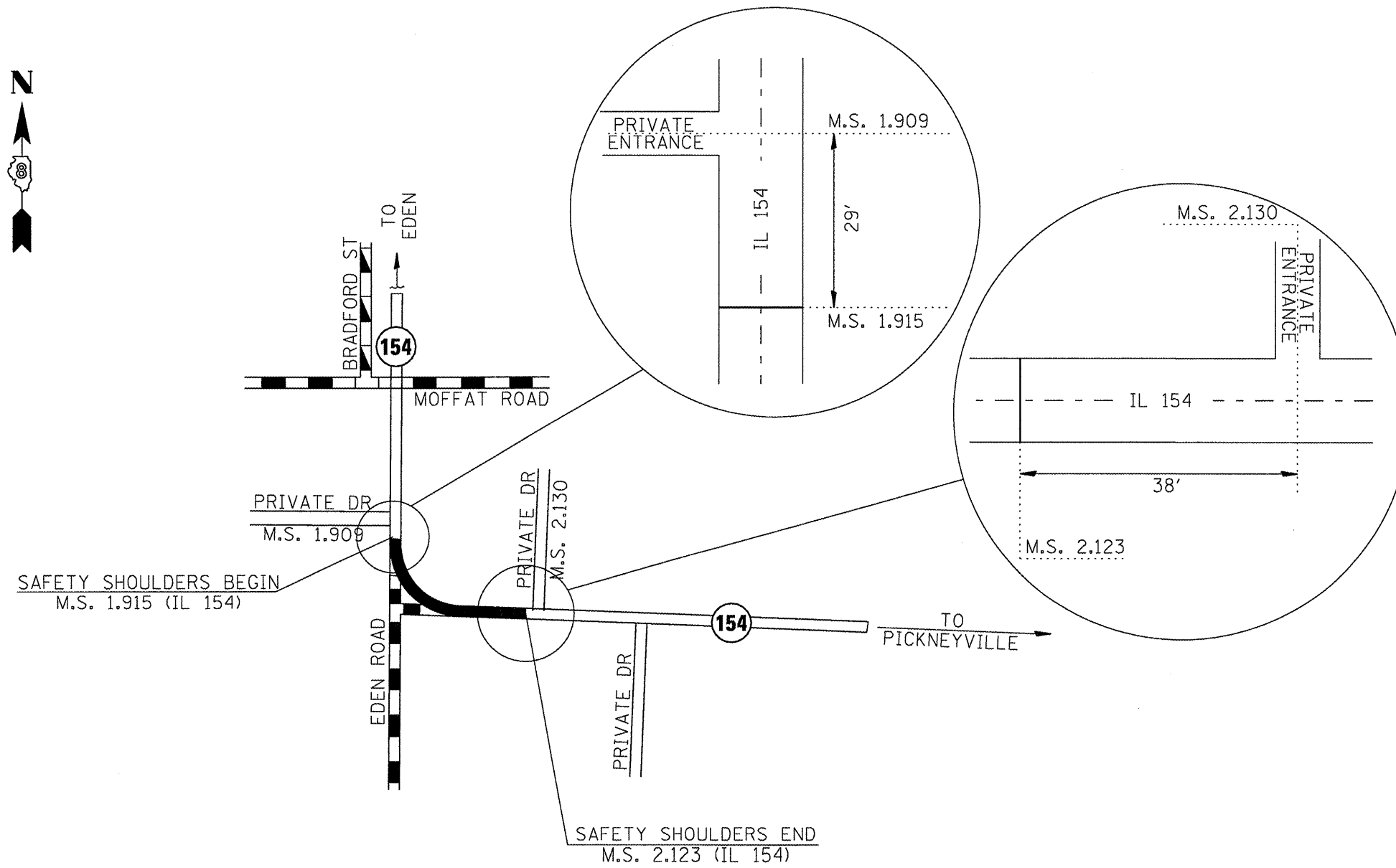
**STATE OF ILLINOIS
DEPARTMENT OF TRANSPORTATION**

PROPOSED GUARDRAIL AND CULVERTS LOCATION MAP

SCALE: SHEET NO. OF SHEETS STA. TO STA.

F.A.P. RTE.	SECTION	COUNTY	TOTAL SHEETS	SHEET NO.
329	20RS-4(20-2.19)RS-3	RANDOLPH	19	16
FED. ROAD DIST. NO. ILLINOIS FED. AID PROJECT			CONTRACT NO. 76D36	

SAFETY SHOULDERS LOCATION MAP



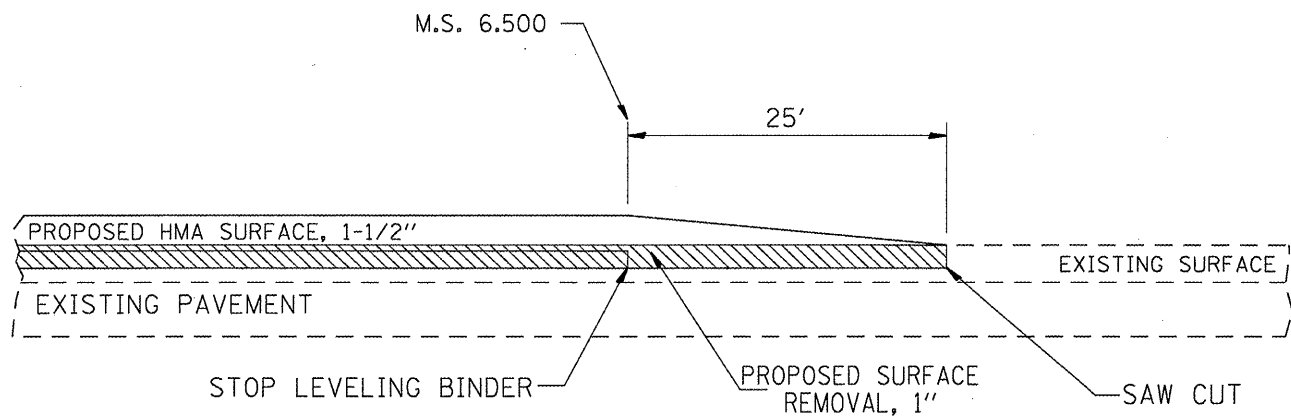
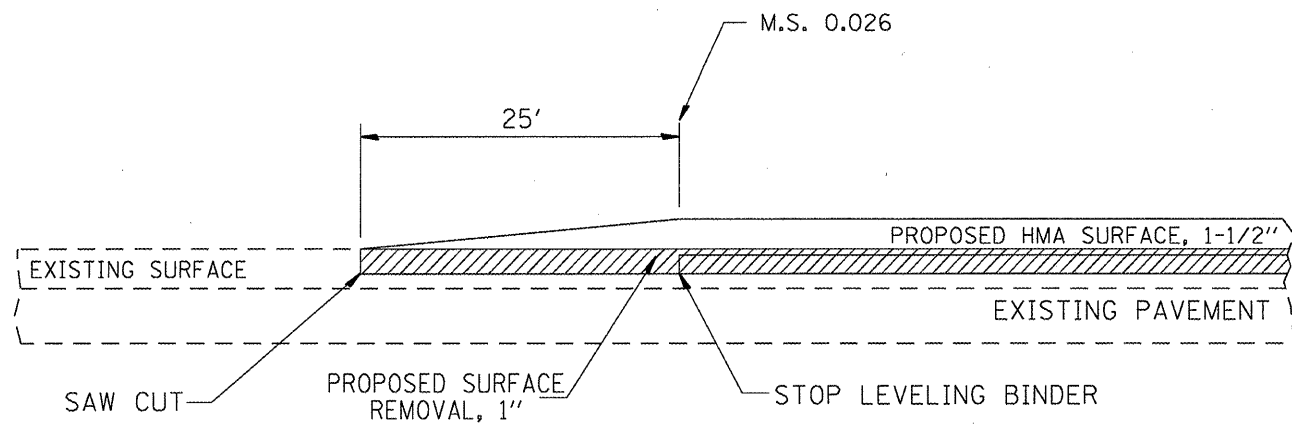
FILE NAME = #FILEL*	USER NAME = #USER*	DESIGNED -	REVISED -
		DRAWN -	REVISED -
	PLOT SCALE = #SCALE*	CHECKED -	REVISED -
	PLOT DATE = #DATE*	DATE -	REVISED -

**STATE OF ILLINOIS
DEPARTMENT OF TRANSPORTATION**

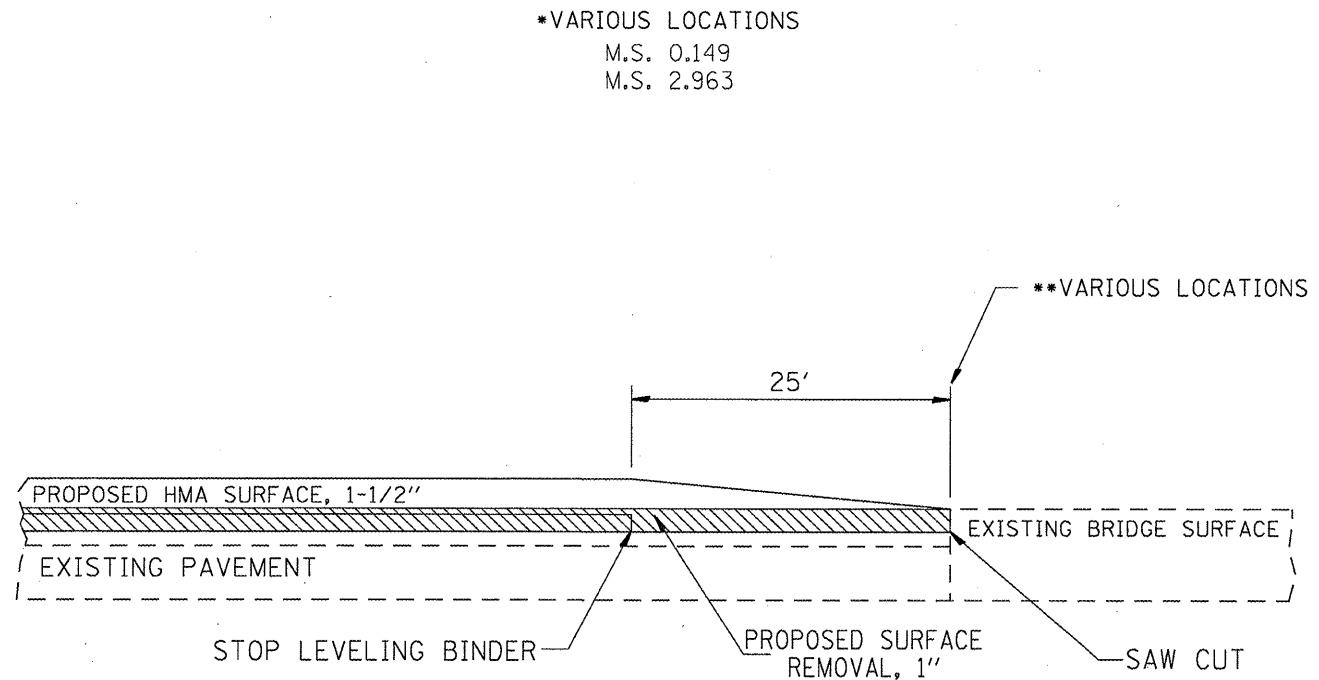
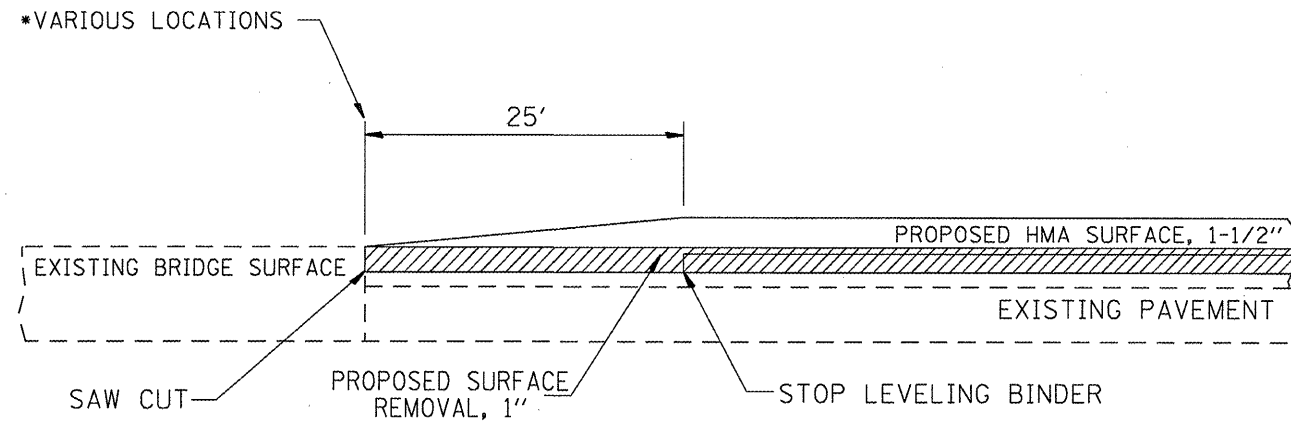
SAFETY SHOULDER IMPROVEMENT LOCATION MAP			
SCALE:	SHEET NO.	OF SHEETS	STA. TO STA.

F.A.P. RTE.	SECTION	COUNTY	TOTAL SHEETS	SHEET NO.
329	20RS-4120-2,19RS-3	RANDOLPH	19	17
CONTRACT NO. 76D36				
FED. ROAD DIST. NO. ILLINOIS FED. AID PROJECT				

RESURFACING DETAIL



RESURFACING DETAIL



*VARIOUS LOCATIONS
M.S. 0.149
M.S. 2.963

**VARIOUS LOCATIONS
M.S. 0.276
M.S. 3.003

FILE NAME =	USER NAME = #USER#	DESIGNED -	REVISED -
#FILE#		DRAWN -	REVISED -
	PLOT SCALE = #SCALE#	CHECKED -	REVISED -
	PLOT DATE = #DATE#	DATE -	REVISED -

STATE OF ILLINOIS
DEPARTMENT OF TRANSPORTATION

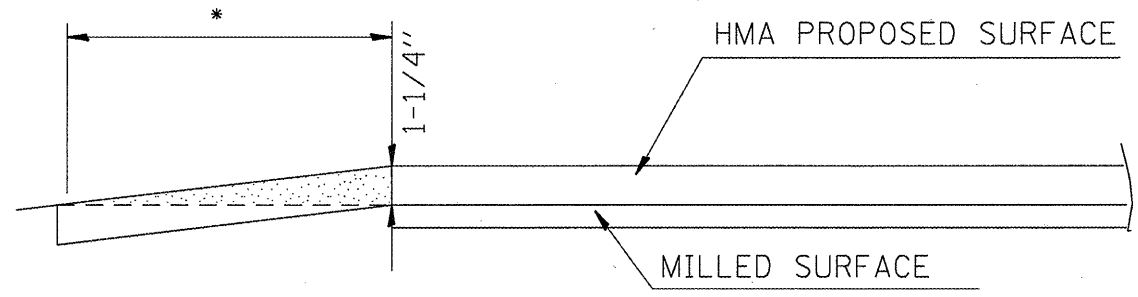
RESURFACING DETAILS

SCALE: SHEET NO. OF SHEETS STA. TO STA.

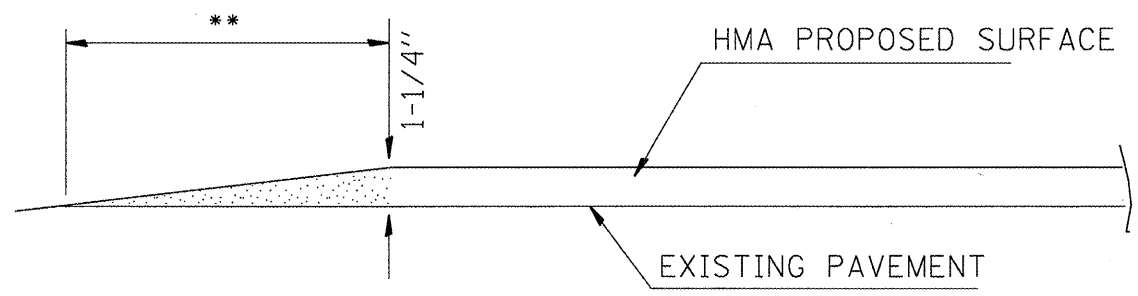
F.A.P. RTE.	SECTION	COUNTY	TOTAL SHEETS	SHEET NO.
329	20RS-4120-2,19RS-3	RANDOLPH	19	18
FED. ROAD DIST. NO. ILLINOIS FED. AID PROJECT			CONTRACT NO. 76D36	

SIDEROAD AND ENTRANCE DETAIL

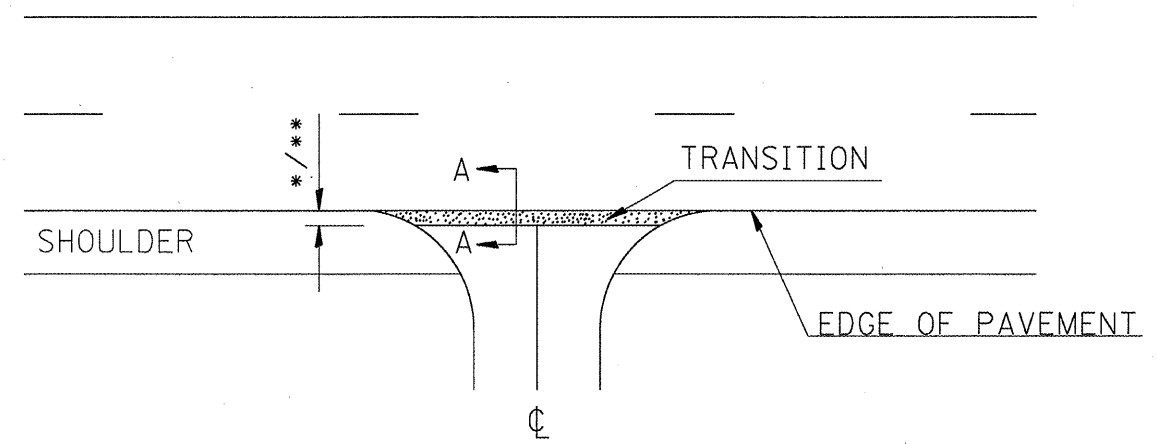
- * SIDEROAD = 7.5'
- ** ENTRANCE = 3'



SIDEROAD TRANSITION DETAIL
SECTION A-A

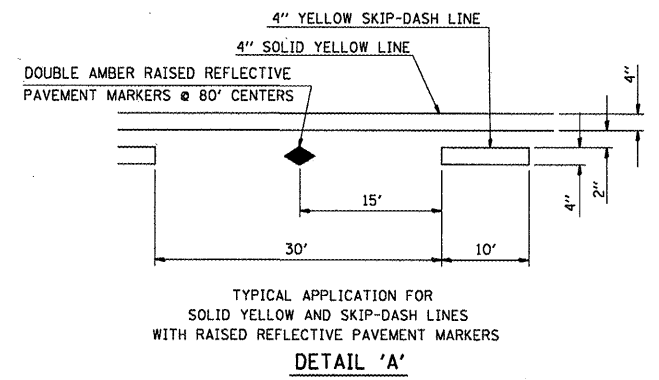


ENTRANCE TRANSITION DETAIL
SECTION A-A

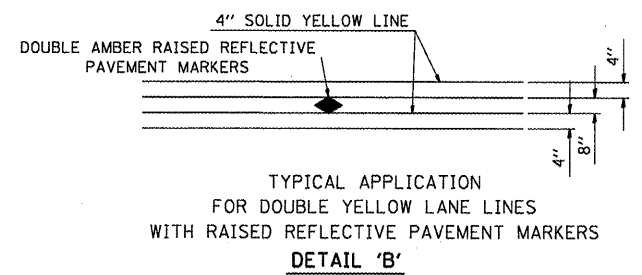


SIDEROAD AND ENTRANCE DETAIL

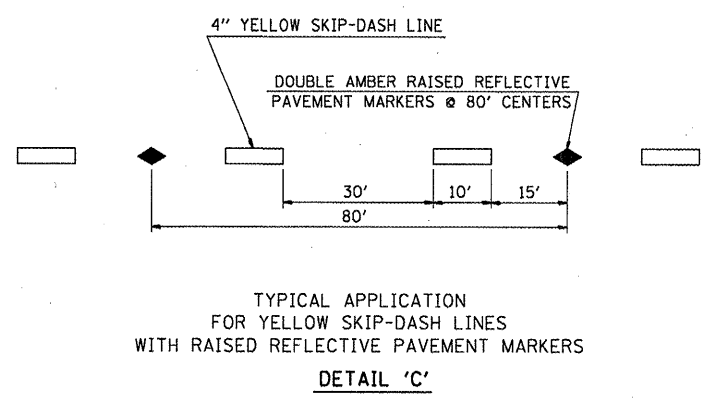
PAVEMENT MARKINGS DETAIL



TYPICAL APPLICATION FOR
SOLID YELLOW AND SKIP-DASH LINES
WITH RAISED REFLECTIVE PAVEMENT MARKERS
DETAIL 'A'



TYPICAL APPLICATION
FOR DOUBLE YELLOW LANE LINES
WITH RAISED REFLECTIVE PAVEMENT MARKERS
DETAIL 'B'



TYPICAL APPLICATION
FOR YELLOW SKIP-DASH LINES
WITH RAISED REFLECTIVE PAVEMENT MARKERS
DETAIL 'C'

FILE NAME =	USER NAME = #USER#	DESIGNED -	REVISED -
#FILE#		DRAWN -	REVISED -
	PLOT SCALE = #SCALE#	CHECKED -	REVISED -
	PLOT DATE = #DATE#	DATE -	REVISED -

**STATE OF ILLINOIS
DEPARTMENT OF TRANSPORTATION**

ENTANCES, SIDE ROADS, AND PAVEMENT MARKING DETAILS

SCALE: SHEET NO. OF SHEETS STA. TO STA.

F.A.P. RTE.	SECTION	COUNTY	TOTAL SHEETS	SHEET NO.
329	20RS-4(20-2,19)RS-3	RANDOLPH	19	19
FED. ROAD DIST. NO. ILLINOIS FED. AID PROJECT			CONTRACT NO. 76D36	