

INDEX OF SHEETS

- 1 COVER SHEET
- 2 GENERAL NOTES
- 3 SUMMARY OF QUANTITIES
- 4 SCHEDULE OF QUANTITIES
- 5-16 PLAN AND PROFILE
- 17-20 DETAILS

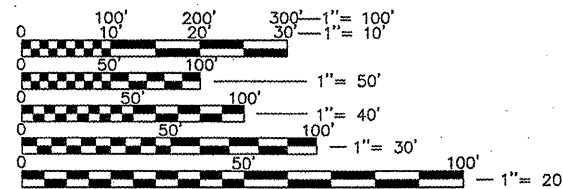
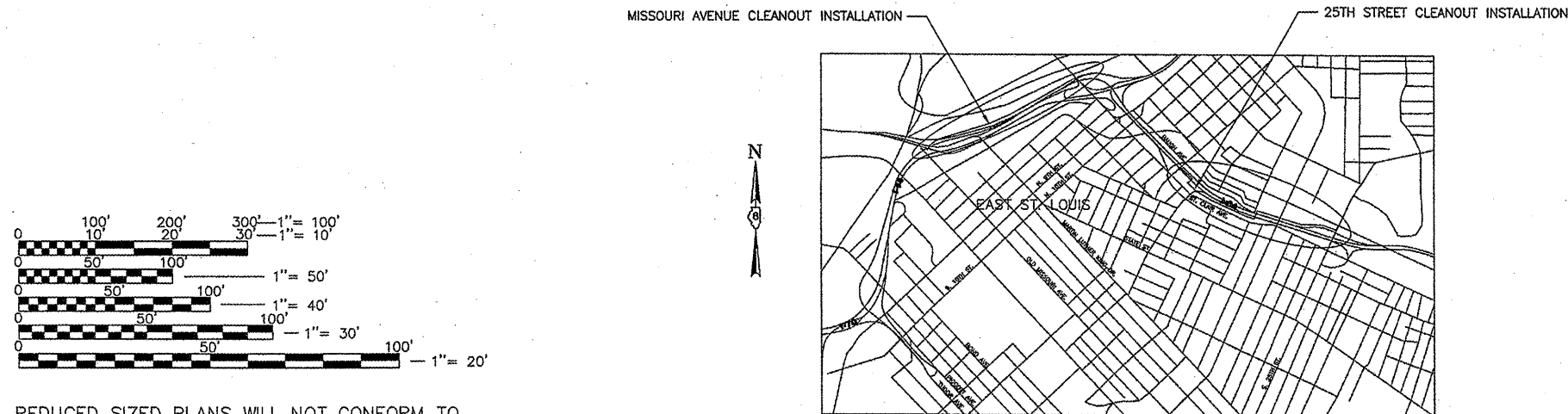
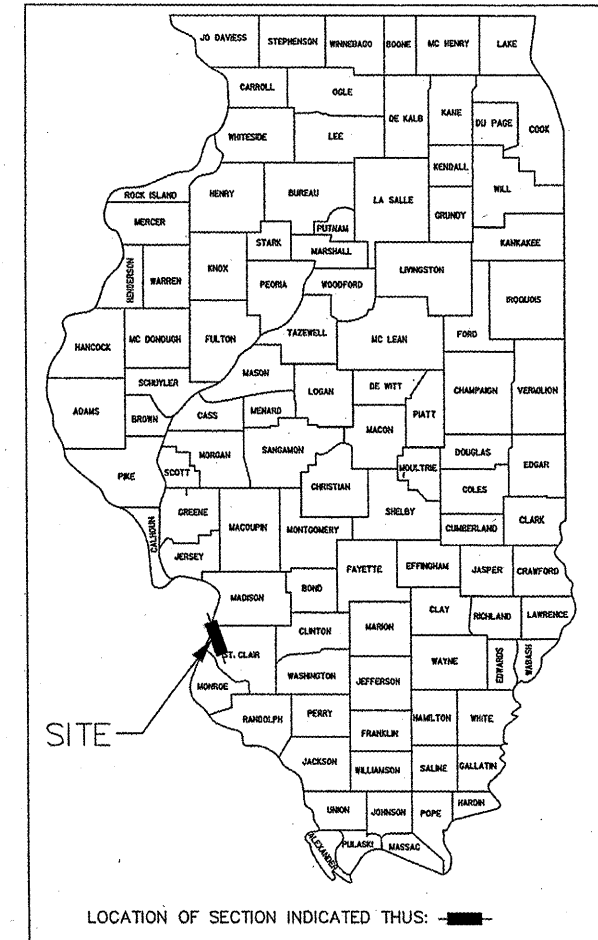
STANDARDS

- 000001-05 STANDARD SYMBOLS, ABBREVIATIONS AND PATTERNS
- 280001-05 TEMPORARY EROSION CONTROL SYSTEMS
- 602701-02 MANHOLE STEPS
- 701001-02 OFF-RD OPERATIONS, 2L, 2W, MORE THAN 15' (4.5 m) AWAY
- 701006-03 OFF-RD OPERATIONS, 2L, 2W, 15' (4.5 m) TO 24" (600 mm) FROM PAVEMENT EDGE
- 701201-03 LANE CLOSURE, 2L, 2W, DAY ONLY, FOR SPEEDS \geq 45 MPH
- 701901-01 TRAFFIC CONTROL DEVICES

STATE OF ILLINOIS
DEPARTMENT OF TRANSPORTATION
DIVISION OF HIGHWAYS
**PROPOSED
HIGHWAY PLANS**
FAP ROUTE - VARIOUS
SECTION DIST 8 DEEP WELLS 2010-2
**CLEANOUT INSTALLATION
IN EAST ST. LOUIS, ILLINOIS
ST. CLAIR COUNTY**
C-98-043-10

F.A.P. RTE.	SECTION	COUNTY	TOTAL SHEETS	SHEET NO.
VARIOUS	DIST 8 DEEP WELLS 2010-2	ST. CLAIR	20	1
ILLINOIS		CONTRACT NO. 76D62		

D-98-029-10



REDUCED SIZED PLANS WILL NOT CONFORM TO STANDARD SCALES. IN MAKING MEASUREMENTS ON REDUCED PLANS, THE ABOVE SCALES MAY BE USED.

J.U.L.I.E.
JOINT UTILITY LOCATION INFORMATION FOR EXCAVATION
1-800-892-0123
OR 811

PROJECT ENGINEER: PATTI LEBEAU (618) 346-3179
PROJECT MANAGER: ARTHUR MUEHLFELD (618) 346-3209

GROSS LENGTH = 23,433 FT. = 4.44 MILE
NET LENGTH = 23,433 FT. = 4.44 MILE

CONTRACT NO. 76D62



PREPARED BY
MACTEC
ENGINEERING AND CONSULTING, INC.
ILLINOIS PROFESSIONAL DESIGN FIRM LICENSE NO. 062-055296

ERIC J. CARLSON
IL REG. P.E. NO. 062-055296
EXPIRATION DATE 11-30-11

STATE OF ILLINOIS
DEPARTMENT OF TRANSPORTATION
DIVISION OF HIGHWAYS
SUBMITTED: May 13 2010
May 13 2010
DEPUTY DIRECTOR OF HIGHWAYS, REGION 5 ENGINEER
June 25 2010
Scott E. Stitt, P.E.
acting ENGINEER OF DESIGN AND ENVIRONMENT
June 25 2010
Christine M. Reed
DIRECTOR OF HIGHWAYS, CHIEF ENGINEER

PRINTED BY THE AUTHORITY
OF THE STATE OF ILLINOIS