

STATE OF ILLINOIS
DEPARTMENT OF TRANSPORTATION
DIVISION OF HIGHWAYS

**PROPOSED
HIGHWAY PLANS**

FAP ROUTE 841 (IL 154)
SECTION 108B-1
PERRY COUNTY
CULVERT REPLACEMENT
IL 154 OVER PANTHER CREEK

SN 073-0016 (E)
SN 073-2007 (P)

C-99-044-08

PROJECT: ACBRF-0841(013)

| F.A.P. RTE. | SECTION | COUNTY | TOTAL SHEETS | SHEET NO. |
|-------------|---------|----------|--------------------|-----------|
| 841 | 108B-1 | PERRY | 27 | 1 |
| | | ILLINOIS | CONTRACT NO. 78059 | |

D-99-029-08

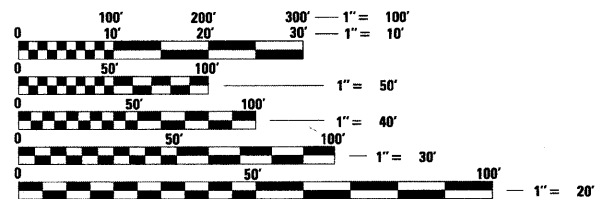


LOCATION OF SECTION INDICATED THUS: - ■ -

FOR INDEX OF SHEETS, SEE SHEET NO. 2

TRAFFIC DATA

2007 ADT = 4810
10.7% TRUCKS
POSTED SPEED = 55 MPH

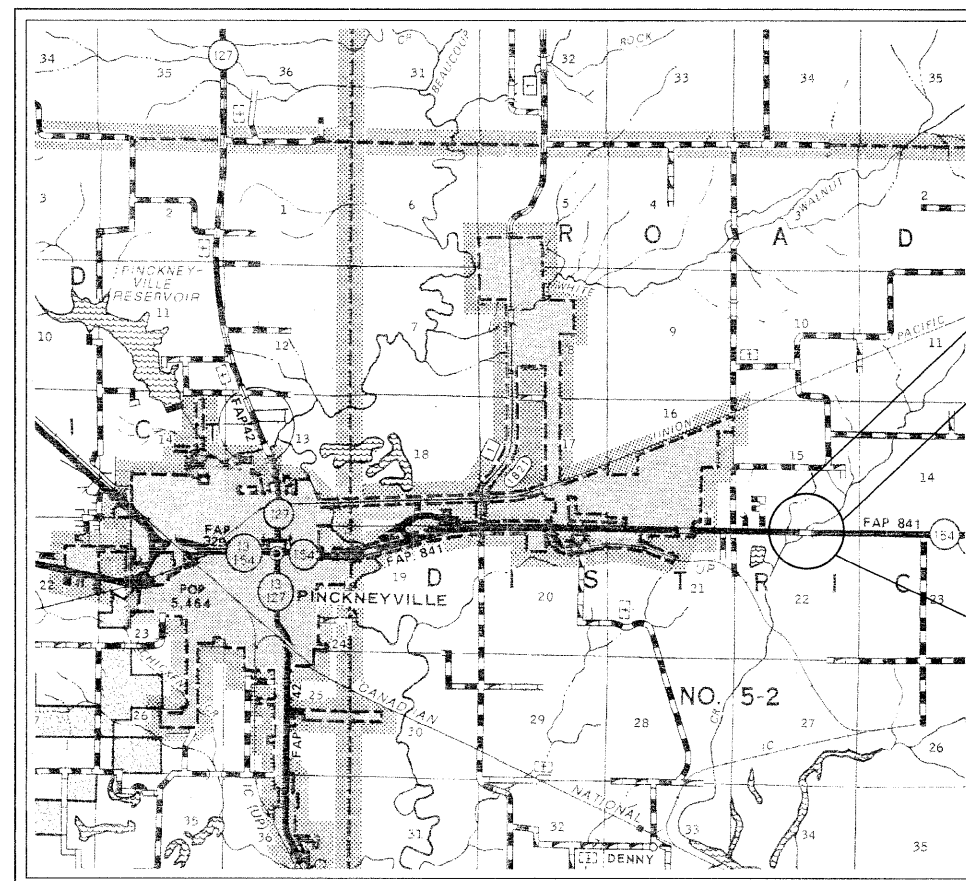


FULL SIZE PLANS HAVE BEEN PREPARED USING STANDARD ENGINEERING SCALES. REDUCED SIZED PLANS WILL NOT CONFORM TO STANDARD SCALES. IN MAKING MEASUREMENTS ON REDUCED PLANS, THE ABOVE SCALES MAY BE USED.

J.U.L.I.E.
JOINT UTILITY LOCATION INFORMATION FOR EXCAVATION
1-800-892-0123
OR 811

PROJECT ENGINEER: BILL PORTER
PROJECT MANAGER: DAVID PICHE

CONTRACT NO. 78059



PROPOSED PROJECT BEGINS
STA 231+70

PROPOSED PROJECT LOCATION
STA 232+00
SN 073-0016 (E)
SN 073-2007 (P)
IL 154
OVER PANTHER CREEK

PROPOSED PROJECT ENDS
STA 232+30

GROSS LENGTH = 60 FT.
NET LENGTH = 60 FT.

STATE OF ILLINOIS
DEPARTMENT OF TRANSPORTATION
DIVISION OF HIGHWAYS

SUBMITTED May 6 20 10

Mary C. Lamic
DEPUTY DIRECTOR OF HIGHWAYS, REGION ENGINEER

June 25 20 10
Scott E. Stitt, P.E.
ENGINEER OF DESIGN AND ENVIRONMENT

June 25 20 10
Christine M. Reed
DIRECTOR OF HIGHWAYS, CHIEF ENGINEER

PRINTED BY THE AUTHORITY
OF THE STATE OF ILLINOIS