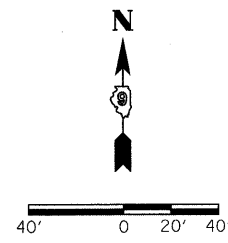


PARCEL NO.	NAME	PURPOSE	ACREAGE
110	JAMES AND EVA LEE	T.E.	0.023
111	ROGER SEIBERT TRUSTEE	T.E.	0.007
112	ROGER MARLOW	ROW	0.110



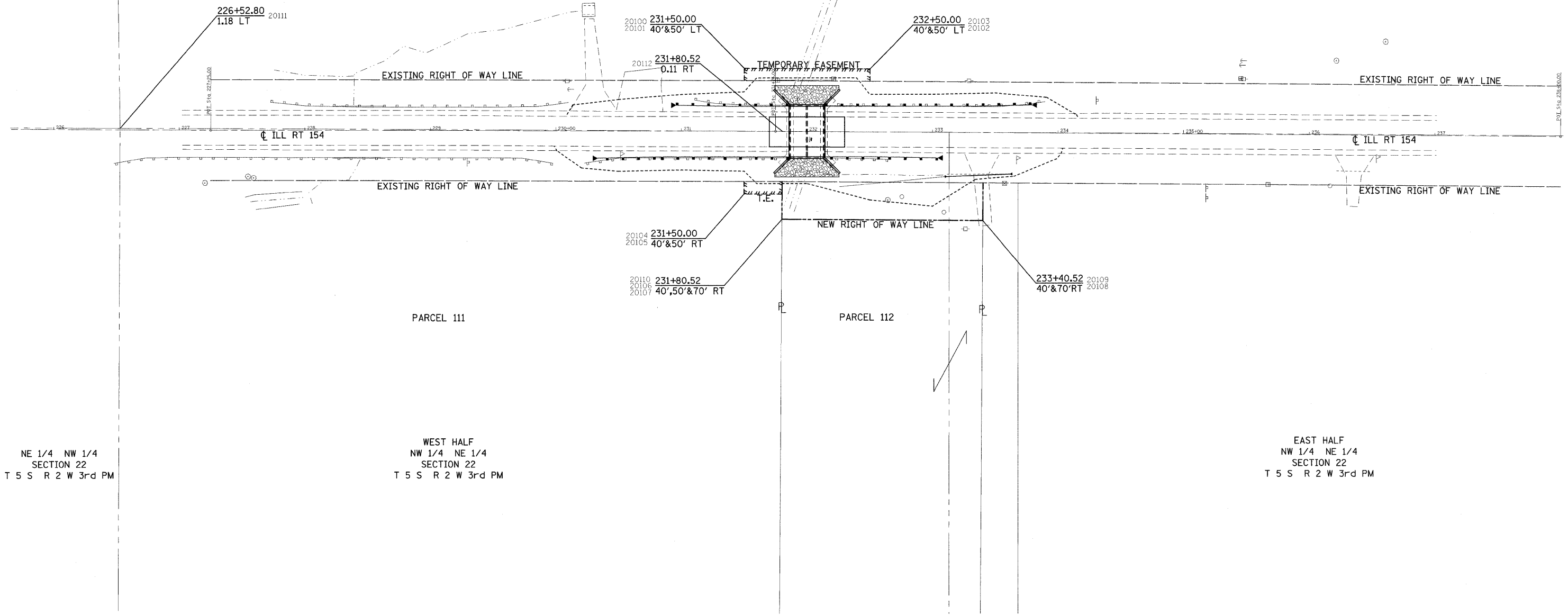
SE 1/4 SW 1/4
SECTION 15
T 5 S R 2 W 3rd PM

SW 1/4 SE 1/4
SECTION 15
T 5 S R 2 W 3rd PM

PARCEL 110

POINT COORDINATES

P+ 20100	N 516762.4883	E 2544809.5042
P+ 20101	N 516772.4883	E 2544809.5317
P+ 20102	N 516771.8886	E 2544909.7459
P+ 20103	N 516761.8888	E 2544909.6752
P+ 20104	N 516682.4886	E 2544809.2847
P+ 20105	N 516672.4887	E 2544809.2573
P+ 20106	N 516672.3840	E 2544839.5619
P+ 20107	N 516652.3826	E 2544839.4205
P+ 20108	N 516651.2518	E 2544999.4165
P+ 20109	N 516681.2511	E 2544999.6286
P+ 20110	N 516682.3822	E 2544839.6326
P+ 20111	N 516725.3515	E 2544312.2070
P+ 20112	N 516722.2687	E 2544839.9146



NE 1/4 NW 1/4
SECTION 22
T 5 S R 2 W 3rd PM

WEST HALF
NW 1/4 NE 1/4
SECTION 22
T 5 S R 2 W 3rd PM

EAST HALF
NW 1/4 NE 1/4
SECTION 22
T 5 S R 2 W 3rd PM

FILE NAME c:\pwork\pwork\cornellm\dms43827\1-981509_sht_row.dgn	USER NAME = cornellm	DESIGNED -	REVISED -	STATE OF ILLINOIS DEPARTMENT OF TRANSPORTATION	RIGHT OF WAY PLANS			F.A.P. RTE. 841	SECTION 108B-1	COUNTY PERRY	TOTAL SHEETS 27	SHEET NO. 8
PLOT SCALE = 40,0000 1/ IN.	CHECKED -	REVISED -	REVISED -		PROJECT SHEET NO. 1 OF 1 SHEETS	JOB NO. R99-015-09	STA. 226+00.00 TO STA. 238+00.00		CONTRACT NO. 98059			
PLOT DATE = 4/29/2010	DATE -	REVISED -	REVISED -		FED. ROAD DIST. NO. ILLINOIS FED. AID PROJECT							