



STORM WATER POLLUTION PREVENTION PLAN

THE GENERAL CONTRACTOR AND ALL SUBCONTRACTORS INVOLVED WITH A CONSTRUCTION ACTIVITY THAT DISTURBS SITE SOIL OR WHO IMPLEMENT A POLLUTANT CONTROL MEASURE IDENTIFIED IN THE STORM WATER POLLUTION PREVENTION PLAN (SWPPP) MUST COMPLY WITH THE FOLLOWING REQUIREMENTS OF THE NATIONAL POLLUTANT DISCHARGE ELIMINATION SYSTEMS (NPDES) GENERAL PERMIT:

- SUBMITTAL OF A COMPLETED NOTICE OF INTENT (NOI) IS MANDATORY FOR THE PROJECT. A COMPLETED NOI MUST BE SUBMITTED TO THE IEPA AT LEAST 30 DAYS PRIOR TO THE DATE ON WHICH A LAND DISTURBING ACTIVITY IS TO COMMENCE.
- A COPY OF THE NOI AND A DESCRIPTION OF THE PROJECT MUST BE POSTED IN A PROMINENT PLACE FOR PUBLIC VIEWING AT THE CONSTRUCTION SITE.
- COMPLETE COPY OF THE SWPPP, INCLUDING COPIES OF INSPECTION REPORTS, PLAN REVISIONS, ETC, MUST BE MAINTAINED AT THE PROJECT SITE DURING WORKING HOURS AND KEPT IN THE PERMANENT PROJECT RECORDS FOR AT LEAST SIX YEARS FOLLOWING SUBMISSION OF THE NOTICE OF TERMINATION (NOT).
- THE GENERAL CONTRACTOR MUST PROVIDE NAMES AND ADDRESSES OF ALL SUBCONTRACTORS WORKING ON THIS PROJECT WHO WILL BE INVOLVED WITH THE MAJOR CONSTRUCTION ACTIVITIES. THIS INFORMATION IS TO BE KEPT WITH THE SWPPP.
- REGULAR INSPECTION MUST BE MADE TO DETERMINE THE EFFECTIVENESS OF THE SWPPP. THE INSPECTOR MUST BE A PERSON FAMILIAR WITH THE SITE, THE NATURE OF THE MAJOR CONSTRUCTION ACTIVITIES, AND QUALIFIED TO EVALUATE BOTH OVERALL SYSTEM PERFORMANCE AND INDIVIDUAL COMPONENT PERFORMANCE. THE INSPECTOR MUST BE EMPOWERED TO IMPLEMENT MODIFICATIONS TO THE SWPPP, IF NEEDED.
- THE SWPPP MUST BE UPDATED EACH TIME THERE ARE SIGNIFICANT MODIFICATIONS TO THE POLLUTION PREVENTION SYSTEM OR A CHANGE OF CONTRACTORS WORKING ON THE PROJECT WHO DISTURBS THE SOIL.
- DISCHARGE OF OIL AND OTHER HAZARDOUS SUBSTANCES INTO THE STORM WATER IS SUBJECT TO REPORTING AND CLEANUP REQUIREMENTS.
- ONCE THE SITE REACHES FINAL STABILIZATION, THE GENERAL CONTRACTOR MUST FILE A NOTICE OF TERMINATION (NOT).
- THE SWPPP INTENDS TO CONTROL WATER-BORNE AND LIQUID POLLUTANT DISCHARGES BY THE COMBINATION OF INTERCEPTION, INFILTRATION, AND CONTAINMENT. THE GENERAL CONTRACTOR AND SUBCONTRACTORS IMPLEMENTING THE SWPPP MUST REMAIN ALERT TO THE NEED TO PERIODICALLY REFINE AND UPDATE THE SWPPP IN ORDER TO ACCOMPLISH THE INTENDED GOALS.
- THE SWPPP MUST BE AMENDED AS NECESSARY DURING THE COURSE OF CONSTRUCTION TO KEEP IT CURRENT WITH THE POLLUTANT MEASURES UTILIZED AT THE SITE.
- A RECORD OF DATES WHEN MAJOR ACTIVITIES OCCUR, WHEN CONSTRUCTION ACTIVITIES TEMPORARILY OR PERMANENTLY CEASE ON A PORTION OF THE SITE, AND WHEN STABILIZATION MEASURES ARE INITIATED MUST BE MAINTAINED UNTIL THE NOT IS FILED.

FORM BDE 2342 (STORM WATER POLLUTION PREVENTION PLAN) IS INCLUDED WITH THE SPECIAL PROVISIONS. THIS FORM, IN CONJUNCTION WITH THE EROSION CONTROL AND DRAINAGE PLANS AND NOTES INCLUDED HEREIN WILL SERVE AS THE SWPPP FOR THIS PROJECT. THE CONTRACTOR WILL SUPPLY APPLICABLE FORMS, CERTIFICATION STATEMENTS, AND SUPPORTING DATA REQUIRED FOR THE SWPPP TO THE ENGINEER CONCURRENTLY WITH THE CONTRACTOR'S SUBMISSION TO THE IEPA FOR THE NOI.

THE CONTRACTOR IS RESPONSIBLE FOR OBTAINING THE NOI AND ASSEMBLING ALL NECESSARY FEES AND INFORMATION FOR THE PERMIT APPLICATION, INCLUDING DRAFTING AN EROSION CONTROL PLAN TO BE APPROVED BY THE ENGINEER PRIOR TO SUBMITTAL IF DIFFERENT THAN THE STORM WATER POLLUTION PREVENTION PLAN AND THE FOLLOWING NOTES AND EROSION CONTROL PLANS.

THE CONTRACTOR WILL INSPECT THE PROJECT DAILY DURING CONSTRUCTION ACTIVITIES. INSPECTION SHALL ALSO BE DONE WEEKLY AND AFTER RAINS OF 1/2 INCH OR GREATER OR EQUIVALENT SNOWFALL AND DURING THE WINTER SHUTDOWN PERIOD. INSPECTION REPORTS SHALL BE FILED AS DESCRIBED IN THE SWPPP. A COPY OF CURRENT INSPECTION REPORTS WILL BE PROVIDED TO THE ENGINEER ON A WEEKLY BASIS AND AFTER EACH EVENT REQUIRING A REPORT.

TEMPORARY EROSION CONTROL

TEMPORARY EROSION CONTROL MEASURES SHALL BE CONSTRUCTED IN ACCORDANCE WITH SECTION 280 OF THE IDOT STANDARD SPECIFICATIONS. TEMPORARY EROSION CONTROL MEASURES INCLUDE TEMPORARY DITCH CHECKS, PERIMETER EROSION BARRIER, INLET AND PIPE PROTECTION, TEMPORARY SEEDING, AND ANY OTHER TEMPORARY EROSION CONTROL MEASURE NEEDED TO LIMIT THE AMOUNT OF SOIL EROSION AND SEDIMENTATION DURING CONSTRUCTION. TEMPORARY EROSION CONTROL MEASURES SHALL BE CONSIDERED INCIDENTAL TO THE PROJECT UNLESS OTHERWISE NOTED.

ALL ITEMS SHALL BE CONSTRUCTED AS SHOWN ON STANDARD 280001 AND AS DIRECTED BY THE ENGINEER. MAINTENANCE AND CLEANING OF THE EROSION CONTROL ITEMS SHALL BE INCLUDED IN THE RESPECTIVE EROSION CONTROL PAY ITEM.

ALL EROSION CONTROL ITEMS FURNISHED SHALL BE SPECIFICALLY RECOMMENDED BY THE MANUFACTURER FOR THE USE SPECIFIED IN THE PLAN. PRIOR TO THE APPROVAL AND USE OF THE PRODUCT, THE CONTRACTOR SHALL PROVIDE MANUFACTURER INSTALLATION PROCEDURES TO FACILITATE THE ENGINEER IN CONSTRUCTION INSPECTION.

TEMPORARY DITCH CHECKS SHALL BE LOCATED AT EVERY 1-1/2 FEET FALL IN DITCH GRADE OR EVERY 100' - WHICHEVER OCCURS FIRST.

STRAW BALES AND HAY BALES WILL NOT BE PERMITTED FOR DITCH CHECKS. DITCH CHECKS CAN BE COMPOSED OF AGGREGATE, SILT PANELS, ROLLED EXCELSIOR, URETHANE FOAM/GEOTEXTILE (SILT WEDGES), AND OR ANY OTHER MATERIAL APPROVED BY THE ENGINEER.

TEMPORARY EROSION CONTROL SEEDING SHALL BE APPLIED AT A RATE OF 100 LBS/ACRE.

SEDIMENT COLLECTED DURING CONSTRUCTION BY THE VARIOUS TEMPORARY EROSION SYSTEMS SHALL BE DISPOSED OF ON THE SITE ON A REGULAR BASIS AND AS DIRECTED BY THE ENGINEER. THE COST OF THIS MAINTENANCE SHALL BE CONSIDERED INCIDENTAL TO THE RESPECTIVE EROSION CONTROL ITEM.

THE EROSION CONTROL SYSTEM SHALL BE MAINTAINED THROUGHOUT THE COURSE OF THE PROJECT. AFTER EACH SIGNIFICANT RAINFALL EVENT, THE CONTRACTOR SHALL CHECK THE CONDITION OF THE EROSION CONTROL SYSTEM AND CORRECT DEFICIENCIES. THIS SHALL INCLUDE, BUT NOT BE LIMITED TO CORRECTING IMPROPER INSTALLATION AND REPAIRING OF THE EROSION CONTROL SYSTEM, REMOVAL OF TRAPPED SEDIMENT, AND CLEANING OF SILT FILTER FENCE AND ALL ROADWAY AND DRIVEWAY CULVERTS. THE COST OF MAINTAINING THE EROSION CONTROL SYSTEM SHALL BE INCLUDED IN THE PAY ITEM PRICE FOR EROSION CONTROL AND WILL NOT BE PAID FOR.

TEMPORARY EROSION CONTROL SYSTEMS SHALL BE LEFT IN PLACE WITH PROPER MAINTENANCE UNTIL PERMANENT EROSION CONTROL IS IN PLACE AND WORKING PROPERLY AND ALL PROPOSED TURF AREAS ARE SEEDING AND ESTABLISHED.

ONCE PERMANENT EROSION CONTROL SYSTEMS AS PROPOSED IN THE PLANS ARE FUNCTIONAL AND ESTABLISHED, TEMPORARY ITEMS SHALL BE REMOVED AND DISTURBED AREAS RESEEDED.

THE CONTRACTOR SHALL INSTALL PERMANENT EROSION CONTROL SYSTEMS AND SEEDING WITHIN A TIME FRAME SPECIFIED HEREIN AND AS DIRECTED BY THE ENGINEER, THEREFORE MINIMIZING THE AMOUNT OF AREA SUSCEPTIBLE TO EROSION AND REDUCING THE AMOUNT OF TEMPORARY SEEDING. THE ENGINEER WILL DETERMINE IF ANY TEMPORARY EROSION CONTROL SYSTEMS SHOWN IN THE PLAN CAN BE DELETED AND IF ANY ADDITIONAL TEMPORARY EROSION CONTROL SYSTEMS, WHICH ARE NOT INCLUDED IN THIS PLAN, SHALL BE ADDED.

EROSION CONTROL ITEMS TO BE REMOVED FROM THE SITE AND BECOME PROPERTY OF THE CONTRACTOR.

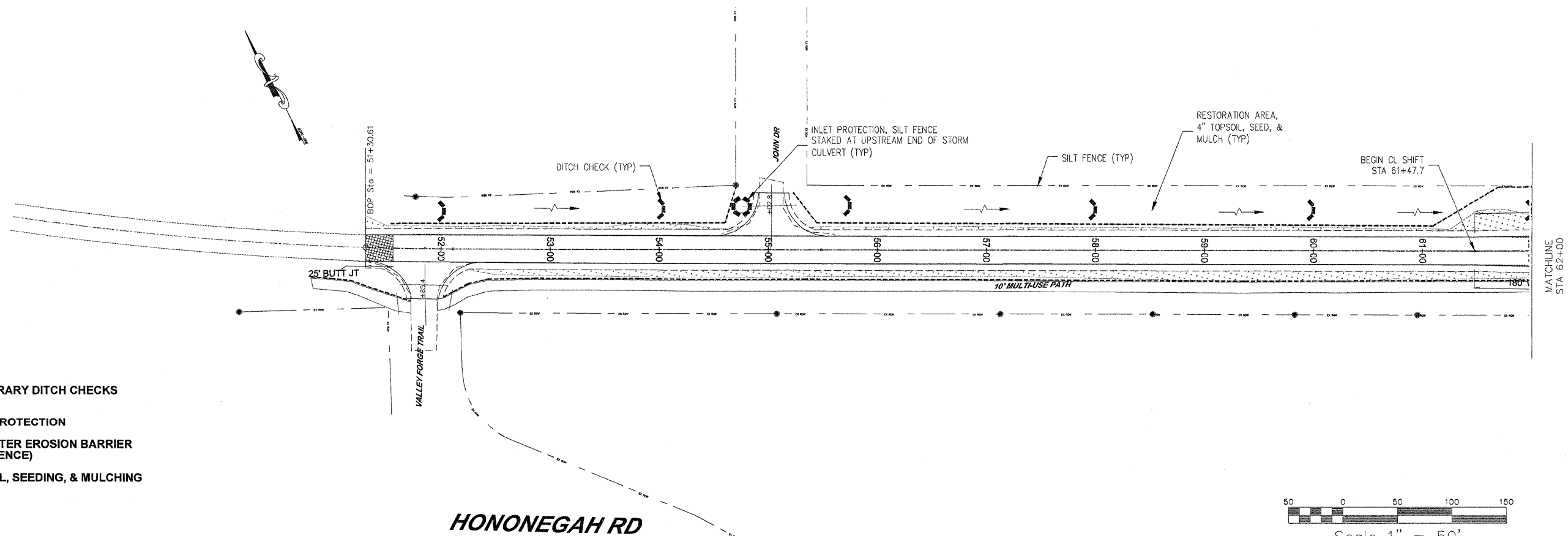
SEEDING OF DISTURBED AREAS

DISTURBED AREAS ARE LOCATIONS WHERE THE CONTRACTOR'S OPERATIONS HAVE DAMAGED EXISTING GROUND COVER AND/OR TOPSOIL OUTSIDE OF THE LIMITS OF TOPSOIL PLACEMENT.

THE FINAL 4" OF ANY DISTURBED AREA MUST BE A COHESIVE SOIL CAPABLE OF SUPPORTING VEGETATION. FERTILIZER HAVING AN ANALYSIS OF 10-10-10 SHALL BE APPLIED AT A RATE OF 100LBS/ACRE TO DISTURBED AREAS AND INCORPORATED INTO THE SEEDBED PRIOR TO SOWING THE SEED AND SHALL BE CONSIDERED INCIDENTAL TO THE SEEDING.

THE CONTRACTOR SHALL SEED ALL DISTURBED AREAS WITH SEEDING, CLASS 2A, IN ACCORDANCE WITH THE IDOT STANDARD SPECIFICATION OR AS APPROVED BY THE ENGINEER.

SEEDING OF DISTURBED AREAS IS INCIDENTAL TO EROSION CONTROL AND NO ADDITIONAL COMPENSATION IS ALLOWED.



LEGEND

- TEMPORARY DITCH CHECKS
- INLET PROTECTION
- PERIMETER EROSION BARRIER (SILT FENCE)
- TOPSOIL, SEEDING, & MULCHING

