

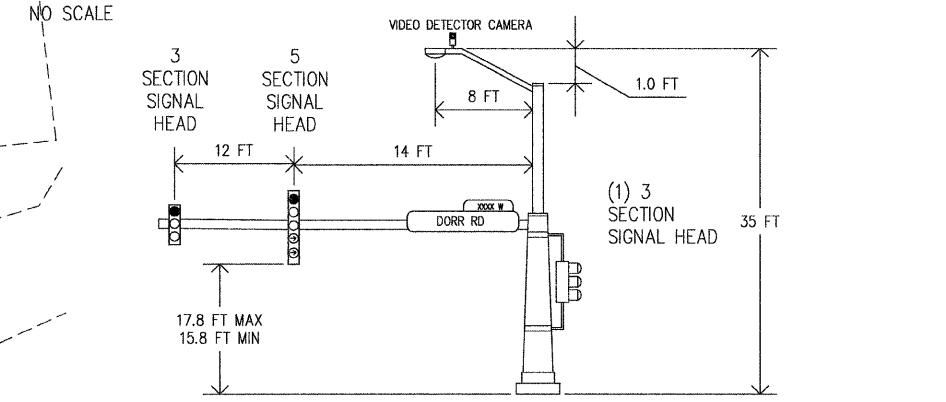


TRAFFIC SIGNAL GENERAL NOTES

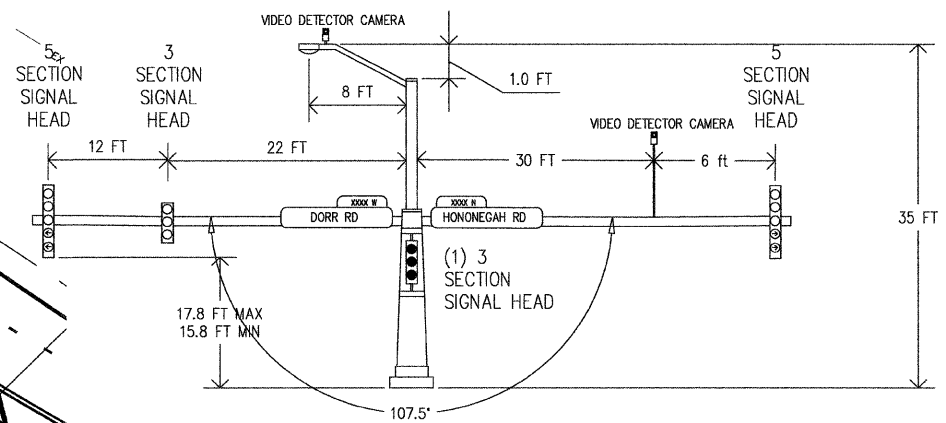
THE EXACT LOCATION OF THE MAST ARM ASSEMBLY AND POLE AND DETECTOR LOOPS SHALL BE DETERMINED IN THE FIELD BY THE ENGINEER.
ALL SIGNAL CABLE SHALL BE MARKED WITH ELECTRIC TAPE FOR IDENTIFICATION PURPOSES. THIS IDENTIFICATION SHALL BE DONE AT THE CONTROLLER AND IN THE SIGNAL HEAD.
CONTRACTOR MUST SUBMIT SHOP DRAWINGS FOR MAST ARM ASSEMBLIES CONSISTENT WITH I.D.O.T. PRE-APPROVED DESIGNS FOR LOADINGS REPRESENTED ON PLANS.
LIGHT FIXTURES SHALL BE MOUNTED AT 35'-0" HEIGHT ON 8' ARMS.
ALL TRAFFIC SIGNAL AND HIGHWAY LIGHTING WORK AND MATERIAL SHALL CONFORM TO DIVISION 800 OF THE CURRENT STANDARD SPECIFICATIONS FOR ROAD AND BRIDGE CONSTRUCTION.
EACH LUMINAIRE SHALL BE SUPPLIED WITH AN INTEGRAL PHOTOCCELL SENSOR CONTROL.

- (A) STA. 100+53.23, 38' LT
CONC FDN TY E 30D, 10 FT
STEEL COMB MAST ARM ASSEMBLY & POLE, 28 FT
LUMINAIRE, SV HORI MT PC 400W, 8' MA, 35' MTG HT, 1 EA
- (B) STA. 101+70.42, 35' RT
CONC FDN TY E 36D, 14 FT
STEEL COMB DUAL MAST ARM ASSEMBLY & POLE, 36 FT & 38 FT
LUMINAIRE, SV HORI MT PC 400W, 8' MA, 35' MTG HT, 1 EA
- (C) STA. 102+09.34, 43' LT
CONC FDN TY A, 3 FT
TRAFFIC SIGNAL POST GALV, 16 FT

MAST ARM EQUIPMENT MOUNTING DETAILS



(A) MAST ARM LENGTH: 28 FT
HONONEGAH ROAD, NORTHWEST CORNER (WB TRAFFIC)



(B) MAST ARM LENGTH: 36 FT (FACING HONONEGAH RD) & 38 FT (FACING DORR RD)
HONONEGAH ROAD, SOUTHEAST CORNER (EB TRAFFIC)

