

F.A.U. ROUTE	SECTION	COUNTY	TOTAL SHEETS	SHEET NUMBER
N/A	09-00002-00-SW	ST. CLAIR	8	1
FEDERAL AID PROJECT			CONTRACT 97449	

STATE OF ILLINOIS
DEPARTMENT OF TRANSPORTATION
DIVISION OF HIGHWAYS

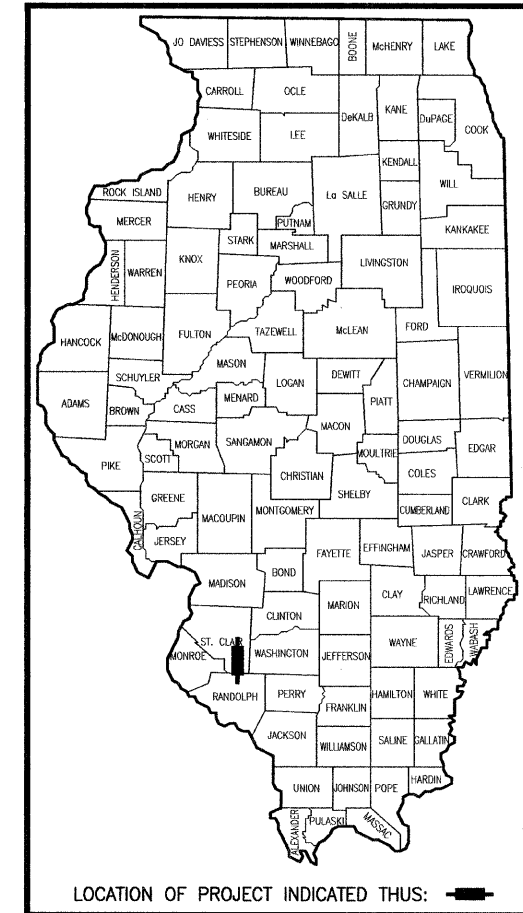
PLANS FOR PROPOSED
LOCAL AGENCY PROJECT

SAFE ROUTES TO SCHOOL
HANFT STREET IMPROVEMENTS
SECTION 09-00002-00-SW

PROJECT NO. SRTS-4008 (112)
VILLAGE OF NEW ATHENS, ILLINOIS
ST. CLAIR COUNTY
JOB NO. C-40-040-08

INDEX OF SHEETS

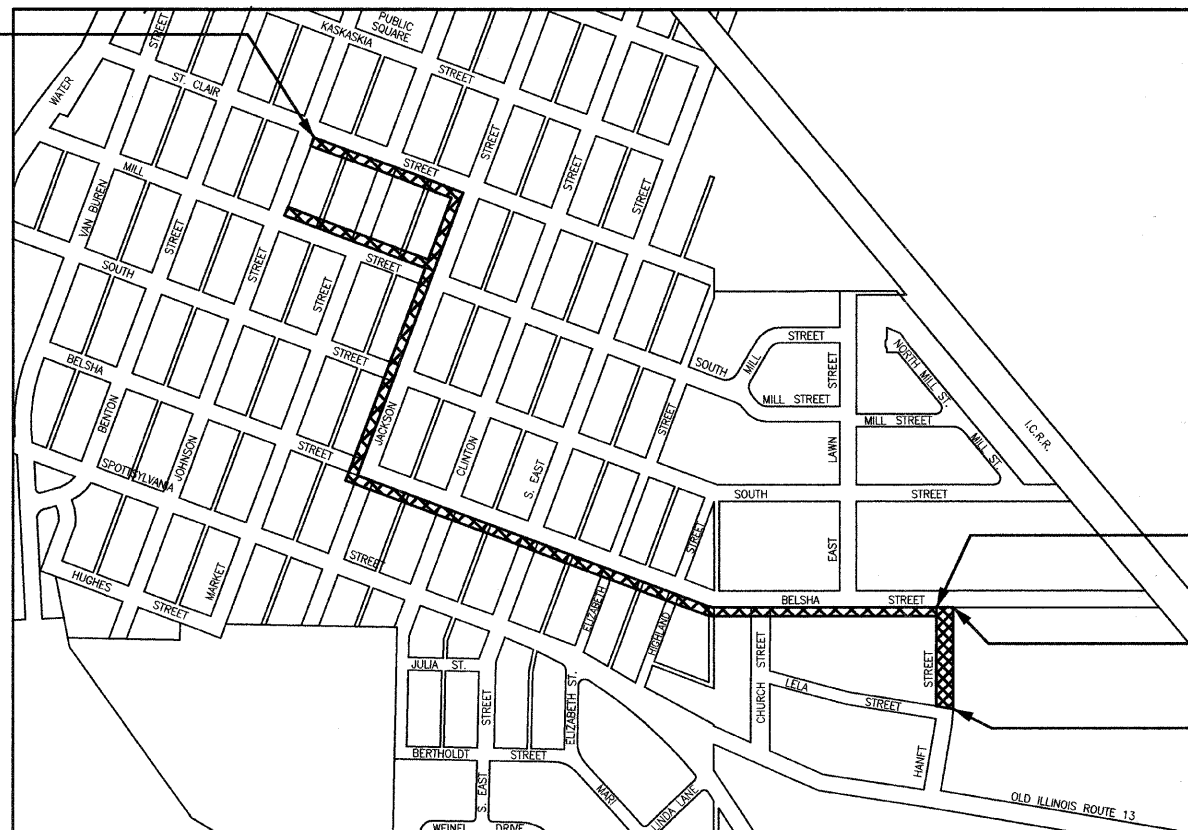
1. COVER SHEET
2. SUMMARY OF QUANTITIES, GENERAL NOTES & DETAILS
3. TYPICAL SECTIONS & SCHEDULES
4. ROADWAY PLAN & PROFILE
5. RAMP & SIDEWALK REPLACEMENT MAP
- 6.-8. CROSS SECTIONS



SCALES:

PLAN	0 20 40
PROFILE HORIZ.	0 20 40
PROFILE VERT.	0 5 10
CROSS SECTION HORIZ.	0 10 20
CROSS SECTION VERT.	0 5 10

BEGIN MISC. RAMP AND
SIDEWALK REPLACEMENT



END MISC. RAMP AND
SIDEWALK REPLACEMENT

END HANFT ST. CONSTRUCTION
STA. 14+28.03

BEGIN HANFT ST. CONSTRUCTION
STA. 10+17.29

LOCATION MAP
NOT TO SCALE

APPLICABLE HIGHWAY STANDARDS

424001-05	701901-01
602301-02	720006-02
606001-04	720011-01
701801-04	B.L.R. 17-4
	B.L.R. 18-5

ELECTRIC & GAS

Ameren IP
1050 West Boulevard
P.O. Box 428
Belleville, IL 62221
1-618-236-6271

TELEPHONE

AT&T
203 Goethe
Collinsville, IL 62234
Attn: Janet Burns
1-618-346-6494

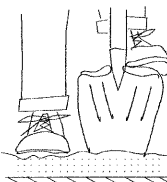
CABLE

Charter Communications
823 East Broadway
Sparto, IL 62286
1-618-443-3019

WATER, SANITARY & STORM SEWERS

Village of New Athens
905 Spotsylvania Street
New Athens, IL 62264
1-618-475-2144

HOLD IT ! CALL BEFORE YOU DIG !
Phone J.U.L.I.E.



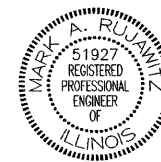
The owner would like to remind you that underground utility facilities can be damaged by shovel blades or other digging equipment. You can prevent damage or possible personal danger by phoning 800/892-0123 at least 48 hours before you dig. That's the toll-free number for "J.U.L.I.E.", which stands for Joint Utilities Location Information for Excavators.

If there are any pipes, cables, lines or mains in the excavation area, utility personnel will be out to mark the facilities so you can work around them.

Toll Free 800/892-0123

HANFT STREET: 410.74 FT. = 0.078 MILES
MISC. RAMP AND SIDEWALK REPLACEMENT
GROSS LENGTH: 5190 FT. = 0.983 MILES
NET LENGTH: 658 FT. = 0.125 MILES
TOTAL NET LENGTH: 1,068.74 FT. = 0.202 MILES

[Symbol] = IMPROVEMENT AREA/ACCESSIBLE ROUTE



Mark A. Rujawitz
Mark A. Rujawitz
6/7/2010
Date of Signing
11/30/2011
Date of License Expiration



PREPARED BY:
RHUTASEL and ASSOCIATES, INC.
CONSULTING ENGINEERS • LAND SURVEYORS

CORPORATE OFFICE: 4 INDUSTRIAL DRIVE, FREDERICK, ILLINOIS 62243 (618) 538-3178
REGIONAL OFFICE: 201 SOUTH LOCUST STREET, CENTRALIA, ILLINOIS 62801 (618) 532-1992

STATE OF ILLINOIS
DEPARTMENT OF TRANSPORTATION

APPROVED: 6-7-10 DATE
Jay Krasner
VILLAGE PRESIDENT, VILLAGE OF NEW ATHENS

PASSED: 6-8-10 DATE
J. Smith
DISTRICT EIGHT ENGINEER OF LOCAL ROADS & STREETS

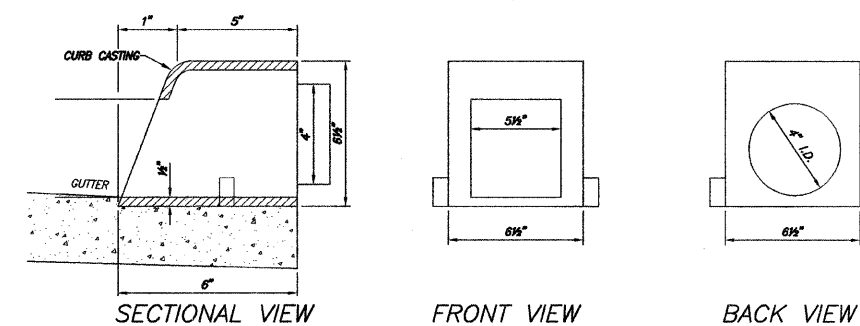
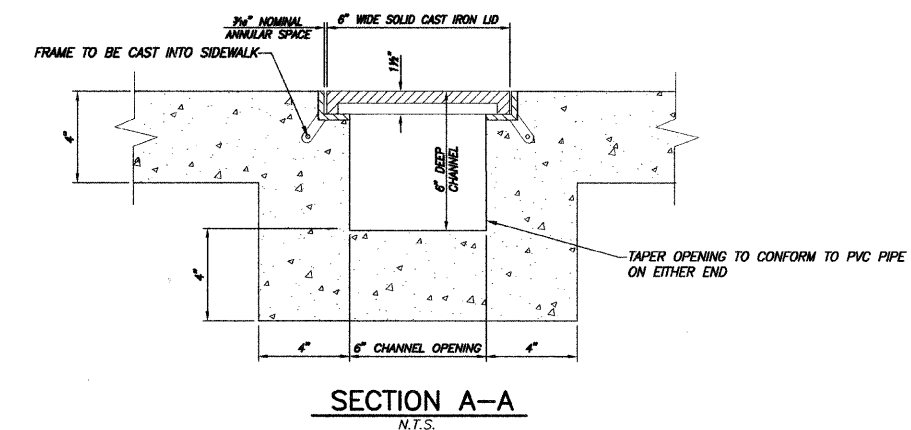
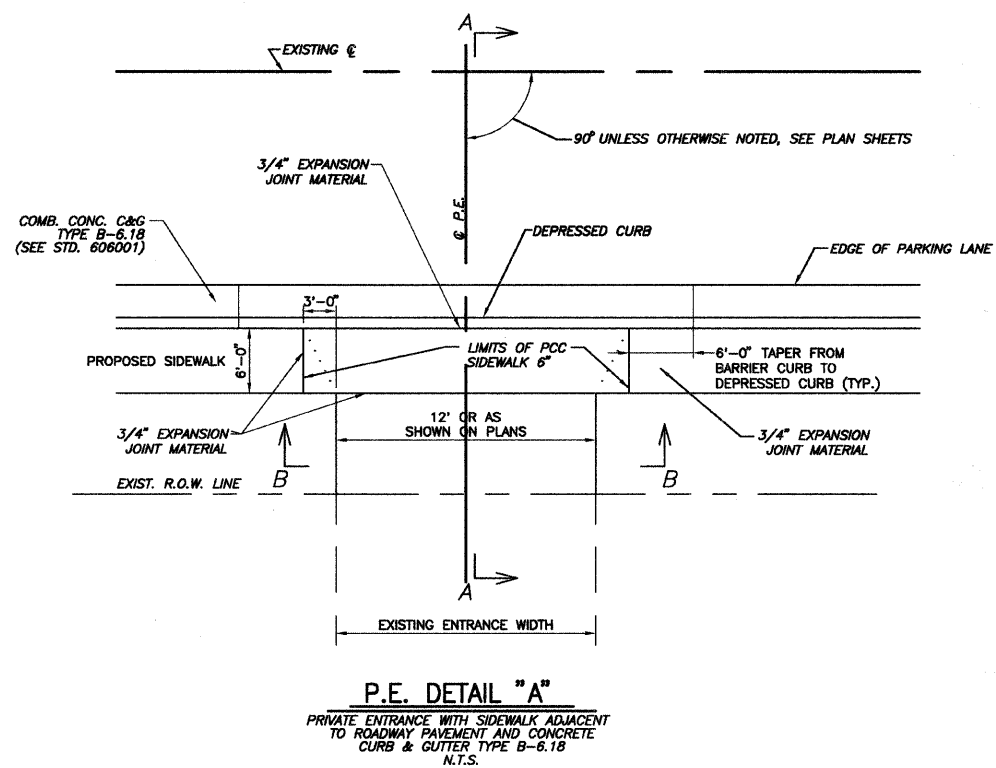
RELEASING FOR BID
BASED ON LIMITED
REVIEW: 6-8-10 DATE
Mary C. Samiean
DEPUTY DIRECTOR OF HIGHWAYS, REGION FIVE ENGINEER

PRINTED BY AUTHORITY OF THE STATE OF ILLINOIS

F.A.U. ROUTE	SECTION	COUNTY	TOTAL SHEETS	SHEET NUMBER
N/A	09-00002-00-SW	ST. CLAIR	8	2
FEDERAL AID PROJECT			CONTRACT 97449	

SUMMARY OF QUANTITIES

CODE NUMBER	ITEM DESCRIPTION	UNIT	QUANTITY
20100110	TREE REMOVAL (6 TO 15 UNITS DIAMETER)	UNIT	26
20100210	TREE REMOVAL (OVER 15 UNITS DIAMETER)	UNIT	40
25000100	SEEDING, CLASS 1	ACRE	0.1
40200100	AGGREGATE SURFACE COURSE, TYPE A	TON	34
40200800	AGGREGATE SURFACE COURSE, TYPE B	TON	21
42400100	PORTLAND CEMENT CONCRETE SIDEWALK 4 INCH	SQ FT	4,498
42400300	PORTLAND CEMENT CONCRETE SIDEWALK 6 INCH	SQ FT	729
42400800	DETECTABLE WARNINGS	SQ FT	288
44000600	SIDEWALK REMOVAL	SQ FT	1,788
50105220	PIPE CULVERT REMOVAL	FOOT	117
542D0213	PIPE CULVERTS, CLASS D, TYPE 1 8"	FOOT	24
550B0050	STORM SEWER, CLASS B, TYPE 1, 12"	FOOT	41
60238710	INLETS, TYPE A, WITH SPECIAL GRATE	EACH	1
60265700	VALVE VAULTS TO BE ADJUSTED	EACH	2
60500060	REMOVING INLETS	EACH	1
60604400	COMBINATION CONCRETE CURB AND GUTTER, TYPE B-6.18	FOOT	410
67100100	MOBILIZATION	L SUM	1
70101700	TRAFFIC CONTROL AND PROTECTION	L SUM	1
72000100	SIGN PANEL - TYPE 1	SQ FT	22
72900100	METAL POST - TYPE A	FOOT	22
X5030400	SIDEWALK FLOOR DRAINS	EACH	1



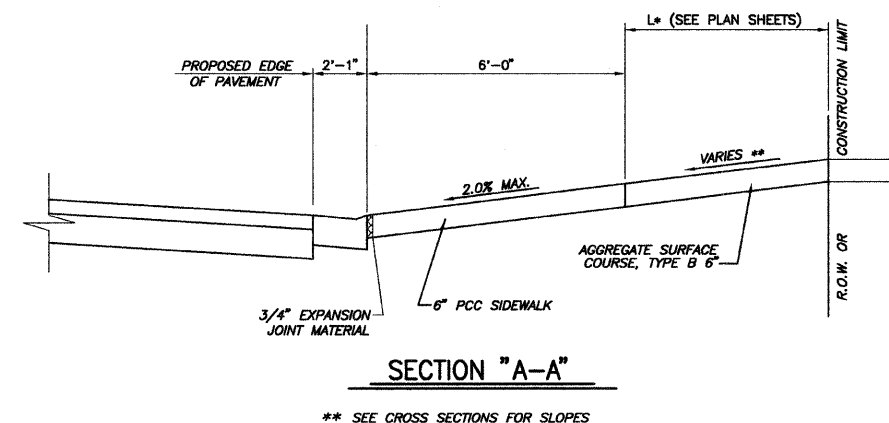
STORM WATER CURB OPENING
N.T.S.

GENERAL NOTES

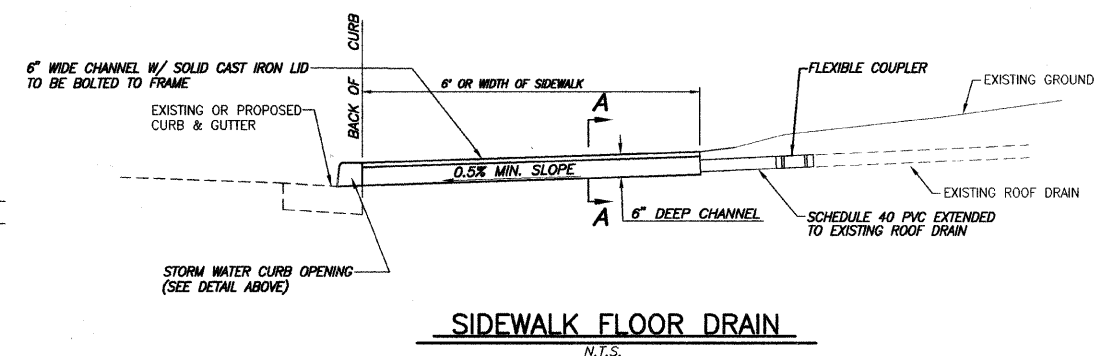
- ALL CONSTRUCTION SHALL BE ACCORDING TO THE ILLINOIS DEPARTMENT OF TRANSPORTATION STANDARD SPECIFICATIONS FOR ROAD AND BRIDGE CONSTRUCTION, ADOPTED JANUARY 1, 2007.
- UNDERGROUND FACILITIES, STRUCTURES AND UTILITIES HAVE BEEN PLOTTED FROM AVAILABLE SURVEYS AND RECORDS. THEIR LOCATIONS MUST BE CONSIDERED TO BE APPROXIMATE ONLY. IT IS POSSIBLE THERE MAY BE OTHERS, THE EXISTENCE OF WHICH IS NOT PRESENTLY KNOWN OR SHOWN. IT IS THE CONTRACTOR'S RESPONSIBILITY TO DETERMINE THEIR EXISTENCE AND EXACT LOCATION AND TO AVOID DAMAGE THERETO. FIELD LOCATIONS OF UNDERGROUND FACILITIES MAY BE OBTAINED BY CALLING THE J.U.L.I.E. SYSTEM AT 800-892-0123 AND PROVIDING 48 HOURS ADVANCE NOTICE. NON-J.U.L.I.E. MEMBERS MAY BE CONTACTED DIRECTLY. AGENCIES KNOWN TO HAVE FACILITIES WITHIN THE PROJECT LIMITS ARE LISTED ON THE COVER SHEET.
- THE UTILITY COMPANIES LISTED ON THE COVER SHEET MAY HAVE FACILITIES LOCATED WITHIN THE LIMITS OF CONSTRUCTION WHICH MAY REQUIRE ADJUSTMENT, RELOCATION OR REMOVAL. IT IS UNDERSTOOD AND AGREED THAT THE CONTRACTOR HAS TAKEN THIS FACT INTO CONSIDERATION IN PREPARING HIS/HER BID AND NO ADDITIONAL COMPENSATION WILL BE ALLOWED FOR ANY DELAYS OR INCONVENIENCE CAUSED BY SAME.
- THE COST FOR FURNISHED EXCAVATION AND EARTH EXCAVATION NECESSARY TO COMPLETE THE WORK AS SHOWN ON THE PLANS AND AS DIRECTED BY THE ENGINEER SHALL BE INCLUDED IN THE COST OF THE CONTRACT. THE TOP 6 INCHES OF ALL NECESSARY BACKFILL SHALL BE FREE FROM ANY ROCKS OR FOREIGN DEBRIS.
- ALL PROPOSED EMBANKMENT SHALL BE BENCHED INTO THE EXISTING SLOPES TO THE SATISFACTION OF THE ENGINEER.
- THE CONTRACTOR SHALL VERIFY ALL DIMENSIONS AND CONDITIONS IN THE FIELD PRIOR TO ORDERING OF MATERIALS AND CONSTRUCTION.
- ALL EARTH SURFACES DISTURBED BY CONSTRUCTION SHALL BE SEEDED WITH CLASS 1 SEEDING WHICH PRICE SHALL INCLUDE FERTILIZER NUTRIENTS, MULCH, AND ALL NECESSARY INCIDENTAL WORK AS DIRECTED BY THE ENGINEER. SEEDING OUTSIDE RIGHT-OF-WAY WILL BE AT THE CONTRACTOR'S EXPENSE.
- IF ASH TREES ARE REMOVED ON THE PROJECT, THE CONTRACTOR SHALL BECOME FAMILIAR WITH AND COMPLY WITH MEASURES SPECIFIED BY THE ILLINOIS DEPARTMENT OF AGRICULTURE (IDOA) TO PREVENT THE SPREAD OF THE EMERALD ASH BORER. THE IDOA INFORMATION FOR ASH TREE REMOVAL CAN BE FOUND ON THE IDOA WEBSITE AT WWW.AGR.STATE.IL.US/EAB.

COMMITMENTS

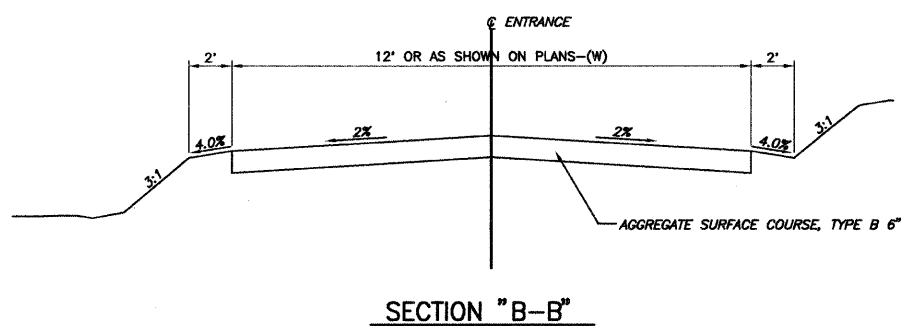
NONE



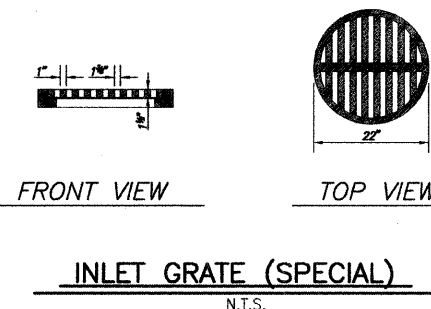
SECTION "A-A"
** SEE CROSS SECTIONS FOR SLOPES



SIDEWALK FLOOR DRAIN
N.T.S.

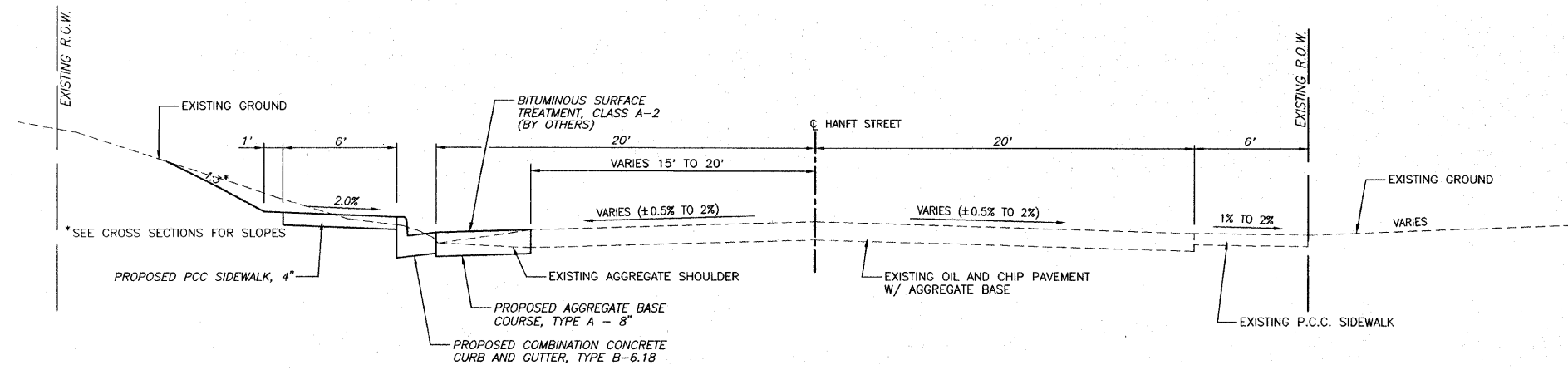


SECTION "B-B"



INLET GRATE (SPECIAL)
N.T.S.

F.A.U. ROUTE	SECTION	COUNTY	TOTAL SHEETS	SHEET NUMBER
N/A	09-00002-00-SW	ST. CLAIR	8	3
FEDERAL AID PROJECT		CONTRACT 97449		



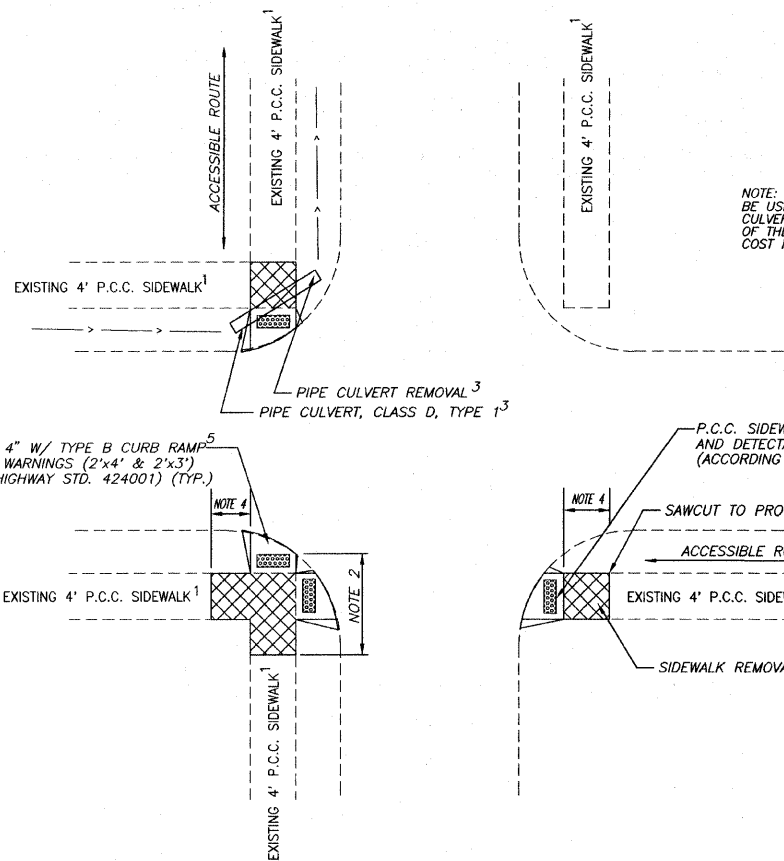
TYPICAL SECTION

N.T.S.
HANFT STREET
STA. 10+17.29 TO 14+28.03

MISCELLANEOUS SIDEWALK RAMP SCHEDULE

LOCATION	SIDEWALK REMOVAL S.F.	P.C.C. SIDEWALK, 4" S.F.	DETECTABLE WARNINGS S.F.	PIPE CULVERT REMOVAL FT.	PIPE CULVERTS* CLASS D, TYPE 1 8" FT.
Belsha & Church St.	70	120	12 (2 @ 2'X3')	—	—
Belsha & Highland St.	16	56	12 (2 @ 2'X3')	5 (8" CLAY)	8
Belsha & Elizabeth St.	68	136	24 (4 @ 2'X3')	7 (8" CLAY)	8
Belsha & East St.	32	156	24 (4 @ 2'X3')	—	—
Belsha & Clinton St.	8	171	24 (4 @ 2'X3')	5 (6" CLAY)	8
Belsha & Jackson St.	35	152	24 (4 @ 2'X3')	—	—
Jackson & South St.	180**	276	24 (4 @ 2'X3')	—	—
Jackson & Mill St.	146	260	24 (4 @ 2'X3')	—	—
Mill & Market St.	102	224	32 (4 @ 2'X4')	—	—
Mill & Johnson St.	56	104	24 (3 @ 2'X4')	—	—
St. Clair & Market St.	40	96	16 (2 @ 2'X4')	—	—
St. Clair & Johnson St.	20	76	16 (2 @ 2'X4')	—	—
TOTAL	773	1,827	256	17	24

* - DITCHES TO BE GRADED AS NECESSARY TO ALLOW FOR POSITIVE DRAINAGE, INCLUDED IN THE COST OF PIPE CULVERTS.
** - REMOVE STUMP ROOTS AS NECESSARY TO CONSTRUCT NEW SIDEWALK. INCLUDED IN COST OF PCC SIDEWALK CONSTRUCTION.



TYPICAL RAMP W/CULVERTS

N.T.S.

MISCELLANEOUS SIDEWALK REPAIR SCHEDULE

LOCATION	SIDEWALK REMOVAL S.F.	P.C.C. SIDEWALK, 4" S.F.	P.C.C. SIDEWALK, 6" S.F.	COMMENTS
#1	96	96	—	EAST OF CHURCH ST.
#2	72	—	72	DRIVEWAY EAST OF CHURCH ST.
#3	108	108	—	BETWEEN HIGHLAND ST. AND ALLEY (DOGHOUSE)
#4	48	—	48	ALLEY BETWEEN ELIZABETH ST. AND HIGHLAND ST.
#5	64	64	—	EAST OF ELIZABETH ST.
#6	28	28	—	WEST OF ELIZABETH ST.
#7	168	168	—	WEST OF EAST ST. (TREE ROOT UPHEAVAL)
#8	70	—	70	DRIVEWAY NORTH OF BELSHA ST.
#9	189	140	49	DRIVEWAY SOUTH OF MILL ST.
#10	60	—	60	ALLEY BETWEEN MARKET ST. AND JOHNSON ST.
TOTAL	903	604	299	

HANFT STREET SIDEWALK SCHEDULE

LOCATION	SIDEWALK REMOVAL S.F.	P.C.C. SIDEWALK, 4" S.F.	DETECTABLE WARNINGS S.F.	P.C.C. SIDEWALK, 6" S.F.	COMMENTS
10+17 TO 11+09, LT.	21	518	8 (2'X4')	—	TYPE B CURB RAMP AT LELA STREET
10+25 TO 10+31, RT.	18	18	8 (2'X4')	—	TYPE B CURB RAMP STA. 10+28 RT.
11+09 TO 11+27, LT.	—	—	—	108	DRIVEWAY STA. 11+18.20
11+27 TO 11+79, LT.	—	310	—	—	
11+79 TO 12+09, LT.	—	—	—	182	DRIVEWAY STA. 11+98.98
12+09 TO 13+41, LT.	—	798	8 (2'X4')	—	TYPE B CURB RAMP STA. 12+78 LT.
11+75 TO 11+81, RT.	18	18	8 (2'X4')	—	TYPE B CURB RAMP STA. 12+78 RT.
13+41 TO 13+64, LT.	—	—	—	140	DRIVEWAY STA. 13+57.70
13+64 TO 14+28, LT.	55	405	—	—	DRIVEWAY NORTH OF BELSHA ST.
TOTAL	112	2,067	32	430	

NOTES:

- 1 - LOCATIONS OF SIDEWALKS ARE SITE SPECIFIC.
- 2 - LENGTH OF RAMP VARIES PER SITE.
- 3 - PIPE CULVERT REMOVAL AND REPLACEMENT AS REQUIRED FOR STREET DRAINAGE.
- 4 - SIDEWALK REMOVAL AND REPLACEMENT ADJACENT TO ACCESSIBLE ROUTE AS NECESSARY TO MEET ADA POLICY.
- 5 - AT MANY LOCATIONS, RAMPS WILL BE FLUSH WITH EXISTING PAVEMENT AND USE OF FLARES WILL NOT BE REQUIRED.

TYPICAL RAMPS

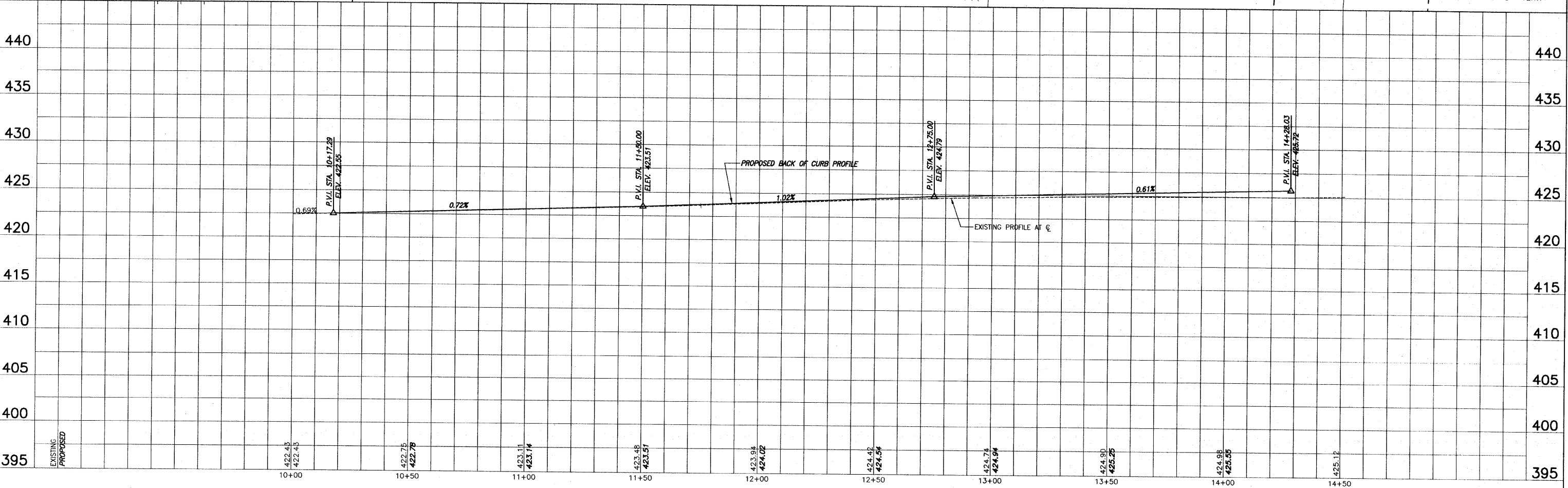
N.T.S.

F.A.U. ROUTE	SECTION	COUNTY	TOTAL SHEETS	SHEET NUMBER
N/A	09-0002-00-SW	ST. CLAIR	8	4
STA. 10+17.29		TO	STA. 14+28.03	
FEDERAL AID PROJECT			CONTRACT 97449	

ALL EXCAVATION AND TRENCH BACKFILL NECESSARY TO COMPLETE STORM SEWER CONSTRUCTION SHALL BE INCLUDED IN THE COST OF THAT ITEM. TRENCH BACKFILL SHALL CONSIST OF EITHER CA-6 OR CA-7 AND SHALL EXTEND TO THE SURFACE OF THE ROAD.

- LEGEND**
- TREE
 - SHRUB
 - ◇ SAPLING
 - MAILBOX
 - STORM INLET
 - CULVERT
 - TELEPHONE PEDESTAL
 - CABLE TV PEDESTAL
 - ELECTRIC PEDESTAL
 - GAS VALVE
 - SIGN
 - STREET SIGN
 - ROADWAY/TRAFFIC SIGN
 - POWER POLE
 - GUY WIRE
 - WATER METER
 - WATER VALVE
 - WARNING POST
 - FENCE
 - SWALE FLOWLINE
 - EDGE OF PAVEMENT
 - OVERHEAD ELECTRIC
 - UNDERGROUND ELECTRIC
 - UNDERGROUND FIBER OPTIC
 - UNDERGROUND TELEPHONE
 - UNDERGROUND GAS MAIN
 - WATER MAIN
 - SANITARY SEWER

NOTE: ALL EXCAVATION AND EMBANKMENT NECESSARY TO COMPLETE THE IMPROVEMENTS AS SHOWN IN THE DRAWINGS AND AS DIRECTED BY THE ENGINEER SHALL BE INCLUDED IN THE COST OF THE CONTRACT.

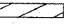




ROADWAY PLAN AND PROFILE SRTS / HANFT STREET IMPROVEMENTS
SECTION 09-0002-00-SW ST. CLAIR COUNTY, ILLINOIS

F.A.U. ROUTE	SECTION	COUNTY	TOTAL SHEETS	SHEET NUMBER
N/A	09-00002-00-SW	ST. CLAIR	8	5
FEDERAL AID PROJECT			CONTRACT 97449	

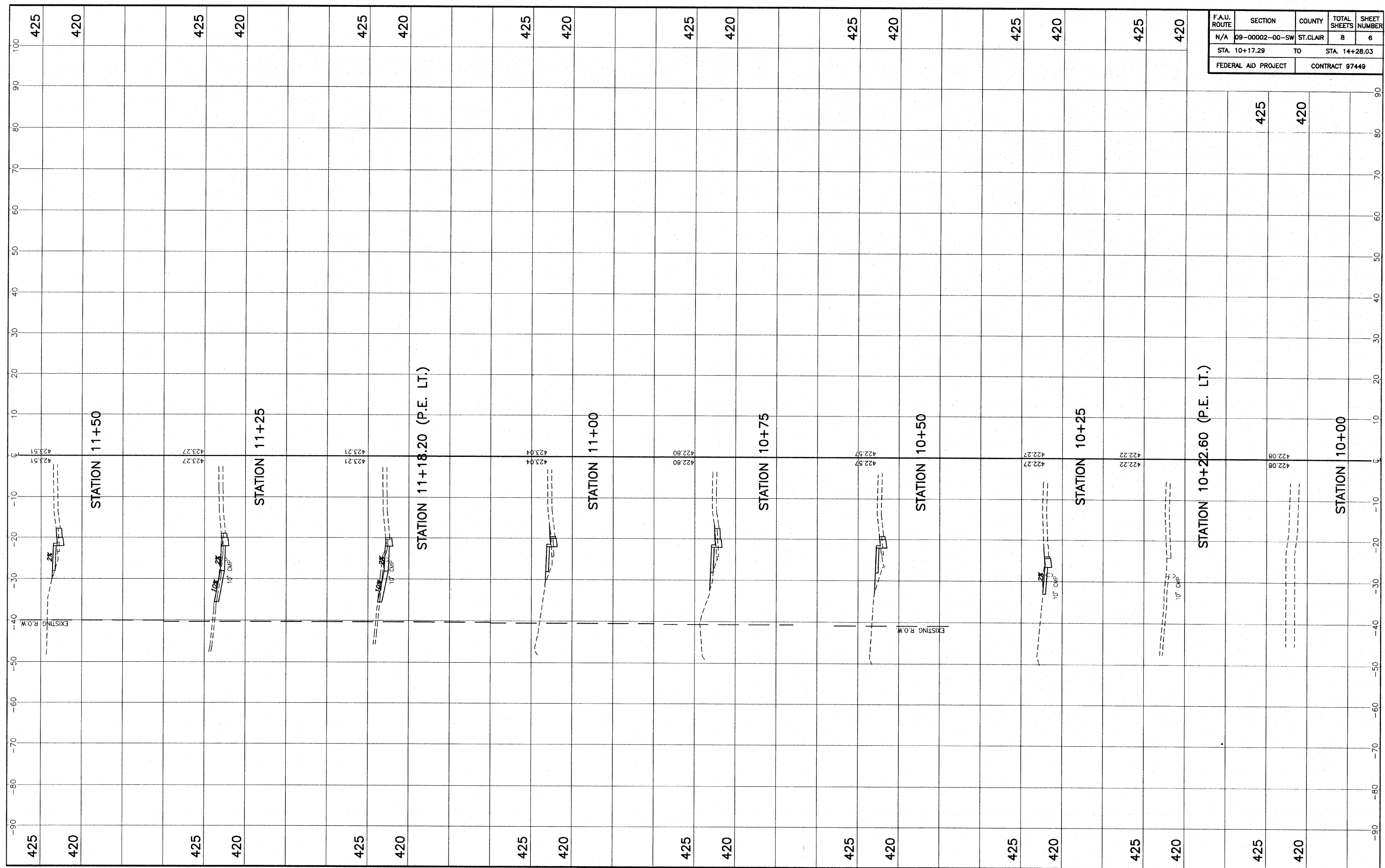


VILLAGE OF NEW ATHENS, ILLINOIS

-  = LOCATION OF ACCESSIBLE ROUTES
-  = LOCATION OF RAMP TO BE CONSTRUCTED OR REPLACED
-  = LOCATION OF SIDEWALK TO BE REPAIRED
(SEE SIDEWALK SCHEDULES)

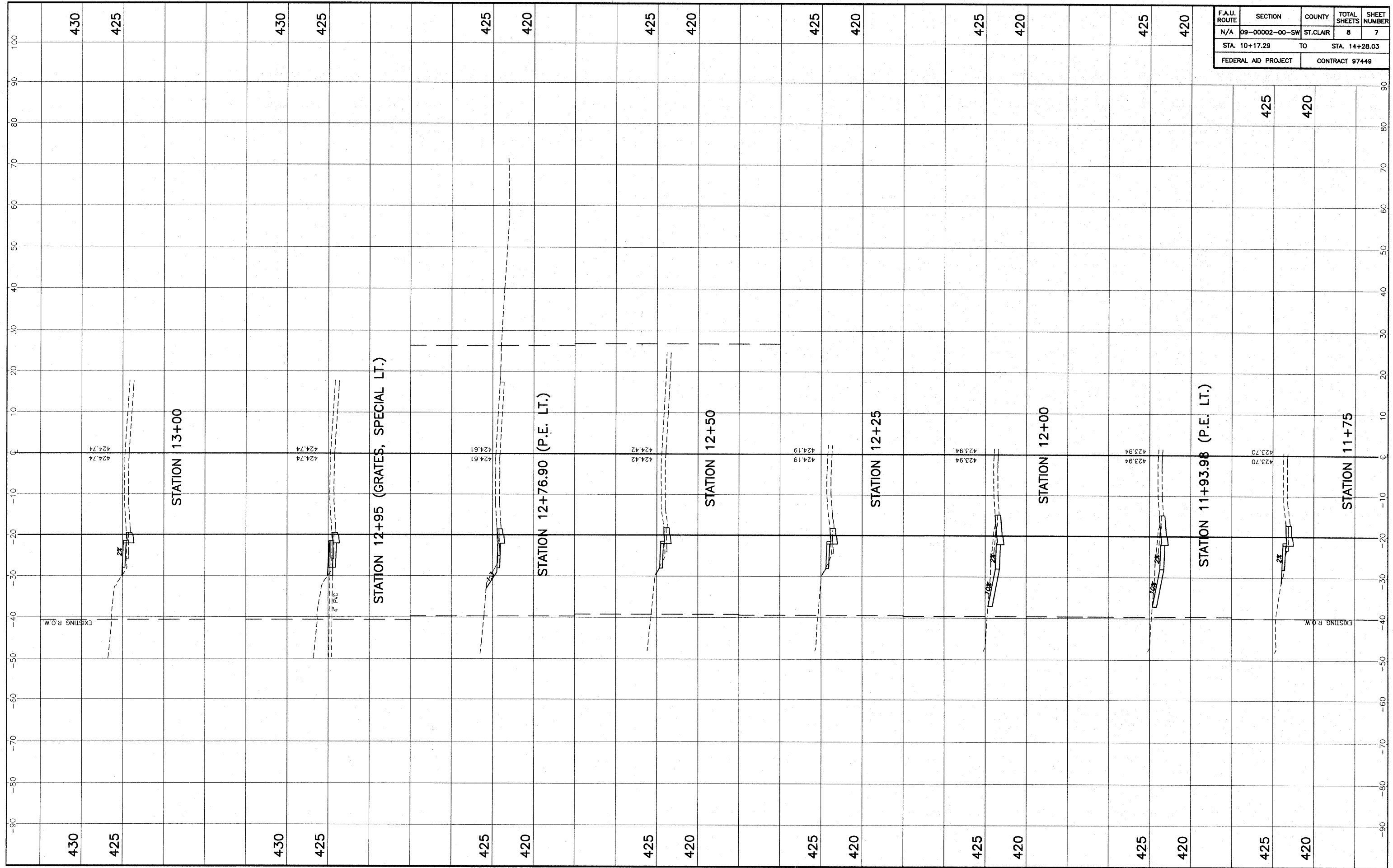


F.A.U. ROUTE	SECTION	COUNTY	TOTAL SHEETS	SHEET NUMBER
N/A	09-00002-00-SW	ST. CLAIR	8	6
STA. 10+17.29		TO	STA. 14+28.03	
FEDERAL AID PROJECT			CONTRACT 97449	



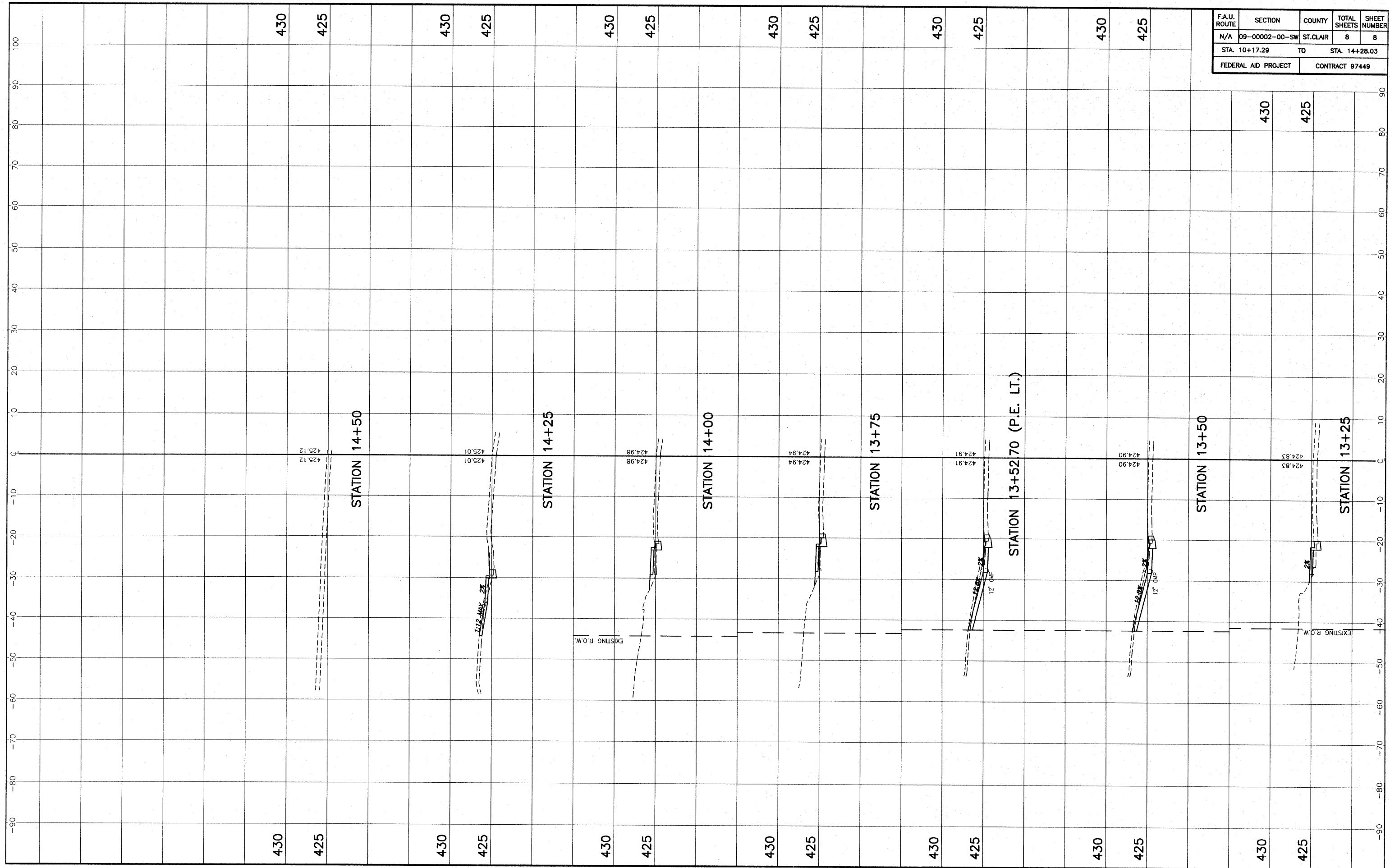
STA. 10+00 - STA. 11+50 CROSS SECTIONS SRTS / HANFT STREET IMPROVEMENTS
SECTION 09-00002-00-SW NEW ATHENS, ILLINOIS

F.A.U. ROUTE	SECTION	COUNTY	TOTAL SHEETS	SHEET NUMBER
N/A	09-00002-00-SW	ST. CLAIR	8	7
STA. 10+17.29		TO		STA. 14+28.03
FEDERAL AID PROJECT			CONTRACT 97449	



STA. 11+75 - STA. 13+00 CROSS SECTIONS SRTS / HANFT STREET IMPROVEMENTS
SECTION 09-00002-00-SW NEW ATHENS, ILLINOIS

F.A.U. ROUTE	SECTION	COUNTY	TOTAL SHEETS	SHEET NUMBER
N/A	09-00002-00-SW	ST. CLAIR	8	8
STA. 10+17.29		TO	STA. 14+28.03	
FEDERAL AID PROJECT		CONTRACT 97449		



STA. 13+25 - STA. 14+50 CROSS SECTIONS SRTS / HANFT STREET IMPROVEMENTS
SECTION 09-00002-00-SW NEW ATHENS, ILLINOIS