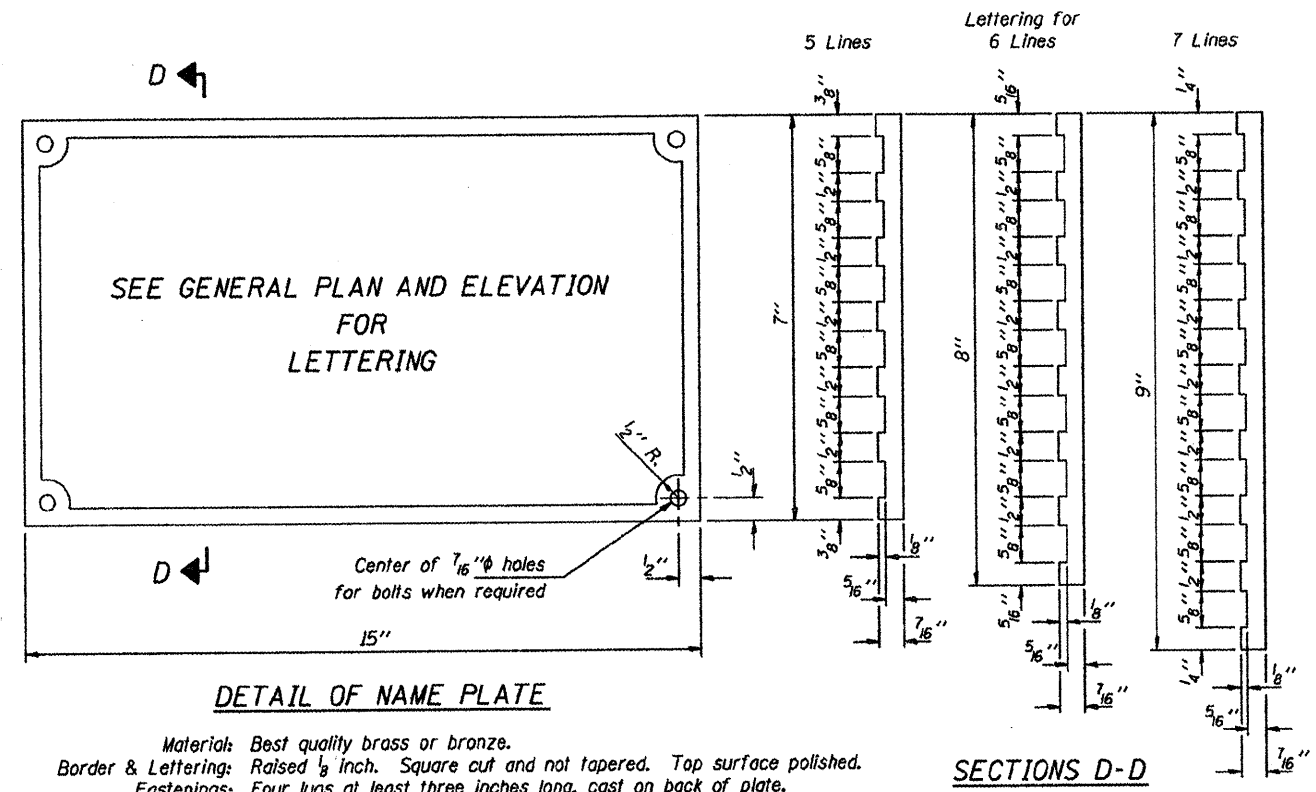
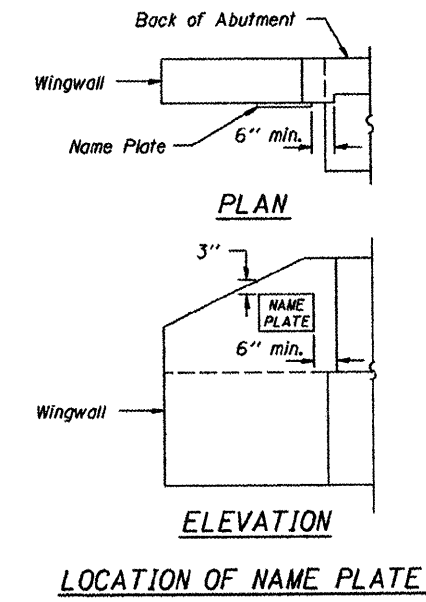


ROUTE	SECTION	COUNTY	TOTAL SHEETS	SHEET NO.
TR 112	09-01162-00-BR	ALEXANDER	10	8
PROJECT NO. BROS-0003(099)			CONTRACT NO. 99424	



Material: Best quality brass or bronze.
 Border & Lettering: Raised $\frac{1}{8}$ inch. Square cut and not tapered. Top surface polished.
 Fastenings: Four lugs at least three inches long, cast on back of plate.



NAME PLATES
 TOWNSHIP ROUTE 112 (WHITNEY HOLLOW ROAD)
 COOPER CREEK
 SECTION 09-01162-00-BR
 ALEXANDER COUNTY
 STRUCTURE NO. 002-3108