

**INDEX OF SHEETS**

SHEET NO.	DESCRIPTION
1	COVER SHEET
2	INDEX OF SHEETS, STANDARDS, AND GENERAL NOTES
3-7	SUMMARY OF QUANTITIES
8-9	TYPICAL SECTIONS PLANS
10	SCHEDULE OF QUANTITIES
11-12	ALIGNMENT, TIES & BENCHMARKS PLAN
13	EXISTING & PROPOSED ROADWAY PLAN / EXISTING PROFILE
14-17B	SUGGESTED STAGES OF CONSTRUCTION AND TRAFFIC CONTROL
18	PROPOSED EROSION CONTROL
19	PROPOSED DRAINAGE PLAN
20-24	PLAT OF HIGHWAYS
25	PROPOSED PAVEMENT MARKING PLAN
26	PROPOSED LANDSCAPING PLAN
27	PROPOSED SIGNING PLAN
28-40	PROPOSED TRAFFIC SIGNAL PLANS
* 41	CULVERT EXTENSION PLAN DETAILS
42	DRIVEWAY DETAILS - DISTANCE BETWEEN R.O.W AND FACE OF CURB & EDGE OF SHOULDER $\geq 15\frac{1}{32}$ (4.5 m) (BD-01)
43	DRIVEWAY DETAILS - DISTANCE BETWEEN ROW AND FACE OF CURB $< 15\frac{1}{32}$ (4.5 m)
44	PAVEMENT PATCHING FOR HMA SURFACED PAVEMENT (BD-22)
45	BUTT JOINT AND HMA TAPER DETAILS (BD-32)
** 46	TRAFFIC CONTROL AND PROTECTION FOR SIDE ROADS, INTERSECTIONS AND, DRIVEWAYS (TC-10)
47	TYPICAL APPLICATIONS RAISED REFLECTIVE PAVEMENT MARKERS (SNOW-PLOW RESISTANT) (TC-11)
48	DISTRICT ONE TYPICAL PAVEMENT MARKINGS (TC-13)
50	SHORT TERM PAVEMENT MARKING LETTERS AND SYMBOLS (TC-16)
51	ARTERIAL ROAD INFORMATION SIGN (TC-22)
52-57	CROSS SECTION PLANS
* 40A & 40B	SHEETS ADDED HERE
** 45A	SHEETS ADDED HERE

STANDARD NO.	DESCRIPTION
000001-08	STANDARD SYMBOLS, ABBREVIATIONS AND PATTERNS
280001-07	TEMPORARY EROSION CONTROL SYSTEMS
442201-03	CLASS C AND D PATCHES
542301-03	PRECAST REINFORCED CONCRETE FLARED END SECTION
542311-07	TRAVERSABLE PIPE GRATE FOR CONCRETE END SECTIONS
701001-02	OFF-ROAD OPERATIONS 2L, 2W, MORE THAN 15'
701201-05	LANE CLOSURE, 2L, 2W, DAY ONLY, FOR SPEEDS > 45 MPH
701301-04	LANE CLOSURE, 2L, 2W, SHORT TIME OPERATIONS
701311-03	LANE CLOSURE, 2L, 2W SLOW, MOVING OPERATIONS- DAY ONLY,
701326-04	LANE CLOSURE, 2L, 2W, PAVEMENT WIDENING FOR SPEEDS > 45 MPH
701701-10	URBAN LANE CLOSURE, MULTILANE INTERSECTION
701901-08	TRAFFIC CONTROL DEVICES
704001-08	TEMPORARY CONCRETE BARRIER
720001-01	SIGN PANEL MOUNTING DETAIL
720006-04	SIGN PANEL ERECTION DETAILS
725001-01	OBJECT AND TERMINAL MARKERS
780001-05	TYPICAL PAVEMENT MARKINGS
782006-01	GUARDRAIL AND BARRIER WALL REFLECTOR MOUNTING DETAILS
805001-01	ELECTRIC SERVICE INSTALLATION DETAILS
814001-03	HANDHOLES
814006-03	DOUBLE HANDHOLES
857001-01	STANDARD PHASE DESIGNATION DIAGRAMS AND PHASE SEQUENCES
862001-01	UNINTERRUPTABLE POWER SUPPLY (UPS)
873001-02	TRAFFIC SIGNAL GROUNDING & BONDING
877001-08	STEEL MAST ARM ASSEMBLY & POLE 16' THROUGH 55'
877011-10	STEEL COMBO MAST ARM ASSEMBLY AND POLE 16' THROUGH 55'
878001-11	CONCRETE FOUNDATION DETAILS
880006-01	TRAFFIC SIGNAL MOUNTING DETAILS
886001-01	DETECTOR LOOP INSTALLATIONS
886006-01	TYPICAL LAYOUTS FOR DETECTOR LOOPS
701502-09	URBAN LANE CLOSURE, 2L, 2W, WITH BIDIRECTIONAL LEFT-TURN LANE

**GENERAL NOTES (CONTINUED)**

WHEN MILLED PAVEMENT IS OPEN TO TRAFFIC THE MAXIMUM GRADE DIFFERENTIAL BETWEEN PASSES OF THE MILLING MACHINE SHALL NOT EXCEED 1 1/2 INCHES (40 MM) WHERE THE SPEED LIMIT IS 45 MPH (45 KM/H) OR LESS AND 1 INCH WHERE THE SPEED LIMIT IS GREATER THAN 45 MPH (45 KM/H). WITH WRITTEN APPROVAL FROM THE ENGINEER, A MAXIMUM GRADE DIFFERENTIAL OF 3 INCHES MAY BE ALLOWED IF THE EDGE OF THE MILLING IS SLOPED A MINIMUM 1:3 (V:H).

BUTT JOINTS WILL BE INSTALLED AT THE ENDS OF ALL RESURFACING (WHERE RESURFACING MEETS EXISTING PAVEMENT), IN ACCORDANCE WITH THE "BUTT JOINT AND HOT-MIX ASPHALT TAPER DETAILS" SHEET INCLUDED IN THE PLANS, UNLESS OTHERWISE SPECIFIED.

THE RESIDENT ENGINEER SHALL CONTACT MR. WALTER CZARNY, IDOT'S AREA TRAFFIC FIELD ENGINEER, VIA EMAIL AT WALTER.CZARNY@ILLINOIS.GOV A MINIMUM OF 2 WEEKS PRIOR TO PLACEMENT OF PERMANENT PAVEMENT MARKING.

BEFORE BEGINNING ANY WORK, THE CONTRACTOR SHALL RETAIN AND RECORD FOR FUTURE REFERENCE, ALL EXISTING PAVEMENT MARKING LINES (AND RAISED REFLECTIVE PAVEMENT MARKERS) IN ORDER THAT THESE LOCATIONS CAN BE RE-ESTABLISHED FOR STRIPING. EXACT LOCATIONS OF ALL PAVEMENT MARKINGS SHALL BE AS DIRECTED BY THE ENGINEER.

IT SHALL BE THE CONTRACTOR'S RESPONSIBILITY TO VERIFY ALL DIMENSIONS AND CONDITIONS EXISTING IN THE FIELD PRIOR TO CONSTRUCTION AND ORDERING OF MATERIALS

THE CONTRACTOR SHALL CONTACT THE DISTRICT ONE TRAFFIC CONTROL SUPERVISOR AT (647) 705-4470, KALPANA KANNAN-HOSADURGA@ILLINOIS.GOV A MINIMUM OF 72 HOURS IN ADVANCE OF BEGINNING WORK.

THE CONTRACTOR SHALL BE REQUIRED TO PROVIDE ACCESS TO ABUTTING PROPERTY AT ALL TIMES DURING THE CONSTRUCTION OF THIS PROJECT.

PRIOR TO EMBANKMENT PLACEMENT, ALL VEGETATION, LOOSE MATERIAL, AND UNSTABLE MATERIAL SHOULD BE REMOVED TO DEPTH ENCOUNTERED AND REPLACED WITH SUITABLE EMBANKMENT MATERIAL. ANY EMBANKMENT WIDENING ON EXISTING SLOPES SHOULD BE BENCHED IN ACCORDANCE WITH ARTICLE 205.04 OF THE STANDARD SPECIFICATIONS FOR ROAD AND BRIDGE CONSTRUCTION.

THE CONTRACTOR SHALL CHECK THE PROPOSED TRAFFIC SIGNAL EQUIPMENT LOCATIONS FOR OVERHEAD UTILITY CONFLICTS, THE CONTRACTOR SHALL COORDINATE ANY CONFLICTS WITH THE UTILITY COMPANIES AND THE RESIDENT ENGINEER BEFORE ORDERING MATERIALS.

ALL PAVEMENT PATCHING LOCATIONS WILL BE DETERMINED IN THE FIELD BY THE ENGINEER.

THE THICKNESS OF THE HMA MIXTURE SHOWN ON THE PLANS IS THE NOMINAL THICKNESS. DEVIATIONS FROM THE NOMINAL THICKNESS WILL BE PERMITTED WHEN SUCH DEVIATIONS OCCUR DUE TO IRREGULARITIES IN THE EXISTING SURFACE OR BASE ON WHICH THE HMA MIXTURE IS PLACED

ALL DROP-OFFS GREATER THAN 18 INCHES MUST BE BACKFILLED AT THE END OF EACH WORK DAY AND EXCAVATED AREA MUST BE PROTECTED WITH DEVICES PLACED AT THE DROP-OFF ELEVATION TO PRESERVE LANE WIDTH. THE REFLECTIVE AREA AND WARNING LIGHT SHALL BE RAISED TO THE ELEVATION ABOVE TRAVELING LANE REQUIRED BY STANDARD 701901.

GEOTECHNICAL FABRIC FOR GROUND STABILIZATION AND/OR AGGREGATE SUBGRADE IMPROVEMENT (CU YD) HAVE BEEN PROVIDED FOR USE AT THE LOCATIONS INDICATED FOR SOILS THAT TEND TO BE UNSTABLE AND/OR UNSUITABLE. THE ACTUAL NEED FOR REMOVAL AND REPLACEMENT WITH ABOVE ITEM WILL BE DETERMINED IN THE FIELD AT THE TIME OF CONSTRUCTION BY THE GEOTECHNICAL ENGINEER. ALL POTENTIALLY UNSTABLE SOILS SHOULD BE TESTED WITH A STATIC OR DYNAMIC CONE PENETROMETER AND TREATED IN ACCORDANCE WITH ARTICLE 301.04 OF THE SSRBC AND IDOT SUBGRADE STABILITY MANUAL. IF UNSTABLE AND/OR UNSUITABLE SOILS ARE NOT ENCOUNTERED, THEN THE QUANTITY SHALL BE DEDUCTED AND NO ADDITIONAL COMPENSATION WILL BE DUE TO THE CONTRACTOR.

ANY AGGREGATE SUBGRADE IMPROVEMENT CONTAMINATED AND/OR DAMAGED BY THE CONTRACTOR'S VEHICLES AND/OR EQUIPMENTS IS TO BE REMOVED AND REPLACED AS DIRECT BY THE ENGINEER AT CONTRACTOR EXPENSE.

**GENERAL NOTES**

THIS PROJECT REQUIRES A US ARMY CORPS OF ENGINEERS (USACE) 404 PERMIT THAT WILL BE SECURED BY THE DEPARTMENT. AS A CONDITION OF THIS PERMIT, THE CONTRACTOR WILL NEED TO SUBMIT AN IN-STREAM WORK PLAN TO THE DEPARTMENT FOR APPROVAL. GUIDELINES ON ACCEPTABLE IN-STREAM WORK TECHNIQUES CAN BE FOUND ON THE USACE WEBSITE. THE USACE DEFINES AND DETERMINES IN-STREAM WORK. THE COST OF ALL MATERIALS AND LABOR NECESSARY TO COMPLY WITH THE ABOVE PROVISIONS TO PREPARE AND IMPLEMENT AN IN-STREAM WORK PLAN WILL NOT BE PAID FOR SEPARATELY, BUT SHALL BE CONSIDERED AS INCLUDED IN THE UNIT BID PRICES OF THE CONTRACT AND NO ADDITIONAL COMPENSATION WILL BE ALLOWED.

BEFORE STARTING ANY EXCAVATION, THE CONTRACTOR SHALL CALL "JULIE" AT 800-892-0123 OR 811 FOR FIELD LOCATIONS OF BURIED ELECTRIC, TELEPHONE AND GAS FACILITIES. (48 HOUR NOTIFICATION IS REQUIRED).

THE CONTRACTOR SHALL COORDINATE CONSTRUCTION ACTIVITIES WITH UTILITY COMPANIES AND WAUCONDA AND FREEMONT TOWNSHIPS

THE CONTRACTOR WILL NOT BE ALLOWED TO SET UP A YARD OR FIELD OFFICE ON STATE PROPERTY WITHOUT WRITTEN PERMISSION FROM THE DEPARTMENT

**GENERAL NOTES**

TWO WEEKS PRIOR TO A SCHEDULE TRAFFIC SIGNAL TURN-ON A CHANGABLE MESSAGE SIGN IN EACH DIRECTION OF IL-60 SHALL BE INSTALLED WITH THE FOLLOWING MESSAGES:

NEW TRAFFIC SIGNAL      STARTING DATE FOR SIGNAL TURN-ON

ON THE DAY OF THE TURN-ON THE MESSAGE SHALL BE REVISED TO READ:

NEW SIGNAL AHEAD      BE PREPARED TO STOP

FILE NAME =	USER NAME = parynoal	DESIGNED -	REVISED -	<p align="center"><b>STATE OF ILLINOIS DEPARTMENT OF TRANSPORTATION</b></p> <p align="center"><b>INDEX OF SHEETS, LIST OF STATE STANDARDS &amp; GENERAL NOTES</b></p> <p align="center"><b>FAP 535 / IL ROUTE 60 AT WILSON ROAD</b></p>	F.A.P. RTE.	SECTION	COUNTY	TOTAL SHEETS	SHEET NO.
p:\planroom\dot.illinois.gov\PIDOT\Documents\IDOT Offices\District 1\Projects\PI09410\DRAWING\Design\PI09410-Design.dgn		REVISOR -	REVISION -		535	118N-2	LAKE	57	2
PLOT SCALE = 100.0588' / in.		CHECKED -	REVISION -		CONTRACT NO. 60X57				
PLOT DATE = 6/11/2021		DATE -	REVISION -		FED. ROAD DIST. NO.   ILLINOIS FED. AID PROJECT				

REVISED 7-20-2021

REV-SEP

SCALE: 1"=50'      SHEET NO. 1 OF 1 SHEETS      STA.      TO STA.

SUMMARY OF QUANTITIES			CONSTRUCTION TYPE CODE				
CODE NO	ITEM	UNIT	TOTAL QUANTITIES URBAN	ROADWAY 0004	INTERCONNECT 0021	SIGNALS 0021	EVP 0021
				FED 90% STATE 10%	FED 90% STATE 6.3% COUNTY 3.7%	FED 90% STATE 10%	FIRE DEPT 100%
20200100	EARTH EXCAVATION	CU YD	1770	1770			
20100110	TREE REMOVAL (6 TO 15 UNITS DIAMETER)	UNIT	38	38			
20201200	REMOVAL AND DISPOSAL OF UNSUITABLE MATERIAL	CU YD	1525	1525			
20100210	TREE REMOVAL (6 OVER 15 UNITS DIAMETER)	UNIT	136	136			
20800150	TRENCH BACKFILL	CU YD	19	19			
21001000	GEOTECHNICAL FABRIC FOR GROUND STABILIZATION	SO YD	475	475			
21101505	TOPSOIL EXCAVATION AND PLACEMENT	CU YD	1592	1592			
25000210	SEEDING, CLASS 2A	ACRE	0.5	0.5			
25000400	NITROGEN FERTILIZER NUTRIENT	POUND	188	188			
25000500	PHOSPHORUS FERTILIZER NUTRIENT	POUND	188	188			
25000600	POTASSIUM FERTILIZER NUTRIENT	POUND	188	188			
25100630	EROSION CONTROL BLANKET	SO YD	7550	7550			
25200200	SUPPLEMENTAL WATERING	UNIT	151	151			
28000250	TEMPORARY EROSION CONTROL SEEDING	POUND	156	156			
28000305	TEMPORARY DITCH CHECKS	FOOT	100	100			

SUMMARY OF QUANTITIES			CONSTRUCTION TYPE CODE				
CODE NO	ITEM	UNIT	TOTAL QUANTITIES URBAN	ROADWAY 0004	INTERCONNECT 0021	SIGNALS 0021	EVP 0021
				FED 90% STATE 10%	FED 90% STATE 6.3% COUNTY 3.7%	FED 90% STATE 10%	FIRE DEPT 100%
28000400	PERIMETER EROSION BARRIER	FOOT	1600	1600			
28000510	INLET FILTERS	EACH	10	10			
28001100	TEMPORARY EROSION CONTROL BLANKET	SO YD	7550	7550			
30300001	AGGREGATE SUBGRADE IMPROVEMENT	CU YD	475	475			
30300112	AGGREGATE SUBGRADE IMPROVEMENT 12"	SO YD	1430	1430			
35501308	HOT-MIX ASPHALT BASE COURSE, 6"	SO YD	50	50			
40600290	BITUMINOUS MATERIALS (TACK COAT)	POUND	5000	5000			
40600400	MIXTURE FOR CRACKS, JOINTS, AND FLANGEWAYS	TON	9	9			
40600982	HOT-MIX ASPHALT SURFACE REMOVAL - BUTT JOINT	SO YD	41	41			
40603090	HOT-MIX ASPHALT BINDER COURSE, IL-19.0, N90	TON	620	620			
40603200	POLYMERIZED HOT-MIX ASPHALT BINDER COURSE, IL-4.75, N50	TON	307	307			
40604060	HOT-MIX ASPHALT SURFACE COURSE, MIX "D", N50	TON	6	6			
40604172	POLYMERIZED HOT-MIX ASPHALT SURFACE COURSE, MIX "E", N70	TON	730	730			
* SPECIALTY ITEMS							

FILE NAME =	USER NAME = gullhauserp	DESIGNED -	REVISED -
pw:\p\planroom\dtd\illinois\gov\FW\DOT\Documents\VDOT\Offices\District\Projects\P109410\CAD\del\Design\P109410-Des\DRAWN			
PLOT SCALE = 100.0000' / 1in	CHECKED -	REVISED -	
PLOT DATE = 5/13/2021	DATE -	REVISED -	

**STATE OF ILLINOIS  
DEPARTMENT OF TRANSPORTATION**

**IL ROUTE 60 AT WILSON ROAD  
SUMMARY OF QUANTITIES**

F.A.P. RTE.	SECTION	COUNTY	TOTAL SHEETS	SHEET NO.
535	118N-2	LAKE	57	3
CONTRACT NO. 60X57			REV-SEP	
SCALE: SHEET NO. OF SHEETS STA. TO STA. FED. ROAD DIST. NO. 1 [ILLINOIS] FED. AID PROJECT				

REVIS 7-20-2021

SUMMARY OF QUANTITIES			TOTAL QUANTITIES URBAN	CONSTRUCTION TYPE CODE					SUMMARY OF QUANTITIES			TOTAL QUANTITIES URBAN	CONSTRUCTION TYPE CODE				
CODE NO	ITEM	UNIT		ROADWAY 0004 FED 90% STATE 10%	INTERCONNECT 0021 FED 90% STATE 6.3% COUNTY 3.7%	SIGNALS 0021 FED 90% STATE 10%	EVP 0021 FIRE DEPT 100%	CODE NO	ITEM	UNIT	ROADWAY 0004 FED 90% STATE 10%		INTERCONNECT 0021 FED 90% STATE 6.3% COUNTY 3.7%	SIGNALS 0021 FED 90% STATE 10%	EVP 0021 FIRE DEPT 100%		
44000159	HOT-MIX ASPHALT SURFACE REMOVAL, 2 1/2"	SO YD	6000	6000				542A0241	PIPE CULVERTS, CLASS A, TYPE 1 36"	FOOT	29	29					
44201803	CLASS D PATCHES, TYPE II, 13 INCH	SO YD	20	20				550A0070	STORM SEWERS, CLASS A, TYPE 1, 15"	FOOT	200	200					
44201807	CLASS D PATCHES, TYPE III, 13 INCH	SO YD	25	25				60500050	REMOVING CATCH BASINS	EACH	2	2					
44201809	CLASS D PATCHES, TYPE IV, 13 INCH	SO YD	40	40				* 63000003	STEEL PLATE BEAM GUARDRAIL, TYPE A, 9 FOOT POSTS	FOOT	1870	1870					
44201914	CLASS D PATCHES, TYPE II, 22 INCH	SO YD	20	20				* 63100167	TRAFFIC BARRIER TERMINAL, TYPE 1 (SPECIAL) TANGENT	EACH	4	4					
48101620	AGGREGATE SHOULDERS, TYPE B 10"	SO YD	930	930				63200310	GUARDRAIL REMOVAL	FOOT	310	310					
48203029	HOT-MIX ASPHALT SHOULDERS, 8"	SO YD	1920	1920				<del>64300350</del>	<del>IMPACT ATTENUATORS (FULLY REDIRECTIVE, WIDE), TEST LEVEL 2</del>	<del>EACH</del>	<del>4</del>	<del>4</del>					
50105220	PIPE CULVERT REMOVAL	FOOT	220	220				* 66900530	SOIL DISPOSAL ANALYSIS	EACH	2	2					
50800105	REINFORCEMENT BARS	POUND	112	112				* 66901001	REGULATED SUBSTANCES PRE-CONSTRUCTION PLAN	LSUM	1	1					
54002020	EXPANSION BOLTS 3/4 INCH	EACH	32	32				* 66901003	REGULATED SUBSTANCES FINAL CONSTRUCTION REPORT	LSUM	1	1					
54213660	PRECAST REINFORCED CONCRETE FLARED END SECTIONS 15"	EACH	8	8				* 66901006	REGULATED SUBSTANCES MONITORING	CAL DA	15	15					
54213681	PRECAST REINFORCED CONCRETE FLARED END SECTIONS 36"	EACH	4	4				67000400	ENGINEER'S FIELD OFFICE, TYPE A	CAL MO	9	9					
54248510	CONCRETE COLLAR	CU YD	2.4	2.4				67100100	MOBILIZATION	L SUM	1	1					
542A0220	PIPE CULVERTS, CLASS A, TYPE 1 15"	FOOT	149	149				70103815	TRAFFIC CONTROL SURVEILLANCE	CAL DA	30	30					
								* SPECIALTY ITEMS									



~~64300350 IMPACT ATTENUATORS (FULLY REDIRECTIVE,  
WIDE), TEST LEVEL 2~~

FILE NAME =	USER NAME = gullhauserp	DESIGNED -	REVISED -
pw:\planroom\dtd\illinois\gov\PI001\Documents\DOT	Office\District\Projects\PI094\0\CA\0\0\Design\PI094\0-Des	DRAWN -	REVISED -
	PLOT SCALE = 100,0000' / 1in	CHECKED -	REVISED -
	PLOT DATE = 5/13/2021	DATE -	REVISED -

**STATE OF ILLINOIS  
DEPARTMENT OF TRANSPORTATION**

**IL ROUTE 60 AT WILSON ROAD  
SUMMARY OF QUANTITIES**

SCALE: SHEET NO. OF SHEETS STA. TO STA.

F.A.P. RTE.	SECTION	COUNTY	TOTAL SHEETS	SHEET NO.
535	118N-2	LAKE	57	4
FED. ROAD DIST. NO. 1 [ILLINOIS] FED. AID PROJECT			CONTRACT NO. 60X57	

REVISÉD 7-20-2021 REV-SEP

SUMMARY OF QUANTITIES				CONSTRUCTION TYPE CODE					SUMMARY OF QUANTITIES				CONSTRUCTION TYPE CODE							
CODE NO	ITEM	UNIT	TOTAL QUANTITIES URBAN	ROADWAY 0004 FED 90% STATE 10%	INTERCONNECT 0021 FED 90% STATE 6.3% COUNTY 3.7%	SIGNALS 0021 FED 90% STATE 10%	EVP 0021 FIRE DEPT 100%			CODE NO	ITEM	UNIT	TOTAL QUANTITIES URBAN	ROADWAY 0004 FED 90% STATE 10%	INTERCONNECT 0021 FED 90% STATE 6.3% COUNTY 3.7%	SIGNALS 0021 FED 90% STATE 10%	EVP 0021 FIRE DEPT 100%			
70300100	SHORT TERM PAVEMENT MARKING	FOOT	4200	4200						* 78000100	THERMOPLASTIC PAVEMENT MARKING - LETTERS AND SYMBOLS	SO FT	72.6	72.6						
70300150	SHORT TERM PAVEMENT MARKING REMOVAL	SO FT	1400	1400																
70107025	CHANGEABLE MESSAGE SIGN	CAL DA	30	30						* 78000200	THERMOPLASTIC PAVEMENT MARKING - LINE 4"	FOOT	7700	7700						
70300210	TEMPORARY PAVEMENT MARKING LETTERS AND SYMBOLS	SO FT	72.6	72.6						* 78000400	THERMOPLASTIC PAVEMENT MARKING - LINE 6"	FOOT	700	700						
70300220	TEMPORARY PAVEMENT MARKING - LINE 4"	FOOT	7700	7700						* 78000600	THERMOPLASTIC PAVEMENT MARKING - LINE 12"	FOOT	150	150						
70300240	TEMPORARY PAVEMENT MARKING - LINE 6"	FOOT	700	700						* 78009004	MODIFIED URETHANE PAVEMENT MARKING - LINE 4"	FOOT	5500	5500						
70300260	TEMPORARY PAVEMENT MARKING - LINE 12"	FOOT	150	150						* 78000650	THERMOPLASTIC PAVEMENT MARKING - LINE 24"	FOOT	100	100						
70300280	TEMPORARY PAVEMENT MARKING - LINE 24"	FOOT	100	100						* 78009024	MODIFIED URETHANE PAVEMENT MARKING - LINE 24"	FOOT	24	24						
70300520	PAVEMENT MARKING TAPE, TYPE III 4"	FOOT	1050	1050						* 78100100	RAISED REFLECTIVE PAVEMENT MARKER	EACH	30	30						
70300904	PAVEMENT MARKING TAPE, TYPE IV 4"	FOOT	5500	5500						* 78200005	GUARDRAIL REFLECTORS, TYPE A	EACH	30	30						
70400100	TEMPORARY CONCRETE BARRIER	FOOT	1160	1160						* 78200011	BARRIER WALL REFLECTORS, TYPE C	EACH	180	180						
70400200	RELOCATE TEMPORARY CONCRETE BARRIER	FOOT	1130	1130						78300200	RAISED REFLECTIVE PAVEMENT MARKER REMOVAL	EACH	18	18						
70600260	IMPACT ATTENUATORS, TEMPORARY (FULLY REDIRECTIVE, NARROW), TEST LEVEL 3	EACH	4	4						* 81028200	UNDERGROUND CONDUIT, GALVANIZED STEEL, 2" DIA.	FOOT	2841		604	2237				
70600320	IMPACT ATTENUATORS, RELOCATE (FULLY REDIRECTIVE), TEST LEVEL 2	EACH	2	2						* 81028220	UNDERGROUND CONDUIT, GALVANIZED STEEL, 3" DIA.	FOOT	104		104					
70600332	IMPACT ATTENUATORS, RELOCATE (FULLY REDIRECTIVE, NARROW), TEST LEVEL 3	EACH	2	2																
* 72000100	SIGN PANEL - TYPE 1	SO FT	70	49	21															
* 72501000	TERMINAL MARKER - DIRECT APPLIED	EACH	3	3																
72800100	TELESCOPING STEEL SIGN SUPPORT	FOOT	82	82							* SPECIALTY ITEMS									

REVISÉ 7-20-2021 REV-SEP

FILE NAME =	USER NAME = gullhauserp	DESIGNED -	REVISED -
\\p\planroom\dtd\illinois\gov\PI09410\CA\001\Design\PI09410-01.dwg		DRAWN -	REVISED -
		CHECKED -	REVISED -
		DATE -	REVISED -

STATE OF ILLINOIS  
DEPARTMENT OF TRANSPORTATION

IL ROUTE 60 AT WILSON ROAD  
SUMMARY OF QUANTITIES

F.A.P. RTE.	SECTION	COUNTY	TOTAL SHEETS	SHEET NO.
535	118N-2	LAKE	57	5
SCALE:			CONTRACT NO. 60X57	
SHEET NO. OF SHEETS STA. TO STA.			FED. ROAD DIST. NO. 1 (ILLINOIS) FED. AID PROJECT	



SUMMARY OF QUANTITIES				CONSTRUCTION TYPE CODE					SUMMARY OF QUANTITIES				CONSTRUCTION TYPE CODE							
CODE NO	ITEM	UNIT	TOTAL QUANTITIES URBAN	ROADWAY 0004 FED 90% STATE 10%	INTERCONNECT 0021 FED 90% STATE 6.3% COUNTY 3.7%	SIGNALS 0021 FED 90% STATE 10%	EVP 0021 FIRE DEPT 100%			CODE NO	ITEM	UNIT	TOTAL QUANTITIES URBAN	ROADWAY 0004 FED 90% STATE 10%	INTERCONNECT 0021 FED 90% STATE 6.3% COUNTY 3.7%	SIGNALS 0021 FED 90% STATE 10%	EVP 0021 FIRE DEPT 100%			
* 88030110	SIGNAL HEAD, LED, 1-FACE, 5-SECTION, MAST-ARM MOUNTED	EACH	2		2					<del>X1400215</del>	<del>SPLICE FIBER IN CABINET</del>	EACH	<del>1</del>							
* 88200410	TRAFFIC SIGNAL BACKPLATE, LOUVERED, FORMED PLASTIC	EACH	6		6					X2501800	SEEDING, CLASS 4 (MODIFIED)	ACRE	1.25	1.25						
* 88500100	INDUCTIVE LOOP DETECTOR	EACH	3		3					X2502024	SEEDING, CLASS 4B (MODIFIED)	ACRE	1.25	1.25						
* 88600100	DETECTOR LOOP, TYPE I	FOOT	176		176					X7010216	TRAFFIC CONTROL AND PROTECTION, (SPECIAL)	L SUM	1	1						
* 88700200	LIGHT DETECTOR	EACH	2				2			X7030005	TEMPORARY PAVEMENT MARKING REMOVAL	SO FT	3340	3340						
* 88700300	LIGHT DETECTOR AMPLIFIER	EACH	1				1			X8620200	UNINTERRUPTABLE POWER SUPPLY, SPECIAL	EACH	1		1					
* X0324085	EMERGENCY VEHICLE PRIORITY SYSTEM LINE SENSOR CABLE, NO. 20 3/C	FOOT	256				256			X8710024	FIBER OPTIC CABLE IN CONDUIT, NO. 62.5/125, MM12F SM24F	FOOT	2827			2827				
X0326694	PLUG EXISTING STORM SEWERS	CJ YD	165	165						Z0013798	CONSTRUCTION LAYOUT	L SUM	1	1						
* X1400081	FULL-ACTUATED CONTROLLER AND TYPE SUPER P CABINET (SPECIAL)	EACH	1		1					Z0028415	GEOTECHNICAL REINFORCEMENT	SO YD	475	475						
78300201	PAVEMENT MARKING REMOVAL - GRINDING	SQ FT	1890	1890						Z0030850	TEMPORARY INFORMATION SIGNING	SO FT	77.1	77.1						
* X1400102	OUTDOOR RATED NETWORK CABLE	FOOT	181		181					Z0033046	RE-OPTIMIZE TRAFFIC SIGNAL SYSTEM LEVEL	EACH	1			1				
* X1400150	SERVICE INSTALLATION, GROUND MOUNTED, METERED	EACH	1		1					Z0062458	TEMPORARY PAVEMENT ( VARIABLE DEPTH)	TON	7	7						
* X1400201	RADAR VEHICLE DETECTION SYSTEM, SINGLE APPROACH, STOP BAR	EACH	1		1					Z0076600	TRAINEES	HOURS	500	500						
<del>X1400215</del>	<del>REMOTE CONTROLLED VIDEO SYSTEM</del>	EACH	<del>1</del>		<del>1</del>					Z0076604	TRAINEES-TRAINING PROGRAM GRADUATE	HOURS	500	500						
<del>X1400217</del>	<del>TERMINATE FIBER IN CABINET</del>	EACH	<del>24</del>		<del>24</del>					* X1400439	REMOTE CONTROLLED VIDEO SYSTEM	EACH	1			1				
										* X1400451	LAYER II (DATA LINK) SWITCH	EACH	1		1					
										* X1400452	TERMINATE FIBER IN CABINET	EACH	24		24					
										* X1400453	SPLICE FIBER IN CABINET	EACH	1		1					

\* SPECIALTY ITEMS

REVISÉD 7-20-2021 0042 REV-SEP

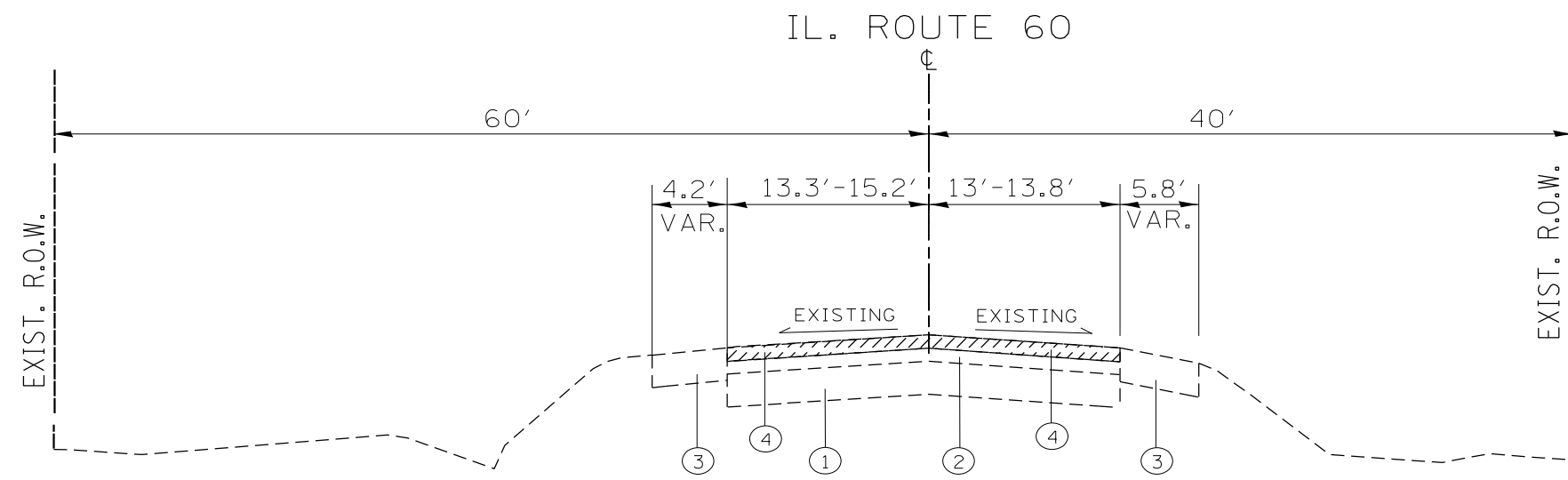
FILE NAME =	USER NAME = gullhauserp	DESIGNED -	REVISED -
planningroom\dtd\illinois\p11001\Documents\DOT	Files\District N\Projects\P109410\CAD\del\Design\P109410-Des	REVISÉD -	REVISÉD -
		CHECKED -	REVISÉD -
		DATE -	REVISÉD -

STATE OF ILLINOIS  
DEPARTMENT OF TRANSPORTATION

IL ROUTE 60 AT WILSON ROAD  
SUMMARY OF QUANTITIES

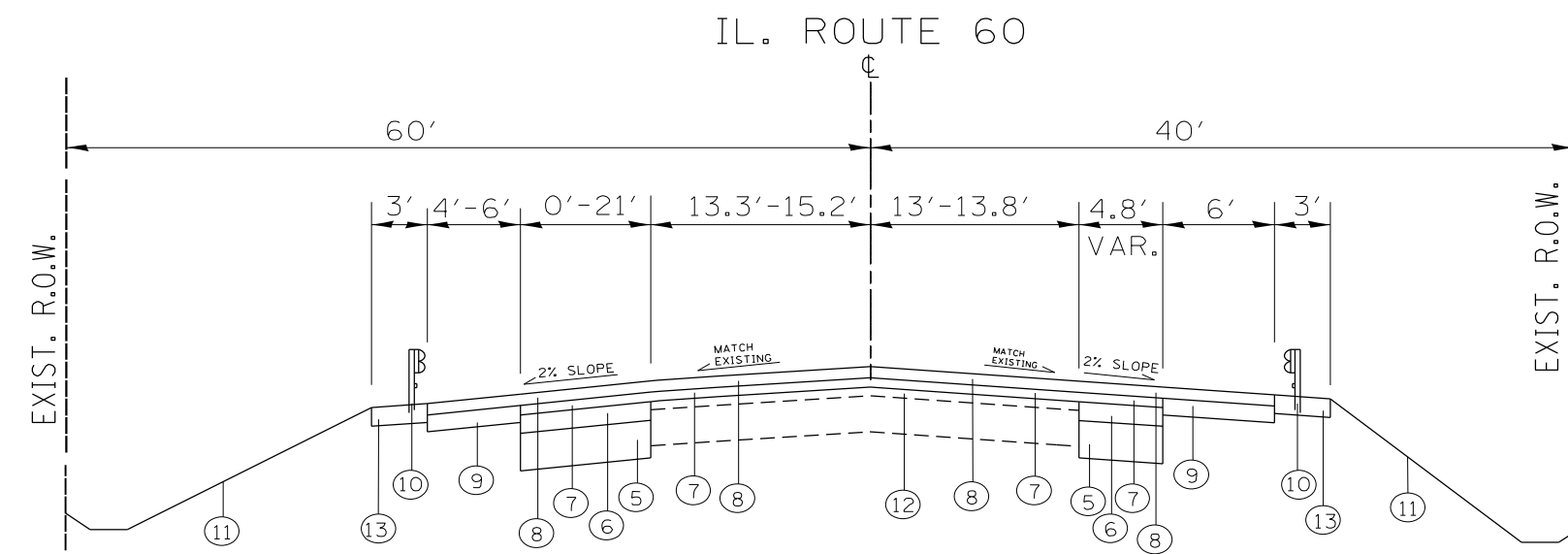
SCALE:	SHEET NO. OF SHEETS	STA. TO STA.	F.A.P. RTE. 535	SECTION 118N-2	COUNTY LAKE	TOTAL SHEETS 57	SHEET NO. 7
--------	---------------------	--------------	-----------------	----------------	-------------	-----------------	-------------

FED. ROAD DIST. NO. 1 [ILLINOIS] FED. AID PROJECT



EXISTING TYPICAL CROSS SECTION  
ILLINOIS ROUTE 60  
(STA. 492+00 TO STA. 505+00)

- LEGEND**
- ① EXISTING P.C.C. PAVEMENT, ± 9"
  - ② EXISTING HMA SURFACE COURSE, ± 13"
  - ③ EXISTING AGGREGATE SHOULDER, TYPE B, 6"
  - ④ PROPOSED HMA SURFACE REMOVAL, 2 1/2"
  - ⑤ PROPOSED AGGREGATE SUBGRADE IMPROVEMENT, 12"
  - ⑥ PROPOSED HMA BINDER COURSE, IL-19, N90, 7 3/4"
  - ⑦ PROPOSED POLYMERIZED HMA BINDER COURSE, N50, IL 4.75 3/4"
  - ⑧ PROPOSED POLYMERIZED HMA SURFACE COURSE, (IL 9.5 mm), MIX "E", N70, 1 3/4"
  - ⑨ PROPOSED HMA SHOULDER, 8" (SURFACE AND BINDER)
  - ⑩ PROPOSED GUARDRAIL (SEE PLAN SHEET)
  - ⑪ PROPOSED TOPSOIL, 6"
  - ⑫ EXISTING HMA AFTER REMOVAL, ± 11"
  - ⑬ PROPOSED AGGREGATE SHOULDER, TYPE B, 10"



PROPOSED TYPICAL CROSS SECTION  
ILLINOIS ROUTE 60  
(STA. 492+00 TO STA. 505+00)

HOT-MIX ASPHALT MIXTURE REQUIREMENTS		
MIXTURE TYPE	AIR VOIDS (%) @ 75°F	QUALITY MANAGEMENT PROGRAM (QMP)
<b>PAVEMENT WIDENING</b>		
POLYMERIZED HMA SURFACE COURSE, MIX "E", N70 (IL 9.5 mm), 1 3/4"	4% AT 70 GYR.	QC/OA
POLYMERIZED HMA BINDER COURSE, IL-4.75, N50, 3/4"	3.5% AT 50 GYR.	QC/OA
HMA BINDER COURSE, IL-19, N90, 7 3/4"	4% AT 90 GYR.	QC/OA
<b>PAVEMENT RESURFACING</b>		
POLYMERIZED HMA SURFACE COURSE, MIX "E", N70 (IL 9.5 mm), 1 3/4"	4% AT 70 GYR.	QC/OA
POLYMERIZED HMA BINDER COURSE, IL-4.75, N50, 3/4"	3.5% AT 50 GYR.	QC/OA
<b>PATCHING</b>		
CLASS D PATCH (HMA BINDER, IL-19.0 mm)	4% AT 70 GYR.	QC/OA
<b>HMA SHOULDER, 8"</b>		
POLYMERIZED HMA SURFACE COURSE, MIX "E", N70 (IL 9.5 mm), 1 3/4"	4% AT 70 GYR.	QC/OA
HMA BINDER COURSE, IL-19, N90, 6 1/4"	4% AT 90 GYR.	QC/OA
<b>HMA DRIVEWAYS</b>		
HMA SURFACE COURSE, MIX "D", N50 (IL 9.5 mm), 2"	4% AT 50 GYR.	QC/OA
HMA BASE COURSE, (HMA BINDER IL-19 mm), 6"	4% AT 50 GYR.	QC/OA
<b>TEMPORARY PAVEMENT (VARIABLE DEPTH)</b>		
HMA SURFACE COURSE, MIX "D", N50 (IL 9.5 mm); VARIABLE DEPTH	4% AT 50 GYR.	QC/OA

**NOTES:**

THE UNIT WEIGHT USED TO CALCULATE ALL HMA SURFACE COURSE MIXTURES IS 112 LBS/SQ YD/IN

"THE "AC TYPE" FOR POLYMERIZED HMA MIXES SHALL BE "SBS/SBR PG 76-22" AND FOR NON-POLYMERIZED HMA THE "AC TYPE" SHALL BE "PG 64-22" UNLESS MODIFIED BY SPECIAL PROVISIONS."  
FOR USE OF RECYCLED MATERIALS SEE SPECIAL PROVISIONS

QUALITY MANAGEMENT PROGRAM (QMP) IDENTIFIES THE PARTICULAR QUALITY CONTROL SPECIFICATION THAT APPLIES TO THE HMA MIXTURE



1 REVISED 7-20-2021

## EARTHWORK SCHEDULE (IL 60)

IL RTE 60 AT WILSON ROAD	EARTH EXCAVATION (CU. YD.)	TOP SOIL EXCAVATION (CU. YD.)	EXCAVATION USED AS EMBANKMENT (SHRINKAGE 15%) (CU. YD.)	EMBANKMENT (CU. YD.)	TOP SOIL PLACEMENT (CU. YD.)	EARTH WORK BALANCE SURPLUS (+) OR SHORTAGE (-) (CU. YD.)	TOP SOIL BALANCE SURPLUS (+) OR SHORTAGE (-) (CU. YD.)
<b>STAGE 1</b>	878	801	746	548	235	198	566
<b>STAGE 2</b>	768	729	653	672	247	-19	482
<b>TOTAL</b>	1646	1530	1399	1220	482	179	1048

## EARTHWORK SCHEDULE (WILSON RD.)

IL RTE 60 AT WILSON ROAD	EARTH EXCAVATION (CU. YD.)	TOP SOIL EXCAVATION (CU. YD.)	EXCAVATION USED AS EMBANKMENT (SHRINKAGE 15%) (CU. YD.)	EMBANKMENT (CU. YD.)	TOP SOIL PLACEMENT (CU. YD.)	EARTH WORK BALANCE SURPLUS (+) OR SHORTAGE (-) (CU. YD.)	TOP SOIL BALANCE SURPLUS (+) OR SHORTAGE (-) (CU. YD.)
<b>STAGE 1</b>	124	62	105	51	53	55	0
<b>STAGE 2</b>	0	0	0	0	0	0	0
<b>TOTAL</b>	124	62	105	51	53	55	0

**NOTE:**

SURPLUS OF TOPSOIL MATERIAL WILL BE PAID AS "REMOVAL AND UNSUITABLE MATERIAL".

## TREE REMOVAL

STATION	OFFSET	TREE REMOVAL (6 TO 15 UNITS DIAMETER) (UNIT)	TREE REMOVAL (OVER 15 UNITS DIAMETER) (UNIT)
494+60	33	14	
494+92	35		24
495+05	38		18
496+51	28		42
497+11	35	12	
498+04	34		24
499+31	33		18
499+57	38	12	

1

1 REVISED 7-20-2021

MAINTENANCE OF TRAFFIC GENERAL NOTES

ALL OF THE TRAFFIC CONTROL DEVICES SHALL BE IN PLACE BEFORE CONSTRUCTION IS STARTED. ALL TEMPORARY PAVEMENT MARKINGS & TRAFFIC CONTROL DEVICES SHALL BE IN PLACE AT THE BEGINNING OF EACH STAGE, AND SHALL BE MAINTAINED FOR THE DURATION OF THAT STAGE UNLESS OTHERWISE DIRECTED BY THE ENGINEER.

A MINIMUM OF TWO (2) ELEVEN FOOT (11') LANES, ONE IN EACH DIRECTION, SHALL BE KEPT OPEN TO TRAFFIC ON IL ROUTE 60 AND ON WILSON ROAD.

ACCESS SHALL BE MAINTAINED TO ALL PROPERTIES DURING CONSTRUCTION OPERATIONS WITH THE USE OF AGGREGATE FOR TEMPORARY ACCESS AND/OR BY CONSTRUCTING ONE HALF OF PROPOSED DRIVEWAYS AT A TIME.

PROVIDE TEMPORARY HMA RAMP WEDGE TO TRANSITION THE DIFFERENTIAL ELEVATIONS CAUSED BY STAGED CONSTRUCTION BETWEEN THE NEW CONSTRUCTION AND THE EXISTING PAVEMENT. ANY PAVEMENT DROP-OFFS GREATER THAN 3 INCHES IMMEDIATELY ADJACENT TO TRAFFIC SHALL NOT BE LEFT OVERNIGHT. PROVIDE TEMPORARY HMA RAMP WEDGE OR OTHER MITIGATING MEASURES APPROVED BY THE ENGINEER. THE RAMP WEDGE SHALL USE HMA SURFACE COURSE AND WILL BE PAID FOR WITH THE APPLICABLE MIXTURE TYPE PER TON.

CHANNELIZING DEVICES ARE TO BE PLACED AT SAME LEVEL AS TRAVELING LANE OR SHOULDER PROFILE.

CHANNELIZING DEVICES MAY BE PLACED AT THE DROP-OFF ELEVATION TO PRESERVE LANE WIDTH. THE REFLECTIVE AREA AND WARNING LIGHT SHALL BE RAISED TO THE ELEVATION ABOVE THE TRAVELING LANE OR SHOULDER PROFILE AS REQUIRED BY STANDARD 701901.

CHANNELIZING DEVICES ARE TO BE PLACED AT THE SAME LEVEL AS SIDE SLOPE PROFILE TO BE FULLY VISIBLE.

THE CONTRACTOR SHALL MAINTAIN TRAFFIC IN ACCORDANCE WITH THE PLANS, SPECIAL PROVISIONS, STATE STANDARDS AND AS DIRECTED BY THE ENGINEER.

THE CONTRACTOR SHALL INFORM THE ENGINEER OF ANY CHANGES IN STAGING AT LEAST TWO (2) WORKING DAYS IN ADVANCE.

ALL "ROAD CONSTRUCTION AHEAD" SIGNS SHALL BE EQUIPPED WITH MONO-DIRECTIONAL AMBER FLASHING LIGHTS.

EXISTING TRAFFIC CONTROL DEVICES WITHIN THE LIMITS OF CONSTRUCTION, ARE TO BE PROTECTED FROM DAMAGE BY THE CONTRACTOR. ANY DAMAGED SIGNS CAUSED BY HIS WORK SHALL BE REPLACED BY THE CONTRACTOR.

TRAFFIC CONTROL DEPICTED ON THE MAINTENANCE OF TRAFFIC PLANS IS THE MINIMUM REQUIREMENT. OTHER WORK OR SIGNING MAY BE REQUIRED BY THE ENGINEER.

PAVEMENT MARKING TAPE, TYPE IV SHALL BE USED ON ALL FINAL PAVEMENT SURFACES AND EXISTING PAVEMENT SURFACES TO REMAIN. MODIFIED URETHANE PAVEMENT MARKINGS SHALL BE USED ON TEMPORARY PAVEMENT OR EXISTING PAVEMENT THAT IS TO BE REMOVED.

ALL EXISTING PAVEMENT MARKINGS IN CONFLICT WITH THE PAVEMENT MARKING TAPE, TYPE IV AND/OR MODIFIED URETHANE USED FOR STAGING SHALL BE REMOVED. THIS WORK SHALL BE PAID FOR AS "PAVEMENT MARKING REMOVAL-GRINDING" WITHIN THE PROJECT LIMITS AND "PAVEMENT MARKING REMOVAL-WATER BLASTING" OUTSIDE THE PROJECT LIMITS.

ALL MODIFIED URETHANE PAVEMENT MARKINGS USED FOR STAGING SHALL BE REMOVED VIA WATER BLASTING WITH VACUUM RECOVERY ON FINAL PAVEMENT SURFACES, AND VIA GRINDING ON EXISTING OR TEMPORARY PAVEMENT SURFACES THAT ARE TO BE REMOVED. THIS WORK SHALL BE PAID FOR AS "TEMPORARY PAVEMENT MARKING REMOVAL".

CHANGEABLE MESSAGE SIGNS SHALL BE INSTALLED TWO WEEKS PRIOR TO TRAFFIC STAGE CHANGES AND NEW TRAFFIC SIGNAL TURN-ON EVENTS ON EACH APPROACH OF THE EFFECTED ROADWAY TO WARN MOTORISTS OF THE UPCOMING EVENT. THE SIGNS SHALL BE REMOVED TWO WEEKS THEREAFTER UNLESS THE SIGNS ARE NEEDED AGAIN FOR A SUBSEQUENT FUTURE EVENT THAT WILL OCCUR WITHIN TWO WEEKS ON THE SAME APPROACH OF THE EFFECTED ROADWAY. THE SIGN LOCATIONS SHALL BE DETERMINED BY THE ENGINEER.

MAINTENANCE OF TRAFFIC STAGING NOTES

PRE-STAGE

APPLICABLE HIGHWAY STANDARDS FOR TRAFFIC CONTROL AND PROTECTION FOR DAY-TIME LANE CLOSURES SHALL BE UTILIZED TO PERFORM THE FOLLOING WORK:

- MAINTAIN DRIVEWAYS AND ENTRANCE ACCESS WITH TEMPORARY ACCESS (EACH)
- RELOCATION OF UTILITIES

STAGE I

TRAVEL WAY SHALL REMAIN AS ONE LANE IN EACH DIRECTION ON IL ROUTE 60 AND ON WILSON ROAD.

ALL PROPOSED WORK SHALL BE EXECUTED WITHIN THE WORK AREA, THIS INCLUDES, BUT IS NOT LIMITED TO:

1. PERFORM EARTH AND PROPOSED DITCH GRADING IN WORK ZONE
2. CONSTRUCT PAVEMENT WIDENING, SHOULDERS, CULVERTS EXTENSION AND GUARDRAIL PLACEMENT ON NORTH SIDE OF IL 60 AND ON EACH SIDE OF WILSON ROAD.

STAGE II

TRAVEL WAY SHALL REMAIN AS ONE LANE IN EACH DIRECTION ON IL ROUTE 60 AND ON WILSON ROAD.

ALL PROPOSED WORK SHALL BE EXECUTED WITHIN THE WORK AREA, THIS INCLUDES, BUT IS NOT LIMITED TO:

1. PERFORM EARTH AND PROPOSED DITCH GRADING IN WORK ZONE
2. CONSTRUCT PAVEMENT WIDENING, SHOULDERS, CULVERTS EXTENSION AND GUARDRAIL PLACEMENT ON SOUTH SIDE OF IL 60.

STAGE III (NOT SHOWN ON MAINTENANCE OF TRAFFIC PLAN SHEETS)

ALL REMAINING PROPOSED WORK SHALL BE COMPLETED DURING THIS STAGE. THIS INCLUDES, BUT IS NOT LIMITED TO:

- RESURFACING OF REMAINING EXISTING PAVEMENT
- PLACEMENT OF HMA SURFACE COURSE WITHIN THE ENTIRE PROJECT LIMITS
- INSTALLATION OF PROPOSED LANDSCAPING THROUGHOUT PROJECT LIMITS
- INSTALLATION OF PROPOSED ROADWAY SIGNS
- INSTALLATION OF PROPOSED THERMOPLASTIC PAVEMENT MARKINGS AND RAISED REFLECTIVE PAVEMENT MARKERS (WHERE APPLICABLE)
- INSTALLATION OF PROPOSED TRAFFIC SIGNALS



REVISED 7-20-2021

MODEL: Default  
 FILE NAME: P:\Highwayroom.dat\Illinois.gov\PWID\DOT\Documents\IBDOT\_Offices\District\_1\Projects\11094110\CAD\data\Design\11094110-stk-details.dgn

USER NAME = guillaumefp	DESIGNED -	REVISED -
	DRAWN -	REVISED -
PLOT SCALE = 100.0000' / in.	CHECKED -	REVISED -
PLOT DATE = 7/8/2021	DATE -	REVISED -

**STATE OF ILLINOIS  
DEPARTMENT OF TRANSPORTATION**

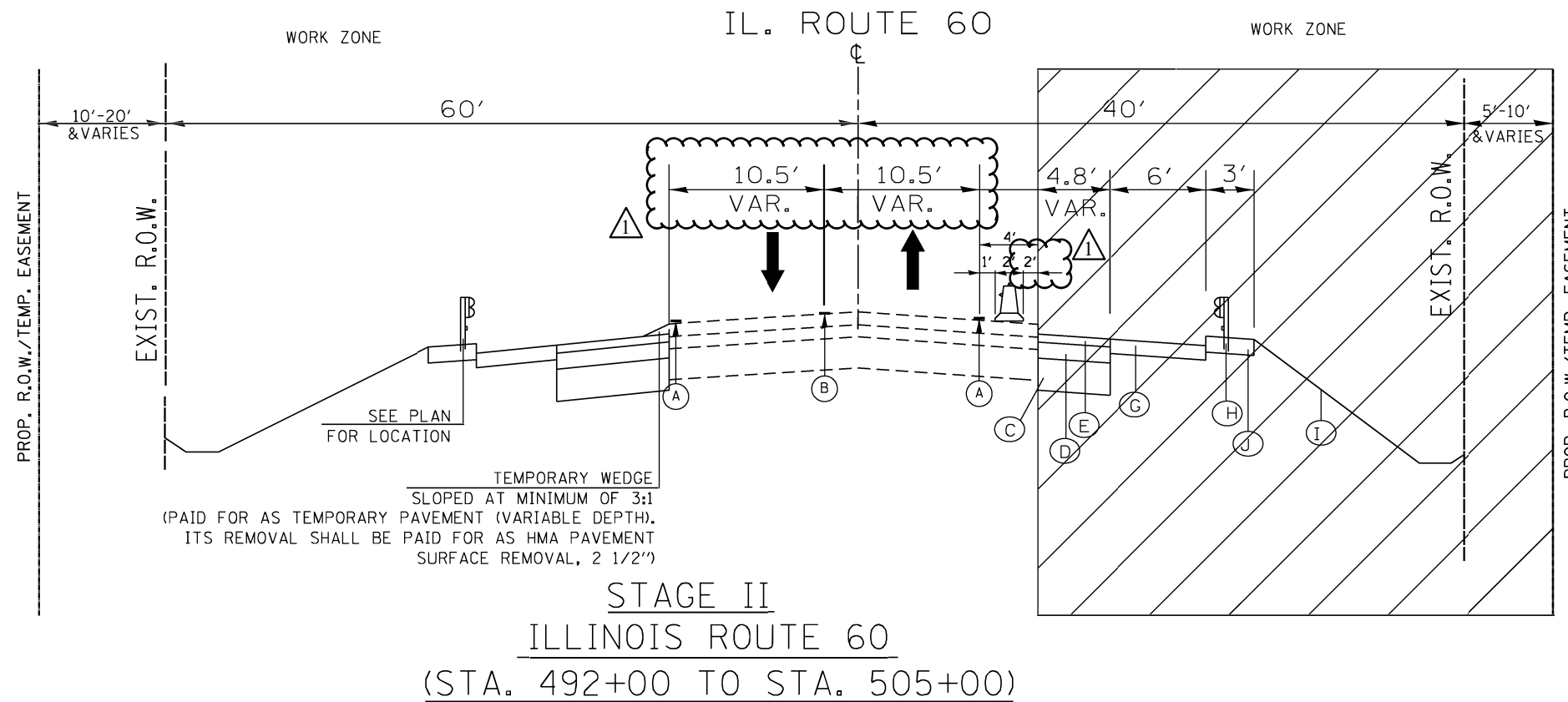
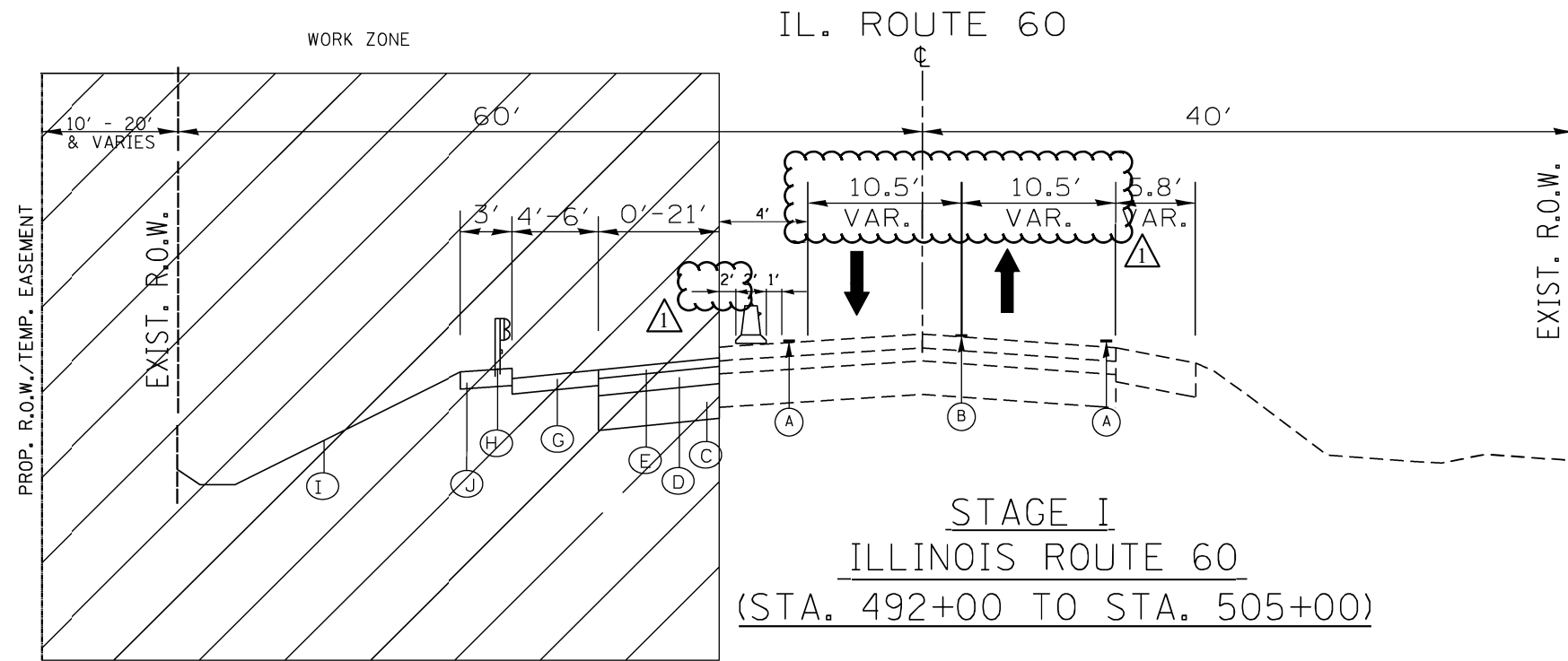
**IL ROUTE 60 AT WILSON ROAD  
CONSTRUCTION STAGING NOTES**

SCALE: SHEET OF SHEETS STA. TO STA.

F.A.P. RTE.	SECTION	COUNTY	TOTAL SHEETS	SHEET NO.
535	118N-2	LAKE	57	14
CONTRACT NO. 60X57				
ILLINOIS FED. AID PROJECT				

**LEGEND**

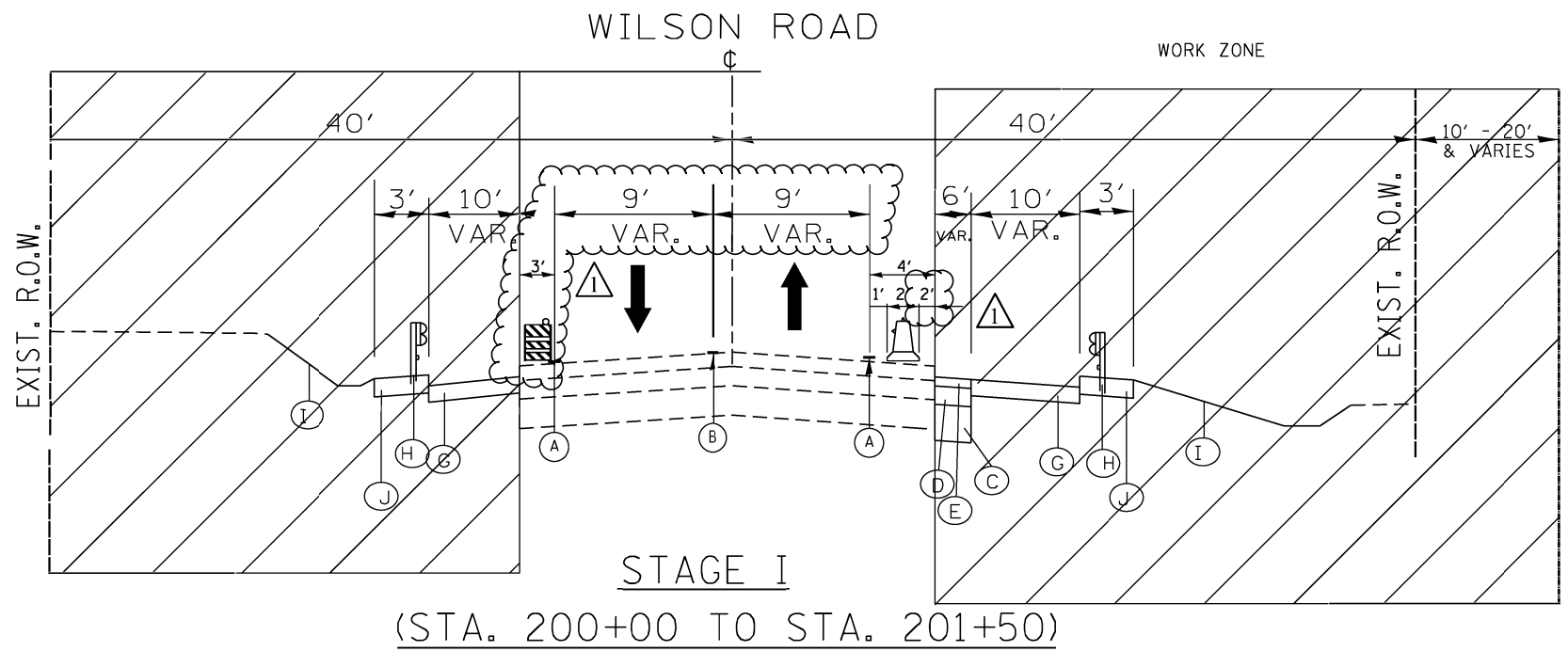
- (A) PAVEMENT MARKING, TAPE, TYPE IV, 4" (WHITE)
- (B) PAVEMENT MARKING, TAPE, TYPE IV, 4" (DOUBLE YELLOW) @ 11" C-C
- (C) PROPOSED AGGREGATE SUBGRADE IMPROVEMENT, 12"
- (D) PROPOSED HMA BINDER COURSE, IL-19, N90, 7 3/4"
- (E) PROPOSED POLYMERIZED HMA BINDER COURSE, N50, IL 4.75 3/4"
- (F) PROPOSED POLYMERIZED HMA SURFACE COURSE, MIX "E", N70, 1 3/4"
- (G) PROPOSED HMA SHOULDER, (BINDER ONLY)
- (H) PROPOSED GUARDWAIL (SEE PLAN SHEET)
- (I) PROPOSED TOPSOIL, 6"
- (J) PROPOSED AGGREGATE SHOULDER, TYPE B, 10"



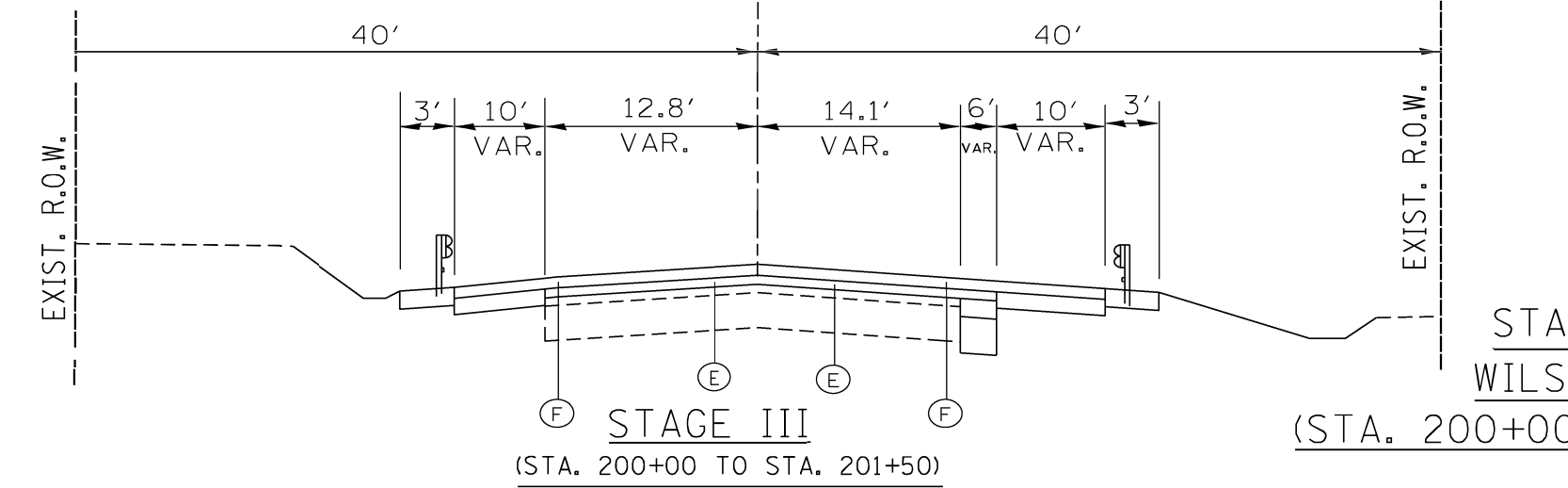
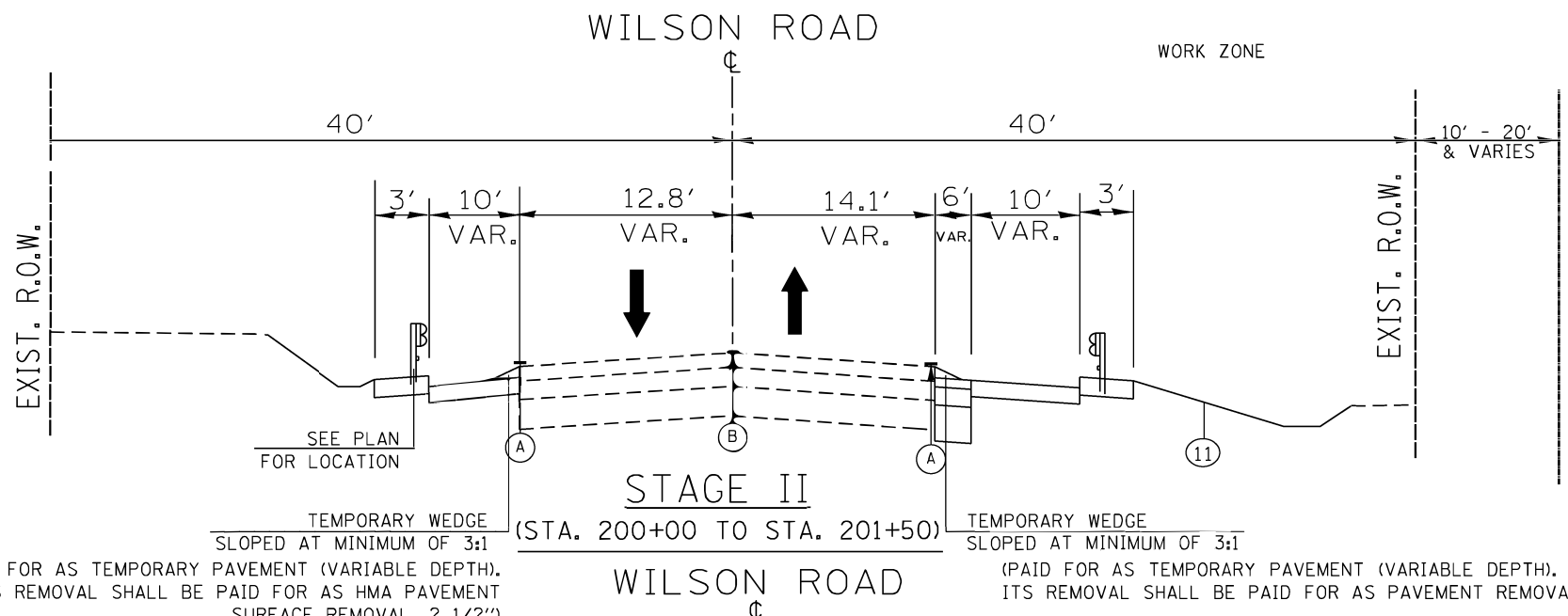
TEMPORARY WEDGE  
SLOPED AT MINIMUM OF 3:1  
(PAID FOR AS TEMPORARY PAVEMENT (VARIABLE DEPTH).  
ITS REMOVAL SHALL BE PAID FOR AS HMA PAVEMENT  
SURFACE REMOVAL, 2 1/2")

△ REVISED 7-20-2021

FILE NAME =	USER NAME = guilleumfp	DESIGNED -	REVISED -	<b>STATE OF ILLINOIS DEPARTMENT OF TRANSPORTATION</b>	<b>CONSTRUCTION STAGING: TYPICAL SECTIONS IL ROUTE 60</b>	F.A.P. RTE.	SECTION	COUNTY	TOTAL SHEETS	SHEET NO.	
						535	118N-2	LAKE	57	15	
						CONTRACT NO. 60X57					
						ILLINOIS FED. AID PROJECT					
				SCALE: N/A		SHEET NO. OF SHEETS		STA. TO STA.			



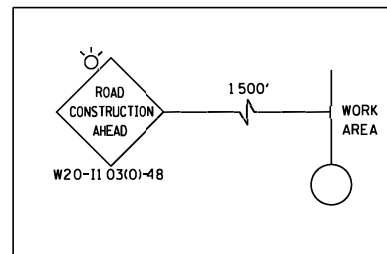
- LEGEND**
- (A) PAVEMENT MARKING, TAPE, TYPE IV, 4" (WHITE)
  - (B) PAVEMENT MARKING, TAPE, TYPE IV, 4" (DOUBLE YELLOW) @ 11" C-C
  - (C) PROPOSED AGGREGATE SUBGRADE IMPROVEMENT, 12"
  - (D) PROPOSED HMA BINDER COURSE, IL-19, N90, 7 3/4"
  - (E) PROPOSED POLYMERIZED HMA BINDER COURSE, N50, IL 4.75 3/4"
  - (F) PROPOSED POLYMERIZED HMA SURFACE COURSE, MIX "E", N70, 1 3/4"
  - (G) PROPOSED HMA SHOULDER, (BINDER ONLY)
  - (H) PROPOSED GUARDRAIL (SEE PLAN SHEET)
  - (I) PROPOSED TOPSOIL, 6"
  - (J) PROPOSED AGGREGATE SHOULDER, TYPE B, 10"



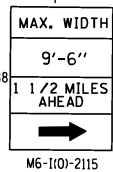
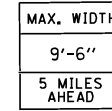
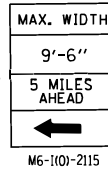
△ REVISED 7-20-2021

FILE NAME =	USER NAME = guilleumefp	DESIGNED -	REVISED -	<b>STATE OF ILLINOIS DEPARTMENT OF TRANSPORTATION</b>	<b>CONSTRUCTION STAGING: TYPICAL SECTIONS WILSON ROAD</b>			F.A.P. RTE. =	SECTION	COUNTY	TOTAL SHEETS	SHEET NO.	
								535	118N-2	LAKE	57	17	
								CONTRACT NO. 60X57					
								ILLINOIS FED. AID PROJECT					
PLOT SCALE = 100.0097' / in.				CHECKED -		REVISED -		SCALE: N/A		SHEET NO. OF SHEETS		STA. TO STA.	
PLOT DATE = 7/15/2021				DATE -		REVISED -							

**ADVANCED SIGNING DETAIL ON WILSON RD.**



\* MAXIMUM WIDTH SIGNS SHALL REMAIN INSTALLED UNTIL THE COMPLETION OF CONSTRUCTION STAGE II.



PAVEMENT MARKING TAPE, TYPE IV, 4" (WHITE)

**IL. ROUTE 60**

**WILSON ROAD**  
PROJECT LIMIT STA. 201 + 50

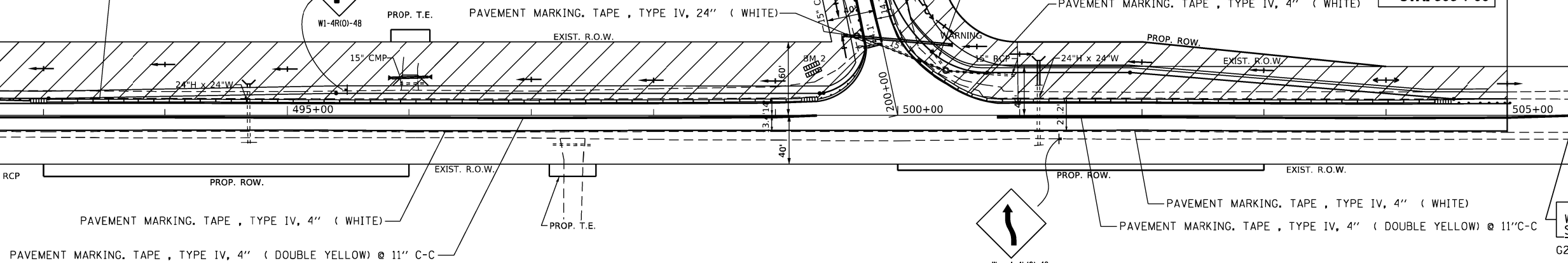
**IL. ROUTE 60**

PROJECT LIMIT STA. 505 + 00

G20-1103-6036  
END WORK ZONE SPEED LIMIT

PROJECT LIMIT STA. 492 + 00

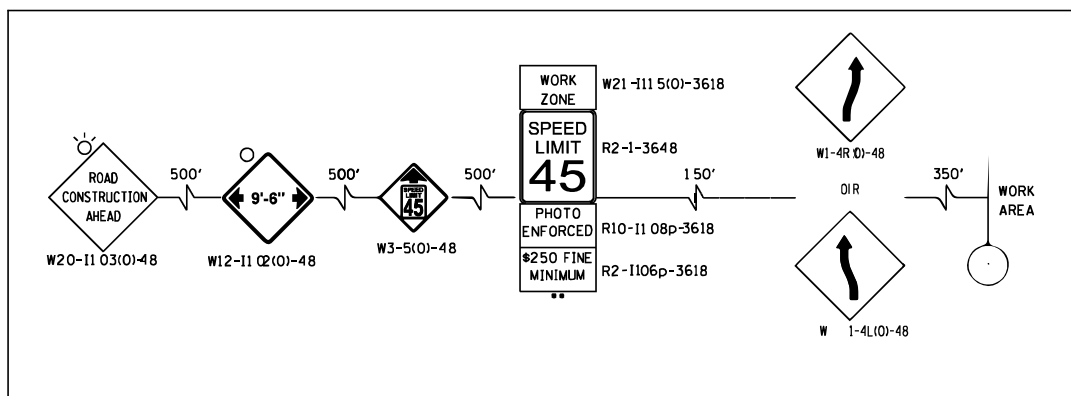
END WORK ZONE SPEED LIMIT  
G20-1103-6036



**LEGEND:**

- WORK ZONE
- DIRECTION OF TRAFFIC
- MAINTENANCE OF TRAFFIC SIGN
- TEMPORARY CONC. BARRIER
- TYPE II BARRICADES OR DRUMS  
50' C-C ON TANGENT, 20' C-C ON TAPERS AND 12' ON RADII
- TYPE III BARRICADE WITH FLASHING LIGHTS
- TEMPORARY IMPACT ATTENUATOR (FULLY REDIRECTIVE, NARROW TEST LEVEL 3)

**ADVANCED SIGNING DETAIL ON IL-60**



**NOTES:**

- \* SIGN SHALL BE TAKEN DOWN WHEN WORKERS OR FLAGGERS ARE NOT PRESENT.
- \*\* PLACE WORK ZONE SPEED LIMIT SIGNING 500' FROM WORK ZONE AND WITHIN 500' DOWNSTREAM OF IL-60 AND WILSON ROAD.

REVISD 7-20-2021

FILE NAME = P109410-sht-details.dgn

USER NAME = guilleumfp  
PLOT SCALE = 100.0000' / in.  
PLOT DATE = 7/8/2021

DESIGNED -  
DRAWN -  
CHECKED -  
DATE -

REVISED -  
REVISED -  
REVISED -  
REVISED -

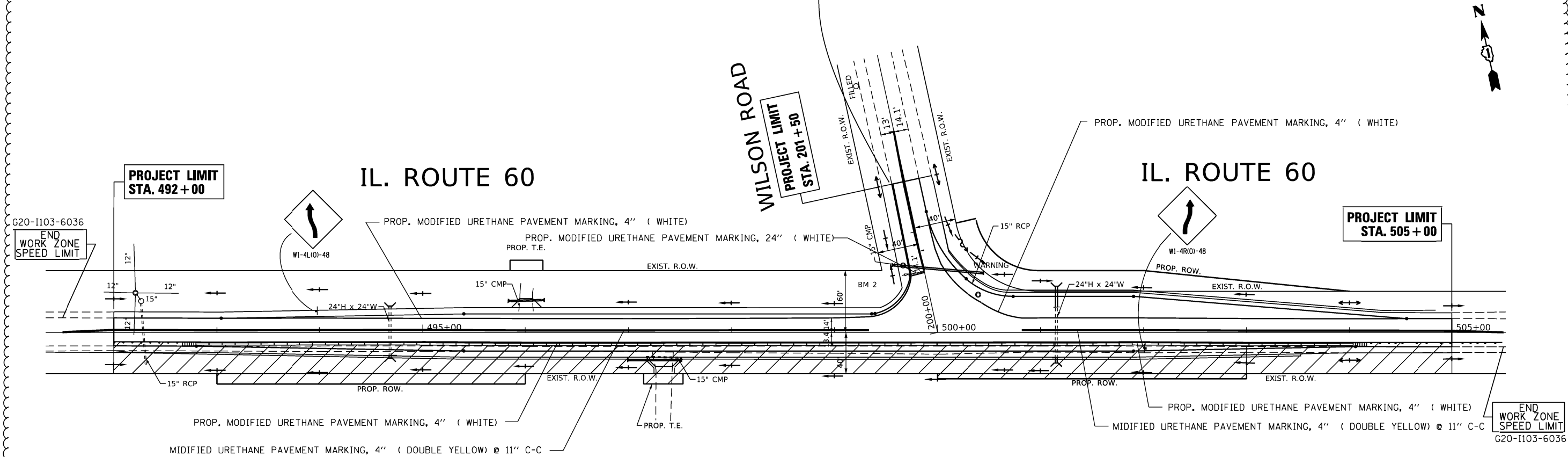
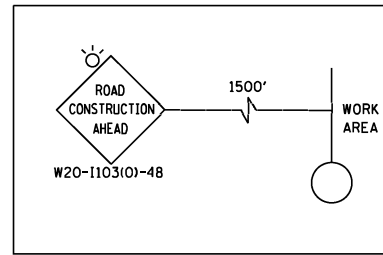
**STATE OF ILLINOIS  
DEPARTMENT OF TRANSPORTATION**

**IL. ROUTE 60 AT WILSON ROAD  
CONSTRUCTION STAGE I**

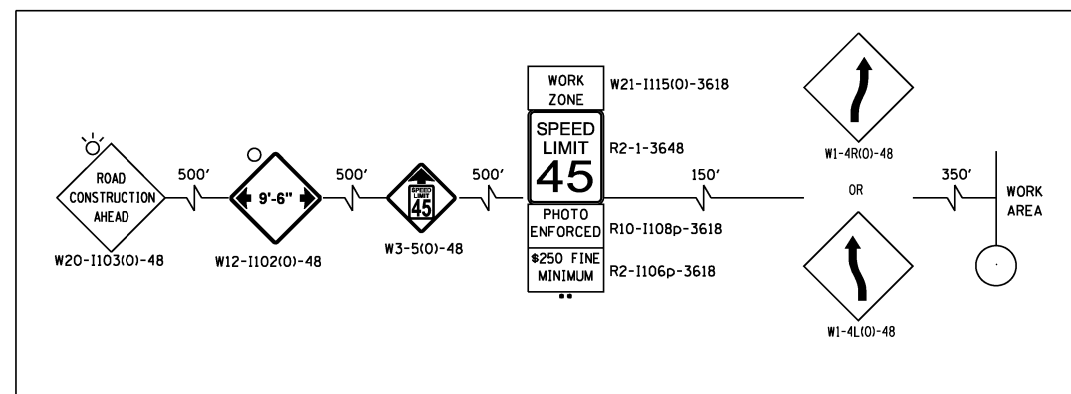
SCALE: 1" = 50' SHEET NO. OF SHEETS

F.A.P. RTE.	SECTION	COUNTY	TOTAL SHEETS	SHEET NO.
535	118N-2	LAKE	57	17A
CONTRACT NO. 60X57			ILLINOIS FED. AID PROJECT	

**ADVANCED SIGNING DETAIL ON WILSON RD.**



**ADVANCED SIGNING DETAIL ON IL-60**



**NOTES:**

- SIGN SHALL BE TAKEN DOWN WHEN WORKERS OR FLAGGERS ARE NOT PRESENT.
- PLACE WORK ZONE SPEED LIMIT SIGNING 500' FROM WORK ZONE AND WITHIN 500' DOWNSTREAM OF IL-60 AND WILSON ROAD.

**LEGEND:**

- WORK ZONE
- DIRECTION OF TRAFFIC
- MAINTENANCE OF TRAFFIC SIGN
- TEMPORARY CONC. BARRIER
- TYPE II BARRICADES OR DRUMS  
50' C-C ON TANGENT, 20' C-C ON TAPERS AND 12' ON RADII
- TYPE III BARRICADE WITH FLASHING LIGHTS

REVISED 7-20-2021

FILE NAME = P109410-sht-detail1.dgn

USER NAME = guilleumefp  
PLOT SCALE = 100.0000' / in.  
PLOT DATE = 7/15/2021

DESIGNED -  
DRAWN -  
CHECKED -  
DATE -

REVISED -  
REVISED -  
REVISED -  
REVISED -

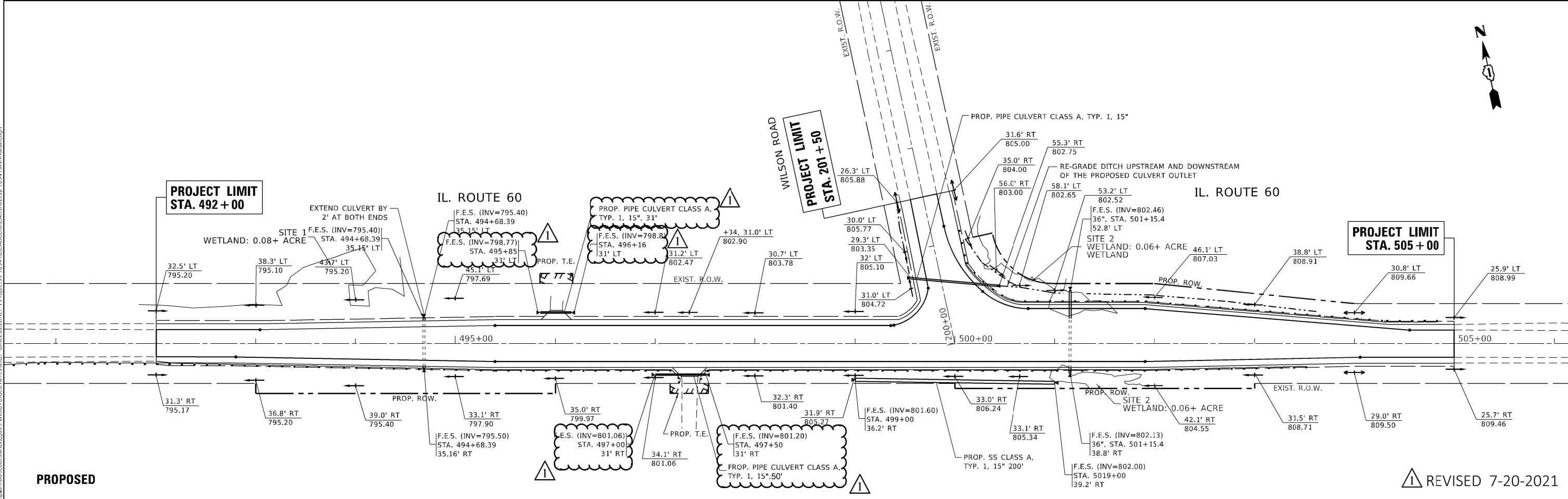
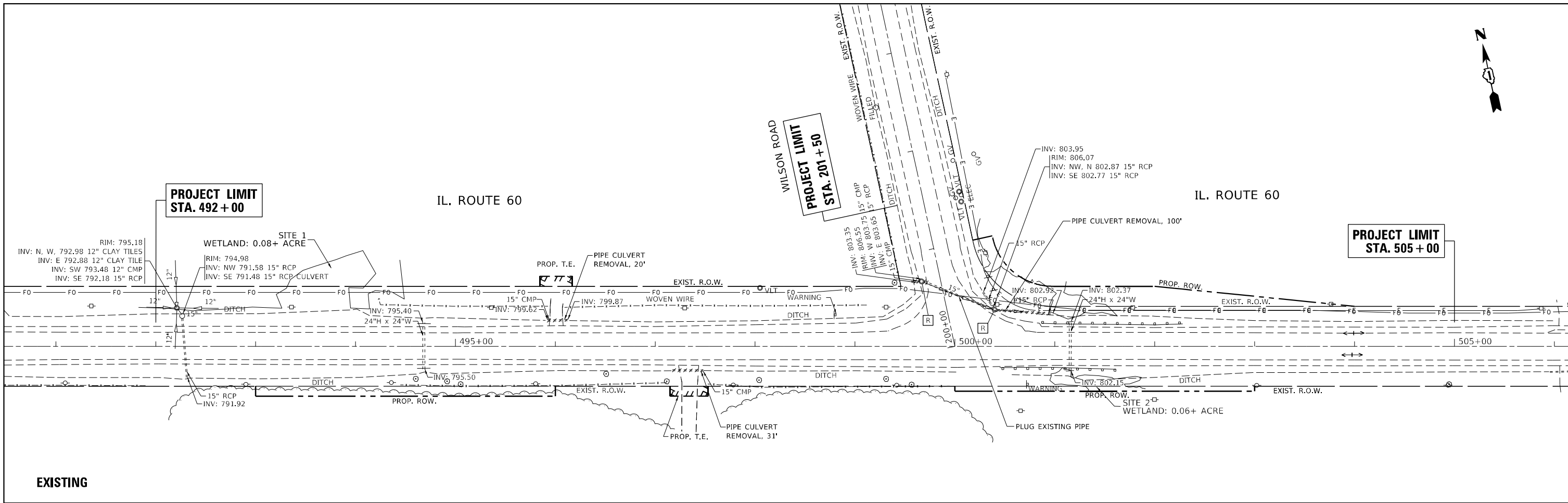
**STATE OF ILLINOIS  
DEPARTMENT OF TRANSPORTATION**

**IL. ROUTE 60 AT WILSON ROAD  
CONSTRUCTION STAGE II**

SCALE: 1" = 50' SHEET NO. OF SHEETS

F.A.P. RTE.	SECTION	COUNTY	TOTAL SHEETS	SHEET NO.
535	118N-2	LAKE	57	17B
				CONTRACT NO. 60X57
ILLINOIS FED. AID PROJECT				





▲ REVISED 7-20-2021

MODEL: Default	USER NAME = leysa	DESIGNED -	REvised -
FILE NAME: p:\data\mornom.dwg	PLOT SCALE = 100.0000' / in.	DRAWN -	REvised -
PROJECT: I:\DOT\Documents\DOT - Offices\Dir\ref: 1\Project\109410\CD\DATA\CAD\Sheet\109410-ent-drain.dgn	PLLOT DATE = 7/16/2021	CHECKED -	REvised -
		DATE -	REvised -

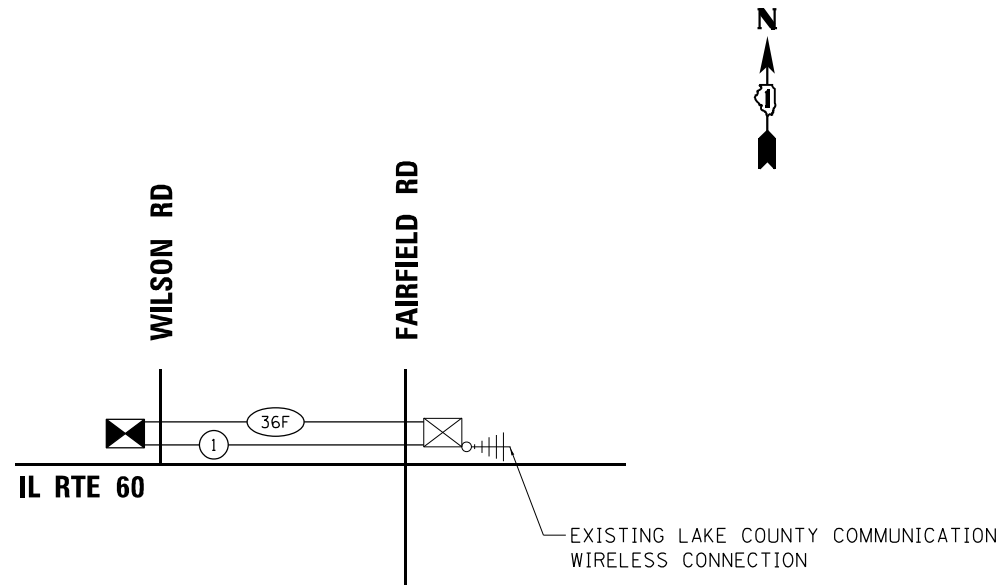

**STATE OF ILLINOIS  
DEPARTMENT OF TRANSPORTATION**

**EXISTING & PROPOSED DRAINAGE PLAN  
IL. ROUTE 60 AT WILSON ROAD**

SCALE: 1"=50'      SHEET    OF    SHEETS    STA.            TO STA.

F.A.P. RTE.	SECTION	COUNTY	TOTAL SHEETS	SHEET NO.
535	118N-2	LAKE	57	19
CONTRACT NO. 60X57				
		ILLINOIS	FED. AID PROJECT	

TS SHT NO. 13  
 FILE NAME: M:\2019\13\_CMR\8-03-2500\_PLOT\_RTB\_190 - Various Traffic\_Signals\_Design\Graphics\NO-26\011\CADD\60X57\_Sheet\_Proposed Interconnect\_Schematic.dgn



**SCHEDULE OF QUANTITIES**

ITEM DESCRIPTION	UNITS	TOTAL QTY.
UNDERGROUND CONDUIT, GALVANIZED STEEL, 2" DIA.	FOOT	2237
HEAVY-DUTY HANDHOLE	EACH	3
MAINTENANCE OF EXISTING TRAFFIC SIGNAL INSTALLATION	EACH	1
ELECTRIC CABLE IN CONDUIT, TRACER, NO. 14 1C	FOOT	2801
DRILL EXISTING HANDHOLE	EACH	1
FIBER OPTIC CABLE IN CONDUIT, NO. 62.5/125, MM12F SM 24F	FOOT	2827
LAYER II (DATA LINK) SWITCH (LCDOT)	EACH	1
* TERMINATE FIBER IN CABINET (LCDOT)	EACH	24
* SPLICE FIBER IN CABINET (LCDOT)	EACH	1
RE-OPTIMIZE TRAFFIC SIGNAL SYSTEM LEVEL 2	EACH	1



△ REVISED 7-20-2021

\* NOMINAL QUANTITY TO BE USED AS NEEDED AND AS APPROVED BY THE ENGINEER

**LAKE COUNTY PASSAGE**

**Sam Schwartz**  
 223 W. JACKSON  
 SUITE 1101  
 CHICAGO, IL 60606  
 TEL: (773) 305-0800

USER NAME = esalutz	DESIGNED - ECS	REVISED - 07/12/2021
PLOT SCALE = 100,9132' / in.	DRAWN - ECS	REVISED -
PLOT DATE = 7/12/2021	CHECKED - PAW	REVISED -
	DATE - 01/21/2021	REVISED -

**STATE OF ILLINOIS  
 DEPARTMENT OF TRANSPORTATION**

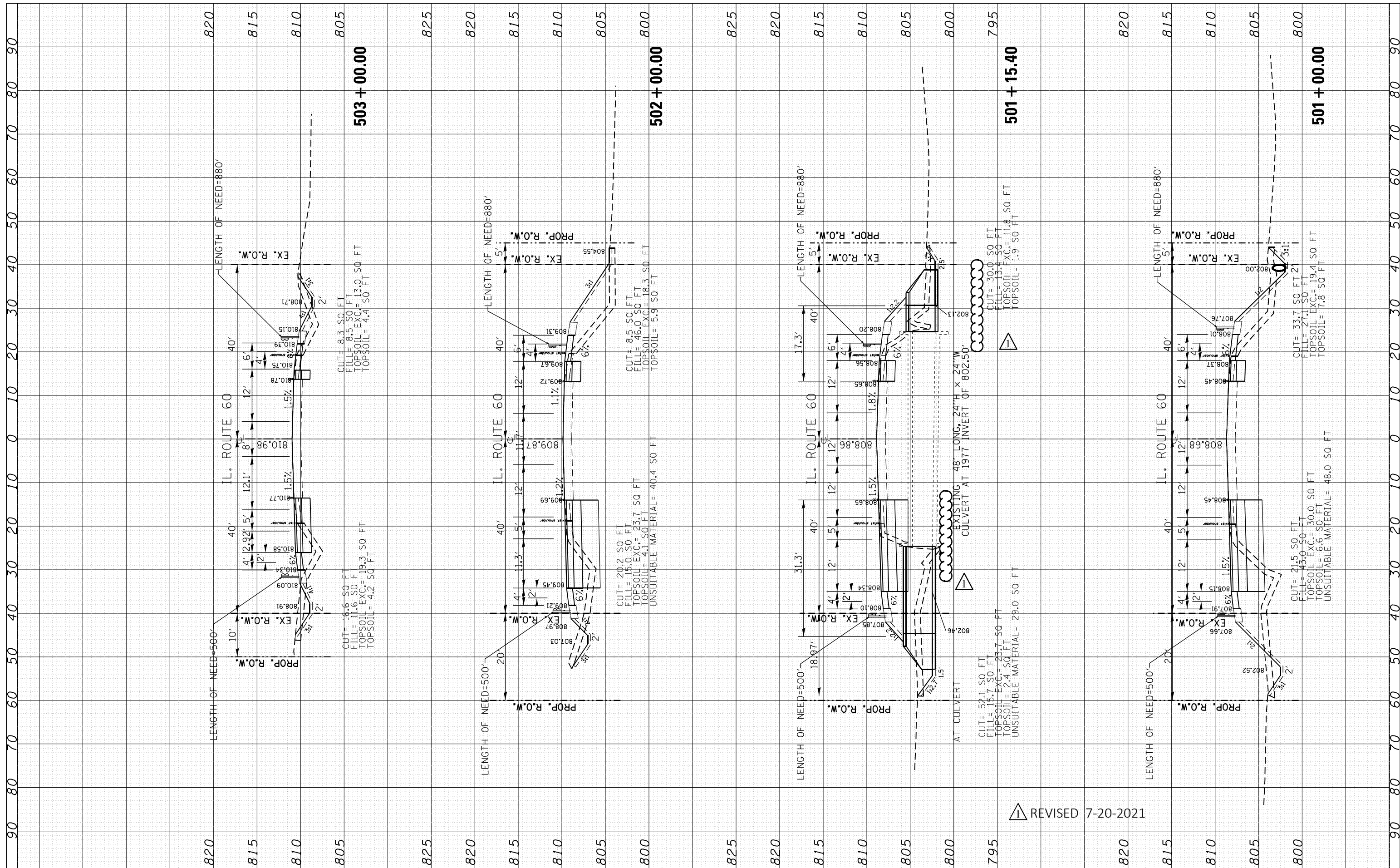
**PROPOSED INTERCONNECT SCHEMATIC AND SCHEDULE OF QUANTITIES  
 IL ROUTE 60 - WILSON RD TO FAIRFIELD RD**

SCALE: NTS SHEET OF SHEETS STA. TO STA.

F.A.P. RTE. 535	SECTION 118N-2	COUNTY LAKE	TOTAL SHEETS 57	SHEET NO. 40
			CONTRACT NO. 60X57	
		ILLINOIS FED. AID PROJECT		

NO.	AREAS CHECKED
NO.	AREAS CHECKED
NO.	AREAS CHECKED
NO.	AREAS CHECKED
NO.	AREAS CHECKED
NO.	AREAS CHECKED

NO.	AREAS CHECKED
NO.	AREAS CHECKED
NO.	AREAS CHECKED
NO.	AREAS CHECKED
NO.	AREAS CHECKED
NO.	AREAS CHECKED



△ REVISED 7-20-2021

FILE NAME =	USER NAME = parayno1	DESIGNED -	REVISED -	<b>STATE OF ILLINOIS DEPARTMENT OF TRANSPORTATION</b>	<b>CROSS SECTIONS IL. ROUTE 60 AT WILSON RD.</b>			F.A.P. RTE.	SECTION	COUNTY	TOTAL SHEETS	SHEET NO.			
Plot Scale = 20.0000' / in.	CHECKED -	REVISED -	REVISED -		SCALE:	SHEET	OF	SHEETS	STA. 501+00.00	TO STA. 503+00.00	535	118N-2	LAKE	57	55
PLOT DATE = 6/16/2021	DATE -	REVISED -	REVISED -		UNSUITABLE MATERIAL = 40.4 SO FT	UNSUITABLE MATERIAL = 29.0 SO FT	UNSUITABLE MATERIAL = 48.0 SO FT	CONTRACT NO. 60X57	ILLINOIS FED. AID PROJECT						
					UNSUITABLE MATERIAL = 23.7 SO FT	UNSUITABLE MATERIAL = 18.3 SO FT	UNSUITABLE MATERIAL = 19.4 SO FT								