

FOR INDEX OF SHEETS, SEE SHEET NO. 2

TRAFFIC DATA

ADT:

IL RTE 132 SHEEHAN DR TO DEEP LAKE RD=19,700 (2013) 28,000 (2040)

IL RTE 132 DEEP LAKE RD TO MUNN RD=21,300 (2013) 29,000 (2040)

DEEP LAKE RD=10,700 (2013) 16,000 (2040)

MUNN RD=2,900 (2013) 4,000 (2040)

DESIGN SPEED

IL RTE 132 SHEEHAN DR TO DEEP LAKE RD=40 MPH

IL RTE 132 DEEP LAKE RD TO MUNN RD=45 MPH

DEEP LAKE RD=40 MPH

MUNN RD=20 MPH

POSTED SPEED LIMIT

IL RTE 132 SHEEHAN DR TO DEEP LAKE RD=40 MPH

IL RTE 132 DEEP LAKE RD TO MUNN RD=45 MPH

DEEP LAKE RD=40 MPH

MUNN RD=20 MPH

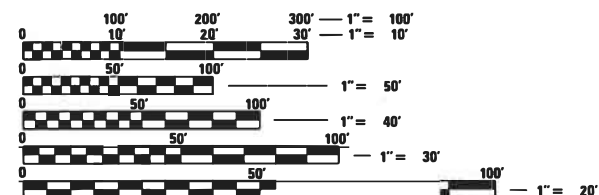
DESIGN DESIGNATION

IL RTE 132=OTHER PRINCIPAL ARTERIAL

DEEP LAKE RD=MINOR ARTERIAL

MUNN RD=LOCAL ROAD

PROJECT LOCATED IN THE VILLAGES OF
LAKE VILLA AND LINDENHURST (IN LAKE COUNTY)



FULL SIZE PLANS HAVE BEEN PREPARED USING STANDARD ENGINEERING SCALES. REDUCED SIZED PLANS WILL NOT CONFORM TO STANDARD SCALES. IN MAKING MEASUREMENTS ON REDUCED PLANS, THE ABOVE SCALES MAY BE USED.

J.U.L.I.E.
JOINT UTILITY LOCATION INFORMATION FOR EXCAVATION
1-800-892-0123
OR 811

PROJECT ENGINEER : FIRAS UDDIN (847) 705-4552
PROJECT MANAGER : MATTHEW ROTHENBERG (847) 705-4230

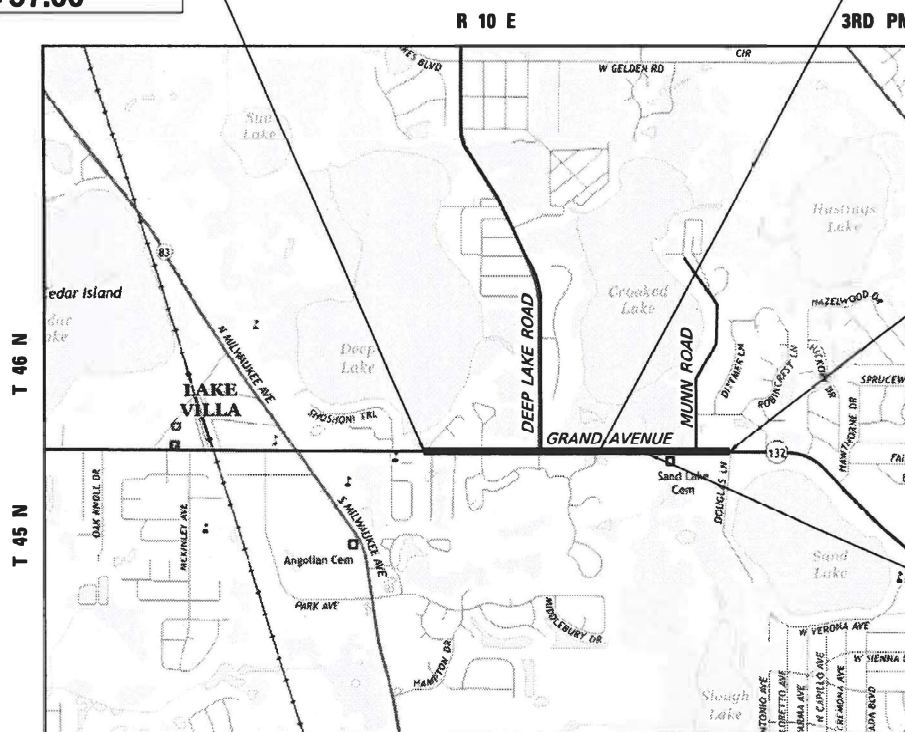
CONTRACT NO. 62D86

STATE OF ILLINOIS
DEPARTMENT OF TRANSPORTATION

**PROPOSED
HIGHWAY PLANS**

FAP ROUTE 541: IL ROUTE 132 (GRAND AVENUE)
SECTION A-W&RS-2
FEDERAL PROJECT NO.: NHPP-JOLD (648)
DEEP LAKE ROAD TO MUNN ROAD
ROADWAY WIDENING AND RESURFACING
DRY LAND BRIDGE AND BOX CULVERT REPLACEMENT
LAKE COUNTY
C-91-116-17

BEGIN IMPROVEMENT
STA 36+57.00



LOCATION MAP
N.T.S.

LAKE VILLA TOWNSHIP

GROSS & NET LENGTH = 4,711 FT. = 0.89 MILE

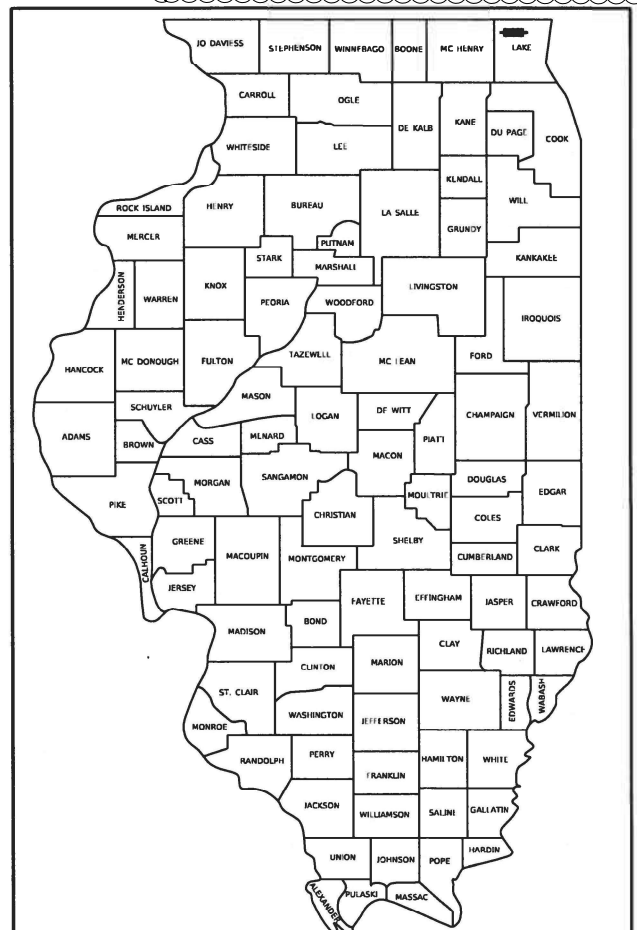
DRY LAND BRIDGE REPLACEMENT
EXIST SN 049-D002
PROP SN 049-D030
BEGIN STA 61+17.50
END STA 70+58.50

END IMPROVEMENT
STA 83+68.23

BOX CULVERT REPLACEMENT
EXIST SN 049-0586
PROP SN 049-0615

F.A.P. RTE.	SECTION	COUNTY	TOTAL SHEETS	SHEET NO.
541	A-W&RS-2	LAKE	205	1
ILLINOIS			CONTRACT NO. 62D86	

* 205 + 3 = 208 TOTAL SHEETS
D-91-116-17



LOCATION OF SECTION INDICATED THIS: -

STATE OF ILLINOIS
DEPARTMENT OF TRANSPORTATION

SUBMITTED APRIL 20, 2021
Joe Firas REGIONAL ENGINEER

June 25, 2021
Joe Firas ENGINEER OF DESIGN AND ENVIRONMENT

June 25, 2021
James J. Gu DIRECTOR OF HIGHWAYS PROJECT IMPLEMENTATION

PRINTED BY THE AUTHORITY
OF THE STATE OF ILLINOIS

<p>NICHOLAS J. SCHILLING III, P.E. NO. 062-059216 EXP. DATE: 11/30/21 APPLY TO DRAWINGS: 1-54, 95-103, 190-205</p>	<p>YINGHONG CAO, P.E., S.E. NO. 081.008508 EXP. DATE: 11/30/22 APPLY TO DRAWINGS: 126-172</p>	<p>DRAINAGE JOEL I. FEINSTEIN, P.E. NO. 062-046106 EXP. DATE: 11/30/21 APPLY TO DRAWINGS: 65-70</p>	<p>SRIHAN ADHIKARI, P.E. NO. 062-069784 EXP. DATE: 11/30/21 APPLY TO DRAWINGS: 104-125</p>	<p>CARL GUTOWSKI, P.E. NO. 062-057132 EXP. DATE: 11/30/21 APPLY TO DRAWINGS: 95-94</p>
--	---	---	--	--

INDEX OF SHEETS

1	COVER SHEET
2	INDEX OF SHEETS AND STATE STANDARDS
3	GENERAL NOTES
4-19	SUMMARY OF QUANTITIES
20-22	TYPICAL SECTIONS
23-26	SCHEDULE OF QUANTITIES
27-30	ALIGNMENT, TIES, AND BENCHMARKS
31-32	REMOVAL PLANS
33-36	ROADWAY PLAN AND PROFILE
37-40	ADA PLANS AND DETAILS
41	DETOUR PLAN - TRAFFIC CONTROL
42	SUGGESTED STAGES OF CONSTRUCTION AND TRAFFIC CONTROL PLAN GENERAL NOTES
43-45	SUGGESTED STAGES OF CONSTRUCTION AND TRAFFIC CONTROL PLAN TYPICAL SECTIONS
46-54	SUGGESTED STAGES OF CONSTRUCTION AND TRAFFIC CONTROL PLAN
55	EROSION CONTROL GENERAL NOTES
56-64	EROSION AND SEDIMENTATION CONTROL PLAN
65-70	DRAINAGE AND UTILITY PLAN AND PROFILE
71-78	WATER LINE PLANS
79-82	SUBSURFACE ENGINEERING PLANS
83-94	RIGHT-OF-WAY PLATS
95	INTERSECTION GRADING DETAILS
96-101	PAVEMENT MARKING PLANS
102-103	LANDSCAPE PLANS
104-125C	TRAFFIC SIGNAL SHEETS
126-164	BRIDGE PLANS (SN 049-D030)
165-172	CULVERT PLANS (SN 049-0615)
173-189	IDOT DISTRICT ONE DETAIL SHEETS
190-205	CROSS SECTIONS

COMMITMENTS

- THE RESIDENT ENGINEER SHALL CONTACT THE LAKE COUNTY FOREST PRESERVE DISTRICT (LCFPD) AT 847-367-6640 PRIOR TO THE START OF CONSTRUCTION TO INFORM THEM OF THE INITIATION OF CONSTRUCTION ACTIVITIES NEAR THEIR PROPERTIES.

IDOT DISTRICT ONE STANDARDS

BD-01	DRIVEWAY DETAILS - DISTANCE BETWEEN R.O.W. AND FACE OF CURB & EDGE OF SHOULDER > = 15' (4.5 m)
BD-02	DRIVEWAY DETAILS - DISTANCE BETWEEN ROW AND FACE OF CURB < 15' (4.5 m)
BD-07	DETAIL OF STORM SEWER CONNECTION TO EXISTING SEWER
BD-08	DETAILS FOR FRAMES AND LIDS ADJUSTMENT WITH MILLING
BD-24	CURB OR CURB GUTTER REMOVAL AND REPLACEMENT
BD-32	BUTT JOINT AND HMA TAPER DETAILS
BD-36	FIRE HYDRANT TO BE MOVED
TC-10	TRAFFIC CONTROL AND PROTECTION FOR SIDES ROADS, INTERSECTIONS, AND DRIVEWAYS
TC-11	TYPICAL APPLICATIONS RAISED REFLECTIVE PAVEMENT MARKERS (SNOW-PLOW RESISTANT)
TC-13	DISTRICT ONE TYPICAL PAVEMENT MARKINGS
TC-14	TRAFFIC CONTROL AND PROTECTION AT TURN BAYS (TO REMAIN OPEN TO TRAFFIC)
TC-16	SHORT TERM PAVEMENT MARKING LETTERS AND SYMBOLS
TC-21	DETOUR SIGNING FOR CLOSING STATE HIGHWAYS
TC-22	ARTERIAL ROAD INFORMATION SIGN
TC-26	DRIVEWAY ENTRANCE SIGNING
TS-02	MAST ARM MOUNTED STREET NAME SIGNS
TS-03	HANDHOLE TO INTERCEPT EXISTING CONDUIT
TS-05	DISTRICT ONE STANDARD TRAFFIC SIGNAL DESIGN DETAILS
TS-07	DISTRICT 1 - DETECTOR LOOP INSTALLATION DETAILS FOR ROADWAY RESURFACING

IDOT HIGHWAY STANDARDS

000001-08	STANDARD SYMBOLS, ABBREVIATIONS AND PATTERNS
280001-07	TEMPORARY EROSION CONTROL SYSTEMS
424001-11	PERPENDICULAR CURB RAMPS FOR SIDEWALKS
424006-05	DIAGONAL CURB RAMPS FOR SIDEWALKS
424011-04	CORNER PARALLEL CURB RAMPS FOR SIDEWALKS
424026-03	ENTRANCE / ALLEY PEDESTRIAN CROSSING
515001-04	NAME PLATE FOR BRIDGES
542301-03	PRECAST REINFORCED CONCRETE FLARED END SECTION
601001-05	PIPE UNDERDRAINS
602001-02	CATCH BASIN TYPE A
602301-04	INLET - TYPE A
602401-07	PRECAST MANHOLE, TYPE A, 4' (1.22 m) DIAMETER
602402-03	PRECAST MANHOLE, TYPE A, 5' (1.52 m) DIAMETER
602406-11	PRECAST MANHOLE, TYPE A, 6' (1.83 m) DIAMETER
602601-06	PRECAST REINFORCED CONCRETE FLAT SLAB TOP
602701-02	MANHOLE STEPS
604001-05	FRAME AND LIDS, TYPE 1
604036-03	GRATE, TYPE 8
604091-04	FRAME AND GRATE, TYPE 24
606006-04	CONCRETE CURB TYPE B AND COMBINATION CONCRETE CURB AND GUTTER
606301-04	PC CONCRETE ISLANDS AND MEDIANS
606306-04	CORRUGATED PC CONCRETE MEDIANS
664001-02	CHAIN LINK FENCE
701006-05	OFF-RD OPERATIONS, 2L, 2W, 15' (4.5 m) TO 24" (600 mm) FROM PAVEMENT EDGE
701011-04	OFF-RD MOVING OPERATIONS, 2L, 2W, DAY ONLY
701101-05	OFF-RD OPERATIONS, MULTILANE, 15' (4.5 m) TO 24" (600 mm) FROM PAVEMENT EDGE
701301-04	LANE CLOSURE, 2L, 2W, SHORT TIME OPERATIONS
701311-03	LANE CLOSURE, 2L, 2W, MOVING OPERATIONS - DAY ONLY
701421-08	LANE CLOSURE, MULTILANE, DAY OPERATIONS ONLY, FOR SPEED GREATER THAN OR EQUAL TO 45 MPH TO 55 MPH
701422-10	LANE CLOSURE, MULTILANE, FOR SPEEDS GREATER THAN OR EQUAL TO 45 MPH TO 55 MPH
701426-09	LANE CLOSURE, MULTILANE, INTERMITTENT OR MOVING OPERATIONS, FOR SPEEDS GREATER THAN OR EQUAL TO 45 MPH
701427-05	LANE CLOSURE, MULTILANE, INTERMITTENT OR MOVING OPERATIONS, FOR SPEEDS LESS THAN OR EQUAL TO 40 MPH
701501-06	URBAN LANE CLOSURE, 2L, 2W, UNDIVIDED
701601-09	URBAN SINGLE LANE CLOSURE, MULTILANE, 1W OR 2W WITH NONTRAVERSABLE MEDIAN
701606-10	URBAN SINGLE LANE CLOSURE, MULTILANE, 2W, WITH MOUNTABLE MEDIAN
701701-10	URBAN LANE CLOSURE, MULTILANE INTERSECTION
701801-06	SIDEWALK CORNER OR CROSSWALK CLOSURE
701901-08	TRAFFIC CONTROL DEVICES
704001-08	TEMPORARY CONCRETE BARRIER
720001-01	SIGN PANEL MOUNTING DETAILS
720006-04	SIGN PANEL ERECTION DETAILS
729001-01	APPLICATIONS OF TYPES A AND B METAL POSTS (FOR SIGNS AND MARKERS)
780001-05	TYPICAL PAVEMENT MARKINGS
781001-04	TYPICAL APPLICATIONS RAISED REFLECTIVE PAVEMENT MARKERS
782006-01	GUARDRAIL AND BARRIER WALL REFLECTOR MOUNTING DETAILS

MODEL: Default
 FILE: \\patricke.com\pub\entel\comp\patricke\pww\07\Documents\10017177\03\12_Drefm\12_3_CADD\SHEETS\62D86-SHT-INDEX-01.dgn



USER NAME = nschiing	DESIGNED - BAW	REVISED - 07/19/2021
	DRAWN - BAW	REVISED -
PLOT SCALE = 100,0000' / in.	CHECKED - NJS	REVISED -
PLOT DATE = 7/15/2021	DATE - 3/30/21	REVISED -

**STATE OF ILLINOIS
DEPARTMENT OF TRANSPORTATION**

INDEX OF SHEETS AND STATE STANDARDS

SCALE: SHEET 1 OF 1 SHEETS STA. TO STA.

REVISED SHEET 7/16/2021

F.A.P. RTE.	SECTION	COUNTY	TOTAL SHEETS	SHEET NO.
541	A-WGRS-2	LAKE	205	2
CONTRACT NO. 62D86				
ILLINOIS FED. AID PROJECT				

S.P.	ITEM NO.	ITEM DESCRIPTION	UNIT	URBAN TOTAL QUANTITY	CONSTRUCTION TYPE CODES										
					ROADWAY 0004	BRIDGE REPLACEMENT SN 049-D030 0010	CULVERT REPLACEMENT SN 049-0615 0010	SIDEWALK FROM DEEP LAKE RD TO MUNN RD 0021	SHARED USE PATH FROM DEEP LAKE RD TO MUNN RD 0028	TRAFFIC SIGNALS IL ROUTE 132 @ DEEP LAKE RD 0021	TRAFFIC SIGNALS IL ROUTE 132 @ MUNN RD 0021	TRAFFIC SIGNAL INTERCONNECT 0021	IL ROUTE 132 PRE-EMPTION EQUIPMENT 0021	UTILITIES 0043	UTILITIES 0043
					80% FED 20% STATE	80% FED 20% STATE	80% FED 20% STATE	80% FED 20% LINDENHURST	80% FED 20% LINDENHURST	80% FED 10% STATE 5% LAKE VILLA 5% LAKE COUNTY	80% FED 20% STATE	80% FED 20% STATE	100% LAKE VILLA FPD	100% LINDENHURST	80% FED 20% STATE
*	X0324085	EMERGENCY VEHICLE PRIORITY SYSTEM LINE SENSOR CABLE, NO. 20 3/C	FOOT	187									187		
*	X0324599	ROD AND CLEAN EXISTING CONDUIT	FOOT	200						100		100			
*	X0325318	LIGHTWEIGHT CELLULAR CONCRETE FILL	CU YD	5,365				2,820	2,545						
*	X0326309	RELOCATE EXISTING REMOTE CONTROLLED VIDEO SYSTEM (SPECIAL) (LCDOT)	EACH	1						1					
*	X0326310	RELOCATE EXISTING SWITCH (SPECIAL) (LCDOT)	EACH	4						2		2			
*	X0327406	RELOCATE EXISTING VIDEO ENCORER, SPECIAL (LCDOT)	EACH	2						2					
*	X0800003	COARSE AGGREGATE BACKFILL (SPECIAL)	CU YD	671			671								
*	X0900064	MEMBRANE WATERPROOFING SYSTEM FOR BURIED STRUCTURES	SQ YD	197			197								
*	X1200050	BOX CULVERT REMOVAL	FOOT	67			67								
*	X1200062	PREPARED SOIL, 12"	SQ YD	572	572										
*	X1200090	TRAVERSABLE PIPE GRATE, SPECIAL	EACH	1	1										
*	X1200238	WATER MAIN FITTINGS	POUND	175											175
*	X1400012	REMOVE AND REINSTALL FIBER OPTIC CABLE IN CONDUIT	FOOT	2,898								2,898			
*	X1400150	SERVICE INSTALLATION, GROUND MOUNTED, METERED	EACH	1						1					
*	X1400367	PEDESTRIAN SIGNAL POST, 10 FT.	EACH	1						1					
*	X1400217	TERMINATE FIBER IN CABINET (LCDOT)	EACH	4						2		2			
*	X1400378	PEDESTRIAN SIGNAL POST, 5 FT.	EACH	3						3					
*	X2600012	REMOVE AND RELOCATE SIGN PANEL AND POLE ASSEMBLY	EACH	1	1										
*	X5610748	WATER MAIN LINE STOP 8"	EACH	4											4
*	X5630708	CONNECTION TO EXISTING WATER MAIN 8"	EACH	4											4

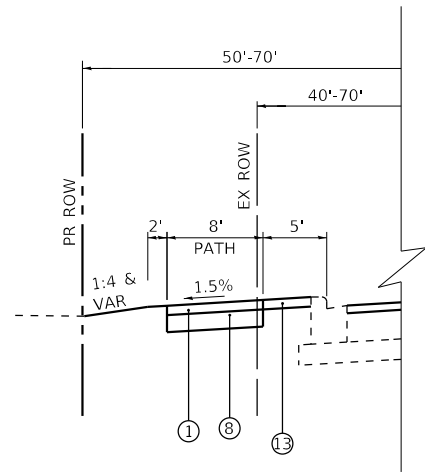
* SPECIALTY ITEM

REVISD SHEET 7/16/2021 REV-SEP

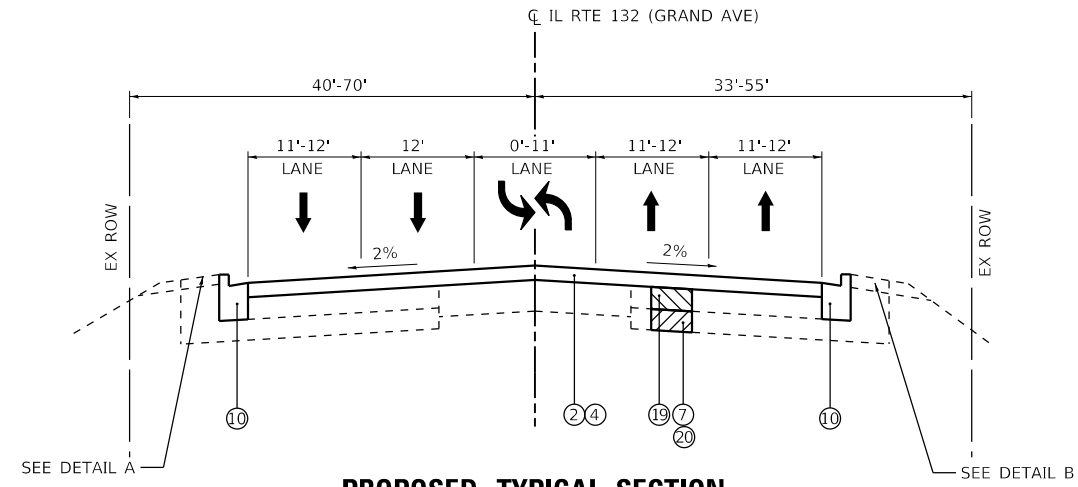
	USER NAME = nschilling	DESIGNED - BAW	REVISED -	STATE OF ILLINOIS DEPARTMENT OF TRANSPORTATION	SUMMARY OF QUANTITIES				F.A.P. RTE. 541	SECTION A-W&RS-2	COUNTY LAKE	TOTAL SHEETS 205	SHEET NO. 16
	PLOT SCALE = 100.0000' / in.	CHECKED - NJS	REVISED -						CONTRACT NO. 62D86				
	PLOT DATE = 5/12/2021	DATE - 3/30/21	REVISED -						SCALE:	SHEET 13 OF 16 SHEETS	STA.	TO STA.	ILLINOIS FED. AID PROJECT



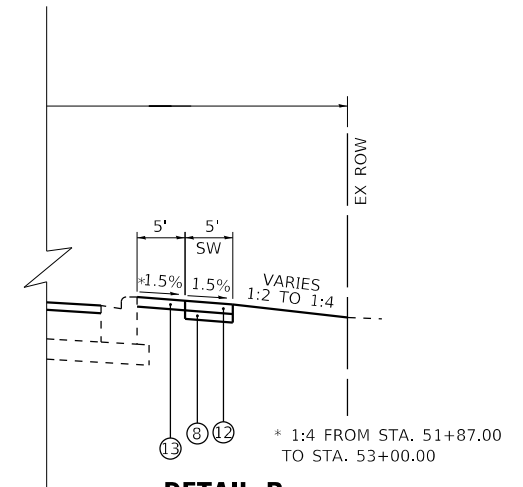
MODEL: Default
 FILE: \\patricke-pw-bentley.com\patricke-pw-07\Documents\62D86\1777-03013_Design\12-CAD\DWG\13-62D86-SHT-500.dwg



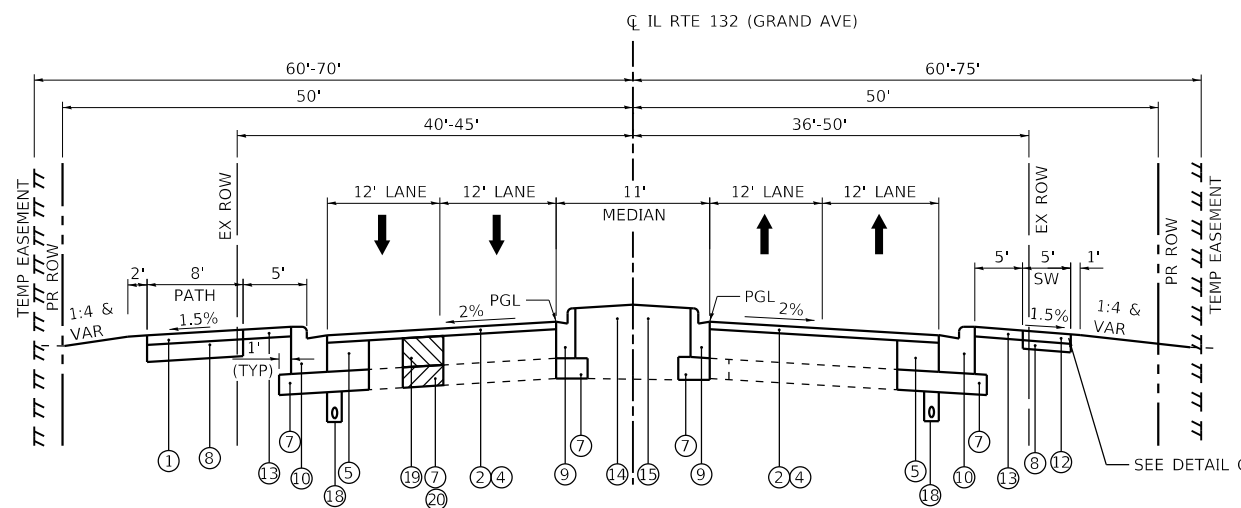
DETAIL A
STA. 51+72.00 TO STA. 55+02.00



PROPOSED TYPICAL SECTION
STA. 36+57.00 TO STA. 55+02.00

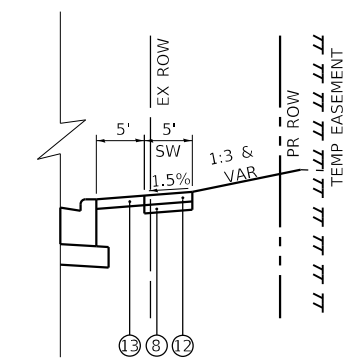


DETAIL B
STA. 51+32.00 TO STA. 55+02.00



PROPOSED TYPICAL SECTION
STA. 55+02.00 TO STA. 61+17.50

APPROACH SLAB
STA. 60+87.50 TO STA. 61+17.50



DETAIL C
STA. 57+62.00 TO STA. 59+90.00
15' TRANSITION FROM -1.5% TO +1.5%
STA. 57+62.00 TO STA. 57+77.00
STA. 59+75.00 TO STA. 59+90.00

HOT MIX ASPHALT MIXTURE REQUIREMENTS		QUALITY MANAGEMENT PROGRAM (QMP)
MIXTURE TYPE	AIR VOIDS @ Ndes	
PAVEMENT RESURFACING / WIDENING		
1 1/4" POLYMERIZED HOT-MIX ASPHALT SURFACE COURSE, MIX "E", N70 (IL 9.5 mm)	4% @ 70 Gyr.	QCP
3/4" POLYMERIZED HOT-MIX ASPHALT BINDER COURSE, IL-4.75, N50	3.5% @ 50 Gyr.	QC/QA
7 1/2" HOT-MIX ASPHALT BASE COURSE WIDENING, (HMA BINDER IL-19.0)	4% @ 90 Gyr.	QC/QA
RECONSTRUCTION		
2" POLYMERIZED HOT-MIX ASPHALT SURFACE COURSE, MIX "E", N70 (IL 9.5 mm)	4% @ 70 Gyr.	QCP
8" HOT-MIX ASPHALT BASE COURSE, (HMA BINDER IL-19.0)	4% @ 90 Gyr.	QC/QA
SHARED USE PATH		
2" HOT-MIX ASPHALT SURFACE COURSE, MIX "D", N50 (IL 9.5 mm)	4% @ 50 Gyr.	QC/QA
HOT-MIX ASPHALT DRIVEWAY PAVEMENT, 10"		
2" HOT-MIX ASPHALT SURFACE COURSE, MIX "D", N50 (IL 9.5 mm)	4% @ 50 Gyr.	QC/QA
8" HOT-MIX ASPHALT BASE COURSE, (HMA BINDER IL-19.0)	4% @ 50 Gyr.	QC/QA
PATCHING		
CLASS D PATCHES, 12" (HMA BINDER IL-19 mm)	4% @ 70 Gyr.	QC/QA

QMP DESIGNATIONS: QUALITY CONTROL/QUALITY ASSURANCE (QC/QA); QUALITY CONTROL FOR PERFORMANCE (QCP); PAY FOR PERFORMANCE (PFP)

- NOTES:**
- THE UNIT WEIGHT USED TO CALCULATE ALL HMA SURFACE MIXTURE QUANTITIES IS 112 LBS/SQ YD/IN.
 - MILLING SHALL BE DONE PRIOR TO PATCHING.
 - THE "AC TYPE" FOR POLYMERIZED HMA MIXES SHALL BE "SBS/SBR PG 76 -22" AND FOR NON-POLYMERIZED HMA THE "AC TYPE" SHALL BE "PG 64 -22" UNLESS MODIFIED BY DISTRICT ONE SPECIAL PROVISIONS.
 - FOR USE OF RECYCLED MATERIALS SEE SPECIAL PROVISIONS.
 - QUALITY MANAGEMENT PROGRAM (QMP) IDENTIFIES THE PARTICULAR QUALITY CONTROL SPECIFICATION THAT APPLIES TO THE HMA MIXTURE.
 - THE LONGITUDINAL JOINT SEALANT SHALL BE PLACED OVER THE POLYMERIZED HMA BC IL-4.75 N50. IT SHALL ALSO BE APPLIED BEFORE AND AFTER TOP HMA BASE COURSE.

- NOTES:**
- ALL PROPOSED CONCRETE MEDIANS SIX FEET WIDE OR LESS SHALL BE Poured MONOLITHICALLY AND THE OPTIONAL CONSTRUCTION JOINT SHOWN ON IDOT HIGHWAY STANDARD 606301 WILL NOT BE ALLOWED.

PROPOSED LEGEND

- 2" HOT-MIX ASPHALT SURFACE COURSE, IL-9.5, MIX "D", N50
- 1 1/4" POLYMERIZED HOT-MIX ASPHALT SURFACE COURSE, IL-9.5, MIX E, N70
- 2" POLYMERIZED HOT-MIX ASPHALT SURFACE COURSE, IL-9.5, MIX E, N70
- 3/4" POLYMERIZED HOT-MIX BINDER COURSE, IL-4.75, N50
- 7 1/2" HOT-MIX ASPHALT BASE COURSE WIDENING
- 8" HOT-MIX ASPHALT BASE COURSE
- 12" AGGREGATE SUBGRADE IMPROVEMENT
- SUBBASE GRANULAR MATERIAL, TYPE B 6"
- COMBINATION CONCRETE CURB AND GUTTER, TYPE B-6.12
- COMBINATION CONCRETE CURB AND GUTTER, TYPE B-6.24
- CONCRETE DECK
- PORTLAND CEMENT CONCRETE SIDEWALK, 5"
- TOPSOIL FURNISH AND PLACE, 4", SEEDING, CLASS 2A
- TOPSOIL FURNISH AND PLACE, 24", SEEDING, CLASS 2A
- CONCRETE MEDIAN, TYPE SB-6.12 (FOR MEDIAN WIDTH LESS THAN 6')
- LIGHTWEIGHT CELLULAR CONCRETE FILL (LCCF) CLASS 1
- EMBANKMENT CAP OVER LCCF
- PIPE UNDERDRAINS
- CLASS D PATCHES, 12" (AT LOCATIONS DESIGNATED BY THE ENGINEER)
- GEOTECHNICAL FABRIC FOR GROUND STABILIZATION (AT LOCATIONS DESIGNATED BY THE ENGINEER)
- TEMPORARY SHEET PILING

REVISED 7/19/2021

MODEL: Default FILE: A:\a11\c:\pwworkspace\benjerry.com\barfick\cc-20\07\Documents\10017177\030113_Derfm12_3_CADD\SHETS\62086-SHT-TYP-001.dgn



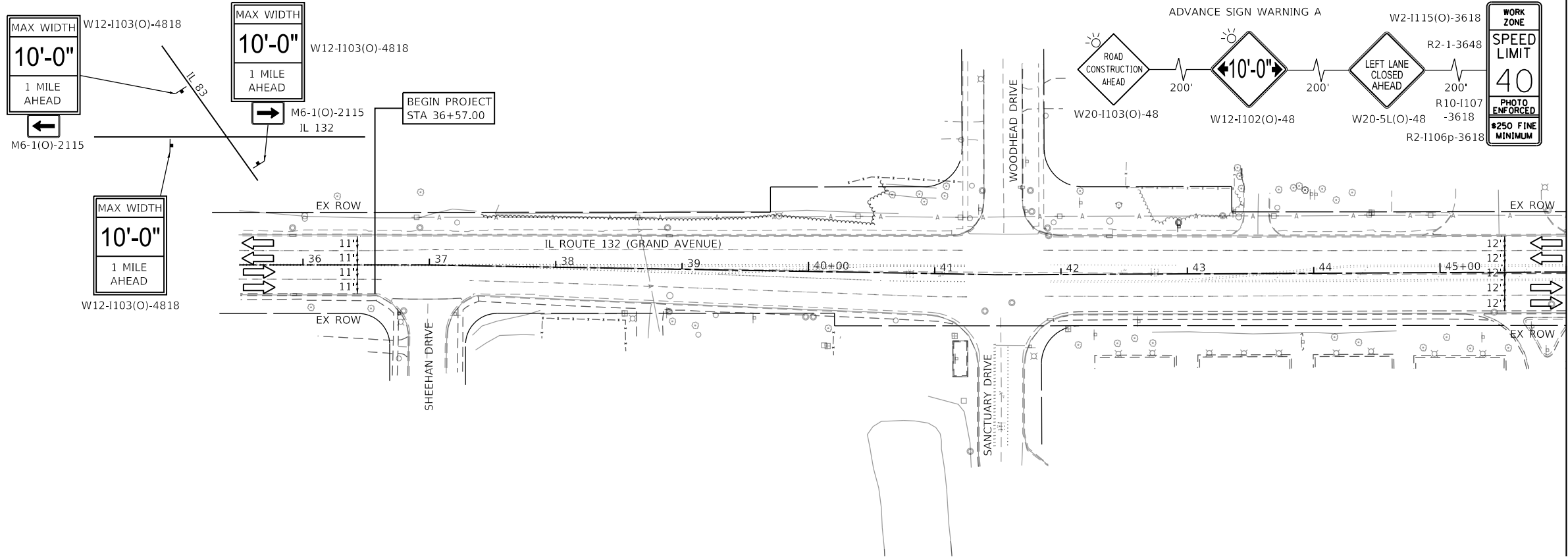
USER NAME = nschilling	DESIGNED - JAC	REVISED - 07/19/2021
PLOT SCALE = 20.0000' / in.	DRAWN - PAK	REVISED -
PLOT DATE = 7/16/2021	CHECKED - NJS	REVISED -
	DATE - 3/30/21	REVISED -

**STATE OF ILLINOIS
DEPARTMENT OF TRANSPORTATION**

**ILLINOIS ROUTE 132 GRAND AVENUE
PROPOSED TYPICAL SECTIONS**

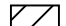
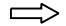

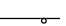



SCALE: NTS SHEET 2 OF 3 SHEETS STA. 36+57.00 TO STA. 61+17.50

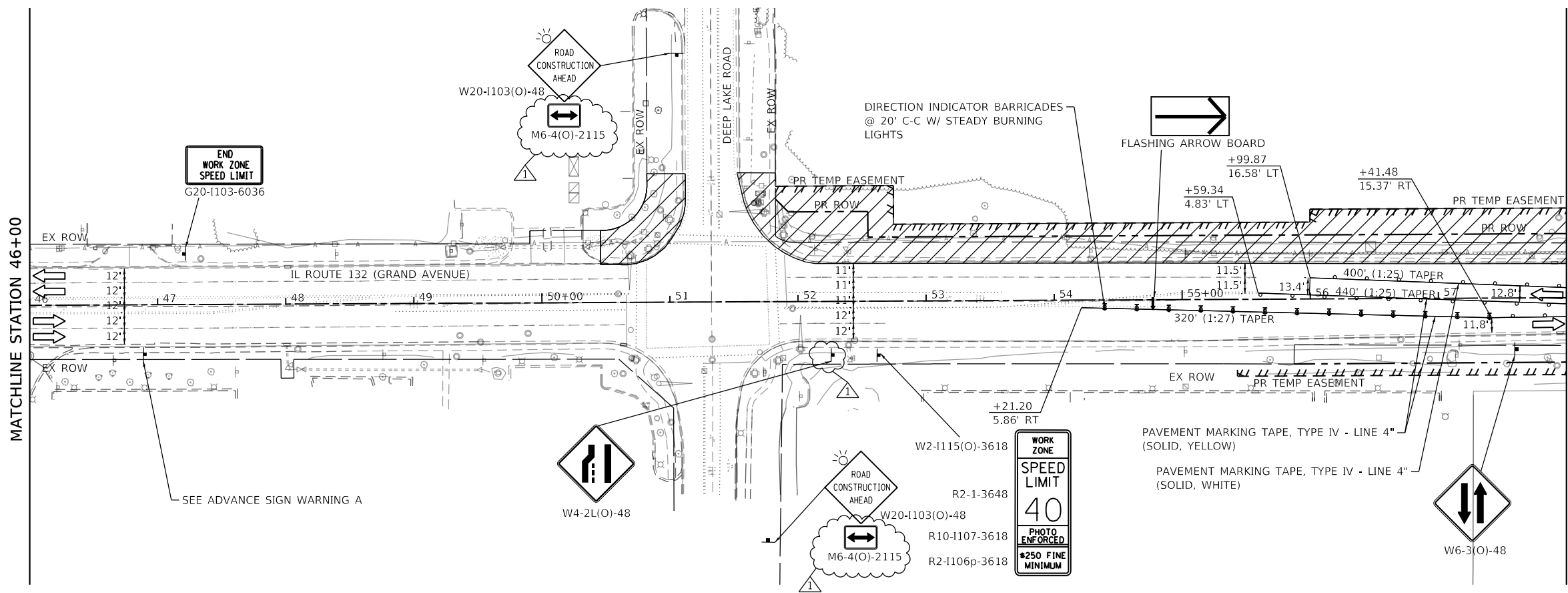
F.A.P. RTE.	SECTION	COUNTY	TOTAL SHEETS	SHEET NO.
541	A-W&RS-2	LAKE	205	21
CONTRACT NO. 62DB6				
ILLINOIS FED. AID PROJECT				



MATCHLINE STATION 46+00

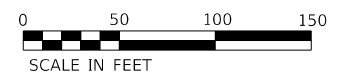
MAINTENANCE OF TRAFFIC LEGEND:

-  CONSTRUCTION WORK ZONE
-  DIRECTION OF TRAFFIC
-  CONSTRUCTION SIGN
-  DRUMS @ 50' CENTERS (20' CTRS. ALONG TAPERS)
-  TEMPORARY CONCRETE BARRIER WITH DOUBLE-SIDED TYPE C CRYSTAL MARKERS
-  IMPACT ATTENUATOR, TEMPORARY (FULLY REDIRECTIVE, NARROW) TEST LEVEL 2
-  TYPE III BARRICADE



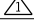
MATCHLINE STATION 46+00

MATCHLINE STATION 58+00



MODEL: Default
FILE: \\p10101\cadd\p10101\cadd\p10101\1777\030112_Draft\12_3_CADD\SHEETS\62DB86-S1R1-MOT-5T01-01.dgn



USER NAME = nschilling	DESIGNED - ACN	REVISED -  07/19/2021
PLOT SCALE = 100,0000' / in.	DRAWN - ACN	REVISED -
PLOT DATE = 7/13/2021	CHECKED - NJS	REVISED -
	DATE - 3/30/21	REVISED -

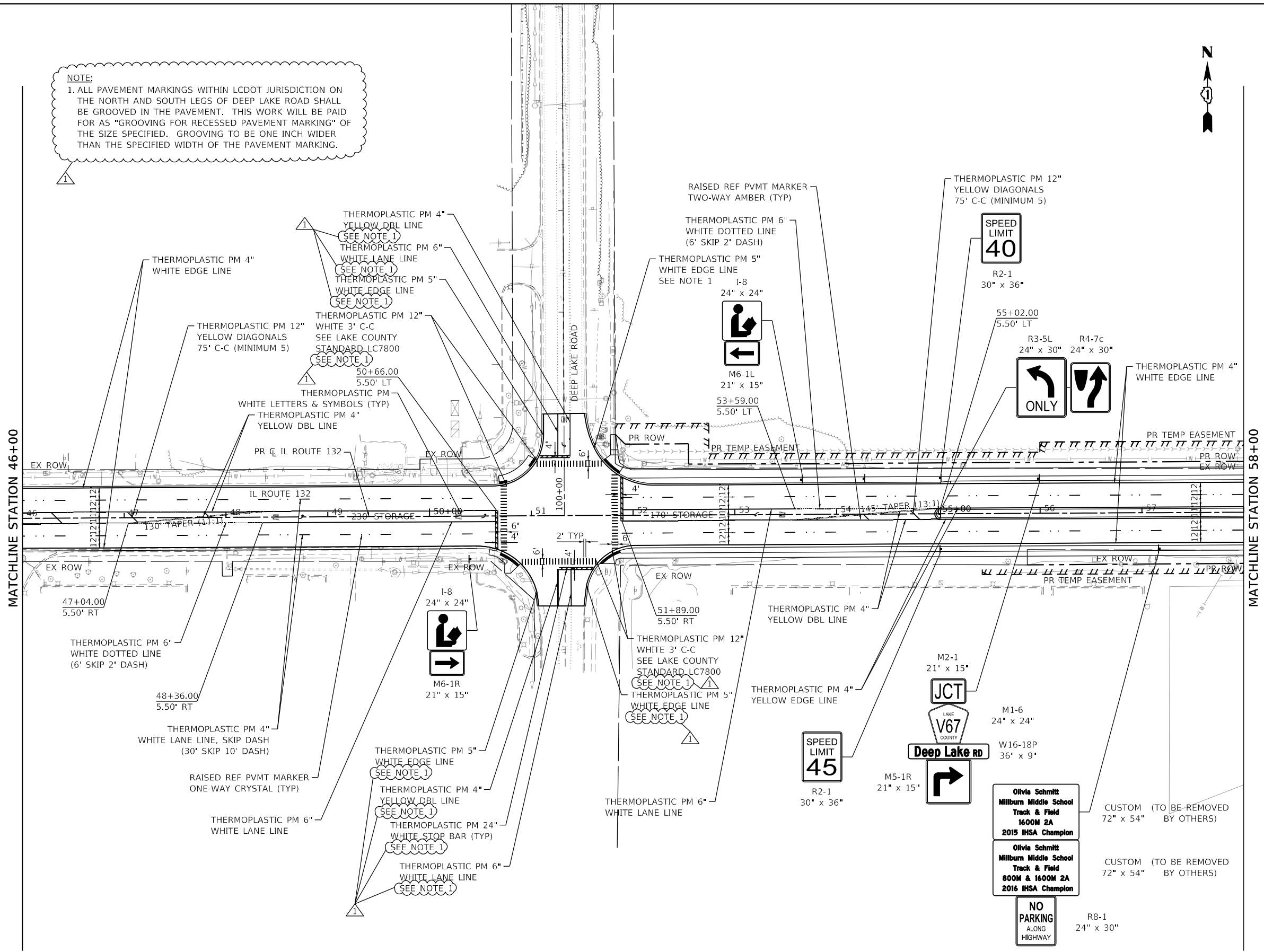
**STATE OF ILLINOIS
DEPARTMENT OF TRANSPORTATION**

**STAGE 1 CONSTRUCTION TRAFFIC CONTROL PLAN
IL ROUTE 132 - GRAND AVENUE**

SCALE: 1" = 50' SHEET 1 OF 9 SHEETS STA. 35+00.00 TO STA. 58+00.00

F.A.P. RTE.	SECTION	COUNTY	TOTAL SHEETS	SHEET NO.
541	A-WGRS-2	LAKE	205	46
CONTRACT NO. 62DB6				
ILLINOIS FED. AID PROJECT				

NOTE:
 1. ALL PAVEMENT MARKINGS WITHIN LCDOT JURISDICTION ON THE NORTH AND SOUTH LEGS OF DEEP LAKE ROAD SHALL BE GROOVED IN THE PAVEMENT. THIS WORK WILL BE PAID FOR AS "GROOVING FOR RECESSED PAVEMENT MARKING" OF THE SIZE SPECIFIED. GROOVING TO BE ONE INCH WIDER THAN THE SPECIFIED WIDTH OF THE PAVEMENT MARKING.



MATCHLINE STATION 46+00

MATCHLINE STATION 58+00



MODEL: Default
 FILE: \\patric\c\p\pub\ben\ben\comp\patric\cc-20k-07\Documents\10017177.03\0112_Derfm12_3_CADD\SHETS\62086-SHT-PMK-RN-02.dgn



USER NAME = nschilling	DESIGNED - JAC	REVISED - 07/19/2021
PLOT SCALE = 100,0000' / in.	CHECKED - NJS	REVISED -
PLOT DATE = 7/13/2021	DATE - 3/30/21	REVISED -

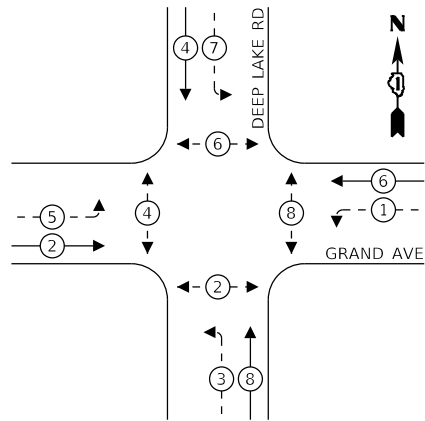
**STATE OF ILLINOIS
 DEPARTMENT OF TRANSPORTATION**

**GRAND AVENUE (ILLINOIS ROUTE 132)
 PAVEMENT MARKING AND SIGNING PLAN**

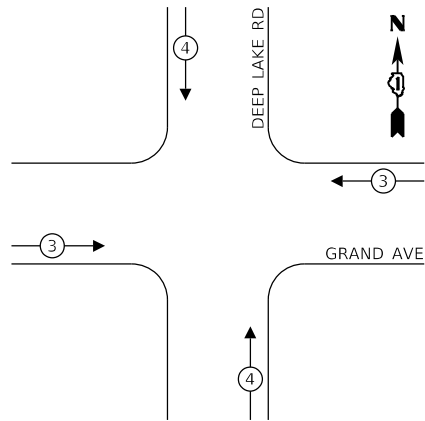
SCALE: 1" = 50' SHEET 3 OF 6 SHEETS STA. 46+00 TO STA. 46+00

REVISED SHEET 7/16/2021			
F.A.P. RTE. 541	SECTION A-WGRS-2	COUNTY LAKE	TOTAL SHEETS 205
			SHEET NO. 98
			CONTRACT NO. 62DB6
ILLINOIS FED. AID PROJECT			

PROPOSED CONTROLLER SEQUENCE

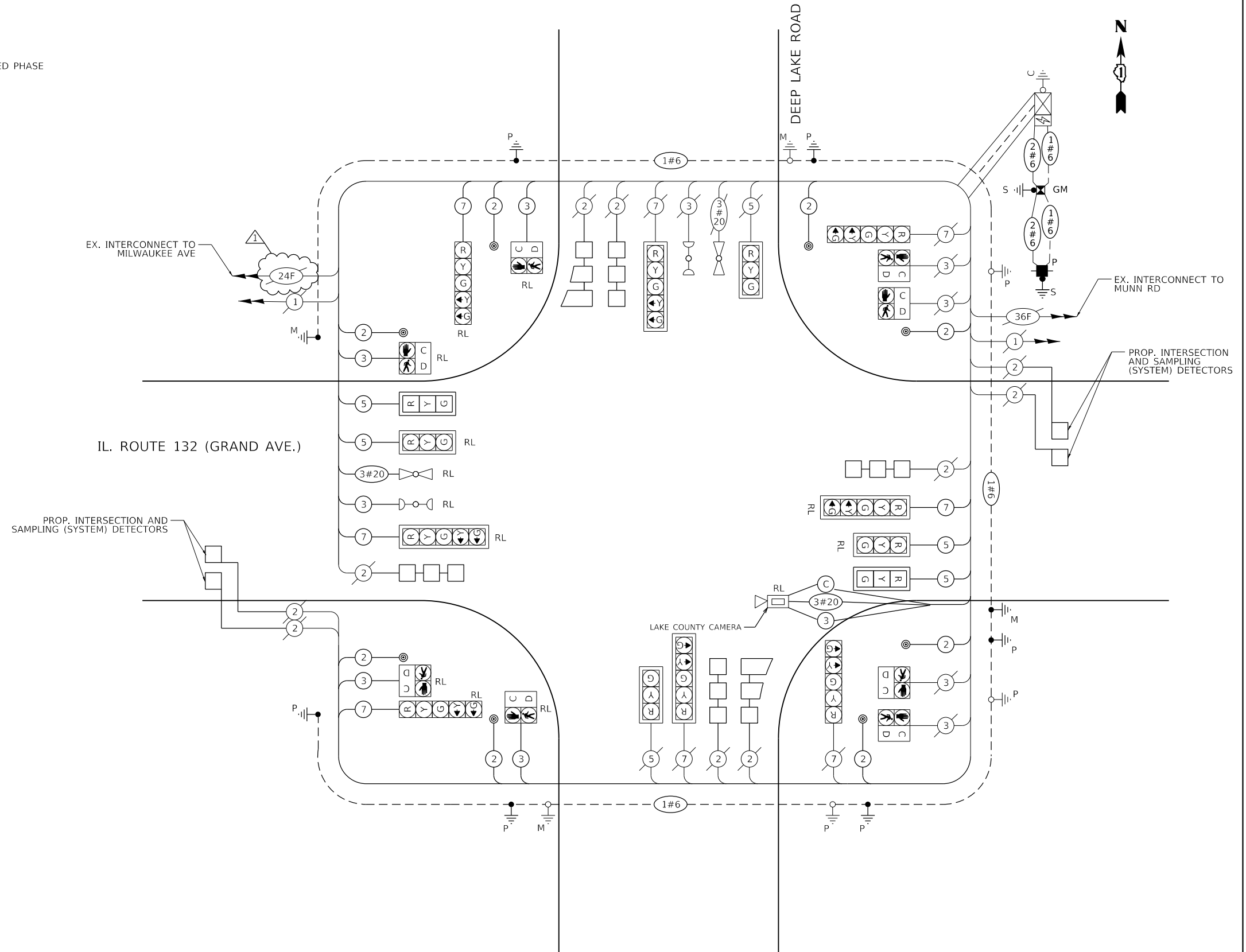


PROPOSED EMERGENCY VEHICLE PREEMPTION SEQUENCE



LEGEND:

- ⊙* PROTECTED PHASE
- ⊙*-- PROTECTED/PERMITTED PHASE
- ⊙*→ PEDESTRIAN PHASE
- ⊙ OL OVERLAP



CABLE PLAN
(NOT TO SCALE)

TRAFFIC SIGNAL ELECTRICAL SERVICE REQUIREMENTS

TYPE	NO. OF LAMPS	LED WATTAGE	% OPERATION	TOTAL WATTAGE
SIGNAL (RED)	14	11	50	77.00
(YELLOW)	14	20	5	14.00
(GREEN)	14	12	45	75.60
PERMISSIVE ARROW	16	10	10	16.00
PED. SIGNAL	8	20	100	160.00
CONTROLLER	1	100	100	100.00
UPS	1	25	100	25.00
VIDEO SYSTEM		150	100	
BLANK-OUT SIGN		25	5	
FLASHER		-	50	
STREET NAME SIGN		120	50	
LUMINAIRE		-	-	
TOTAL =				467.60

ENERGY COSTS TO:
ILLINOIS DEPARTMENT OF TRANSPORTATION
DIVISION OF HIGHWAYS/DISTRICT 1
201 W CENTER COURT
SCHAUMBURG, IL 60196

ENERGY SUPPLY: CONTACT: _____
PHONE: _____
COMPANY: COMMONWEALTH EDISON
ACCOUNT NUMBER: _____

DESIGNED - BRIDGET DONAHUE	REVISED - 07/19/2021
DRAWN - BRIDGET DONAHUE	REVISED -
CHECKED - SRIJAN ADHIKARI	REVISED -
DATE - 6/30/2020	REVISED -

STATE OF ILLINOIS
DEPARTMENT OF TRANSPORTATION

CABLE PLAN AND PHASE DESIGNATION DIAGRAM
ILLINOIS ROUTE 132 (GRAND AVE) AND DEEP LAKE ROAD

SCALE: SHEET 14 OF 22 STA. TO STA.

REVISE SHEET 7/16/2021

TS 7080
EAGLE 7F

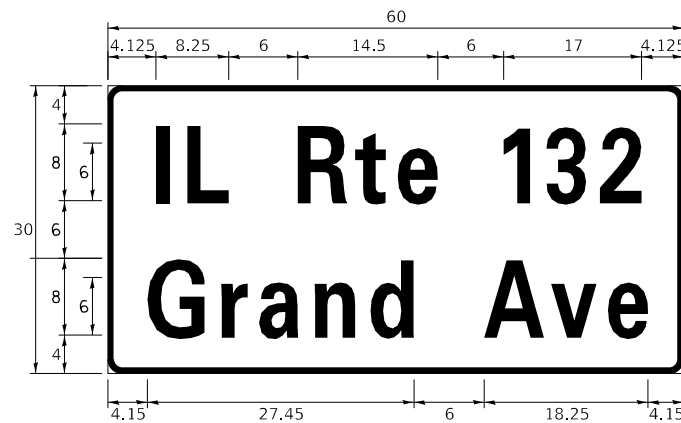
F.A.P. RTE.	SECTION	COUNTY	TOTAL SHEETS	SHEET NO.
541	A-W&RS-2	LAKE	205	117
CONTRACT NO. 62DB6				

ILLINOIS FED. AID PROJECT

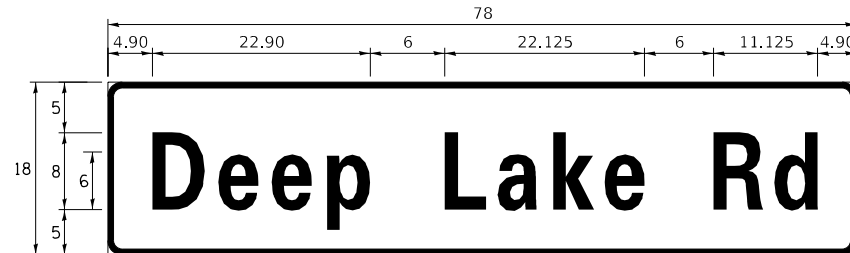
MODEL: Default FILE: \\nas0101\proj\p0101013\cadd\sheet\ts7080\ts7080-117.dwg

SIGN PANEL – TYPE 1 OR TYPE 2

ALL DIMENSIONS ARE IN INCHES UNLESS NOTED OTHERWISE



DESIGN SERIES	AREA (SQ FT)	SIGN PANEL TYPE	SHEETING TYPE	QTY. REQUIRED
D	12.5	2	ZZ	2



DESIGN SERIES	AREA (SQ FT)	SIGN PANEL TYPE	SHEETING TYPE	QTY. REQUIRED
D	9.75	2	ZZ	2

NOTE: FOR ADDITIONAL DESIGN AND INSTALLATION INFORMATION PLEASE SEE DISTRICT ONE MAST ARM MOUNTED STREET NAME SIGNS DETAIL.

SCHEDULE OF QUANTITIES

ITEM DESCRIPTION	UNITS	TOTAL QTY.
SIGN PANEL - TYPE 2	SQ FT	44.5
UNDERGROUND CONDUIT, GALVANIZED STEEL, 2" DIA.	FOOT	82
UNDERGROUND CONDUIT, GALVANIZED STEEL, 3" DIA.	FOOT	101
ELECTRIC CABLE IN CONDUIT, SIGNAL NO. 14 2C	FOOT	1320
ELECTRIC CABLE IN CONDUIT, SIGNAL NO. 14 3C	FOOT	1081
ELECTRIC CABLE IN CONDUIT, SIGNAL NO. 14 5C	FOOT	768
ELECTRIC CABLE IN CONDUIT, SIGNAL NO. 14 7C	FOOT	704
ELECTRIC CABLE IN CONDUIT, SERVICE, NO. 6 2C	FOOT	80
ELECTRIC CABLE IN CONDUIT, EQUIPMENT GROUNDING CONDUCTOR, NO. 6 1C	FOOT	791
TRAFFIC SIGNAL POST, GALVANIZED STEEL 16 FT.	EACH	2
STEEL MAST ARM ASSEMBLY AND POLE, 34 FT.	EACH	1
STEEL MAST ARM ASSEMBLY AND POLE, 40 FT.	EACH	1
CONCRETE FOUNDATION, TYPE A	FOOT	12
CONCRETE FOUNDATION, TYPE E 30-INCH DIAMETER	FOOT	13.5
CONCRETE FOUNDATION, TYPE E 36-INCH DIAMETER	FOOT	13
DRILL EXISTING HANDHOLE	EACH	9
SIGNAL HEAD, LED, 1-FACE, 3-SECTION, MAST-ARM MOUNTED	EACH	2
TRAFFIC SIGNAL BACKPLATE, LOUVERED, FORMED PLASTIC	EACH	2
DETECTOR LOOP REPLACEMENT	FOOT	795
PEDESTRIAN PUSH-BUTTON	EACH	8
TEMPORARY TRAFFIC SIGNAL INSTALLATION	EACH	1
RELOCATE EXISTING SIGNAL HEAD	EACH	6
RELOCATE EXISTING PEDESTRIAN SIGNAL HEAD	EACH	4
RELOCATE EXISTING TRAFFIC SIGNAL POST	EACH	2
* RELOCATE EXISTING EMERGENCY VEHICLE PRIORITY SYSTEM, DETECTOR UNIT	EACH	1
* RELOCATE EXISTING EMERGENCY VEHICLE PRIORITY SYSTEM, PHASING UNIT	EACH	1
REMOVE ELECTRIC CABLE FROM CONDUIT	FOOT	541
REMOVE EXISTING TRAFFIC SIGNAL EQUIPMENT	EACH	1
REMOVE EXISTING CONCRETE FOUNDATION	EACH	5
△ SERVICE INSTALLATION, GROUND MOUNTED, METERED	EACH	1
△ TERMINATE FIBER IN CABINET (LCDOT)	EACH	2
* EMERGENCY VEHICLE PRIORITY SYSTEM LINE SENSOR CABLE, NO. 20 3/C	FOOT	187
ROD AND CLEAN EXISTING CONDUIT	FOOT	541
△ RELOCATE EXISTING REMOTE-CONTROLLED VIDEO SYSTEM (SPECIAL) (LCDOT)	EACH	1
△ RELOCATE EXISTING SWITCH (SPECIAL) (LCDOT)	EACH	2
△ RELOCATE EXISTING VIDEO ENCODER, SPECIAL (LCDOT)	EACH	2
PEDESTRIAN SIGNAL POST, 5 FT.	EACH	3
PEDESTRIAN SIGNAL POST, 10 FT.	EACH	1
INTERCEPT EXISTING CONDUIT	EACH	1
CONCRETE FOUNDATION, TYPE A 12-INCH DIAMETER	FOOT	16
TEMPORARY TRAFFIC SIGNAL TIMING	EACH	1

* 100% OF THE COST TO THE VILLAGE OF LAKE VILLA

MODEL: Default
FILE: \\nas01c:\pub\arfc\comp\hantley\comp\arfc\cc-20\07\Documents\0017177\03\012_Design\12_3_CADD\SHEETS\62086-51-IT-SIGNAL_IL_132_&_Deep_Lake_Rd-3.dgn



USER NAME= nschilling	DESIGNED - BRIDGET DONAHUE	REVISED - △ 07/19/2021
PLOT SCALE= 40.0000 ' / in.	DRAWN - BRIDGET DONAHUE	REVISED -
PLOT DATE = 7/13/2021	CHECKED - SRIJAN ADHIKARI	REVISED -
	DATE - 6/30/2020	REVISED -

STATE OF ILLINOIS
DEPARTMENT OF TRANSPORTATION

MAST ARM MOUNTED STREET NAME SIGNS
AND SCHEDULE OF QUANTITIES
ILLINOIS ROUTE 132 (GRAND AVE) AND DEEP LAKE ROAD

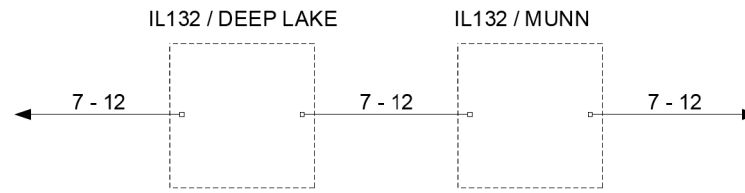
SCALE: SHEET 15 OF 22 STA. TO STA.

△ REVISED SHEET 7/16/2021

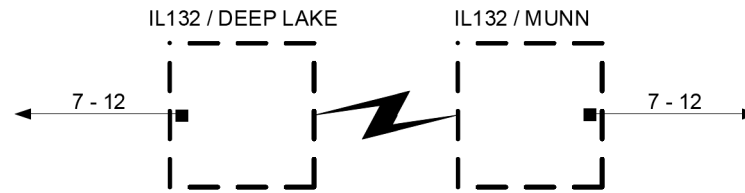
F.A.P. RTE.	SECTION	COUNTY	TOTAL SHEETS	SHEET NO.
541	A-W&RS-2	LAKE	205	118
CONTRACT NO. 62D86				
ILLINOIS FED. AID PROJECT				

TS 7080
EAGLE 7F

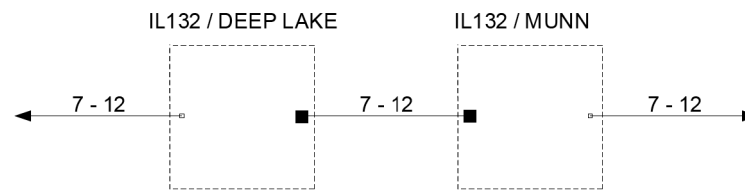
- ○ — EXISTING CONNECTOR / EXISTING FIBER
- ■ — NEW CONNECTOR / EXISTING FIBER
- — EXISTING FUSION SPLICE / EXISTING FIBER
- ● — NEW FUSION SPLICE / EXISTING FIBER
- ■ — NEW CONNECTOR / NEW FIBER
- ● — NEW FUSION SPLICE / NEW FIBER



EXISTING



TEMP



FINAL

LAKE COUNTY
DIVISION OF TRANSPORTATION

STATE OF ILLINOIS
DEPARTMENT OF TRANSPORTATION

ILLINOIS 132 - DEEP LAKE ROAD - MUNN ROAD
FIBER SPLICING DIAGRAM

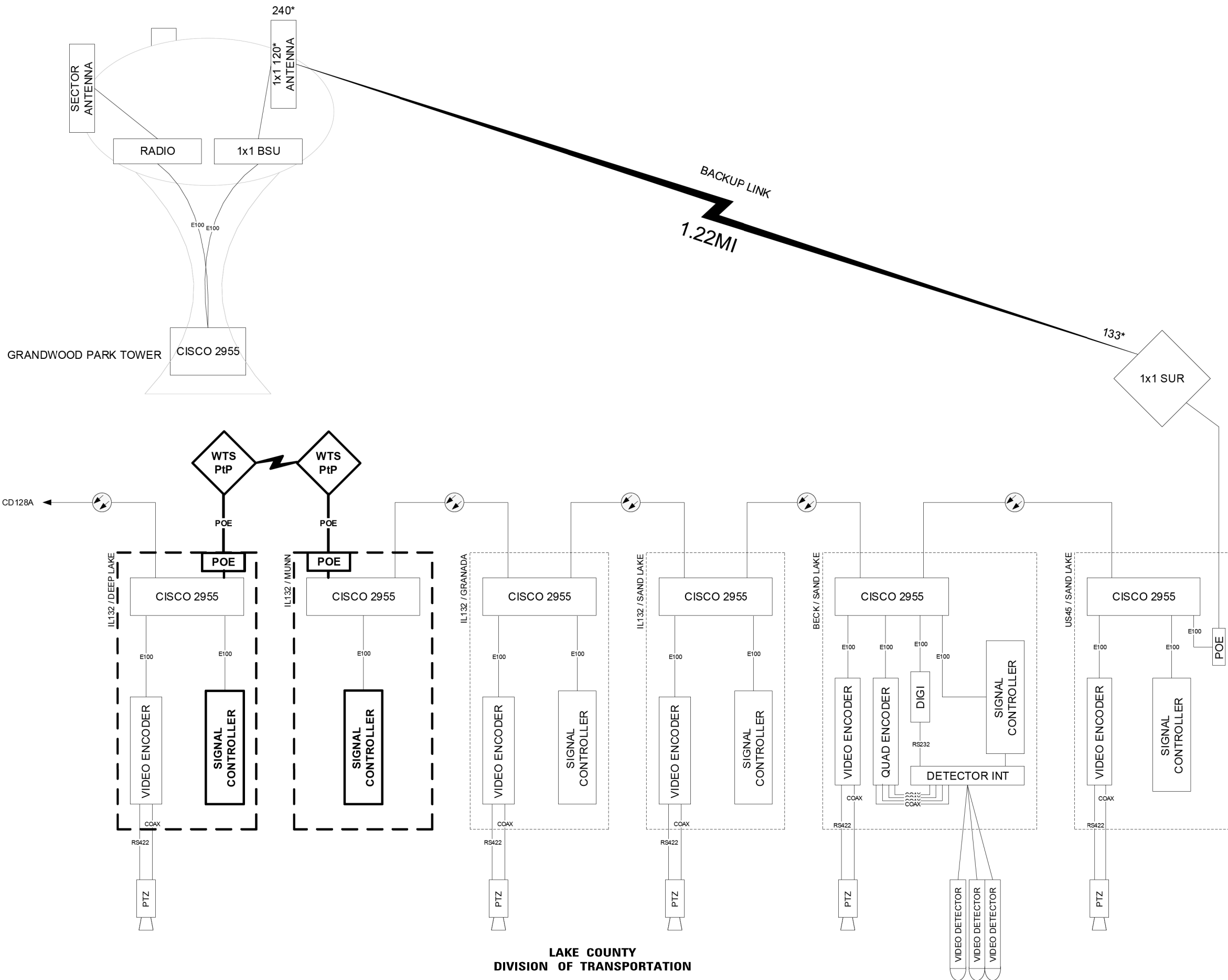
ENTIRE SHEET ADDED

USER NAME = nschiiling	DESIGNED -	REVISED -	△ 07/19/2021
	DRAWN -	REVISED -	
PLOT SCALE = 100,0000' / in.	CHECKED -	REVISED -	
PLOT DATE = 7/13/2021	DATE - 3/30/21	REVISED -	

SCALE: SHEET OF SHEETS STA. TO STA.

F.A.P. RTE.	SECTION	COUNTY	TOTAL SHEETS	SHEET NO.
541	A-WGRS-2	LAKE	205	125A
CONTRACT NO. 62DB6				
ILLINOIS FED. AID PROJECT				

MODEL: Default
 FILE: \\nasrfd\c:\pub\jantley\comp\safrfccc\pw\07\Documents\1001177\030113_DeepLn12_3_CADD\SHEETS\62DB6-SHIF-SIGNAL-LCDDT-2021-01.dgn



**LAKE COUNTY
DIVISION OF TRANSPORTATION**

**STATE OF ILLINOIS
DEPARTMENT OF TRANSPORTATION**

**128 B TEMP
ILLINOIS 83 - ILLINOIS 132**

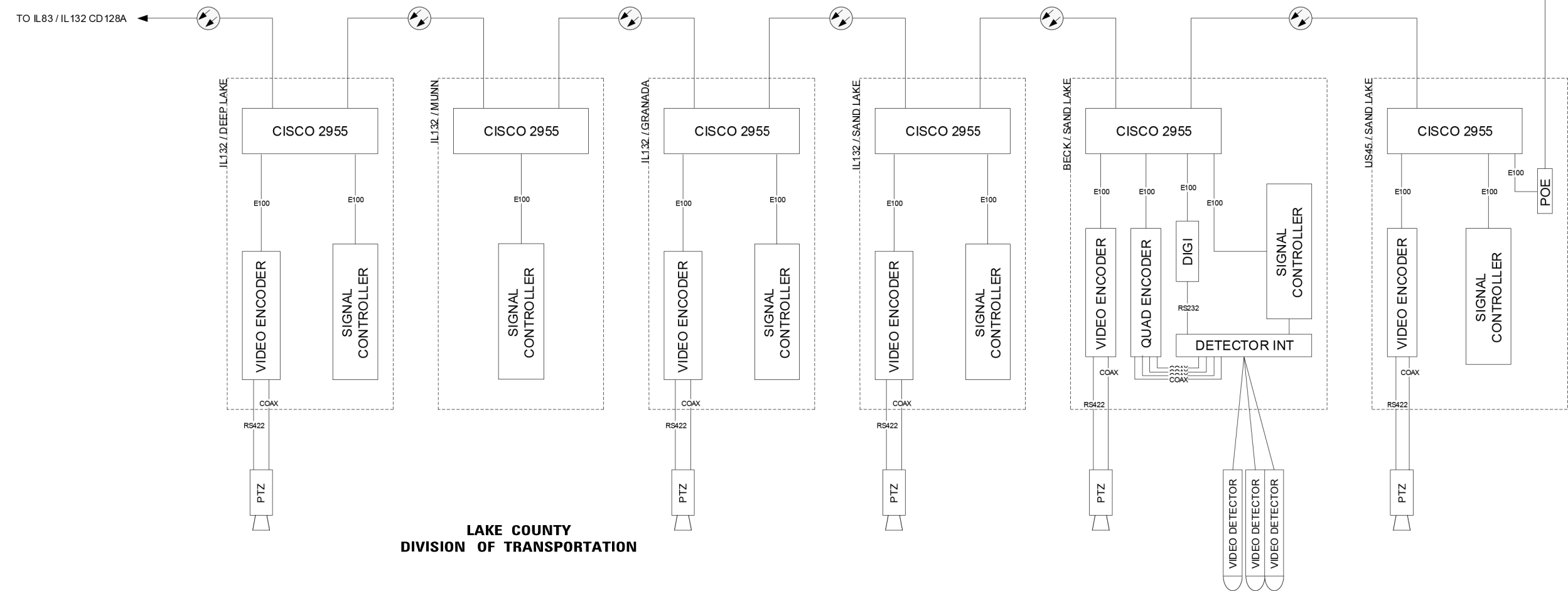
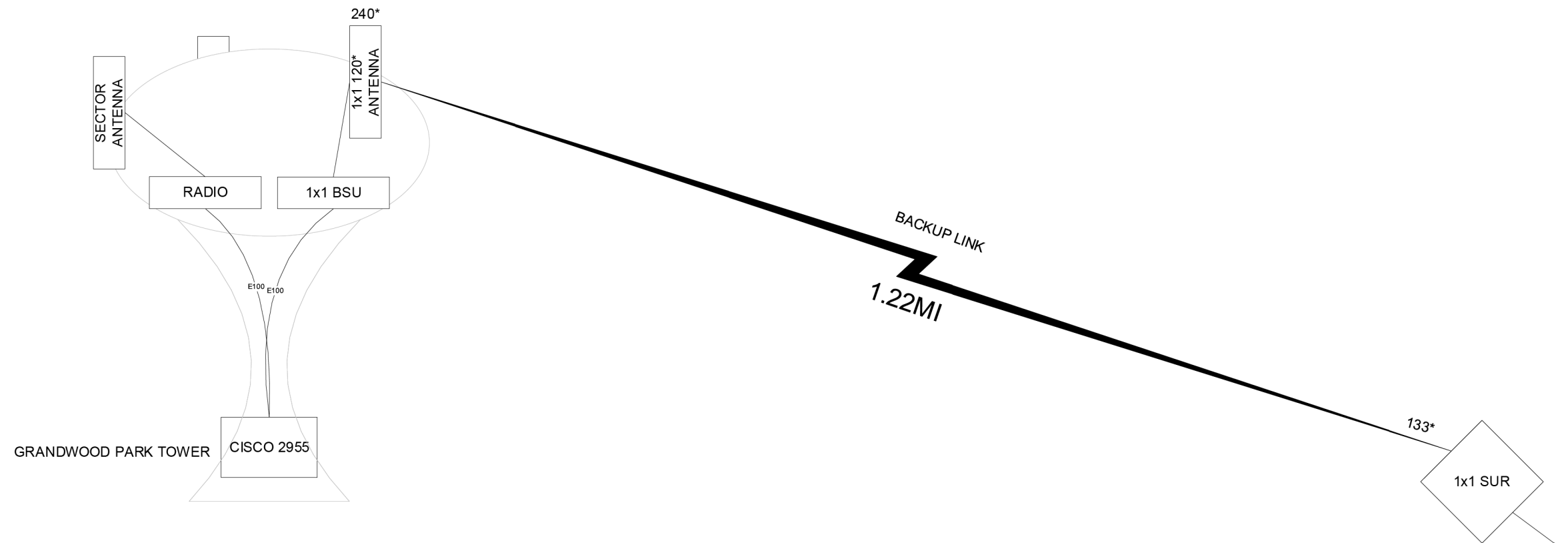
1 ENTIRE SHEET ADDED

USER NAME = nschilling	DESIGNED -	REVISED - 1 07/19/2021
PLOT SCALE = 100,0000' / in.	DRAWN -	REVISED -
PLOT DATE = 7/13/2021	CHECKED -	REVISED -
	DATE - 3/30/21	REVISED -

SCALE:	SHEET	OF	SHEETS	STA.	TO	STA.
--------	-------	----	--------	------	----	------

F.A.P. RTE.	SECTION	COUNTY	TOTAL SHEETS	SHEET NO.
541	A-W&RS-2	LAKE	205	125B
CONTRACT NO. 62D86				
ILLINOIS FED. AID PROJECT				

MODEL: Default
 FILE: \\nas01\cadd\proj\62d86\123\177\030112_Draft\12_3_CADD\SHEETS\62D86-SIT-SIGNAL-LCDDT-2021-02.dgn



**LAKE COUNTY
DIVISION OF TRANSPORTATION**

MODEL: Default
 FILE: \\na1c:\pub\asaf\csp\sub\entel\com\sa\rfcc\cc\pw\07\Documents\10013177\030113_Draft\112_3_CADD\SHETS\62D86-SHET-SIGNAL-LCDDT-2021-03.dgn

USER NAME = nschilling	DESIGNED -	REVISED -	07/19/2021
PLOT SCALE = 100,0000' / in.	DRAWN -	REVISED -	
PLOT DATE = 7/13/2021	CHECKED -	REVISED -	
	DATE - 3/30/21	REVISED -	

**STATE OF ILLINOIS
DEPARTMENT OF TRANSPORTATION**

128 B FINAL			
ILLINOIS 83 - ILLINOIS 132			
SCALE:	SHEET	OF SHEETS	STA. TO STA.

F.A.P. RTE.	SECTION	COUNTY	TOTAL SHEETS	SHEET NO.
541	A-W&RS-2	LAKE	205	125C
CONTRACT NO. 62D86				
ILLINOIS FED. AID PROJECT				

ENTIRE SHEET ADDED