

07-30-2021 LETTING ITEM 020

STATE OF ILLINOIS  
DEPARTMENT OF TRANSPORTATION

F.A.P. RTE.	SECTION	COUNTY	TOTAL SHEETS	SHEET NO.
309	(110V-BR)BDR	WHITESIDE	45	1
		ILLINOIS	CONTRACT NO. 64P53	

**INDEX OF SHEETS**

- 1 COVER SHEET
- 2 GENERAL NOTES
- 3-5 SUMMARY OF QUANTITIES
- 6 SCHEDULE OF QUANTITIES
- 7 ALIGNMENT LAYOUT PLAN
- 8 REMOVAL PLANS
- 9 IMPROVEMENT PLANS
- 10-11 MAINTENANCE OF TRAFFIC PLANS
- 12-37 STRUCTURAL PLANS
- 38 GENERAL DETAILS
- DISTRICT 2 DETAILS
- 39-42 WORK ZONE SIGN DETAILS (34.1)
- 43-45 TYPICAL PAVEMENT MARKINGS (41.1)

**HIGHWAY STANDARDS**

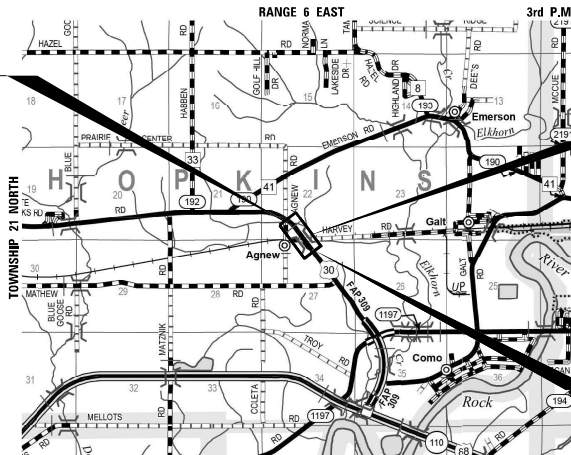
- 000001-08 STANDARD SYMBOLS, ABBREVIATIONS AND PATTERS
- 001001-02 AREAS OF REINFORCEMENT BARS
- 001006 DECIMAL OF AN INCH AND OF A FOOT
- 701001-02 OFF-ROAD OPERATIONS, 2L, 2W, MORE THAN 15' AWAY
- 701006-05 OFF-ROAD OPERATIONS, 2L, 2W, 15' TO 24" FROM PAVEMENT EDGE
- 701201-05 LANE CLOSURE, 2L, 2W, DAY ONLY, FOR SPEEDS >= 45 MPH
- 701311-03 LANE CLOSURE, 2L, 2W, MOVING OPERATIONS - DAY ONLY
- 701321-18 LANE CLOSURE, 2L, 2W, BRIDGE REPAIR WITH BARRIER
- 701901-08 TRAFFIC CONTROL DEVICES
- 704001-08 TEMPORARY CONCRETE BARRIER
- 720011-01 METAL POSTS FOR SIGNS, MARKERS AND DELINEATORS
- 728001-01 TELESCOPING STEEL SIGN SUPPORT
- 729001-01 APPLICATIONS OF TYPES A AND B METAL POSTS (FOR SIGNS & MARKERS)
- 780001-05 TYPICAL PAVEMENT MARKINGS
- 782006-01 GUARDRAIL AND BARRIER WALL REFLECTOR MOUNTING DETAILS

**PROPOSED  
HIGHWAY PLANS**

FAP ROUTE 309 (US 30)  
SECTION (110V-BR)BDR  
PROJECT NHPP-CMQ3(266)  
BRIDGE REPAIR OF STRUCTURE  
CARRYING US 30 OVER  
UNION PACIFIC RAILROAD  
WHITESIDE COUNTY

C-92-077-20

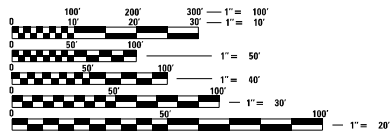
IMPROVEMENTS END  
STA 321 + 7.90  
SECTION ENDS  
STA 318 + 29.27



BRIDGE REPAIRS  
EXIST SN 098-0099

IMPROVEMENTS BEGIN  
STA 311 + 63.00  
SECTION BEGINS  
STA 314 + 79.70

GROSS LENGTH = 994.90 FT. = 0.188 MILE  
NET LENGTH = 349.56 FT. = 0.066 MILE



FULL SIZE PLANS HAVE BEEN PREPARED USING STANDARD ENGINEERING SCALES. REDUCED SIZED PLANS WILL NOT CONFORM TO STANDARD SCALES. IN MAKING MEASUREMENTS ON REDUCED PLANS, THE ABOVE SCALES MAY BE USED.

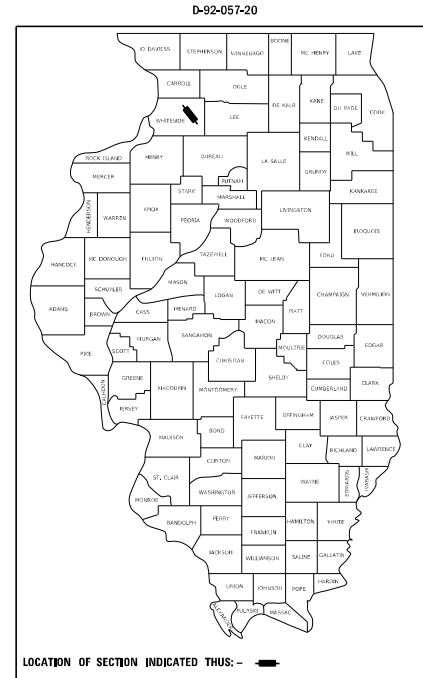
J.U.L.I.E.  
JOINT UTILITY LOCATION INFORMATION FOR EXCAVATORS  
1-800-892-0123  
OR 811

PROJECT ENGINEER PAUL J. FITZPATRICK, P.E.  
PROJECT MANAGER MAHMOUD ETEMADI, P.E.

CONTRACT NO. 64P53



APRIL 9 20 21  
PAUL J. FITZPATRICK  
ILLINOIS REG. PROFESSIONAL ENGINEER NO. 062-047687  
EXPIRATION DATE 11-30-2021  
SHEETS 1-11, 38-45



STATE OF ILLINOIS  
DEPARTMENT OF TRANSPORTATION  
SUBMITTED May 24, 20 21  
James Howard REGIONAL ENGINEER  
8une 25, 2021  
Joe E.A. Etk  
ENGINEER OF DESIGN AND ENVIRONMENT  
8une 25, 2021  
James J. Gu  
DIRECTOR OF HIGHWAYS PROJECT IMPLEMENTATION 13

PRINTED BY THE AUTHORITY  
OF THE STATE OF ILLINOIS

**GENERAL NOTES**

- TO HELP AVOID EXCESS DROP OFFS AT THE EDGE OF PAVEMENT, AGGREGATE SHOULDER MATERIAL OF THE TYPE SPECIFIED IN HE PLANS SHALL BE PLACED PRIOR TO ANY BITUMINOUS MATERIAL. THE AGGREGATE MATERIAL SHALL BE PLACED FLUSH WITH THE EXISTING PAVEMENT OR AT THE ELEVATION OF ANY PROPOSED MILLING. AT NO TIME SHALL THE EDGE OF THE AGGREGATE MATERIAL BE HIGHER THAN THE EXISTING EDGE OF PAVEMENT. THIS WORK SHALL BE PAID FOR BY THE TON FOR AGGREGATE SHOULDERS OF THE TYPE SPECIFIED.
- THE STRUCTURE WILL RETAIN THE SAME NUMBER, SN 098-0099.
- PAVEMENT MARKING SHALL BE DONE ACCORDING TO STANDARD 780001, EXCEPT AS FOLLOWS:
  - ALL WORDS, SUCH AS ONLY, SHALL BE 8 FEET HIGH.
  - ALL NON-FREEWAY ARROWS SHALL BE THE LARGE SIZE.
  - THE DISTANCE BETWEEN YELLOW NO-PASSING LINES SHALL BE 8 INCHES, NOT 7 INCHES, AS SHOWN IN THE DETAIL OF TYPICAL LANE AND EDGE LINES.
  - CENTERLINE SKIP DASH PAVEMENT MARKING ON MULTI-LANE DIVIDED, MULTI-LANE UNDIVIDED, AND ONE-WAY ROADWAY SHALL BE ACCORDING TO DISTRICT STANDARD 41.1.
- THE CONTRACTOR SHALL BE RESPONSIBLE FOR LOCATING AND PROTECTING UTILITY PROPERTY DURING CONSTRUCTION OPERATIONS AS OUTLINED IN ARTICLE 107.39 OF THE STANDARD SPECIFICATIONS. A MINIMUM OF 48 HOURS ADVANCE NOTICE IS REQUIRED FOR NON-EMERGENCY WORK. THE JULIE NUMBER IS 800-892-0123.
- IDOT IS NOT A MEMBER OF JULIE. IF YOU ARE NEAR ANY OVERHEAD LIGHTING, INTERSECTION LIGHTING OR TRAFFIC SIGNALS, CONTACT THE IDOT TRAFFIC OFFICE AT 815/284-5469 AT LEAST 48 HOURS PRIOR TO WORK.

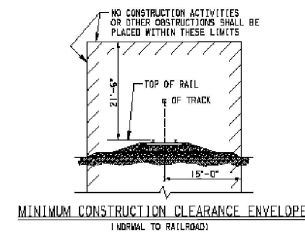
**GENERAL NOTES - MAINTENANCE OF TRAFFIC**

- MAINTENANCE OF TRAFFIC SHALL UTILIZE STANDARDS AS NOTED IN THE INDEX OF HIGHWAY STANDARDS ON THE COVER SHEET AND AS DETAILED IN THESE PLANS.
- ADVANCED WARNING SIGNS FOR NARROW WIDTHS SHALL BE PLACED AT ALL LEGS OF THE US 30 CONNECTOR INTERCHANGE, INCLUDING ON MOLINE ROAD. EASTBOUND SIGNS SHOULD BE PLACED PRIOR TO THE INTERSECTION OF IL 78 IN MORRISON (9 MILES AHEAD) AND ALSO PLACED PRIOR TO EMERSON ROAD (1 MILE AHEAD).  
  
ADVANCED WARINGS SIGNS FOR NARROW WIDTH SHALL BE SIGN W12-1103-4848 (WIDTH RESTRICTION SIGN) PER IDOT STANDARD 701901. MAX WIDTH SHALL BE 15'-6" WITH MILES AHEAD AS APPROPRIATE. THESE SIGNS WILL NOT BE MEASURED SEPARATELY FOR PAYMENT, BUT SHALL BE INCLUDED IN "TRAFFIC CONTROL AND PROTECTION, STANDARD 701321."
- TEMPORARY PAVEMENT MARKINGS SHALL BE TAPE, TYPE I EXCEPT ON FINAL SURFACES. ON FINAL WEARING SURFACES TEMPORARY PAVEMENT MARKINGS SHALL BE TAPE, TYPE III.
- EXISTING INLETS SHALL BE COVERED WITH A SUITABLE THICKNESS STEEL PLATE IN A MANNER APPROVED BY THE ENGINEER. THIS WORK SHALL NOT BE PAID FOR SEPARATELY, BUT SHALL BE INCLUDED IN THE COST OF THE ASSOCIATED TRAFFIC CONTROL ITEMS.
- PRE-STAGE WORK SHALL CONSIST OF CORE HOLE DRILLING AND FILLING WITH CONTROLLED LOW-STRENGTH MATERIAL. THIS WORK SHALL BE COMPLETED USING TRAFFIC CONTROL STANDARD 701201 AND STAGE 1 MAINTENANCE OF TRAFFIC CONTROL PLANS.

**GENERAL NOTES - RAILROAD MAINTENANCE NOTES**

- ALL PERMANENT CLEARANCES SHALL BE VERIFIED BEFORE PROJECT CLOSING.
- THE CONTRACTOR MUST SUBMIT A PROPOSED METHOD OF EROSION AND SEDIMENT CONTROL AND HAVE THE METHOD APPROVED BY THE RAILROAD.
- REGARDLESS OF UNDERLYING LAND OWNERSHIP, ALL SHORING SYSTEMS WITHIN RAILROAD RIGHT-OF-WAY OR THAT MAY IMPACT THE RAILROAD'S OPERATIONS AND/OR SUPPORTS OF THE RAILROAD'S EMBANKMENT SHALL BE DESIGNED AND CONSTRUCTED PER CURRENT RAILROAD GUIDELINES FOR TEMPORARY SHORING.
- THE CONTRACTOR SHALL SUBMIT AND PROVIDE SUFFICIENT SAFETY MEASURES TO PROTECT UNATTENDED EXCAVATIONS TO THE RAILROAD FOR APPROVAL.
- ALL DEMOLITIONS/REMOVALS WITHIN THE RAILROAD'S RIGHT-OF-WAY AND/OR THAT MAY IMPACT THE RAILROAD'S TRACKS OR OPERATIONS SHALL BE IN COMPLIANCE WITH THE CURRENT RAILROAD'S DEMOLITION GUIDELINES.
- RAILROAD REQUIREMENTS DO NOT ALLOW WORK WITHIN 50 FEET OF TRACK CENTERLINE WHEN A TRAIN PASSES THE WORK SITE AND ALL PERSONNEL MUST CLEAR THE AREA WITHIN 25 FEET OF THE TRACK CENTERLINE AND SECURE ALL EQUIPMENT.
- CALL BEFORE YOU DIG. PRIOR TO EXCAVATION, DISRUPTING, OR WORKING ON THE RAILROAD PROPERTY THE CONTRACTOR SHALL LOCATE AND PROTECT UPRR FACILITIES BY CALLING THE UPRR "CALL BEFORE YOU DIG" (CBYD) PHONE NUMBER: 1-800-336-9193
- CONSTRUCTION ACTIVITIES, INCLUDING FALSEWORK/FORMWORK, ARE NOT ALLOWED WITHIN THE "MINIMUM CONSTRUCTION CLEARANCE ENVELOPE" AS THEY WOULD OTHERWISE DISRUPT RAILROAD OPERATIONS.

NOTICE: ALL CONSTRUCTION SUBMITTALS SHALL BE REVIEWED AND APPROVED BY THE AGENCY PRIOR TO THE SUBMITTING TO THE RAILROAD FOR REVIEW AND APPROVAL. REVIEW TIMES FOR CONSTRUCTION SUBMITTALS ARE DETAILED IN TABLE 3-1 OF THE CURRENT UPRR GUIDELINES OF RAILROAD GRADE SEPARATION PROJECTS.



DESIGNER: NDP APPROVED: <i>Richard J. Miller</i> UPRR - SUBJECT TO APPROVAL BY UPRR OPERATIONS DIVISION DATE: 12/23/20	CHECKED: PJF DATE: 12/23/20	BRIDGE STANDARDS TEMPORARY CLEARANCE ENVELOPE UPRR - SUBJECT TO APPROVAL BY UPRR OPERATIONS DIVISION
---	--------------------------------	--

MODEL: 12/16/16  
 FILE: I:\MAIL\PROJECTS\11\_1523\_16\BRIDGE\BRIDGE\_1103V-RR\BRD\64P53.dwg  
 PLOT DATE: 5/19/2021



USER NAME = ndp	DESIGNED = NDP	REVISED =
DRAWN = NDP	REVISIONS =	
CHECKED = PJF	REVISIONS =	
DATE = 12/23/20	REVISIONS =	

**STATE OF ILLINOIS  
DEPARTMENT OF TRANSPORTATION**

**GENERAL NOTES  
US 30 OVER UNION PACIFIC RAILROAD**

SCALE:	SHEET 1 OF 3 SHEETS	STA. TO STA.	ILLINOIS FED. AID PROJECT
F.A.P. SITE: 309	SECTION: 1110V-BR1BRD	COUNTY: WHITESIDE	TOTAL SHEET NO.: 45 2
			CONTRACT NO. 64P53

CODE NO.	ITEM	UNIT	TOTAL QUANTITY	CONSTRUCTION CODE	
				80% FED	20% STATE
28000510	INLET FILTERS	EACH	2	2	
44000157	HOT-MIX ASPHALT SURFACE REMOVAL, 2"	SQ YD	293	293	
50102400	CONCRETE REMOVAL	CU YD	9.5	9.5	
50300255	CONCRETE SUPERSTRUCTURE	CU YD	9.7	9.7	
50300300	PROTECTIVE COAT	SQ YD	1,431	1,431	
50800205	REINFORCEMENT BARS, EPOXY COATED	POUND	1,350	1,350	
50800515	BAR SPLICERS	EACH	18	18	
52000110	PREFORMED JOINT STRIP SEAL	FOOT	104	104	
59300100	CONTROLLED LOW-STRENGTH MATERIAL	CU YD	66.5	66.5	
63300575	REMOVE AND REERECT RAIL ELEMENT OF EXISTING GUARDRAIL	FOOT	50	50	
* 67000400	ENGINEER'S FIELD OFFICE, TYPE A	CAL MO	6	6	
67100100	MOBILIZATION	L SUM	1	1	
70100405	TRAFFIC CONTROL AND PROTECTION, STANDARD 701321	EACH	1	1	
70100450	TRAFFIC CONTROL AND PROTECTION, STANDARD 701201	L SUM	1	1	
* 70106500	TEMPORARY BRIDGE TRAFFIC SIGNALS	EACH	1	1	

\* SPECIALTY ITEM

MODEL: D:\PLOT... FILE NAME: P:\18-089-11\_0339\_BRIDGE... 06/14/2021 10:50:00 AM



USER NAME	= ndp	DESIGNED	= NDP	REVISED	=
DRAWN	= NDP	CHECKED	= PJF	REVISED	=
DATE	= 12/23/20	PLOT DATE	= 5/19/2021		

FLIGHT	= 2.0000 / in.
--------	----------------

**STATE OF ILLINOIS  
DEPARTMENT OF TRANSPORTATION**

SUMMARY OF QUANTITIES			
US 30 OVER UNION PACIFIC RAILROAD			
SCALE:	SHEET 1	OF 1	SHEETS STA. TO STA.

F.A.P. SITE	SECTION	COUNTY	TOTAL SHEETS	SHEET NO.
309	(110V-BR)BDR	WHITESIDE	45	3
CONTRACT NO. 64P53				

CODE NO.	ITEM	UNIT	TOTAL QUANTITY	CONSTRUCTION CODE	
				80% FED 20% STATE	
70106700	TEMPORARY RUMBLE STRIPS	EACH	6	6	
70107025	CHANGEABLE MESSAGE SIGN	CAL DA	28	28	
70300220	TEMPORARY PAVEMENT MARKING - LINE 4"	FOOT	3,984	3,984	
70300280	TEMPORARY PAVEMENT MARKING - LINE 24"	FOOT	22	22	
70400100	TEMPORARY CONCRETE BARRIER	FOOT	648	648	
70400200	RELOCATE TEMPORARY CONCRETE BARRIER	FOOT	648	648	
70600250	IMPACT ATTENUATORS, TEMPORARY (NON- REDIRECTIVE), TEST LEVEL 3	EACH	2	2	
70600350	IMPACT ATTENUATORS, RELOCATE (NON- REDIRECTIVE), TEST LEVEL 3	EACH	2	2	
* 78001110	PAINT PAVEMENT MARKING - LINE 4"	FOOT	7,960	7,960	
* 78200011	BARRIER WALL REFLECTORS, TYPE C	EACH	88.02	88.02	
* X0322276	CLEANING AND PAINTING EXPOSED REBAR	L SUM	1	1	
X0325748	ACRYLIC COATING	SQ YD	360	360	
78300202	PAVEMENT MARKING REMOVAL - WATER BLASTING	SQ FT	1,327	1,327	
X5030250	BRIDGE DECK GROOVING (LONGITUDINAL)	SQ YD	935	935	
X6026200	INLETS TO BE ADJUSTED (SPECIAL)	EACH	2	2	

\* SPECIALTY ITEM

MODEL: D:\P\AutoCAD\2013\11\3033\_BRIDGE\_US30\_PACIFICRAILROAD\DWG\3033-48-000.dwg



USER NAME = ndp	DESIGNED - NDP	REVISED -
DRAWN - NDP	REVISOR -	
PLT SCALE = 2.0000 / in.	CHECKED - PJF	REVISED -
PLT DATE = 5/19/2021	DATE - 12/23/20	REVISED -

**STATE OF ILLINOIS  
DEPARTMENT OF TRANSPORTATION**

SUMMARY OF QUANTITIES			
US 30 OVER UNION PACIFIC RAILROAD			
SCALE:	SHEET 2	OF 3 SHEETS	STA. TO STA.

F.A.P. SITE	SECTION	COUNTY	TOTAL SHEETS	SHEET NO.
309	(110V-BR)BDR	WHITESIDE	45	4
CONTRACT NO. 64P53				



CODE NO.	ITEM	UNIT	TOTAL QUANTITY	CONSTRUCTION CODE	
				80% FED 20% STATE	
X7030005	TEMPORARY PAVEMENT MARKING REMOVAL	SQ FT	1,372		1,372
Z0006014	BRIDGE DECK LATEX CONCRETE OVERLAY, 2 1/2 INCHES	SQ YD	1,137		1,137
Z0006020	BRIDGE DECK LATEX CONCRETE OVERLAY, 3 1/2 INCHES	SQ YD	293		293
X5060601	CONTAINMENT AND DISPOSAL OF NON-LEAD PAINT CLEANING RESIDUES NO. 1	L SUM	1		1
Z0010501	CLEANING AND PAINTING STEEL BRIDGE NO. 1	L SUM	1		1
Z0012132	BRIDGE DECK SCARIFICATION 1"	SQ YD	293		293
Z0012140	BRIDGE DECK SCARIFICATION 2"	SQ YD	1,137		1,137
Z0012754	STRUCTURAL REPAIR OF CONCRETE (DEPTH EQUAL TO OR LESS THAN 5 INCHES)	SQ FT	40		40
Z0018500	DRAINAGE STRUCTURES TO BE CLEANED	EACH	2		2
Z0029090	DIAMOND GRINDING (BRIDGE SECTION)	SQ YD	1,306		1,306
Z0048665	RAILROAD PROTECTIVE LIABILITY INSURANCE	L SUM	1		1
X5110302	BITUMINOUS COATED AGGREGATE SLOPEWALL 6"	TON	79		79

\* SPECIALTY ITEM

**STATE OF ILLINOIS  
DEPARTMENT OF TRANSPORTATION**

**SUMMARY OF QUANTITIES  
US 30 OVER UNION PACIFIC RAILROAD**

F.A.P. STE.	SECTION	COUNTY	TOTAL SHEETS	SHEET NO.
309	(110V-BR)BDR	WHITESIDE	45	5
CONTRACT NO. 64P53				
ILLINOIS   FED. AID PROJECT				

SCALE: SHEET 3 OF 3 SHEETS STA. TO STA.

MODEL: D:\P041\11\_0333\_BDR18\11\_0333\_BDR18.mxd  
 FILE NAME: 11\_0333\_BDR18.mxd  
 USER: ndp  
 DATE: 12/23/20  
 PLOT DATE: 5/19/2021



USER NAME = ndp	DESIGNED = NDP	REVISIONS =
	DRAWN = NDP	REVISIONS =
PLOT SCALE = 2.0000 / in.	CHECKED = PJF	REVISIONS =
PLOT DATE = 5/19/2021	DATE = 12/23/20	REVISIONS =

REV. 6/10/21

## MAINTENANCE OF TRAFFIC SCHEDULE

LOCATION	70300220	70300280	70400100	70400200	70600250	70600350	78200011	X7030005
	TEMPORARY PAVEMENT MARKING - LINE 4"	TEMPORARY PAVEMENT MARKING - LINE 24"	TEMPORARY CONCRETE BARRIER	RELOCATE TEMPORARY CONCRETE BARRIER	IMPACT ATTENUATORS, TEMPORARY (NON-REDIRECTIVE), TEST LEVEL 3	IMPACT ATTENUATORS, RELOCATE (NON-REDIRECTIVE), TEST LEVEL 3	BARRIER WALL REFLECTORS, TYPE C	TEMPORARY PAVEMENT MARKING REMOVAL
	(FOOT)	(FOOT)	(FOOT)	(FOOT)	(EACH)	(EACH)	(EACH)	(SQ FT)
<b>MAINLINE - STAGE 1</b>								
STATION to STATION								
311+00 to 312+00	74.0	11.0						24.7
312+00 to 313+00	200.3							66.8
313+00 to 314+00	200.5		69.2		1.0		2	66.8
314+00 to 315+00	200.0		100.1				8	66.7
315+00 to 316+00	200.0		100.0				8	66.7
316+00 to 317+00	200.0		100.0				8	66.7
317+00 to 318+00	200.0		100.0				8	66.7
318+00 to 319+00	200.0		100.1				8	66.7
319+00 to 320+00	200.4		78.2		1.0		2	66.8
320+00 to 321+00	200.6							66.9
321+00 to 322+00	115.9	11.0						38.6
<b>MAINLINE - STAGE 2</b>								
STATION to STATION								
311+00 to 312+00	73.9							46.6
312+00 to 313+00	200.6							66.9
313+00 to 314+00	200.8			69.5	1.0		2	66.9
314+00 to 315+00	200.0		100.1				8	66.7
315+00 to 316+00	200.0		100.0				8	66.7
316+00 to 317+00	200.0		100.0				8	66.7
317+00 to 318+00	200.0		100.0				8	66.7
318+00 to 319+00	200.0		100.1				8	66.7
319+00 to 320+00	200.4		78.2		1.0		2	66.8
320+00 to 321+00	200.4							66.8
321+00 to 322+00	116.0							60.7
<b>TOTAL</b>	<b>3983.7</b>	<b>22.0</b>	<b>647.5</b>	<b>647.8</b>	<b>2.0</b>	<b>2.0</b>	<b>88.0</b>	<b>1371.9</b>
<b>ADJUSTED TOTAL</b>	<b>3984</b>	<b>22</b>	<b>648</b>	<b>648</b>	<b>2</b>	<b>2</b>	<b>88</b>	<b>1372</b>

## PAVEMENT MARKING SCHEDULE

LOCATION	78001110	X0327980
	PAINT PAVEMENT MARKING - LINE 4"	PAVEMENT MARKING REMOVAL - WATER BLASTING
	(FOOT)	(SQ FT)
<b>MAINLINE</b>		
STATION to STATION		
311+00 to 312+00	296.0	49.3
312+00 to 313+00	800.0	133.3
313+00 to 314+00	800.0	133.3
314+00 to 315+00	800.0	133.3
315+00 to 316+00	800.0	133.3
316+00 to 317+00	800.0	133.3
317+00 to 318+00	800.0	133.3
318+00 to 319+00	800.0	133.3
319+00 to 320+00	800.0	133.3
320+00 to 321+00	800.0	133.3
321+00 to 322+00	463.2	77.2
<b>TOTAL</b>	<b>7959.2</b>	<b>1326.5</b>
<b>ADJUSTED TOTAL</b>	<b>7960</b>	<b>1327</b>

NOTE: PAINT PAVEMENT MARKING - LINE 4" QUANTITY IS FOR TWO APPLICATIONS.

## DRAINAGE SCHEDULE

### 28000510 INLET FILTERS

EACH	LOCATION		NOTES
	STATION	OFFSET	
1	317+81.8	16.9' RT	
1	318+04.1	17.1' LT	
<b>2</b>	<b>TOTAL</b>		

### X6026200 INLETS TO BE ADJUSTED (SPECIAL)

EACH	LOCATION		NOTES
	STATION	OFFSET	
1	317+81.8	16.9' RT	SEE SPECIAL PROVISIONS
1	318+04.1	17.1' LT	SEE SPECIAL PROVISIONS
<b>2</b>	<b>TOTAL</b>		

### Z0018500 DRAINAGE STRUCTURES TO BE CLEANED

EACH	LOCATION		NOTES
	STATION	OFFSET	
1	317+81.8	16.9' RT	SEE SPECIAL PROVISIONS
1	318+04.1	17.1' LT	SEE SPECIAL PROVISIONS
<b>2</b>	<b>TOTAL</b>		

**STATE OF ILLINOIS  
DEPARTMENT OF TRANSPORTATION**

**SCHEDULE OF QUANTITIES  
US 30 OVER UNION PACIFIC RAILROAD**

F.A.P. SITE	SECTION	COUNTY	TOTAL SHEETS	SHEET NO.
309	I110V-BR1BRD	WHITESIDE	45	6
CONTRACT NO. 64P53				
ILLINOIS FED. AID PROJECT				

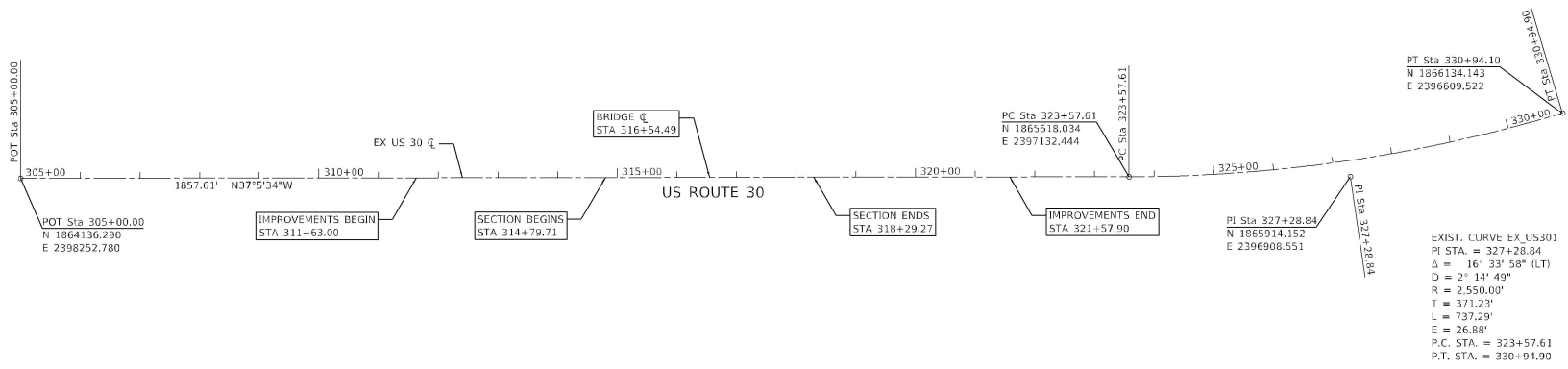
SCALE: SHEET 1 OF 3 SHEETS STA. TO STA.



USER NAME = ndp	DESIGNED = NDP	REVISED =
DRAWN = NDP	REVISED =	
CHECKED = PJF	REVISED =	
DATE = 12/23/20	REVISED =	

PLOT SCALE = 2.0000 / 1"=50'  
PLOT DATE = 5/19/2021

MODEL: TDR048  
FILE: MAINLINE\_P10-06R111\_V23R\_EBSP\_MAINT\_MOTD\_CAD-DWG-I110V-BR1BRD-309-06.dwg



MODEL: T:\Dwg\...  
 FILE: I:\MAIL: P:\D-1048\11\_1521\_EB309\_16\NS03\_101104\1104\1104\_301.dwg

Kaskaskia Engineering & Surveying, LLC  
 Professional Engineering Group

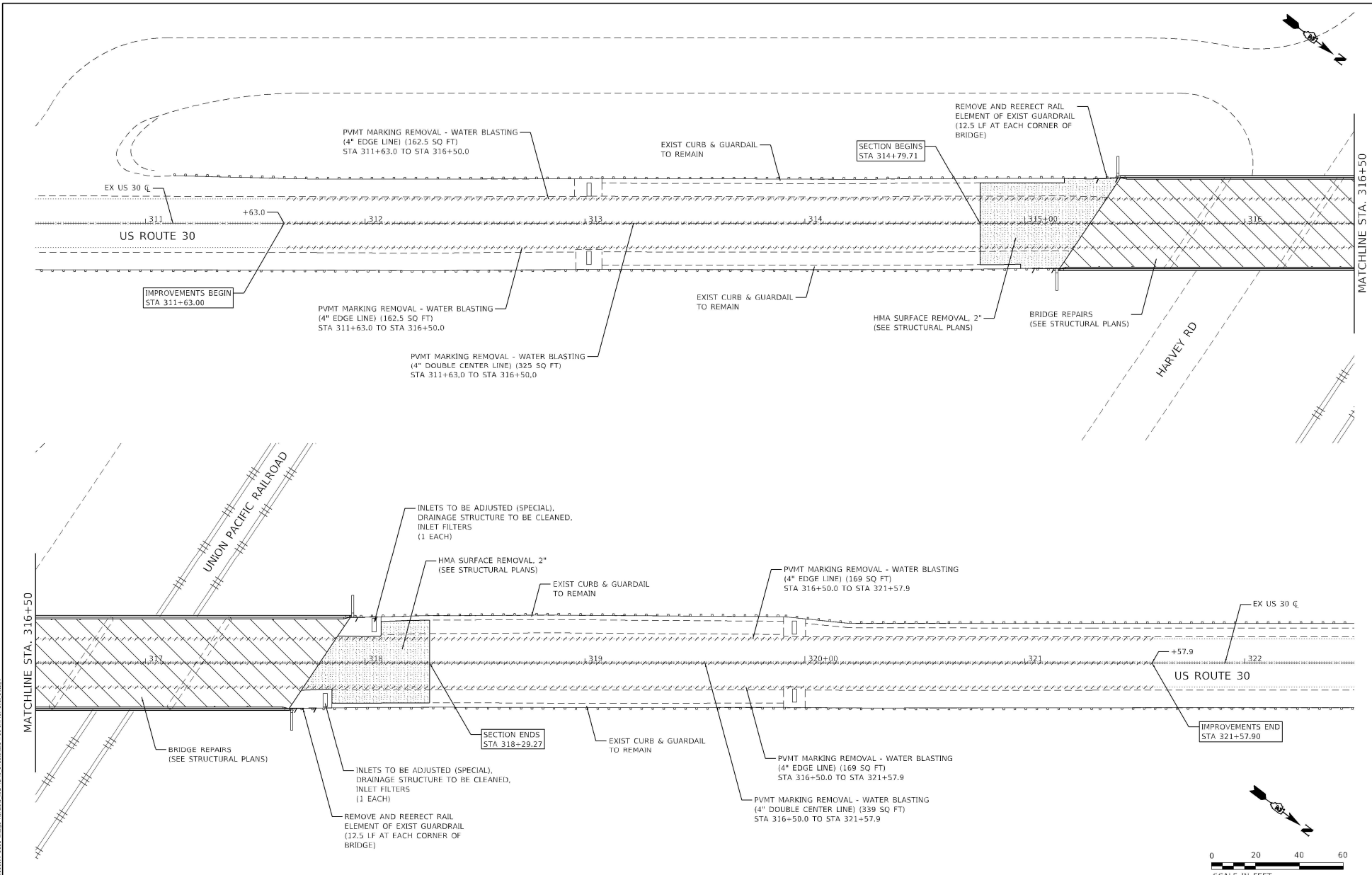
USER NAME = ndp	DESIGNED - NDP	REVISED -
DRAWN - NDP	REVISED -	
CHECKED - PJF	REVISED -	
DATE - 12/23/20	REVISED -	
PLOT SCALE = 200.0000" / 1"		
PLOT DATE = 5/19/2021		

**STATE OF ILLINOIS**  
**DEPARTMENT OF TRANSPORTATION**

**ALIGNMENT LAYOUT PLAN**  
**US 30 OVER UNION PACIFIC RAILROAD**

F.A.P. SITE	SECTION	COUNTY	TOTAL SHEETS	SHEET NO.
309	110V-BR18DR	WHITESIDE	45	7
CONTRACT NO. 64P53				
ILLINOIS FED. AID PROJECT				

SCALE: 1"=100'    SHEET    OF    SHEETS    STA.    TO STA.

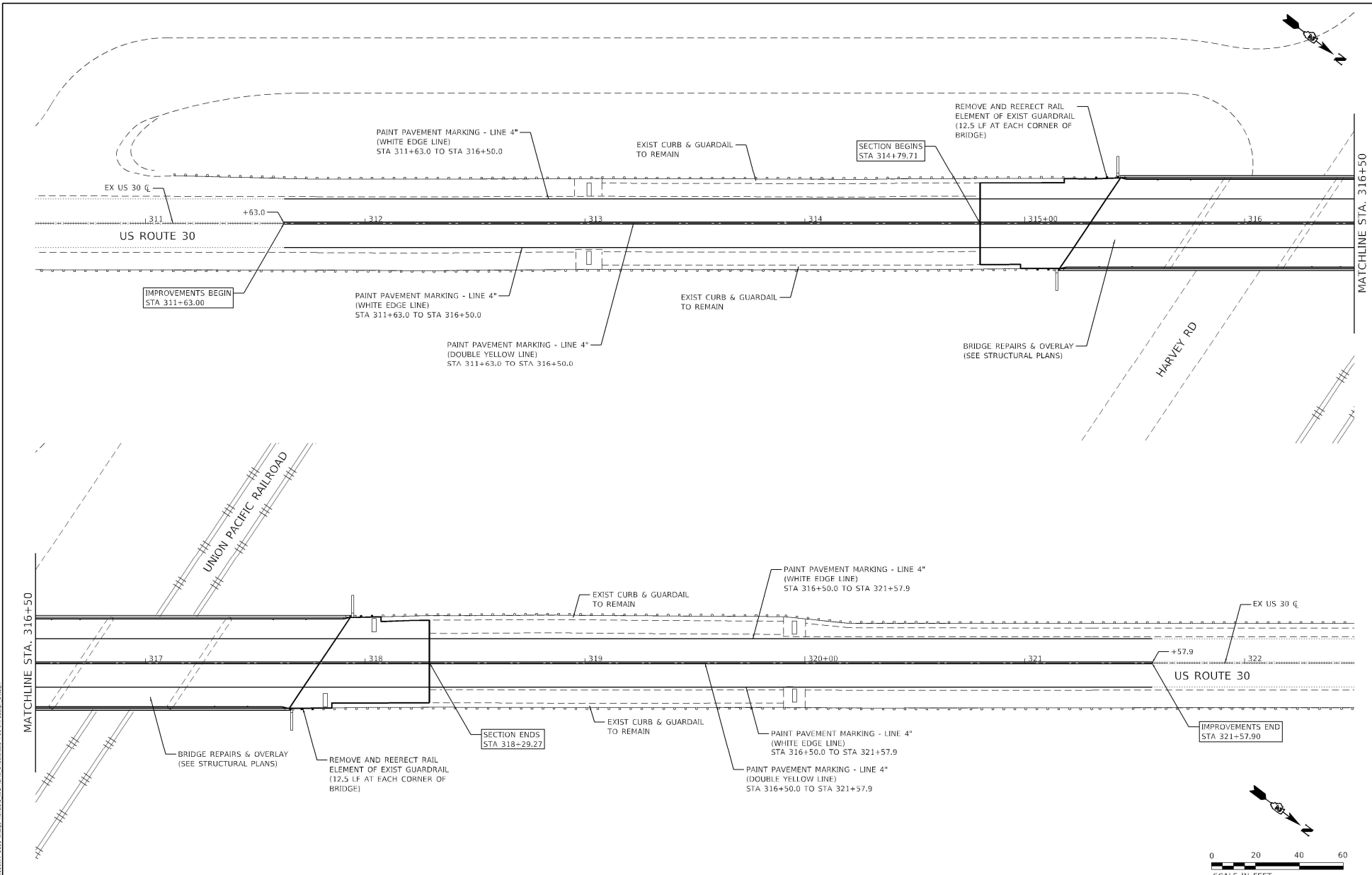


USER NAME	= ndp	DESIGNED	= NDP	REVISED	=
DRAWN	= NDP	CHECKED	= PJF	REVISED	=
DATE	= 12/23/20	REVISED	=		

**STATE OF ILLINOIS  
DEPARTMENT OF TRANSPORTATION**

<b>REMOVAL PLAN US 30 OVER UNION PACIFIC RAILROAD</b>			
F.A.P. SITE	SECTION	COUNTY	TOTAL SHEET NO.
309	(110V-BR)RDR	WHITESIDE	45 8
CONTRACT NO. 64P53			
ILLINOIS FED. AID PROJECT			

SCALE: 1"=20'	SHEET	OF	SHEETS	STA.	TO	STA.
---------------	-------	----	--------	------	----	------



MODEL: 12/16/2020  
 FILE: I:\MAIL:110V-BR1RDR\110V-BR1RDR\110V-BR1RDR\110V-BR1RDR.dwg  
 PLOT DATE: 5/19/2021



USER NAME	= ndp	DESIGNED	= NDP	REVISED	=
DRAWN	= NDP	REVISIONS	=	DATE	=
CHECKED	= PJF	REVISIONS	=	DATE	=
PLOT SCALE	= 40,0000' = 1" =	REVISIONS	=	DATE	=
PLOT DATE	= 5/19/2021	REVISIONS	=	DATE	=

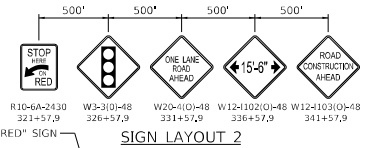
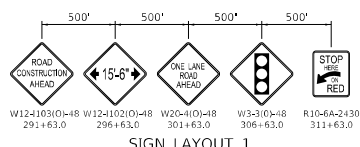
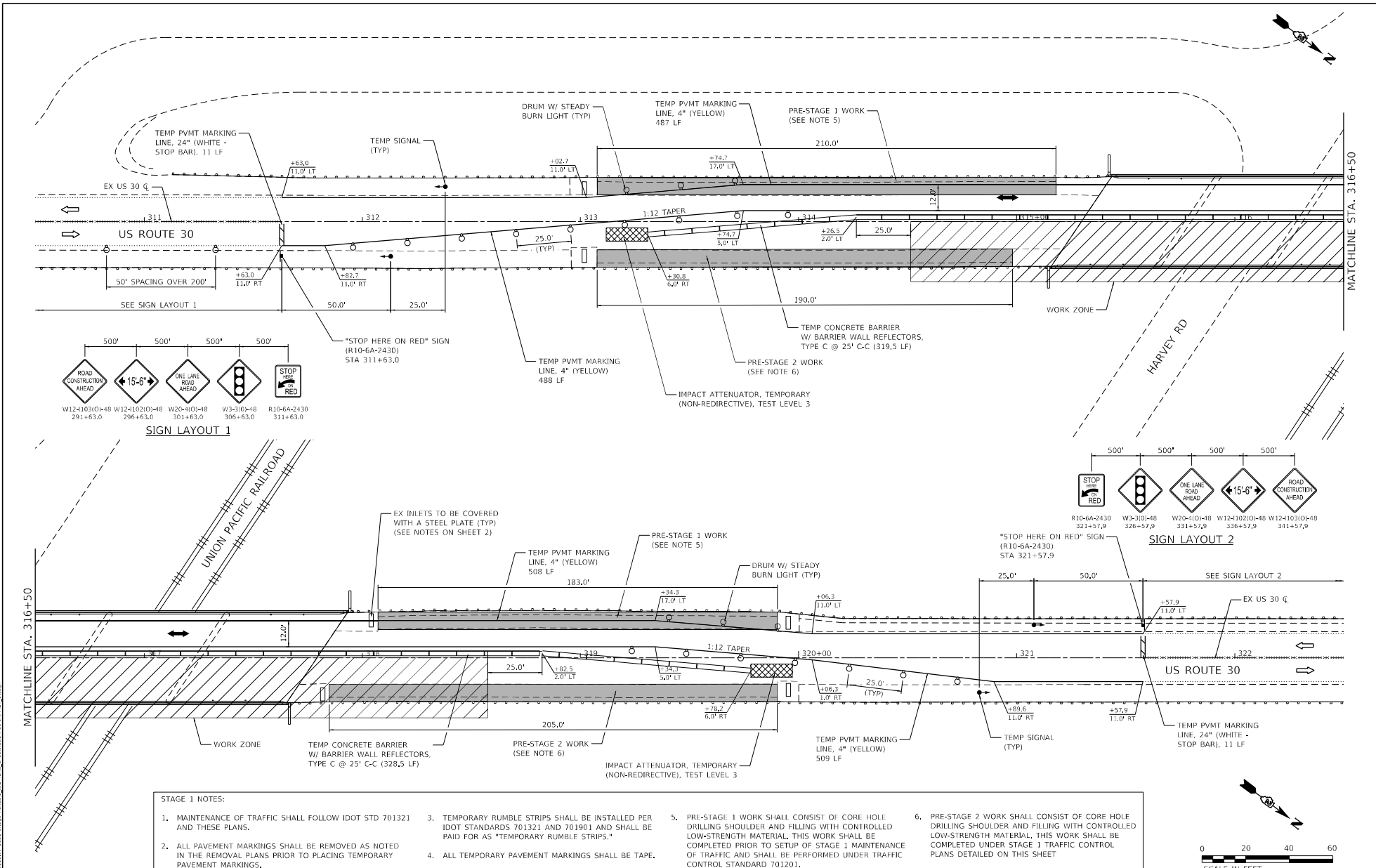
**STATE OF ILLINOIS**  
**DEPARTMENT OF TRANSPORTATION**

**ROADWAY IMPROVEMENT PLAN**  
**US 30 OVER UNION PACIFIC RAILROAD**

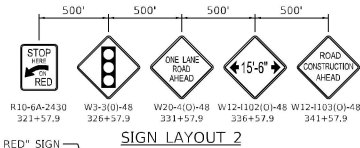
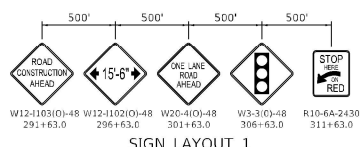
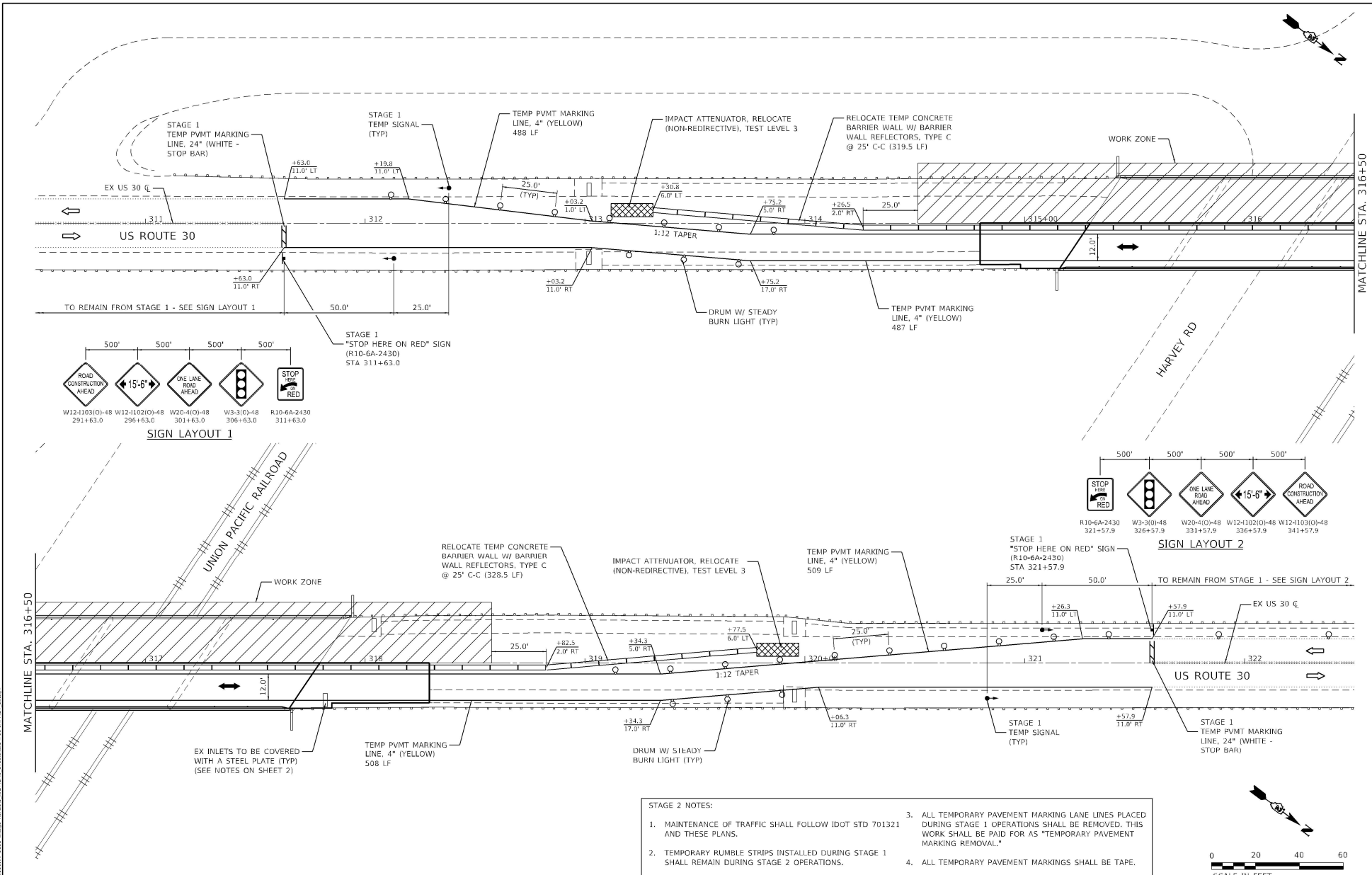
F.A.P. SITE	SECTION	COUNTY	TOTAL SHEETS	SHEET NO.
309	110V-BR1RDR	WHITESIDE	45	9
CONTRACT NO. 64P53				
ILLINOIS FED. AID PROJECT				

SCALE: 1"=20'    SHEET    OF    SHEETS    STA.    TO STA.





- STAGE 1 NOTES:**
- MAINTENANCE OF TRAFFIC SHALL FOLLOW IDOT STD 701321 AND THESE PLANS.
  - ALL PAVEMENT MARKINGS SHALL BE REMOVED AS NOTED IN THE REMOVAL PLANS PRIOR TO PLACING TEMPORARY PAVEMENT MARKINGS.
  - TEMPORARY RUMBLE STRIPS SHALL BE INSTALLED PER IDOT STANDARDS 701321 AND 701901 AND SHALL BE PAID FOR AS "TEMPORARY RUMBLE STRIPS."
  - ALL TEMPORARY PAVEMENT MARKINGS SHALL BE TAPE.
  - PRE-STAGE 1 WORK SHALL CONSIST OF CORE HOLE DRILLING SHOULDER AND FILLING WITH CONTROLLED LOW-STRENGTH MATERIAL, THIS WORK SHALL BE COMPLETED PRIOR TO SETUP OF STAGE 1 MAINTENANCE OF TRAFFIC AND SHALL BE PERFORMED UNDER TRAFFIC CONTROL STANDARD 701201.
  - PRE-STAGE 2 WORK SHALL CONSIST OF CORE HOLE DRILLING SHOULDER AND FILLING WITH CONTROLLED LOW-STRENGTH MATERIAL, THIS WORK SHALL BE COMPLETED UNDER STAGE 1 TRAFFIC CONTROL PLANS DETAILED ON THIS SHEET.



**STAGE 2 NOTES:**

1. MAINTENANCE OF TRAFFIC SHALL FOLLOW IDOT STD 701321 AND THESE PLANS.
2. TEMPORARY RUMBLE STRIPS INSTALLED DURING STAGE 1 SHALL REMAIN DURING STAGE 2 OPERATIONS.
3. ALL TEMPORARY PAVEMENT MARKING LANE LINES PLACED DURING STAGE 1 OPERATIONS SHALL BE REMOVED. THIS WORK SHALL BE PAID FOR AS "TEMPORARY PAVEMENT MARKING REMOVAL."
4. ALL TEMPORARY PAVEMENT MARKINGS SHALL BE TAPE.



USER NAME	= ndp	DESIGNED	= NDP	REVISED	=
DRAWN	= NDP	CHECKED	= PJF	REVISED	=
DATE	= 12/23/20	DATE	= 12/23/20	REVISED	=

**STATE OF ILLINOIS  
DEPARTMENT OF TRANSPORTATION**

**MAINTENANCE OF TRAFFIC PLAN – STAGE 2  
US 30 OVER UNION PACIFIC RAILROAD**

SCALE: 1"=20'    SHEET 2 OF 2 SHEETS    STA. TO STA.

F.A.P. SITE	SECTION	COUNTY	TOTAL SHEETS	SHEET NO.
309	(110V-BR)RDR	WHITESIDE	45	11
CONTRACT NO. 64P53				
ILLINOIS FED. AID PROJECT				

**EXISTING STRUCTURES:** SN 098-0099, originally built in 1990 as a five span reinforced concrete slab superstructure with open abutments, two concrete encased pile bent piers and two multi column piers on spread footings. The back to back length is 254'-6 1/4" and the out to out width is 43'-2". Traffic will be maintained utilizing staged construction. Existing structure skew = 34° Left Ahead.

**BENCH MARK #WHA 410:** Disk on NW Wingwall of bridge 22.37' Lt. of Sta. 317+93.91, El. 677.80

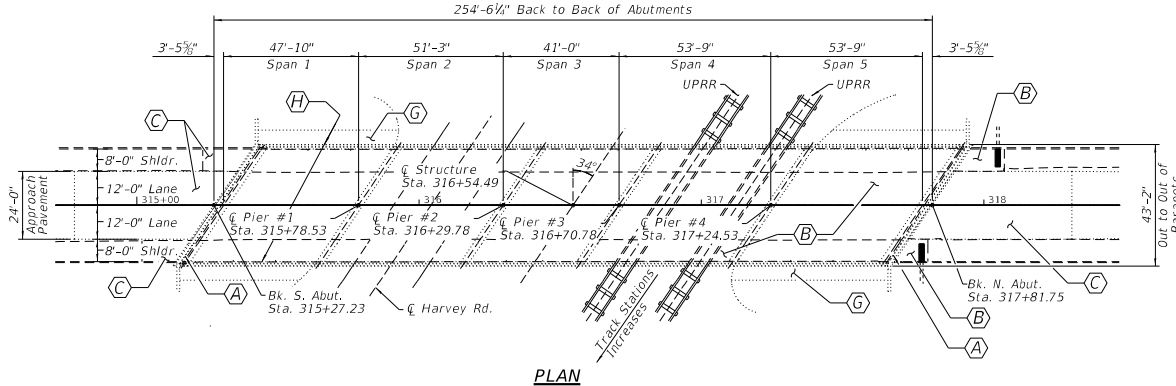
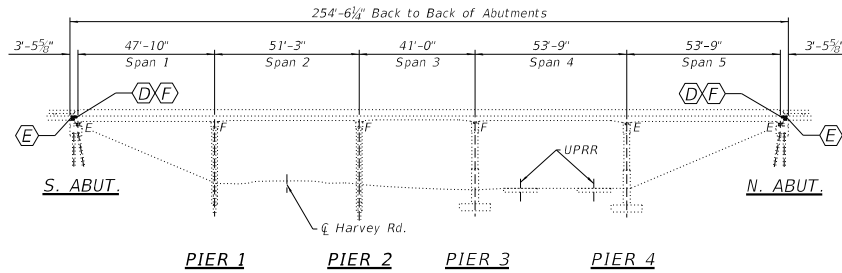
No salvage.

**SCOPE OF WORK:**

- (A) Remove existing expansion joints at the North and South abutments and install new preformed joint strip seals.
- (B) Scarify 2" of existing concrete, remove concrete for partial depth repair and install new 2 1/2" latex concrete overlay on the bridge deck and north concrete approach shoulder pavement. See Structural Sheets 3-11 for details.
- (C) Remove 2" HMA overlay, scarify 1" of existing concrete and install new 3 1/2" latex concrete overlay on north and south approach pavement and south approach shoulder pavement. See Structural Sheets 5-11 for details.
- (D) Clean and Paint Structural Steel Bearings at Abutments.
- (E) Approach Slab Pavement and Shoulder undermining Repair. See Structural Sheet 20 of 26 for details.
- (F) Structural concrete repair at abutment seats at several locations.
- (G) Slopewall repair. See Structural Sheet 26 of 26 for details.
- (H) Repair of concrete parapets at various locations shown on plans.

**INDEX OF STRUCTURAL SHEETS**

- 1-2 General Plan and Elevation
- 3 Stage I Layout - Bridge
- 4 Stage II Layout - Bridge
- 5 Stage I Layout - North Approach and Shoulder Pavement
- 6 Stage II Layout - North Approach and Shoulder Pavement
- 7 Stage I Layout - South Approach and Shoulder Pavement
- 8 Stage II Layout - South Approach and Shoulder Pavement
- 9 Stage I Layout - North and South Approaches
- 10 Stage II Layout - North and South Approaches
- 11 Overlay Plan
- 12-15 Top of Slab Elevations
- 16 Temporary Barrier for Stage Construction
- 17-18 Abutment Joint Replacement Details
- 19 Abutment Corner Replacement Details
- 20 Joint Replacement and Repair Details
- 21 Modified Preformed Joint Strip Seal
- 22 Bar Splicer Assembly and Mechanical Splicer Details
- 23 East Parapet Repair Details
- 24 West Parapet Repair Details
- 25 North and South Abutment Repair Details
- 26 Bituminous Slopewall Repairs



**DESIGN STRESSES**

**FIELD UNITS (NEW CONSTRUCTION)**

f'c = 4,000 psi (Superstructure)  
fy = 60,000 psi (Reinforcement)

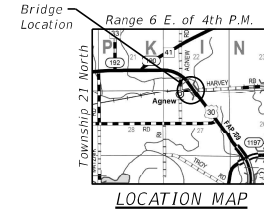
**FIELD UNITS (EXISTING CONSTRUCTION)**

f'c = 3,500 psi  
fy = 60,000 psi (Reinforcement)

**LOADING HS20-44**

**DESIGN SPECIFICATIONS**

2002 AASHTO Standard Specifications for Highway Bridges - LFD



**GENERAL PLAN AND ELEVATION  
US 30 OVER  
U.P. RAILROAD & HARVEY ROAD  
F.A.P. ROUTE 309 - SECTION (110V-BR)BDR  
WHITESIDE COUNTY  
STATION 316+54.49  
STRUCTURE NO. 098-0099**

FILE: S:\PROJECTS\2818\1427018\1DOT\DESIGN\CD\ SHEETS\VD 11\427018.DWG



USER NAME: tony	DESIGNED: ESG	REVISED: -
DRAWN: DAN	CHECKED: MRL	REVISED: -
DATE: 12/24/2020		

**STATE OF ILLINOIS  
DEPARTMENT OF TRANSPORTATION**

STRUCTURAL SHEET 1 OF 26 SHEETS

F.A.P. RTE.	SECTION	COUNTY	TOTAL SHEET SHEETS NO.
309	(110V-BR)BDR	WHITESIDE	45 12
WHA# 1427018		CONTRACT NO. 64P53	
ILLNOIS		FED. AID PROJECT	



**GENERAL NOTES:**

Reinforcement bars designated (E) shall be epoxy coated.

Plan dimensions and details relative to existing structure have been taken from existing plans and are subject to nominal construction variations. It shall be the Contractor's responsibility to verify such dimensions and details in the field and make necessary approved adjustments prior to construction or ordering of materials. Such variations shall not be cause for additional compensation for a change in scope of the however, the Contractor will be paid for the quantity actually furnished at the unit price bid for the work.

Any reinforcement bars that are damaged during concrete removal shall be replaced with an approved bar splicer or anchorage system. Cost shall be included in the cost of Concrete Removal.

Existing longitudinal reinforcement extending into the removal area shall be cleaned, straightened and incorporated into the new construction. Existing transverse reinforcement may be cut as shown and removed.

Joint openings shall be adjusted according to Article 503.10(c) of the Standard Specification when the joint is poured at an ambient temperature other than 50°F.

Protective coat shall be applied to new deck section on either side of expansion joint and to the new overlay.

Acrylic coating shall be applied to top & inside faces of existing & repaired parapets.

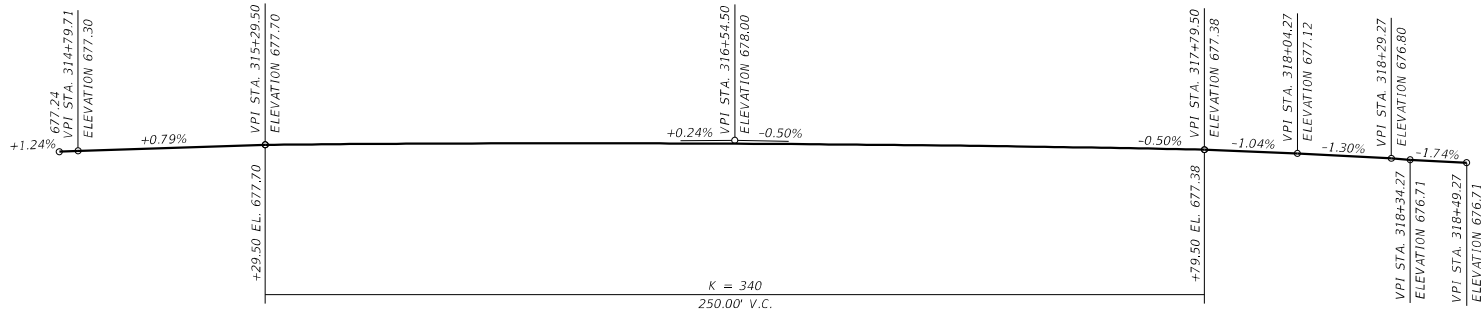
Cleaning and painting of the existing structural steel shall be specified in the special provision for "Cleaning and Painting Existing Steel Structures". Areas to be painted shall consist of all bearings at the abutments. Steel shall be cleaned per Power Tool Cleaning Modified SSPC-SP3. The designated areas to be Power Tool Cleaned shall be painted according to the requirements of Paint System 2-PS/EM/U. The color of the final finish coat shall be Interstate Green, Munsell No. 7.5G 4/8.

Up to 1/4" may be ground off bridge deck and the approach slabs.

**TOTAL BILL OF MATERIAL**

ITEM	UNIT	SUPER	SUB	TOTAL
Hot Mix Asphalt Surface Removal, 2"	Sq. Yd.	293	-	293
Concrete Removal	Cu. Yd.	9.5	-	9.5
Concrete Superstructure	Sq. Yd.	9.7	-	9.7
Protective Coat	Sq. Yd.	1,431	-	1,431
Reinforcement Bars, Epoxy Coated	Pound	1,350	-	1,350
Bar Splicers	Each	18	-	18
Preformed Joint Strip Seal	Foot	104	-	104
Controlled Low-Strength Material	Cu. Yd.	8.5	-	8.5
Mobilization	L Sum	-	-	1
Cleaning And Painting Exposed Rebar	L Sum	1	-	1
Acrylic Coating	Sq. Yd.	360	-	360
Bridge Deck Grooving (Longitudinal)	Sq. Yd.	935	-	935
Bridge Deck Latex Concrete Overlay, 2 1/2"	Sq. Yd.	1,137	-	1,137
Bridge Deck Latex Concrete Overlay, 3 1/2"	Sq. Yd.	293	-	293
Containment and Disposal of Non-Lead Paint Cleaning Residues	L Sum	-	-	1
Cleaning And Painting Steel Bridge	L Sum	1	-	1
Bridge Deck Scarification 1"	Sq. Yd.	293	-	293
Bridge Deck Scarification 2"	Sq. Yd.	1,137	-	1,137
Structural Repair Of Concrete (Depth Equal To Or Less Than 5 Inches)	Sq. Ft.	27	13	40
Diamond Grinding (Bridge Section)	Cu. Yd.	1,306	-	1,306
Railroad Protective Liability Insurance	Each	-	-	1
Bituminous Coated Aggregate SlopeWall, 6"	Tons	-	79	79

\* See Special Provisions.



**PROFILE GRADE**

**GENERAL PLAN AND ELEVATION  
US 30 OVER  
U.P. RAILROAD & HARVEY ROAD  
F.A.P. ROUTE 309 - SECTION (110V-BR)BDR  
WHITESIDE COUNTY  
STATION 316+54.49  
STRUCTURE NO. 098-0099**



**WILLET HOFMANN  
ASSOCIATES INC**  
INCORPORATED  
809 EAST 2ND STREET, DIXON, IL 61021-4367  
T 815-284-3381 DESIGN PRIN. 4184-0099P15

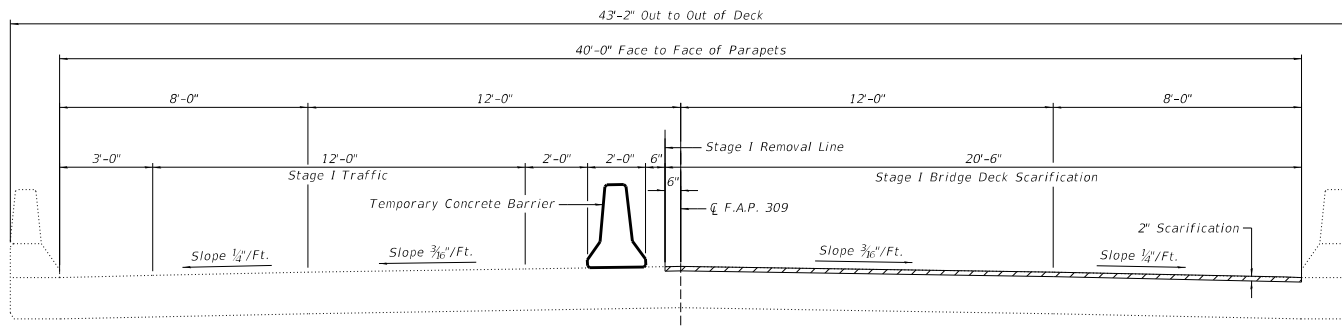
USER NAME	+ tony	DESIGNED	- ESG	REVISED	-
DRAWN	- DAN	REVISOR	-	REVISOR	-
PLOT SCALE	+ 2.0000' / 1"	CHECKED	- MRL	REVISOR	-
PLOT DATE	+ 5/19/2021	DATE	- 12/24/2020	REVISOR	-

**STATE OF ILLINOIS  
DEPARTMENT OF TRANSPORTATION**

F.A.P. RT#	SECTION	COUNTY	TOTAL SHEETS	SHEET NO.
309	(110V-BR)BDR	WHITESIDE	45	13
WHAP# 1427018		CONTRACT NO. 64P53		
ILLINOIS		FEED #0 PROJECT		

STRUCTURAL SHEET 2 OF 26 SHEETS

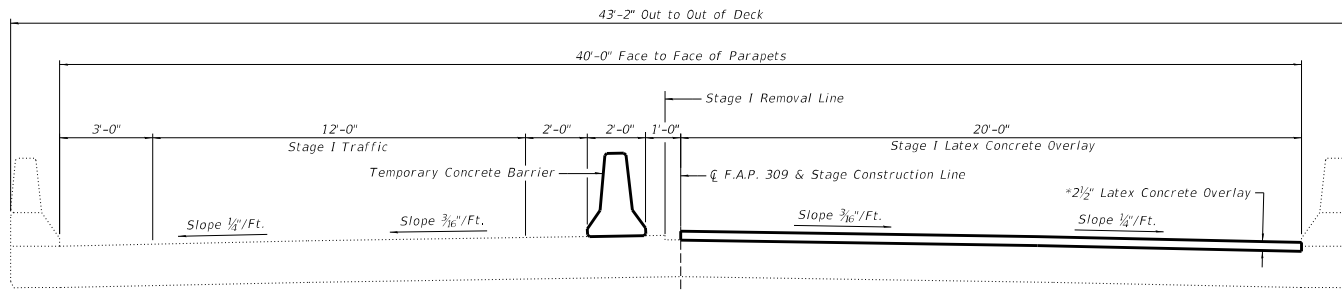
FILE - S:\PROJECTS\281B\1427018\DOT\DESIGN\CAD\_SHEETS\VD\1427018.Stage Construction Layout - Bridge.dgn



**STAGE I PARTIAL DECK REMOVAL**  
(Looking North)

**LEGEND**

 Bridge Deck Scarification



**STAGE I CONSTRUCTION**  
(Looking North)

\*Prior to grinding  
See Structural Sheet 11 of 26 for  
Overlay Limits and Bill of Material



USER NAME	+ tony	DESIGNED	- ESG	REVISED	-
		DRAWN	- DAN	REVISED	-
PLOT SCALE	+ 2.0000' / 1"	CHECKED	- MRL	REVISED	-
PLOT DATE	+ 5/19/2021	DATE	- 12/24/2020	REVISED	-

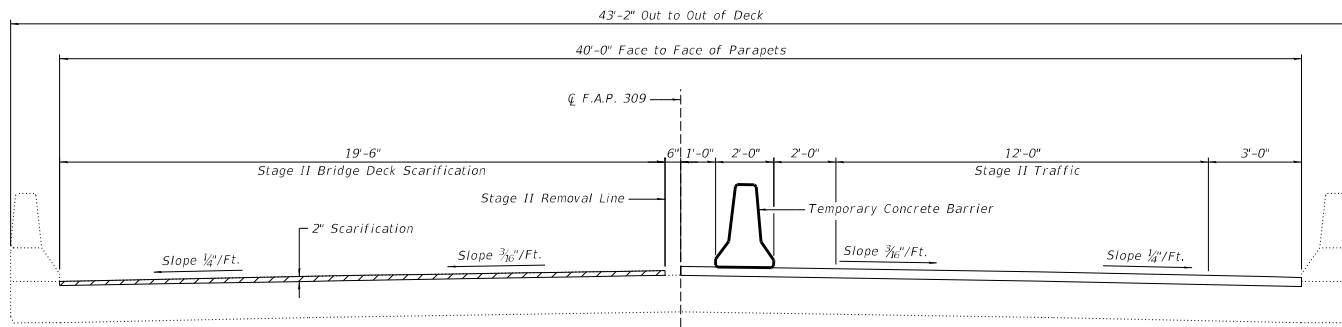
STATE OF ILLINOIS  
DEPARTMENT OF TRANSPORTATION

STAGE I LAYOUT - BRIDGE  
STRUCTURE NO. 098-0099

STRUCTURAL SHEET 3 OF 26 SHEETS

F.A.P. RTE.	SECTION	COUNTY	TOTAL SHEETS	SHEET NO.
309	(110V-BR)BDR	WHITESIDE	45	14
WHAP# 1427018		CONTRACT NO. 64P53		
ILLINOIS		FED. AID PROJECT		

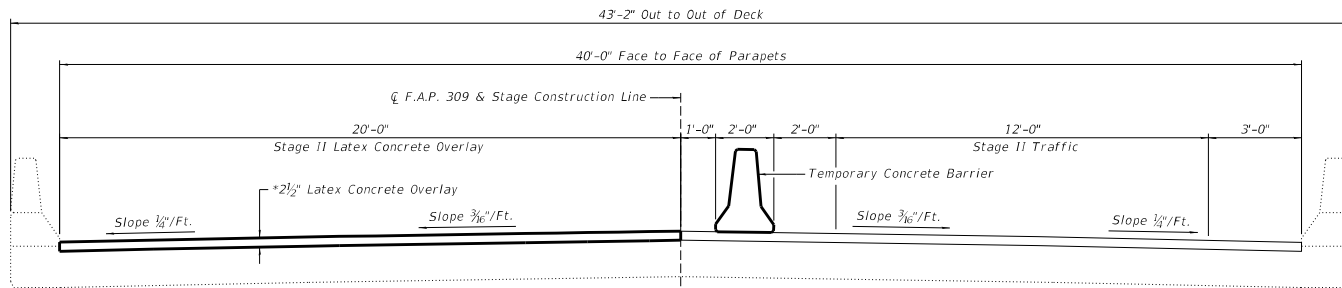
FILE - S:\PROJECTS\2818\1427018\DOT\DESIGN\CD\ SHEETS\VD 1\1427018.Stage Construction Layout - Bridge.dgn



**STAGE II PARTIAL DECK REMOVAL**  
(Looking North)

**LEGEND**

Bridge Deck Scarification



**STAGE II CONSTRUCTION**  
(Looking North)

\*Prior to grinding  
See Structural Sheet 11 of 26 for  
Overlay Limits and Bill of Material



USER NAME	* tony	DESIGNED	- ESG	REVISED	-
		DRAWN	- DAN	REVISED	-
PLOT SCALE	* 2.8800' / 1"	CHECKED	- MRL	REVISED	-
PLOT DATE	* 5/19/2021	DATE	- 12/24/2020	REVISED	-

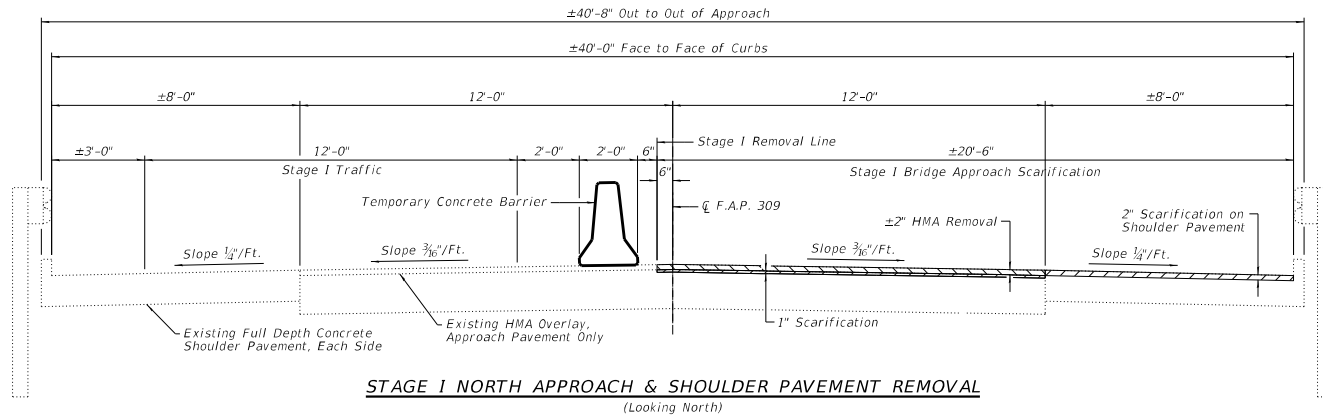
STATE OF ILLINOIS  
DEPARTMENT OF TRANSPORTATION

STAGE II LAYOUT - BRIDGE  
STRUCTURE NO. 098-0099

STRUCTURAL SHEET 4 OF 26 SHEETS

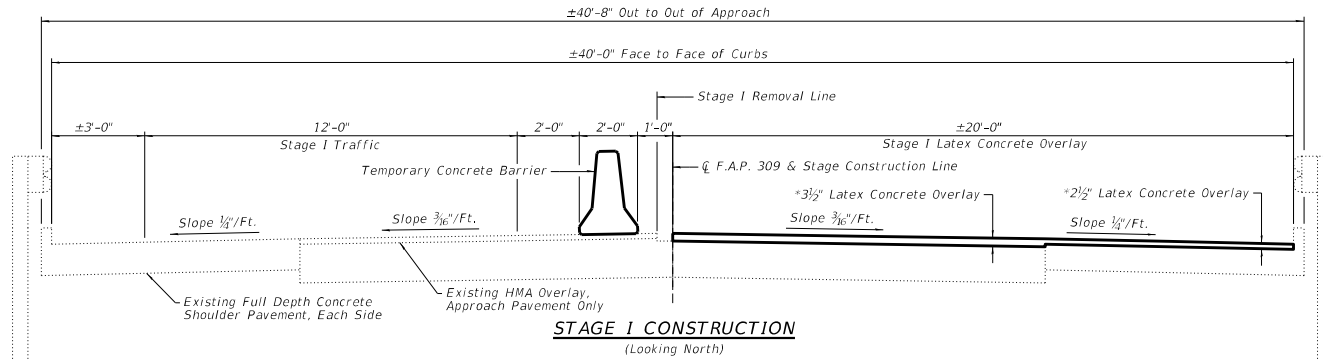
F.A.P. RTE.	SECTION	COUNTY	TOTAL SHEETS	SHEET NO.
309	(110V-BR)BDR	WHITESIDE	45	15
WHAP# 1427018			CONTRACT NO. 64P53	
ILLINOIS			FED. AID PROJECT	

FILE: S:\PROJECTS\281B\1427018\DOT\DESIGN\CD\ SHEETS\VD\1427018.Stage Layout\N. Approaches & Shoulder Pavement.dwg



**LEGEND**

- Bridge Deck Scarification
- HMA Removal



\*Prior to grinding  
See Structural Sheet 11 of 26 for  
Overlay Limits and Bill of Material



**WILLETT HOFMANN**  
ASSOCIATES INC.  
INCORPORATED  
809 EAST 2ND STREET, CHICAGO, IL 60601-4367  
T: 815-284-3381 DESKON FIRM: 4784-0099P15

USER NAME	: tony	DESIGNED	: ESG	REVISION	: -
DRAWN	: DAN	CHECKED	: MRL	REVISION	: -
PLOT SCALE	: 2.0000' / 1"	DATE	: 12/24/2020	REVISION	: -
PLOT DATE	: 5/19/2021				

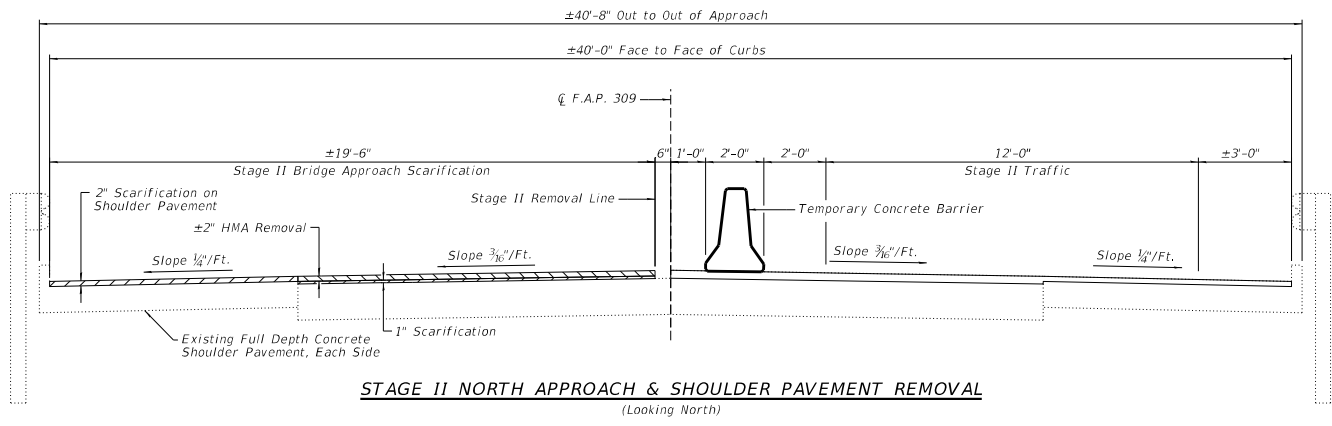
**STATE OF ILLINOIS**  
**DEPARTMENT OF TRANSPORTATION**

**STAGE I LAYOUT - NORTH APPROACH AND SHOULDER PAVEMENT**  
**STRUCTURE NO. 098-0099**


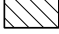
F.A.P. RTE.	SECTION	COUNTY	TOTAL SHEETS	SHEET NO.
309	(110V-BR/BDR)	WHITESIDE	45	16
WHAP# 1427018		CONTRACT NO. 64P53		
ILLINOIS		FED. AID PROJECT		

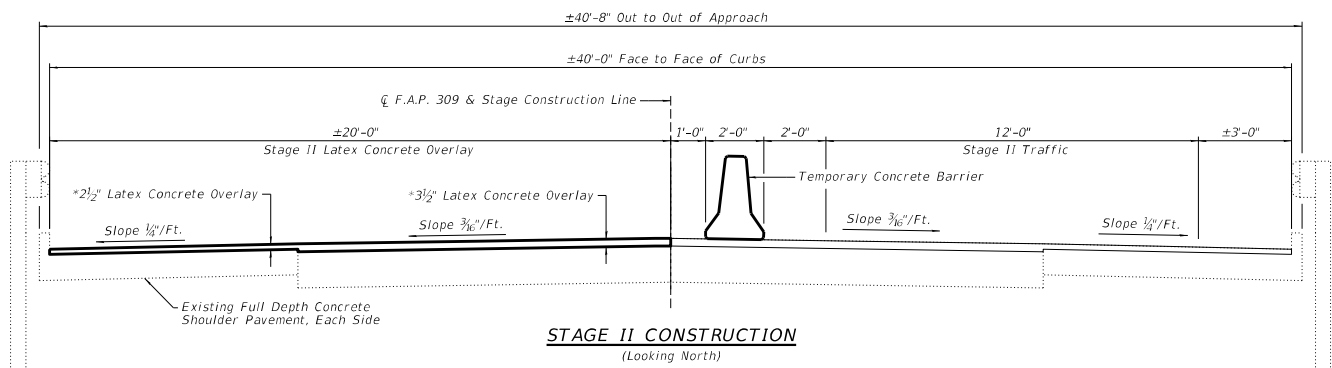
STRUCTURAL SHEET 5 OF 26 SHEETS

FILE: S:\PROJECTS\281B\1427018\DOT\DESIGN\CD\ SHEETS\VD 11\1427018.Stage Layout\N Approaches & Shoulder Pavement.dgn



**LEGEND**

-  Bridge Deck Scarification
-  HMA Removal



\*Prior to grinding  
See Structural Sheet 11 of 26 for  
Overlay Limits and Bill of Material

**WILLET HOFMANN**  
ASSOCIATES INC.  
INCORPORATED  
809 EAST 2ND STREET, CHICAGO, IL 60601-4367  
T: 815-284-3381 DESIGNS: 4184-0009P15

USER NAME	+ tony	DESIGNED	- ESG	REVISED	-
		DRAWN	- DAN	REVISED	-
PLOT SCALE	+ 2:8000	CHECKED	- MRL	REVISED	-
PLOT DATE	+ 5/19/2021	DATE	- 12/24/2020	REVISED	-

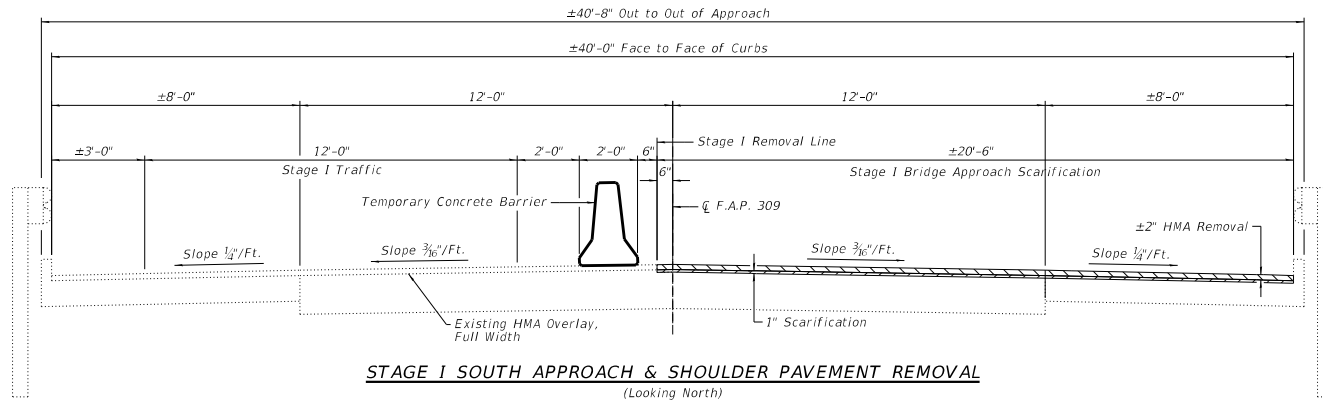
STATE OF ILLINOIS  
DEPARTMENT OF TRANSPORTATION

STAGE II LAYOUT - NORTH APPROACH AND SHOULDER PAVEMENT  
STRUCTURE NO. 098-0099

F.A.P. RTE.	SECTION	COUNTY	TOTAL SHEETS	SHEET NO.
309	(110V-BR)BDR	WHITESIDE	45	17
WHAP 1427018		CONTRACT NO. 64P53		
ILLNOIS		FED. AID PROJECT		

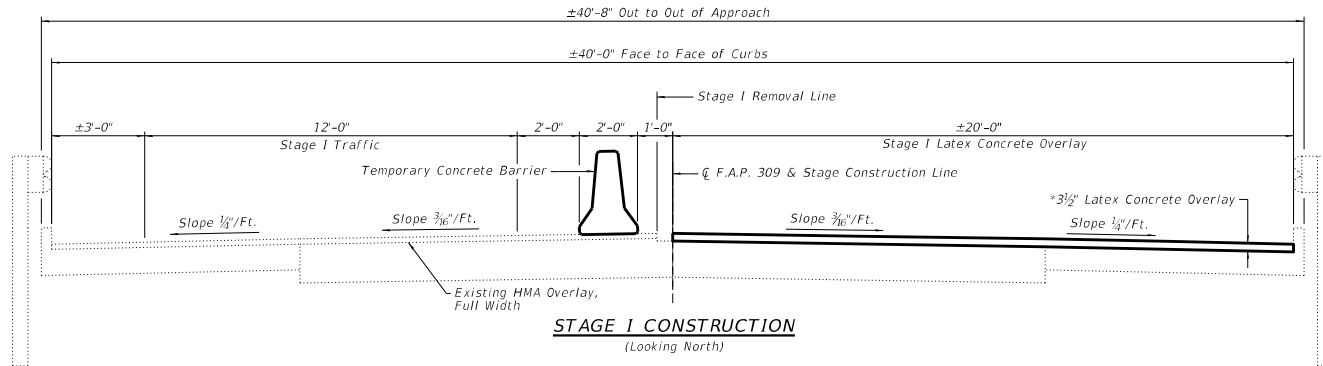
STRUCTURAL SHEET 6 OF 26 SHEETS

FILE - S:\PROJECTS\281B\1427018\DOT\DESIGN\CAD\_SHEETS\VD\1427018.Stage\_1\Layout\_S\_Approaches & Shoulder\_Pavement.dgn



**LEGEND**

- Bridge Deck Scarification
- HMA Removal



\*Prior to grinding  
See Structural Sheet 11 of 26 for  
Overlay Limits and Bill of Material



**WILLETT HOFMANN**  
ASSOCIATES INC.  
INCORPORATED  
809 EAST 2ND STREET, CHICAGO, IL 60601-4367  
T: 815-284-3381 DESIGNS: 4184-0009P15

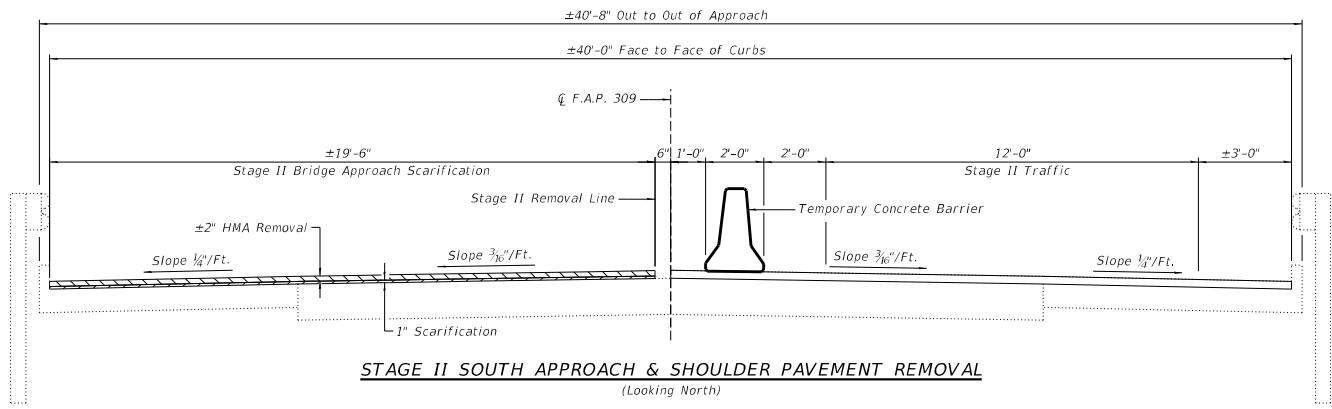
USER NAME	tony	DESIGNED	ESG	REVISED	-
DRAWN	DAN	CHECKED	MRL	REVISED	-
PLOT SCALE	2:8000	DATE	12/24/2020	REVISED	-
PLOT DATE	5/19/2021				

**STATE OF ILLINOIS**  
**DEPARTMENT OF TRANSPORTATION**

**STAGE I LAYOUT - SOUTH APPROACH AND SHOULDER PAVEMENT**  
**STRUCTURE NO. 098-0099**

STRUCTURAL SHEET 7 OF 26 SHEETS

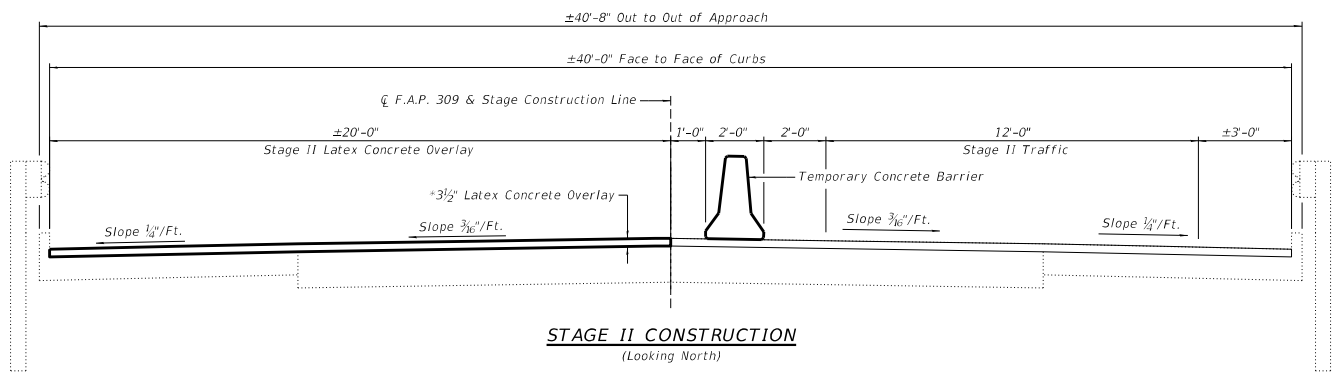
F.A.P. RTE.	SECTION	COUNTY	TOTAL SHEETS	SHEET NO.
309	(110V-BR)BDR	WHITESIDE	45	18
WHA# 1427018		CONTRACT NO. 64P53		
ILLINOIS		FED. AID PROJECT		



**STAGE II SOUTH APPROACH & SHOULDER PAVEMENT REMOVAL**  
(Looking North)

**LEGEND**

- Bridge Deck Scarification
- HMA Removal



**STAGE II CONSTRUCTION**  
(Looking North)

\*Prior to grinding  
See Structural Sheet 11 of 26 for  
Overlay Limits and Bill of Material

FILE - S:\PROJECTS\281B\1427018.IDOT\DESIGN\CD\ SHEETS\VD 1\1427018.Stage Layout.S Approaches & Shoulder Pavement.dgn

**WILLET HOFMANN**  
ASSOCIATES INC.  
INCORPORATED  
809 EAST 2ND STREET, DIXON, IL 61021-4367  
T: 815-284-3381 DESIGN PRIN. 4184-0009P10

USER NAME	• tony	DESIGNED	- ESG	REVISED	-
		DRAWN	- DAN	REVISED	-
PLOT SCALE	• 2.0000' / 1"	CHECKED	- MRL	REVISED	-
PLOT DATE	• 5/19/2021	DATE	- 12/24/2020	REVISED	-

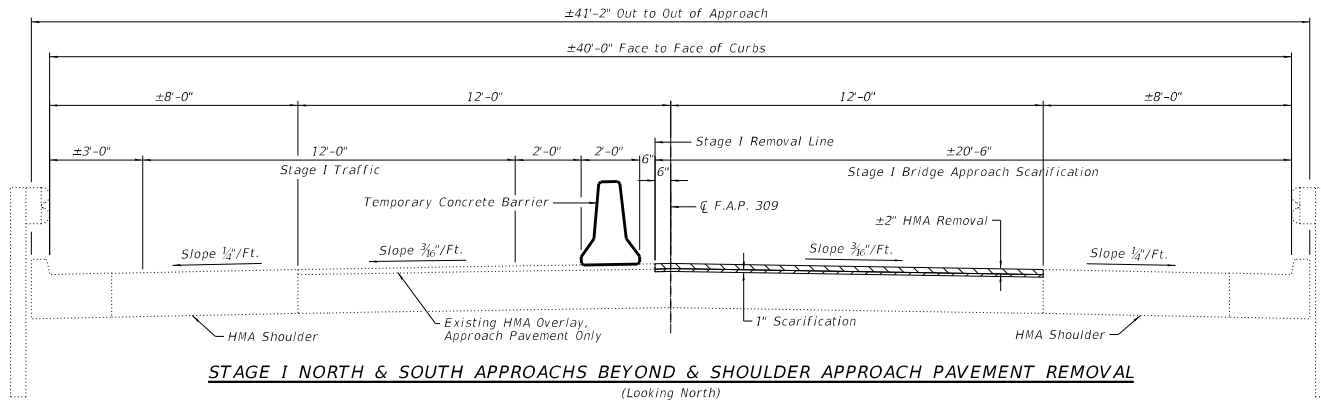
**STATE OF ILLINOIS**  
**DEPARTMENT OF TRANSPORTATION**

**STAGE II LAYOUT - SOUTH APPROACH AND SHOULDER PAVEMENT**  
**STRUCTURE NO. 098-0099**

F.A.P. RTE.	SECTION	COUNTY	TOTAL SHEETS	SHEET NO.
309	(110V-BR)BDR	WHITESIDE	45	19
WH&P 1427018		CONTRACT NO. 64P53		
ILLINOIS		FED. AID PROJECT		

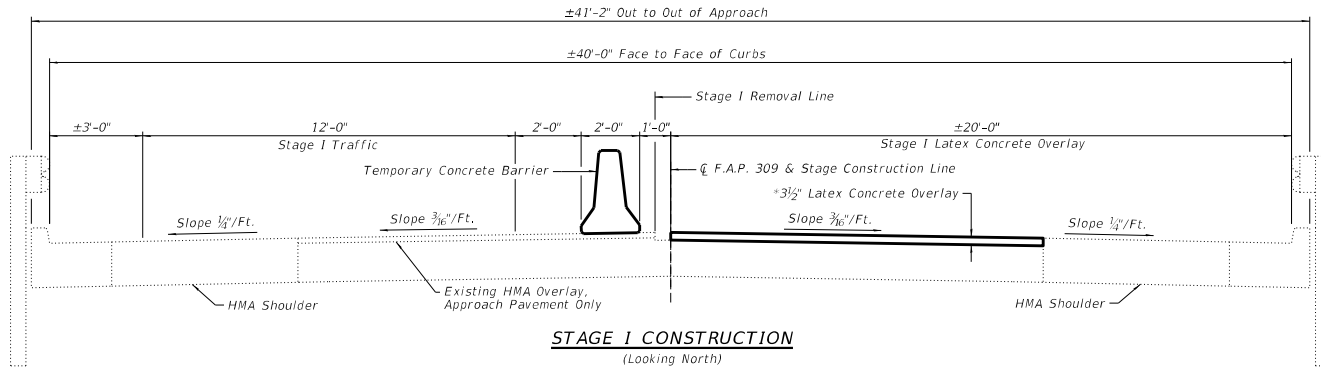
STRUCTURAL SHEET 8 OF 26 SHEETS

FILE - S:\PROJECTS\281B\1427018\DOT\DESIGN\CAD\_SHEETS\VD\1427018.Stage Layout\_N & S.Beyond Shoulder Approach Pavement.dwg



**LEGEND**

- Bridge Deck Scarification
- HMA Removal



\*Prior to grinding  
See Structural Sheets 11 of 26 for  
Overlay Limits and Bill of Material



USER NAME	• tony	DESIGNED	- ESG	REVISED	-
		DRAWN	- DAN	REVISED	-
PLOT SCALE	• 2.0000' / 1"	CHECKED	- MRL	REVISED	-
PLOT DATE	• 5/19/2021	DATE	- 12/24/2020	REVISED	-

**STATE OF ILLINOIS  
DEPARTMENT OF TRANSPORTATION**

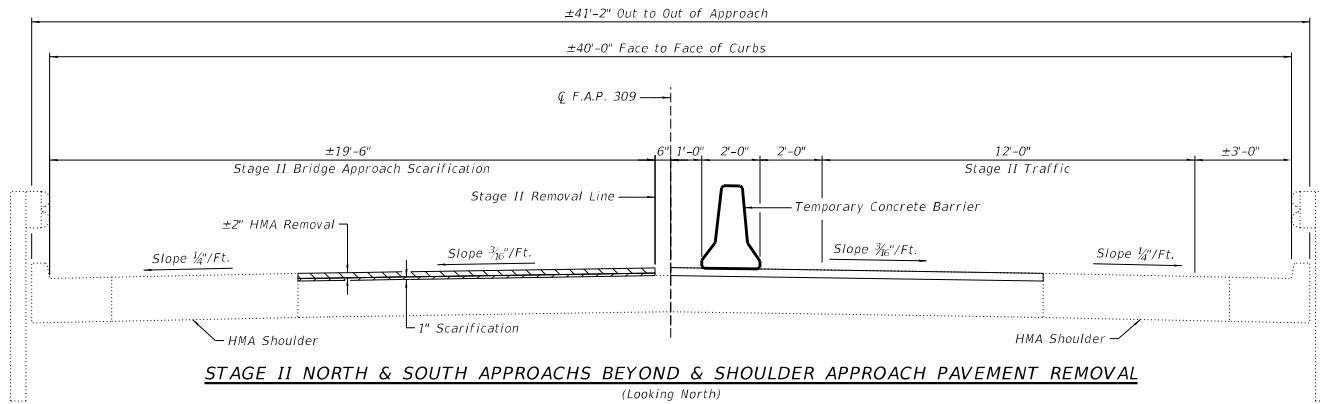
**STAGE I LAYOUT - NORTH AND SOUTH APPROACHES BEYOND  
SHOULDER APPROACH PAVEMENT - STRUCTURE NO. 098-0099**

STRUCTURAL SHEET 9 OF 26 SHEETS

F.A.P. RTE.	SECTION	COUNTY	TOTAL SHEETS	SHEET NO.
309	(110)-BR/BD	WHITESIDE	45	20
WHA# 1427018		CONTRACT NO. 64P53		
ILLINOIS		FED. AID PROJECT		

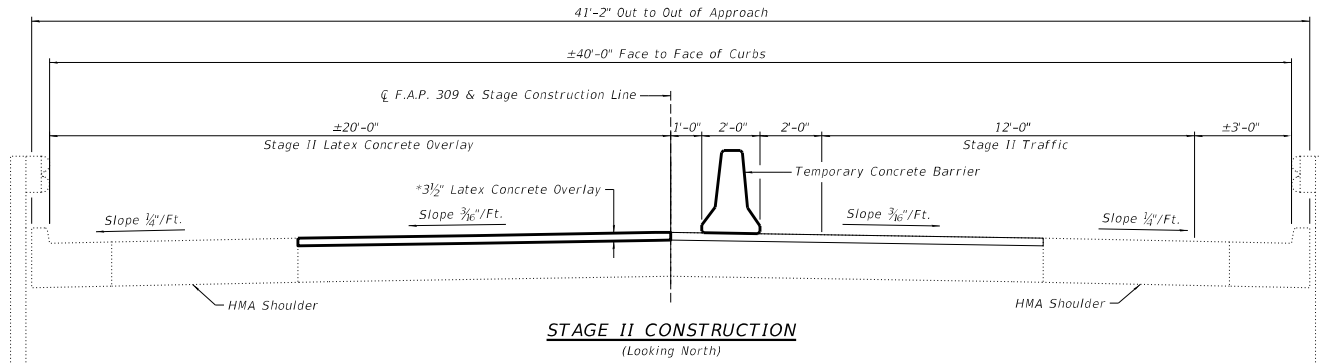


FILE - S:\PROJECTS\281B\1427018\DOT\DESIGN\CD\ SHEETS\VD 1\1427018.Stage Layout.N & S.Beyond Shoulder Approach Pavement.cdr



**LEGEND**

- Bridge Deck Scarification
- HMA Removal



\*Prior to grinding  
See Structural Sheets 11 of 26 for  
Overlay Limits and Bill of Material



USER NAME	• tony	DESIGNED	- ESG	REVISED	-
		DRAWN	- DAN	REVISED	-
PLOT SCALE	• 2:8000	CHECKED	- MRL	REVISED	-
PLOT DATE	• 5/19/2021	DATE	- 12/24/2020	REVISED	-

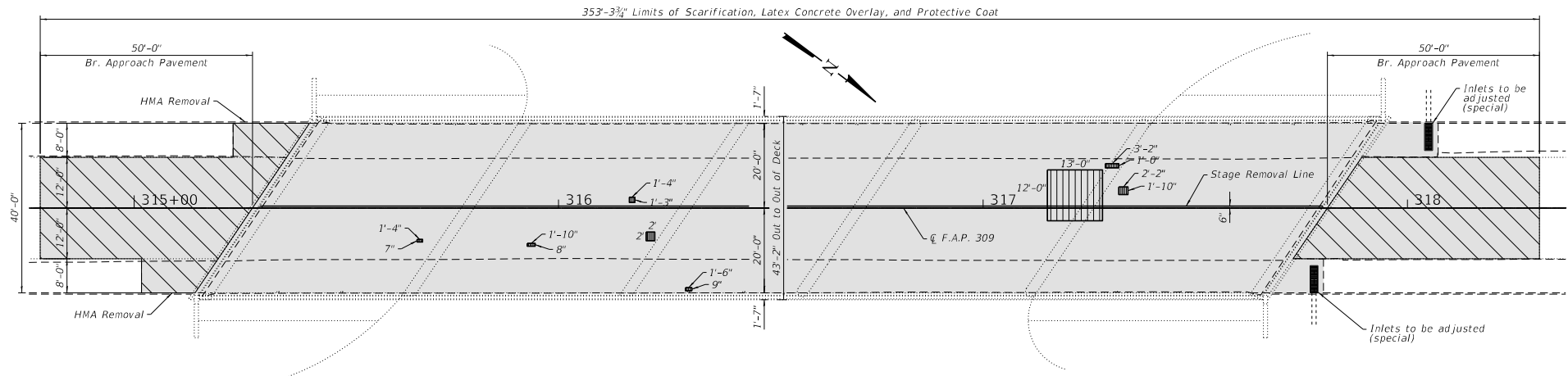
**STATE OF ILLINOIS  
DEPARTMENT OF TRANSPORTATION**

**STAGE II LAYOUT - NORTH AND SOUTH APPROACHES BEYOND  
SHOULDER APPROACH PAVEMENT - STRUCTURE NO. 098-0099**

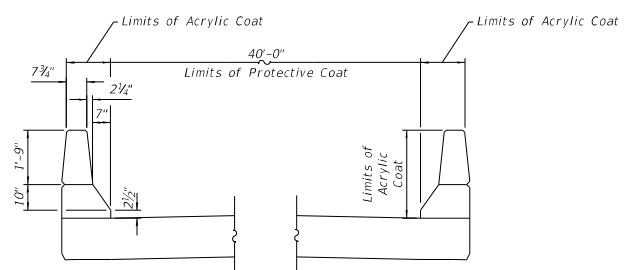
F.A.P. RTE.	SECTION	COUNTY	TOTAL SHEETS	SHEET NO.
309	(110)-BR/BD	WHITESIDE	45	21
WHA# 1427018		CONTRACT NO. 64P53		
ILLINOIS		FED. AID PROJECT		

STRUCTURAL SHEET 10 OF 26 SHEETS

FILE: S:\PROJECTS\2818\1427018.LDOT\DESIGN\CAD\_SHEETS\VD 11\427018\_Overlay\_Plan.dgn



PLAN VIEW



COAT LIMITS

**NOTES:**

- See Structural Sheets 3 and 4 of 26 for bridge deck overlay details.
- See Structural Sheets 5 to 10 of 26 for approach slab overlay details.
- Limits of Bridge Deck Grooving (Longitudinal) shall be full width of traffic lane.
- Limits of Diamond Grinding shall be face to face of parapet or curb minus 4'-0".
- \* Includes Bridge Deck, Approach Pavement and Approach Shoulder Pavements.
- \*\* Includes Bridge Deck and Approach Pavement.
- \*\*\* For information only. Deck Slab Repair, if required, shall be paid for as specified in GBSP 30, Bridge Deck Latex Overlay.

**LEGEND:**

- Deck Slab Repair (Partial) \*\*\*
- Bridge Deck Scarification 2"; Latex Concrete Overlay, 2 1/2"; 1/4" Diamond Grinding
- HMA Removal, 2"; Bridge Deck Scarification, 1"; Latex Concrete Overlay, 3 1/2"; 1/4" Diamond Grinding

**BILL OF MATERIAL**

ITEM	UNIT	TOTAL
Hot Mix Asphalt Surface Removal, 2"	Sq. Yd.	293
Protective Coat	Sq. Yd.	1,431
* Bridge Deck Latex Concrete Overlay 2 1/2"	Sq. Yd.	1,137
* Bridge Deck Latex Concrete Overlay 3 1/2"	Sq. Yd.	293
* Bridge Deck Scarification 1"	Sq. Yd.	293
* Bridge Deck Scarification 2"	Sq. Yd.	1,137
* Diamond Grinding (Bridge Section)	Sq. Yd.	1,306
** Bridge Deck Grooving (Longitudinal)	Sq. Yd.	935

**WILLET HOFMANN ASSOCIATES INC.**  
 INCORPORATED JACKSONVILLE, FLORIDA  
 809 EAST 2ND STREET, JACKSONVILLE, FLORIDA 32202  
 T 904-384-3381 DESIGN PRIN. #184-0009F18

USER NAME	* tony	DESIGNED	- ESG	REVISED	-
		DRAWN	- DAN	REVISED	-
PLOT SCALE	* 2.8800' / 1"	CHECKED	- MRL	REVISED	-
PLOT DATE	* 5/19/2021	DATE	- 12/24/2020	REVISED	-

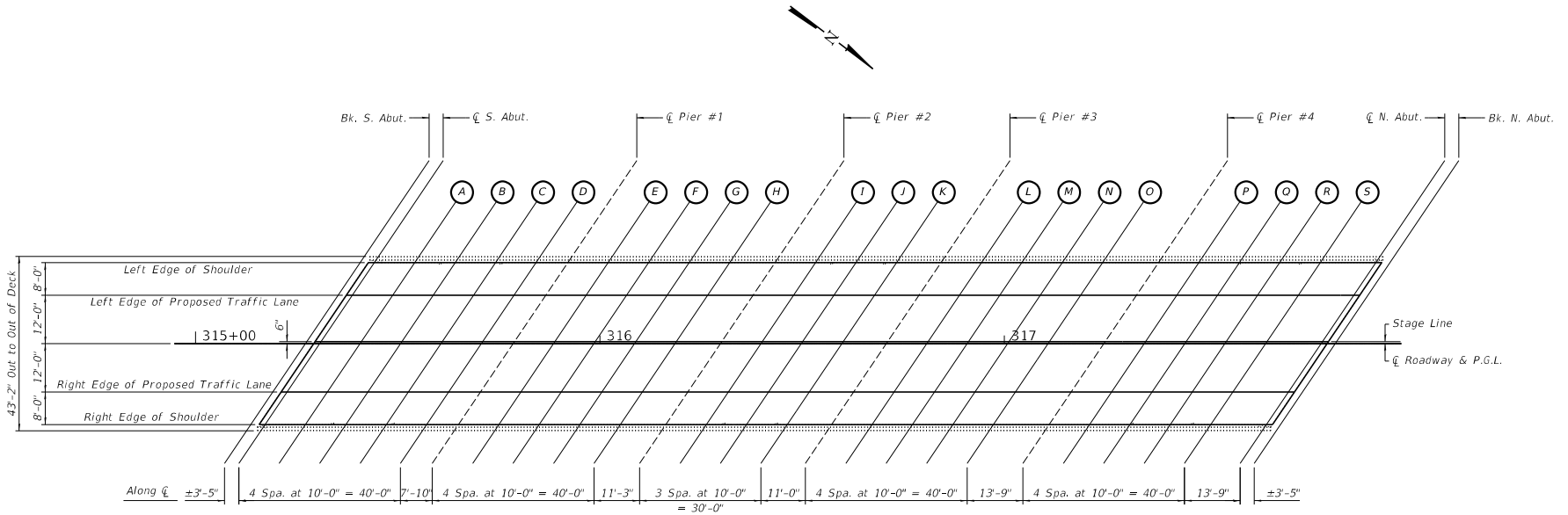
**STATE OF ILLINOIS  
 DEPARTMENT OF TRANSPORTATION**

**OVERLAY PLAN  
 STRUCTURE NO. 098-0099**

STRUCTURAL SHEET 11 OF 26 SHEETS

F.A.P. RITE	SECTION	COUNTY	TOTAL SHEET
309	(110)-BR/BDR	WHITESIDE	45
	WH&P 1427018		22
	ILLNDOS	CONTRACT NO. 64P53	
		FEEDBACK PROJECT	

FILE: S:\PROJECTS\2818\1427018\DOT\DESIGN\CD\ SHEETS\NO 11\1427018\_Top of Slab Elevations.dgn



PLAN VIEW



**WILLETT HOFMANN**  
ASSOCIATES, INC.  
REGISTERED ARCHITECTS AND ENGINEERS  
809 EAST 2ND STREET, CHICAGO, IL 60611-4367  
T 815-284-3381 DESIGN ROOM 4184-009915

USER NAME	tony	DESIGNED	ESG	REVISED	-
		DRAWN	DAN	REVISED	-
PLOT SCALE	2.8800' / 1"	CHECKED	MRL	REVISED	-
PLOT DATE	5/19/2021	DATE	12/24/2020	REVISED	-

STATE OF ILLINOIS  
DEPARTMENT OF TRANSPORTATION

TOP OF SLAB ELEVATIONS  
STRUCTURE NO. 098-0099

STRUCTURAL SHEET 12 OF 26 SHEETS

F&P RTE.	SECTION	COUNTY	TOTAL SHEET SHEETS	SHEET NO.
309	110V-BR/BDR	WHITESIDE	45	23
WHA# 1427018			CONTRACT NO. 64P53	
ILLINOIS			FED. AID PROJECT	

LEFT EDGE OF SHOULDER

Location	Station	Offset Lt.	Theoretical Grade Elevations
Bk. Of S. Abut.	315+40.72	20.00	677.37
CL S. Abut.	315+44.19	20.00	677.38
A	315+54.19	20.00	677.40
B	315+64.19	20.00	677.41
C	315+74.19	20.00	677.42
D	315+84.19	20.00	677.43
CL Pier #1	315+92.02	20.00	677.44
E	316+02.02	20.00	677.44
F	316+12.02	20.00	677.44
G	316+22.02	20.00	677.44
H	316+32.02	20.00	677.44
CL Pier #2	316+43.27	20.00	677.43
I	316+53.27	20.00	677.42
J	316+63.27	20.00	677.40
H	316+73.27	20.00	677.39
CL Pier #3	316+84.27	20.00	677.36
L	316+94.27	20.00	677.34
M	317+04.27	20.00	677.32
N	317+14.27	20.00	677.29
O	317+24.27	20.00	677.25
CL Pier #4	317+38.02	20.00	677.21
P	317+48.02	20.00	677.17
Q	317+58.02	20.00	677.13
R	317+68.02	20.00	677.08
S	317+78.02	20.00	677.03
CL N. Abut.	317+91.77	20.00	676.90
Bk. Of N. Abut.	317+95.24	20.00	676.86

LEFT EDGE OF PROPOSED TRAFFIC LANE

Location	Station	Offset Lt.	Theoretical Grade Elevations
Bk. Of S. Abut.	315+35.32	12	677.53
CL S. Abut.	315+38.79	12	677.53
A	315+48.79	12	677.55
B	315+58.79	12	677.57
C	315+68.79	12	677.58
D	315+78.79	12	677.60
CL Pier #1	315+86.63	12	677.60
E	315+96.63	12	677.61
F	316+06.63	12	677.61
G	316+16.63	12	677.61
H	316+26.63	12	677.61
CL Pier #2	316+37.88	12	677.60
I	316+47.88	12	677.59
J	316+57.88	12	677.58
H	316+67.88	12	677.56
CL Pier #3	316+78.88	12	677.54
L	316+88.88	12	677.52
M	316+98.88	12	677.50
N	317+08.88	12	677.47
O	317+18.88	12	677.44
CL Pier #4	317+32.63	12	677.39
P	317+42.63	12	677.36
Q	317+52.63	12	677.32
R	317+62.63	12	677.27
S	317+72.63	12	677.23
CL N. Abut.	317+86.38	12	677.12
Bk. Of N. Abut.	317+89.84	12	677.08

STAGE LINE

Location	Station	Offset Lt.	Theoretical Grade Elevations
Bk. Of S. Abut.	315+27.57	0.5	677.68
CL S. Abut.	315+31.04	0.5	677.70
A	315+41.04	0.5	677.72
B	315+51.04	0.5	677.74
C	315+61.04	0.5	677.75
D	315+71.04	0.5	677.77
CL Pier #1	315+78.87	0.5	677.77
E	315+88.87	0.5	677.78
F	315+98.87	0.5	677.79
G	316+08.87	0.5	677.79
H	316+18.87	0.5	677.79
CL Pier #2	316+30.12	0.5	677.78
I	316+40.12	0.5	677.78
J	316+50.12	0.5	677.77
H	316+60.12	0.5	677.75
CL Pier #3	316+71.12	0.5	677.74
L	316+81.12	0.5	677.72
M	316+91.12	0.5	677.70
N	317+01.12	0.5	677.67
O	317+11.12	0.5	677.64
CL Pier #4	317+24.87	0.5	677.60
P	317+34.87	0.5	677.56
Q	317+44.87	0.5	677.53
R	317+54.87	0.5	677.49
S	317+64.87	0.5	677.44
CL N. Abut.	317+78.62	0.5	677.38
Bk. Of N. Abut.	317+82.09	0.5	677.35

CL OF ROADWAY & P.G.L.

Location	Station	Offset Lt.	Theoretical Grade Elevations
Bk. Of S. Abut.	315+27.23	0.00	677.68
CL S. Abut.	315+30.70	0.00	677.70
A	315+40.70	0.00	677.73
B	315+50.70	0.00	677.74
C	315+60.70	0.00	677.76
D	315+70.70	0.00	677.77
CL Pier #1	315+78.53	0.00	677.78
E	315+88.53	0.00	677.79
F	315+98.53	0.00	677.80
G	316+08.53	0.00	677.80
H	316+18.53	0.00	677.80
CL Pier #2	316+29.78	0.00	677.79
I	316+39.78	0.00	677.79
J	316+49.78	0.00	677.78
H	316+59.78	0.00	677.76
CL Pier #3	316+70.78	0.00	677.75
L	316+80.78	0.00	677.73
M	316+90.78	0.00	677.70
N	317+00.78	0.00	677.68
O	317+10.78	0.00	677.65
CL Pier #4	317+24.53	0.00	677.61
P	317+34.53	0.00	677.57
Q	317+44.53	0.00	677.54
R	317+54.53	0.00	677.49
S	317+64.53	0.00	677.45
CL N. Abut.	317+78.28	0.00	677.39
Bk. Of N. Abut.	317+81.75	0.00	677.36

RIGHT EDGE OF PROPOSED TRAFFIC LANE

Location	Station	Offset Rt.	Theoretical Grade Elevations
Bk. Of S. Abut.	315+19.14	12.00	677.43
CL S. Abut.	315+22.60	12.00	677.46
A	315+32.60	12.00	677.52
B	315+42.60	12.00	677.54
C	315+52.60	12.00	677.56
D	315+62.60	12.00	677.58
CL Pier #1	315+70.44	12.00	677.59
E	315+80.44	12.00	677.60
F	315+90.44	12.00	677.60
G	316+00.44	12.00	677.61
H	316+10.44	12.00	677.61
CL Pier #2	316+21.69	12.00	677.61
I	316+31.69	12.00	677.60
J	316+41.69	12.00	677.60
H	316+51.69	12.00	677.59
CL Pier #3	316+62.69	12.00	677.57
L	316+72.69	12.00	677.55
M	316+82.69	12.00	677.53
N	316+92.69	12.00	677.51
O	317+02.69	12.00	677.49
CL Pier #4	317+16.44	12.00	677.45
P	317+26.44	12.00	677.41
Q	317+36.44	12.00	677.38
R	317+46.44	12.00	677.34
S	317+56.44	12.00	677.30
CL N. Abut.	317+70.19	12.00	677.24
Bk. Of N. Abut.	317+73.66	12.00	677.22

RIGHT EDGE OF SHOULDER

Location	Station	Offset Rt.	Theoretical Grade Elevations
Bk. Of S. Abut.	315+13.74	20.00	677.16
CL S. Abut.	315+17.21	20.00	677.19
A	315+27.21	20.00	677.27
B	315+37.21	20.00	677.30
C	315+47.21	20.00	677.32
D	315+57.21	20.00	677.34
CL Pier #1	315+65.04	20.00	677.35
E	315+75.04	20.00	677.36
F	315+85.04	20.00	677.37
G	315+95.04	20.00	677.38
H	316+05.04	20.00	677.38
CL Pier #2	316+16.29	20.00	677.38
I	316+26.29	20.00	677.38
J	316+36.29	20.00	677.37
H	316+46.29	20.00	677.37
CL Pier #3	316+57.29	20.00	677.35
L	316+67.29	20.00	677.34
M	316+77.29	20.00	677.32
N	316+87.29	20.00	677.30
O	316+97.29	20.00	677.27
CL Pier #4	317+11.04	20.00	677.24
P	317+21.04	20.00	677.21
Q	317+31.04	20.00	677.17
R	317+41.04	20.00	677.13
S	317+51.04	20.00	677.10
CL N. Abut.	317+64.79	20.00	677.04
Bk. Of N. Abut.	317+68.26	20.00	677.02

FILE: S:\PROJECTS\2818\1427018\DOT\DESIGN\CAD\_SHEETS\VD\_11\1427018\_Top of Slab Elevations.dgn



**WILLET HOFMANN**  
ASSOCIATES INC.  
INCORPORATED  
809 EAST 2ND STREET, CHICAGO, IL 60611-4367  
T 312-384-3881 DESIGN PRIN. 4184-000918

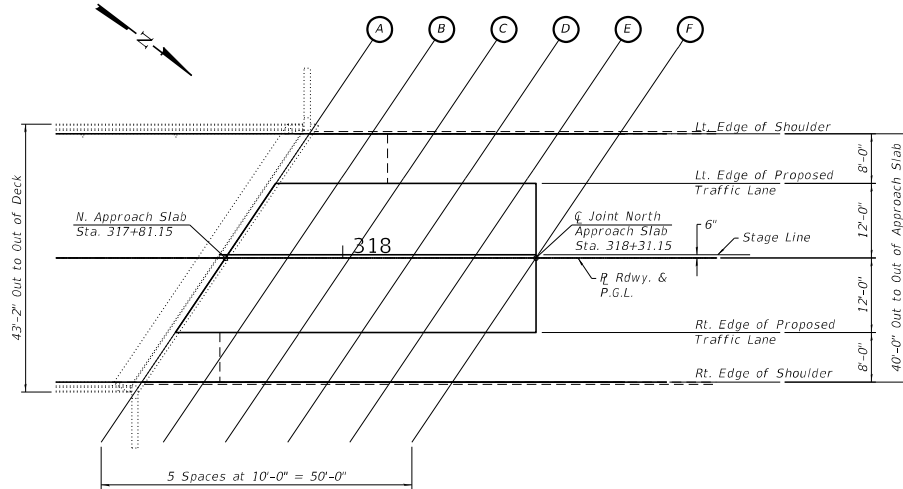
USER NAME	: tony	DESIGNED	: ESG	REVISED	:
DRAWN	: DAN	REVIEWED	:		
PLOT SCALE	: 2.0000' = 1"	CHECKED	: MRL	REVISED	:
PLOT DATE	: 5/19/2021	DATE	: 12/24/2020	REVISED	:

STATE OF ILLINOIS  
DEPARTMENT OF TRANSPORTATION

TOP OF SLAB ELEVATIONS  
STRUCTURE NO. 098-0099

STRUCTURAL SHEET 13 OF 26 SHEETS

F&P RTE.	SECTION	COUNTY	TOTAL SHEET SHEETS	SHEET NO.
309	(110V-BR)BDR	WHITESIDE	45	24
WH# 1427018		CONTRACT NO. 64P53		
ILLINOIS		FEI, 40 PROJECT		



PLAN VIEW

LEFT EDGE OF SHOULDER

Location	Station	Offset	Theoretical Grade Elevations
A	317+95.64	20.00	677.21
B	318+05.64	20.00	677.10
C	318+15.64	20.00	676.97
D	318+25.64	20.00	676.85
E	318+35.64	20.00	676.69
F	318+45.64	20.00	676.56

LEFT EDGE OF PROPOSED TRAFFIC LANE

Location	Station	Offset	Theoretical Grade Elevations
A	317+90.24	12.00	677.27
B	318+00.24	12.00	677.16
C	318+10.24	12.00	677.04
D	318+20.24	12.00	676.92
E	318+30.24	12.00	676.78
F	318+40.24	12.00	676.63

STAGE LINE

Location	Station	Offset	Theoretical Grade Elevations
A	317+82.49	0.50	677.35
B	317+92.49	0.50	677.24
C	318+02.49	0.50	677.14
D	318+12.49	0.50	677.01
E	318+22.49	0.50	676.89
F	318+32.49	0.50	676.74

CENTERLINE OF ROADWAY & P.G.L.

Location	Station	Offset	Theoretical Grade Elevations
A	317+82.15	0.00	677.35
B	317+92.15	0.00	677.25
C	318+02.15	0.00	677.14
D	318+12.15	0.00	677.02
E	318+22.15	0.00	676.89
F	318+32.15	0.00	676.75

RIGHT EDGE OF PROPOSED TRAFFIC LANE

Location	Station	Offset	Theoretical Grade Elevations
A	317+74.06	12.00	677.41
B	317+84.06	12.00	677.33
C	317+94.06	12.00	677.23
D	318+04.06	12.00	677.12
E	318+14.06	12.00	676.99
F	318+24.06	12.00	676.87

RIGHT EDGE OF SHOULDER

Location	Station	Offset	Theoretical Grade Elevations
A	317+68.66	20.00	677.43
B	317+78.66	20.00	677.38
C	317+88.66	20.00	677.28
D	317+98.66	20.00	677.18
E	318+08.66	20.00	677.06
F	318+18.66	20.00	676.94

FILE: S:\PROJECTS\2818\1427018\1427018\_1.DOT\DESIGN\DOT\_SHEETS\NO 11\427018\_Top of N. Approach Elevations.dgn



**WILLETT HOFMANN**  
ASSOCIATES, INC.  
INCORPORATED  
809 EAST 2ND STREET, CHICAGO, IL 60601-4367  
T: 815-284-3381 DESKON FRRN: 4184-0099P15

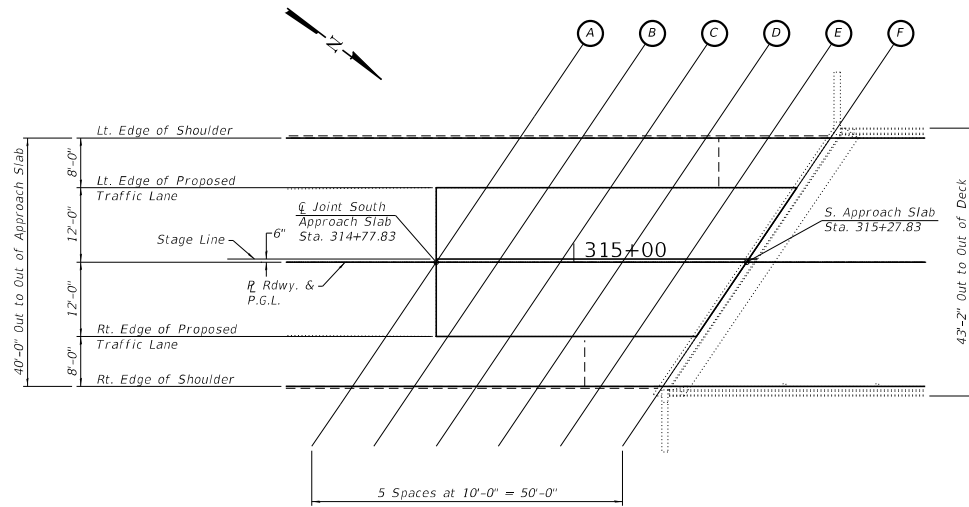
USER NAME	tony	DESIGNED	ESG	REVISION	-
		DRAWN	DAN	REVISION	-
		CHECKED	MRL	REVISION	-
PLOT SCALE	2.8000	DATE	12/24/2020	REVISION	-
PLOT DATE	5/19/2021				

STATE OF ILLINOIS  
DEPARTMENT OF TRANSPORTATION

TOP OF NORTH APPROACH SLAB ELEVATIONS  
STRUCTURE NO. 098-0099

STRUCTURAL SHEET 14 OF 26 SHEETS

F&P RTE.	SECTION	COUNTY	TOTAL SHEET SHEETS	SHEET NO.
309	(110V-BR)BDR	WHITESIDE	45	25
WHA# 1427018			CONTRACT NO. 64P53	
ILLINOIS			FED. AID PROJECT	



PLAN VIEW

LEFT EDGE OF SHOULDER

Location	Station	Offset	Theoretical Grade Elevations
A	314+91.32	20.00	677.04
B	315+01.32	20.00	677.12
C	315+11.32	20.00	677.20
D	315+21.32	20.00	677.28
E	315+31.32	20.00	677.35
F	315+41.32	20.00	677.37

LEFT EDGE OF PROPOSED TRAFFIC LANE

Location	Station	Offset	Theoretical Grade Elevations
A	314+85.92	12.00	677.16
B	314+95.92	12.00	677.24
C	315+05.92	12.00	677.32
D	315+15.92	12.00	677.40
E	315+25.92	12.00	677.48
F	315+35.92	12.00	677.53

STAGE LINE

Location	Station	Offset	Theoretical Grade Elevations
A	314+78.17	0.50	677.27
B	314+88.17	0.50	677.36
C	314+98.17	0.50	677.44
D	315+08.17	0.50	677.52
E	315+18.17	0.50	677.60
F	315+28.17	0.50	677.68

CENTERLINE OF ROADWAY & P.G.L.

Location	Station	Offset	Theoretical Grade Elevations
A	314+77.83	0.00	677.28
B	314+87.83	0.00	677.37
C	314+97.83	0.00	677.45
D	315+07.83	0.00	677.53
E	315+17.83	0.00	677.61
F	315+27.83	0.00	677.69

RIGHT EDGE OF PROPOSED TRAFFIC LANE

Location	Station	Offset	Theoretical Grade Elevations
A	314+69.74	12.00	677.32
B	314+79.74	12.00	677.11
C	314+89.74	12.00	677.19
D	314+99.74	12.00	677.27
E	315+09.74	12.00	677.35
F	315+19.74	12.00	677.43

RIGHT EDGE OF SHOULDER

Location	Station	Offset	Theoretical Grade Elevations
A	314+64.34	20.00	677.13
B	314+74.34	20.00	677.17
C	314+84.34	20.00	676.98
D	314+94.34	20.00	677.06
E	315+04.34	20.00	677.14
F	315+14.34	20.00	677.22

FILE - S:\PROJECTS\2818\1427018\1427018\_1.DOT\DESIGN\DOT\_SHEETS\NO 11\1427018\_Top of S. Approach Elevations.dgn



**WILLETT HOFMANN ASSOCIATES, INC.**  
 REGISTERED PROFESSIONAL ENGINEERS  
 809 EAST 2ND STREET, CHICAGO, IL 60601-4367  
 T 815-284-3381 DESIGN ROOM 4184-0009P15

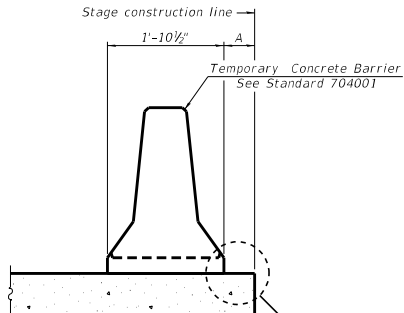
USER NAME	tony	DESIGNED	ESG	REVISED	-
		DRAWN	DAN	REVISED	-
PLOT SCALE	2:8000	CHECKED	MRL	REVISED	-
PLOT DATE	5/19/2021	DATE	12/24/2020	REVISED	-

STATE OF ILLINOIS  
 DEPARTMENT OF TRANSPORTATION

TOP OF SOUTH APPROACH SLAB ELEVATIONS  
 STRUCTURE NO. 098-0099

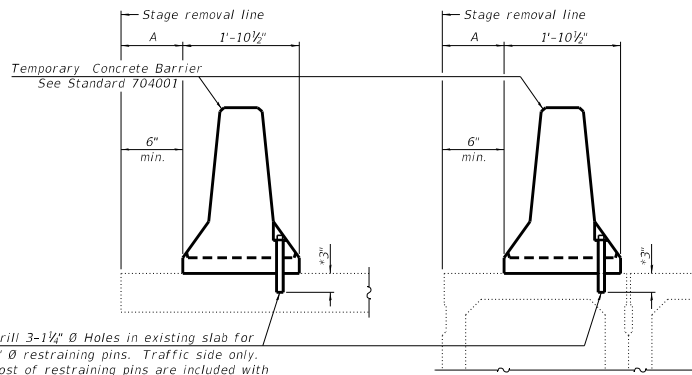
STRUCTURAL SHEET 15 OF 26 SHEETS

F&P RTS	SECTION	COUNTY	TOTAL SHEET SHEETS	NO.
309	(110)-BR/BD	WHITESIDE	45	26
WHAF 1427018			CONTRACT NO. 64P53	
ILLINOIS			FED. AID PROJECT	



When "A" is 3'-1" or less, the temporary concrete barrier shall be restrained to the new slab according to Detail I, II or III to Detail I, II or III. No restraint is required when "A" is greater than 3'-1".

NEW SLAB OR NEW DECK BEAM

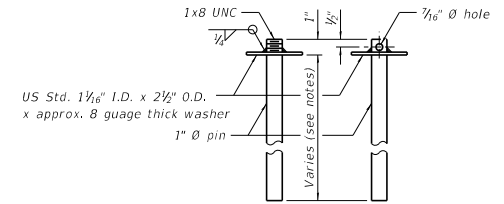


Drill 3-1/2" Ø Holes in existing slab for 1" Ø restraining pins. Traffic side only. Cost of restraining pins are included with Temporary Concrete Barrier. No restraint is required when "A" is greater than 3'-1".

EXISTING SLAB

EXISTING DECK BEAM

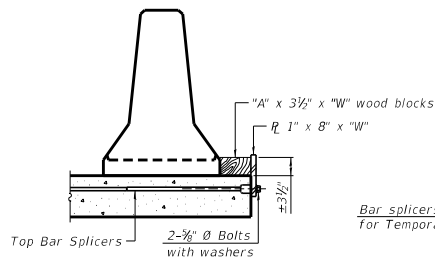
SECTIONS THRU SLAB OR DECK BEAM



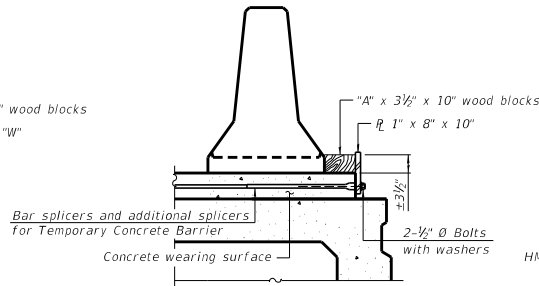
RESTRAINING PIN

US Std. 1 1/8" I.D. x 2 1/2" O.D. x approx. 8 gauge thick washer  
1" Ø pin  
Varies (see notes)

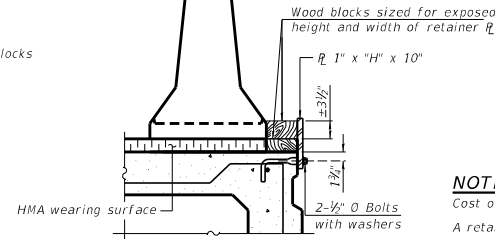
\* When hot-mix asphalt wearing surface is present, embedment shall be 3" plus the wearing surface depth.



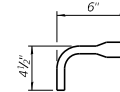
DETAIL I



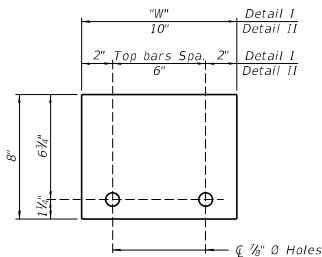
DETAIL II



DETAIL III

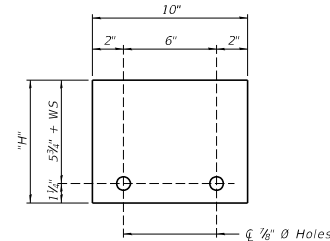


BAR SPLICER FOR #4 BAR - DETAIL III



STEEL RETAINER R 1" x 8" x "W"

(Detail I and II)



STEEL RETAINER R 1" x "H" x 10"

(Detail III)

NOTES:

Cost of retainer assembly is included with Temporary Concrete Barrier.

A retainer assembly shall be located at the approximate C of each temporary concrete barrier.

The retainer plate shall not be removed until the concrete on the adjacent stage is ready to be poured. For Detail III applications the retainer plate shall not be removed until just prior to placing the adjacent beam.

When the 'A' dimension is less than 1 1/2', the wood block shall be omitted and the barrier shall be placed in direct contact with the steel retainer plate. For deck beam applications the minimum required 'A' distance is 6" to accommodate the shear key clamping device.

Detail I - Installation for a new bridge deck or bridge slab.

Detail II - Installation for a new deck beam with an initial concrete wearing surface. Additional bar splicers shall be provided at 6'-0" centers and paired with the bar splicers of the concrete wearing surface reinforcement to accommodate the installation of the retainer assemblies. The cost of the additional bar splicers is included with the concrete wearing surface.

Detail III - Installation for a new deck beam with no initial wearing surface or with an initial hot-mix asphalt (HMA) wearing surface present. The deck beam directly beneath the temporary concrete barrier shall be fabricated with bar splicer inserts in the side of the beam, as detailed, to accommodate the installation of the retainer assemblies. A pair of bar splicers, 6" apart, shall be placed at 6'-0" centers along the length of the beam. The cost of the bar splicers is included with the deck beam.

FILE: S:\PROJECTS\2818\1427018.IDOT.DESIGN\CAD\_SHEETS\VD 11\427018.Temporary Concrete Barrier For Stage Construction.dgn



**WILLET HOFMANN**  
ASSOCIATES INC.  
INCORPORATED  
809 EAST 2ND STREET, CHICAGO, IL 60611-4367  
T: 815-284-3381 DESIGN: 4184-00091-F

USER NAME	tony	DESIGNED	ESG	REVISED	-
DRAWN	DAN	REVISOR	-	REVISOR	-
CHECKED	MRL	REVISOR	-	REVISOR	-
DATE	12/24/2020	REVISOR	-	REVISOR	-

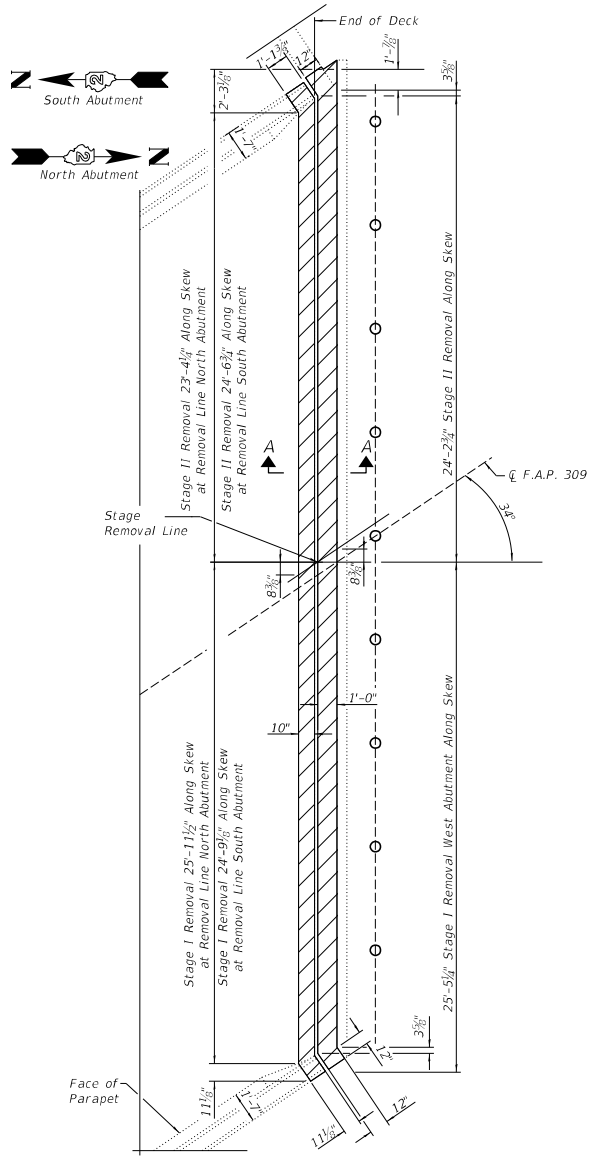
DESIGNED	ESG	REVISED	-
DRAWN	DAN	REVISOR	-
CHECKED	MRL	REVISOR	-
DATE	12/24/2020	REVISOR	-

STATE OF ILLINOIS  
DEPARTMENT OF TRANSPORTATION

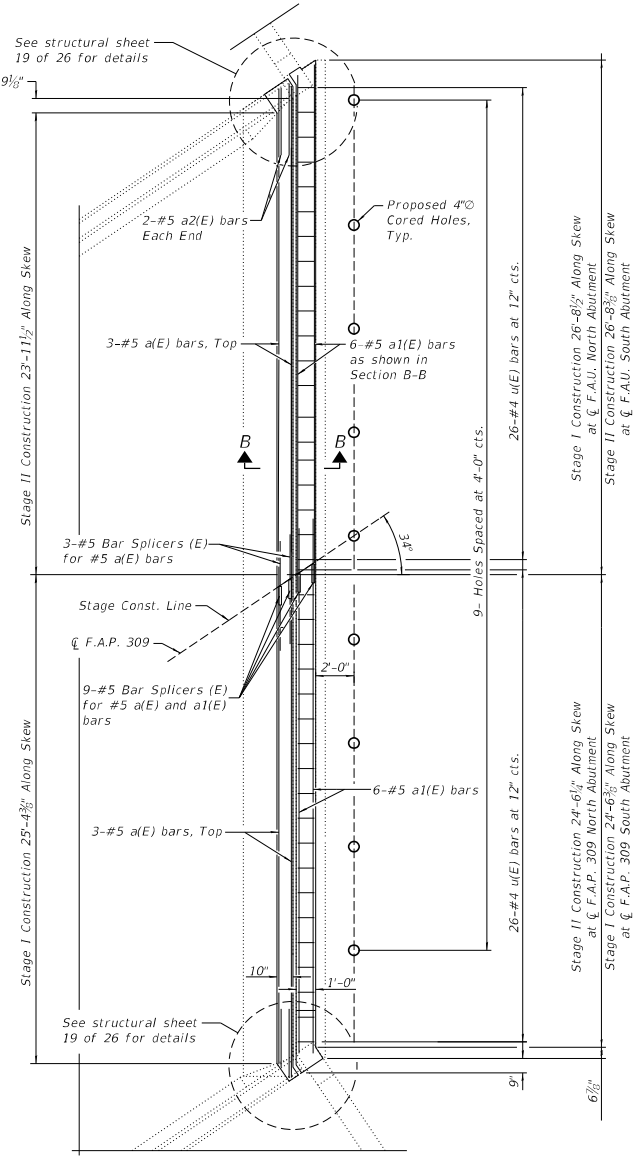
TEMPORARY CONCRETE BARRIER FOR STAGE CONSTRUCTION  
STRUCTURE NO. 098-0099

STRUCTURAL SHEET 16 OF 26 SHEETS

F.A.P. R.T.S.	SECTION	COUNTY	TOTAL SHEET
309	(110)-BR/BDR	WHITESIDE	45
	WH#P 1427018	CONTRACT NO.	64P53
	ILLNOIS	FED. AID PROJECT	



**REMOVAL PLAN**  
(N. Abutment Shown, S. Abutment Similar)



**REPLACEMENT PLAN**  
(N. Abutment Shown, S. Abutment Similar)

**LEGEND:**  
 Concrete Removal

**NOTES:**  
 Existing reinforcement bars extending into the removal area shall be cleaned, straightened and incorporated into the new construction. Any reinforcement bars that are damaged during Concrete Removal shall be replaced with approved bar splicer or anchorage system. Cost included with Concrete Removal.  
 See Structural Sheet 20 of 26 for Sections, Bill of Material and Reinforcement Bending Diagrams.  
 For Overlay details, see Cross Sections on Structural Sheets 3-11 of 26.  
 Cost of coring 4" Ø holes and aggregate along approach pavement included with Controlled Low-Strength Material.



USER NAME : epposton	DESIGNED : ESG	REVISED : -
DRAWN : DAN	REVISED : -	
CHECKED : MRL	REVISED : -	
DATE : 6/14/2021	DATE : 12/24/2020	REVISED : -

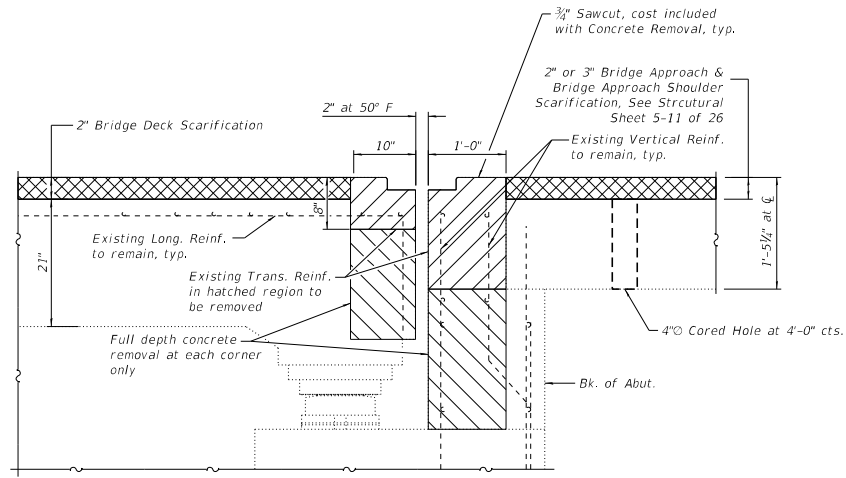
STATE OF ILLINOIS  
DEPARTMENT OF TRANSPORTATION

ABUTMENT JOINT REPLACEMENT DETAILS - 1 OF 2  
STRUCTURE NO. 098-0099

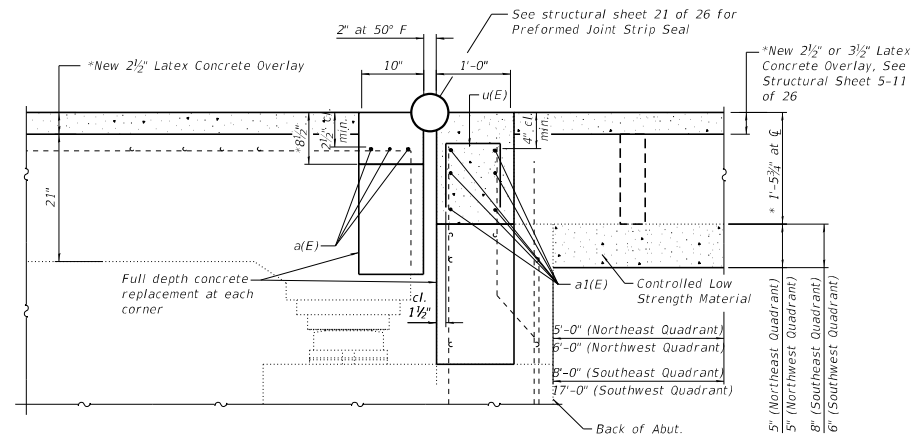
F.A.P. 309	SECTION (110V-BR/BDR)	COUNTY WHITESIDE	TOTAL SHEETS 45	SHEET NO. 28
WHAF 1427016			CONTRACT NO. 64P53	
ILLINOIS		FED. AID PROJECT		



FILE: S:\PROJECTS\2818\1427018\DOT\DESIGN\CAD\_SHEETS\VD 1\1427018\_Abument Joint Replacement\_Details\_2 of 2.dgn



SECTION A-A



SECTION B-B

\*Prior to Grinding.

LEGEND:

- Concrete Removal
- Concrete Removal, Full Depth (at corners under parapet)
- Bridge Deck, Approach Slab & Approach Shoulder Scarification

NOTES:

Existing reinforcement bars extending into the removal area shall be cleaned, straightened and incorporated into the new construction. Any reinforcement bars that are damaged during Concrete Removal shall be replaced with approved bar splicer or anchorage system. Cost included with Concrete Removal.

See Structural Sheet 20 of 26 for Sections, Bill of Material and Reinforcement Bending Diagrams.

For Overlay details, see Cross Sections on Structural Sheets 3-11 of 26.

Cost of coring 4"  $\emptyset$  holes and aggregate along approach pavement included with Controlled Low-Strength Material.



**WILLET HOFMANN**  
ASSOCIATES, INC.  
INCORPORATED  
809 EAST 2ND STREET, CHICAGO, IL 60611-4367  
T: 815-284-3381 DESIGN: 4184-0009P15

USER NAME	tony	DESIGNED	ESG	REVISED	-
		DRAWN	DAN	REVISED	-
PLOT SCALE	2.8000' / 1"	CHECKED	MRL	REVISED	-
PLOT DATE	5/19/2021	DATE	12/24/2020	REVISED	-

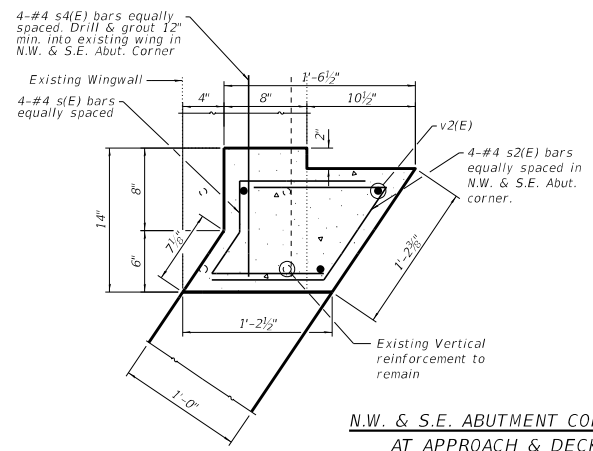
STATE OF ILLINOIS  
DEPARTMENT OF TRANSPORTATION

ABUTMENT JOINT REPLACEMENT DETAILS - 2 OF 2  
STRUCTURE NO. 098-0099

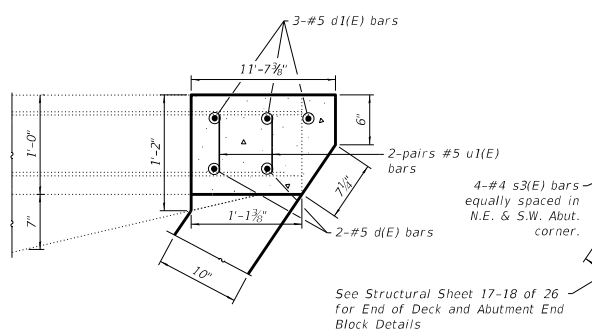
F.A.P. SITE	SECTION	COUNTY	TOTAL SHEET
309	(110V-BR)BDR	WHITESIDE	45
	WHAP# 1427018	CONTRACT NO.	64P53
	BLNCHS	FED. AID PROJECT	

STRUCTURAL SHEET 18 OF 26 SHEETS

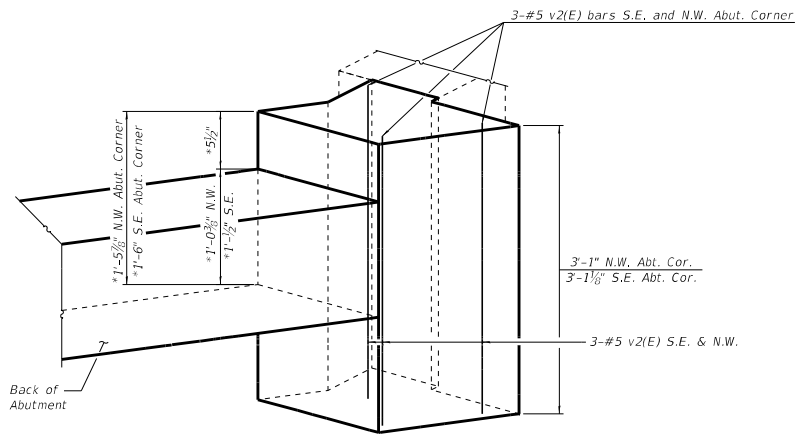
FILE: S:\PROJECTS\2818\1427018\DOT\DESIGN\CAD\_SHEETS\VD 11\427018\_Abument Corner Replacement Details.dwg



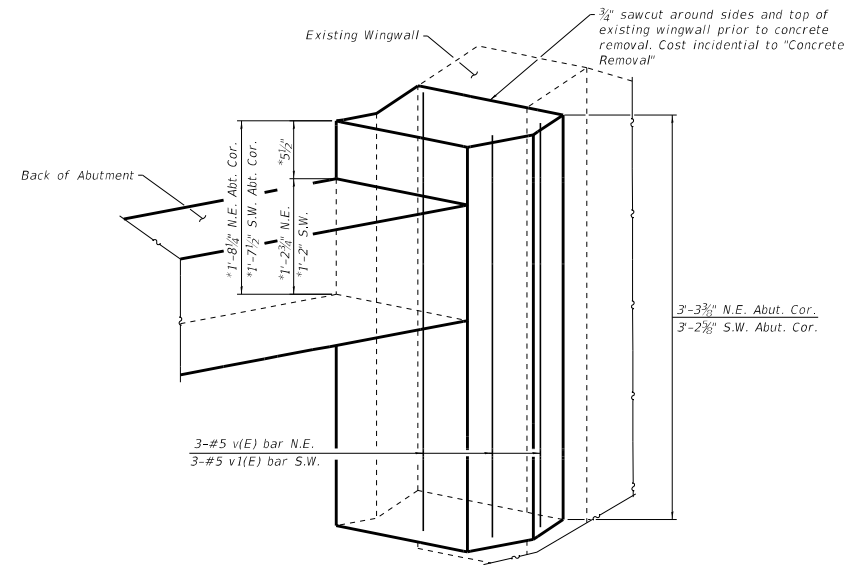
**N.W. & S.E. ABUTMENT CORNER PLAN VIEW  
AT APPROACH & DECK LOCATIONS**



**N.E. & S.W. ABUTMENT CORNER PLAN VIEW  
AT APPROACH & DECK LOCATIONS**



**N.W. & S.E. CORNER ELEVATION VIEW**



**N.E. & S.W. CORNER ELEVATION VIEW**

**NOTE:**  
See structural sheet 20 of 26 for Bar bending diagrams and Bill of Material



**WILLET HOFMANN**  
ASSOCIATES, INC.  
INCORPORATED  
809 EAST 245<sup>TH</sup> STREET, OAKTON, IL 61002-4367  
T 815-284-3381 FAX 815-284-0099

USER NAME	* tony	DESIGNED	- ESG	REVISED	-
DRAWN	- DAN	CHECKED	- MRL	REVISED	-
PLOT SCALE	* 8:1667' / 1"	DATE	- 12/24/2020	REVISED	-
PLOT DATE	* 5/19/2021				

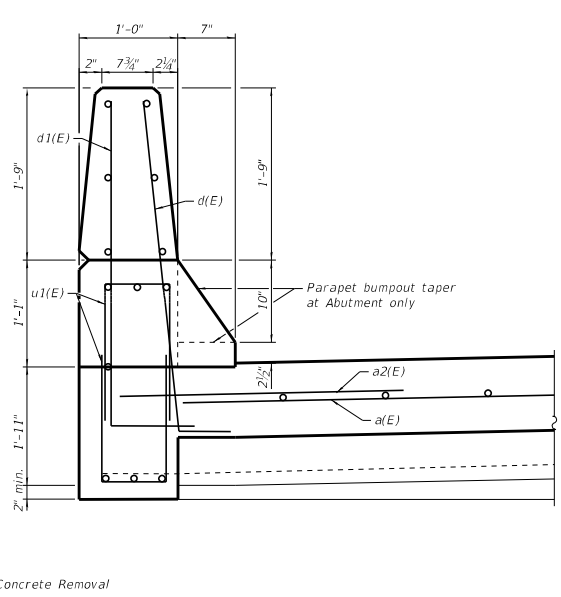
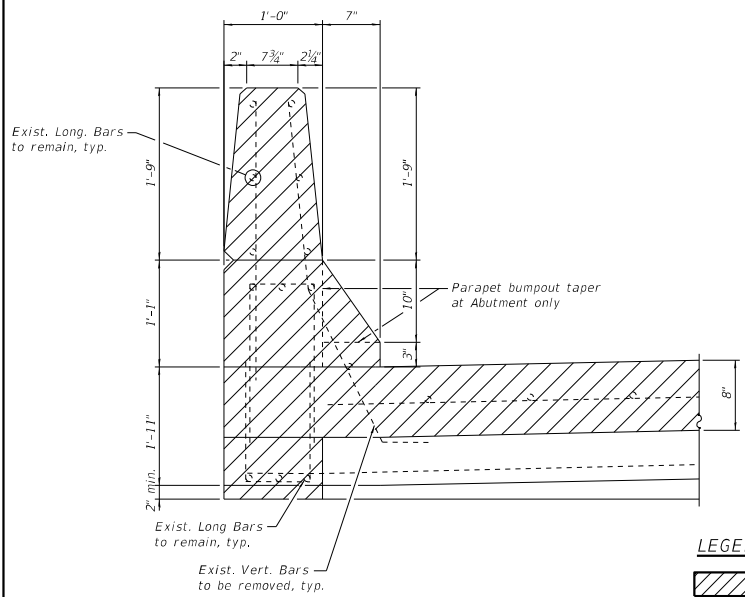
**STATE OF ILLINOIS  
DEPARTMENT OF TRANSPORTATION**

**ABUTMENT CORNER REPLACEMENT DETAILS  
STRUCTURE NO. 098-0099**

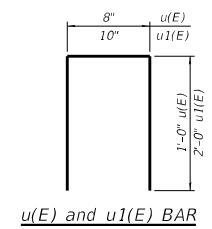
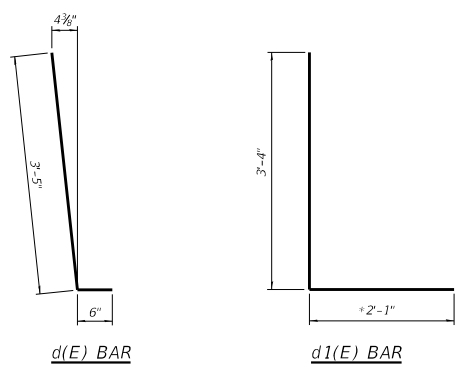
F.A.P. RITE	SECTION	COUNTY	TOTAL SHEET NO.
309	(110)-BR/BDR	WHITESIDE	45 30
WHAF 1427018		CONTRACT NO. 64P53	
ILLINOIS		FEED 40 PROJECT	

STRUCTURAL SHEET 19 OF 26 SHEETS

FILE: S:\PROJECTS\281B\1427018\1427018-1\DOT\DESIGN\CAD\_SHEETS\VD 11\427018-Joint Replacement & Repair - Detail.dgn



**LEGEND:**  
 Concrete Removal



**NOTE:**  
 Parapet in Sections shown with full cross section. Actual width will vary due to the curb taper when nearing abutment.

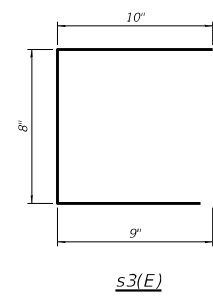
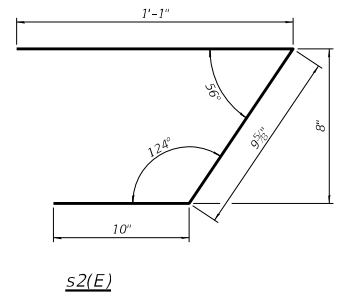
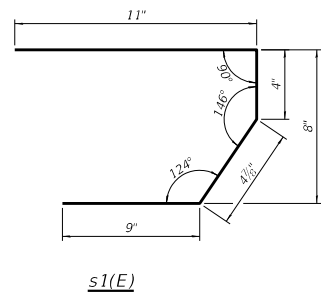
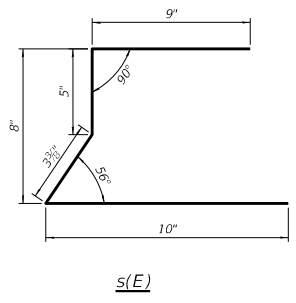
**SECTION C-C**  
 (Showing Removal)

**SECTION C-C**  
 (Showing Proposed Repair)

**BILL OF MATERIAL**

Bar	No.	Size	Length	Shape
a(E)	12	#5	24'-0"	—
a1(E)	18	#5	25'-7"	—
a2(E)	8	#5	4'-3"	—
d(E)	8	#5	3'-11"	L
d1(E)	8	#5	5'-5"	L
s(E)	8	#4	2'-4"	U
s1(E)	8	#4	2'-5"	U
s2(E)	8	#4	2'-9"	U
s3(E)	8	#4	2'-4"	U
s4(E)	8	#4	2'-0"	U
u(E)	104	#5	2'-8"	U
u1(E)	12	#5	4'-10"	U
v(E)	3	#5	2'-11"	—
v1(E)	3	#5	2'-10"	—
v2(E)	6	#5	2'-9"	—
Concrete Removal		Cu. Yd.	9.5	
Concrete Superstructure		Cu. Yd.	9.7	
Reinforcement Bars, Epoxy Coated		Pound	1,350	
Bar Splicers		Each	18	
Controlled Low-Strength Material		Cu. Yd.	8.5	

**NOTES:**  
 See Structural Sheet 22 of 26 for Bar Splicers

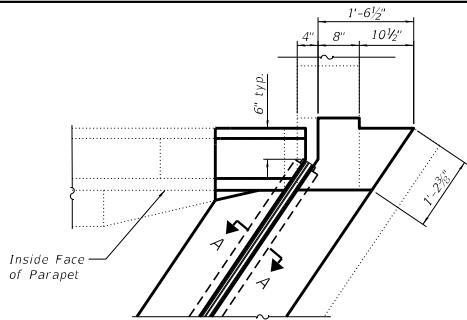


USER NAME	• tony	DESIGNED	• ESG	REVISED	•
DRAWN	• DAN	CHECKED	• MRL	REVISED	•
DATE	• 12/24/2020	DATE	• 5/19/2021	REVISED	•

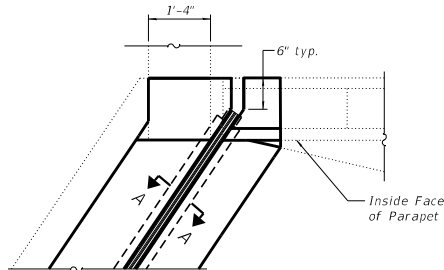
STATE OF ILLINOIS  
 DEPARTMENT OF TRANSPORTATION

JOINT REPLACEMENT AND REPAIR DETAIL  
 STRUCTURE NO. 098-0099  
 STRUCTURAL SHEET 20 OF 26 SHEETS

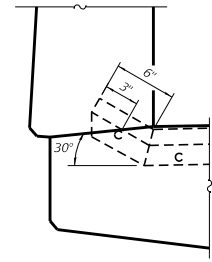
F.A.P. NO.	SECTION	COUNTY	TOTAL SHEETS	SHEET NO.
309	(110)-BR/BDR	WHITESIDE	45	31
WHAF 1427018			CONTRACT NO. 64P53	
ILLNOIS		FEU, 40 PROJECT		



**PLAN AT PARAPET**  
(N.W. Corner of N. Abutment shown  
S.E. Corner of S. Abutment Similar)

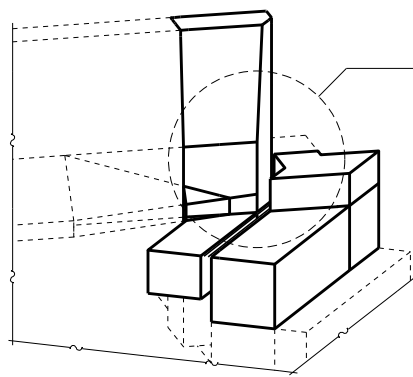


**PLAN AT PARAPET**  
(N.E. Corner of N. Abutment shown  
S.W. Corner of S. Abutment Similar)

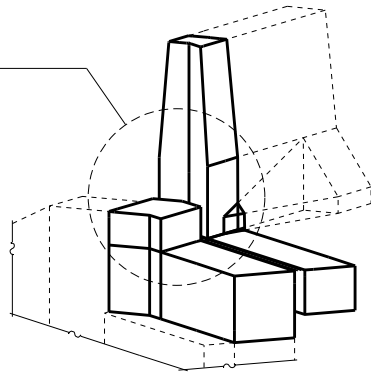


**DETAIL A**

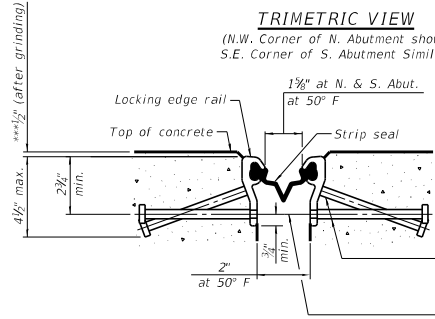
**Notes:**  
The strip seal shall be made continuous and shall have a minimum thickness of 1/2". The configuration of the strip seal shall match the configuration of the locking edge rails. Open or "webbed" strip seal gland configurations are not permitted. The gland shall be sized for a maximum rated movement of 4 inches.  
The locking edge rails depicted are configured for typical applications and are conceptual only. The actual configuration of the locking edge rails and matching strip seal may vary from manufacturer to manufacturer provided they fit the application and meet the minimum anchorage shown. Flanged edge rails, however, will not be allowed. Locking edge rails may exceed the 4 1/2" maximum depth provided the anchorage system is revised according to the manufacturer's recommendation.  
The manufacturer's recommended installation methods shall be followed.  
All steel components shall be galvanized after fabrication according to Article 520.03 of the Standard Specifications.  
The Maximum space between locking edge rail segments shall be 3/8" and sealed with a suitable sealant; however, any rail joint within 10' measured perpendicular to the face of the curb or parapet shall be welded as shown in the locking edge rail splice detail.  
Cost of parapet sliding plates, embedded plates, and anchorage studs included with Preformed Joint Strip Seal.  
39° constant slope barrier shown, 44° constant slope barrier similar as noted.  
The concrete opening below the strip seal will vary based on the locking edge rail chosen by the Contractor. Deck and parapet lengths shown elsewhere in the plans are dimensioned to the concrete opening, not the joint opening, and are based on the rolled locking edge rail. If the Contractor elects to use a different locking edge rail, dimensional adjustments may be required. One exception to this would be the strip seal joint at the end of the precast bridge approach slab. For these cases the pavement connector length shall be adjusted, not the length of the bridge approach slab.



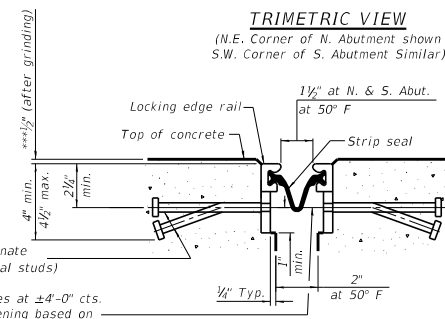
**TRIMETRIC VIEW**  
(N.W. Corner of N. Abutment shown  
S.E. Corner of S. Abutment Similar)



**TRIMETRIC VIEW**  
(N.E. Corner of N. Abutment shown  
S.W. Corner of S. Abutment Similar)



**SHOWING ROLLED RAIL JOINT**

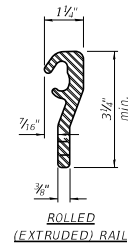


**SHOWING WELDED RAIL JOINT**  
\*\*\*Prior to Grinding

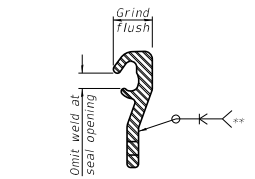
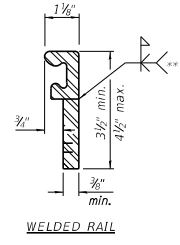
\*\*\* 3/8" Ø x 6" studs @ 6" cts. (alternate angled/bent studs with horizontal studs)  
3/8" Ø threaded rods in 7/16" Ø holes at ±4-0" cts. for holding the proper joint opening based on the temperature during the deck pour. Place to miss studs. All rods shall be burned, or sawed off flush with the plates after concrete is set.

**SECTION A-A**

\*\*\* Granular or solid flux filled headed studs conforming to Article 1006.32 of the Std. Specs., automatically end welded.



**LOCKING EDGE RAILS**  
\*\* Back gouge not required if complete joint penetration is verified by mock-up.



**LOCKING EDGE RAIL SPLICE**  
The inside of the locking edge rail groove shall be free of weld residue.  
Rolled rail shown, welded rail similar.

**BILL OF MATERIAL**

Item	Unit	Total
Preformed Joint Strip Seal	Foot	104

FILE: S:\PROJECTS\2818\1427018\1DOT\DESIGN\ADD\_SHEETS\MOD\_11\1427018-Modified-Preformed-Joint-Strip-Seal-Detail.dgn

**WILLET HOFMANN ASSOCIATES INC.**  
INCORPORATED  
809 EAST 2ND STREET, CHICAGO, IL 60611-4367  
T: 815-284-3381 DESKON FIRM: 4184-0099P18

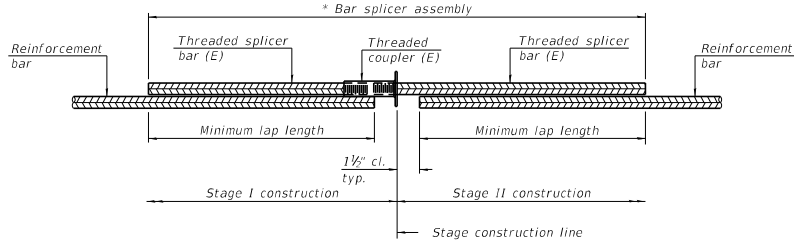
USER NAME	ESG	DESIGNED	DAN	REVISION	
PLOT SCALE	1" = 8'-0"	CHECKED	MRL	REVISION	
PLOT DATE	5/19/2021	DATE	12/24/2020	REVISION	

**STATE OF ILLINOIS DEPARTMENT OF TRANSPORTATION**

**MODIFIED PREFORMED JOINT STRIP SEAL STRUCTURE NO. 098-0099**

F.A.P. NO.	SECTION	COUNTY	TOTAL SHEETS
309	(110)-BR/BR	WHITESIDE	45
WH#P 1427018		CONTRACT NO. 64P53	
ILLINOIS		FEEDBACK PROJECT	

STRUCTURAL SHEET 21 OF 26 SHEETS



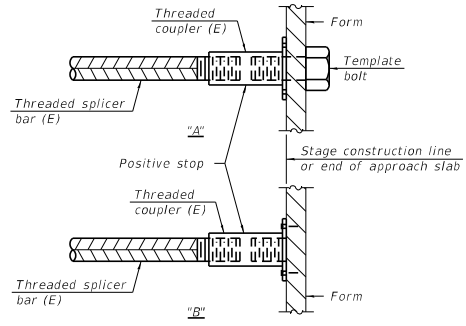
**STANDARD BAR SPLICER ASSEMBLY PLAN**  
(All components shall be provided from one supplier)

Threaded splicer bar length = min. lap length + 1 1/2" + thread length

\* Epoxy not required on Bar Splicer Assembly components used in conjunction with black bars.

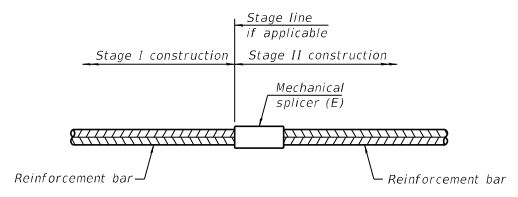
**Location	Bar size	No. assemblies required	Minimum lap length
N. Abutment	#5	9	3'-6"
S. Abutment	#5	9	3'-6"

\*\* Per Structure



**INSTALLATION AND SETTING METHODS**

"A" : Set bar splicer assembly by means of a template bolt.  
 "B" : Set bar splicer assembly by nailing to wood forms or cementing to steel forms.  
 (E) : Indicates epoxy coating.



**STANDARD MECHANICAL SPLICER**

Location	Bar size	No. assemblies required

Notes:  
 Splicer bars shall be deformed with threaded ends and have a minimum 60 ksi yield strength.  
 All reinforcement shall be lapped and tied to the splicer bars.  
 Bar splicer assemblies shall be epoxy coated according to the requirements for reinforcement bars. See Section 508 of the Standard Specifications.  
 See approved list of bar splicer assemblies and mechanical splicers for alternatives.

FILE : S:\PROJECTS\281B\1427018\DOT\DESIGN\CAD\_SHEETS\01\1427018.Bar Splicer Assembly and Mechanical Splicer Details.dgn

**WILLET HOFMANN ASSOCIATES INC.**  
 INCORPORATED JACO PECULIER ARCHITECTS  
 809 EAST 2ND STREET, CHICAGO, IL 60601-4367  
 T: 815-284-3381 DESIGNS FROM: 4784-0099P15

USER NAME : tony	DESIGNED : ESG	REVISED :
DRAWN : DAN	RECHECKED : MRL	REVISIONS :
PLOT SCALE : 8/1667" = 1"	CHECKED : MRL	DATE : 12/24/2020
PLOT DATE : 5/19/2021	DATE : 12/24/2020	REVISED :

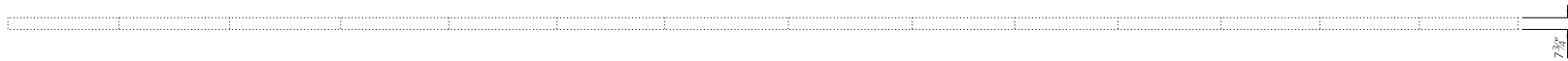
**STATE OF ILLINOIS DEPARTMENT OF TRANSPORTATION**

**BAR SPLICER ASSEMBLY AND MECHANICAL SPLICER DETAILS**  
**STRUCTURE NO. 098-0099**

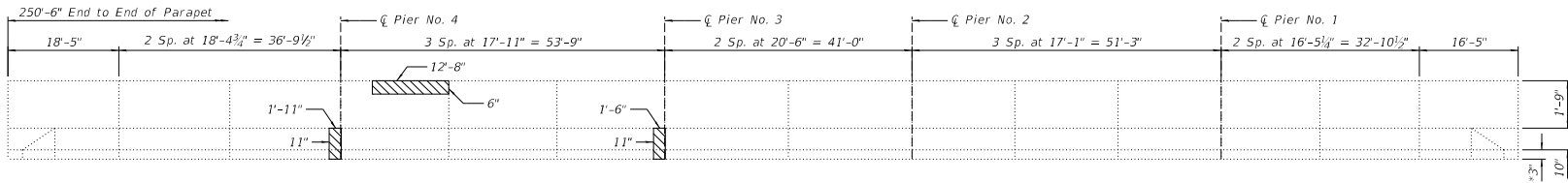
F.A.P. RITE:	SECTION	COUNTY	TOTAL SHEET NO.
309	(110)-BR/BDR	WHITESIDE	45 33
WHAF 1427018		CONTRACT NO. 64P53	
ILLINOIS		FED. AID PROJECT	



**BACK FACE**  
(See Traffic Face for joint location dimensions)



**TOP**  
(See Traffic Face for joint location dimensions)



**TRAFFIC FACE**

\*Prior to Deck Scarification & Latex Concrete Overlay

**EAST PARAPET REPAIRS**

**LEGEND**

Structural Repair of Concrete (Depth ≤ 5")

**NOTE:**  
See Structural Sheet 24 of 26 for Bill of Material.  
See Structural Sheet 11 of 26 for Acrylic Coat Limits.  
All Concrete Removal Regions shall have a 1/2" sawcut around perimeter prior to Concrete Removal operations. Cost included in Structural Repair of Concrete (Depth Equal to or Less Than 5").

FILE: S:\PROJECTS\2818\1427018.IDOT\DESIGN\CAD\_SHEETS\VD 1\1427018\_Parapet Repair\_Detail.dwg



**WILLETT HOFMANN ASSOCIATES, INC.**  
INCORPORATED  
809 EAST 2ND STREET, CHICAGO, IL 60611-4367  
T: 815-284-3381 DESIGN: 4184-0009P-15

USER NAME	: tonyj	DESIGNED	: ESG	REVISED	: -
DRAWN	: DAN	CHECKED	: MRL	REVISED	: -
PLOT SCALE	: 2.0000' / 1"	DATE	: 12/24/2020	REVISED	: -
PLOT DATE	: 5/19/2021				

**STATE OF ILLINOIS  
DEPARTMENT OF TRANSPORTATION**

**EAST PARAPET REPAIR DETAILS  
STRUCTURE NO. 098-0099**

STRUCTURAL SHEET 23 OF 26 SHEETS

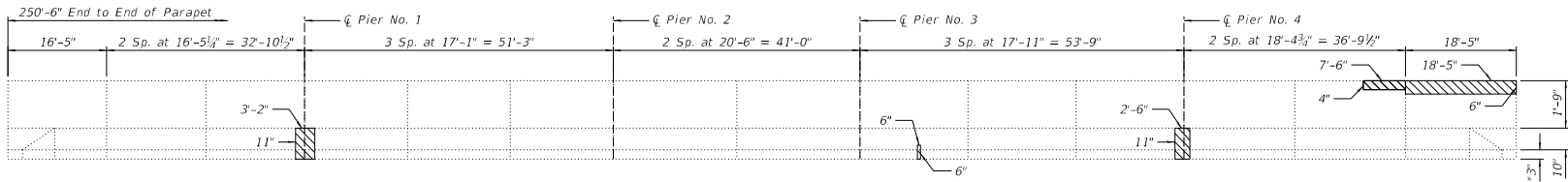
F.A.P. SITE	SECTION	COUNTY	TOTAL SHEETS	SHEET NO.
309	(110)-BR/BDP	WHITESIDE	45	34
WHAP 1427018		CONTRACT NO. 64P53		
ILLNOIS		FED. AID PROJECT		



**BACK FACE**  
(See Traffic Face for joint location dimensions)



**TOP**  
(See Traffic Face for joint location dimensions)



**TRAFFIC FACE**

\*Prior to Deck Scarification & Latex Concrete Overlay

**WEST PARAPET REPAIRS**

**BILL OF MATERIAL**

Item	Unit	Quantity
Structural Repair of Concrete (Depth $\leq 5'$ )	Sq. Ft.	27
Acrylic Coating	Sq. Yd.	360

**LEGEND**

Structural Repair of Concrete (Depth  $\leq 5'$ )

**NOTE:**

See Structural Sheet 11 of 26 for Acrylic Coat Limits.  
All Concrete Removal Regions shall have a  $\frac{3}{4}$ " sawcut around perimeter prior to Concrete Removal operations. Cost included in Structural Repair of Concrete (Depth Equal to or Less Than 5').

FILE - S:\PROJECTS\2818\1427018.IDOT.DESIGN\CAD\_SHEETS\WD 11\1427018\_Parapet Repair\_Detail.dwg



USER NAME - tony	DESIGNED - ESG	REVISED -
	DRAWN - DAN	REVISED -
PLOT SCALE - 2.0000' / 1"	CHECKED - MRL	REVISED -
PLOT DATE - 5/19/2021	DATE - 12/24/2020	REVISED -

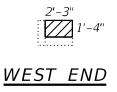
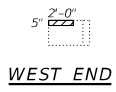
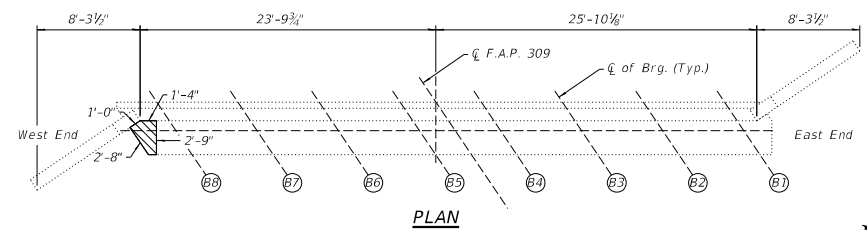
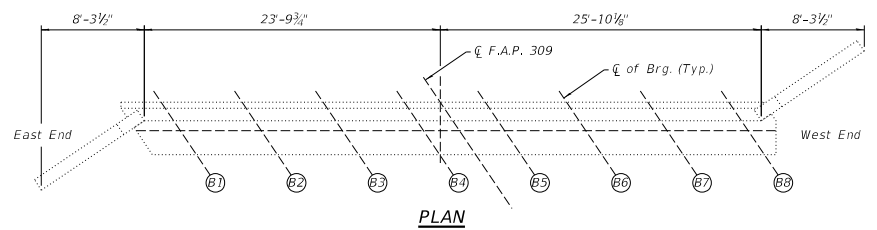
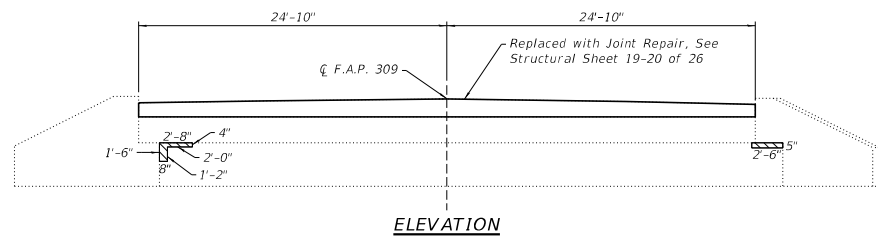
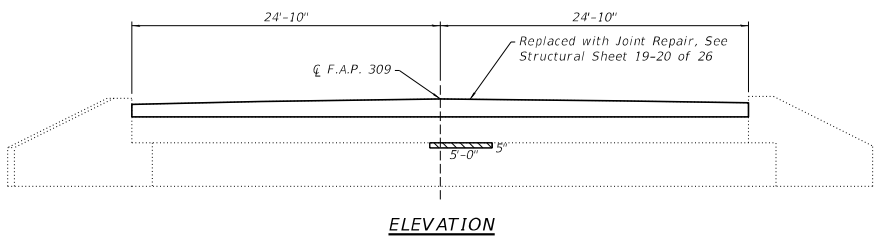
STATE OF ILLINOIS  
DEPARTMENT OF TRANSPORTATION

WEST PARAPET REPAIR DETAILS  
STRUCTURE NO. 098-0099

STRUCTURAL SHEET 24 OF 26 SHEETS

F.A.P. RITE	SECTION	COUNTY	TOTAL SHEET NO.
309	(110)-BR/DR	WHITESIDE	45 35
	WH#P 1427018		CONTRACT NO. 64P53
	ILLNOIS		FED. AID PROJECT

FILE: S:\PROJECTS\2818\1427018\DOT\DESIGN\CD\ SHEETS\10\1427018\_North and South Abutment Repair - Details.dwg



**SOUTH ABUTMENT**  
(Looking South)

**NORTH ABUTMENT**  
(Looking North)

**LEGEND**

Structural Repair of Concrete  
(Depth equal to or less than 5 inches)

**BILL OF MATERIAL**

Item	Unit	Quantity
Structural Repair of Concrete (Depth equal to or less than 5 inches)	Sq. Yd.	13



USER NAME: tony	DESIGNED: ESG	REVISIONS:
DRAWN: DAN	CHECKED: MRL	DATE: 12/24/2020
PLOT SCALE: 2.8800' / 1"	PLOT DATE: 5/19/2021	

STATE OF ILLINOIS  
DEPARTMENT OF TRANSPORTATION

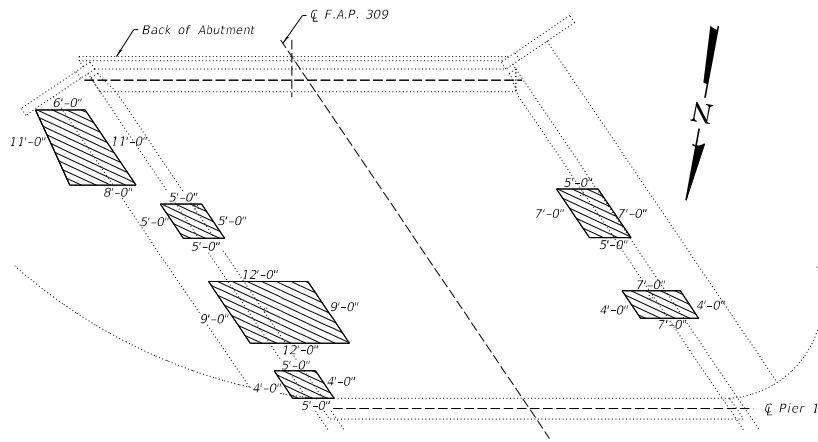
NORTH AND SOUTH ABUTMENT REPAIR DETAILS  
STRUCTURE NO. 098-0099

F.A.P. RITE: 309	SECTION: (110)-BR/BDR	COUNTY: WHITESIDE	TOTAL SHEET NO.: 45	SHEET NO.: 38
WHAF 1427018			CONTRACT NO. 64P53	
ILLNOIS			FED. AID PROJECT	

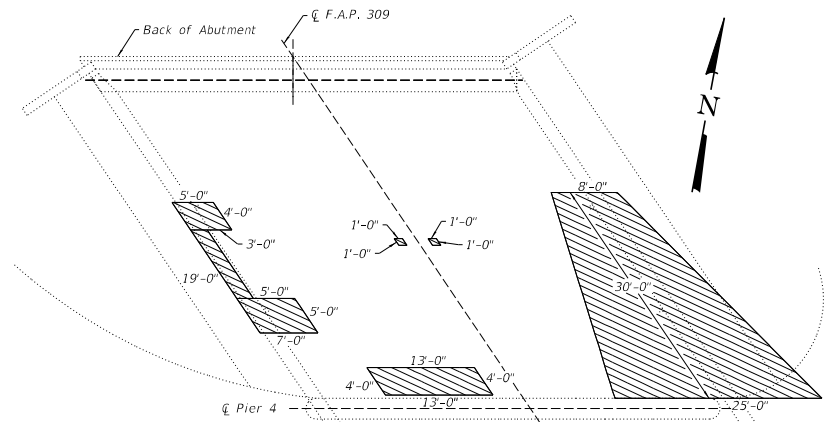
STRUCTURAL SHEET 25 OF 26 SHEETS



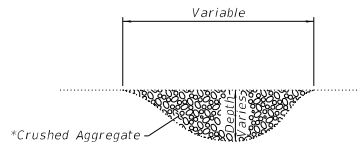
FILE - S:\PROJECTS\2818\1427018\DOT\DESIGN\CD\ SHEETS\VD 1\1427018.B\lumines Slopenwall Repairs.dgn



**SOUTH ABUTMENT**  
(Looking South)



**NORTH ABUTMENT**  
(Looking North)



**SECTION A-A**

\* See Special Provisions For gradation requirements.

**BILL OF MATERIAL**

Item	Unit	Quantity
Bituminous Coated Aggregate Slopenwall, 6"	Ton	79

**NOTES:**

Crushed aggregate for slopenwall repair shall be placed in 6" lifts and mechanically compacted to the satisfaction of the Engineer.

Washout shall be cleared of vegetation and debris prior to placing crushed aggregate.



USER NAME	* tony	DESIGNED	- ESG	REVISED	-
DRAWN	- DAN	CHECKED	- MRL	REVISED	-
PLOT SCALE	* 2.8800' / 1"	DATE	- 12/24/2020	REVISED	-
PLOT DATE	* 5/19/2021				

STATE OF ILLINOIS  
DEPARTMENT OF TRANSPORTATION

SLOPE WALL REPAIRS  
STRUCTURE NO. 098-0099

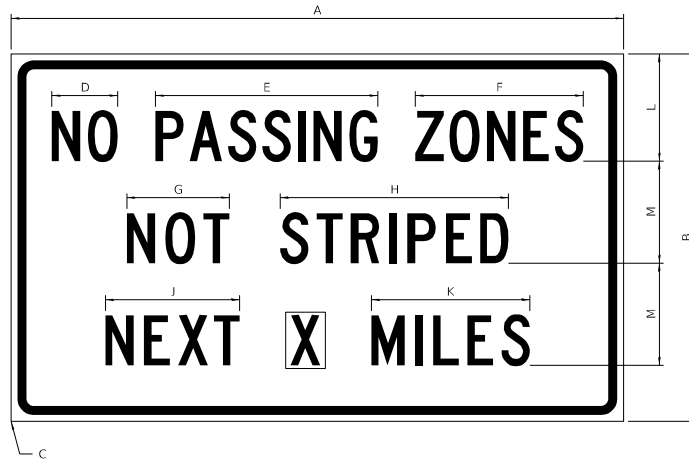
STRUCTURAL SHEET 26 OF 26 SHEETS

F.A.P. RTE.	SECTION	COUNTY	TOTAL SHEETS	SHEET NO.
309	(110)-BR/BD	WHITESIDE	45	37
WHAP# 1427018			CONTRACT NO. 64P53	
ILLINOIS		FED. AID PROJECT		



# WORK ZONE SIGN DETAILS

**ILLINOIS STANDARD G20-I100**



COLOR    LEGEND AND BORDER BACKGROUND    BLACK ORANGE    NON-REFLECTORIZED REFLECTORIZED

SIGN SIZE	DIMENSIONS											
	A	B	C	D	E	F	G	H	J	K	L	M
60 x 36	60.00	36.00	2.25	6.4	21.80	16.40	10.00	22.40	13.20	15.50	10.50	10.00

SIGN SIZE	SERIES BY LINE			MARGIN	BORDER
	1	2	3		
60 x 36	5C	5C	5C	0.625	0.875

Sign not to scale

**GENERAL NOTES**

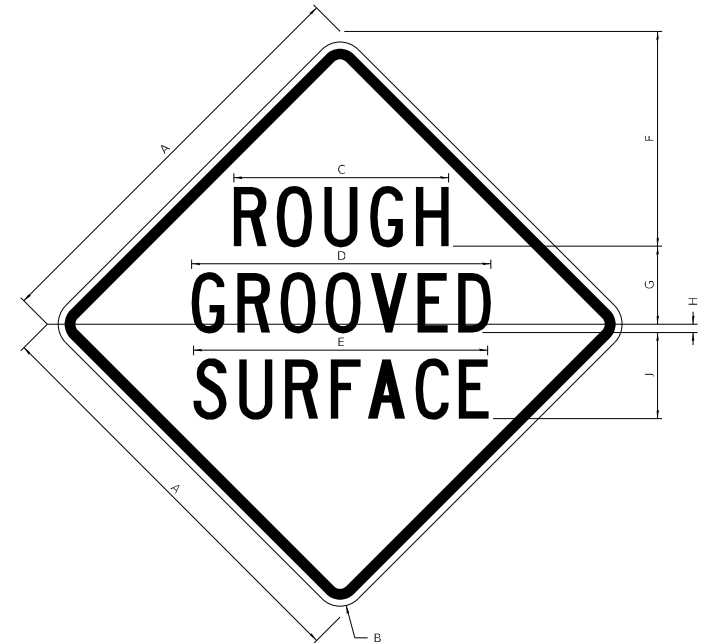
All work to furnish and install these signs shall be included in the cost of the specified traffic control standards and shall not be paid separately.

All Illinois Standard signs shall conform to the latest edition of the "Illinois Standard Highway Signs Book" in effect on the date of invitation for bids.

Signs shall meet the applicable portions of Sections 701 and 720 of the Standard Specifications.

All dimensions are in inches unless otherwise noted.

**ILLINOIS STANDARD W8-I107**



COLOR    LEGEND AND BORDER BACKGROUND    BLACK ORANGE    NON-REFLECTORIZED REFLECTORIZED

SIGN SIZE	DIMENSIONS								
	A	B	C	D	E	F	G	H	J
48 x 48	48.00	3.00	25.00	34.80	34.20	24.94	9.00	1.00	10.00

SIGN SIZE	SERIES BY LINE			MARGIN	BORDER
	1	2	3		
48 x 48	7C	7C	7C	1.250	0.750

Sign not to scale

USER NAME = nsp	DESIGNED -	REVISED - 3-02-16
	DRAWN -	REVISED -
PLOT SCALE = 20.0000 * 1/8"	CHECKED -	REVISED -
PLOT DATE = 5/19/2021	DATE -	REVISED -

**STATE OF ILLINOIS  
DEPARTMENT OF TRANSPORTATION**

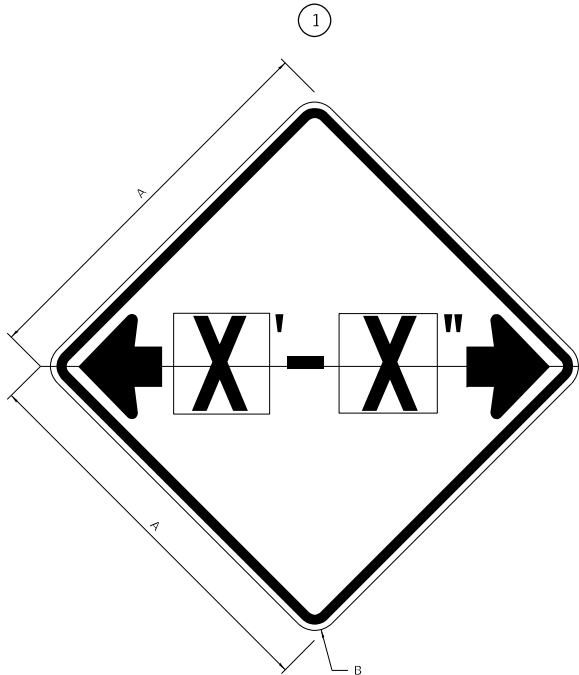
**REGION 2 / DISTRICT 2 STANDARD**

F.A.P. SITE = 309	SECTION = (110V-BR)BDR	COUNTY = WHITESIDE	TOTAL SHEETS = 45	SHEET NO. = 39
CONTRACT NO. 64P53			ILLINOIS FED. AID PROJECT	

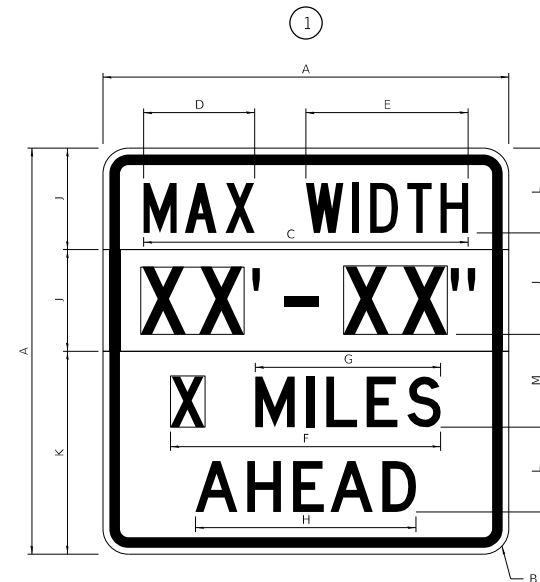
SCALE: SHEET 1 OF 4 SHEETS STA. TO STA.

# WORK ZONE SIGN DETAILS

**ILLINOIS STANDARD W12-I102**



**ILLINOIS STANDARD W12-I103**



**GENERAL NOTES**

All work to furnish and install these signs shall be included in the cost of the specified traffic control standards and shall not be paid separately.

All Illinois Standard signs shall conform to the latest edition of the "Illinois Standard Highway Signs Book" in effect on the date of invitation for bids.

Signs shall meet the applicable portions of Sections 701 and 720 of the Standard Specifications.

All dimensions are in inches unless otherwise noted.

COLOR LEGEND AND BORDER BACKGROUND BLACK FL ORANGE NON-REFLECTORIZED REFLECTORIZED

SIGN SIZE	DIMENSIONS	
	A	B
48 x 48	48.00	3.00

① Illinois Standard signs W12-I102 and W12-I103 shall be used as described in the special provisions.

SIGN SIZE	SERIES BY LINE	MARGIN	BORDER
	1		
48 x 48	12C	0.750	1.250

Sign not to scale

COLOR LEGEND AND BORDER BACKGROUND (WIDTH) BLACK WHITE FL ORANGE NON-REFLECTORIZED REFLECTORIZED

SIGN SIZE	DIMENSIONS											
	A	B	C	D	E	F	G	H	J	K	L	M
48 x 48	48,00	3,00	38,40	13,20	19,20	32,00	22,00	26,20	12,00	24,00	10,00	11,00

SIGN SIZE	SERIES BY LINE				MARGIN	BORDER
	1	2	3	4		
48 x 48	6C	8D	6D	6D	0.750	1.250

Sign not to scale

XX'-XX" WIDTH AND X MILES ARE VARIABLE TOP AND BOTTOM OF BACKGROUND WHITE

USER NAME = nsp	DESIGNED -	REVISED - 3-02-16
	DRAWN -	REVISED -
PLOT SCALE = 20,0000 * 1/4"	CHECKED -	REVISED -
PLOT DATE = 5/19/2021	DATE -	REVISED -

**STATE OF ILLINOIS  
DEPARTMENT OF TRANSPORTATION**

**REGION 2 / DISTRICT 2 STANDARD**

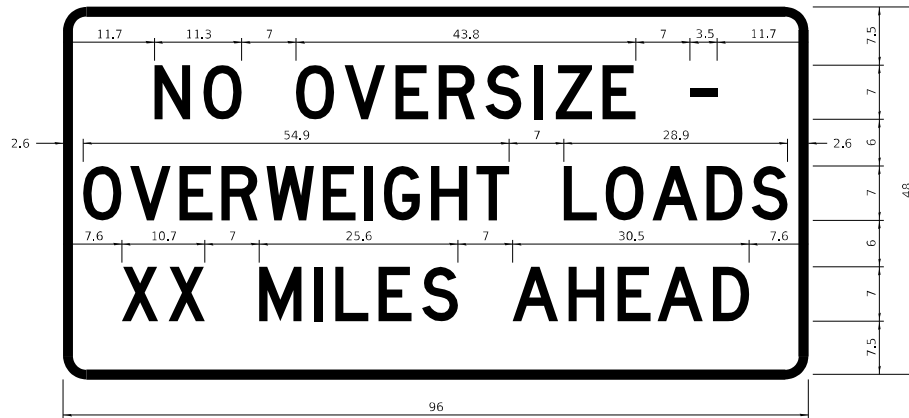
F.A.P. SITE	SECTION	COUNTY	TOTAL SHEETS	SHEET NO.
309	(110V-BR)BDR	WHITESIDE	45	40
CONTRACT NO. 64P53				

SCALE: SHEET 2 OF 4 SHEETS STA. TO STA.

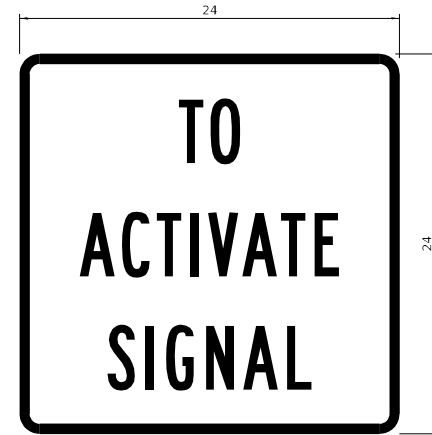
ILLINOIS FED. AID PROJECT

# WORK ZONE SIGN DETAILS

## ROAD CLOSED TO OVERSIZED LOADS



## STOP LINE SIGN FOR TEMPORARY SIGNALS



COLOR	LEGEND AND BORDER BACKGROUND	BLACK ORANGE	NON-REFLECTORIZED REFLECTORIZED
-------	------------------------------	--------------	---------------------------------

Permit Loads - Loads Over 13 Feet; 3.0" Radius, 1.3" Border;  
 [NO OVERSIZE -] D; [OVERWEIGHT LOADS] D 85% spacing; [XX MILES AHEAD] D;  
 Table of letter and object lefts.

N	O	O	V	E	R	S	I	Z	E	-
11.7	18.1	30.0	36.2	42.8	48.4	54.4	60.7	63.5	69.5	80.8

O	V	E	R	W	E	I	G	H	T	L	O	A	D	S
2.6	8.6	15.0	20.4	26.2	33.4	38.8	41.3	47.4	53.2	64.5	69.9	75.9	82.9	88.7

X	X	M	I	L	E	S	A	H	E	A	D
7.6	13.6	25.3	32.3	35.1	40.6	46.2	57.9	65.1	71.4	76.6	83.7

Sign not to scale

COLOR	LEGEND AND BORDER BACKGROUND	BLACK WHITE	NON-REFLECTORIZED REFLECTORIZED
-------	------------------------------	-------------	---------------------------------

SIGN SIZE	SERIES BY LINE		
	1	2	3
24 x 24	4C	4C	4C

Sign not to scale

### GENERAL NOTES

All work to furnish and install these signs shall be included in the cost of the specified traffic control standards and shall not be paid separately.

All Illinois Standard signs shall conform to the latest edition of the "Illinois Standard Highway Signs Book" in effect on the date of invitation for bids.

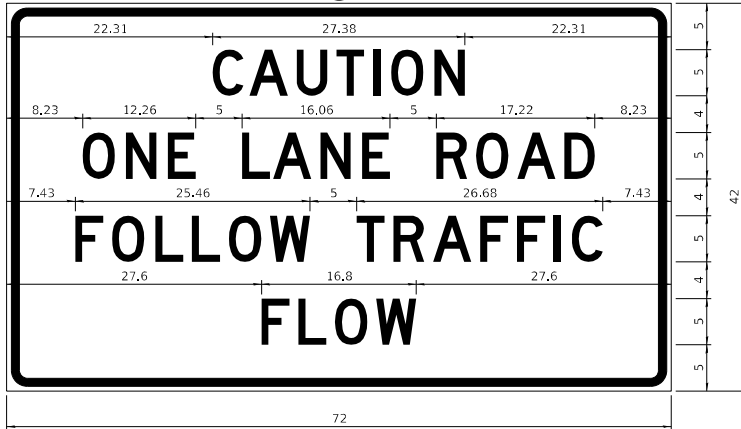
Signs shall meet the applicable portions of Sections 701 and 720 of the Standard Specifications.

All dimensions are in inches unless otherwise noted.

USER NAME = nsp	DESIGNED -	REVISED - 3-02-16	<b>STATE OF ILLINOIS DEPARTMENT OF TRANSPORTATION</b>	<b>REGION 2 / DISTRICT 2 STANDARD</b>	F.A.P. SITE	SECTION	COUNTY	TOTAL SHEETS	SHEET NO.	
PLOT SCALE = 20,0000 * 1/4"	DRAWN -	REVISED -			309	(110V-BR)BDR	WHITESIDE	45	41	
PLOT DATE = 5/19/2021	CHECKED -	REVISED -			CONTRACT NO. 64P53					
	DATE -	REVISED -			ILLINOIS FED. AID PROJECT					
SCALE: SHEET 3 OF 4 SHEETS STA. TO STA.										

**ENTRANCE SIGN FOR USE  
WITH TEMPORARY SIGNALS**

2



COLOR LEGEND AND BORDER BACKGROUND BLACK ORANGE NON-REFLECTORIZED REFLECTORIZED

2.25" Radius, 0.88" Border, 0.50" Indent;  
[CAUTION] D; [ONE LANE ROAD] D;  
[FOLLOW TRAFFIC] D; [FLOW] D

2 This sign shall be installed at entrances located between the temporary signals as shown in the staging plans.

**Table Of Widths And Spaces**

22.31	C	3.36	0.62	A	4.18	0.94	U	3.36	0.94	T	3.04	0.94	I	0.78	1.17	O	3.52	1.17	N	3.36	22.31
-------	---	------	------	---	------	------	---	------	------	---	------	------	---	------	------	---	------	------	---	------	-------

8.23	O	3.51	1.17	N	3.36	1.18	E	3.04
------	---	------	------	---	------	------	---	------

5.00	L	3.05	0.31	A	4.18	0.94	N	3.36	1.17	E	3.05
------	---	------	------	---	------	------	---	------	------	---	------

5.00	R	3.36	0.93	O	3.52	0.94	A	4.18	0.93	D	3.36	8.23
------	---	------	------	---	------	------	---	------	------	---	------	------

7.43	F	3.04	0.94	O	3.52	1.17	L	3.04	0.94	L	3.05	0.94	O	3.51	0.94	W	4.37
------	---	------	------	---	------	------	---	------	------	---	------	------	---	------	------	---	------

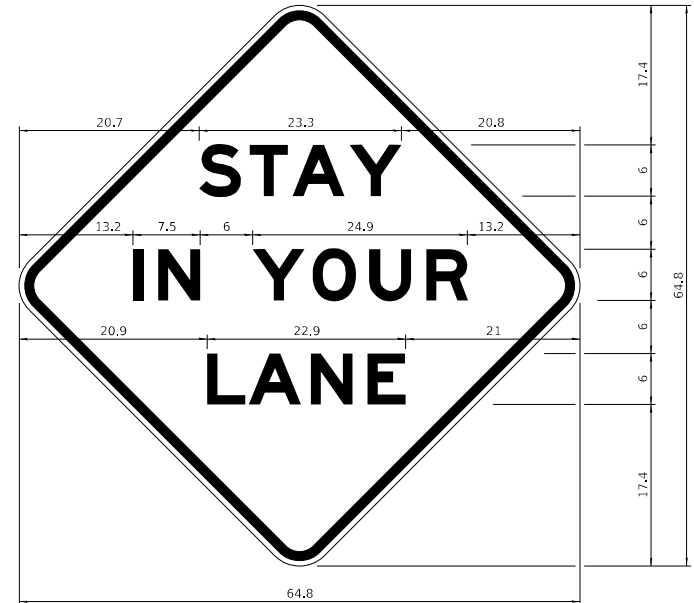
5.00	T	3.05	0.94	R	3.36	0.94	A	4.18	0.93	F	3.05	0.94	F	3.04	0.94	I	0.78	1.18	C	3.35	7.43
------	---	------	------	---	------	------	---	------	------	---	------	------	---	------	------	---	------	------	---	------	------

27.60	F	3.05	0.94	L	3.04	0.94	O	3.52	0.93	W	4.38	27.60
-------	---	------	------	---	------	------	---	------	------	---	------	-------

Sign not to scale

**WORK ZONE SIGN DETAILS**

**STAY IN YOUR LANE**



COLOR LEGEND AND BORDER BACKGROUND BLACK ORANGE NON-REFLECTORIZED REFLECTORIZED

48.0" across sides 3.8" Radius, 1.0" Border, 0.6" Indent;  
"STAY" E Mod; "IN YOUR" E Mod; "LANE" E Mod;

**Table of Letter and Object Lefts**

S	T	A	Y
20.7	26.8	31.6	38.0

I	N	Y	O	U	R
13.2	15.9	26.7	33.9	40.5	46.8

L	A	N	E
20.9	25.8	33.1	39.4

Sign not to scale

**GENERAL NOTES**

All work to furnish and install these signs shall be included in the cost of the specified traffic control standards and shall not be paid separately.

All Illinois Standard signs shall conform to the latest edition of the "Illinois Standard Highway Signs Book" in effect on the date of invitation for bids.

Signs shall meet the applicable portions of Sections 701 and 720 of the Standard Specifications.

All dimensions are in inches unless otherwise noted.

USER NAME = nsp	DESIGNED -	REVISED - 3-02-16
	DRAWN -	REVISED -
PLOT SCALE = 20.0000 * 1/8"	CHECKED -	REVISED -
PLOT DATE = 5/19/2021	DATE -	REVISED -

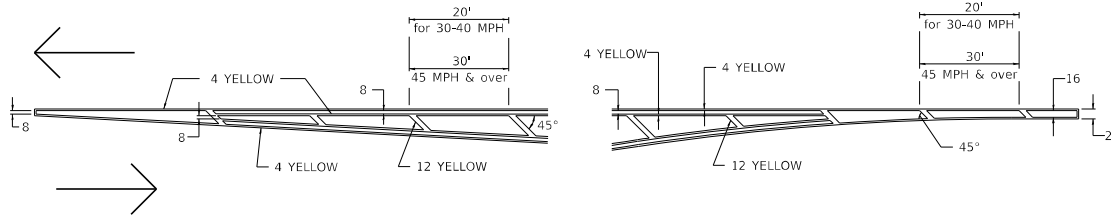
**STATE OF ILLINOIS  
DEPARTMENT OF TRANSPORTATION**

**REGION 2 / DISTRICT 2 STANDARD**

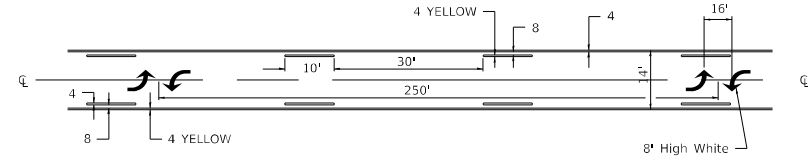
F.A.P. SITE = 309	SECTION = (110V-BR)BDR	COUNTY = WHITESIDE	TOTAL SHEETS = 45	SHEET NO. = 42
SCALE: SHEET 4 OF 4 SHEETS STA. TO STA.			ILLINOIS FED. AID PROJECT CONTRACT NO. 64P53	

# TYPICAL PAVEMENT MARKINGS

## TYPICAL PAVEMENT MARKING FOR FLUSH MEDIAN AT LEFT TURN LANE

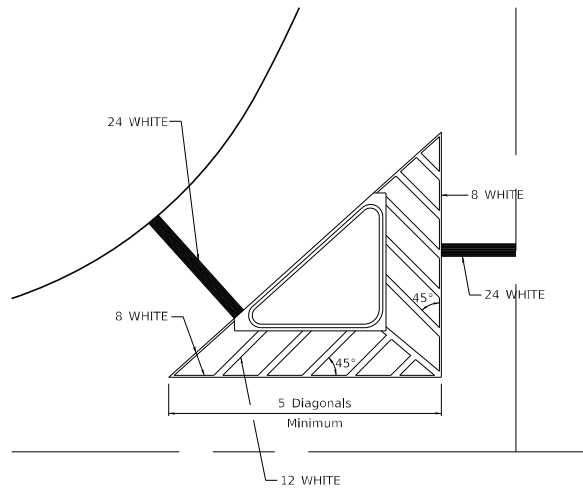


## MEDIAN PAVEMENT MARKING



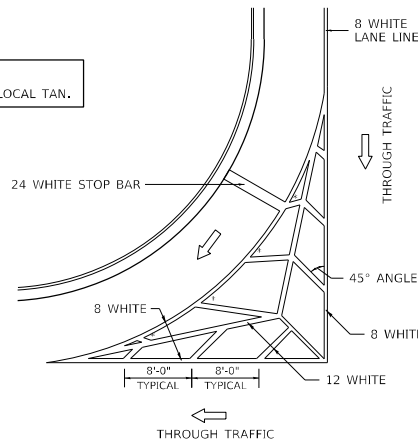
\*\* ALL DIMENSIONS ARE IN INCHES UNLESS OTHERWISE NOTED.

## TYPICAL ISLAND OFFSET SHOULDER WIDTH



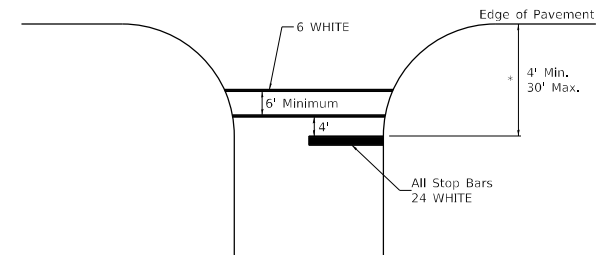
## TYPICAL MARKING FOR PAINTED ISLANDS

NOTE:  
\* 45° TO LOCAL TAN.



## STANDARD CROSSWALK MARKING

See Schedules for Locations



\* Distance to the nearest edge of the intersecting roadway in the absence of a marked crosswalk.

USER NAME = nsp	DESIGNED -	REVISED - 6-27-14
	DRAWN -	REVISED - 3-05-12
PLOT SCALE = 20,0000 * 1/4"	CHECKED -	REVISED -
PLOT DATE = 5/19/2021	DATE -	REVISED -

STATE OF ILLINOIS  
DEPARTMENT OF TRANSPORTATION

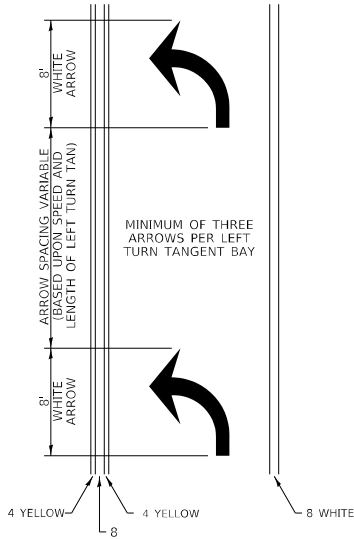
REGION 2 / DISTRICT 2 STANDARD

F.A.P. SITE = 309	SECTION (110V-BR)BDR	COUNTY WHITESIDE	TOTAL SHEETS 45	SHEET NO. 43
CONTRACT NO. 64P53				
ILLINOIS FED. AID PROJECT				

SCALE: SHEET 1 OF 3 SHEETS STA. TO STA.

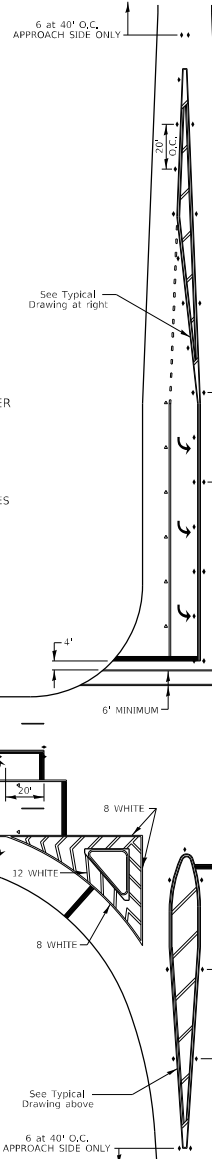
# TYPICAL PAVEMENT MARKINGS

## ARROW LAYOUT

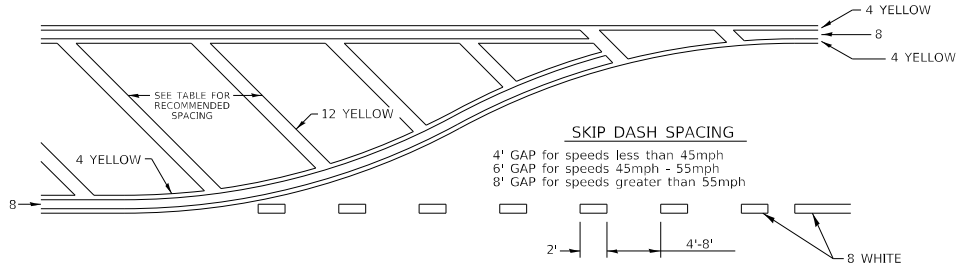


- ◀ ONE-WAY AMBER MARKER
- △ ONE-WAY CRYSTAL MARKER
- ◆ TWO-WAY AMBER MARKER

ALL DIMENSIONS ARE IN INCHES UNLESS OTHERWISE NOTED.



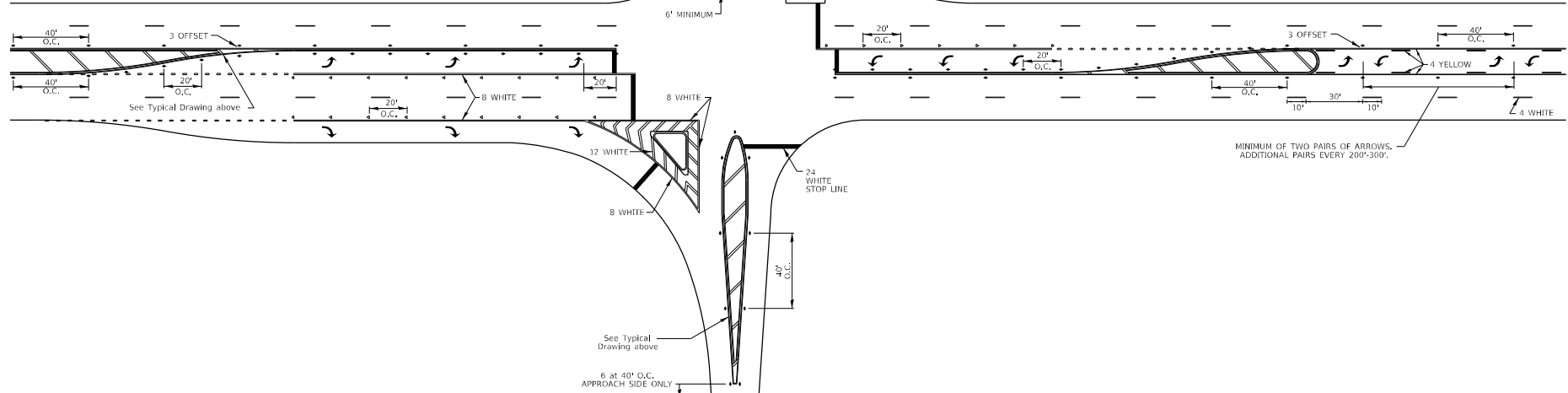
## TYPICAL PAVEMENT MARKING FOR FLUSH MEDIAN



### RECOMMENDED SPACING BETWEEN DIAGONALS (IN FEET)

Speed Limit Range	Continuous Median Area	Intersection Channelization	Objects (Islands)
less than 30MPH	50'	15'	10'
30-40MPH	75'	20'	15'
45MPH & over	75'	30'	20'

NOTE: if the spacing recommended in the Table does not permit at least five diagonal lines in the area being marked, the spacing from the next lowest speed range should be used. The recommended spacing is measured parallel to the pavement center line.



USER NAME = nsp	DESIGNED -	REVISED - 6-27-14
	DRAWN -	REVISED - 3-05-12
PLOT SCALE = 20,0000 * 1/4"	CHECKED -	REVISED -
PLOT DATE = 5/19/2021	DATE -	REVISED -

STATE OF ILLINOIS  
DEPARTMENT OF TRANSPORTATION

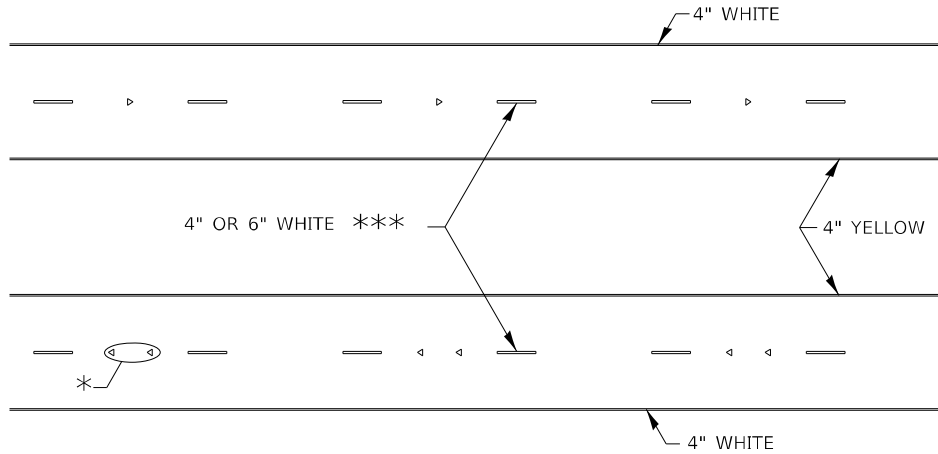
REGION 2 / DISTRICT 2 STANDARD

F.A.P. SITE = 309	SECTION (110V-BR)BDR	COUNTY WHITESIDE	TOTAL SHEETS 45	SHEET NO. 44
CONTRACT NO. 64P53				

SCALE: SHEET 2 OF 3 SHEETS STA. TO STA.

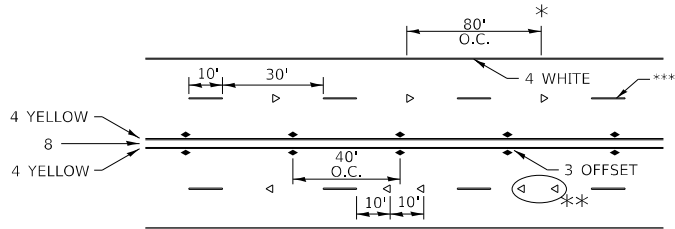


# TYPICAL PAVEMENT MARKINGS



\* SEE HIGHWAY STANDARD 781001 FOR SPACING DETAILS.  
USE DOUBLE MARKERS WHEN ADT  $\geq$  20,000.

## MULTI-LANE / DIVIDED



\* REDUCE TO 40' O.C. ON CURVES WHERE ADVISORY SPEEDS ARE 10 MPH LOWER THAN POSTED SPEEDS.

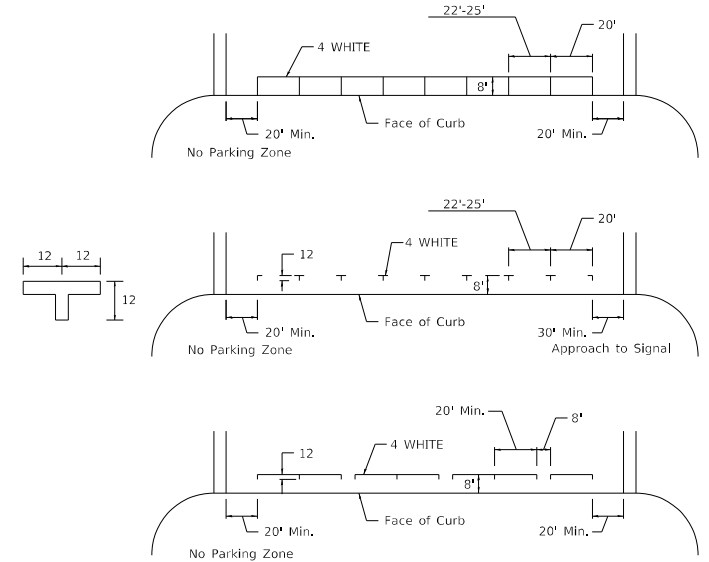
\*\* USE DOUBLE MARKERS WHEN ADT  $\geq$  20,000

\*\*\* CENTERLINE SKIP DASH PAVEMENT MARKING SPEED LIMIT LESS THAN 40 MPH USE 4" LINE. SPEED LIMIT 40 MPH AND OVER USE 6" LINE.

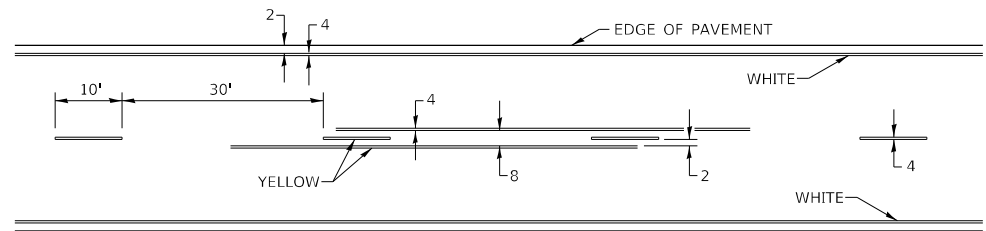
## MULTI-LANE / UNDIVIDED & ONE WAY

(FOR MULTI-LANE UNDIVIDED HIGHWAYS USE THIS DETAIL NOT HIGHWAY STANDARD 781001)

## TYPICAL PARKING SPACING



## TYPICAL PAVEMENT MARKING FOR TWO LANE SECTION - NO PASSING ZONES



## SYMBOLS

USER NAME - nsp	DESIGNED -	REVISED - 6-27-14
	DRAWN -	REVISED - 8-27-13
PLOT SCALE = 20,000 * 1/4"	CHECKED -	REVISED - 11-28-12
PLOT DATE = 5/19/2021	DATE -	REVISED -

STATE OF ILLINOIS  
DEPARTMENT OF TRANSPORTATION

REGION 2 / DISTRICT 2 STANDARD

SCALE: SHEET 3 OF 3 SHEETS STA. TO STA.

F.A.P. SITE	SECTION	COUNTY	TOTAL SHEETS	SHEET NO.
309	(110V-BR)BDR	WHITESIDE	45	45
CONTRACT NO. 64P53			ILLINOIS FED. AID PROJECT	