

STATE OF ILLINOIS
DEPARTMENT OF TRANSPORTATION

F.A.I. RTE.	SECTION	COUNTY	TOTAL SHEETS	SHEET NO.
57	38(3-9)PP-2	IROQUOIS	11	1
		ILLINOIS	CONTRACT NO. 66L83	

INDEX OF SHEETS

1. COVER SHEET
2. GENERAL NOTES
3. SUMMARY OF QUANTITIES
4. TYPICAL SECTIONS
- 5 - 7. SCHEDULES
8. TRAFFIC CONTROL AND PROTECTION, STANDARD 701400
- 9 - 10. CLASS A PATCHING DETAILS
11. PAVEMENT MARKING

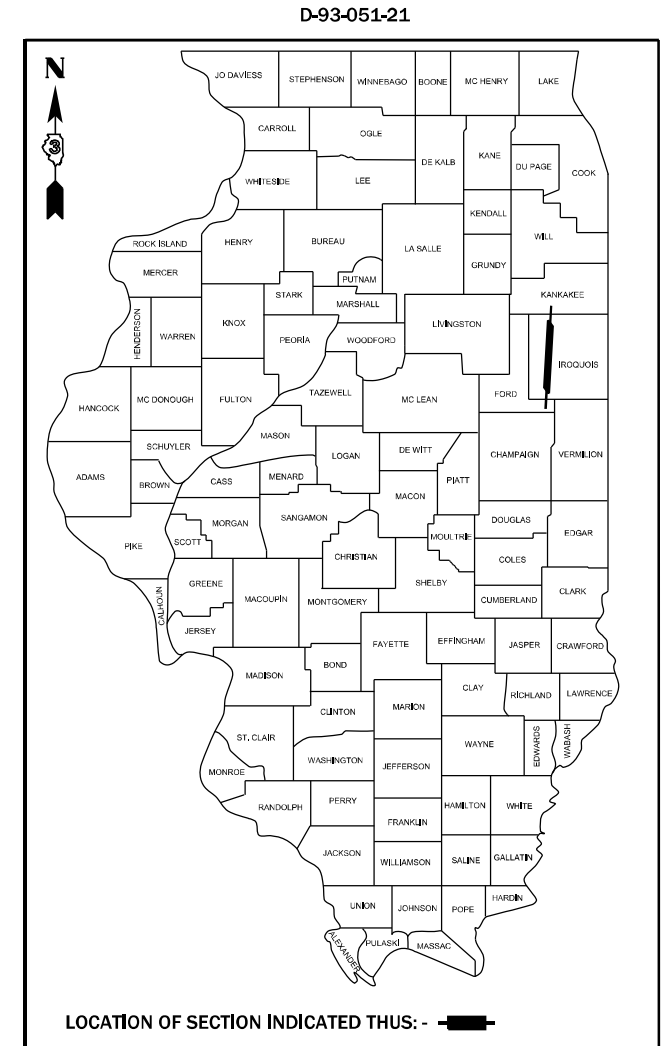
STANDARDS

- | | |
|-----------|--|
| 000001-08 | STANDARD SYMBOLS, ABBREVIATIONS AND PATTERNS |
| 001001-02 | AREAS OF REINFORCEMENT BARS |
| 001006 | DECIMAL OF AN INCH AND OF A FOOT |
| 701101-05 | OFF-ROAD OPERATIONS, MULTILANE, 15' (4.5 m) TO 24" (600 mm) FROM PAVEMENT EDGE |
| 701106-02 | OFF-ROAD OPERATIONS, MULTILANE, MORE THAN 15' (4.5 m) AWAY |
| 701401-12 | LANE CLOSURE, FREEWAY/EXPRESSWAY |
| 701411-09 | LANE CLOSURE, MULTILANE, AT ENTRANCE OR EXIT RAMP FOR SPEEDS ≥ 45 MPH |
| 701426-09 | LANE CLOSURE, MULTILANE INTERMITTENT OR MOVING OPERATION, FOR SPEEDS ≥ 45 MPH |
| 701428-01 | TRAFFIC CONTROL, SETUP AND REMOVAL, FREEWAY/EXPRESSWAY |
| 701901-08 | TRAFFIC CONTROL DEVICES |
| 701400-10 | APPROACH TO LANE CLOSURE, FREEWAY/EXPRESSWAY |

PROPOSED HIGHWAY PLANS

F.A.I. ROUTE 57 (I-57) 38(3-9)PP-2 PAVEMENT PATCHING IROQUOIS

C-93-087-21



FUNCTIONAL CLASSIFICATION
RURAL INTERSTATE
F.A.I. ROUTE 57 (I-57)
2019 ADT = 17900
P.V. 60.9% S.U. 3.9% M.U. 35.2%

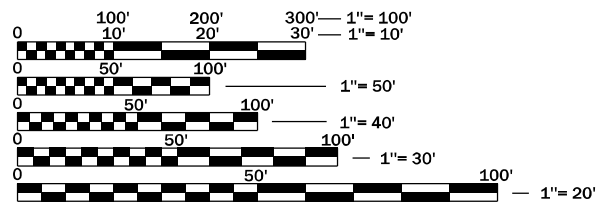
STATE OF ILLINOIS
DEPARTMENT OF TRANSPORTATION

SUBMITTED June 21, 2021

[Signature]
REGIONAL ENGINEER

June 25, 2021
[Signature]
ENGINEER OF DESIGN AND ENVIRONMENT

June 25, 2021
[Signature]
DIRECTOR OF HIGHWAYS PROJECT IMPLEMENTATION



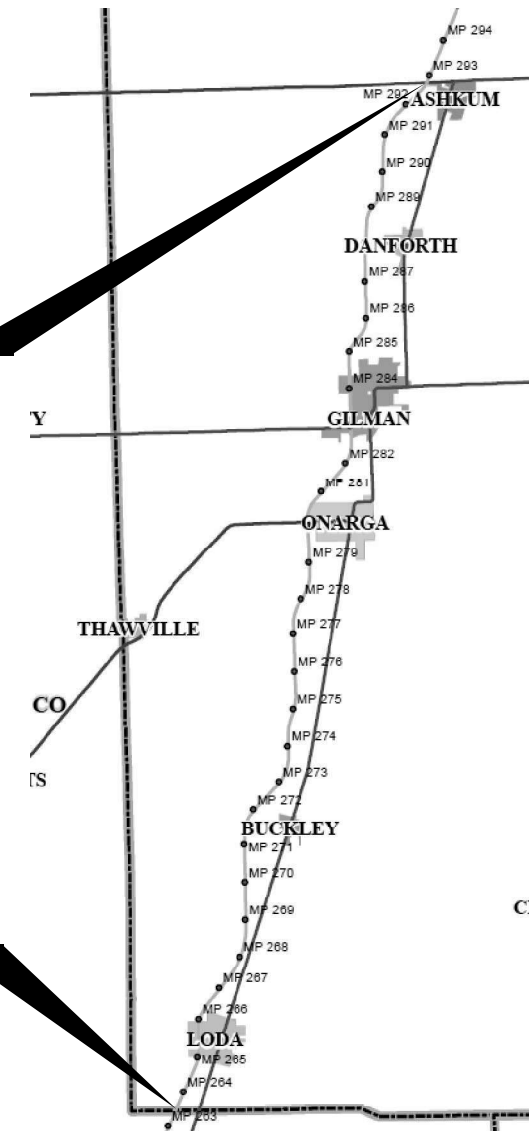
FULL SIZE PLANS HAVE BEEN PREPARED USING STANDARD ENGINEERING SCALES. REDUCED SIZED PLANS WILL NOT CONFORM TO STANDARD SCALES. IN MAKING MEASUREMENTS ON REDUCED PLANS, THE ABOVE SCALES MAY BE USED.

J.U.L.I.E.
JOINT UTILITY LOCATION INFORMATION FOR EXCAVATION
1-800-892-0123
OR 811

PROJECT ENGINEER: YOGESH PATEL
UNIT CHIEF: RON WOODSHANK
DISTRICT 3 NO. (815) 434-6131
CONTRACT NO. 66L83

END IMPROVEMENT
IL ROUTE 116 (ASHKUM)
M.M. 292.86

BEGIN IMPROVEMENT
FORD COUNTY LINE
M.M. 263.51



GENERAL NOTES

PLAN DIMENSIONS AND DETAILS RELATIVE TO EXISTING PLANS ARE SUBJECT TO NOMINAL CONSTRUCTION VARIATIONS. THE CONTRACTOR SHALL FIELD VERIFY EXISTING DIMENSIONS AND DETAILS AFFECTING NEW CONSTRUCTION AND MAKE NECESSARY APPROVED ADJUSTMENTS PRIOR TO CONSTRUCTION OR ORDERING OF MATERIALS. SUCH VARIATIONS SHALL NOT BE CAUSE FOR ADDITIONAL COMPENSATION FOR A CHANGE IN SCOPE OF WORK; HOWEVER, THE CONTRACTOR WILL BE PAID FOR THE QUANTITY ACTUALLY FURNISHED AT THE UNIT PRICE BID FOR THE WORK.

FOR STABILIZATION, ALL TYPE III BARRICADES WILL REQUIRE A MINIMUM OF FOUR SAND BAGS PER BARRICADE.

ALL EXCAVATED MATERIAL, WHICH INCLUDES DIGGING OR GRADING OF ANY SOIL OR FILL MATERIAL, WITH THE EXCEPTION OF AGGREGATE FILLS, MUST BE INCORPORATED WITHIN THE IDOT RIGHT OF WAY DUE TO ENVIRONMENTAL DOCUMENTATION REQUIREMENTS.

ANY REFERENCE TO A STANDARD IN THESE PLANS SHALL BE INTERPRETED TO MEAN THE EDITION AS INDICATED BY THE SUBNUMBER SHOWN IN THE LIST OF STANDARDS OR THE COPY INCLUDED IN THESE PLANS.

THE CONTRACTOR SHALL CONTACT JULIE AT LEAST 48 HOURS PRIOR TO EXCAVATION TO DETERMINE WHICH UTILITIES ARE IN THE AREA.

COMMITMENTS

STATE OF ILLINOIS
DEPARTMENT OF TRANSPORTATION
DISTRICT THREE
AS BUILT INFORMATION

SUPERVISING CONSTRUCTION FIELD ENGINEER

RESIDENT ENGINEER / TECHNICIAN

START & END DATES
OF CONSTRUCTION:

INSPECTORS:

STATE OF ILLINOIS
DEPARTMENT OF TRANSPORTATION
DISTRICT THREE

PREPARED BY: _____
DISTRICT STUDIES & PLANS ENGINEER

DATE: _____

EXAMINED BY: _____
DISTRICT CONSTRUCTION ENGINEER

DISTRICT MATERIALS ENGINEER

DISTRICT OPERATIONS ENGINEER

STATE OF ILLINOIS
DEPARTMENT OF TRANSPORTATION

GENERAL NOTES

SCALE: SHEET 1 OF 1 SHEETS STA. TO STA.

F.A.I. RTE.	SECTION	COUNTY	TOTAL SHEETS	SHEET NO.
57	38(3-9)PP-2	IROQUOIS	11	2
CONTRACT NO. 66L83				
ILLINOIS FED. AID PROJECT				

USER NAME = woodshank1	DESIGNED - RW	REVISED -
	DRAWN - RW	REVISED -
PLOT SCALE = 100,0000' / in.	CHECKED - YP	REVISED -
PLOT DATE = 3/8/2021	DATE - 3/8/2021	REVISED -

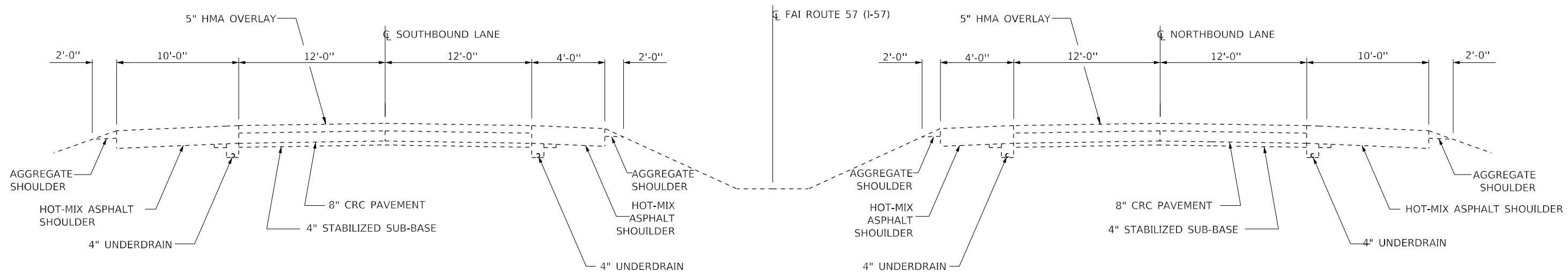
CONSTRUCTION CODE
CONTRACT MAINTENANCE
100% STATE
ROADWAY
0006
RURAL

CODE NO.	ITEM	UNIT	TOTAL QUANTITY	
44200610	CLASS A PATCHES, TYPE II, 13 INCH	SQ YD	734	734
44200612	CLASS A PATCHES, TYPE III, 13 INCH	SQ YD	179	179
44201294	CLASS B PATCH - EXPANSION JOINT	FOOT	72	72
44213000	PATCHING REINFORCEMENT	SQ YD	940	940
44213200	SAW CUTS	FOOT	3764	3764
44213204	TIE BARS 3/4"	EACH	4406	4406
67100100	MOBILIZATION	L SUM	1	1
70100420	TRAFFIC CONTROL AND PROTECTION, STANDARD 701411	EACH	16	16
70100800	TRAFFIC CONTROL AND PROTECTION, STANDARD 701401	L SUM	1	1
70103815	TRAFFIC CONTROL SURVEILLANCE	CAL DA	12	12
70107025	CHANGEABLE MESSAGE SIGN	CAL DA	14	14
* 78008210	POLYUREA PAVEMENT MARKING TYPE I - LINE 4"	FOOT	706	706
* 78008230	POLYUREA PAVEMENT MARKING TYPE I - LINE 6"	FOOT	180	180
X2700001	TEMPORARY RUMBLE STRIPS (SPECIAL)	EACH	8	8

*= SPECIALTY ITEM

MODEL: Default
 FILE: M:\GIS\Projects\GIS\Projects\DOT\Office\District 3\Project\03366183\CADD\03366183-PLAN5.dgn

USER NAME = woodshankri	DESIGNED - RW	REVISED -	STATE OF ILLINOIS DEPARTMENT OF TRANSPORTATION	SUMMARY OF QUANTITIES			F.A.I. RTE.	SECTION	COUNTY	TOTAL SHEETS	SHEET NO.
DRAWN - RW	REVISED -	57					38(3-9)PP-2	IROQUOIS	11	3	
PLOT SCALE = 100.0000' / in.	CHECKED - YP	REVISED -		SCALE: SHEET 1 OF 1 SHEETS STA. TO STA.			CONTRACT NO. 66L83				
PLOT DATE = 3/8/2021	DATE - 3/8/2021	REVISED -					ILLINOIS FED. AID PROJECT				



TYPICAL SECTION
M.M. 263.51 TO M.M. 292.86
IROQUOIS COUNTY

MODEL: Default
FILE NAME: p:\pub\lanscom.dwg
PROJECT: IROQUOIS COUNTY
DRAWN: RW
CHECKED: YP
DATE: 3/8/2021
SCALE: 1" = 100'-0"
SHEET: 1 OF 1
CONTRACT NO. 66L83

USER NAME = woodshank1	DESIGNED - RW	REVISED -
DRAWN - RW	REVISIONS	
PLOT SCALE = 100,0000 ' / in.	CHECKED - YP	REVISED -
PLOT DATE = 3/8/2021	DATE - 3/8/2021	REVISED -

STATE OF ILLINOIS
DEPARTMENT OF TRANSPORTATION

TYPICAL SECTION	
SCALE:	SHEET 1 OF 1 SHEETS STA. TO STA.

F.A.I. RTE. 57	SECTION 38(3-9)PP-2	COUNTY IROQUOIS	TOTAL SHEETS 11	SHEET NO. 4
CONTRACT NO. 66L83				
ILLINOIS FED. AID PROJECT				

PATCHING SCHEDULE
IROQUOIS COUNTY - NORTHBOUND LANES

LOCATION	PASSING LANE							DRIVING LANE						
	PATCH LENGTH	CLASS A		CLASS A PATCH EXPANSION JOINT	PATCH REINFORCEMENT	SAW CUTS	TIE BARS	PATCH LENGTH	CLASS A		CLASS A PATCH EXPANSION JOINT	PATCH REINFORCEMENT	SAW CUTS	TIE BARS
		TYPE II 13"	TYPE III 13"						TYPE II 13"	TYPE III 13"				
MILE MARKER	FEET	SQ YD	SQ YD	FOOT	SQ YD	FOOT	EACH	FEET	SQ YD	SQ YD	FOOT	SQ YD	FOOT	EACH
265.30								6	8			8	36	44
265.60	12		16		16	48	44							
265.65								6	8			8	36	44
265.70								6	8			8	36	44
265.75								6	8			8	36	44
265.80								6	8			8	36	44
265.90								6	8			8	36	44
266.80	10	13			13	44	44							
268.50								6	8			8	36	44
268.60								6	8			8	36	44
271.50	6	8			8	36	44							
271.60	6	8			8	36	44							
271.70	6	8			8	36	44							
273.80	12		16	12	16	48	44	12		16	12	16	48	44
277.30								6	8			8	36	44
277.35								6	8			8	36	44
277.40								6	8			8	36	44
277.50								6	8			8	36	44
277.60								10	13			13	44	44
279.40								10	13			13	44	44
280.20								10	13			13	44	44
281.80	6	8			8	36	44							
282.70								6	8			8	36	44
283.00	6	8			8	36	44							
283.90								8	11			11	40	44
284.10								10	13			13	44	44
284.30								6	8			8	36	44
285.00								12		16		16	48	44
285.10								6	8			8	36	44
285.70	6	8			8	36	44							
287.70	6	8			8	36	44							
289.40								6	8			8	36	44
290.25								10	13			13	44	44
290.30								6	8			8	36	44
290.30	12		16		16	48	44							
290.35								14		19		19	52	44
290.40								6	8			8	36	44
291.50								6	8			8	36	44
291.50	6	8			8	36	44							
292.20								6	8			8	36	44
292.30	94	77	48	12	125	476	528	216	236	51	12	287	1128	1276
TOTALS	310	313	99	24	412	1604	1804							

MODEL: Default
FILE NAME: p:\pub\lans\room\dot\illinois.gov\PWIDOT\Documents\DOT_Offices\District 3\Projects\0366\03\000\0366\03\04\05.dgn

USER NAME = woodstank1	DESIGNED - RW	REVISED -
	DRAWN - RW	REVISED -
PLOT SCALE = 100,0000' / in.	CHECKED - YP	REVISED -
PLOT DATE = 3/8/2021	DATE - 3/8/2021	REVISED -

**STATE OF ILLINOIS
DEPARTMENT OF TRANSPORTATION**

SCHEDULES - NORTHBOUND LANES

SCALE: SHEET 1 OF 1 SHEETS STA. TO STA.

F.A.I. RTE. 57	SECTION 38(3-9)PP-2	COUNTY IROQUOIS	TOTAL SHEETS 11	SHEET NO. 5
CONTRACT NO. 66L83			ILLINOIS FED. AID PROJECT	

PATCHING SCHEDULE
IROQUOIS COUNTY - NORTHBOUND LANES

LOCATION	PASSING LANE							DRIVING LANE						
	PATCH LENGTH	CLASS A		CLASS A PATCH EXPANSION JOINT	PATCH REINFORCEMENT	SAW CUTS	TIE BARS	PATCH LENGTH	CLASS A		CLASS A PATCH EXPANSION JOINT	PATCH REINFORCEMENT	SAW CUTS	TIE BARS
		TYPE II	TYPE III						TYPE II	TYPE III				
MILE MARKER	FEET	SQ YD	SQ YD	FOOT	SQ YD	FOOT	EACH	FEET	SQ YD	SQ YD	FOOT	SQ YD	FOOT	EACH
291.10								6	8			8	36	44
291.10	6	8			8	36	44							
290.80								6	8			8	36	44
290.40								6	8			8	36	44
290.40	6	8			8	36	44							
290.30								6	8			8	36	44
290.30	6	8			8	36	44							
289.90	6	8			8	36	44							
289.20	6	8			8	36	44							
289.10								6	8			8	36	44
288.20	6	8			8	36	44							
287.30	6	8			8	36	44							44
285.50								6	8			8	36	44
284.90	6	8			8	36	44							
284.00	6	8			8	36	44							
283.80								20				27	64	50
283.70	6	8			8	36	44							
283.10								6	8			8	36	44
282.60														
282.40								6	8			8	36	44
282.20	6	8			8	36	44							
281.95								10	13			13	44	44
281.90								8	11			11	40	44
281.85	6	8			8	36	44							
281.10	6	8			8	36	44							
280.90	6	8			8	36	44							
280.40								6	8			8	36	44
278.40								6	8			8	36	44
277.50	12		16		16	48	44							
276.60								6	8			8	36	44
276.50								6	8			8	36	44
276.40								6	8			8	36	44
276.20								6	8			8	36	44
275.90	6	8			8	36	44							
275.90								6	8			8	36	44
275.60								6	8			8	36	44
275.60	6	8			8	36	44							
275.50								6	8			8	36	44
275.20								6	8			8	36	44
275.00								6	8			8	36	44
274.90								6	8			8	36	44
274.90	6	8			8	36	44							
274.80								6	8			8	36	44
SUBTOTALS	114	136	16		152	660	792	164	192			219	904	1106
TOTALS	278	328	16		371	1564	1898							

MODEL: Default
 FILE NAME: p:\pub\lans\room\dot\illinois.gov\p\w\dot\Documents\DOT_Offices\District_3\Projects\0366\03\000\0366\03\PLANS.dwg

USER NAME = woodshank1	DESIGNED - RW	REVISED -
	DRAWN - RW	REVISED -
PLOT SCALE = 100,0000' / in.	CHECKED - YP	REVISED -
PLOT DATE = 3/8/2021	DATE - 3/8/2021	REVISED -

**STATE OF ILLINOIS
DEPARTMENT OF TRANSPORTATION**

SCHEDULES - SOUTHBOUND LANES

SCALE: SHEET 1 OF 2 SHEETS STA. TO STA.

F.A.I. RTE.	SECTION	COUNTY	TOTAL SHEETS	SHEET NO.
57	38(3-9)PP-2	IROQUOIS	11	6
CONTRACT NO. 66L83				
ILLINOIS FED. AID PROJECT				

**PATCHING SCHEDULE
IROQUOIS COUNTY - NORTHBOUND LANES**

LOCATION	PASSING LANE							DRIVING LANE						
	PATCH LENGTH	CLASS A		CLASS A PATCH EXPANSION JOINT	PATCH REINFORCEMENT	SAW CUTS	TIE BARS	PATCH LENGTH	CLASS A		CLASS A PATCH EXPANSION JOINT	PATCH REINFORCEMENT	SAW CUTS	TIE BARS
		TYPE II	TYPE III						TYPE II	TYPE III				
MILE MARKER	FEET	SQ YD	SQ YD	FOOT	SQ YD	FOOT	EACH	FEET	SQ YD	SQ YD	FOOT	SQ YD	FOOT	EACH
274.50								6	8			8	36	44
272.90								6	8			8	36	44
272.90	6	8			8	36	44							
272.85								12		16	12	16	48	44
272.85	12		16	12	16	48	44							
272.80								12		16	12	16	48	44
272.80	12		16	12	16	48	44							
272.10	10	13			13	44	44							
270.20								6	8			8	36	44
270.00								6	8			8	36	44
269.80								6	8			8	36	44
269.60								6	8			8	36	44
269.50								6	8			8	36	44
269.40								6	8			8	36	44
267.80							44	6	8			8	36	44
SUBTOTALS	40	21	32	24	53	176	220	78	72	32	24	104	420	484
TOTALS	118	93	64	48	157	596	704							

MODEL: Default
 FILE NAME: p:\p\lhamon.dwt\illinois.gov\PWIDOT\Documents\DOT_Offices\District 3\Projects\03661.03\CADD\03661.03_P_LANS.dwg

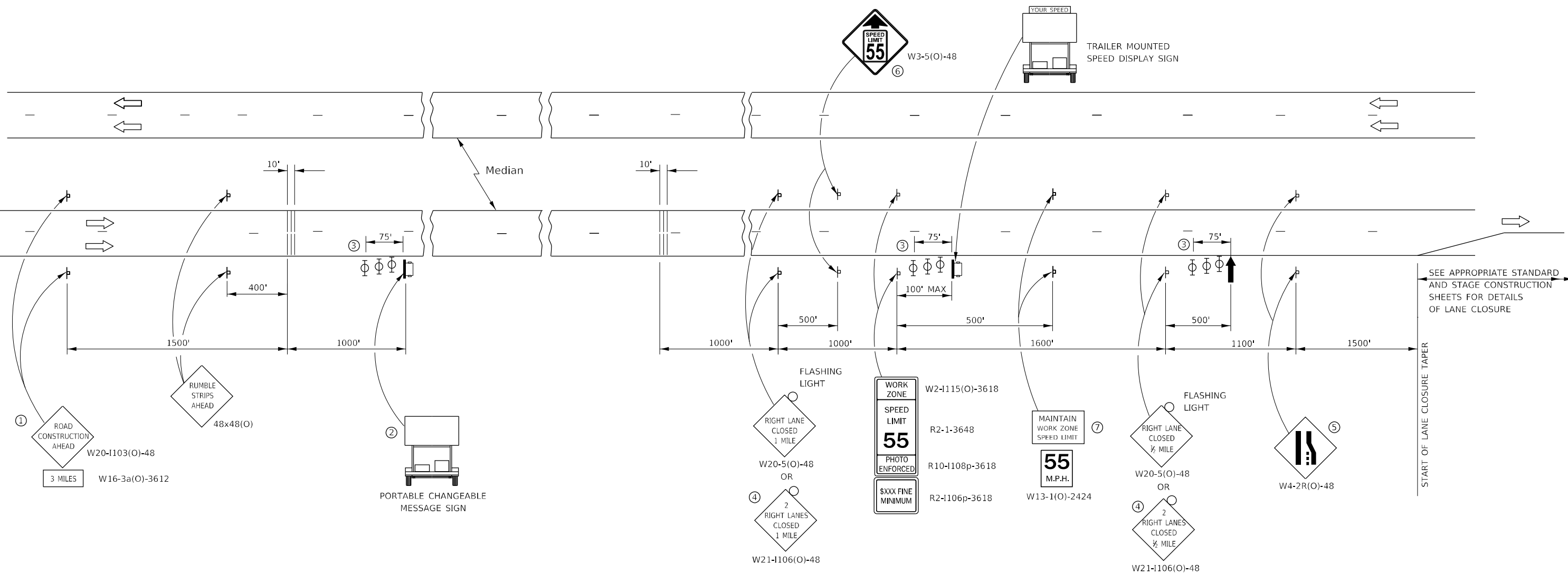
USER NAME = woodshank1	DESIGNED - RW	REVISED -
	DRAWN - RW	REVISED -
PLOT SCALE = 100,0000' / in.	CHECKED - YP	REVISED -
PLOT DATE = 3/8/2021	DATE - 3/8/2021	REVISED -

**STATE OF ILLINOIS
DEPARTMENT OF TRANSPORTATION**

SCHEDULES - SOUTHBOUND LANES

SCALE: SHEET 2 OF 2 SHEETS STA. TO STA.

F.A.I. RTE.	SECTION	COUNTY	TOTAL SHEETS	SHEET NO.
57	38(3-9)PP-2	IROQUOIS	11	7
CONTRACT NO. 66L83				
ILLINOIS FED. AID PROJECT				



SYMBOLS

- ARROW BOARD
- PORTABLE CHANGEABLE MESSAGE SIGN
- SIGN
- TYPE II BARRICADE, DRUM, OR VERTICAL BARRICADE WITH MONODIRECTIONAL FLASHING LIGHT
- TEMPORARY RUMBLE STRIPS (SEE SPECIAL PROVISION)

- ① THE ROAD CONSTRUCTION AHEAD SIGN SHALL BE LOCATED 3 MILES IN ADVANCE OF THE PROJECT LIMITS.
- ② TO BE PLACED IN THE MEDIAN WHEN FEASIBLE. THE MESSAGE BOARD SHALL BE USED TO DISPLAY STATUS OF LANES WITHIN THE PROJECT. THE PRIMARY MESSAGES SHALL BE:
"RIGHT LANE CLOSED" / " x MILES AHEAD"
"LEFT LANE CLOSED" / " x MILES AHEAD"
"ALL LANES OPEN"
- ③ THREE, TYPE II BARRICADES, DRUMS, OR VERTICAL BARRICADES AT 25' CENTERS.
- ④ THIS SIGN SHALL BE USED WHEN 2 LANES ARE CLOSED.
- ⑤ WHEN THE LEFT LANE IS CLOSED, SWITCH THESE TWO SIGNS AND THE DIRECTION OF THE MERGE ARROW.
- ⑥ THIS SIGN SHALL ONLY BE USED IF THE EXISTING SPEED LIMIT IS GREATER THAN 65 MPH.

- ⑦ 48"x36" FLUORESCENT ORANGE SIGN WITH BLACK LETTERS.
48"
36" MAINTAIN WORK ZONE SPEED LIMIT 8" 6" 6"
COST OF THIS ADDITIONAL SIGN SHALL BE INCLUDED IN THIS STANDARD

GENERAL NOTE:

THIS STANDARD IS USED WHERE AT ANY TIME A LANE IS CLOSED ON A FREEWAY/EXPRESSWAY. WHEN THE LEFT LANE IS CLOSED, LEFT LANE CLOSED SIGNS SHALL BE SUBSTITUTED FOR THE RIGHT LAND CLOSED SIGNS.

THE FIRST TWO SIGNS, BOTH SETS OF RUMBLE STRIPS AND MESSAGE BOARD ARE STATIONARY.

THE LAST FIVE SIGNS AND ARROW BOARD SHALL BE MOVED AS NECESSARY TO MAINTAIN THE REQUIRED DISTANCE FROM THE START OF THE LANE CLOSURE TAPER(S).

MODEL: Default
 FILE NAME: p:\pub\lhamon\dot.illinois.gov\PIWDOT\Documents\IDOT_Offices\District_3\Projects\0366\83\CADD\0366\83_P\LAHS.dwg
 PROJECT: 0366

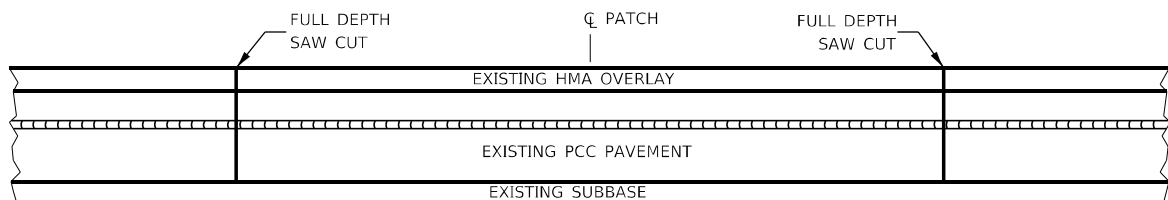
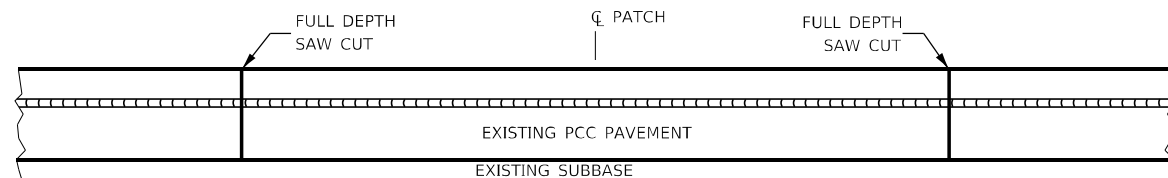
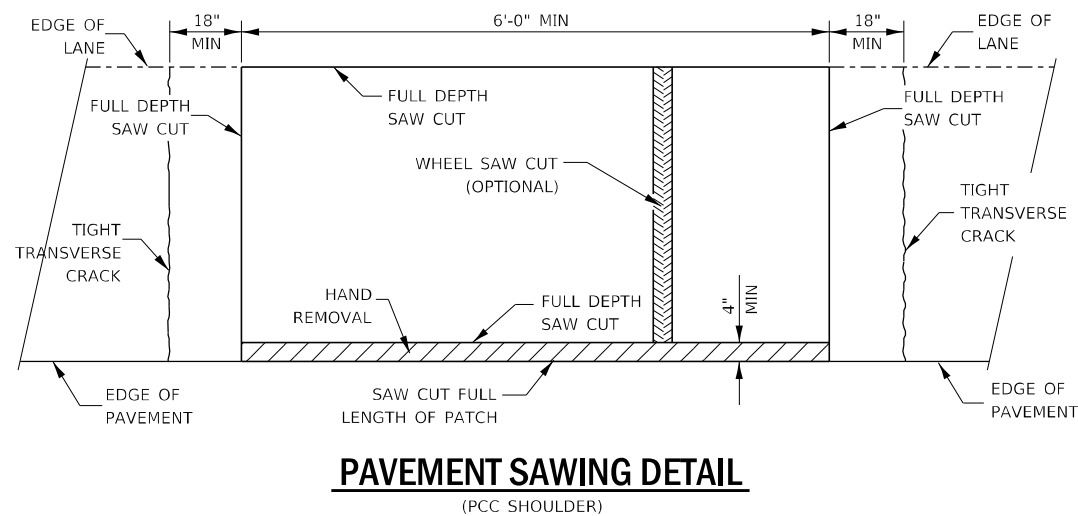
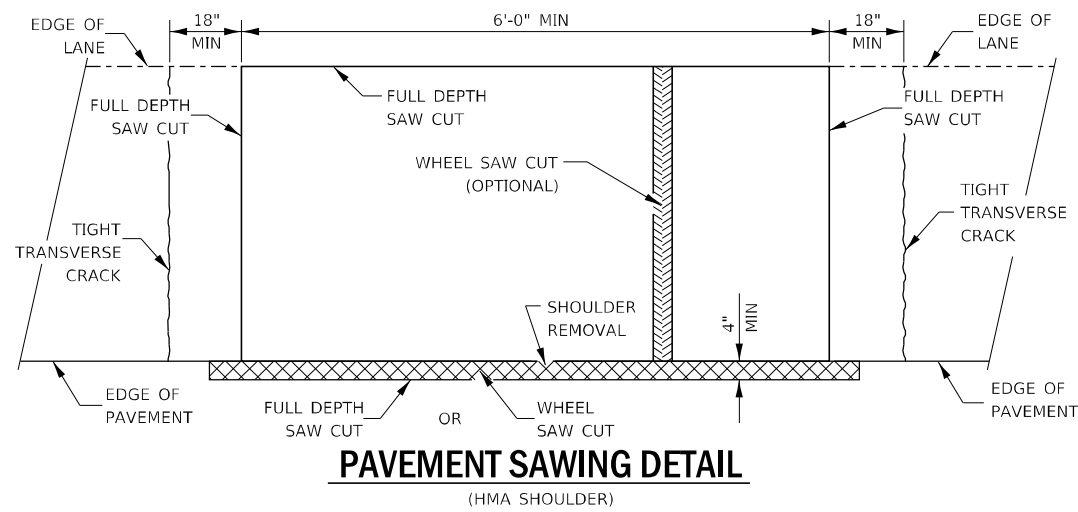
USER NAME = woodshank1	DESIGNED - RW	REVISED -
	DRAWN - RW	REVISED -
PLOT SCALE = 100,000' / in.	CHECKED - YP	REVISED -
PLOT DATE = 3/8/2021	DATE - 3/8/2021	REVISED -

**STATE OF ILLINOIS
DEPARTMENT OF TRANSPORTATION**

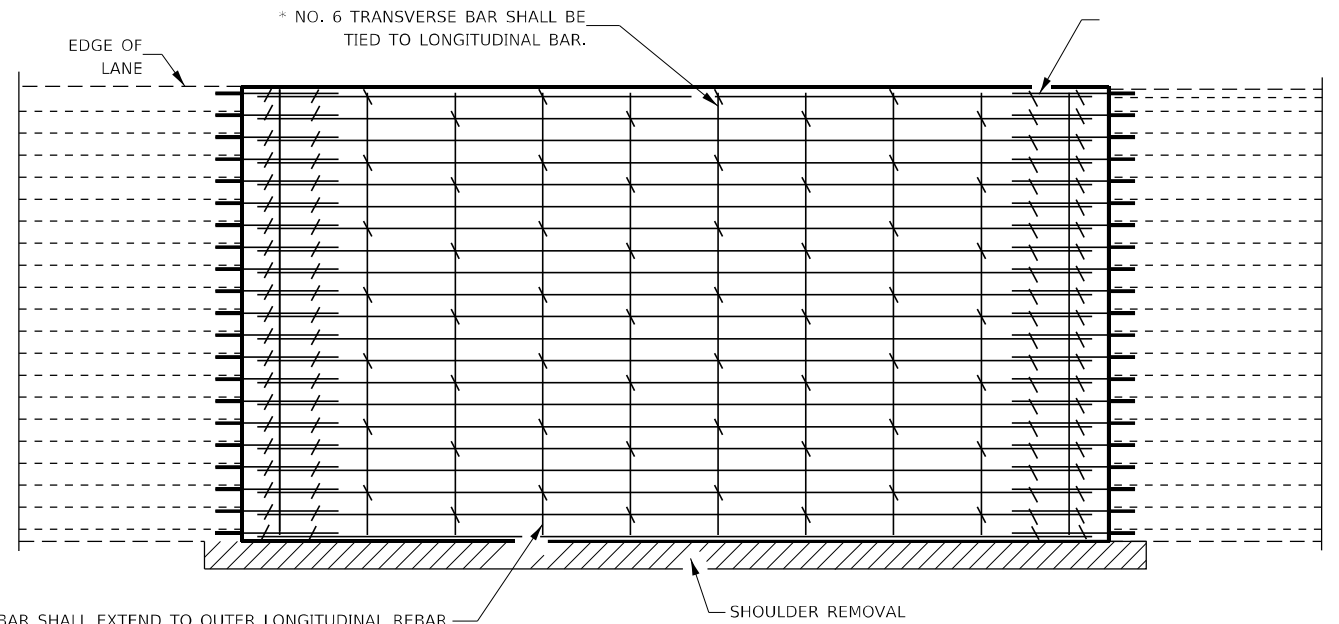
TRAFFIC CONTROL AND PROTECTION, STANDARD 701400

SCALE: SHEET 1 OF 1 SHEETS STA. TO STA.

F.A.I. RTE.	SECTION	COUNTY	TOTAL SHEETS	SHEET NO.
57	38(3-9)PP-2	IROQUOIS	11	8
CONTRACT NO. 66L83				
ILLINOIS FED. AID PROJECT				

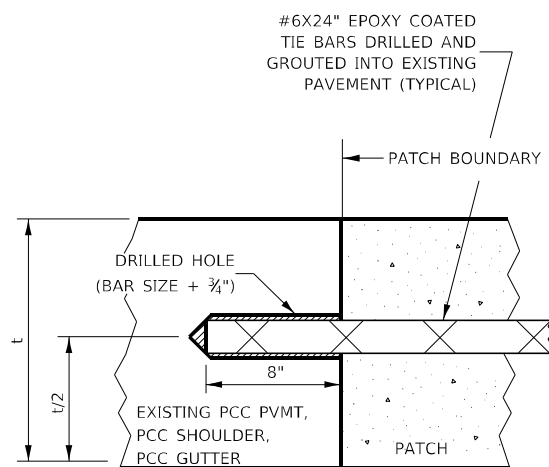


PAVEMENT SAWING DETAIL FOR CLASS A PATCHING (CRC PAVEMENT)



TRANSVERSE REBAR SHALL EXTEND TO OUTER LONGITUDINAL REBAR WHILE PROVIDING A MINIMUM 3" CLEARANCE FROM EXISTING PAVEMENT EDGE

PAVEMENT REINFORCEMENT DETAIL



LONGITUDINAL CONSTRUCTION JOINT

PATCHES MORE THAN 20' IN LENGTH SHALL BE TIED TO ADJACENT PAVEMENT, PCC SHOULDERS OR PCC CURB AND GUTTER WITH #6x24" EPOXY COATED TIE BARS AT 36" CENTERS.

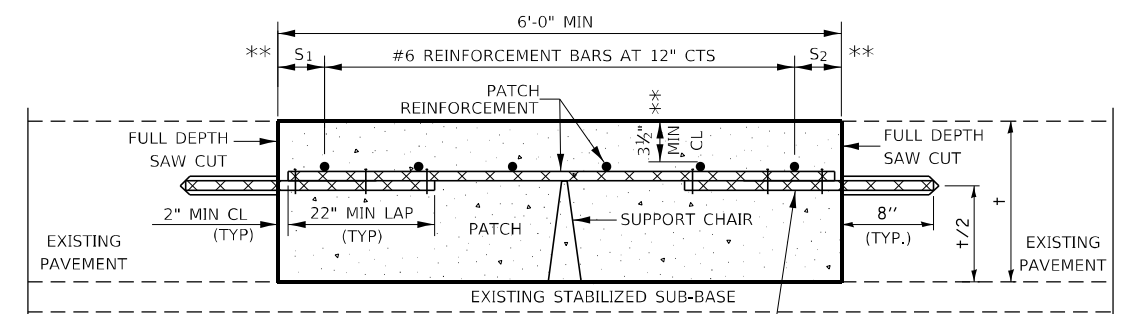
NOTES:

EXISTING #7 LONGITUDINAL REINFORCEMENT SPACING IS 6 1/2"

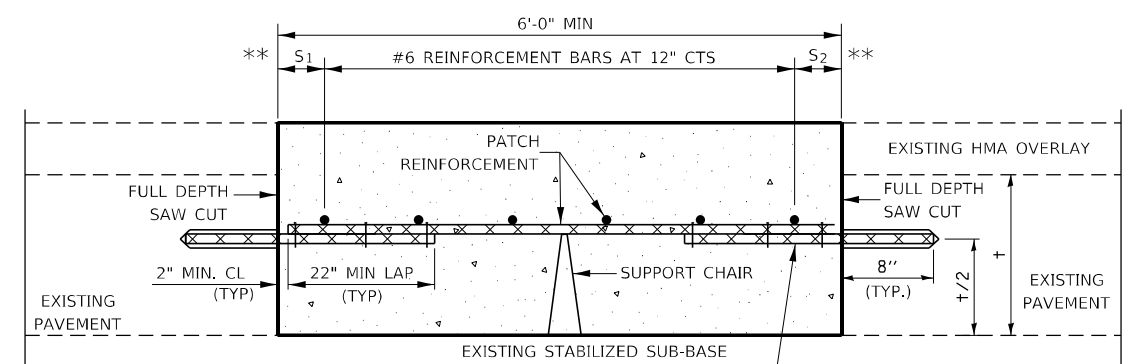
SPACING OF NEW LONGITUDINAL REINFORCEMENT AND NEW LONGITUDINAL TIE BARS SHALL MATCH SPACING OF EXISTING REINFORCEMENT AND SHALL BE TIED TOGETHER WITH A MINIMUM OF TWO TIES PER BAR.

* EVERY THIRD INTERSECTION MUST BE TIED. WHEN THE MINIMUM CLEARANCE CANNOT BE OBTAINED WITH THE TRANSVERSE REBAR ON TOP, THEN THE TRANSVERSE REBAR SHALL BE TIED TO THE BOTTOM OF THE LONGITUDINAL REBAR.

** VARIABLES WHERE S₁ AND S₂ ARE 2 1/2" MIN. AND 12" MAX.



WITHOUT HMA OVERLAY



WITH HMA OVERLAY

PATCHING DETAIL FOR CLASS A PATCHING (CRC PAVEMENT)

MODEL: Default
FILE NAME: pavementshopping\pavementshopping\DOT\Office\Drawings\3\Projects\0366183\CD001a\0366183_P-1418.dwg

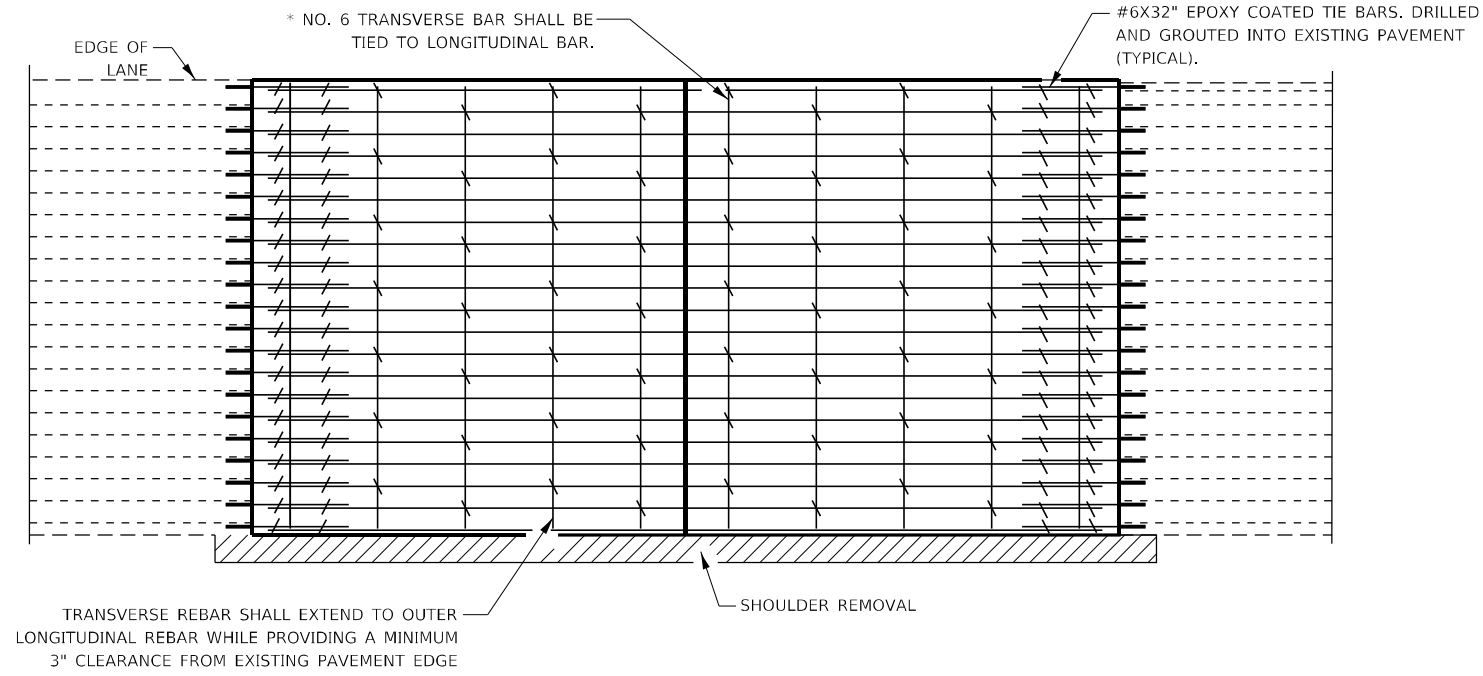
USER NAME = woodshank1	DESIGNED - RW	REVISED -
DRAWN - RW	REVISED -	
PLOT SCALE = 100,0000' / in.	CHECKED - YP	REVISED -
PLOT DATE = 3/8/2021	DATE - 3/8/2021	REVISED -

STATE OF ILLINOIS
DEPARTMENT OF TRANSPORTATION

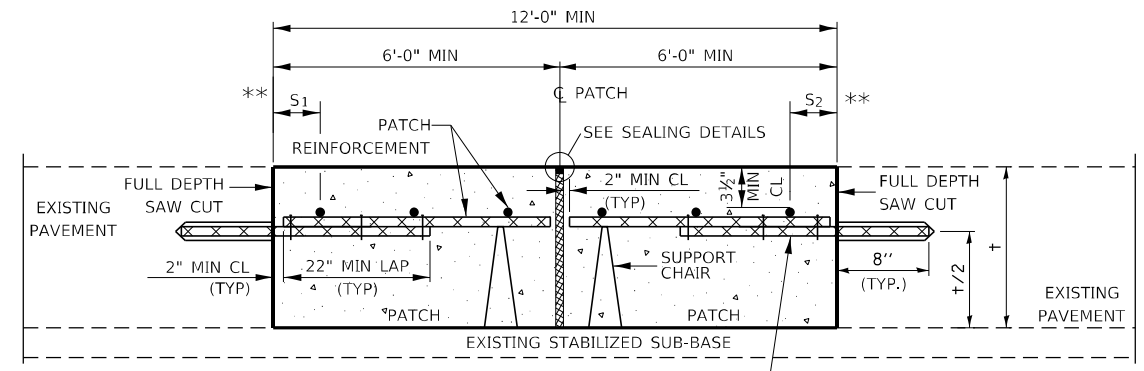
CLASS A PATCHING DETAILS

SCALE: SHEET 1 OF 2 SHEETS STA. TO STA.

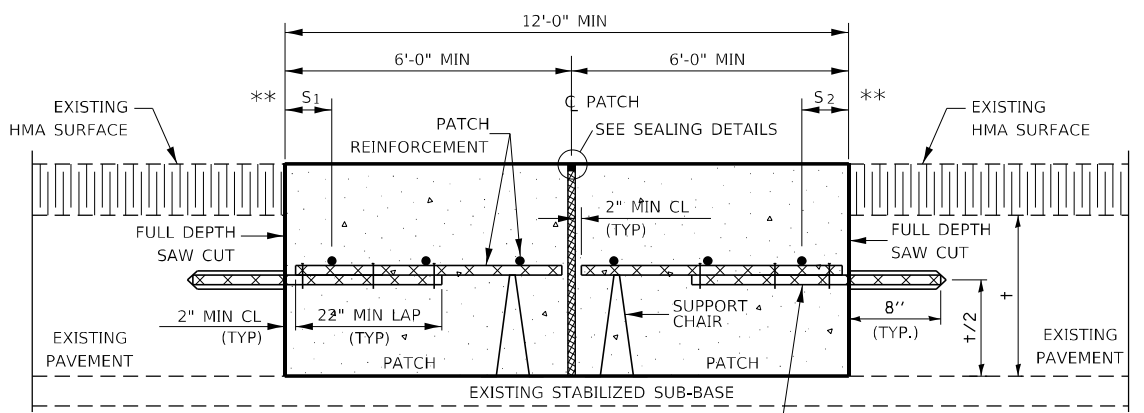
F.A.I. RTE. 57	SECTION 38(3-9)PP-2	COUNTY IROQUOIS	TOTAL SHEETS 11	SHEET NO. 9
CONTRACT NO. 66L83				
ILLINOIS FED. AID PROJECT				



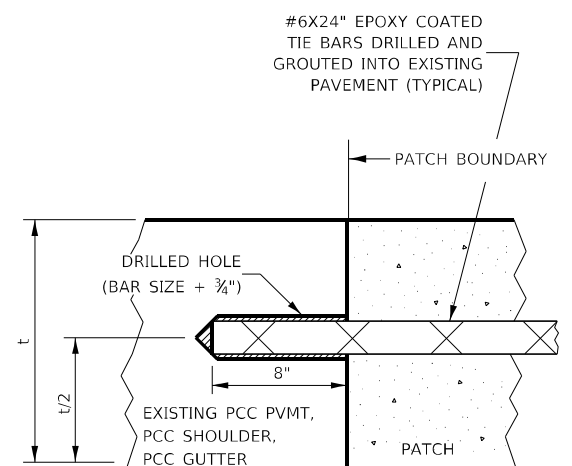
PAVEMENT REINFORCEMENT DETAIL



WITHOUT HMA OVERLAY

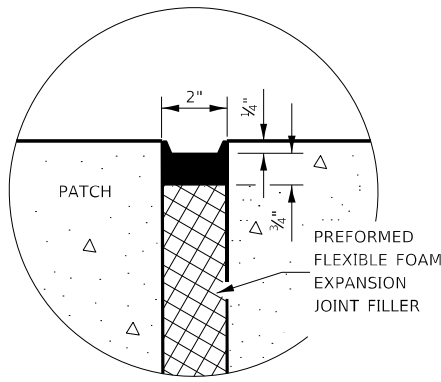


WITH HMA OVERLAY

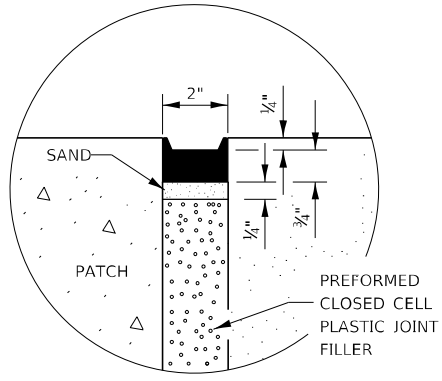


LONGITUDINAL CONSTRUCTION JOINT

PATCHES MORE THAN 20' IN LENGTH SHALL BE TIED TO ADJACENT PAVEMENT, PCC SHOULDERS OR PCC CURB AND GUTTER WITH #6x24" EPOXY COATED TIE BARS AT 36" CENTERS.



SEALING DETAIL



SEALING DETAIL

CLASS A PATCH WITH EXPANSION JOINT

- NOTES:**
- EXISTING LONGITUDINAL REINFORCEMENT SPACING; 4".
 - SPACING OF NEW LONGITUDINAL REINFORCEMENT AND NEW LONGITUDINAL TIE BARS SHALL MATCH SPACING OF EXISTING REINFORCEMENT AND SHALL BE TIED TOGETHER WITH A MINIMUM OF TWO TIES PER BAR.
 - SUPPORT CHAIRS SHALL BE REQUIRED WHENEVER PATCH LENGTH EXCEEDS 6'-0"
 - * EVERY THIRD INTERSECTION MUST BE TIED. WHEN THE MINIMUM CLEARANCE CANNOT BE OBTAINED WITH THE TRANSVERSE REBAR ON TOP, THEN THE TRANSVERSE REBAR SHALL BE TIED TO THE BOTTOM OF THE LONGITUDINAL REBAR.
 - ** VARIABLES WHERE S₁ AND S₂ ARE 2 1/2" MIN. AND 12" MAX.

MODEL: Default
FILE NAME: p:\pub\lhamon.dwg
PROJECT: PWDOT\Documents\DOT Office\Distric: 3\Project\03661.03\03661.D3661.03.PLAN.dwg

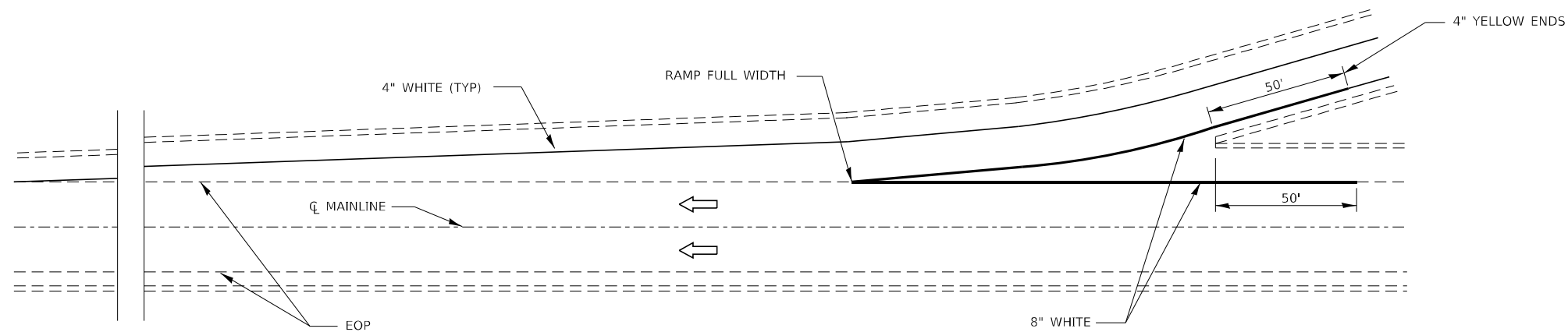
USER NAME = woodshank1	DESIGNED - RW	REVISED -
DRAWN - RW	REVISIONS -	
PLOT SCALE = 100,0000' / in.	CHECKED - YP	REVISED -
PLOT DATE = 3/8/2021	DATE - 3/8/2021	REVISED -

**STATE OF ILLINOIS
DEPARTMENT OF TRANSPORTATION**

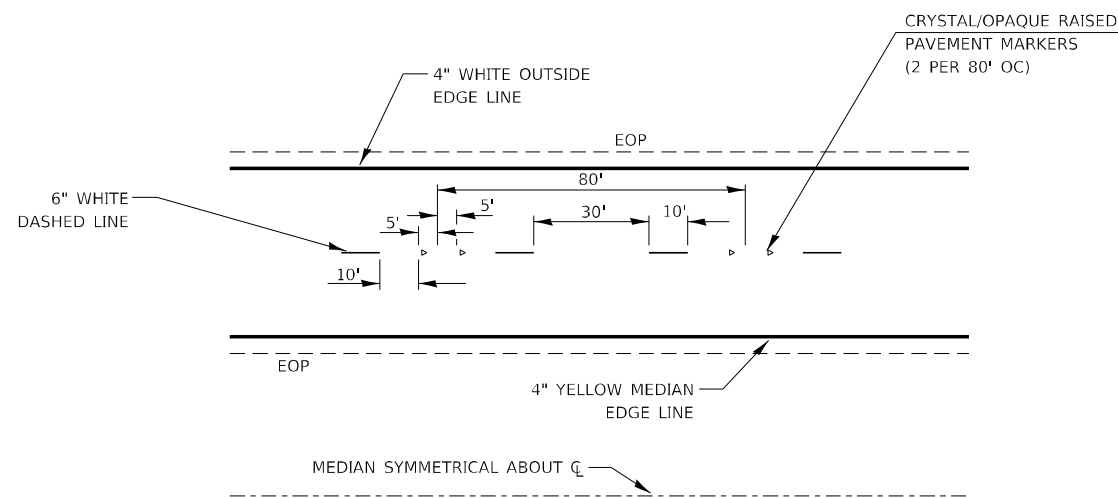
CLASS A PATCHING DETAILS

SCALE: SHEET 2 OF 2 SHEETS STA. TO STA.

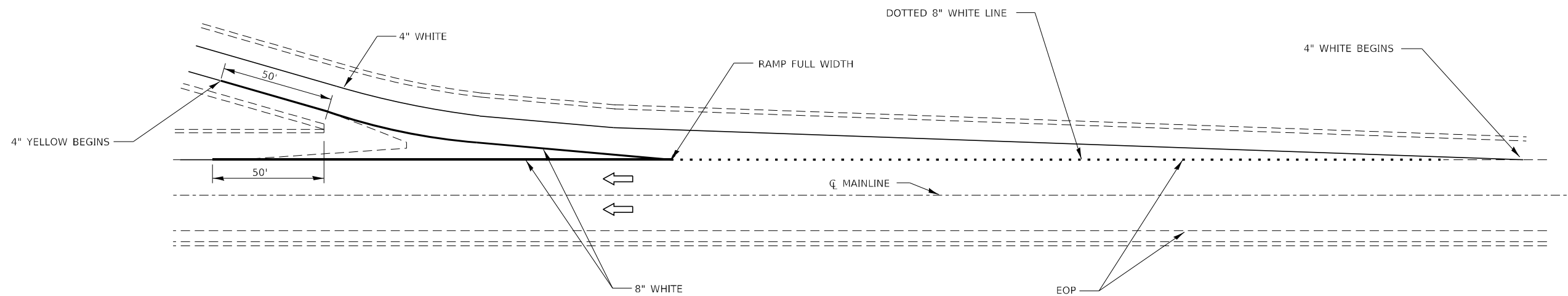
F.A.I. RTE.	SECTION	COUNTY	TOTAL SHEETS	SHEET NO.
57	38(3-9)PP-2	IROQUOIS	11	10
CONTRACT NO. 66L83				
ILLINOIS FED. AID PROJECT				



TYPICAL PAVEMENT MARKING FOR ENTRANCE RAMP TERMINALS



TYPICAL PAVEMENT MARKINGS



TYPICAL PAVEMENT MARKINGS FOR EXIT RAMP TERMINALS

MODEL: Default
 FILE NAME: p:\planningroom\dot\illinois\dot\illinois\dot\pww\dot\Documents\DOT_Offices\Default_3\Projects\ID366\83\CADD\83\PLANS.dwg

USER NAME = woodshank1	DESIGNED - RW	REVISED -
	DRAWN - RW	REVISED -
PLOT SCALE = 100,0000 ' / in.	CHECKED - YP	REVISED -
PLOT DATE = 3/8/2021	DATE - 3/8/2021	REVISED -

**STATE OF ILLINOIS
DEPARTMENT OF TRANSPORTATION**

TYPICAL PAVEMENT MARKING DETAILS

SCALE: SHEET 1 OF 1 SHEETS STA. TO STA.

F.A.I. RTE.	SECTION	COUNTY	TOTAL SHEETS	SHEET NO.
57	38(3-9)PP-2	IROQUOIS	11	11
CONTRACT NO. 66L83				
ILLINOIS FED. AID PROJECT				