

07-30-2021 LETTING ITEM 056

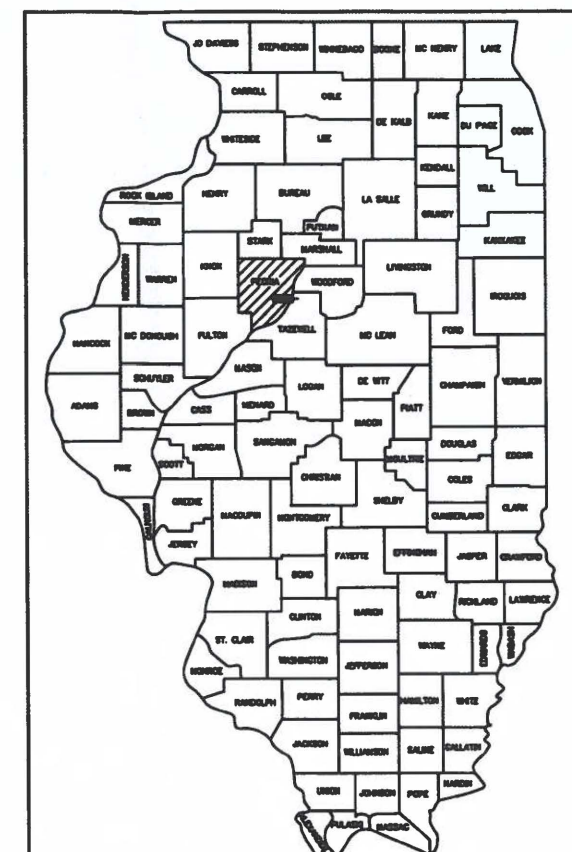
STATE OF ILLINOIS
DEPARTMENT OF TRANSPORTATION
PLANS FOR PROPOSED SIDEWALK

WILLOW KNOLLS DRIVE
CITY OF PEORIA
PEORIA COUNTY, ILLINOIS
SECTION 19-00385-00-SW
PROJECT NO. NB6E(971)
C-94-064-20

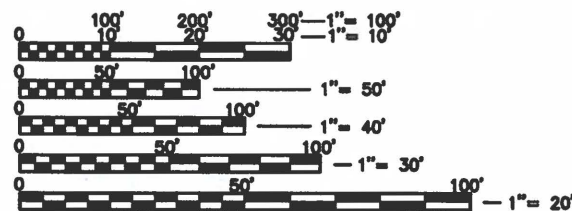
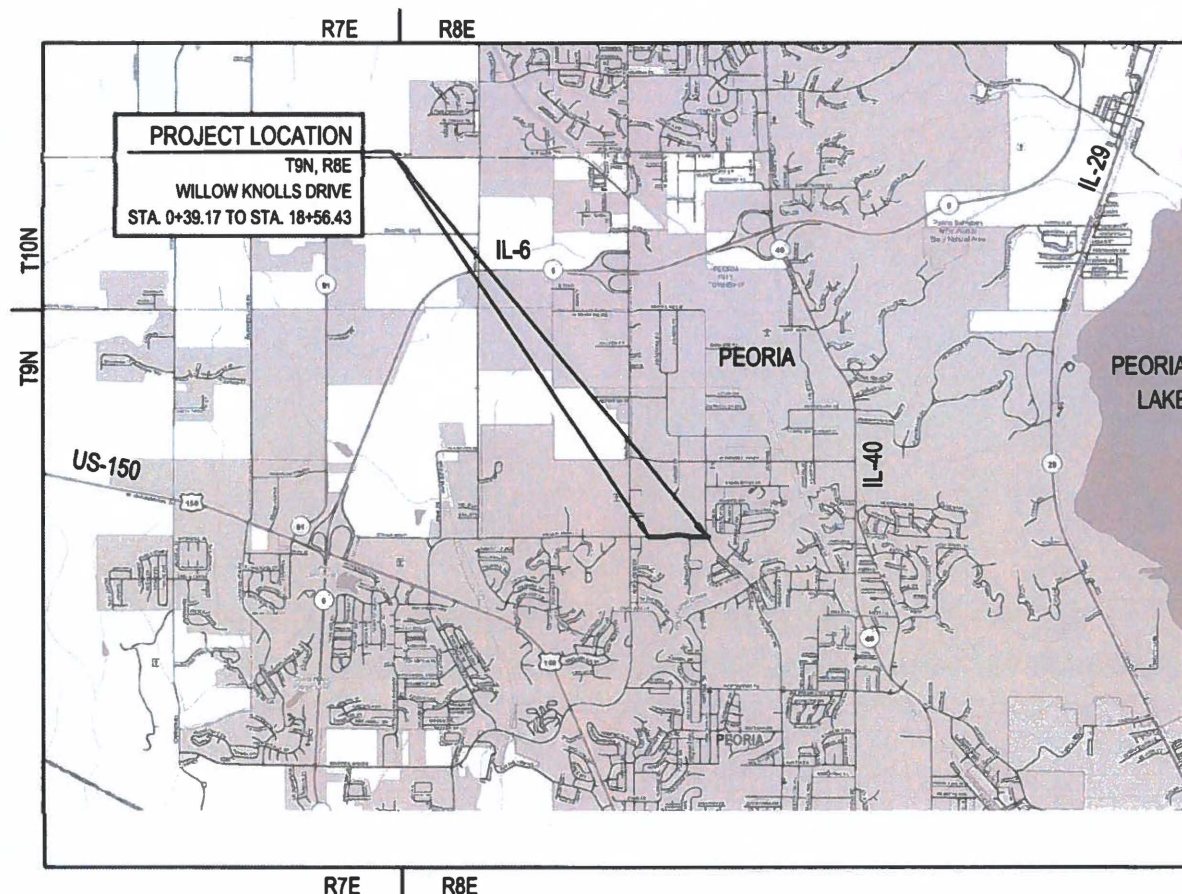
F.A. R.T.E.	SECTION	COUNTY	TOTAL SHEETS	SHEET NO.
	19-00385-00-SW	PEORIA	20	1
ILLINOIS	CONTRACT NO. 89786		COVER	

INDEX OF SHEETS

- 1 COVER SHEET
- 2 SUMMARY OF QUANTITIES & GENERAL NOTES
- 3-5 SCHEDULE OF QUANTITIES
- 6 TYPICAL SECTIONS
- 7-10 PLAN AND PROFILE SHEETS
- 11 ADA DETAIL SHEETS
- 12-20 CROSS SECTION SHEETS



LOCATION OF SECTION INDICATED THUS: [shaded box symbol]



FULL SIZE PLANS HAVE BEEN PREPARED USING STANDARD ENGINEERING SCALES. REDUCED SIZED PLANS WILL NOT CONFORM TO STANDARD SCALES. IN MAKING MEASUREMENTS ON REDUCED PLANS, THE ABOVE SCALES MAY BE USED.

J.U.L.I.E.
JOINT UTILITY LOCATING INFORMATION FOR EXCAVATION
1-800-892-0123
811 OR



GROSS LENGTH = 1825.40 FT. = 0.346 MI.
NET LENGTH = 1825.40 FT. = 0.346 MI.

AGENCY RESPONSIBLE FOR LETTING

APPROVED April 29 20 21
Audrea Kopp City Engineer
LOCAL AGENCY, POSITION

PASSED 05-04 20 21
Tom Saxon
DISTRICT ENGINEER, LOCAL ROADS & STREETS

RELEASING FOR BID
BASED ON LIMITED REVIEW MAY 14 20 21
Kensil A. Garnett
REGION 3 ENGINEER

I hereby certify that this Engineering document was prepared by me or under my direct personal supervision and that I am a duly licensed Professional Engineer under the laws of the State of Illinois.

Zachary D. Leach 04/29/21
Signature Date

Zachary D. Leach
Printed or Typed Name License Number 062-065588
My license renewal date is November 30, 2021



PRINTED BY THE AUTHORITY
OF THE STATE OF ILLINOIS

CATALOG NO. 036037-00
CONTRACT NO. 89786

APR 29, 2021 11:00 AM ZLEACH F:\JULIIE\181102\191102Z CITY OF PEORIA ENGINEERING RETAINERS\WORK ORDER 2\JULIIE\SHEETS\WILLOW KNOLLS\0001_121_1802.CAD.DWG

SUMMARY OF QUANTITIES

NO.	ITEM	UNIT	TOTALS
20200100	EARTH EXCAVATION	CU YD	250
20400800	FURNISHED EXCAVATION	CU YD	220
20900110	POROUS GRANULAR BACKFILL	CU YD	38
25000100	SEEDING, CLASS 1	ACRE	0.9
25000400	NITROGEN FERTILIZER NUTRIENT	POUND	81
25000500	PHOSPHOROUS FERTILIZER NUTRIENT	POUND	81
25000600	POTASSIUM FERTILIZER NUTRIENT	POUND	81
25100115	MULCH, METHOD 2	ACRE	0.9
28000250	TEMPORARY EROSION CONTROL SEEDING	POUND	90
28000400	PERIMETER EROSION BARRIER	FOOT	1695
28000500	INLET AND PIPE PROTECTION	EACH	7
28100107	STONE RIPRAP, CLASS A4	SQ YD	6.7
28200200	FILTER FABRIC	SQ YD	6.7
35101600	AGGREGATE BASE COURSE, TYPE B, 4 INCH	SQ YD	1077
40701801	HOT-MIX ASPHALT (FULL-DEPTH), 6 INCH	SQ YD	73
42300300	P.C.C. DRIVEWAY PAVEMENT, 7 INCH	SQ YD	130
42400200	P.C.C. SIDEWALK, 5 INCH	SQ FT	8526
42400800	DETECTABLE WARNINGS	SQ FT	20
44000100	PAVEMENT REMOVAL	SQ YD	73
44000200	DRIVEWAY PAVEMENT REMOVAL	SQ YD	132
44000500	COMB. CURB AND GUTTER REMOVAL	FOOT	40
44000600	SIDEWALK REMOVAL	SQ FT	1211
44004000	PAVED DITCH REMOVAL	FOOT	143
50104400	CONCRETE HEADWALL REMOVAL	EACH	2
542A0217	PIPE CULVERTS, CLASS A, TYPE 1, 12 INCH	FOOT	143
542A0220	PIPE CULVERTS, CLASS A, TYPE 1, 15 INCH	FOOT	48
54213660	PRECAST REINFORCED CONCRETE FLARED END SECTIONS, 15"	EACH	1
60236200	INLETS, TYPE A, TYPE B GRATE	EACH	4
60603500	COMBINED CONCRETE CURB & GUTTER, TYPE B-6.06	FOOT	24
60605000	COMBINED CONCRETE CURB & GUTTER, TYPE B-6.24	FOOT	16
67100100	MOBILIZATION	L SUM	1
78001180	PAINT PAVEMENT MARKING - LINE 24", WHITE	FOOT	52
X0301339	REMOVE EXISTING PARKING BLOCKS	EACH	6
X5011100	FOUNDATION REMOVAL	EACH	1
X7010216	TRAFFIC CONTROL & PROTECTION (SPECIAL)	L SUM	1
Z0013798	CONSTRUCTION LAYOUT	L SUM	1

Δ SPECIALTY ITEMS

COMMITMENTS

COMMITMENTS ARE NOT TO BE ALTERED WITHOUT THE WRITTEN APPROVAL OF ALL PARTIES TO WHICH THE COMMITMENT WAS MADE.

COMMITMENTS: (NONE)

UTILITY INFORMATION

ATT (FIBER/COMM) KENNETH COLWELL (630) 383-9249 KC1298@ATT.COM	COMCAST (FIBER/COMM) MARTHA GIERAS (224) 229-5862 MARTHA_GIERAS@COMCAST.COM	AMEREN ILLINOIS (ELECTRIC/GAS) NATHAN HILL (618) 301-5327 NHILL2@AMEREN.COM
STRATUS NETWORKS (FIBER/COMM) JOSEPH HUFFMAN (309) 678-9977 JHUFFMAN@STRATUSNET.COM	METAMORA TELEPHONE (FIBER/COMM) JIM SPRINGER (309) 367-4197, EXT. 140 JSPRINGER@CORP.MTCO.COM	ILLINOIS AMERICAN WATER - PEORIA (WATER) TRIP BARTON (309) 566-4148
ITV-3, INC. (FIBER/COMM) ENGINEERING OFFICE (309) 670-0400	BLUEBIRD NETWORK (FIBER/COMM) JACK COLES (816) 237-2137 JACK.COLES@BLUEBIRDNETWORK.COM	GREATER PEORIA SANITARY DISTRICT (SEWER) MARIA ZAVALA (309) 272-4844, EXT. 4844
		CITY OF PEORIA (PUBLIC WORKS) JANE GERDES (309) 494-8819 (309) 303-8661 JGERDES@PEORIAGOV.ORG

GENERAL NOTES

- ALL WORK SHALL BE DONE IN ACCORDANCE WITH THE STANDARD SPECIFICATIONS FOR ROAD AND BRIDGE CONSTRUCTION IN ILLINOIS, 2016 EDITION.
- WHERE SECTION OR SUBSECTION MONUMENTS ARE ENCOUNTERED, THE ENGINEER SHALL BE NOTIFIED BEFORE SUCH MONUMENTS ARE REMOVED. THE CONTRACTOR SHALL PROTECT AND CAREFULLY PRESERVE ALL PROPERTY MARKERS AND MONUMENTS UNTIL THE OWNER AND AUTHORIZED LICENSED LAND SURVEYOR HAS WITNESSED OR OTHERWISE REFERENCED THEIR LOCATION. PROPERTY MARKERS REMOVED OR DISTURBED BY THE CONTRACTOR SHALL BE REPLACED AT THE CONTRACTORS EXPENSE BY AN ILLINOIS LICENSED PROFESSIONAL LAND SURVEYOR.
- CONTRACTOR SHALL CHECK FOR LOCATIONS OF UTILITIES, DRAINAGE STRUCTURE OR OTHER FACILITIES IN THE CONSTRUCTION AREA. ANY DAMAGE TO SUCH FACILITIES DUE TO THE CONTRACTOR'S CARELESSNESS SHALL BE CORRECTED AT THE CONTRACTOR'S EXPENSE.

CONTRACTOR SHALL VERIFY ALL CRITICAL UTILITY CROSSING ELEVATIONS PRIOR TO CONSTRUCTION. THE ELEVATION OF THE PROPOSED IMPROVEMENTS MAY NEED TO BE ADJUSTED ACCORDINGLY.

ELEVATIONS SHOWN FOR COMMUNICATIONS, ELECTRIC, GAS AND WATER ARE BASED ONLY ON TYPICAL INSTALLATIONS. STORM SEWER ELEVATIONS HAVE BEEN ESTIMATED BASED ON SURVEY INFORMATION AND/OR INFORMATION PROVIDED BY THE UTILITY. SANITARY SERVICE LINES HAVE NOT BEEN SHOWN BUT ARE ANTICIPATED WHERE SANITARY SEWERS ARE PRESENT. LOCATIONS AND ELEVATIONS ARE VARIABLE.

OTHER UTILITIES OR UTILITY SERVICES MAY EXIST WHICH HAVE NOT BEEN SHOWN.
- ALL UTILITY COMPANIES SHALL BE CONTACTED FOR FIELD LOCATION OF UTILITY LINES BEFORE CONSTRUCTION BEGINS. THE CONTRACTOR IS RESPONSIBLE FOR VERIFYING THE LOCATION OF ALL UTILITIES IN THE CONSTRUCTION AREA. CONTACT ENGINEER WHEN DIRECT CONFLICT OCCURS. J.U.L.I.E. 800-892-0123
- ALL MATERIALS SHALL BE APPROVED BY THE CITY PEORIA, PRIOR TO CONSTRUCTION.
- THE NOMINAL THICKNESS FOR BASE AND SURFACE COURSES ARE SHOWN ON THE TYPICAL SECTIONS, STANDARDS, SCHEDULES OR SPECIAL DETAILS. THE CONSTRUCTED THICKNESS OF THE ABOVE ITEMS SHALL NOT BE LESS THAN 90% OF THE NOMINAL THICKNESS AT ANY LOCATION.
- COMPACTION OF EXISTING GROUND IN PLACE, FILL AND BACKFILL TO BE BY MECHANICAL MEANS TO ATTAIN THE FOLLOWING PERCENTAGES OF THE STANDARD LABORATORY DENSITIES AS MEASURED BY ASTM D-1557 FOR COHESIVE SOILS AND ASTM D-2049 FOR NON-COHESIVE SOILS. MOISTURE CONTENT SHALL BE NOT LESS THAN 2% BELOW OPTIMUM MOISTURE CONTENT.

AREA CONDITION	SUBGRADE	MAX. LIFT	COMPACTION
A. BACKFILL FOR EXCAVATED AREAS:			
BUILDING FOOTINGS, SLABS, SIDEWALKS, DRIVEWAYS AND PAVEMENT.	SUBGRADE	8"	95%
	SUBBASE	6"	95%
- SEEDING, FERTILIZING AND MULCHING SHALL BE COMPLETED IN ALL VEGETATIVE AREAS DISTURBED. FERTILIZING CONTENT AND APPLICATION RATES SHALL CONFORM TO STANDARD SPECIFICATIONS.
- CONTRACTOR SHALL BE RESPONSIBLE FOR REPLACING AND MAINTAINING ALL FENCES AND SIGNS REMOVED DURING CONSTRUCTION FOR PROPOSED IMPROVEMENT OR CONSTRUCTION SITE ACCESS. COST IS INCLUDED IN THE COST OF SIDEWALK.
- CONTRACTOR SHALL PROVIDE TEMPORARY WALKS, FENCING, BARRICADES OR OTHER PROTECTIVE MEASURES AS NECESSARY TO INSURE THE SAFETY OF THE PUBLIC TRAVERSING THE CONSTRUCTION SITE. EQUIPMENT STORAGE AREAS AND MATERIAL STOCKPILES SHALL BE LOCATED ON SITE PROVIDED BY THE CONTRACTOR WITH DUE REGARD TO LOCATION, APPEARANCE AND HAZARD POTENTIAL TO THE TRAVELING PUBLIC.
- ALL DEMOLISHED MATERIALS, CONSTRUCTION DEBRIS, AND EXCESS EARTHEN MATERIAL ARE TO BE REMOVED AND DISPOSED OF PER STANDARD SPECIFICATION OFF SITE, UNLESS NOTED OTHERWISE.
- ANY DAMAGE TO EXISTING ROAD SURFACES BY THE CONTRACTOR'S EQUIPMENT SHALL BE REPAIRED TO THE ORIGINAL CONDITION, OR BETTER, AND THE REPAIR SHALL BE ACCEPTED BY THE OWNER / ENGINEER.
- TREES OUTSIDE THE DESIGNATED LIMITS OF CONSTRUCTION SHALL NOT BE DISTURBED UNLESS OTHERWISE DIRECTED BY THE ENGINEER.
- 1-FT CONTOURS SHOWN FOR REFERENCE ONLY.

TRAFFIC CONTROL PLAN

- TRAFFIC CONTROL ON THIS PROJECT SHALL BE IN ACCORDANCE WITH ILLINOIS DEPT. OF TRANSPORTATION HIGHWAY STANDARDS 701006-05, 701301-04, 701306-04, 701311-03, 701801-06, AND 701901-08 AND THE MANUAL OF UNIFORM TRAFFIC CONTROL DEVICES, LATEST EDITION.
- ALL TRAFFIC CONTROL DEVICES SHALL BE FURNISHED, ERECTED, MAINTAINED AND REMOVED BY THE CONTRACTOR.
- WHERE POSSIBLE, ALL POST MOUNTED SIGNS SHALL BE PLACED AT LEAST 2 FEET BEYOND THE CURB OR EDGE OF SHOULDER.
- THE LOCATION FOR EQUIPMENT STORAGE BY THE CONTRACTOR DURING NON-WORKING HOURS SHALL BE AS APPROVED BY THE CITY.
- PROPOSED SIGN SPACING MAY BE MODIFIED, AS APPROVED BY THE CITY TO MEET FIELD RESTRICTIONS OR TO PREVENT OBSTRUCTION OF THE MOTORIST'S VIEW OF PERMANENT SIGNAGE.
- PERMANENT SIGNING CONVEYING A MESSAGE CONTRARY TO THE MESSAGE OF THE TEMPORARY SIGNING AND NOT APPLICABLE TO THE WORKING CONDITIONS SHALL BE REMOVED OR COVERED BY THE CONTRACTOR WHEN APPROVED BY THE CITY.
- PROPOSED CHANGES TO THE TRAFFIC CONTROL PLAN SHALL BE APPROVED BY THE CITY BEFORE CHANGES ARE MADE.
- LANE CLOSURES SHALL BE APPROVED BY THE CITY PRIOR TO ACTUAL CLOSURE.
- SIDEWALK CLOSURES SHALL BE APPROVED BY THE CITY PRIOR TO ACTUAL CLOSURE. EXISTING SIDEWALK SHALL BE CLOSED AT EACH END OF THE PROJECT (TERMINI) PRIOR TO BEGINNING OF CONSTRUCTION OPERATIONS.
- PEDESTRIAN DETOUR ROUTES SHALL BE APPROVED THE CITY.

LEGEND

EXISTING	PROPOSED	
---	---	SIDEWALK
		DETECTABLE WARNING
		LANDING AND/OR TURNING SPACE
-----	-----	EDGE OF PAVEMENT
=====	=====	CURB AND GUTTER
---W---	---W---	WATER MAIN
---W---	---W---	WATER SERVICE
---G---	---G---	GAS LINE
---OHE---	---	OVERHEAD ELECTRIC
---UGE---	---	UNDERGROUND ELECTRIC
---FO---	---	FIBER OPTIC
---C---	---	COMMUNICATION LINE
---	---	STORM SEWER
---	---	SANITARY SEWER
		WATER VALVE
		FIRE HYDRANT
		CURB STOP
		SIGN
		MANHOLE / STORM WATER INLET
		GAS VALVE
		TELEPHONE PEDESTAL
		CABLE TV PEDESTAL
		UTILITY POLE
		LIGHT POLE
		GUY WIRE
---601---		CONTOURS
---600---		INDEX CONTOURS

HIGHWAY STANDARDS

280001-07	TEMPORARY EROSION CONTROL SYSTEMS
420001-09	PAVEMENT JOINTS
424001-11	PERPENDICULAR CURB RAMPS FOR SIDEWALKS
542301-03	PRECAST REINFORCED CONCRETE FLARED END SECTION
602301-04	INLET - TYPE A
606001-07	CONCRETE CURB TYPE B AND CONCRETE CURB AND GUTTER
701006-05	OFF-RD OPERATIONS, 2L, 2W, 15' TO 24" FROM PAVEMENT EDGE.
701301-04	LANE CLOSURE, 2L, 2W, SHORT TIME OPERATIONS
701306-04	LANE CLOSURE, 2L, 2W, SLOW MOVING OPERATIONS DAY ONLY, FOR SPEEDS >= 45 MPH
701311-03	LANE CLOSURE, 2L, 2W, MOVING OPERATIONS DAY ONLY
701801-06	SIDEWALK, CORNER OR CROSSWALK CLOSURE
701901-08	TRAFFIC CONTROL DEVICES
780001-D4	TYPICAL PAVEMENT MARKINGS

PIPE CULVERTS, CLASS A, TYPE 1

NO.	USFL				DSFL				PIPE SLOPE	PIPE LENGTH (FOOT)		54213660 PRC FLAR END SEC 15 (EACH)	20900110 POR. GRAN. BCKFL. (CY)
	STA.	O/S	ELEV.	DESC.	STA.	O/S	ELEV.	DESC.		542A0217 (12")	542A0220 (15")		
P1	9+12.80	3.0 LT.	732.93	S1	9+15.96	9.6 RT.	732.80	INLET 2713	1.0%	-	13	-	4.7
P2	12+06.30	5.4 LT.	742.31	S2	11+83.20	26.9 ft.	735.00	FES*	20.9%	-	35	1	5.5
P3	14+20.60	2.8 LT.	753.74	S4	12+77.90	4.0 LT.	745.76	S3	5.6%	143	-	-	22.6
TOTAL										143	48	1	32.8
USE										143	48	1	33

*FES: FLARED END SECTION

INLETS, TYPE A

NO.	LOCATION		STRUCTURE TYPE	60236200 (EACH)	TOP ELEV.	INV. ELEV.	INV. DESCRIPTION	BOTTOM WELL ELEV.	20900110 POR. GRAN. BCKFL (CY)
	STATION	O/S							
S1	9+12.80	3.0 LT.	INLETS, TYPE A, TYPE 8 GRATE	1	736.05	732.93	P1	732.83	1.5
S2	12+06.30	5.4 LT.	INLETS, TYPE A, TYPE 8 GRATE	1	744.24	742.41	EX. 15" RCP	742.21	1.0
						742.31	P2		
S3	12+77.90	4.0 LT.	INLETS, TYPE A, TYPE 8 GRATE	1	747.51	745.76	P3	745.56	1.0
						745.66	EX. 15" RCP		
S4	14+20.60	2.8 LT.	INLETS, TYPE A, TYPE 8 GRATE	1	755.59	753.84	EX. 12" RCP	753.64	1.0
						753.74	P3		
TOTAL				4	-	-	-	-	4.5
USE				4	-	-	-	-	5

APPLICATION RATES:

NITROGEN FERTILIZER = 90 LB/ACRE
 PHOSPHOROUS FERTILIZER = 90 LB/ACRE
 POTASSIUM FERTILIZER = 90 LB/ACRE
 TEMP. EROSION CONTROL SEEDING = 100 LB/ACRE

EROSION CONTROL

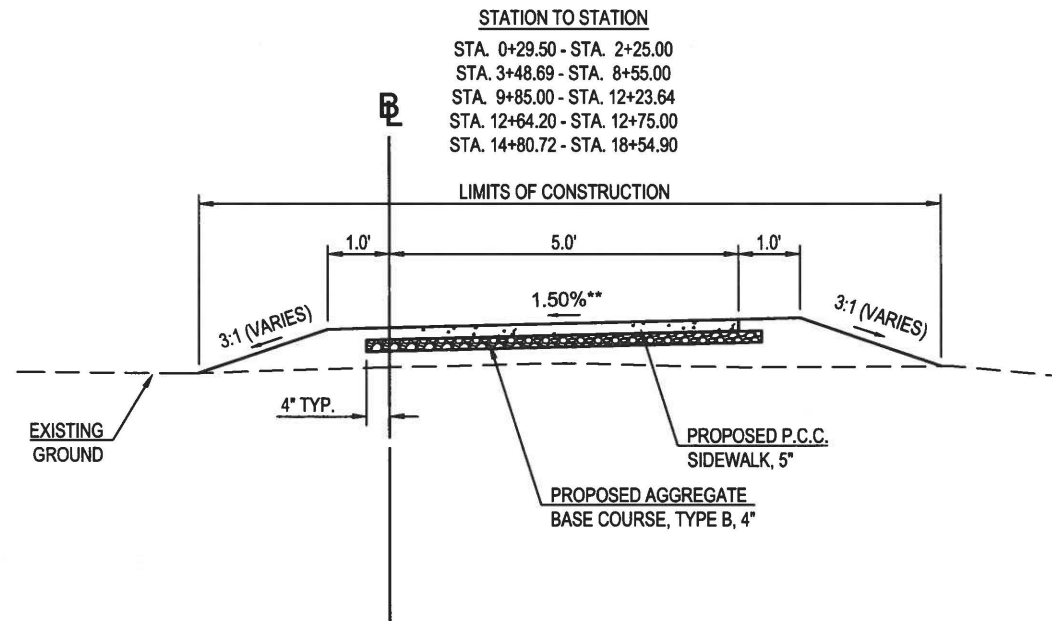
LOCATION			25000100 SEEDING, CLASS 1	25000400 NITROGEN FERTILIZER NUTRIENT	25000500 PHOSPHOROUS FERTILIZER NUTRIENT	25000600 POTASSIUM FERTILIZER NUTRIENT	25100115 MULCH, METHOD 2	28000250 TEMP. EROSION CONTROL SEEDING	28000400 PERIMETER EROSION BARRIER	28000500 INLET AND PIPE PROTECTION	28100107 STONE RIPRAP CLASS A4	28200200 FILTER FABRIC
STA. FROM	STA. TO	OFFSET	ACRE	POUND	POUND	POUND	ACRE	POUND	FOOT	EACH	SQ YD	SQ YD
+29.50	2+97.20	-	0.151	13.6	13.6	13.6	0.151	15.1	267.0	-	-	-
3+48.69	12+23.64	-	0.484	43.6	43.6	43.6	0.484	48.4	874.0	-	-	-
12+64.20	14+42.81	-	0.079	7.1	7.1	7.1	0.079	7.9	179.0	-	-	-
14+80.72	18+54.90	-	0.102	9.2	9.2	9.2	0.102	10.2	375.0	-	-	-
2+78.60	-	11.8 RT.	-	-	-	-	-	-	-	1.0	-	-
9+12.80	-	3.0 LT.	-	-	-	-	-	-	-	1.0	-	-
9+16.00	-	9.6 RT.	-	-	-	-	-	-	-	1.0	-	-
11+81.50	-	29.3 RT.	-	-	-	-	-	-	-	1.0	-	-
11+82.30	-	28.10 RT.	-	-	-	-	-	-	-	-	6.7	6.7
12+06.30	-	5.4 LT.	-	-	-	-	-	-	-	1.0	-	-
12+77.90	-	4.0 LT.	-	-	-	-	-	-	-	1.0	-	-
14+20.60	-	2.8 LT.	-	-	-	-	-	-	-	1.0	-	-
TOTAL			0.82	73.5	73.5	73.5	0.82	81.7	1695.0	7.0	6.7	6.7
USE			0.9	81	81	81	0.9	90	1695	7	6.7	6.7

EARTHWORK					
LOCATION		20200100 EARTH EXCAVATION	EARTH EXCAVATION (INCL. 25% SHRINKAGE)	FILL	20400800 FURNISHED EXCAVATION
STA. FROM - STA. TO		CU YD	CU YD	CU YD	CU YD
0+29.50	2+97.20	55.7	41.8	6.9	-34.9
3+48.69	12+23.64	30.70	23.1	304.1	281.0
12+64.20	14+42.81	18.4	13.8	93.8	80.0
14+80.72	18+54.90	142.5	106.9	1.9	-105.0
TOTAL		247.30	185.60	406.70	221.10
USE		250.0	185.0	405.0	220.0

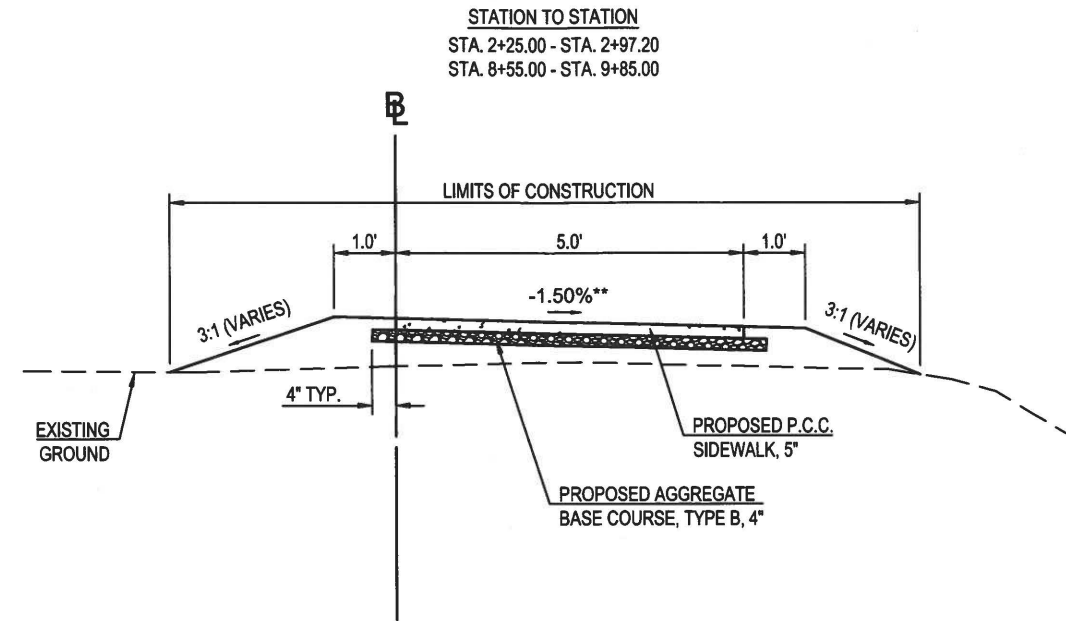
PAVEMENT MARKING		
LOCATION		78001180 PAINT PAVEMENT MARKING LINE 24" WHITE SOLID
STA. FROM	STA. TO	FOOT
12+23.64	12+64.20	52.0
TOTAL		52.0
USE		52.0

F.A. RTE.	SECTION	COUNTY	TOTAL SHEETS	SHEET NO.
---	19-00385-00-SW	PEORIA	20	6
ILLINOIS	CONTRACT NO. 89786	TYPICAL SECTIONS		

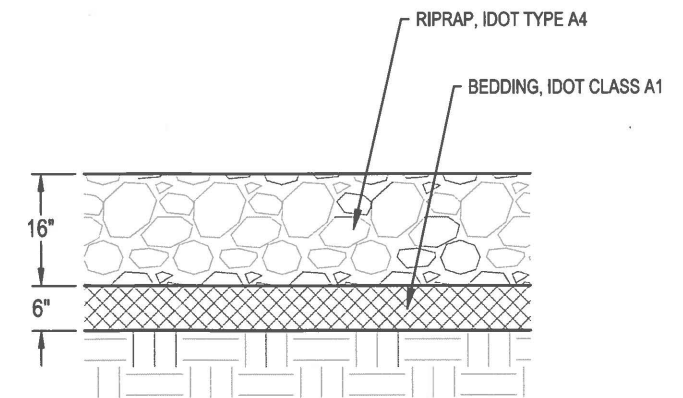
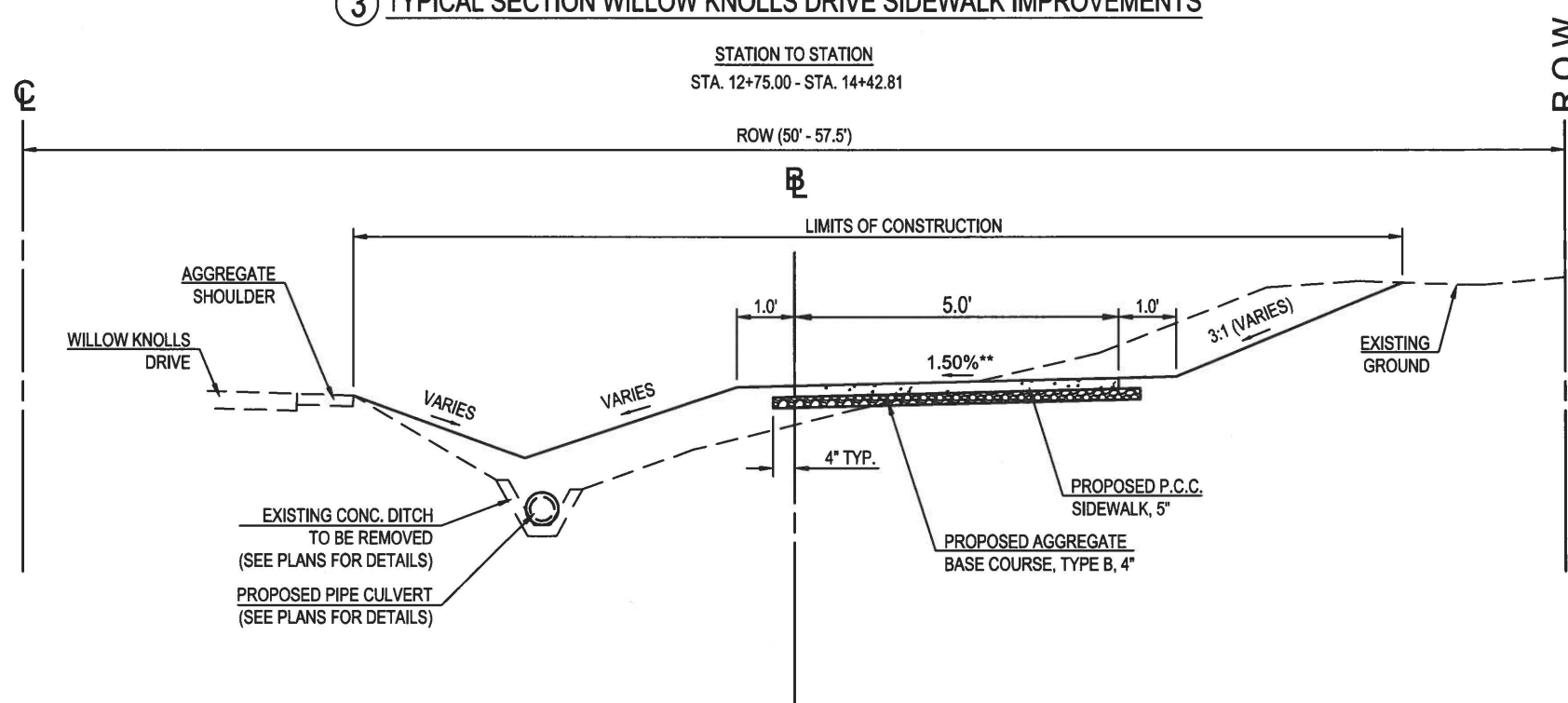
① TYPICAL SECTION WILLOW KNOLLS DRIVE SIDEWALK IMPROVEMENTS



② TYPICAL SECTION WILLOW KNOLLS DRIVE SIDEWALK IMPROVEMENTS



③ TYPICAL SECTION WILLOW KNOLLS DRIVE SIDEWALK IMPROVEMENTS

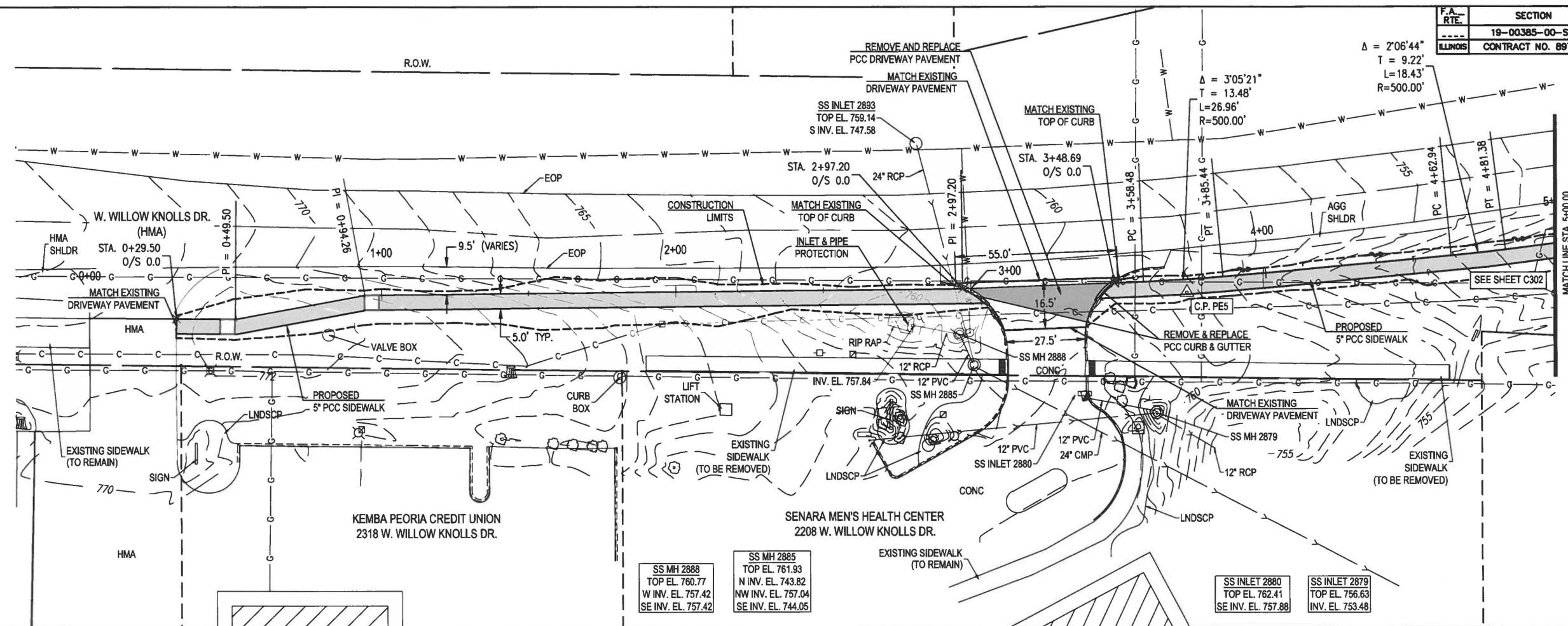


RIPRAP DETAIL

*SIDEWALK OMISSION
 STA. 2+97.20 TO STA. 3+48.69 (SENARA MEN'S HEALTH CENTER ENT.)
 STA. 12+23.64 TO STA. 12+64.20 (FLEMING LANE)
 STA. 14+42.81 TO STA. 14+80.72 (YMCA ENT.)

**2.0% MAX SIDEWALK CROSS SLOPE

F.A. RTE.	SECTION	COUNTY	TOTAL SHEETS	SHEET NO.
19-00385-00-SW		PEORIA	20	7
ILLINOIS	CONTRACT NO. 89786			PLAN AND PROFILE



CONTROL POINT "PE5"
 N: 1497085.422
 E: 2446117.429
 EL. 759.181

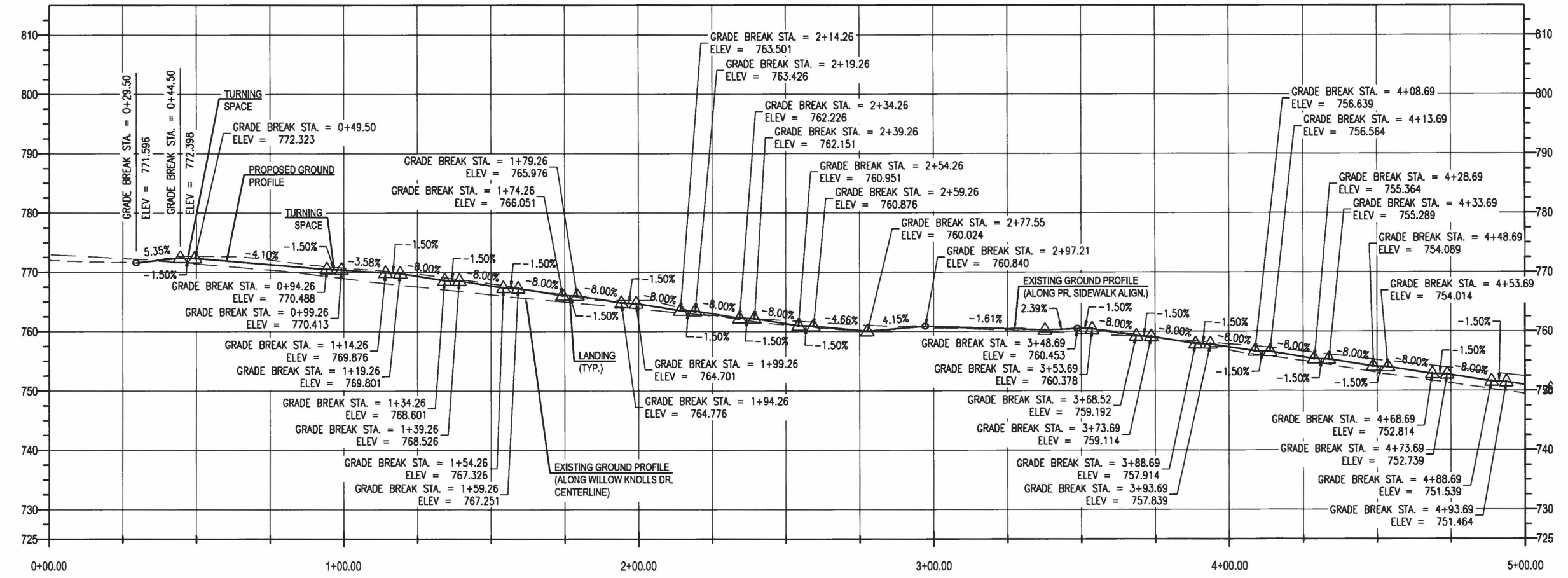
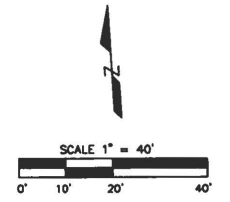
CONTROL POINT "PE6"
 (NOT SHOWN)
 N: 1497145.671
 E: 2445607.025
 EL. 774.738

SS MH 2888
 TOP EL. 760.77
 W INV. EL. 757.42
 SE INV. EL. 757.42

SS MH 2885
 TOP EL. 761.93
 N INV. EL. 743.82
 NW INV. EL. 757.04
 SE INV. EL. 744.05

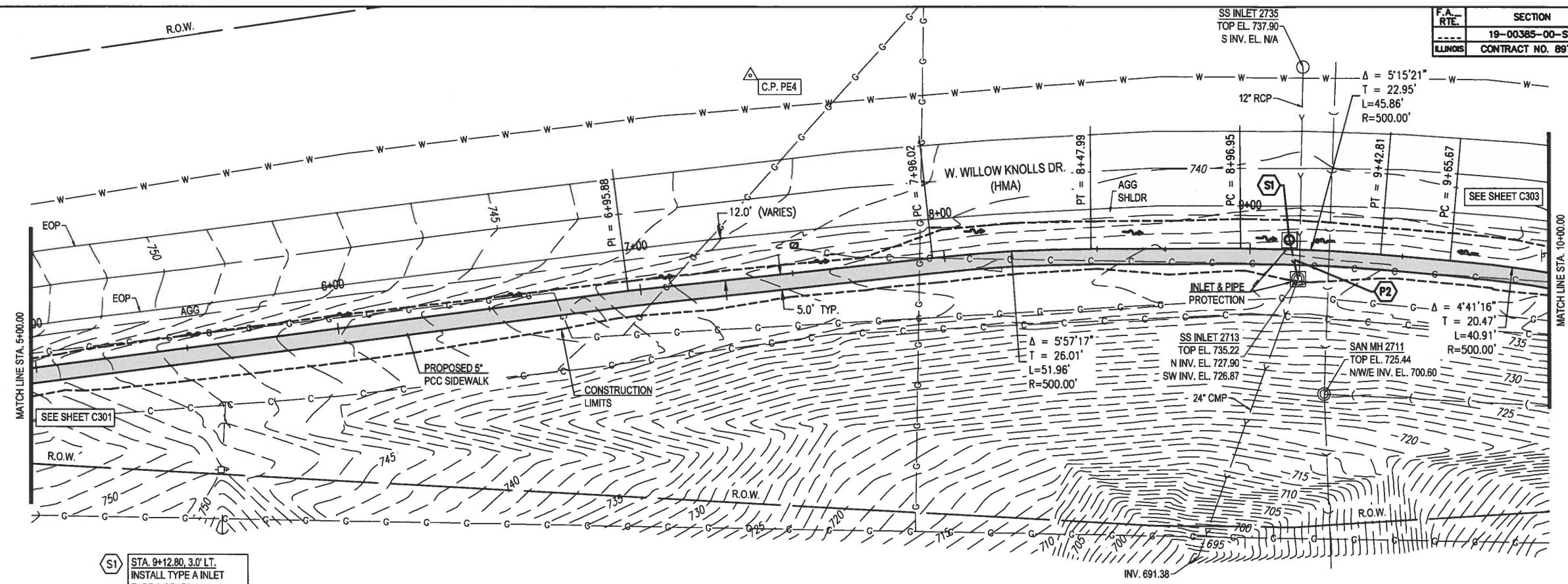
SS INLET 2880
 TOP EL. 762.41
 SE INV. EL. 757.88

SS INLET 2879
 TOP EL. 756.63
 INV. EL. 753.48



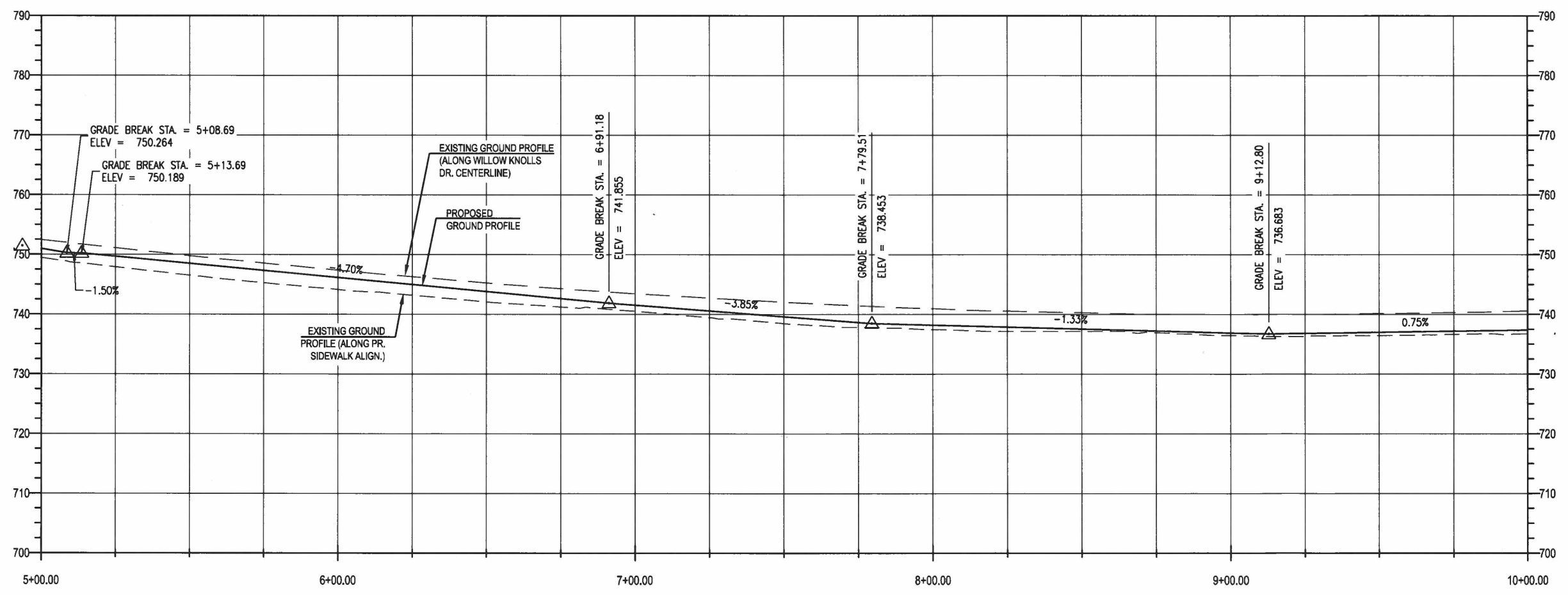
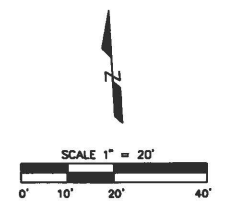
APR 28, 2021 11:41 AM ZLEACH
 C:\JONES\2018\1211802\CITY OF PEORIA ENGINEERING RETAINER\WORK ORDER 2\DRAWINGS\SHEET\WILLOW KNOLLS\C301_1211802.DWG

F.A. RTE.	SECTION	COUNTY	TOTAL SHEETS	SHEET NO.
19-00385-00-SW		PEORIA	20	8
ILLINOIS	CONTRACT NO. 89786			PLAN AND PROFILE



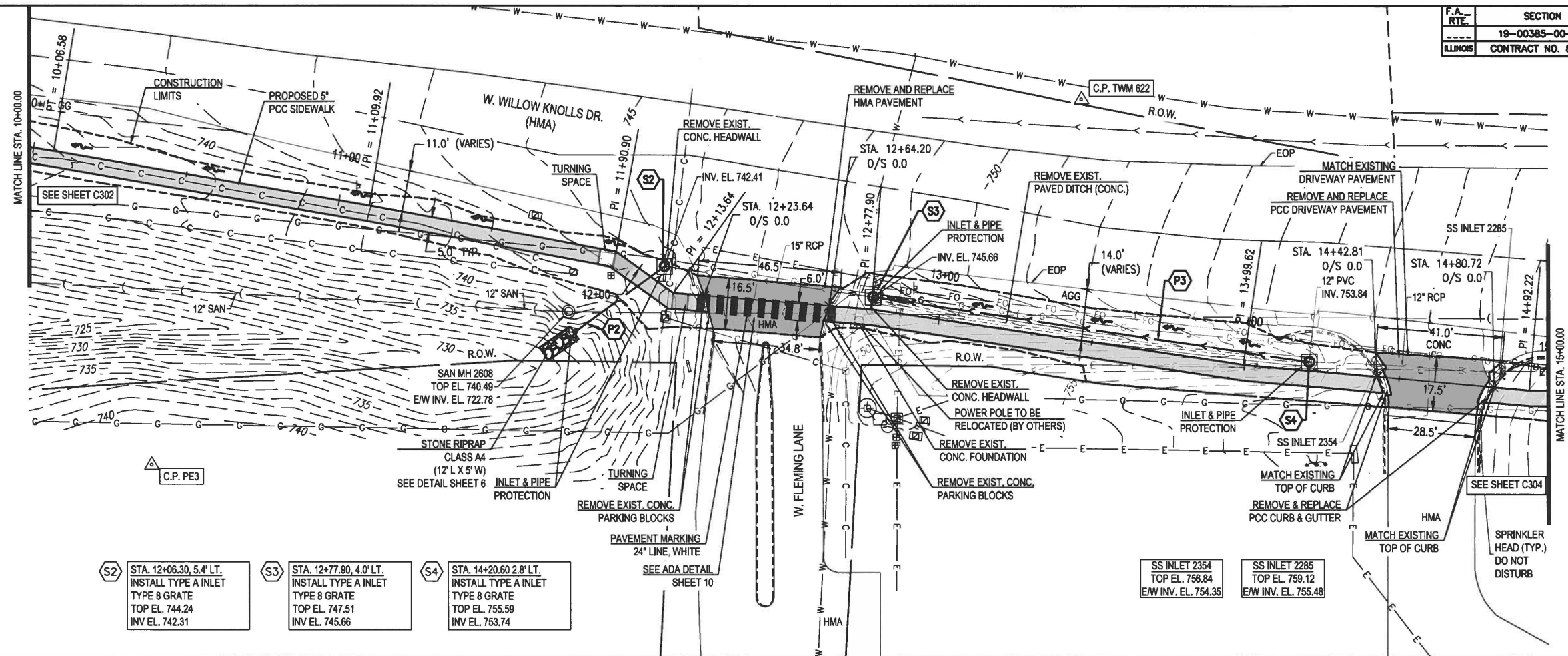
CONTROL POINT "PE4"
 N: 1497197.418
 E: 2446477.968
 EL. 743.203

S1 STA. 9+12.80, 3.0' LT.
 INSTALL TYPE A INLET
 TYPE 8 GRATE
 TOP EL. 736.05
 INV EL. 732.93



APR 28, 2021 11:41 AM ZLEACH
 P:\085\2018\121.1802\CITY OF PEORIA ENGINEERING RETAINERS\WORK ORDER 2\DRAWINGS\WORK ORDER 2\DRAWINGS\SHEET\WILLOW_KNOLLS\C301_121.1802.02A.DWG

F.A. RTE.	SECTION	COUNTY	TOTAL SHEETS	SHEET NO.
19-00385-00-SW	PEORIA	20	9	
CONTRACT NO. 89786			PLAN AND PROFILE	

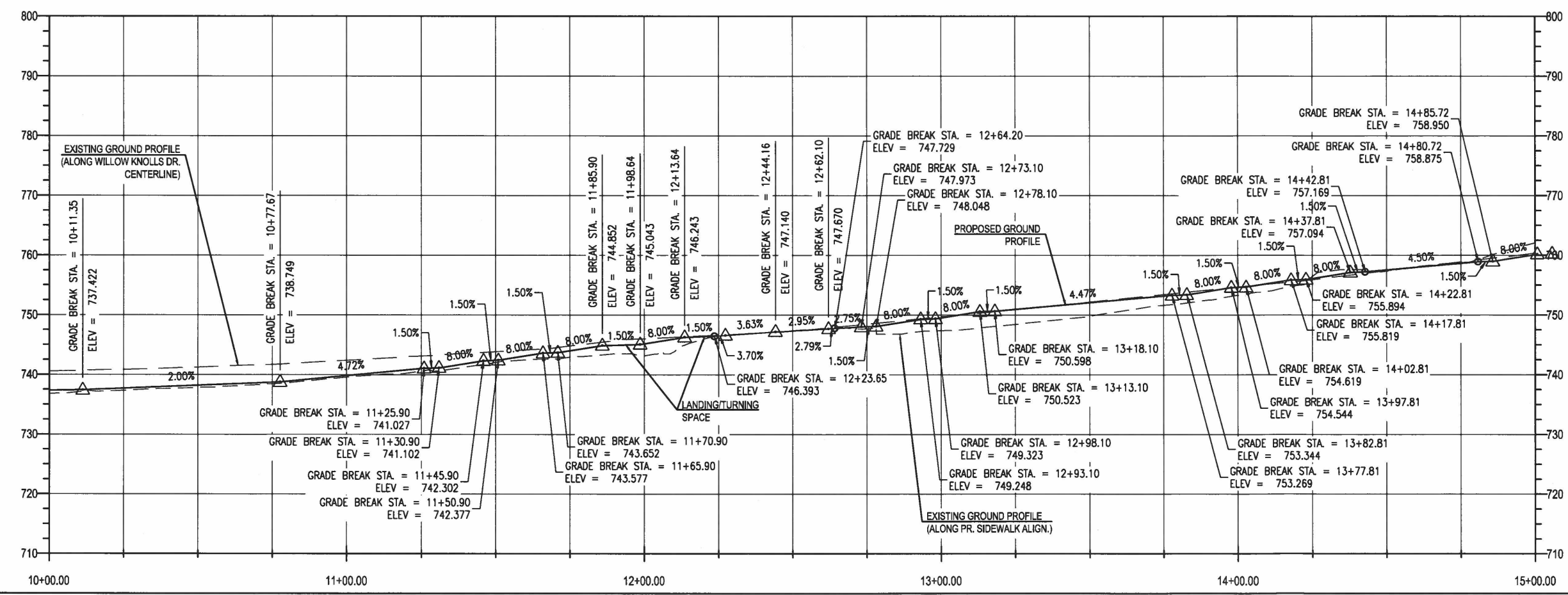
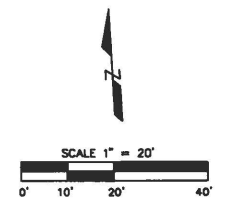


CONTROL POINT "TWM622"
 N: 1497148.584
 E: 2447079.643
 EL. 750.540

CONTROL POINT "PE3"
 N: 1497031.065
 E: 2446778.898
 EL. 742.450

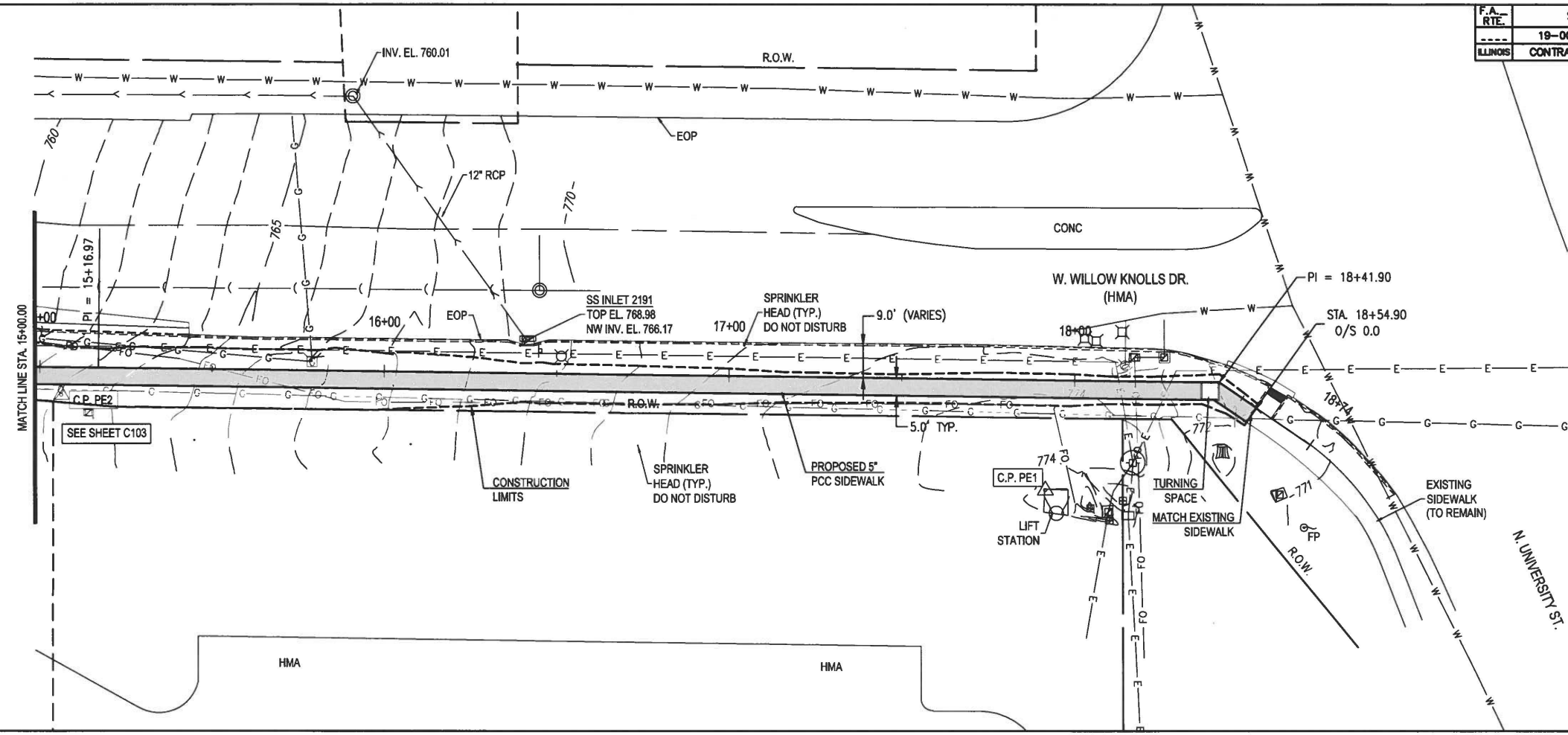
- S2 STA. 12+06.30, 5.4' LT. INSTALL TYPE A INLET TYPE 8 GRATE TOP EL. 744.24 INV EL. 742.31
- S3 STA. 12+77.90, 4.0' LT. INSTALL TYPE A INLET TYPE 8 GRATE TOP EL. 747.51 INV EL. 745.66
- S4 STA. 14+20.60, 2.8' LT. INSTALL TYPE A INLET TYPE 8 GRATE TOP EL. 755.59 INV EL. 753.74

- SS INLET 2354 TOP EL. 756.84 EW INV. EL. 754.35
- SS INLET 2285 TOP EL. 758.12 EW INV. EL. 755.48



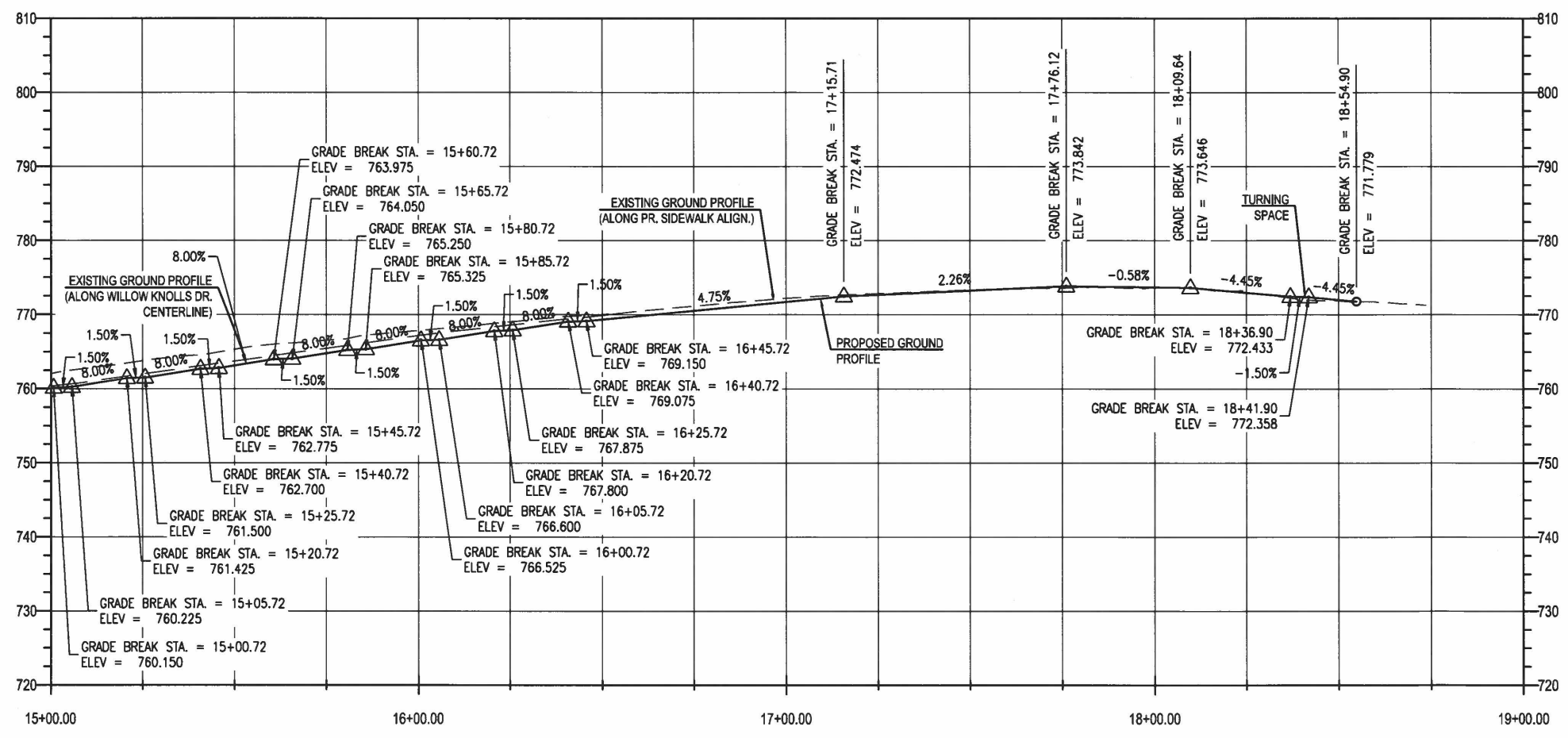
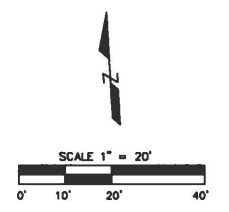
APR 28, 2021 11:41 AM ZLEACH P:\085\2018\1211802\CITY OF PEORIA ENGINEERING RETAINER\WORK ORDER 2\DRAWINGS\SHEDD\WILLOW_KNOLLS\C301_121.1802.02A.DWG

F.A. RTE.	SECTION	COUNTY	TOTAL SHEETS	SHEET NO.
ILLINOIS	19-00385-00-SW	PEORIA	20	10
CONTRACT NO. 89786		PLAN AND PROFILE		



CONTROL POINT "PE1"
 N: 1497019.434
 E: 2447523.155
 EL. 774.170

CONTROL POINT "PE2"
 N: 1497046.871
 E: 2447237.983
 EL. 763.228

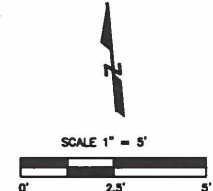
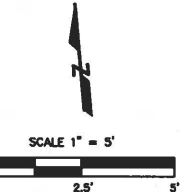
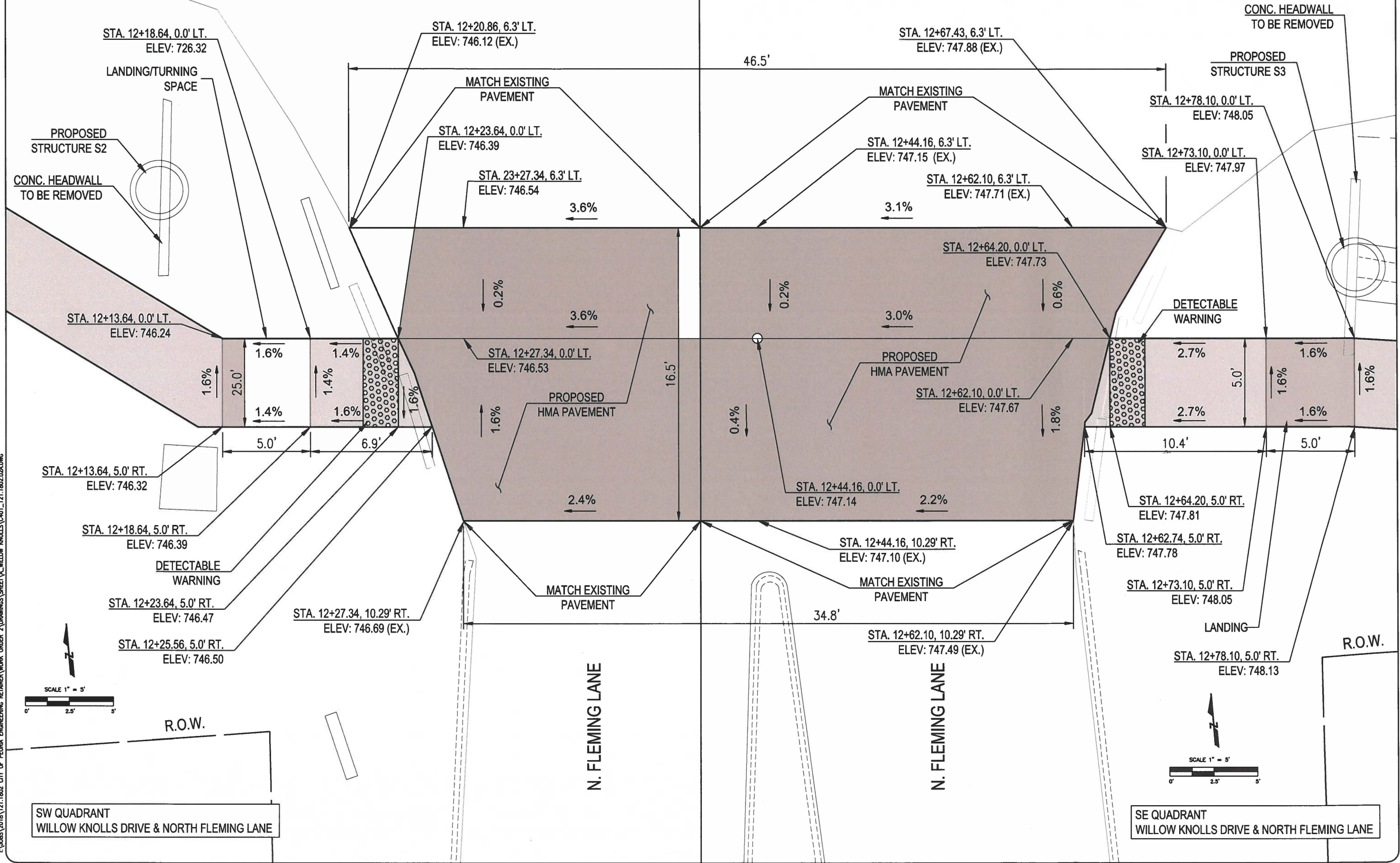


APR. 28, 2021 11:42 AM ZLEACH
 S:\JOBS\2018\121.1802.CITY OF PEORIA ENGINEERING RETAINER\WORK ORDER 2\DRAWINGS\SHEET\WILLOW_KNOLLS\C301_121.1802.02A.DWG

F.A. RTE.	SECTION	COUNTY	TOTAL SHEETS	SHEET NO.
---	19-00385-00-SW	PEORIA	16	11
ILLINOIS	CONTRACT NO. 89786		ADA DETAILS	

WILLOW KNOLLS DRIVE

WILLOW KNOLLS DRIVE



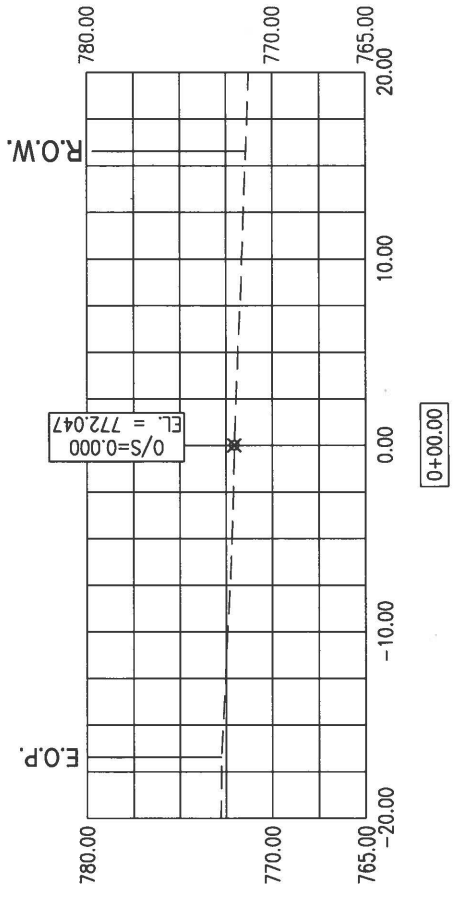
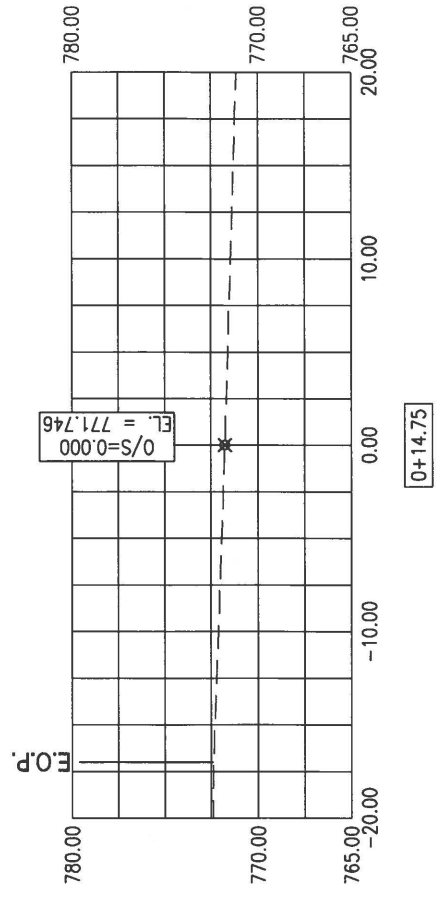
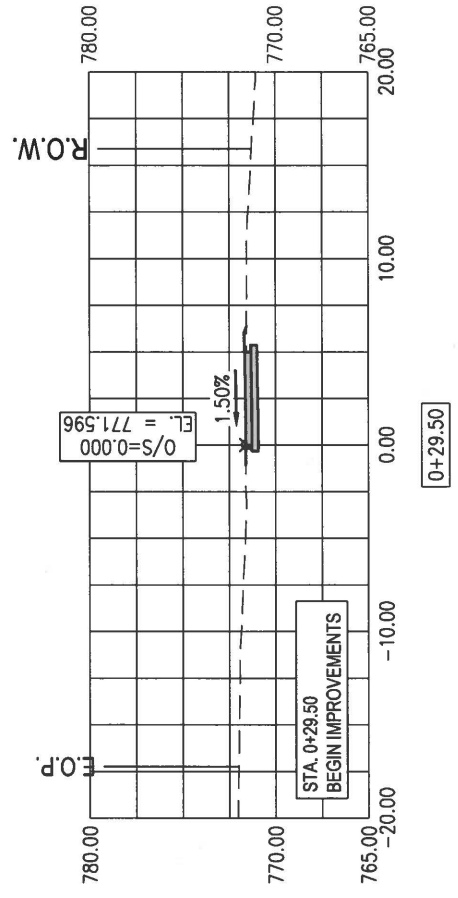
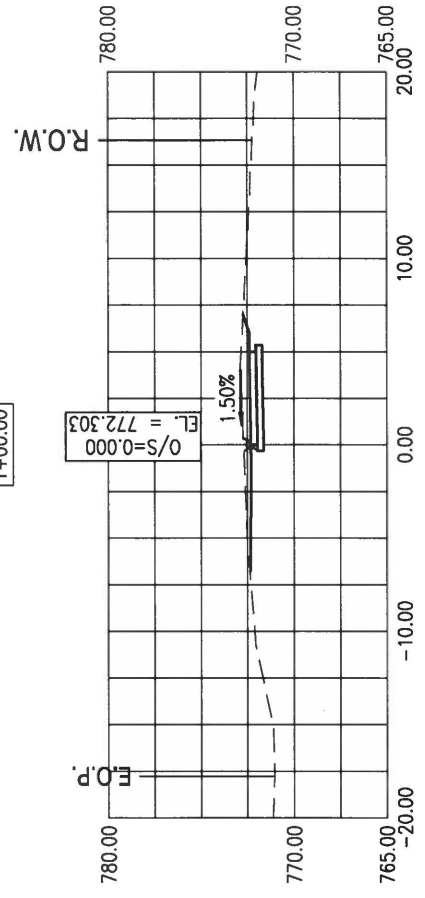
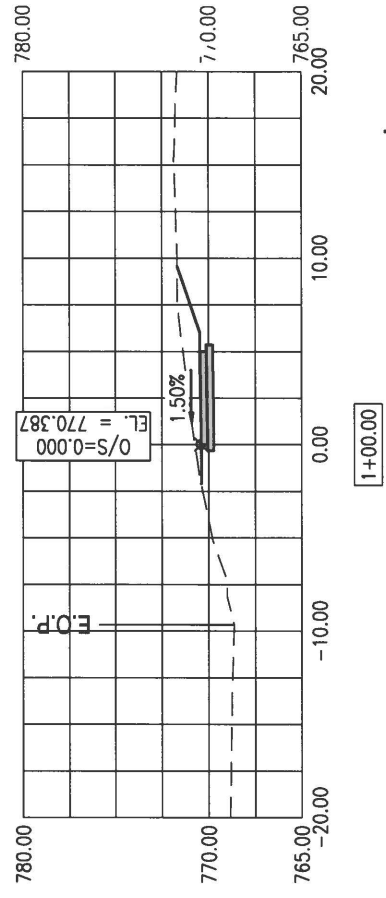
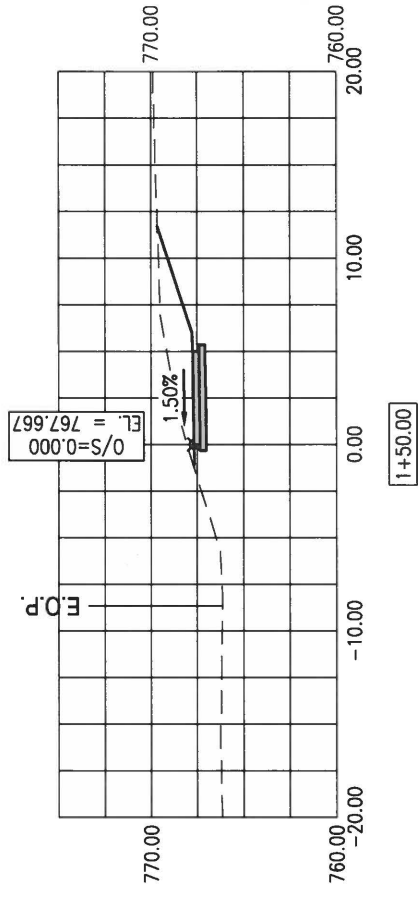
SW QUADRANT
WILLOW KNOLLS DRIVE & NORTH FLEMING LANE

SE QUADRANT
WILLOW KNOLLS DRIVE & NORTH FLEMING LANE

APR 28, 2021 10:36 AM ZLEACH I:\JOBS\2018\121.1802.CITY OF PEORIA ENGINEERING RETAINERS\WORK ORDER 2\DRAWINGS\WORK ORDER 2\DRAWINGS\SHEET\WILLOW KNOLLS\C401_121.1802.02A.DWG

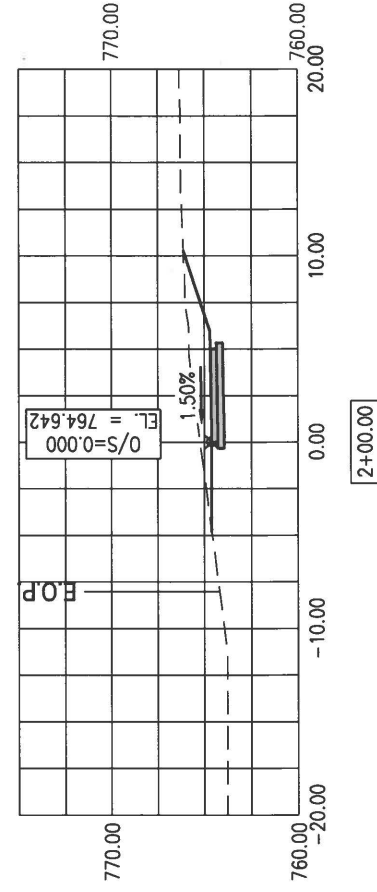
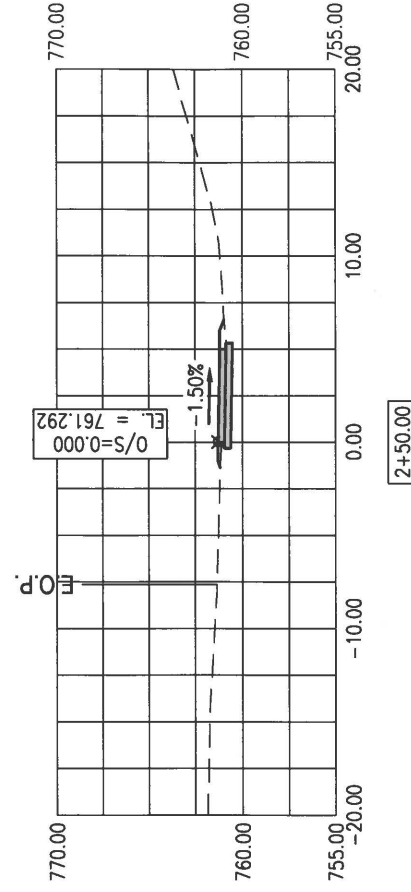
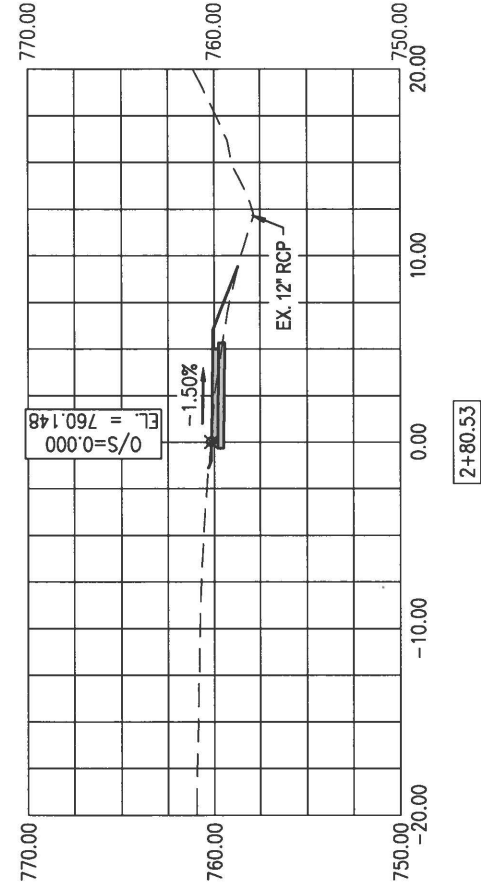
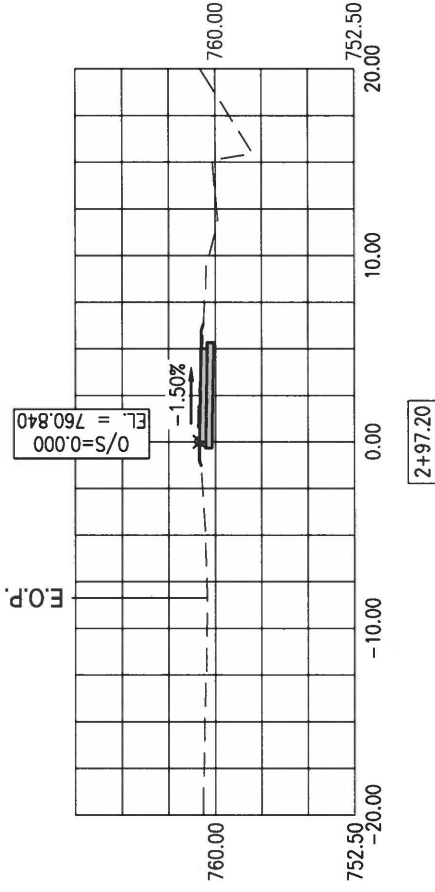
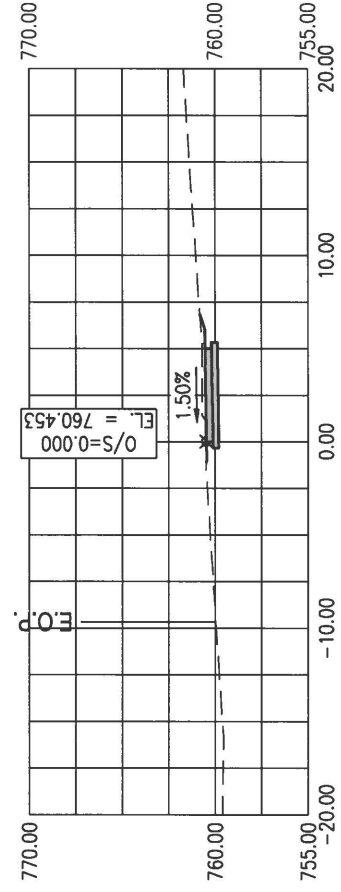
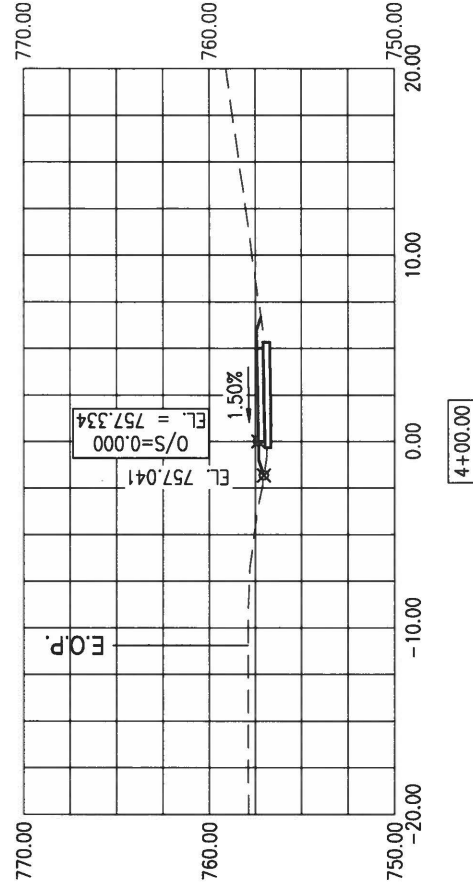
F.A. RTE.	SECTION	COUNTY	TOTAL SHEETS	SHEET NO.
---	19-00385-00-SW	PEORIA	20	12
ILLINOIS	CONTRACT NO. 89786		CROSS SECTIONS	

FULL SIZE: 1" = 5' H&V
 HALF SIZE: 1" = 10' H&V



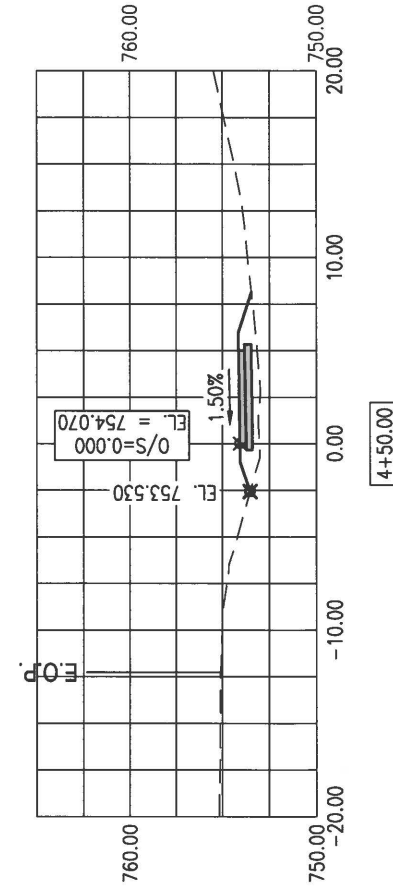
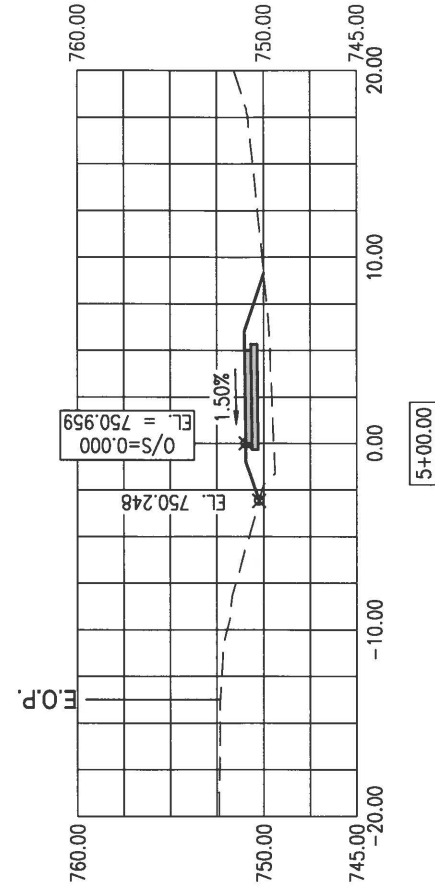
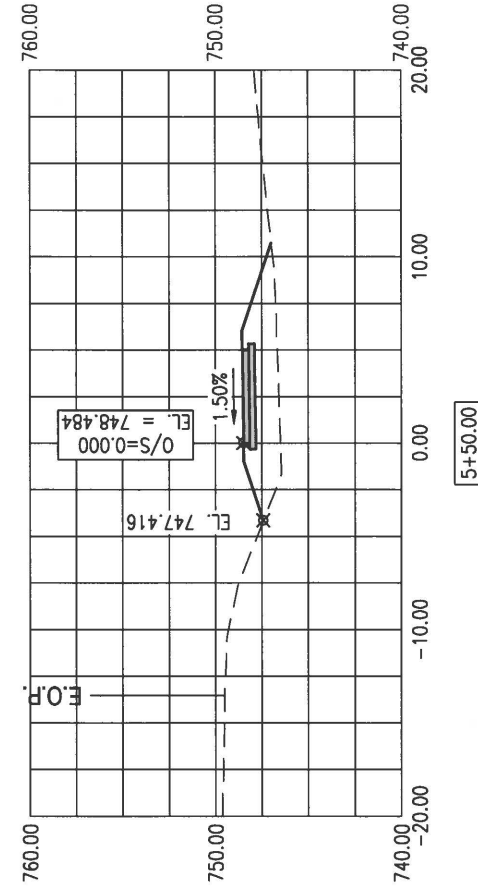
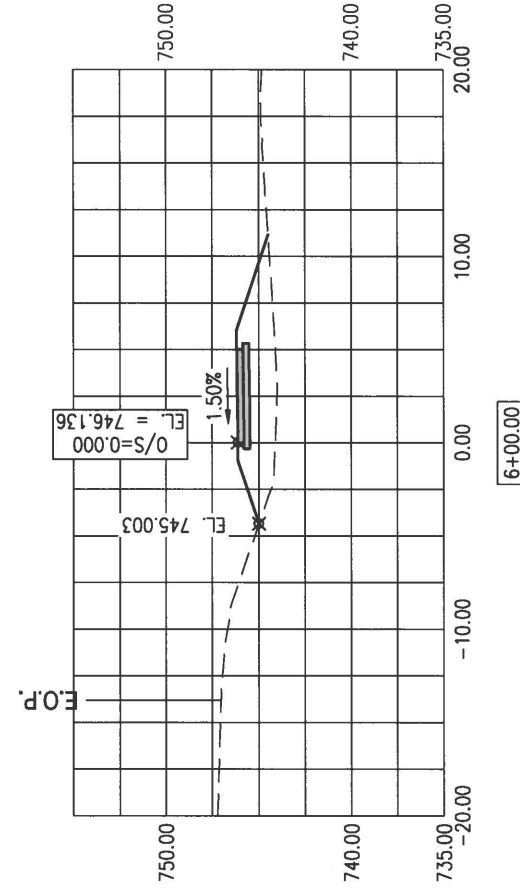
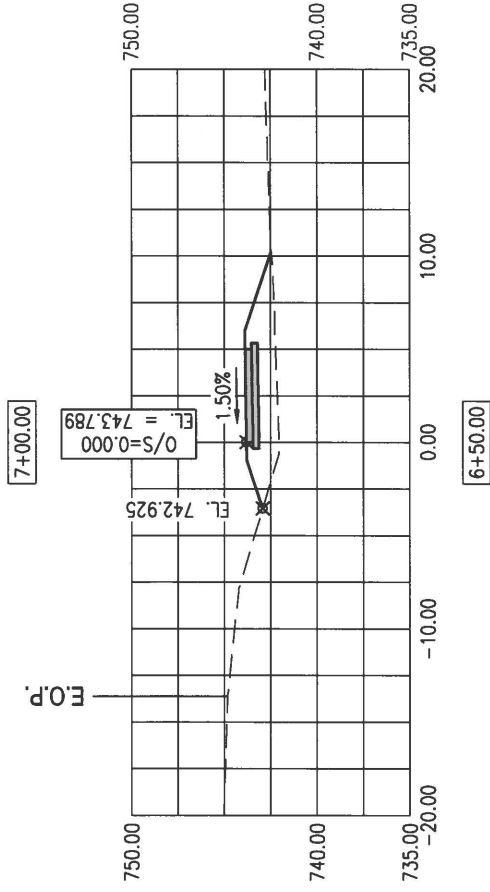
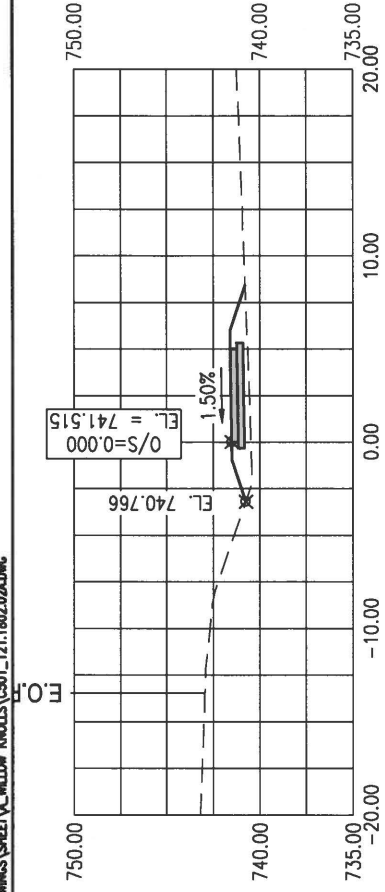
F.A. RTE.	SECTION	COUNTY	TOTAL SHEETS	SHEET NO.
---	19-00385-00-SW	PEORIA	20	13
ILLINOIS	CONTRACT NO. 89786	CROSS SECTIONS		

FULL SIZE: 1" = 5' H&V
 HALF SIZE: 1" = 10' H&V



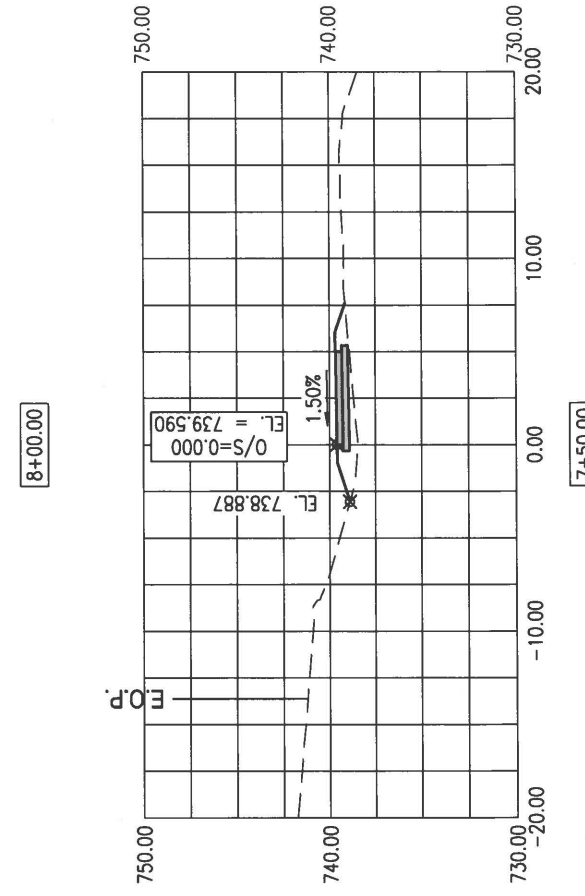
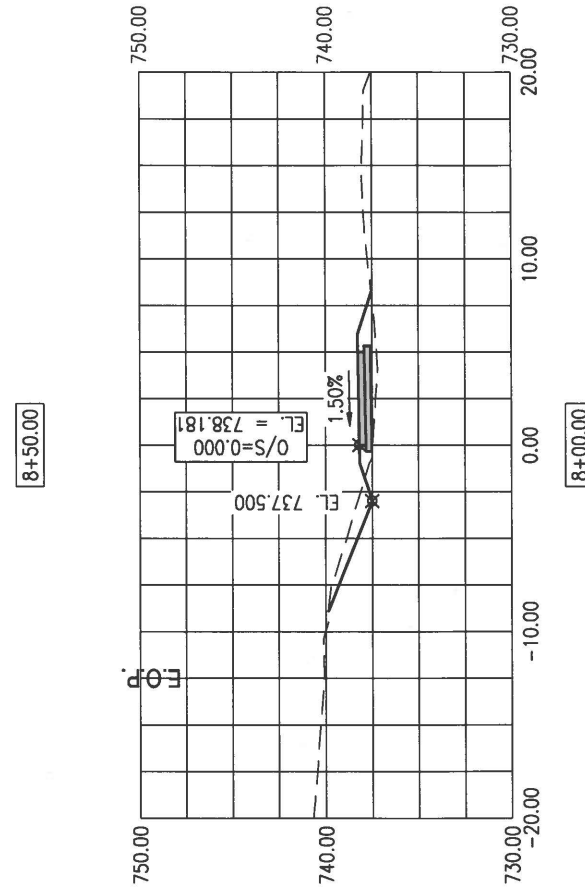
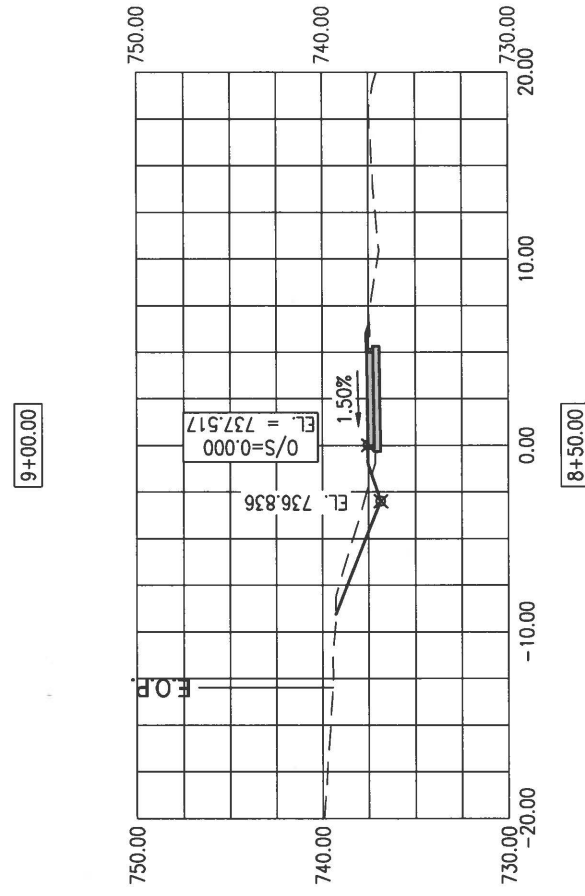
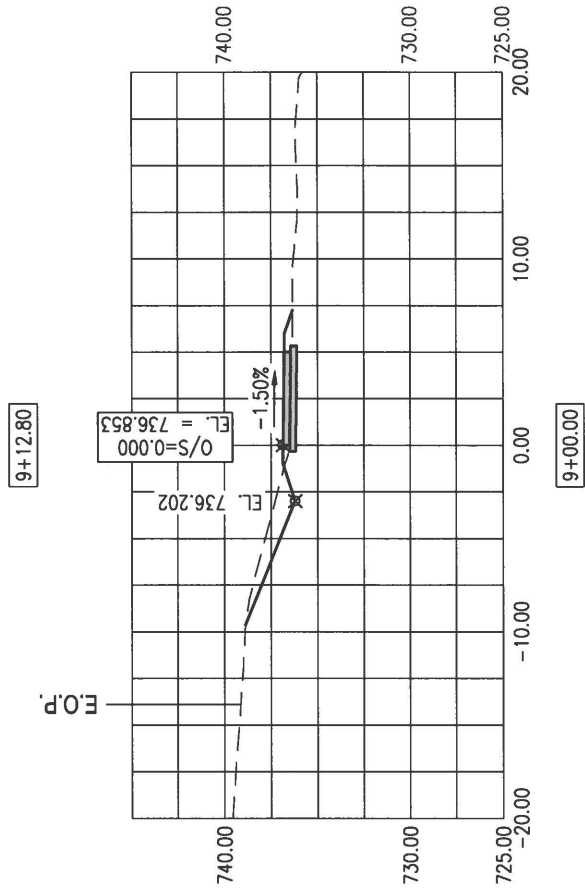
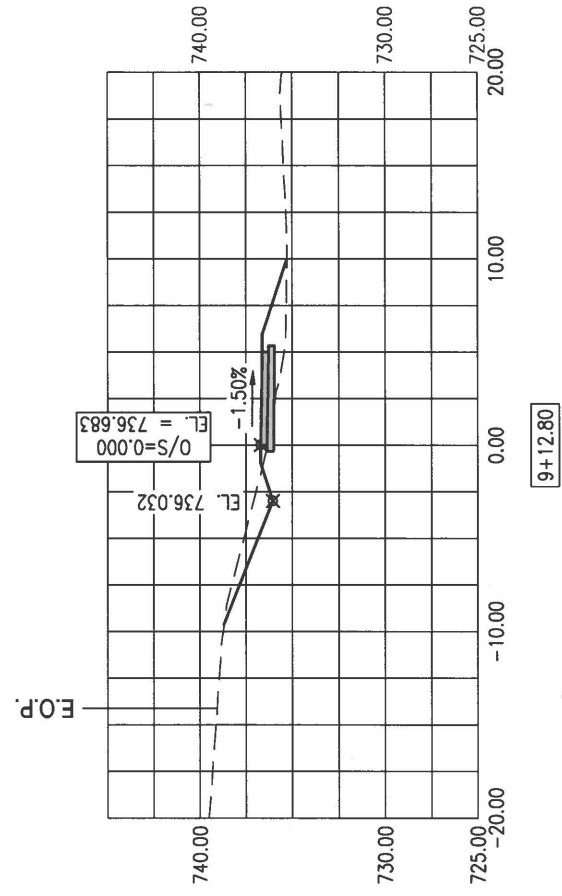
F.A. RTE.	SECTION	COUNTY	TOTAL SHEETS	SHEET NO.
---	19-00385-00-SW	PEORIA	20	14
ILLINOIS	CONTRACT NO. 89786		CROSS SECTIONS	

FULL SIZE: 1" = 5' H&V
 HALF SIZE: 1" = 10' H&V



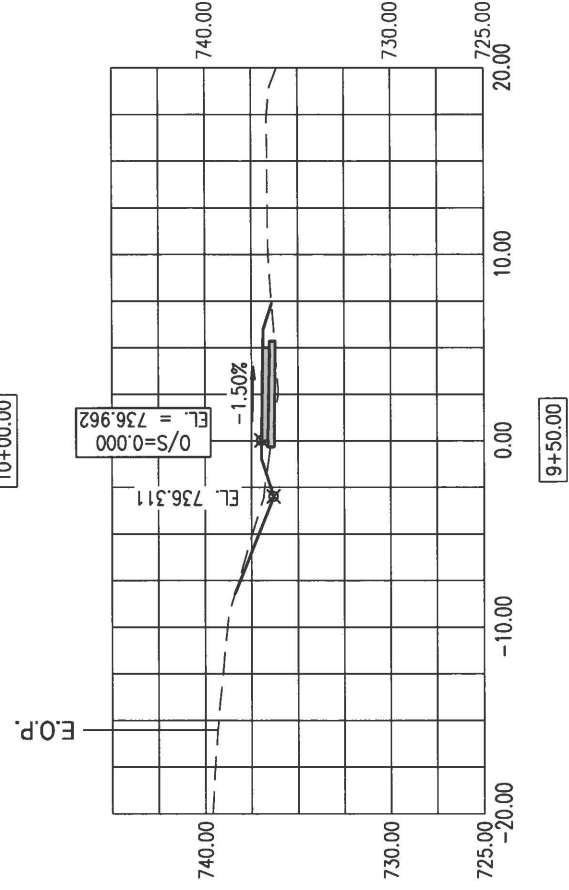
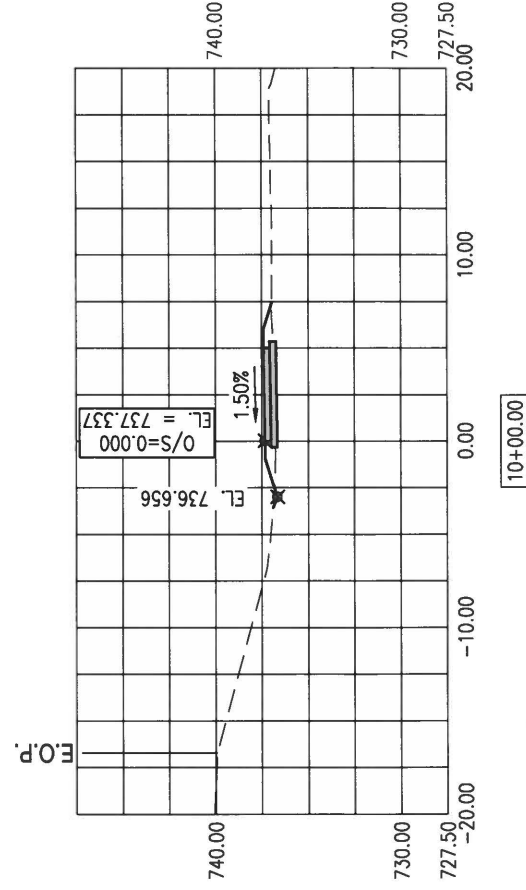
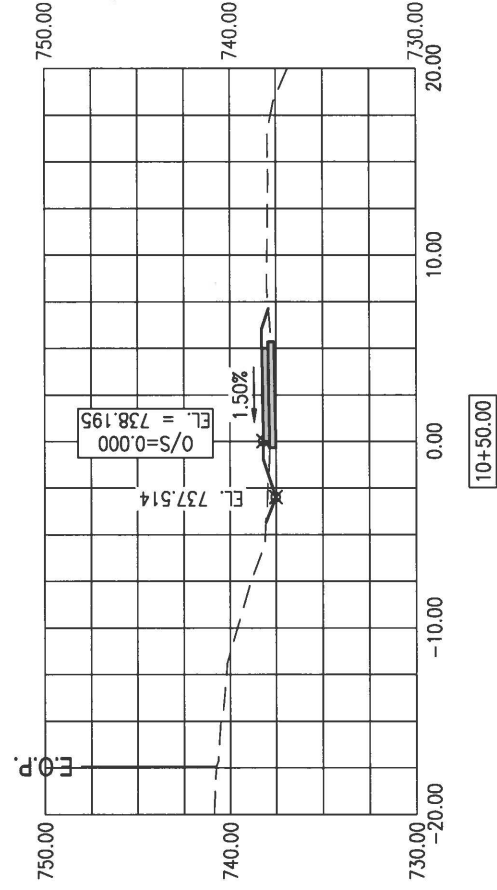
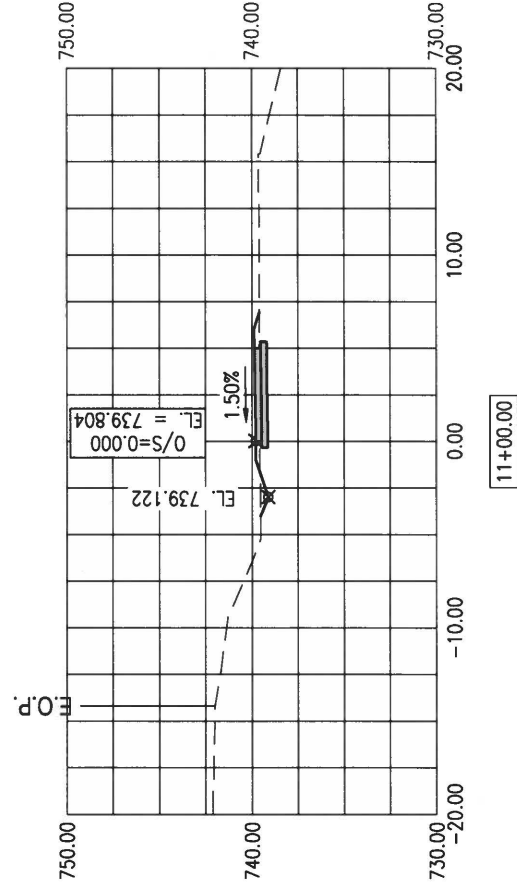
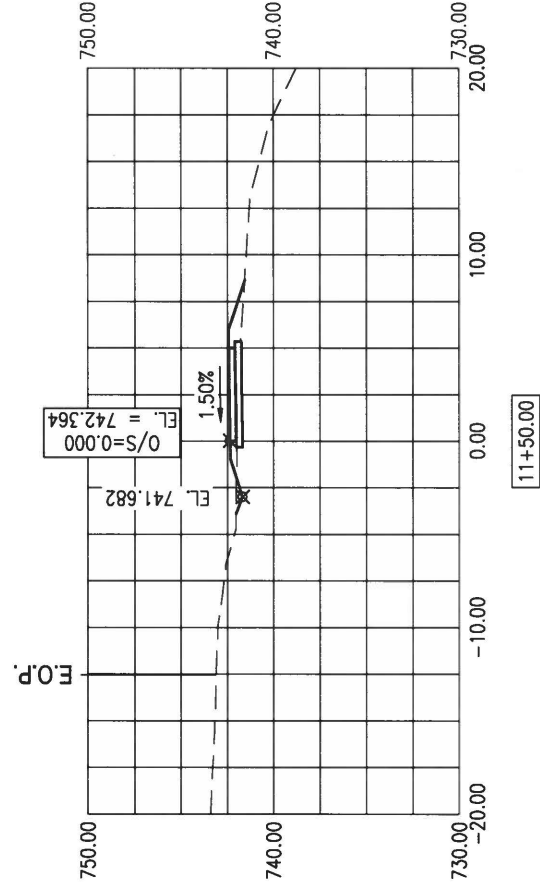
F.A. RTE.	SECTION	COUNTY	TOTAL SHEETS	SHEET NO.
---	19-00385-00-SW	PEORIA	20	15
ILLINOIS	CONTRACT NO. 89786	CROSS SECTIONS		

FULL SIZE: 1" = 5' H&V
 HALF SIZE: 1" = 10' H&V



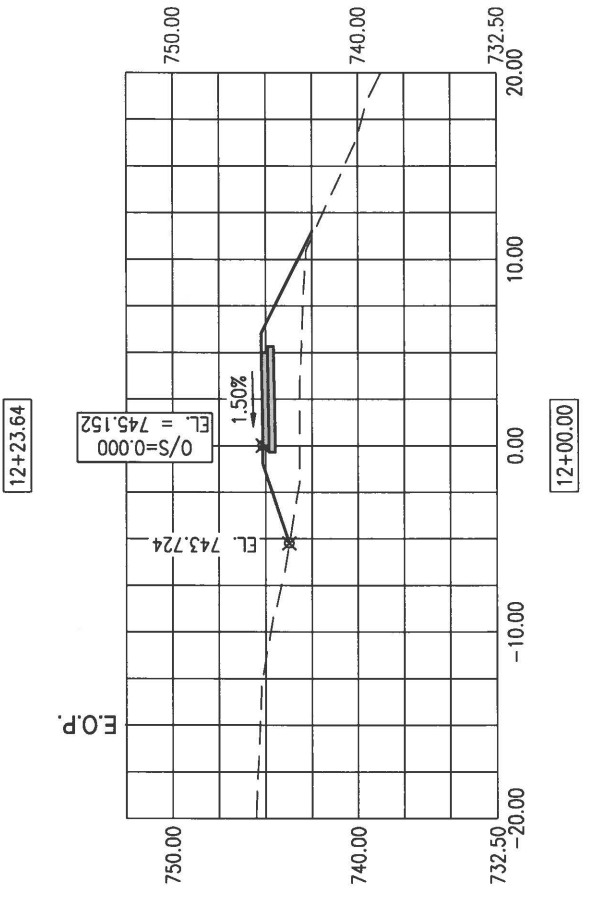
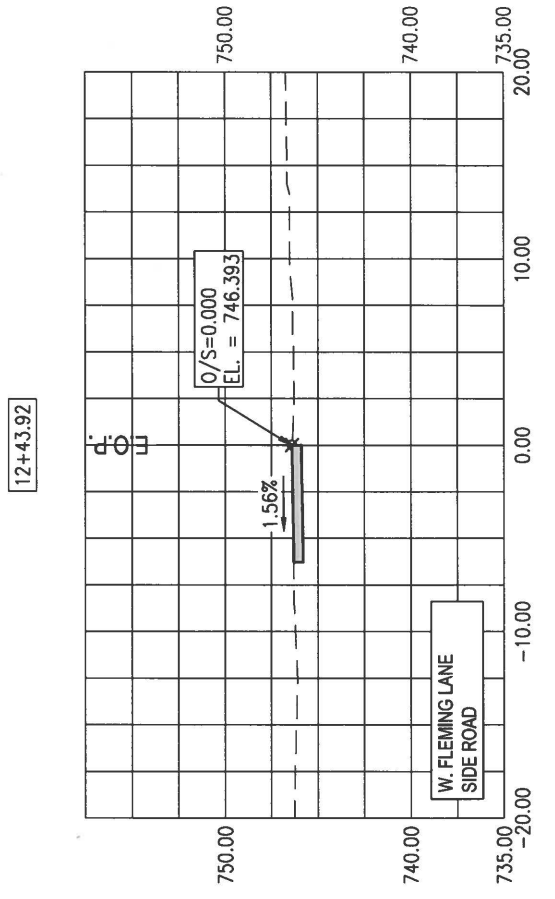
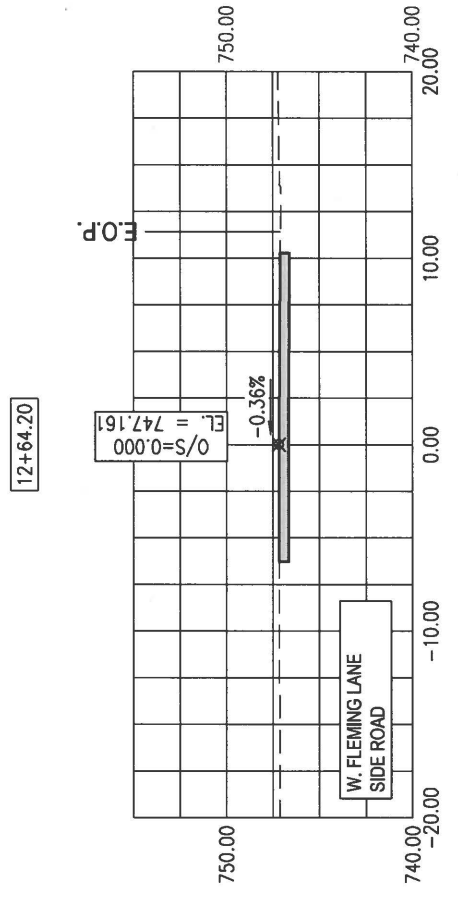
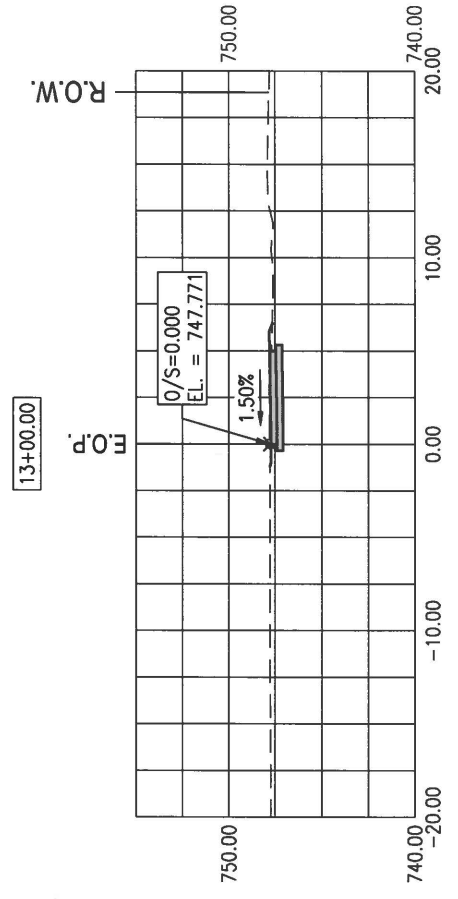
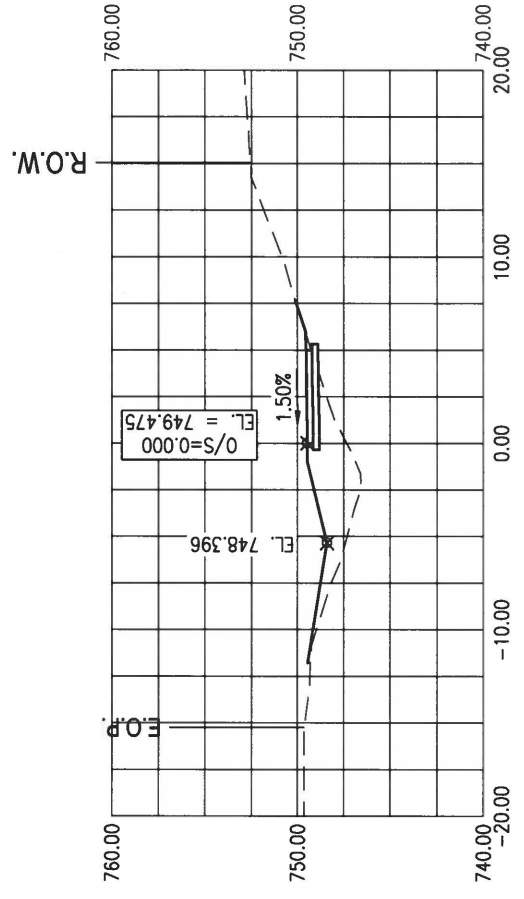
F.A. RTE.	SECTION	COUNTY	TOTAL SHEETS	SHEET NO.
---	19-00385-00-SW	PEORIA	20	16
ILLINOIS	CONTRACT NO. 89786		CROSS SECTIONS	

FULL SIZE: 1" = 5' H&V
 HALF SIZE: 1" = 10' H&V



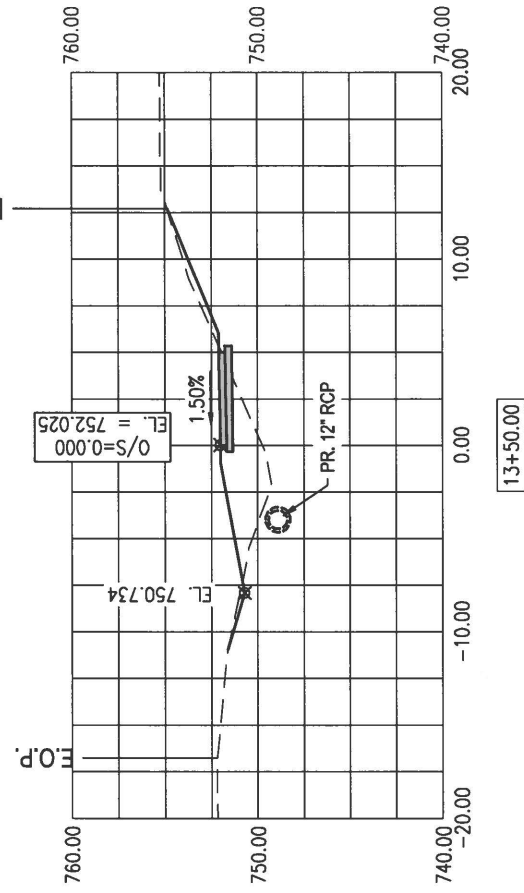
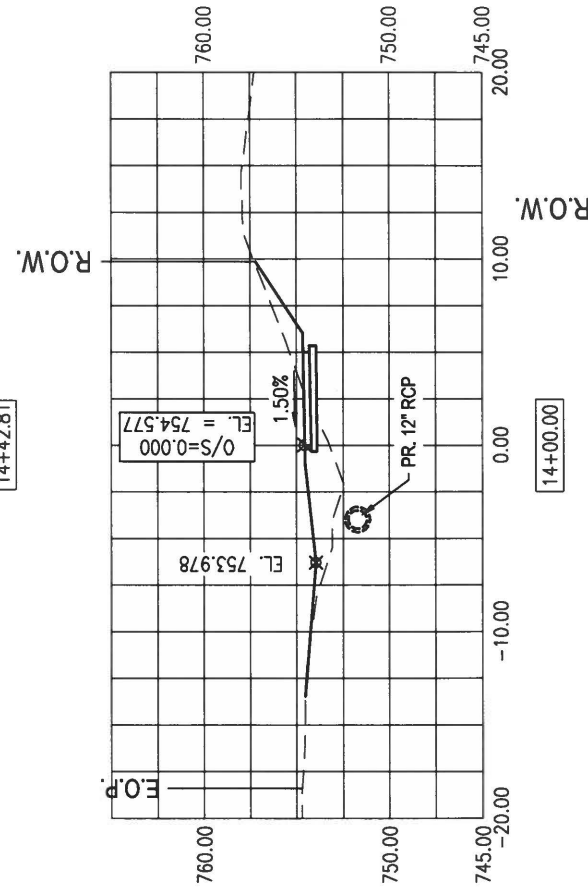
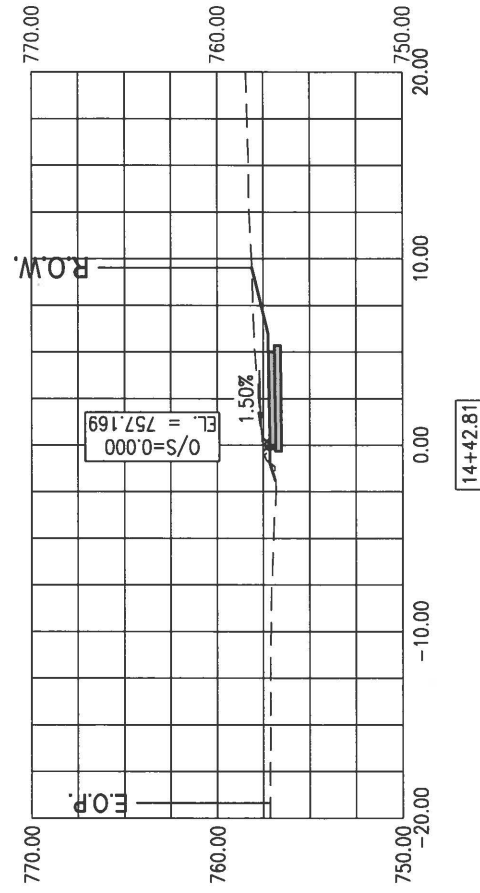
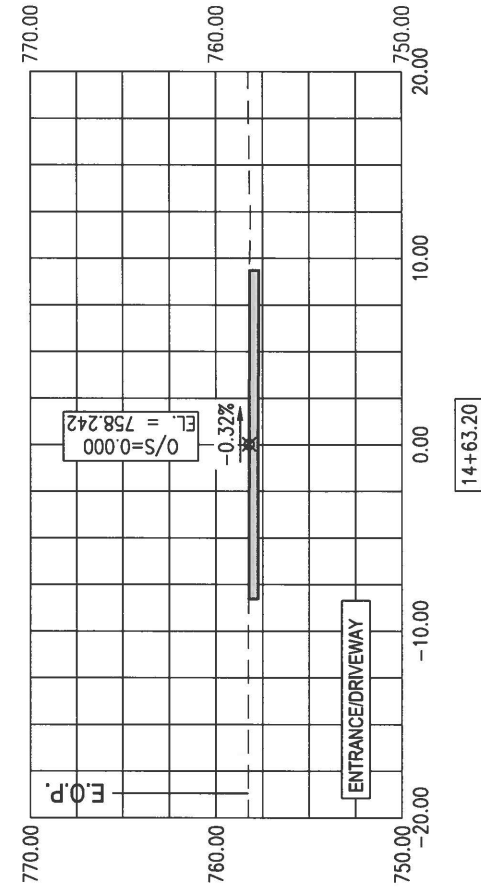
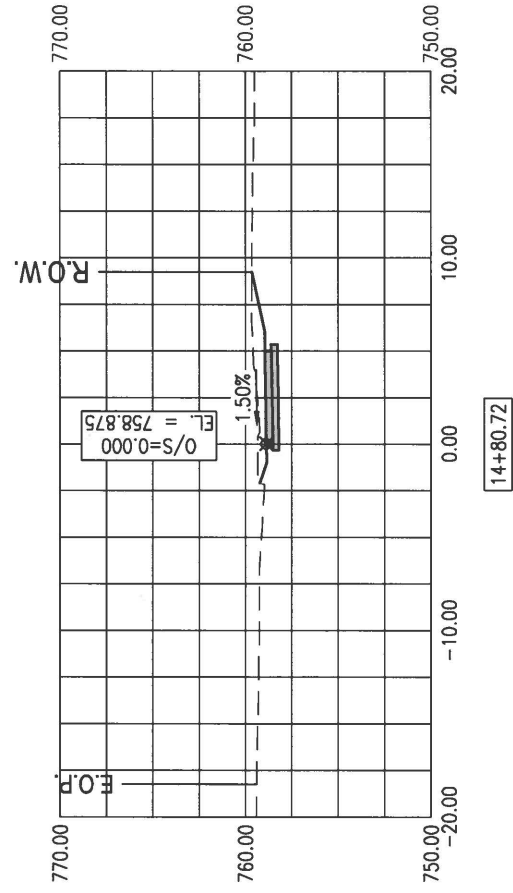
F.A. RTE.	SECTION	COUNTY	TOTAL SHEETS	SHEET NO.
---	18-00385-00-SW	PEORIA	20	17
ILLINOIS	CONTRACT NO. 89786	CROSS SECTIONS		

FULL SIZE: 1" = 5' H&V
 HALF SIZE: 1" = 10' H&V



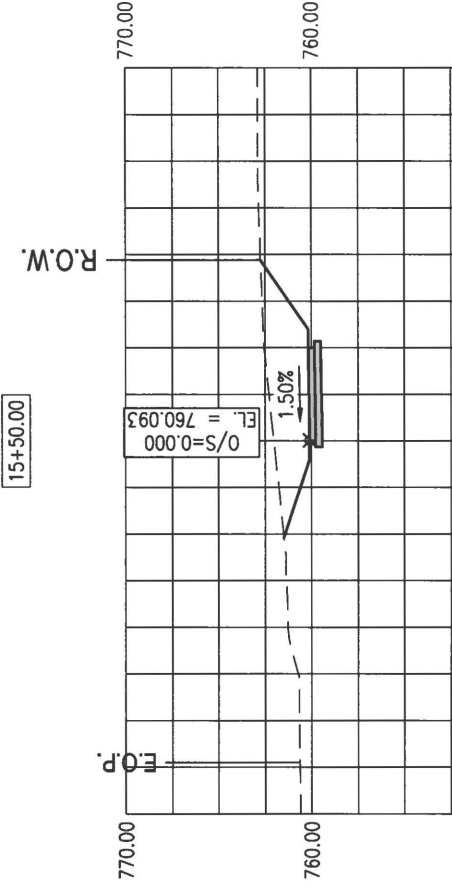
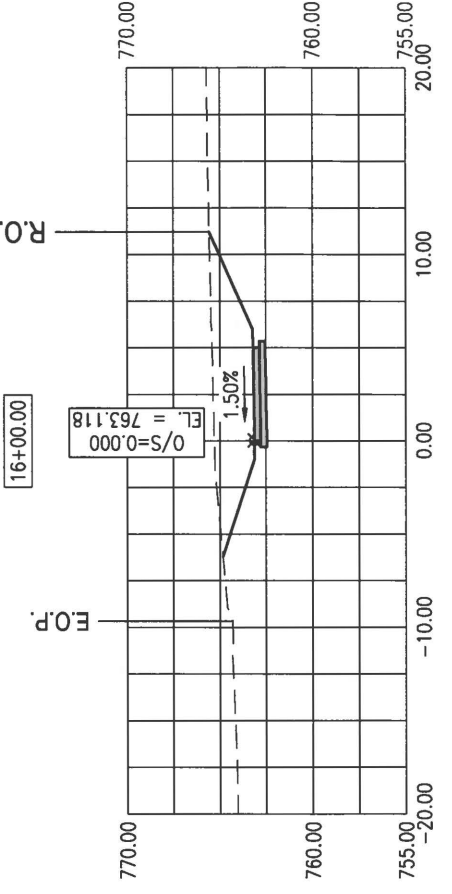
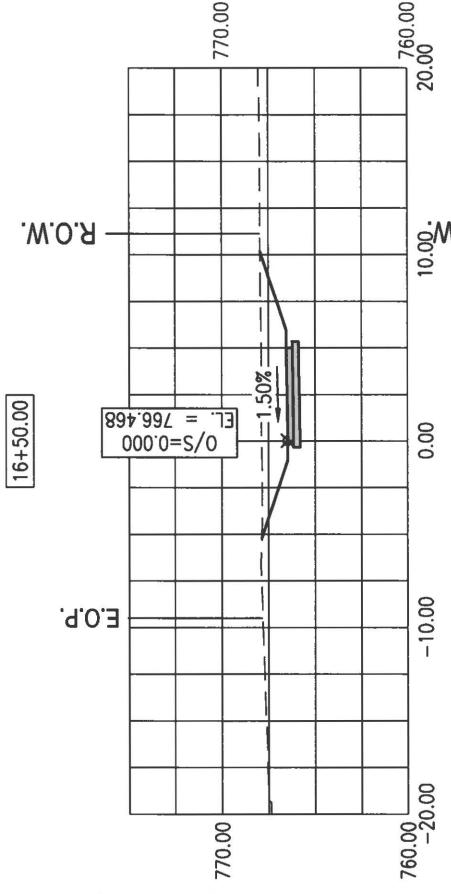
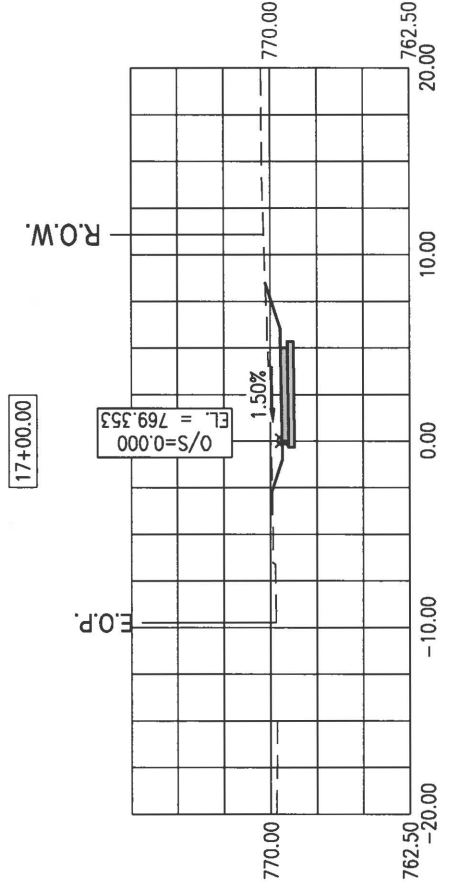
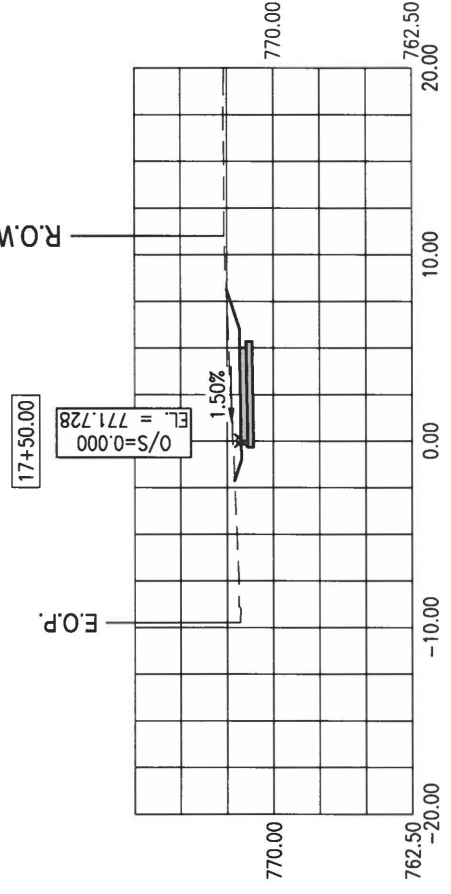
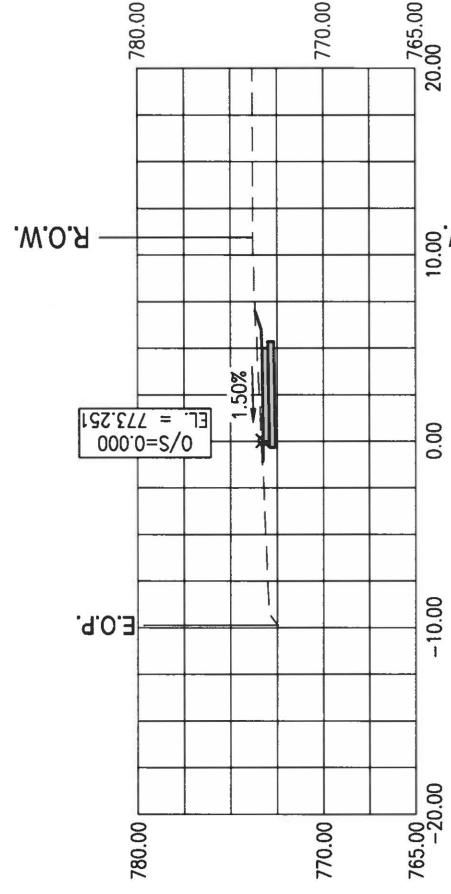
F.A. RTE.	SECTION	COUNTY	TOTAL SHEETS	SHEET NO.
---	19-00385-00-SW	PEORIA	20	18
ILLINOIS	CONTRACT NO. 89786	CROSS SECTIONS		

FULL SIZE: 1" = 5' H&V
 HALF SIZE: 1" = 10' H&V



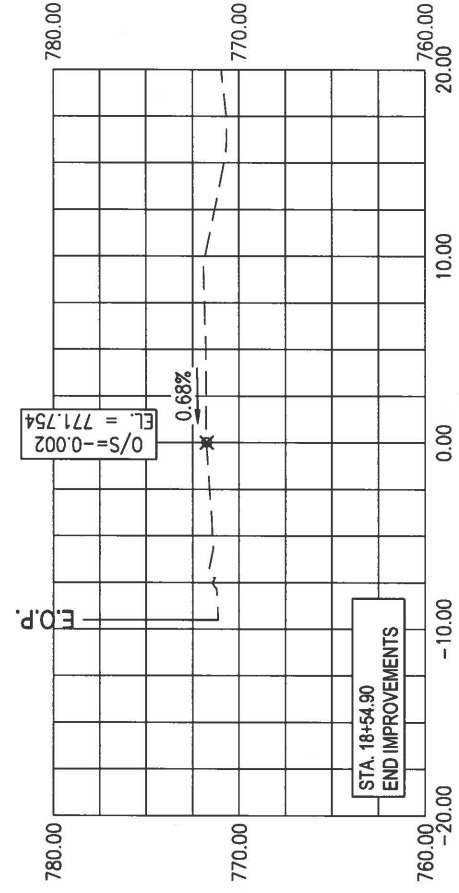
F.A. RTE.	SECTION	COUNTY	TOTAL SHEETS	SHEET NO.
---	19-00385-00-SW	PEORIA	20	19
ILLINOIS	CONTRACT NO. 89786		CROSS SECTIONS	

FULL SIZE: 1" = 5' H&V
 HALF SIZE: 1" = 10' H&V

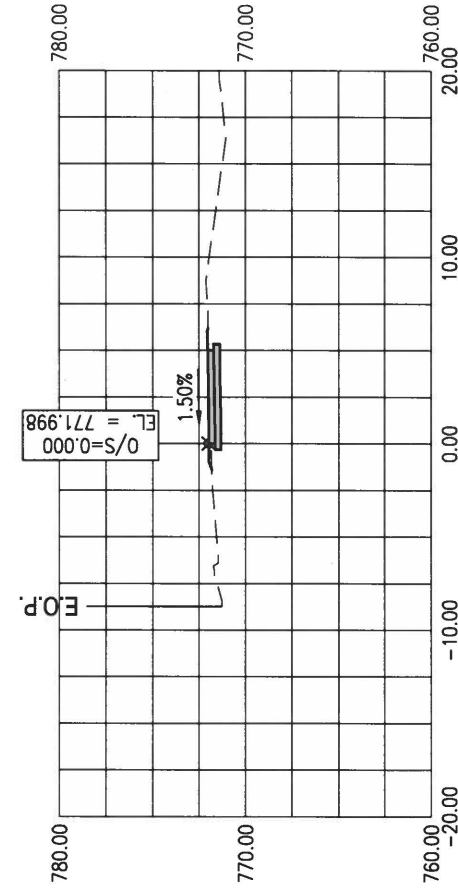


F.A. RTE.	SECTION	COUNTY	TOTAL SHEETS	SHEET NO.
----	19-00385-00-SW	PEORIA	20	20
ILLINOIS	CONTRACT NO. 89786	CROSS SECTIONS		

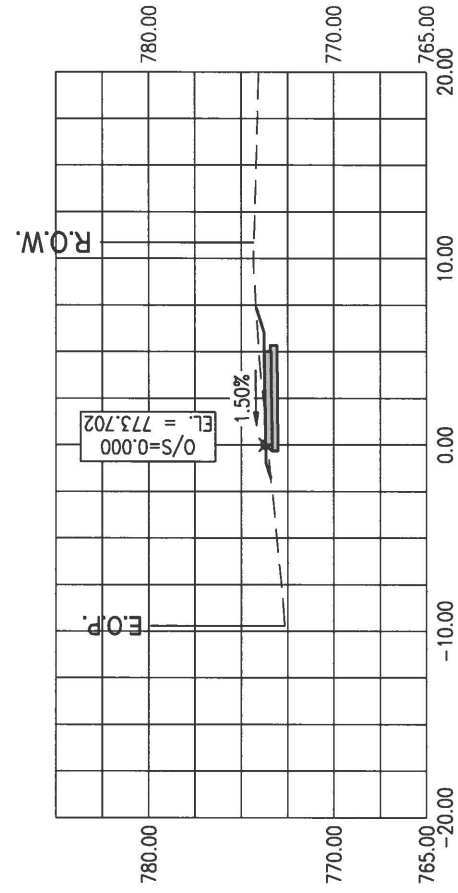
FULL SIZE: 1" = 5' H&V
 HALF SIZE: 1" = 10' H&V



18+54.90



18+50.00



18+00.00