

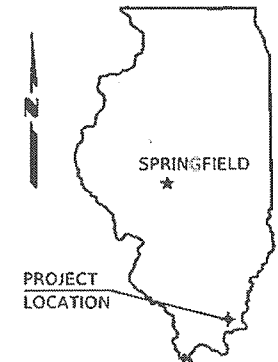


07-30-2021 LETTING ITEM 064

STATE OF ILLINOIS
DEPARTMENT OF TRANSPORTATION
PLANS FOR PROPOSED

SURFACE TRANSPORTATION PROGRAM
OFF SYSTEM BRIDGE

ROUTE	SECTION	COUNTY	TOTAL SHEETS	SHEET NO.
FAS 902	17-00157-00-BR	SALINE	13	1
PROJEC# NO. ENT7(919)			CONTRACT NO. 99601	

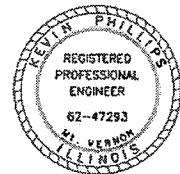


SUMMARY OF QUANTITIES

CODE NO.	PAY ITEM	UNIT	TOTAL
* X2501000	SEEDING, CLASS 2 (SPECIAL)	ACRE	0.2
* X7010216	TRAFFIC CONTROL AND PROTECTION (SPECIAL)	L SUM	1
* 20100110	TREE REMOVAL (6 TO 15 UNITS DIAMETER)	UNIT	24
* 20100210	TREE REMOVAL (OVER 15 UNITS DIAMETER)	UNIT	37
20200100	EARTH EXCAVATION	CU YD	25
* 20300100	CHANNEL EXCAVATION	CU YD	500
* 28100807	STONE DUMPED RIPRAP, CLASS A4	TON	547
* 35100100	AGGREGATE BASE COURSE, TYPE A	TON	51
40600275	BITUMINOUS MATERIALS (PRIME COAT)	POUND	202
40600290	BITUMINOUS MATERIALS (TACK COAT)	POUND	622
40600982	HOT-MIX ASPHALT SURFACE REMOVAL - BUTT JOINT	SQ YD	98
40603085	HOT-MIX ASPHALT BINDER COURSE, IL-19.0, N70	TON	25
40604052	HOT-MIX ASPHALT SURFACE COURSE, IL-9.5, MIX "C", N70	TON	150
44000157	HOT-MIX ASPHALT SURFACE REMOVAL, 2"	SQ YD	923
48101200	AGGREGATE SHOULDERS, TYPE B	TON	130
50100100	REMOVAL OF EXISTING STRUCTURES	EACH	1
50200100	STRUCTURE EXCAVATION	CU YD	101
50300225	CONCRETE STRUCTURES	CU YD	51
50300280	CONCRETE ENCASEMENT	CU YD	4
50400605	PRECAST PRESTRESSED CONCRETE DECK BEAMS (33" DEPTH)	SQ FT	2,465
50800105	REINFORCEMENT BARS	POUND	5,300
Δ 50900205	STEEL RAILING, TYPE S1	FOOT	166
51201500	FURNISHING STEEL PILES HP10X57	FOOT	516
51202305	DRIVING PILES	FOOT	516
51500100	NAME PLATES	EACH	1
58100200	WATERPROOFING MEMBRANE SYSTEM	SQ YD	282
59300100	CONTROLLED LOW-STRENGTH MATERIAL	CU YD	16
Δ 63000001	STEEL PLATE BEAM GUARDRAIL, TYPE A, 6 FOOT POSTS	FOOT	175
Δ 63100075	TRAFFIC BARRIER TERMINAL, TYPE 5A	EACH	2
Δ 63100167	TRAFFIC BARRIER TERMINAL, TYPE 1 (SPECIAL) TANGENT	EACH	2
63200310	GUARDRAIL REMOVAL	FOOT	160
67100100	MOBILIZATION	L SUM	1
70107025	CHANGEABLE MESSAGE SIGN	CAL DA	28
Δ 72501000	TERMINAL MARKER - DIRECT APPLIED	EACH	4
Δ 78001110	PAINT PAVEMENT MARKING - LINE 4"	FOOT	1,240
# Z0076600	TRAINEES	HOUR	500
# Z0076604	TRAINEES TRAINING PROGRAM GRADUATE	HOUR	500

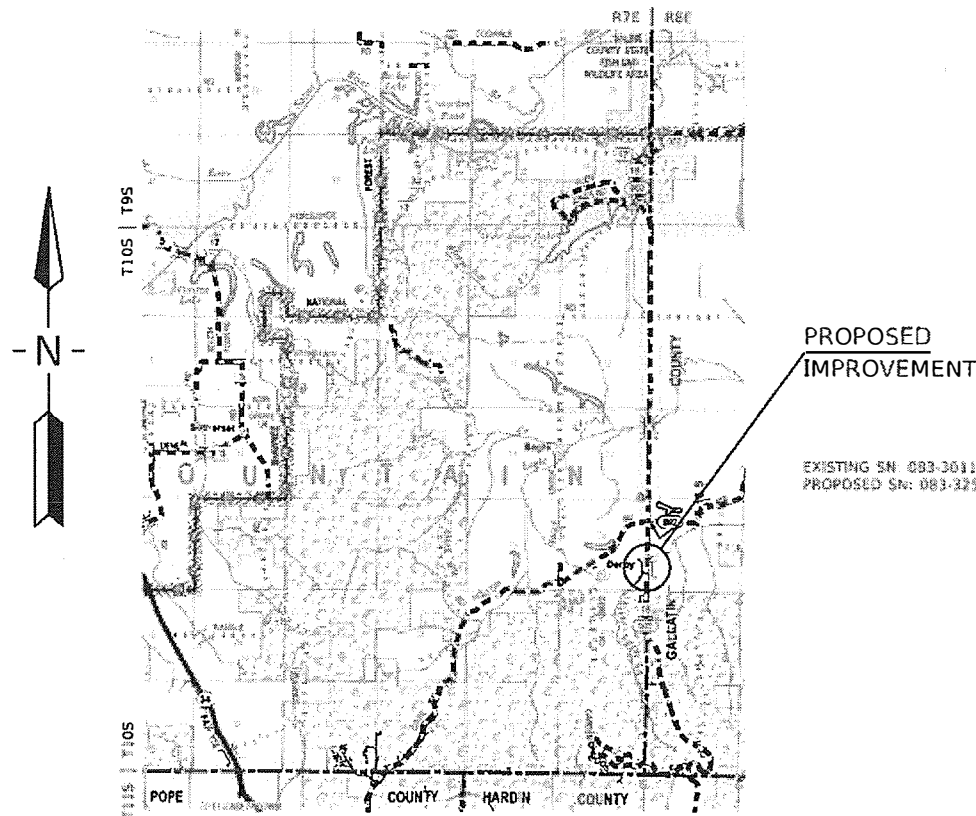
* SEE SPECIAL PROVISIONS
Δ SPECIALTY ITEMS
0042

CONTRACT NO. 99601



Kevin Phillips
Kevin Phillips
PROFESSIONAL ENGINEER
#062-047293
EXPIRES NOV. 30, 2021

FAS ROUTE 902 (FOREST ROAD)
SECTION 17-00157-00-BR
PROJECT NO. ENT7(919)
JOB NO. C-99-048-18
LITTLE EAGLE CREEK
SALINE COUNTY



LOCATION MAP

SCALE: 1" = 2 MILES

NET LENGTH OF IMPROVEMENT = 550.00 FT. = 0.1042 MILES

INDEX OF SHEETS

- COVER SHEET
- TYPICAL SECTIONS
- PLAN & PROFILE
- GENERAL PLAN & ELEVATION
- 33" X 36" PPC DECK BEAMS
- 33" X 36" PPC DECK BEAM DETAILS
- ABUTMENT
- ABUTMENT WING DETAILS
- STEEL RAILING, TYPE S-1
- NAME PLATE
- PILING DETAILS
- CROSS SECTIONS
- STANDARDS: 000001-08 STD SYMBOLS, ABBREVIATIONS & PATTERNS
- 280001-07 TEMPORARY EROSION CONTROL SYSTEMS
- 630001-12 STEEL PLATE BEAM GUARDRAIL
- 630301-09 SHLDR WIDENING FOR TY 1 (SP) TERMINALS
- 701011-05 TRAFFIC CONTROL
- 701311-03 TRAFFIC CONTROL
- 701901-08 TRAFFIC CONTROL DEVICES
- 725001-01 OBJECT AND TERMINAL MARKERS
- 780001-05 TYPICAL PAVEMENT MARKINGS
- BLR 21-9 TYP APPLICATION OF TRAF CONTR DEVICES
- BLR 27-1 TRAFFIC BARRIER TERMINAL, TYPE 5A

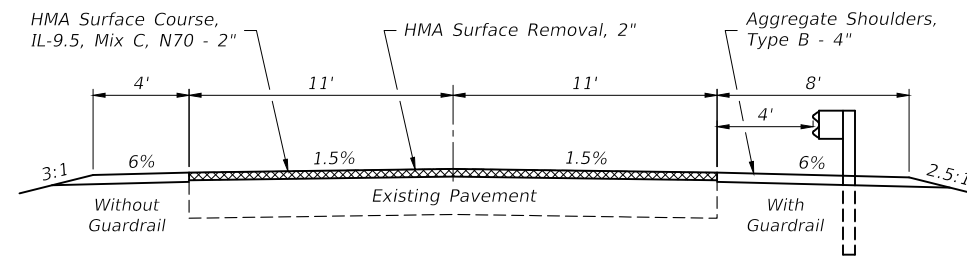
CLASSIFICATION : MAJOR COLLECTOR
ADT : 200
DESIGN SPEED : 40 MPH

ILLINOIS DEPARTMENT OF TRANSPORTATION	
Approved	<u>4/22/2021</u> <i>Clay Pichl</i> Saline County Engineer
Passed	<u>5-18-21</u> <i>Douglas J. ...</i> District Engineer of Local Roads and Streets
Releasing for Bid Based on Limited Review	<u>5-18-21</u> <i>Keith Roberts</i> OH Keith Roberts, P.E. Acting Region Five Engineer

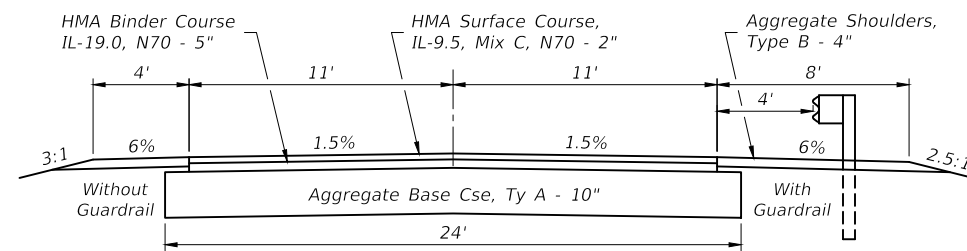
Round Table Design, Inc.
PROFESSIONAL ENGINEERING - LAND SURVEYING
1457 HIGHWAY 145 S HARRISBURG, IL (618) 253-6017

I:\Projects\1800502180050 All.dwg, 4/23/2021, 3:02:16 PM

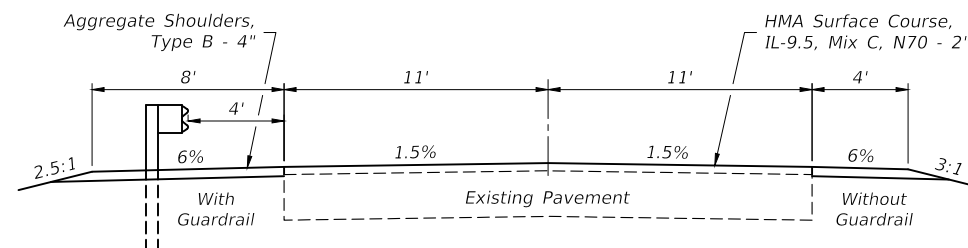
ROUTE	SECTION	COUNTY	TOTAL SHEETS	SHEET NO.
FAS 902	17-00157-00-BR	SALINE	13	2
PROJECT NO. ENT7(919)			CONTRACT NO. 99601	



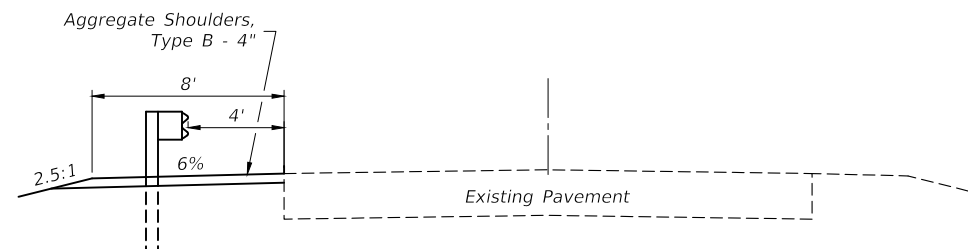
TYPICAL ROADWAY SECTION
STA 28+40 - STA 32+16



TYPICAL ROADWAY SECTION
STA 32+16 - STA 32+51



TYPICAL ROADWAY SECTION
STA 33+35 - STA 33+90



TYPICAL ROADWAY SECTION
STA 33+90 - STA 34+68

GENERAL NOTES

The location of underground utilities shown on the plans is an approximation and is included for information only. The Contractor is responsible for the field location of these utilities.

Bituminous Materials Prime/Tack Coat shall be applied to the full width of the existing surface or aggregate base at the rates shown below.

Factors used for quantity calculations are as follows:

- Hot-Mix Asphalt 112.0 Lbs/Sq Yd/Inch
- Aggregate/Riprap 2.025 Tons/Cu Yd
- Bit Materials (Prime Coat),
on Agg Base 0.25 Lbs/Sq Ft
- Bit Materials (Tack Coat),
on HMA Base 0.05 Lbs/Sq Ft
- on HMA Lift 0.025 Lbs/Sq Ft

PAINT PAVEMENT MARKING - LINE 4" (FT)

Location	Centerline (Yellow Dashed)	Edge Line (White Solid)
Sta 28+40 to Sta 34+92	160	1,304

See Standard 780001 for typical pavement markings.

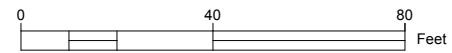
HOT-MIX ASPHALT MIXTURE REQUIREMENTS

Mixture Use:	HMA Binder Course, IL-19.0, N70
PG:	PG64-22
RAP% (Max):	10
Design Air Voids:	4% @ N _{des} 70
Mixture Composition: (Gradation Mixture)	IL-19.0mm
Friction Aggregate:	None

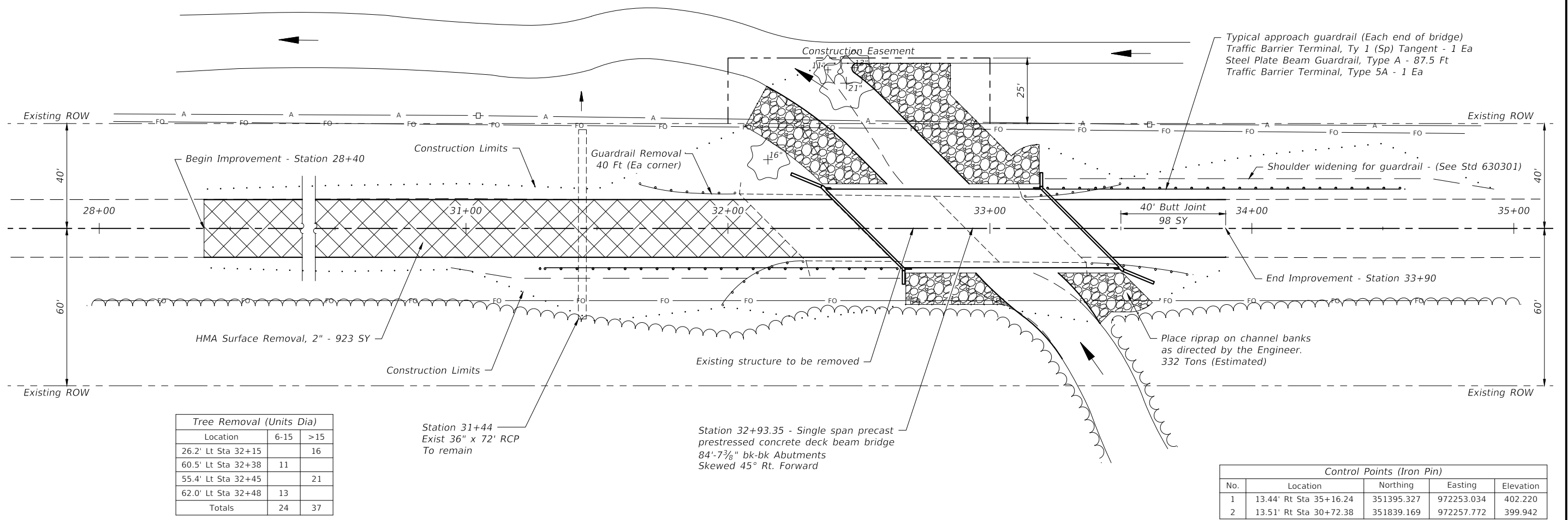
Mixture Use:	HMA Surface Course, IL-9.5, Mix "C", N70
PG:	PG64-22
RAP% (Max):	10
Design Air Voids:	4% @ N _{des} 70
Mixture Composition: (Gradation Mixture)	IL-9.5mm
Friction Aggregate:	C Surface

TYPICAL SECTIONS
FAS ROUTE 902 (FOREST ROAD)
LITTLE EAGLE CREEK
SECTION 17-00157-00-BR
SALINE COUNTY
STRUCTURE NO. 083-3254

Existing Structure - Three span precast concrete deck beams on concrete spill-thru abutments & piers. 25.5' W x 110' L

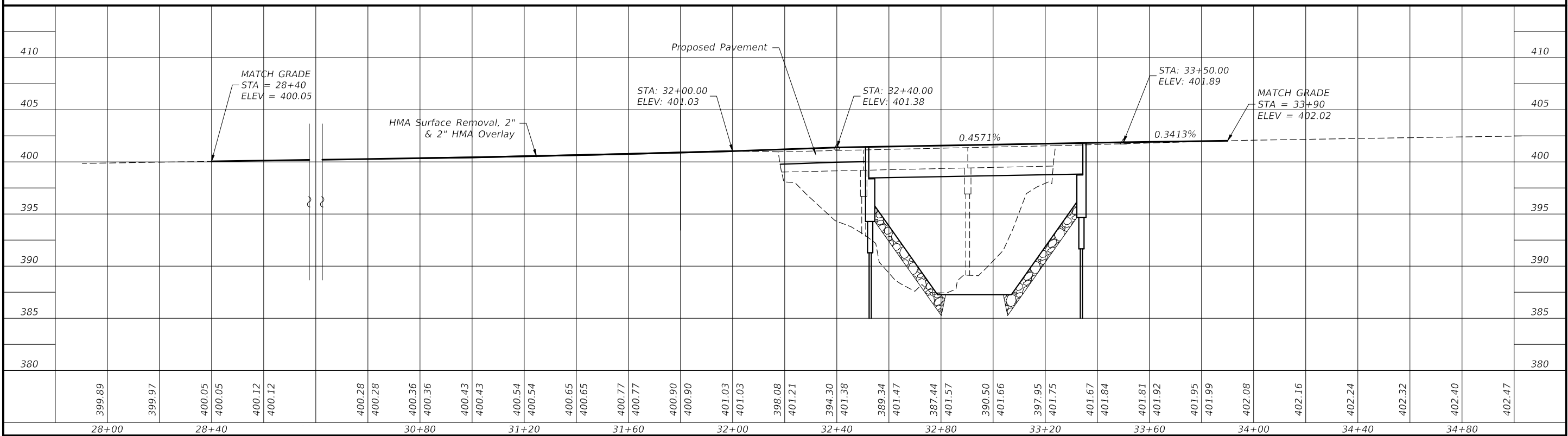


ROUTE	SECTION	COUNTY	TOTAL SHEETS	SHEET NO.
FAS 902	17-00157-00-BR	SALINE	13	3
PROJECT NO. ENT7(919)			CONTRACT NO. 99601	

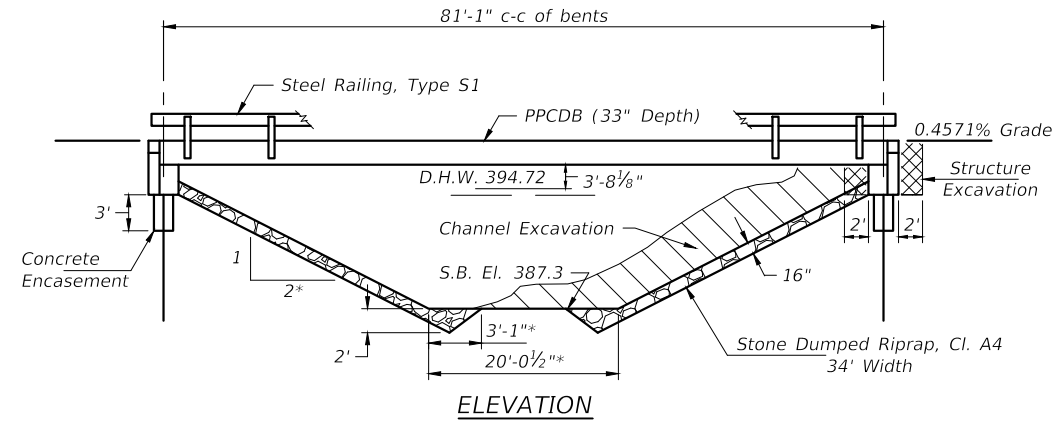


Location	6-15	>15
26.2' Lt Sta 32+15		16
60.5' Lt Sta 32+38	11	
55.4' Lt Sta 32+45		21
62.0' Lt Sta 32+48	13	
Totals	24	37

No.	Location	Northing	Easting	Elevation
1	13.44' Rt Sta 35+16.24	351395.327	972253.034	402.220
2	13.51' Rt Sta 30+72.38	351839.169	972257.772	399.942



ROUTE	SECTION	COUNTY	TOTAL SHEETS	SHEET NO.
FAS 902	17-00157-00-BR	SALINE	13	4
PROJECT NO. ENT7(919)			CONTRACT NO. 99601	



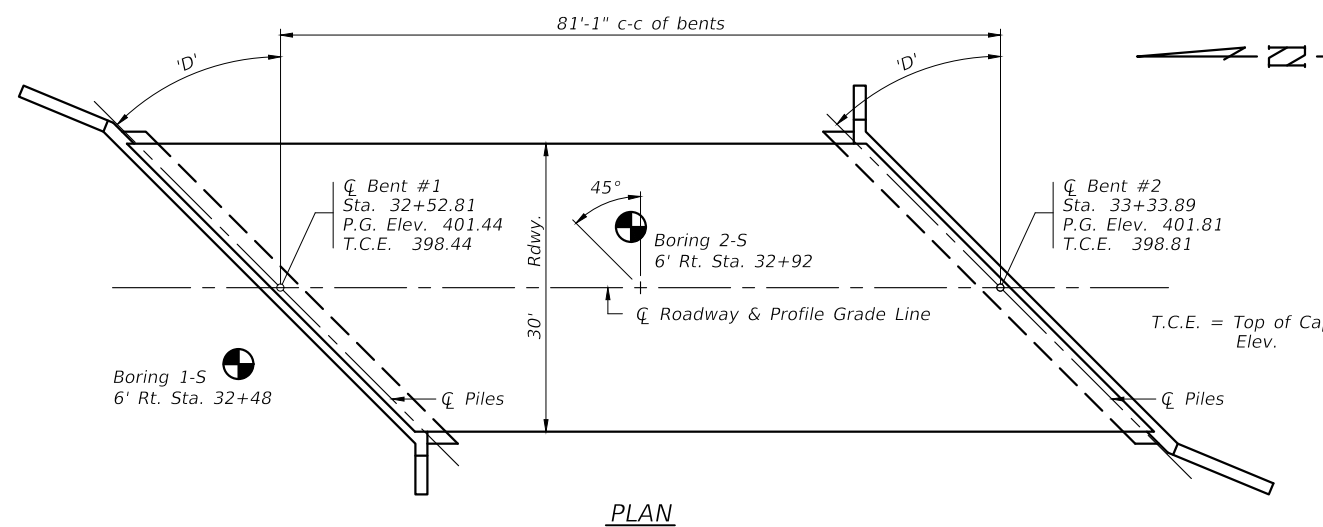
GENERAL NOTES

- Steel H piles shall meet AASHTO M270 Grade 50 specifications.
- See special provisions for boring logs.
- A Corrosion inhibitor, as covered in the Standard Specifications, shall be used in the precast prestressed concrete deck beams.

Existing Structure - Three span precast concrete deck beams on concrete spill-thru abutments & piers. 25.5' W x 110.0' L

TOTAL BILL OF MATERIAL

Item	Unit	Super	Sub.		Total
			Piers	Abuts.	
Channel Excavation	Cu. Yds.			500	500
Stone Dumped Riprap, Class A4	Tons			215	215
HMA Surf. Cse., Mix "C", N70	Tons	33			33
Removal of Existing Structures	Each	1			1
Structure Excavation	Cu. Yds.			101	101
Concrete Structures	Cu. Yds.			51.0	51.0
Concrete Encasement	Cu. Yds.			4.0	4.0
P.P. Conc. Dk. Bm. 33" Dp.	Sq. Ft.	2,465			2,465
Reinforcement Bars	Pound			5,300	5,300
Steel Railing, Type S1	Foot	166			166
Furnishing Steel Piles HP10x57	Foot			516	516
Driving Piles	Foot			516	516
Name Plates	Each			1	1



Skew Angle "D" = 45° Right Forward

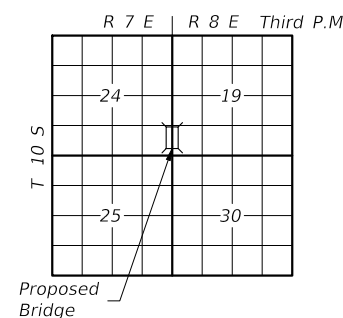
PILE DATA (2 ABUTS.)

Type & Size : Steel HP10x57
 Nominal Required Bearing : 323 kips
 Factored Resistance Available : Refusal
 Estimated Length : 44' Bent #1, 42' Bent #2
 Number Required : 12

STATION 32+93.35
 LITTLE EAGLE CREEK
 SEC. 17-00157-00-BR BUILT 20 ___
 SALINE COUNTY
 LOADING HL-93
 STR. NO. 083-3254

LETTERING FOR NAME PLATE

Locate Name Plate at southeast Corner of Bridge (See Sheet 9)



LOCATION SKETCH

I certify that to the best of my knowledge, information and belief, this bridge design is structurally adequate for the design loading shown on the plans. The design is an economical one for the type of structure and complies with the requirements of the current AASHTO LRFD Specifications.

(Signature)
 Zeyn B. Uzman
 S.E. #81-4745
 Expires Nov. 30, 2022



DESIGN SPECIFICATIONS

2014 AASHTO LRFD Bridge Design Specifications and all applicable interims.

LOADING HL-93

Allow 50#/sq. ft. for future wearing surface

SEISMIC DATA

Seismic Performance Zone (SPZ) = 4
 Design Spectral Acceleration at 1.0 sec. (S_{D1}) = 0.153
 Design Spectral Acceleration at 0.2 sec. (S_{D5}) = 0.599
 Soil Site Class = B

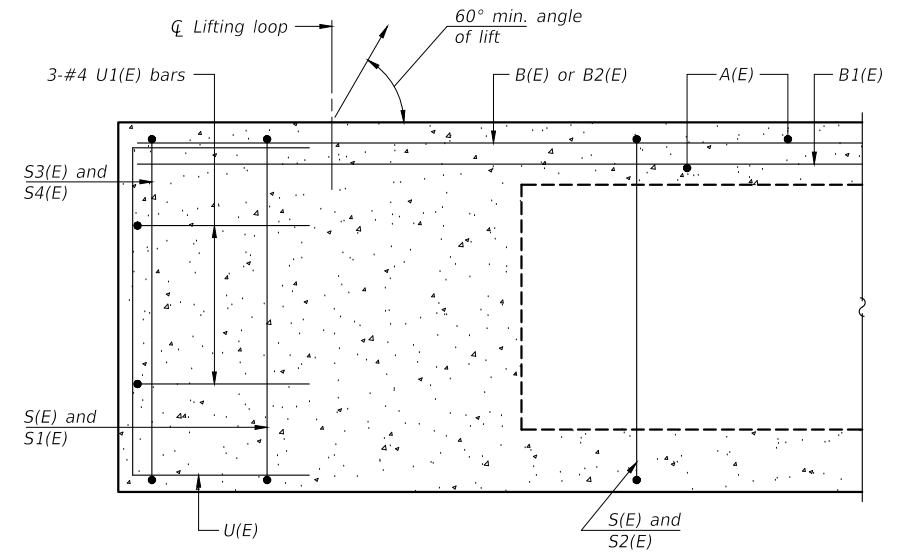
WATERWAY INFORMATION

Flood	Freq. Yr.	Q C.F.S.	Opening Sq. Ft.		Natural H.W.E.		Head-Ft.		Headwater El.	
			Exist.	Prop.	Exist.	Prop.	Exist.	Prop.	Exist.	Prop.
			At Sta. 31+60							
Design	20	1670	218.6	260.7	394.70	394.71	1.21	0.00	395.91	394.72
Base	100	2650	247.2	289.3	395.27	395.28	2.57	0.12	397.84	395.40
Overtopping	292	3381	267.5	309.9	395.66		3.55		399.21	
Max. Calc.	500	3810	278.7	321.3	395.87	395.88	4.81	1.13	400.68	397.01

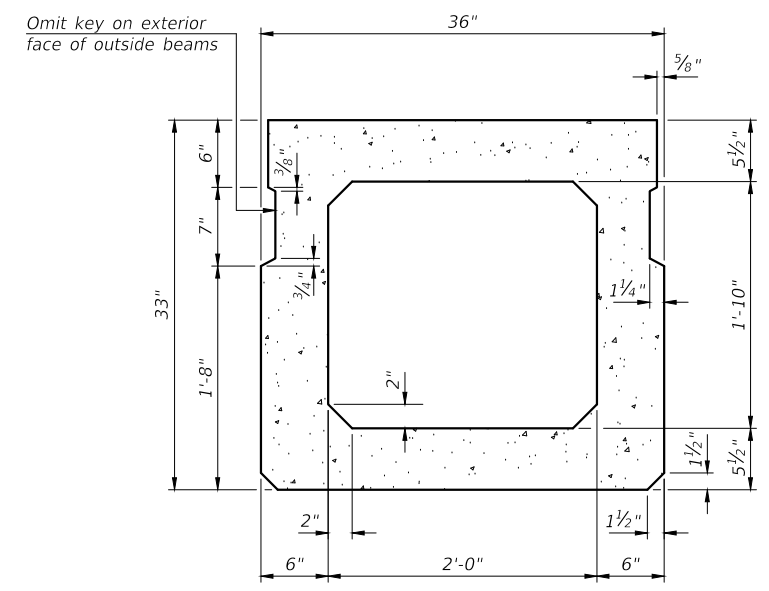
Over Road Flow (Sq. Ft.): Existing $Q_{(500)}$ 255.9

GENERAL PLAN & ELEVATION
 FAS ROUTE 902 (FOREST ROAD)
 LITTLE EAGLE CREEK
 SECTION 17-00157-00-BR
 SALINE COUNTY
 STRUCTURE NO. 083-3254

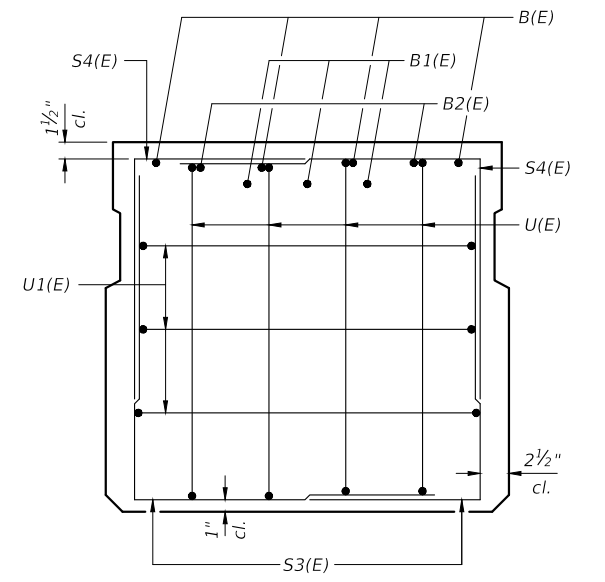
ROUTE	SECTION	COUNTY	TOTAL SHEETS	SHEET NO.
FAS 902	17-00157-00-BR	SALINE	13	5
PROJECT NO. ENT7(919)			CONTRACT NO. 99601	



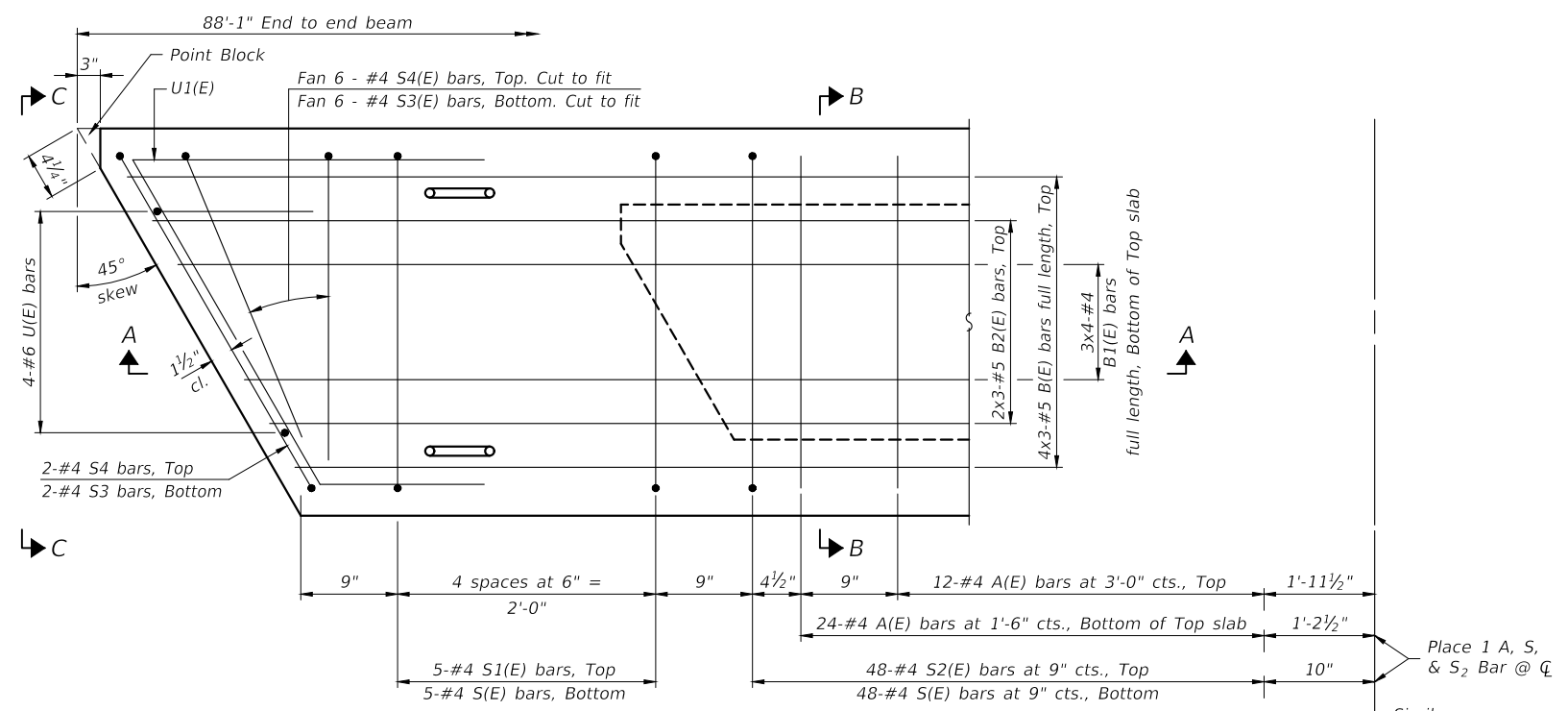
SECTION A-A



SECTION B-B
(Showing dimensions)

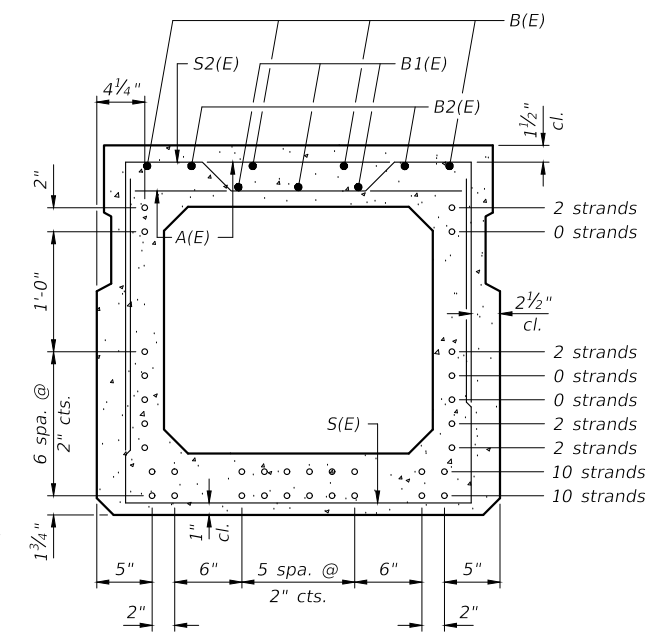


VIEW C-C



PLAN VIEW

Note: Spacing of S(E) and S2(E) bars may be adjusted up to 4" in the immediate area of the transverse tie diaphragms to miss the block outs for the transverse ties.



SECTION B-B
(Showing reinforcement and permissible strand locations)

Note: Place the number of strands specified in each row symmetrically about the centerline of beam in the permissible strand locations shown.

BAR LIST
ONE BEAM ONLY
(For information only)

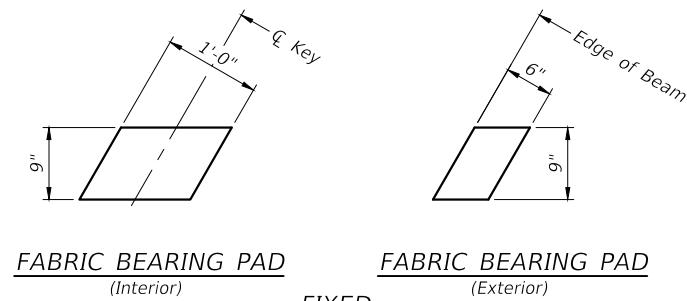
Bar	No.	Size	Length	Shape
A(E)	73	#4	2'-7"	—
B(E)	12	#5	28'-11"	—
B1(E)	12	#4	21'-11"	—
B2(E)	6	#5	28'-11"	—
S(E)	107	#4	7'-8"	┌
S1(E)	10	#4	6'-5"	┌
S2(E)	97	#4	6'-8"	┌
S3(E)	16	#4	5'-4"	┌
S4(E)	16	#4	4'-7"	┌
U(E)	8	#6	5'-0"	┌
U1(E)	6	#4	8'-7"	┌

Notes:
See sheet 5 of 12 for additional details and Bill of Materials.
Bars noted thus 4x2-#5 etc. indicates 4 lines of bars with 2 lengths per line.

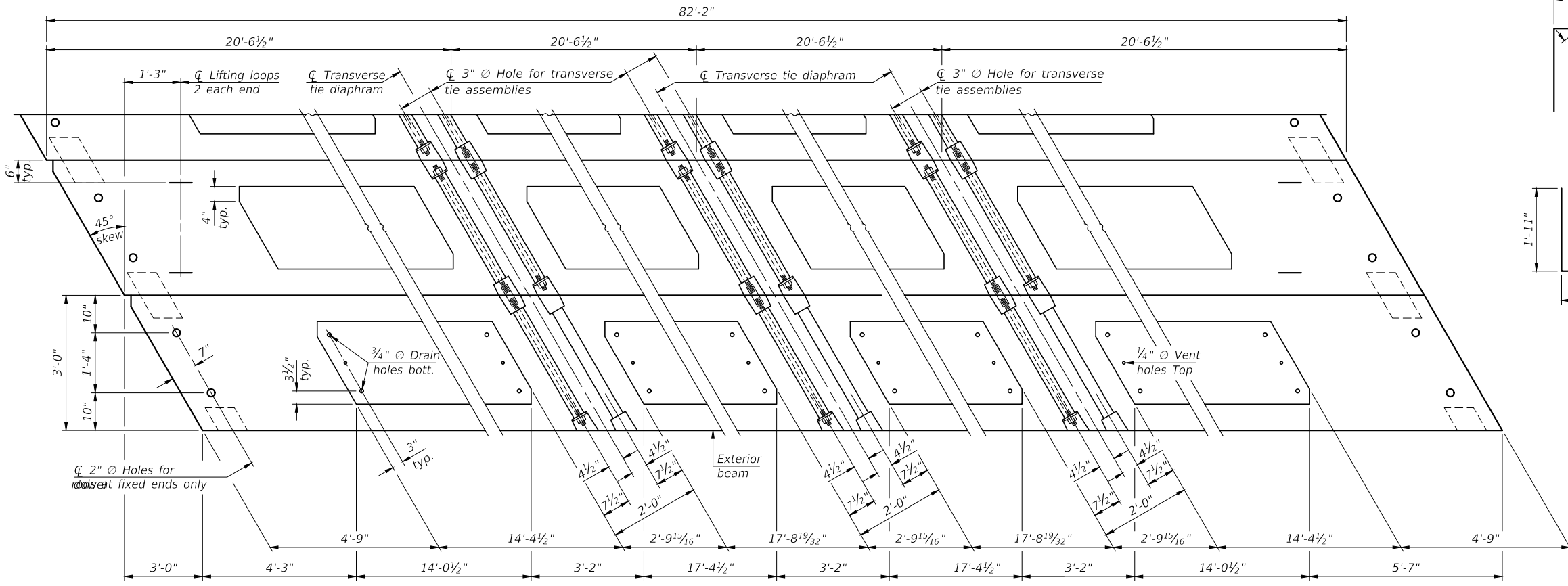
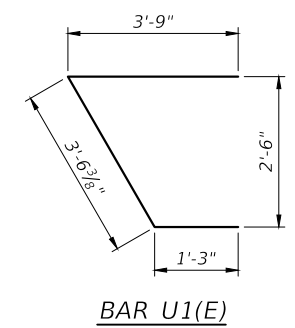
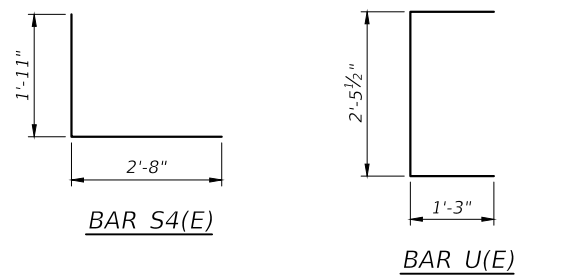
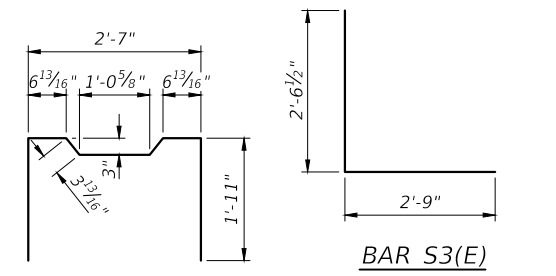
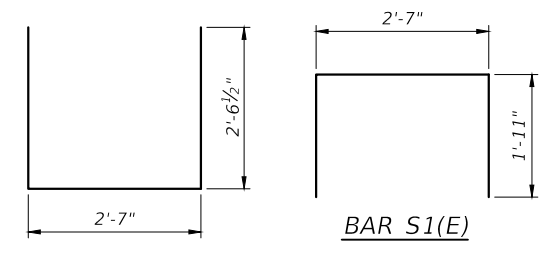
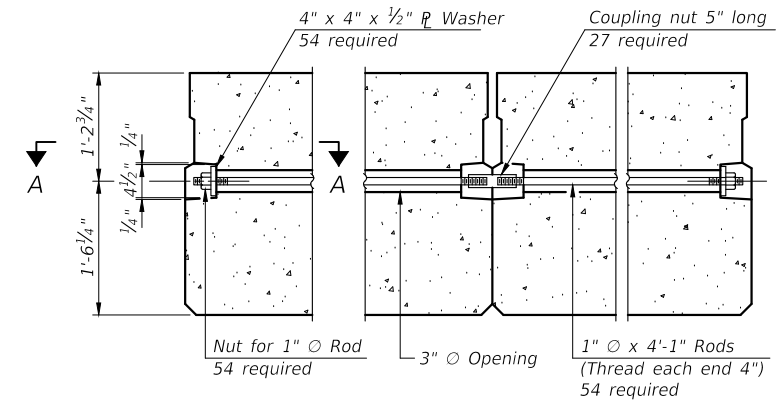
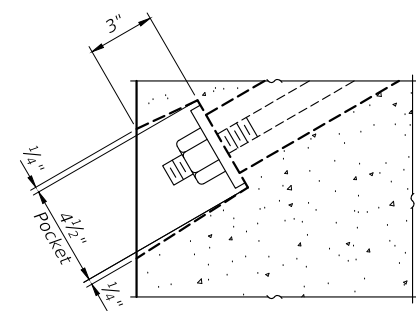
MINIMUM BAR LAP
#4 bar = 1'-11"
#5 bar = 2'-6"

33" X 36" PPC DECK BEAM
FAS ROUTE 902 (FOREST ROAD)
LITTLE EAGLE CREEK
SECTION 17-00157-00-BR
SALINE COUNTY
STRUCTURE NO. 083-3254

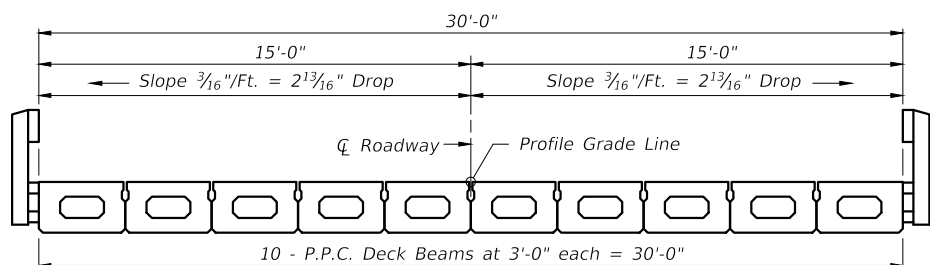
ROUTE	SECTION	COUNTY	TOTAL SHEETS	SHEET NO.
FAS 902	17-00157-00-BR	SALINE	13	6
PROJECT NO. ENT7(919)			CONTRACT NO. 99601	



Notes:
 All bearing pads shall be 1" thick.
 Omit holes when using expansion bearings.
 Expansion bearing pads shall be bonded to the substructure.

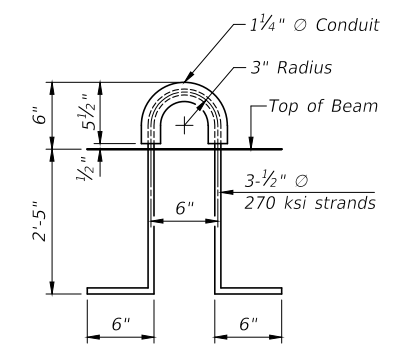


Note: Connect beams in pairs with the transverse tie configuration shown.



NOTES

Prestressing steel shall be uncoated high strength, low relaxation 7-wire strand, Grade 270. The nominal diameter shall be 1/2" and the nominal cross-sectional area shall be 0.153 sq. in.
 The 1" diameter rods in the transverse tie assembly shall be tightened to a snug fit and the threads set. Pockets on exterior faces of bridge shall be filled with grout after transverse tie assembly is in place.
 Two 1/8" fabric adjusting shims of the dimensions of the exterior bearing pad shall be provided for each bearing pad location.
 A minimum 2 1/2" diameter lifting pin shall be used to engage the lifting loops during handling.
 Corrosion Inhibitor, per Article 1020.05(b)(10) and 1021.07 of the Standard Specifications, shall be used in the concrete for precast prestressed concrete deck beams.
 Compressive strength of prestressed concrete, f'c, shall be 6000 psi.
 Compressive strength of prestressed concrete at release, f'ci, shall be 5000 psi.

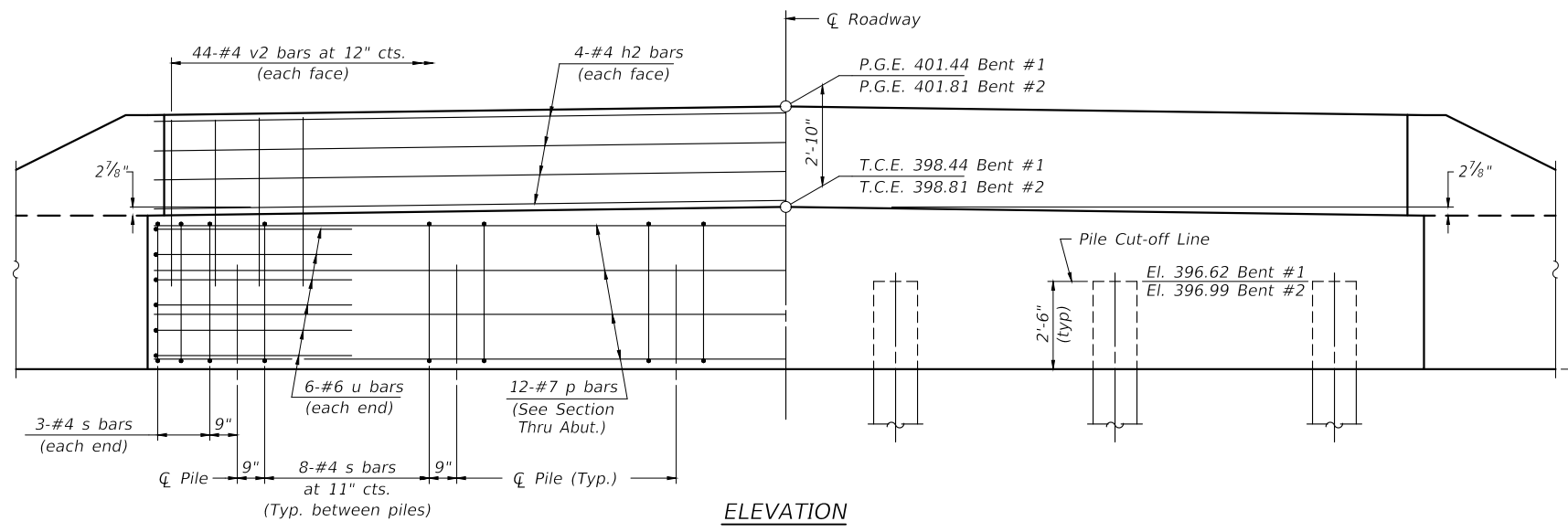
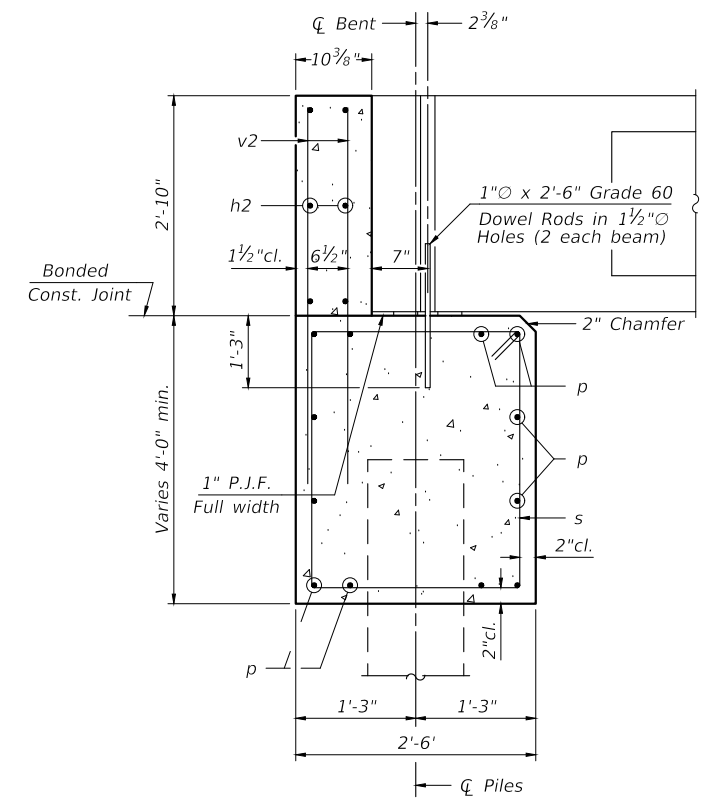
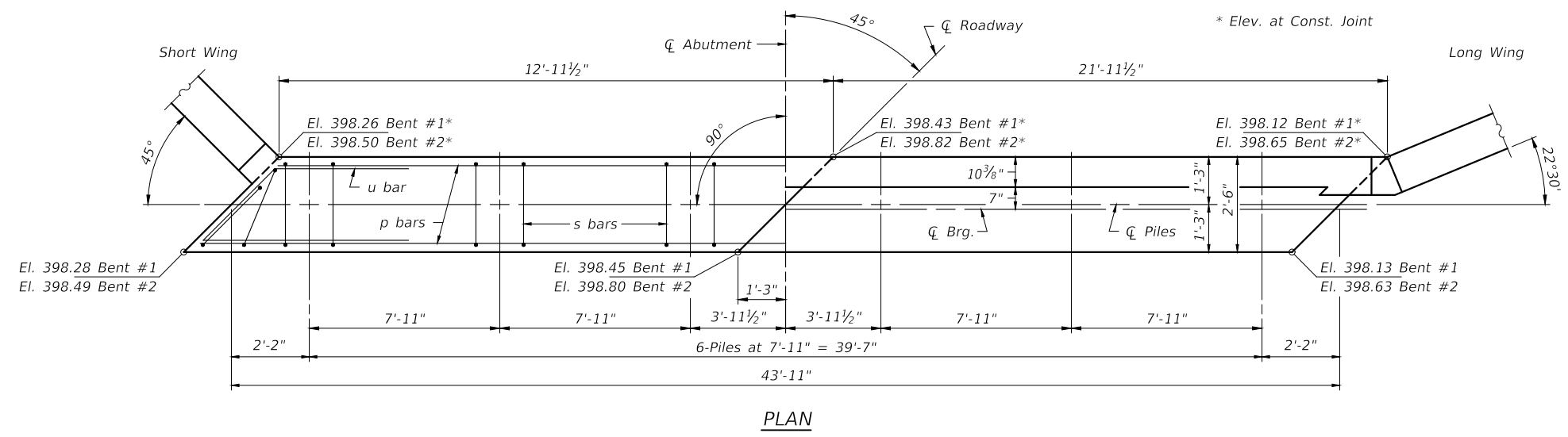


BILL OF MATERIAL

Precast Prestressed Concrete Deck Beams (33" depth)	Sq. Ft.	2,465
-----------------------------------------------------	---------	-------

33" X 36" PPC DECK BEAM DETAILS
 FAS ROUTE 902 (FOREST ROAD)
 LITTLE EAGLE CREEK
 SECTION 17-00157-00-BR
 SALINE COUNTY
 STRUCTURE NO. 083-3254

ROUTE	SECTION	COUNTY	TOTAL SHEETS	SHEET NO.
FAS 902	17-00157-00-BR	SALINE	13	7
PROJECT NO. ENT7(919)			CONTRACT NO. 99601	



BILL OF MATERIAL FOR ONE ABUTMENT

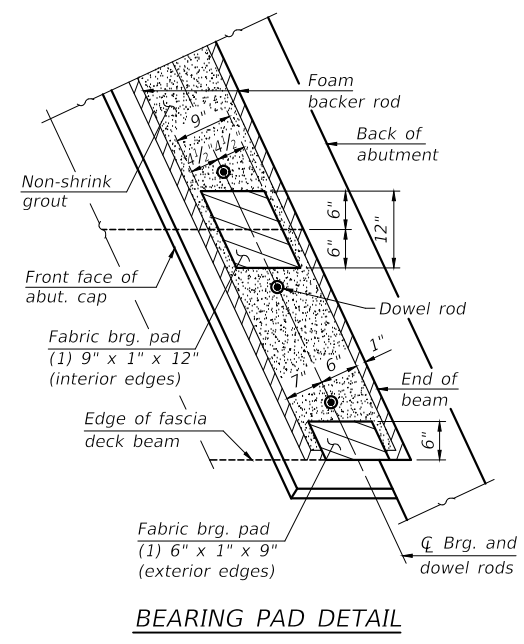
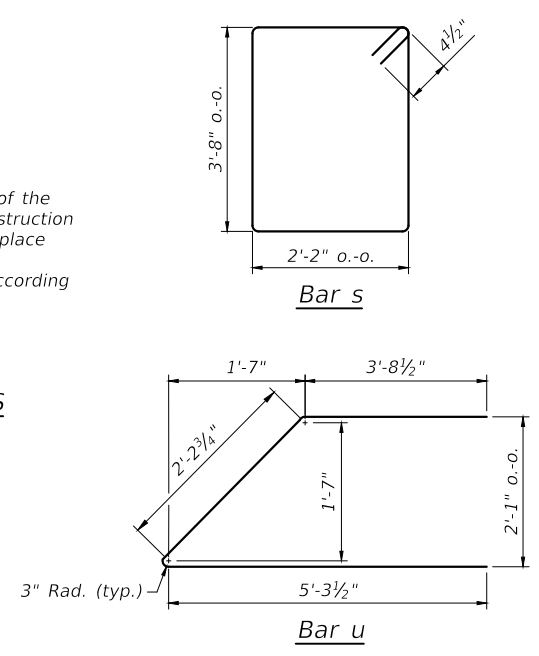
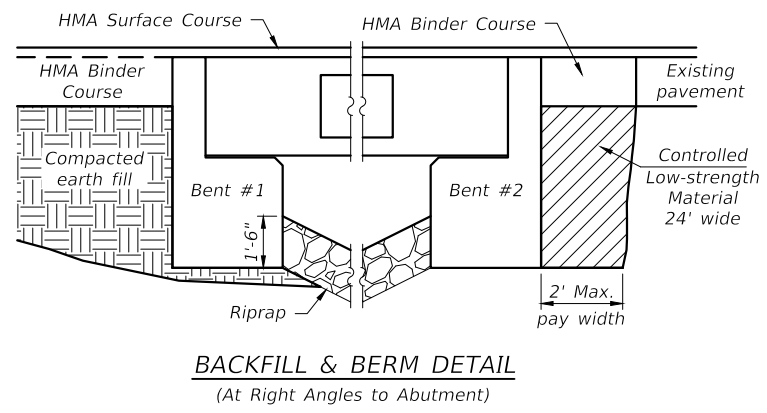
Bar	No.	Size	Length	Shape
h	14	#5	14'-4"	
h1	2	#5	14'-5"	
h2	8	#4	43'-7"	
h3	14	#4	7'-4"	
h4	2	#4	7'-7"	
p	12	#7	43'-7"	
s	46	#4	12'-5"	
u	12	#6	12'-0"	
v	10	#4	5'-0"	
v1	10	#4	5'-8"	
v2	88	#4	4'-5"	
v3	18	#4	6'-3"	
v4	8	#4	4'-11"	
Concrete Structures			25.5	Cu. Yds.
Reinforcement Bars			2,650	Lbs.

NOTES

- The Backwall and the portion of the Wingwalls above the bonded construction joint shall be cast against the in-place beam.
- Reinforcement bars shall be according to ASTM A 706, Grade 60.

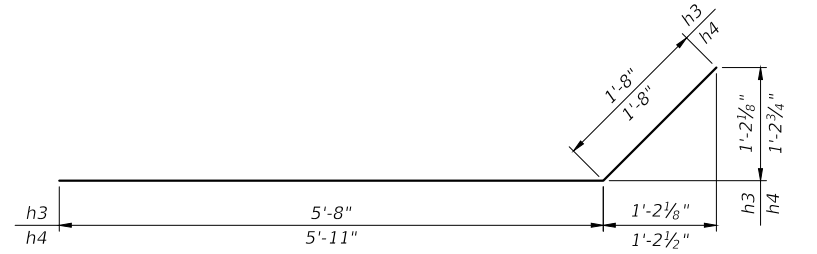
DESIGN STRESSES

f'c = 3,500 psi
fy = 60,000 psi

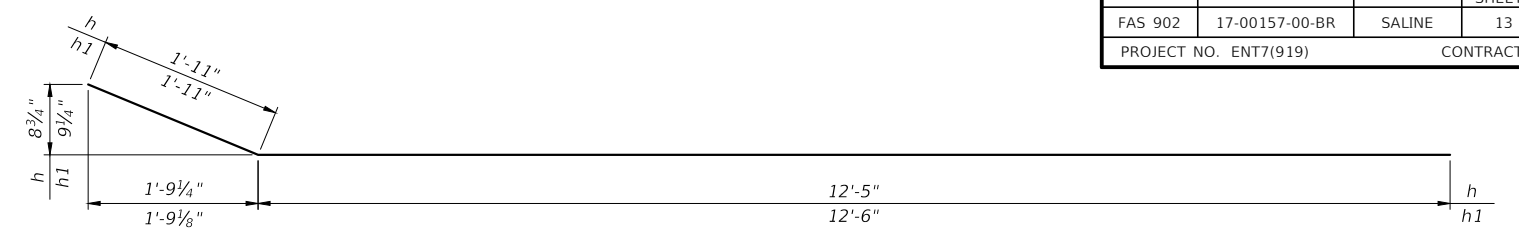


ABUTMENT
FAS ROUTE 902 (FOREST ROAD)
LITTLE EAGLE CREEK
SECTION 17-00157-00-BR
SALINE COUNTY
STRUCTURE NO. 083-3254

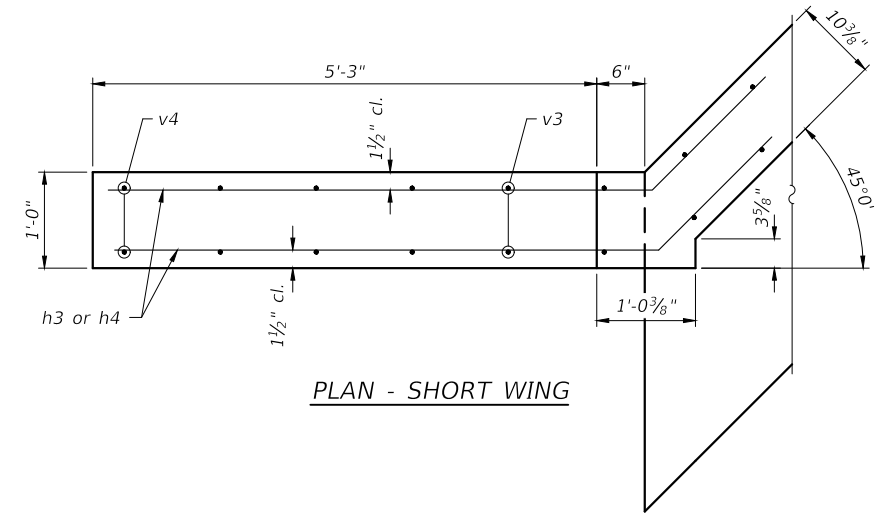
ROUTE	SECTION	COUNTY	TOTAL SHEETS	SHEET NO.
FAS 902	17-00157-00-BR	SALINE	13	8
PROJECT NO. ENT7(919)			CONTRACT NO. 99601	



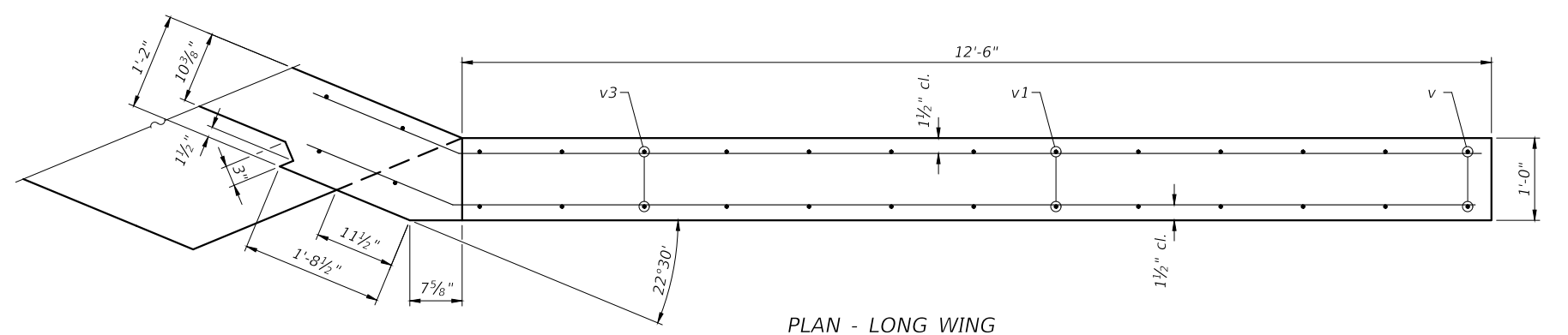
BARS h3 & h4



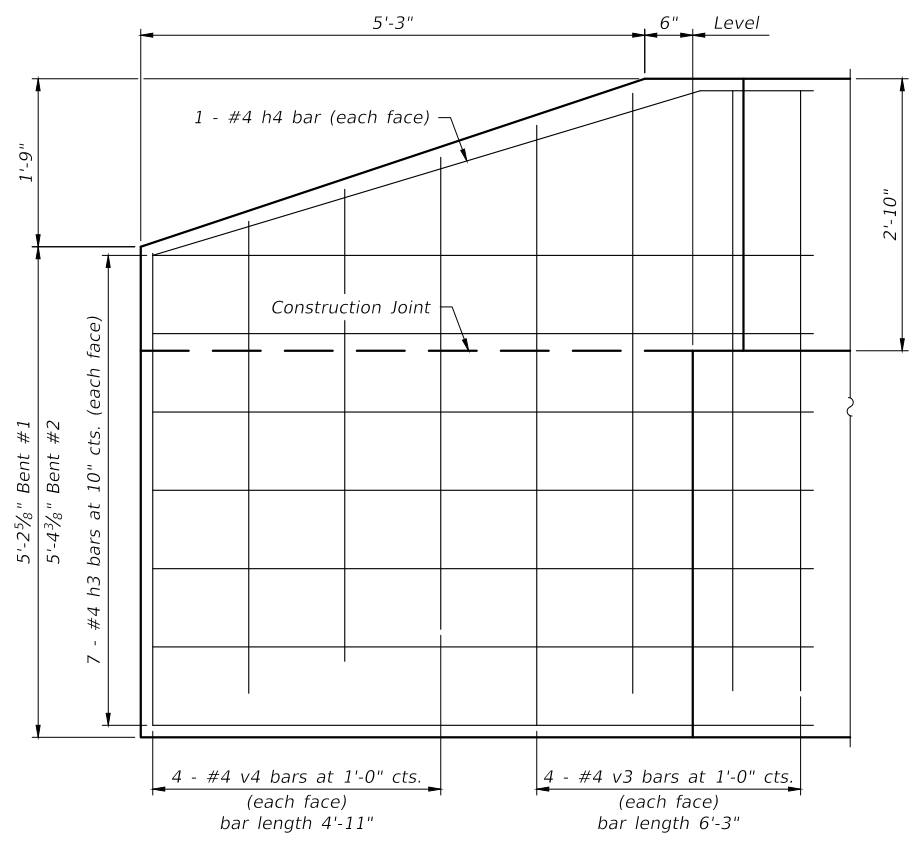
BARS h & h1



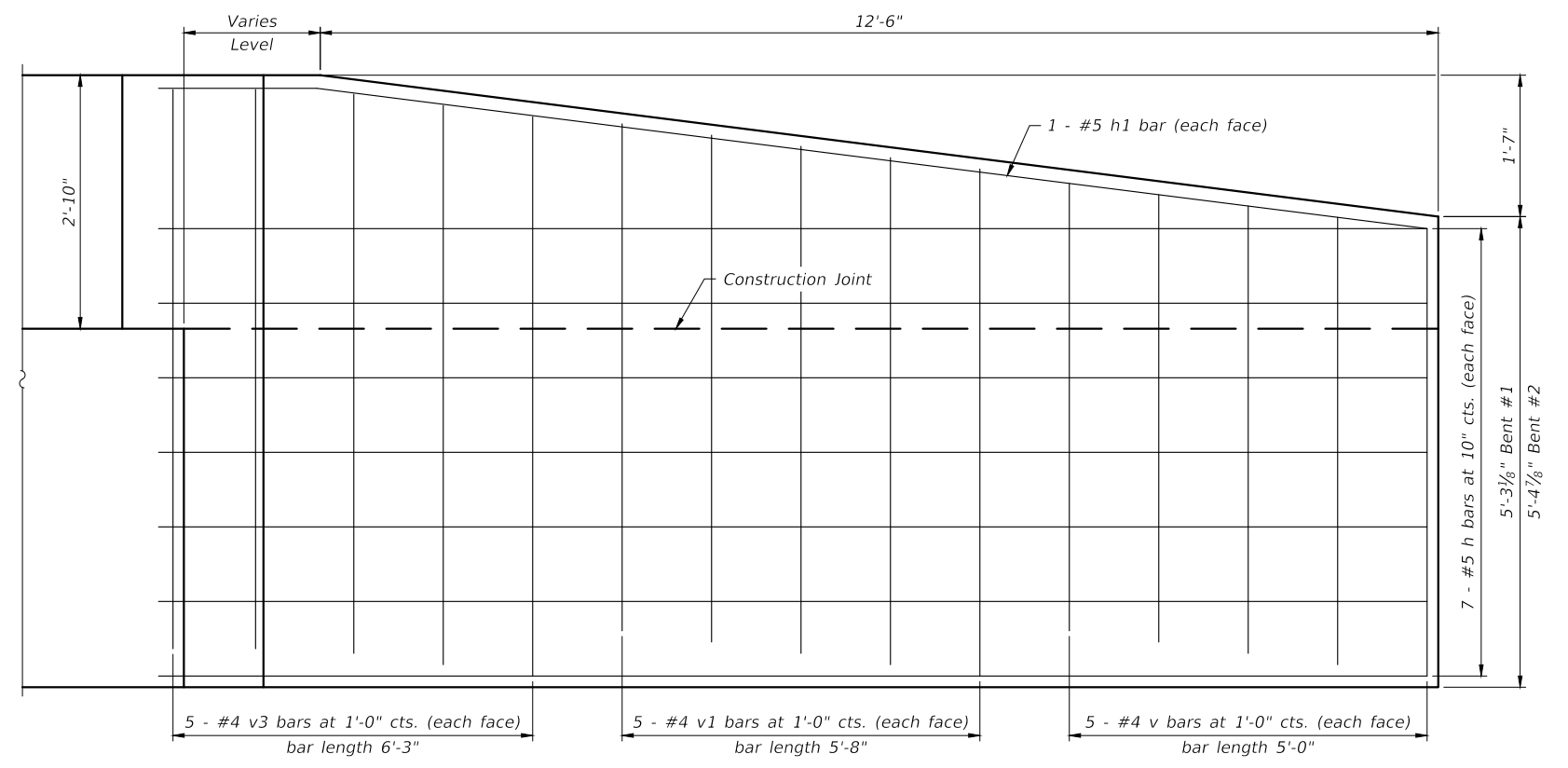
PLAN - SHORT WING



PLAN - LONG WING



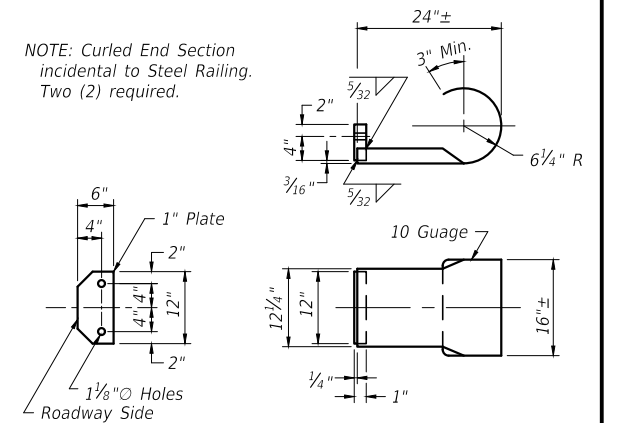
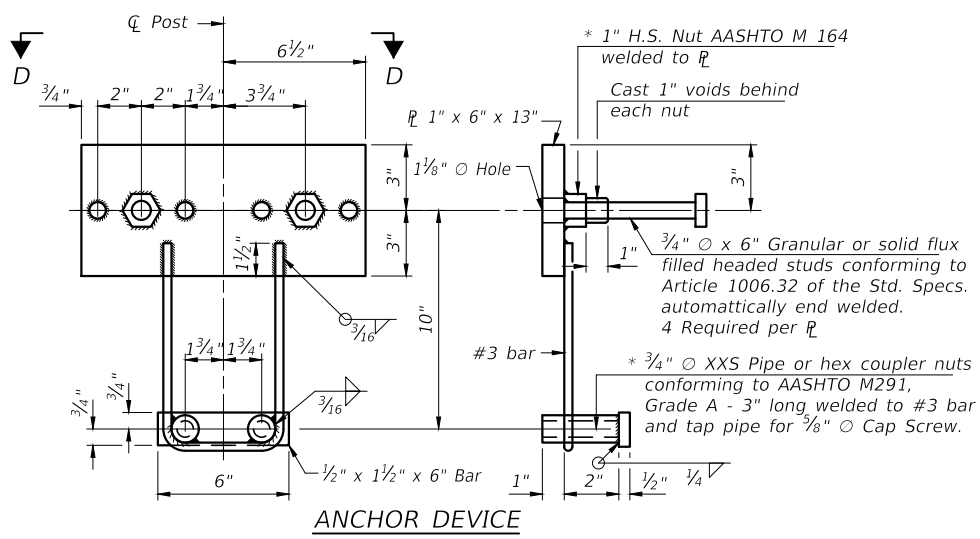
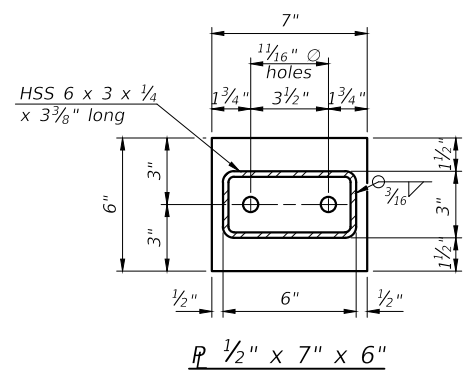
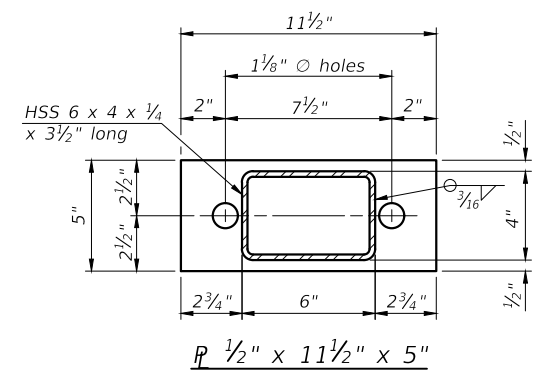
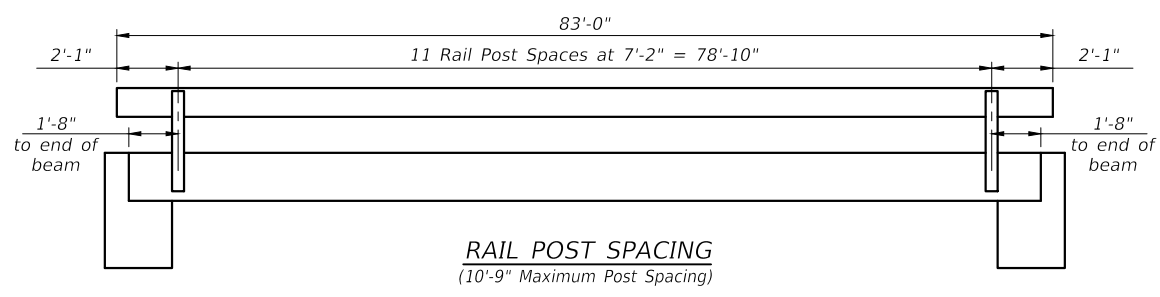
ELEVATION - SHORT WING



ELEVATION - LONG WING

ABUTMENT WING DETAILS
 FAS ROUTE 902 (FOREST ROAD)
 LITTLE EAGLE CREEK
 SECTION 17-00157-00-BR
 SALINE COUNTY
 STRUCTURE NO. 083-3254

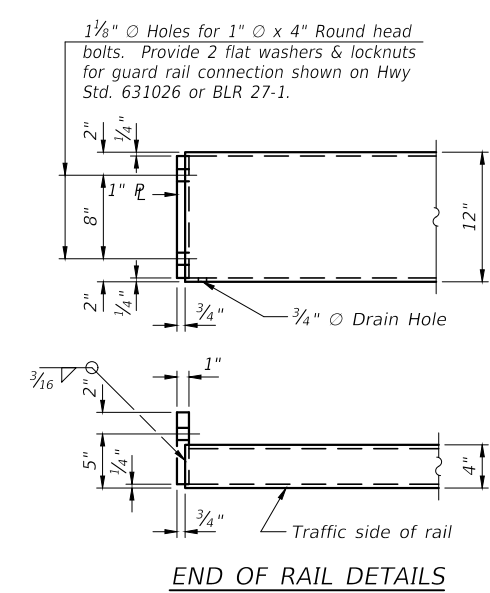
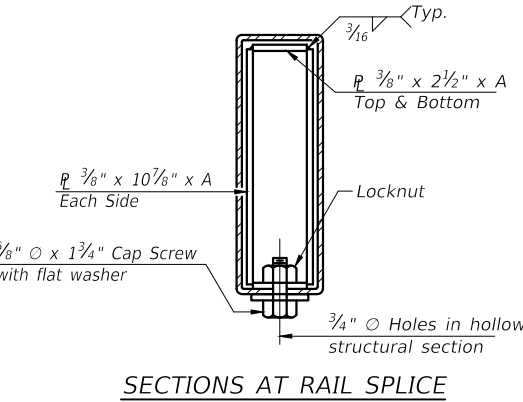
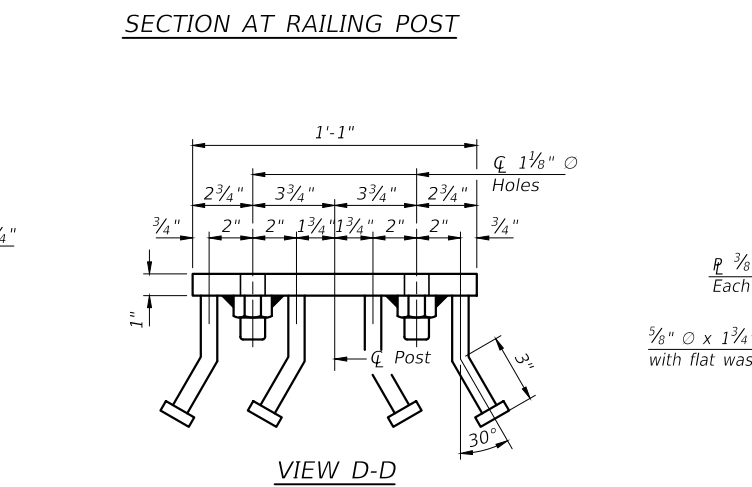
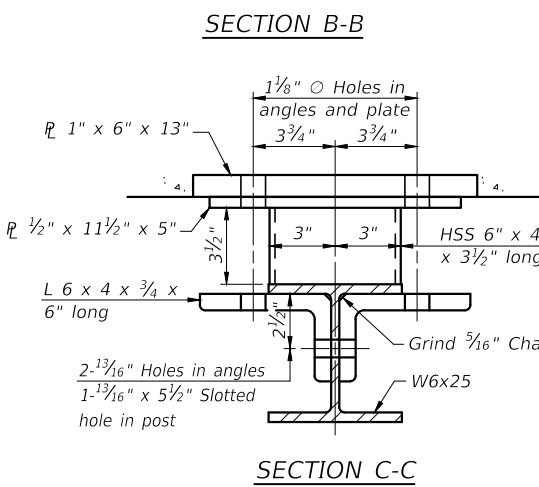
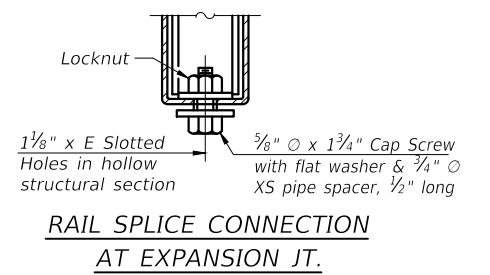
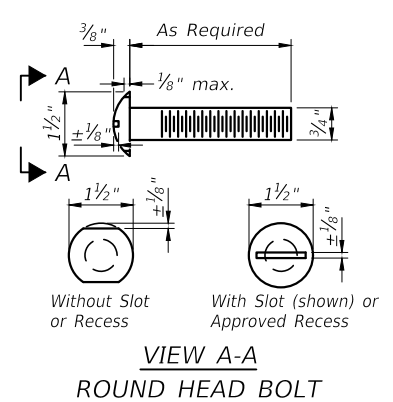
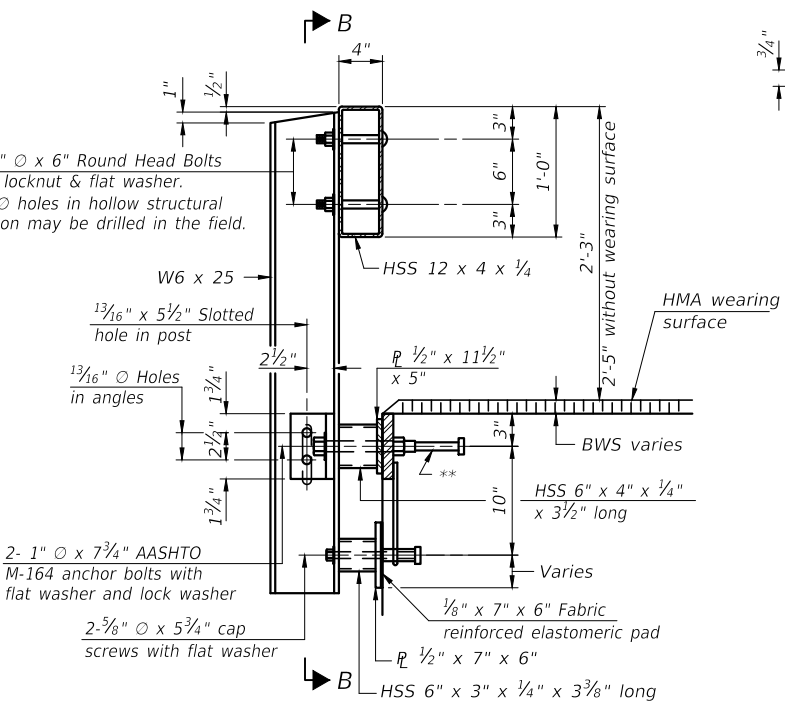
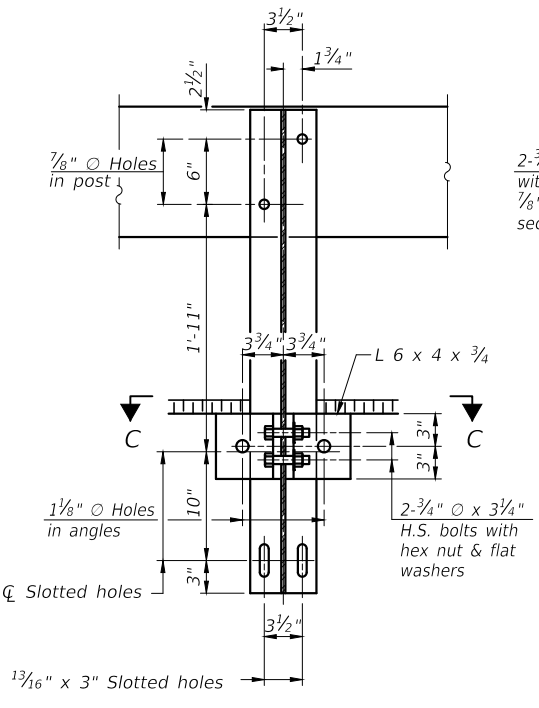
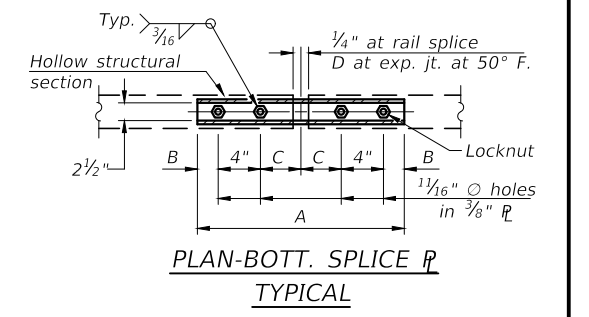
ROUTE	SECTION	COUNTY	TOTAL SHEETS	SHEET NO.
FAS 902	17-00157-00-BR	SALINE	13	9
PROJECT NO. ENT7(919)			CONTRACT NO. 99601	



SPLICE DIMENSIONS

T	D	A	B	C	E
Up to 4"	2 1/2"	1'-8"	2"	4"	2 1/2"
>4" to 6 1/2"	3 3/4"	2'-0"	2 1/2"	5 1/2"	3 1/2"
>6 1/2" to 9"	5"	2'-4"	3 1/2"	6 1/2"	9"
>9" to 13"	7"	2'-10"	4 1/2"	8 1/2"	11"
Rail Splice	1/4"	1'-8"	2"	4"	—

T = Total movement at expansion joint as shown on the design plans.



Notes:
For multi-span bridges, sufficient 1/4 x 6 x 1'-2" galvanized steel shims shall be provided to align rail between adjacent spans. Cost included with Steel Railing, Type S-1.
All steel rail elements shall be galvanized according to Article 509.05 of the Standard Specifications.

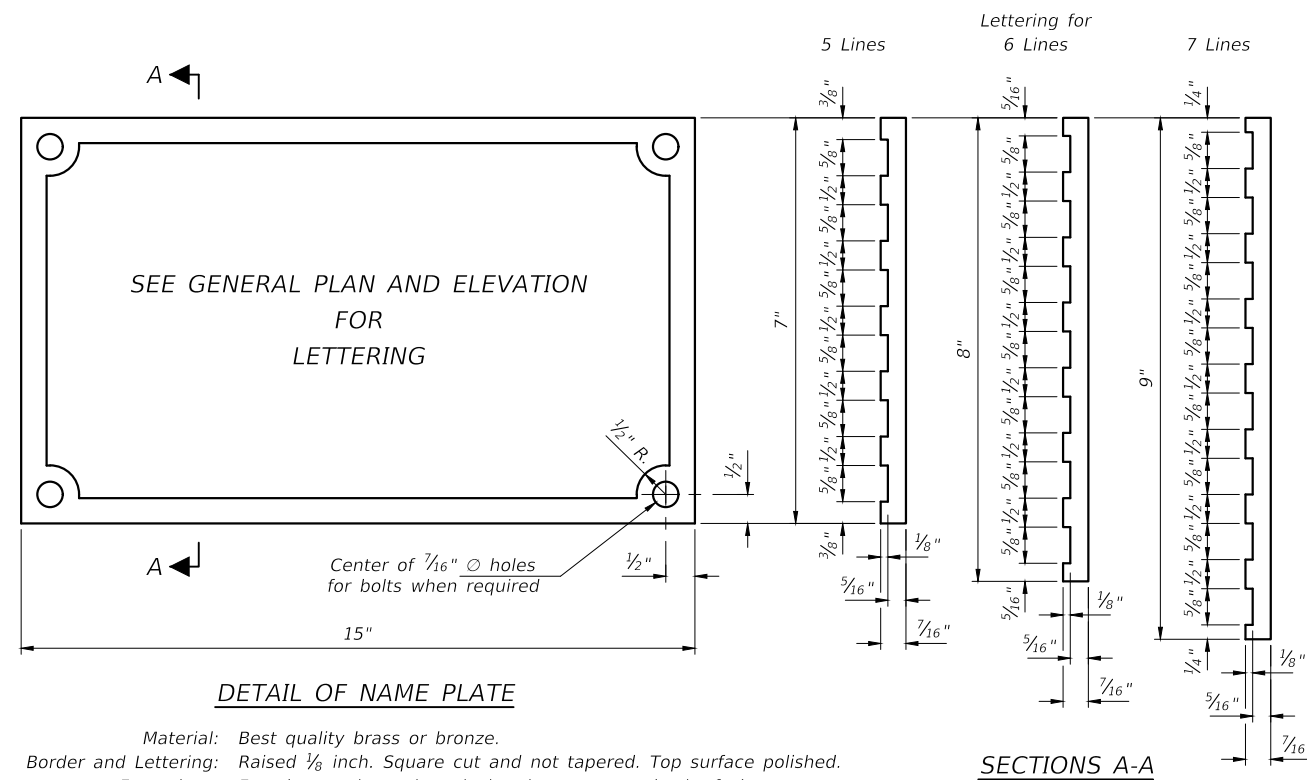
** The studs of the anchor devices shall be placed below the top reinforcement bars and the outermost longitudinal reinforcement bar shall be placed directly above the studs of the rail post anchor device. The anchorage studs may be bent down 1/2" to accommodate the top reinforcement bar placement.

BILL OF MATERIAL

Item	Unit	Quantity
Steel Railing, Type S-1	Foot	166

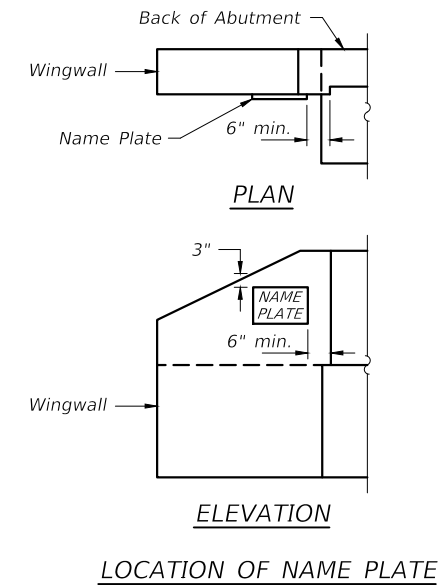
STEEL RAILING, TYPE S-1
FAS ROUTE 902 (FOREST ROAD)
LITTLE EAGLE CREEK
SECTION 17-00157-00-BR
SALINE COUNTY
STRUCTURE NO. 083-3254

ROUTE	SECTION	COUNTY	TOTAL SHEETS	SHEET NO.
FAS 902	17-00157-00-BR	SALINE	13	10
PROJECT NO. ENT7(919)			CONTRACT NO. 99601	

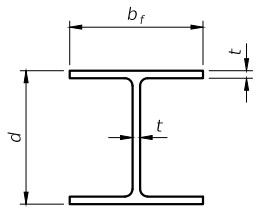


DETAIL OF NAME PLATE

Material: Best quality brass or bronze.
 Border and Lettering: Raised $\frac{1}{8}$ inch. Square cut and not tapered. Top surface polished.
 Fastenings: Four lugs at least three inches long, cast on back of plate.



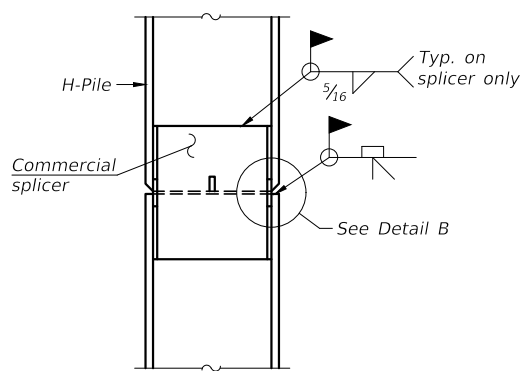
NAME PLATE
 FAS ROUTE 902 (FOREST ROAD)
 LITTLE EAGLE CREEK
 SECTION 17-00157-00-BR
 SALINE COUNTY
 STRUCTURE NO. 083-3254



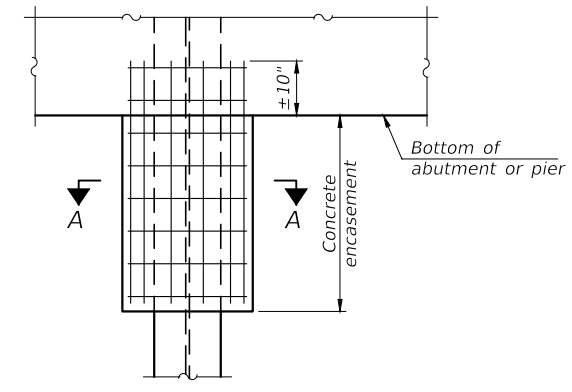
STEEL PILE TABLE

Designation	Depth d	Flange width b _f	Web and Flange thickness t	Encasement diameter A	Encasement Quantity/Ft. C.Y.
HP 14x117	14 1/4"	14 7/8"	1 3/16"	30"	0.173
x102	14"	14 3/4"	1 1/16"	30"	0.174
x89	13 7/8"	14 3/4"	5/8"	30"	0.175
x73	13 3/8"	14 3/8"	1/2"	30"	0.176
HP 12x84	12 1/4"	12 1/4"	1 1/16"	24"	0.110
x74	12 1/8"	12 1/4"	5/8"	24"	0.111
x63	12"	12 1/8"	1/2"	24"	0.112
x53	11 3/4"	12"	7/16"	24"	0.112
HP 10x57	10"	10 1/4"	9/16"	24"	0.112
x42	9 3/4"	10 1/8"	7/16"	24"	0.113
HP 8x36	8"	8 1/8"	7/16"	18"	0.063

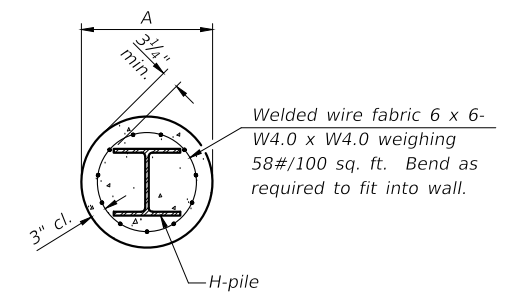
Note: The steel H-piles shall be according to AASHTO M270 Grade 50.



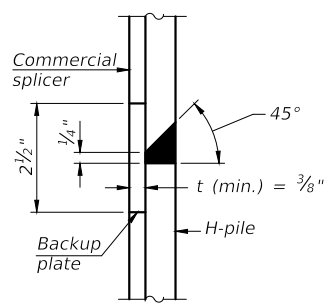
ELEVATION



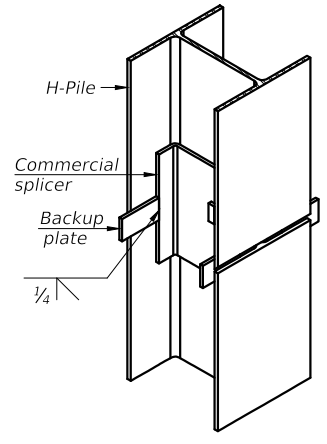
ELEVATION



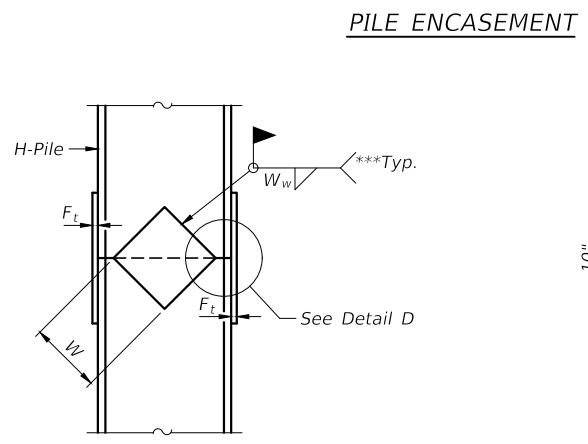
SECTION A-A



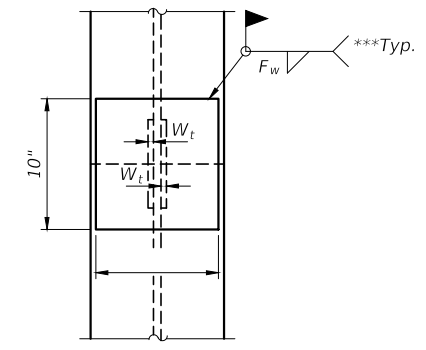
DETAIL "B"



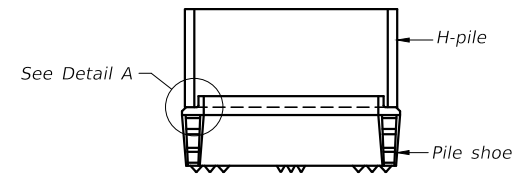
ISOMETRIC VIEW



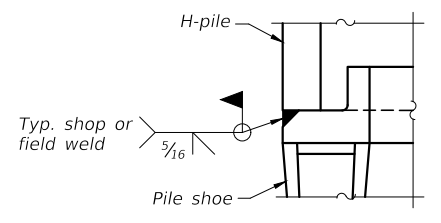
ELEVATION



END VIEW

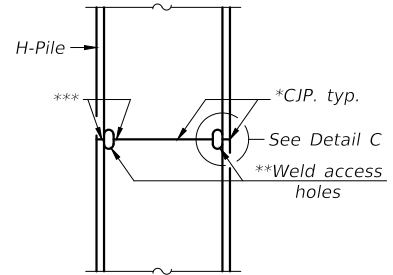


ELEVATION

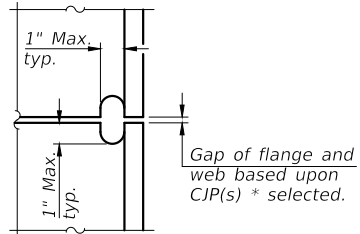


DETAIL A

H-PILE SHOE ATTACHMENT



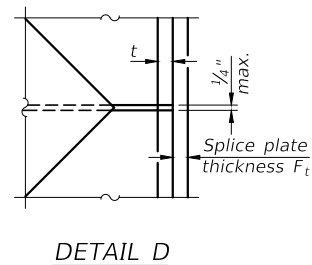
ELEVATION



DETAIL C

COMPLETE PENETRATION WELD SPLICE

* Use joint conforming to Fig. 3.4 in AWS D1.1. Structure Welding Code - Steel.
 ** Preparation per Fig. 5.2 in AWS D1.1. Structure Welding Code - Steel.
 *** Interrupt welds 1/4" from end of each pile.



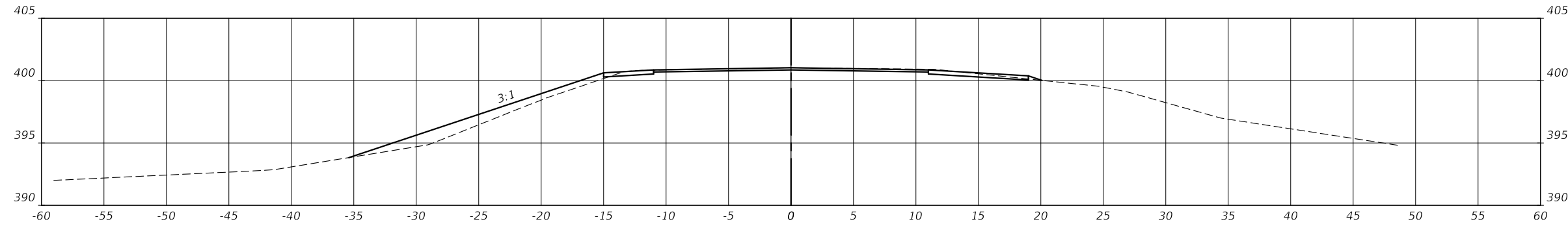
DETAIL D

WELDED PLATE FIELD SPLICE

Designation	F	F _t	F _w	W	W _t	W _w
HP 14x117	12 1/2"	1"	7/8"	7 3/4"	5/8"	1/2"
x102	12 1/2"	7/8"	3/4"	7 3/4"	5/8"	1/2"
x89	12 1/2"	3/4"	11/16"	7 3/4"	5/8"	1/2"
x73	12 1/2"	5/8"	9/16"	7 3/4"	5/8"	1/2"
HP 12x84	10"	7/8"	1 1/16"	6 1/2"	5/8"	1/2"
x74	10"	7/8"	1 1/16"	6 1/2"	5/8"	1/2"
x63	10"	5/8"	1/2"	6 1/2"	1/2"	3/8"
x53	10"	5/8"	1/2"	6 1/2"	1/2"	3/8"
HP 10x57	8"	3/4"	9/16"	5 1/4"	1/2"	3/8"
x42	8"	5/8"	9/16"	5 1/4"	1/2"	3/8"
HP 8x36	7"	5/8"	7/16"	4 1/4"	1/2"	3/8"

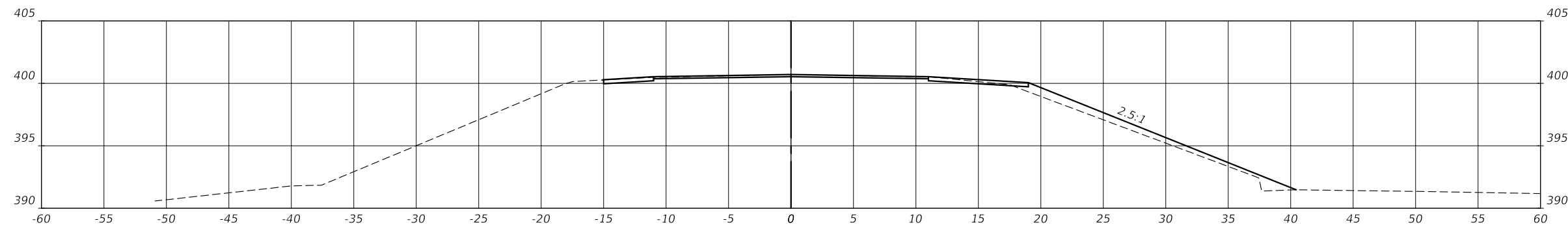
PILING DETAILS
 FAS ROUTE 902 (FOREST ROAD)
 LITTLE EAGLE CREEK
 SECTION 17-00157-00-BR
 SALINE COUNTY
 STRUCTURE NO. 083-3254

ROUTE	SECTION	COUNTY	TOTAL SHEETS	SHEET NO.
FAS 902	17-00157-00-BR	SALINE	13	12
PROJECT NO. ENT7(919)			CONTRACT NO. 99601	



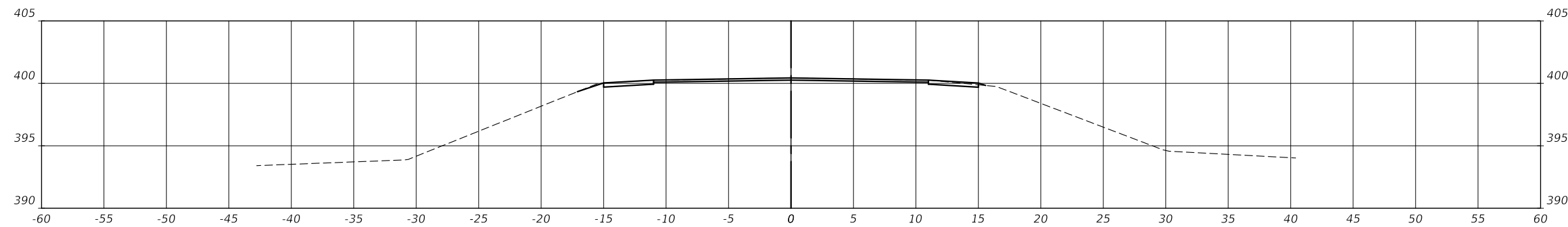
STATION 32+00

Cut Area: 2.90
Fill Area: 13.22



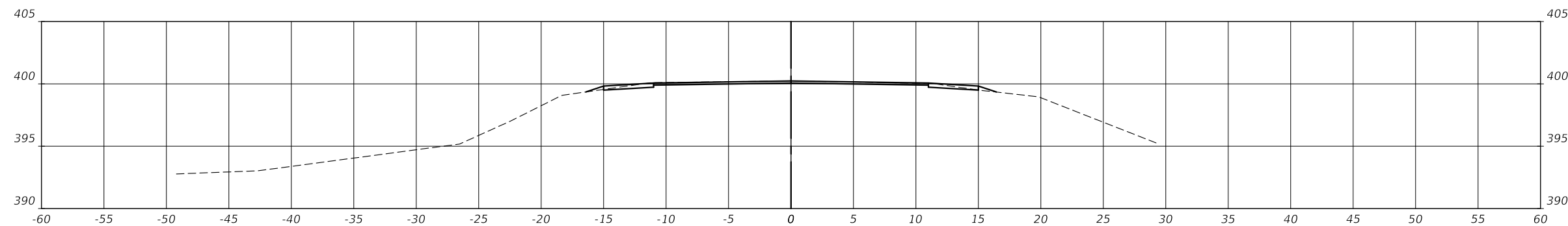
STATION 31+50

Cut Area: 2.47
Fill Area: 11.11



STATION 31+00

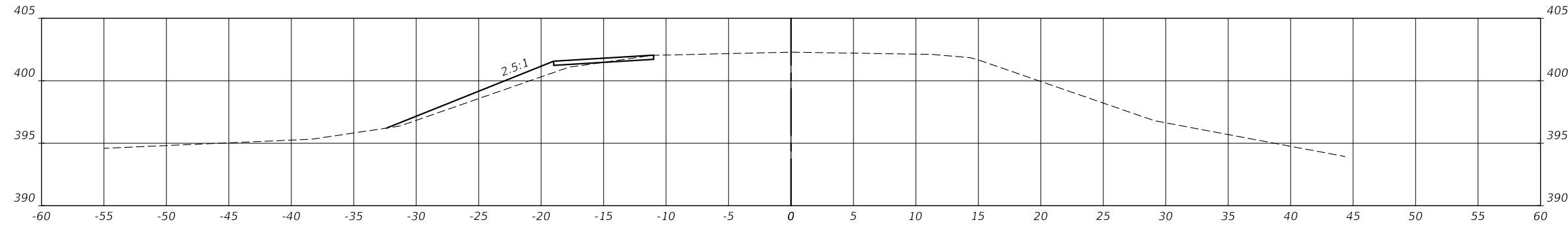
Cut Area: 2.45
Fill Area: 0.04



STATION 30+50

Cut Area: 1.58
Fill Area: 0.43

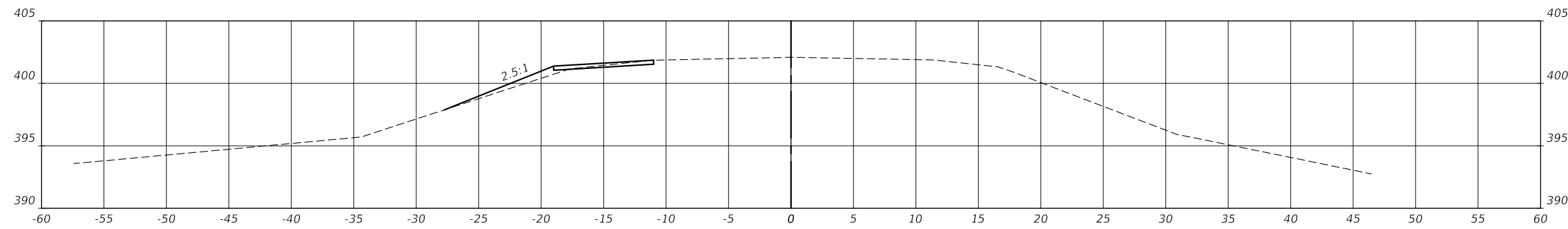
ROUTE	SECTION	COUNTY	TOTAL SHEETS	SHEET NO.
FAS 902	17-00157-00-BR	SALINE	13	13
PROJECT NO. ENT7(919)			CONTRACT NO. 99601	



STATION 34+50

Cut Area: 0.68

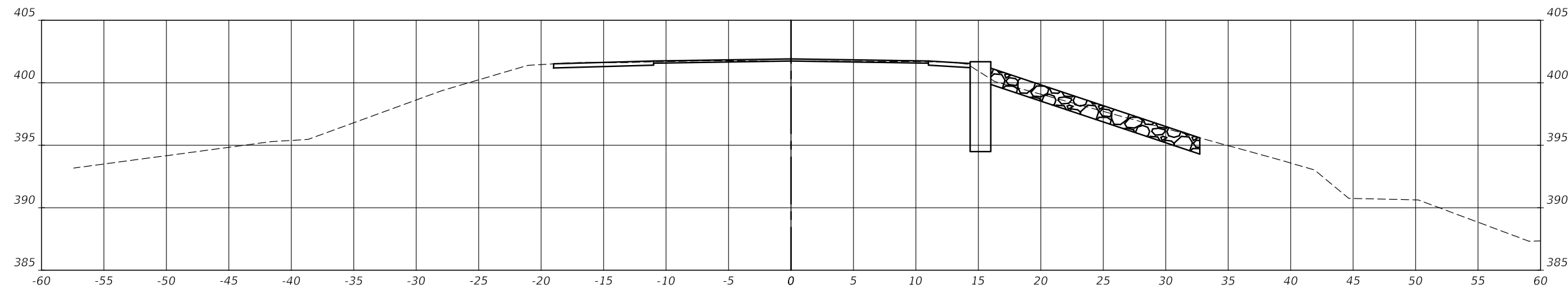
Fill Area: 8.14



STATION 34+00

Cut Area: 1.21

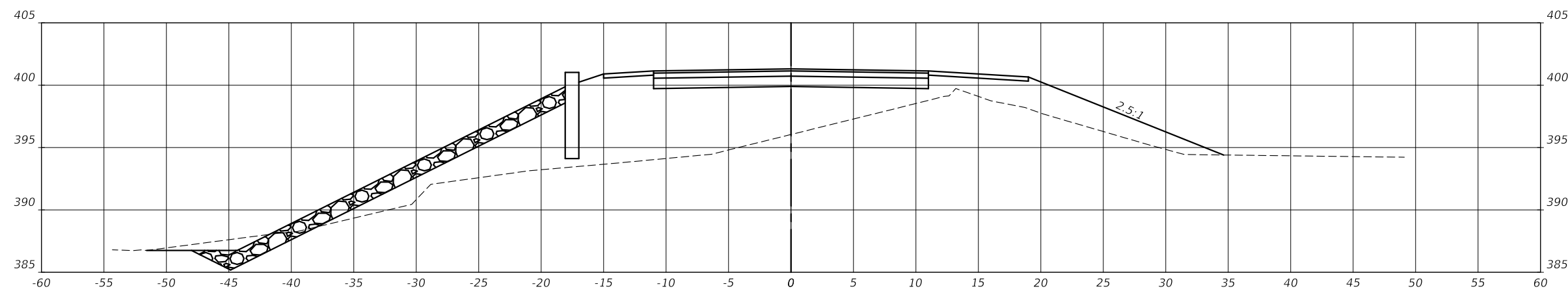
Fill Area: 3.03



STATION 33+50

Cut Area: 3.43

Fill Area: 0.00



STATION 32+32

Cut Area: 4.69

Fill Area: 215.76