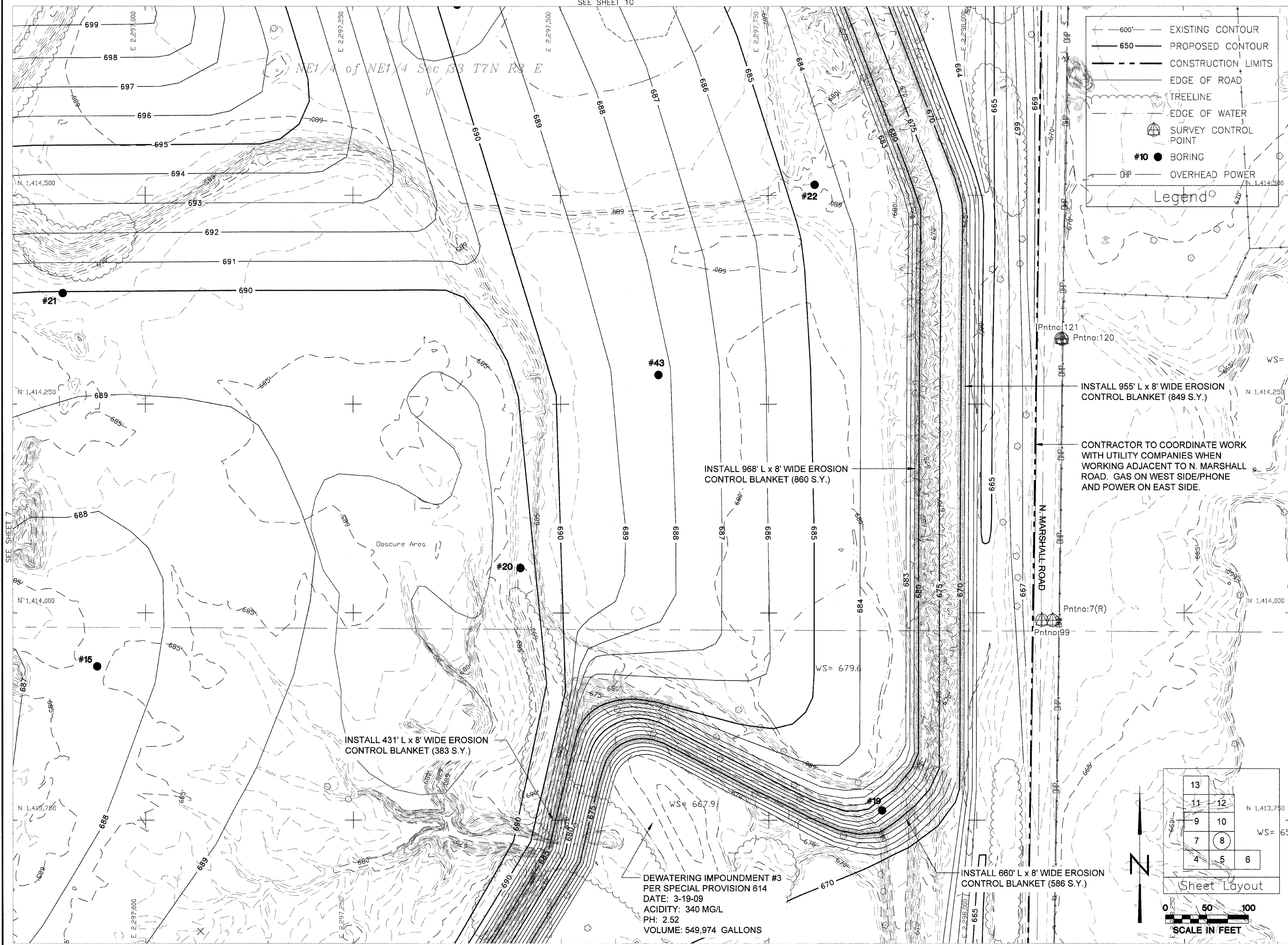


NE1/4 of NE1/4 Sec 33 T7N R3 E

Legend

- 600' --- EXISTING CONTOUR
- 650' --- PROPOSED CONTOUR
- - - - - CONSTRUCTION LIMITS
- — — — — EDGE OF ROAD
- ~~~~~ TREELINE
- - - - - EDGE OF WATER
- ⊕ SURVEY CONTROL POINT
- #10 BORING
- OHP — OVERHEAD POWER



INSTALL 955' L x 8' WIDE EROSION CONTROL BLANKET (849 S.Y.)

CONTRACTOR TO COORDINATE WORK WITH UTILITY COMPANIES WHEN WORKING ADJACENT TO N. MARSHALL ROAD. GAS ON WEST SIDE/PHONE AND POWER ON EAST SIDE.

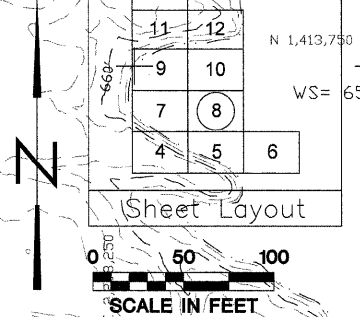
INSTALL 968' L x 8' WIDE EROSION CONTROL BLANKET (860 S.Y.)

INSTALL 431' L x 8' WIDE EROSION CONTROL BLANKET (383 S.Y.)

DEWATERING IMPOUNDMENT #3
 PER SPECIAL PROVISION 614
 DATE: 3-19-09
 ACIDITY: 340 MG/L
 PH: 2.52
 VOLUME: 549,974 GALLONS

Sheet Layout

13		
11	12	
9	10	
7	8	
4	5	6



SEE SHEET 7

SEE SHEET 5