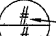



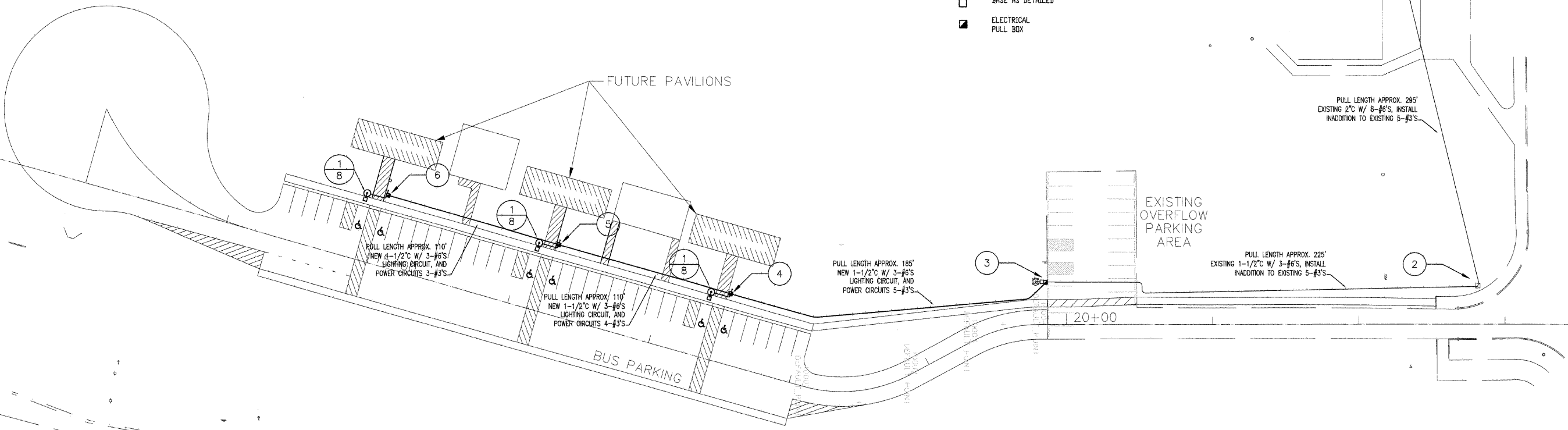


**ELECTRICAL NOTE AND TAG LEGEND**

-  DETAIL TAG  
DETAIL NUMBER  
SHEET DETAIL IS SHOWN ON
-  ELECTRICAL CONSTRUCTION NOTE
-  FIXTURE, POLE AND  
BASE AS DETAILED
-  ELECTRICAL  
PULL BOX

1



**# TAGGED ELECTRICAL CONSTRUCTION NOTES:**

1. EXISTING LEWIS AND CLARK VISITORS CENTER. CIRCUITS ORIGINATE IN ELECTRICAL ROOM. EXISTING PANEL "LP" (FIELD VERIFY). FURNISH ALL LABOR AND MATERIAL AS REQUIRED TO INSTALL (3) 1P20A CIRCUIT BREAKERS IN A 120/208V PANEL WITH AVAILABLE SPACE. EXTEND NEW 5-#3'S POWER CIRCUITS IN EXISTING 2" SITE LIGHTING CONDUIT WITH EXISTING 6-#6'S TO SERVE NEW FUTURE PAVILIONS. SEE ONE LINE DIAGRAM. UPDATE PANEL INDEX.
2. EXISTING PULL BOX. CONTINUE NEW 5-#3'S POWER CIRCUITS THROUGH PULL BOX TO NEW PULL BOX "PB-1" AT BASE OF EXISTING POLE.
3. INTERCEPT EXISTING CONDUIT NEAR BASE OF POLE AND INSTALL NEW PULL BOX "PB-1". REWORK LIGHTING CIRCUIT AND EXTEND TO RECONNECT EXISTING SITE LIGHTING POLE, FEEDING FROM EXISTING CIRCUIT. EXTEND EXISTING LIGHTING CIRCUIT WITH NEW 3-#6'S AND NEW 5-#3'S POWER CIRCUITS IN NEW 1-1/2" CONDUIT TO PULL BOX "PB-2".
4. INSTALL NEW PULL BOX "PB-2". TAP LIGHTING CIRCUIT AND EXTEND TO NEW SITE LIGHTING POLE USING 3-#10'S, 1" C. LOOP ALL CIRCUITS. TERMINATE ONE POWER CIRCUIT AND EXTEND NEW LIGHTING CIRCUIT AND 4-#3'S POWER CIRCUITS IN NEW 1-1/2" CONDUIT TO PULL BOX "PB-3".
5. INSTALL NEW PULL BOX "PB-3". TAP LIGHTING CIRCUIT AND EXTEND TO NEW SITE LIGHTING POLE USING 3-#10'S, 1" C. LOOP ALL CIRCUITS. TERMINATE ONE POWER CIRCUIT AND EXTEND NEW LIGHTING CIRCUIT AND 3-#3'S POWER CIRCUITS IN NEW 1-1/2" CONDUIT TO PULL BOX "PB-4".
6. INSTALL NEW PULL BOX "PB-4". TAP LIGHTING CIRCUIT AND EXTEND TO NEW SITE LIGHTING POLE USING 3-#10'S, 1" C. LOOP ALL CIRCUITS. TERMINATE POWER CIRCUIT.

**GENERAL ELECTRICAL CONSTRUCTION NOTES:**

- 1) CONTRACTOR SHALL CUT AND PATCH AS REQUIRED DURING THE COURSE OF INSTALLATION OR AS SPECIFIED ON THE DRAWINGS.
- 2) ALL NEW ELECTRICAL WORK SHALL BE INSTALLED IN ACCORDANCE WITH THE LATEST EDITION OF THE NATIONAL ELECTRICAL CODE AND ALL OTHER LOCAL, STATE AND NATIONAL CODES WHICH APPLY AS INTERPRETED I.D.O.T..
- 3) ALL WORK IS TO BE COORDINATED WITH ALL OTHER TRADES ON THIS PROJECT AND ELECTRICAL WORK INSTALLED IN A NEAT AND ORDERLY FASHION.
- 4) THE ELECTRICAL DRAWINGS ARE SCHEMATIC AND SHOW THE GENERAL ARRANGEMENT OF EQUIPMENT. THE DRAWINGS SHALL NOT BE SCALED TO DETERMINE EQUIPMENT CONNECTION OR ROUGH-IN. REFER TO EQUIPMENT CUT-SHEETS AND RESPONSIBLE TRADES.
- 5) ALL CONDUCTORS OF THE ELECTRICAL SYSTEM SHALL BE COPPER, 600V, XLP - TYPE USE.
- 6) ALL CONDUIT SHALL BE MINIMUM 3/4" TRADE SIZE, EMT WHEN INSTALLED INDOORS IN DRY LOCATIONS, RMC WHEN INSTALLED OUTDOOR OR INDOORS IN DAMP/WET LOCATIONS, RMC, LFNC WHEN EXPOSED OUTDOORS AND, RMC OR RMC-40 WHEN INSTALLED IN CONCRETE OR BELOW GRADE. FINAL CONNECTIONS TO ALL EQUIPMENT, WHICH PRODUCE VIBRATION SHALL BE WITH FLEXIBLE NON-METALIC CONDUIT SUITABLE FOR THE SURROUNDING ENVIRONMENT. CONDUIT TURNING UP FROM BELOW GRADE OR FROM WITHIN CONCRETE SHALL BE RMC.
- 7) RACEWAY FILL, WHEN RACEWAY SIZE IS NOT SPECIFICALLY INDICATED, SHALL BE BASED ON APPLICABLE ARTICLES OF THE NEC.
- 8) CIRCUIT ROUTING, IN GENERAL, IS NOT SPECIFIED UNLESS SPECIFIC REQUIREMENTS EXIST. ROUTING OF CIRCUITS WILL HAVE EFFECTS ON CIRCUIT VOLTAGE DROPS. CONTRACTOR SHALL COORDINATE ROUTING LENGTH WITH CONNECTED LOAD AND ADJUST CONDUCTOR SIZE FOR A VOLTAGE DROP LESS THAN 3%.
- 9) ALL CONDUITS SHALL BE INSTALLED CONCEALED IN SPACES OF NEW CONSTRUCTION, WHICH ARE TYPICALLY OCCUPIED. CONTRACTOR SHALL COORDINATE THE LOCATION OF ALL EQUIPMENT WITH EXISTING CONDITIONS TO MAINTAIN ACCESS REQUIRED BY THE N.E.C. AND EQUIPMENT MANUFACTURERS.
- 10) SERVICE VOLTAGE AND ELECTRICAL REQUIREMENTS OF ALL EQUIPMENT SHALL BE VERIFIED BY THE CONTRACTOR PRIOR TO ELECTRICAL ROUGH-IN. DISCREPANCIES BETWEEN THE ELECTRICAL DRAWINGS AND EQUIPMENT REQUIREMENTS SHALL BE REPORTED TO THE ENGINEER BEFORE ANY ASSOCIATED WORK IS INSTALLED.
- 13) INDEXES OF ELECTRICAL PANELS SHALL BE REVISED TO REFLECT COMPLETED WORK.
- 15) CONTRACTOR SHALL REFERENCE THE PROJECT SITE PLANS FOR ELECTRIC, TELEPHONE, CABLE T.V. AND ALL OTHER UTILITIES. EXECUTION OF NEW WORK SHALL BE COMPLETED TO AVOID AND PROTECT EXISTING UTILITIES. ANY DAMAGE TO EXISTING UTILITIES AS THE RESULT OF THIS PROJECT SHALL BE REPAIRED OR REPLACED BY THE CONTRACTOR NO COST TO THE DEPARTMENT.
- 16) ALL CIRCUIT IN EACH PULL BOX SHALL BE TAGGED TO INDICATE VOLTAGE CLASS, USE, PANEL AND CIRCUIT DESIGNATION. TAGS SHALL BE SUITABLE FOR DIRECT BURIAL, WEATHERPROOF.

**SCHEDULE OF ITEMS FOR LIGHTING UNIT COMPLETE:**

Item:	Qty.	Unit
CONDUIT IN TRENCH, 1 1/2" DIA., PVC	430	ft
CONDUIT IN TRENCH, 1" DIA., PVC	35	ft
HEAVY-DUTY HANDHOLE	4	ea
ELECTRIC CABLE IN CONDUIT, 600V (XLP-TYPE USE) 1/C NO. 6	1400	ft
ELECTRIC CABLE IN CONDUIT, 600V (XLP-TYPE USE) 1/C NO. 3	4900	ft
TRENCH AND BACKFILL FOR ELECTRICAL WORK	465	ft
LIGHTING UNIT	3	ea