

INDEX OF SHEETS

FOR INDEX OF SHEETS, SEE SHEET NO. 2

DAN RYAN EXPRESSWAY:	ADT (2010)	DESIGN SPEED	POSTED SPEED
NB I-94 (DAN RYAN)	151,806	60 MPH	55 MPH
SB I-94 (DAN RYAN)	140,500	60 MPH	55 MPH
NB I-94 (BISHOP FORD)	94,200	60 MPH	55 MPH
NB I-57	58,000	60 MPH	55 MPH
SB I-57	69,390	60 MPH	55 MPH
NB 75TH STREET C-D ENTRANCE RAMP	11,300	45 MPH	40 MPH
SB 75TH STREET C-D EXIT RAMP	7,985	45 MPH	40 MPH
NB 71ST STREET C-D EXIT RAMP	6,600	45 MPH	40 MPH
SB 71ST STREET C-D ENTRANCE RAMP	9,145	45 MPH	40 MPH
SB WENTWORTH AVENUE EXIT RAMP	4,770	45 MPH	40 MPH

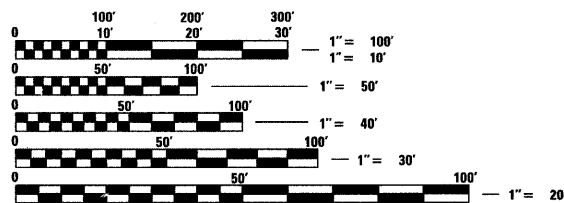
MAJOR CROSS STREETS AND FRONTAGE ROADS:

	ADT	POSTED SPEED
E. 95TH STREET	23,800	30 MPH
W. 95TH STREET	23,800	30 MPH
E. 75TH STREET	17,700	30 MPH
E. 71ST STREET	10,500	30 MPH
W. 71ST STREET	15,600	30 MPH
S. STATE STREET	15,100	30 MPH
S. LAFAYETTE AVENUE	6,800	30 MPH

DESCRIPTION OF PROJECT

INSTALLATION OF FENCING ON FLUTED KNEE WALLS AND AT OTHER LOCATIONS WITHIN THE PROJECT LIMITS.

PROJECT LOCATED IN THE CITY OF CHICAGO



FULL SIZE PLANS HAVE BEEN PREPARED USING STANDARD ENGINEERING SCALES; REDUCED SIZED PLANS WILL NOT CONFORM TO STANDARD SCALES. IN MAKING MEASUREMENTS ON REDUCED PLANS, THE ABOVE SCALES MAY BE USED

DIGGER:
CHICAGO UTILITY ALERT NETWORK
(312) 744-7000

CTA CONTACT:
DAVID HEARD,
MANAGER, CONSTRUCTION
MANAGEMENT OVERSIGHT
(312) 681-3862

CONTRACT NO. 60A07

STATE OF ILLINOIS
DEPARTMENT OF TRANSPORTATION
DIVISION OF HIGHWAYS

PROPOSED HIGHWAY PLANS

F.A.I. ROUTE 94 (DAN RYAN EXPRESSWAY)

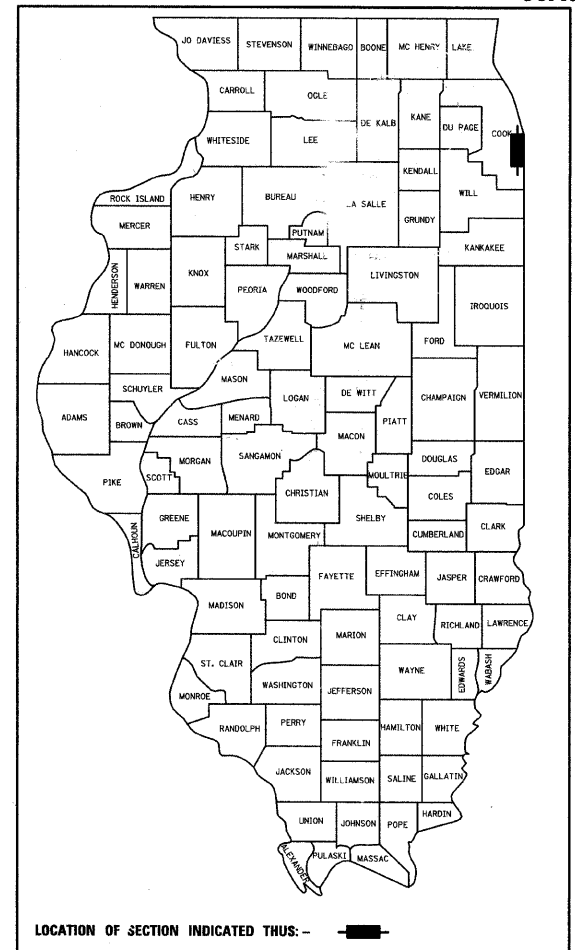
SECTION 2005-036 I

INSTALLATION OF FENCING AND GATES ON FLUTED
KNEE WALLS AND OTHER LOCATIONS FROM I-57 TO 71ST STREET

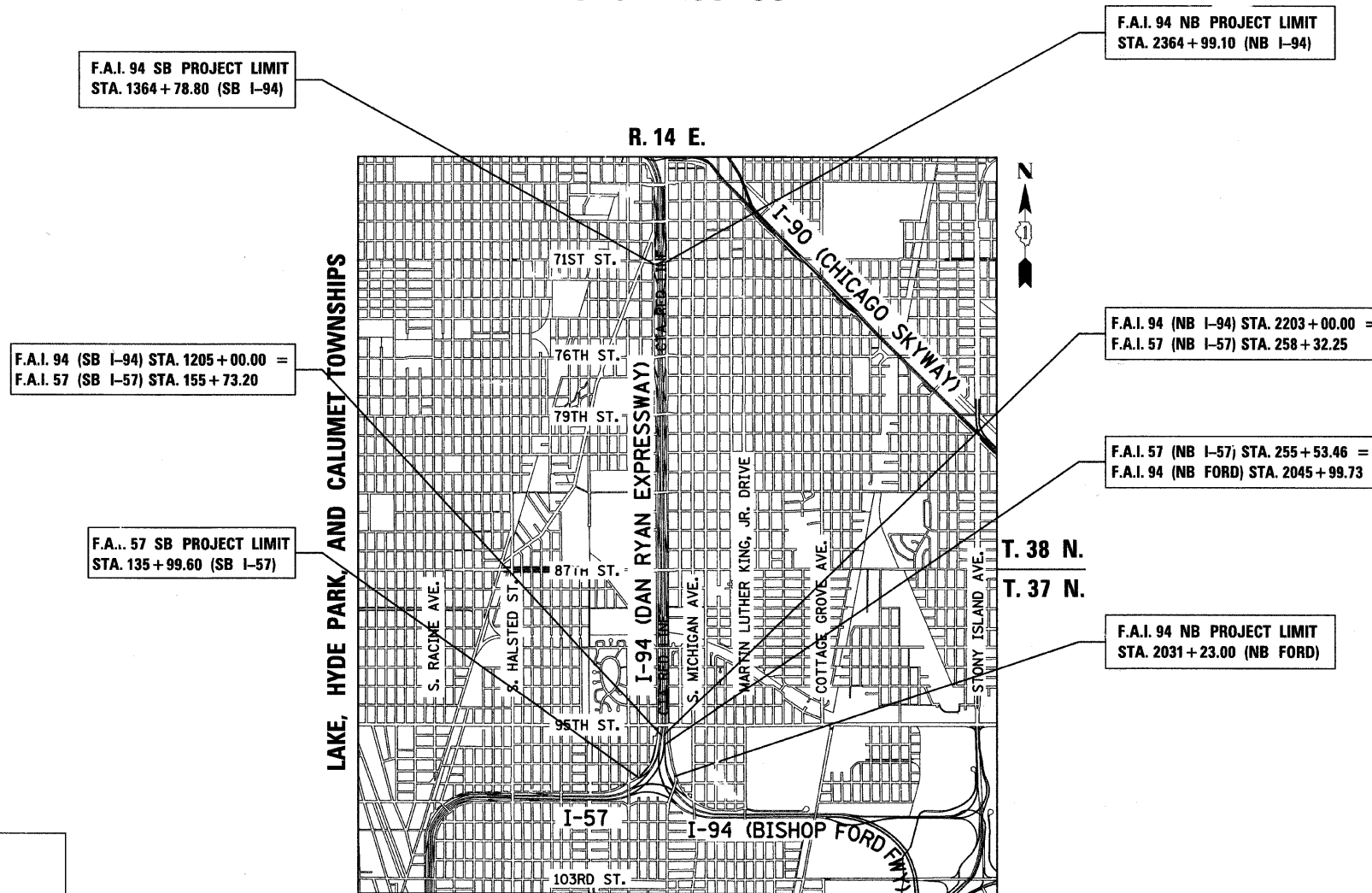
COOK COUNTY

C-91-265-05

F.A.I. RTE.	SECTION	COUNTY	TOTAL SHEETS	SHEET NO.
94	2005-036 I	COOK	45	1
FED. ROAD DIST. NO.	ILLINOIS	FED. AID PROJECT		
D-91-265-05			60A07	



LOCATION OF SECTION INDICATED THUS: -



F.A.I. 94 (SB I-94) STA. 1205+00.00 =
F.A.I. 57 (SB I-57) STA. 155+73.20

F.A.I. 57 SB PROJECT LIMIT
STA. 135+99.60 (SB I-57)

F.A.I. 94 NB PROJECT LIMIT
STA. 2364+99.10 (NB I-94)

F.A.I. 94 (NB I-94) STA. 2203+00.00 =
F.A.I. 57 (NB I-57) STA. 258+32.25

F.A.I. 57 (NB I-57) STA. 255+53.46 =
F.A.I. 94 (NB FORD) STA. 2045+99.73

F.A.I. 94 NB PROJECT LIMIT
STA. 2031+23.00 (NB FORD)

LOCATION MAP

0 1/2 MILE 1 MILE
GROSS LENGTH OF PROJECT = 35,907.02 FT. = 6.80 MI.
MAP SCALE: 1" = 1/2 MILE
NET LENGTH OF PROJECT = 35,907.02 FT. = 6.80 MI.

STATE OF ILLINOIS
DEPARTMENT OF TRANSPORTATION
DIVISION OF HIGHWAYS

SUBMITTED FEBRUARY 11, 2009

Diane M. O'Keefe DE
DEPUTY DIRECTOR OF HIGHWAYS, REGION ENGINEER

June 26, 2009
Charles G. Ingersoll PE
ENGINEER OF DESIGN AND ENVIRONMENT

June 26, 2009
Christine M. Reed PE
DIRECTOR OF HIGHWAYS, CHIEF ENGINEER

CONTRACT 39

Signed *Dean A. Kieseling*
Dean A. Kieseling, P.E., Ill. Lic. No. 32957
Expires 11-30-2009
Date FEBRUARY 10, 2009

32957
REGISTERED PROFESSIONAL ENGINEER OF ILLINOIS

TYLIN INTERNATIONAL
PRINTED BY THE AUTHORITY OF THE STATE OF ILLINOIS