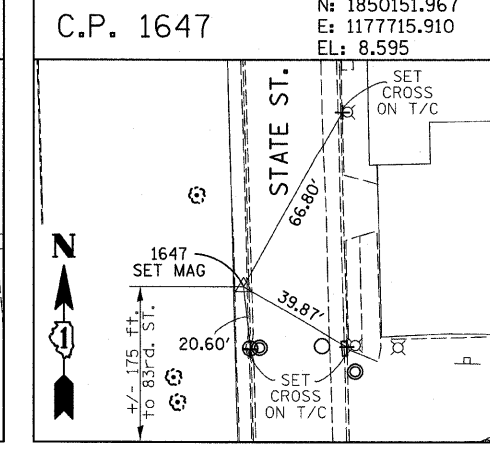
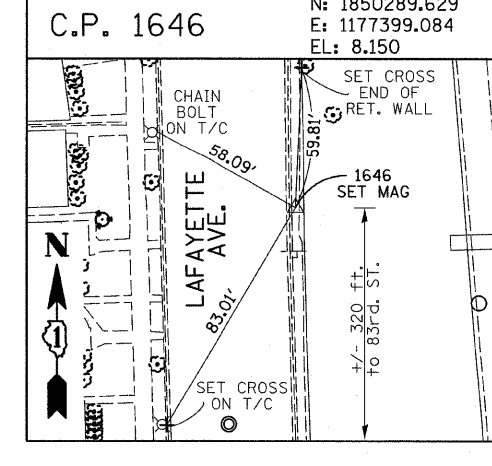
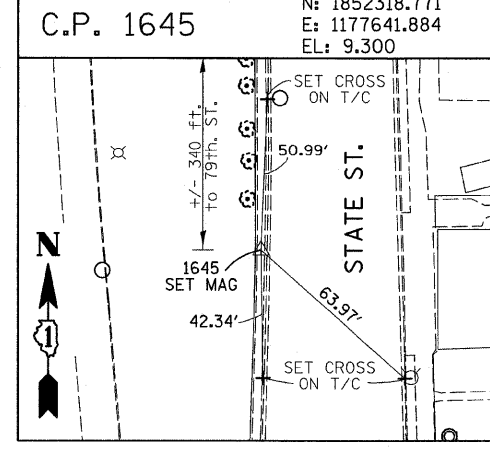
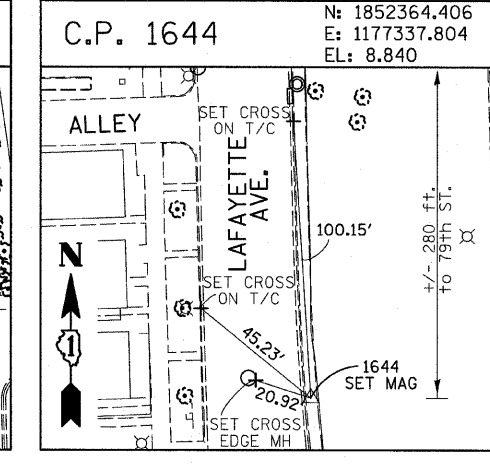
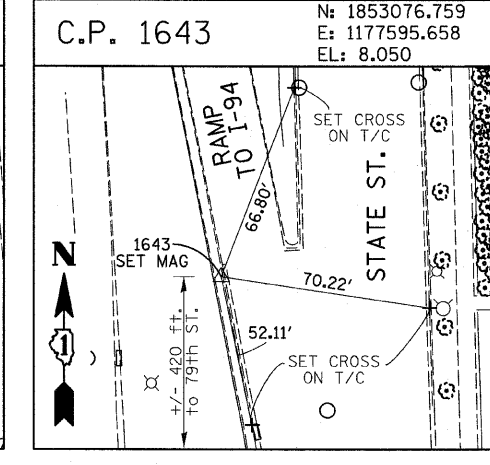
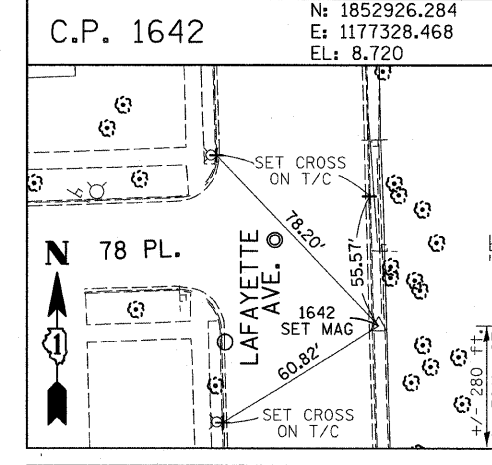
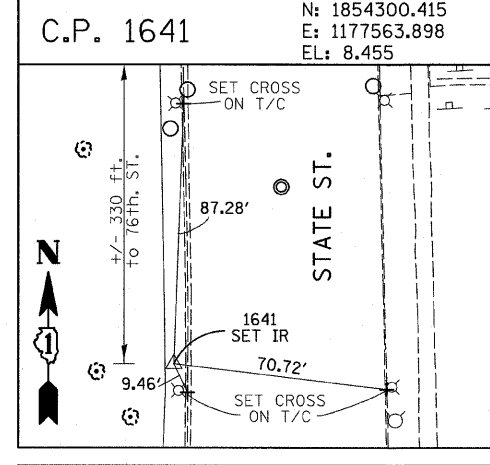
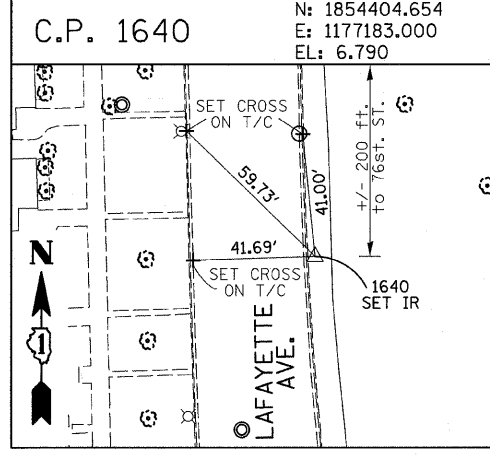
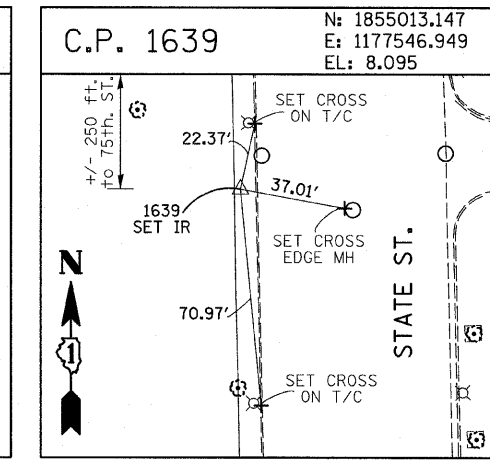
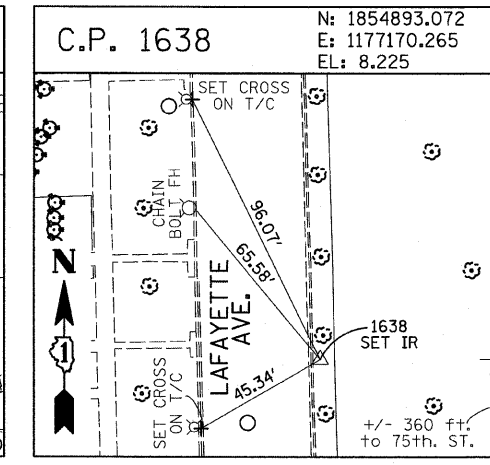
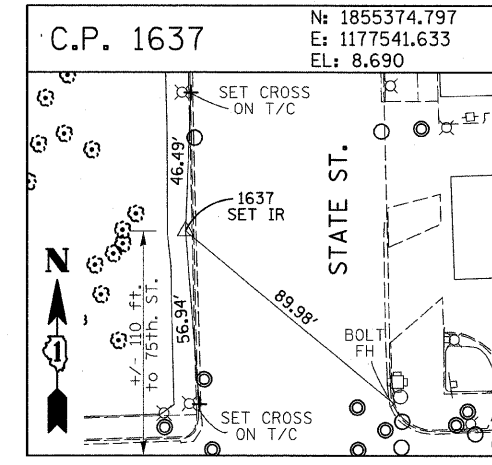
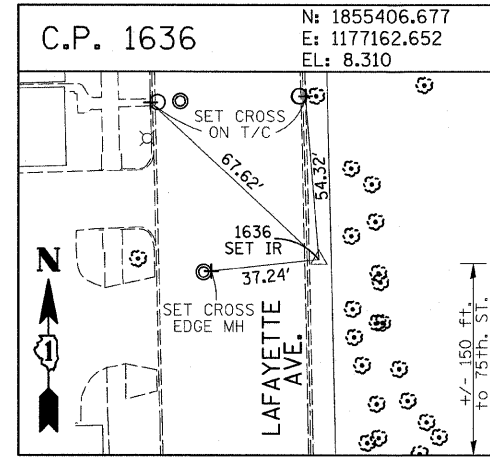
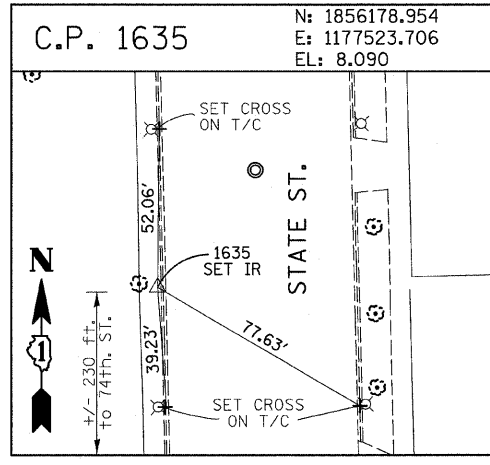
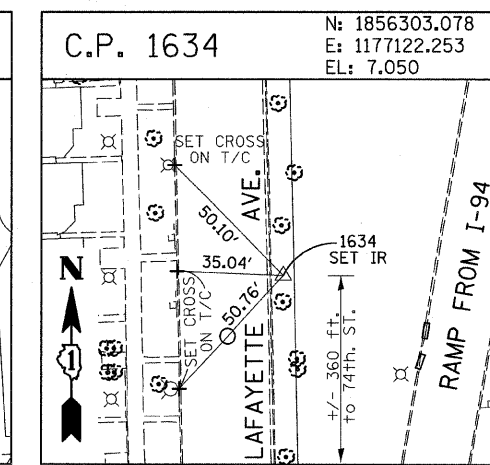
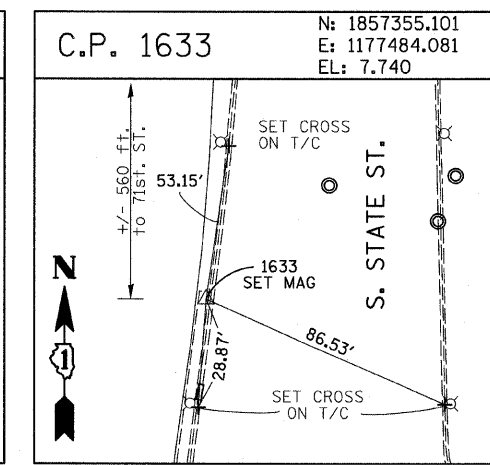
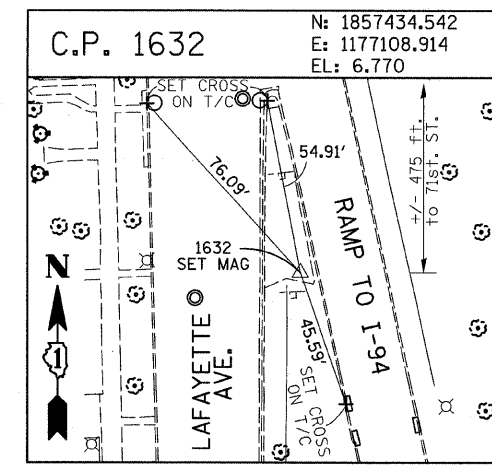
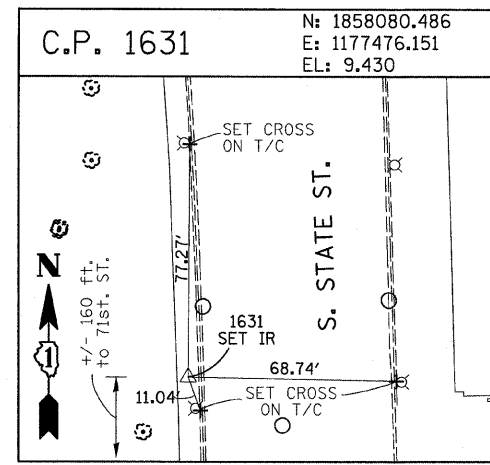
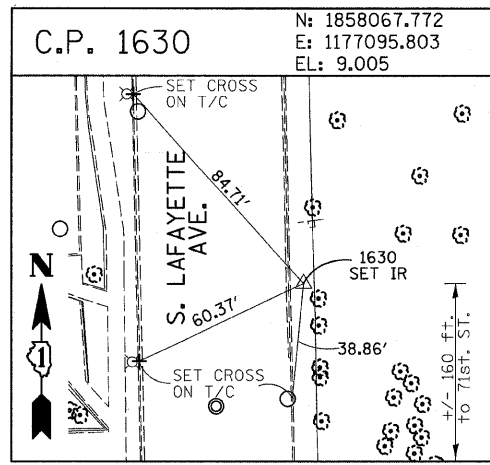


F.A.I. RTE.	SECTION	COUNTY	TOTAL SHEETS	SHEET NO.
94	2005-036 I	COOK	45	11
STA. 135+99.6 (SB I-57)		TO STA. 136+478.8 (SB RYAN)		
STA. 2031+23.0 (NB FORD)		TO STA. 2364+99.1 (NB RYAN)		
FED. ROAD DIST. NO.		ILLINOIS	FED. AID PROJECT	

60A07



American Surveying Consultants, P.C.
 1427 Plank Rd., Suite 100, Naperville, IL 60563
 (630) 335-1100

REVISIONS	
NAME	DATE

ILLINOIS DEPARTMENT OF TRANSPORTATION
 F.A.I. 94 (DAN RYAN EXPRESSWAY)
 SURVEY TIES FOR CONTROL POINTS
 SHEET 3 OF 7

SCALE: 1"=30'
 DATE: FEBRUARY 13, 2009
 DRAWN BY: GSP
 CHECKED BY: MMW

3/19/2009 11:45:33 AM