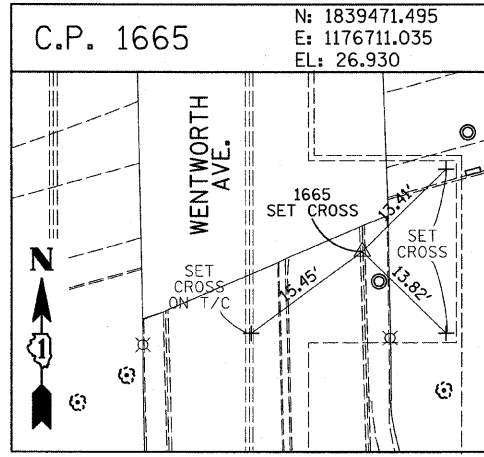
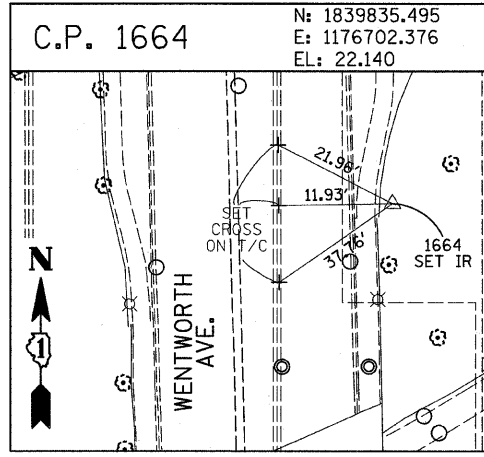
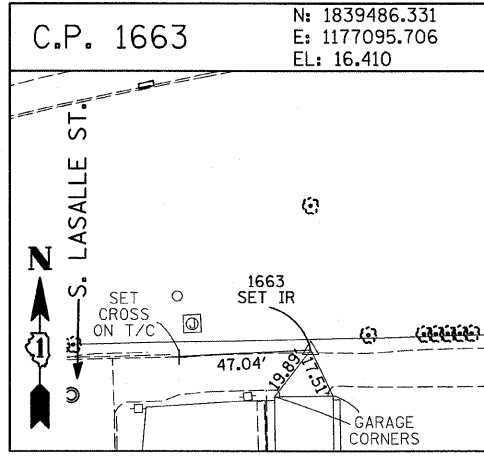
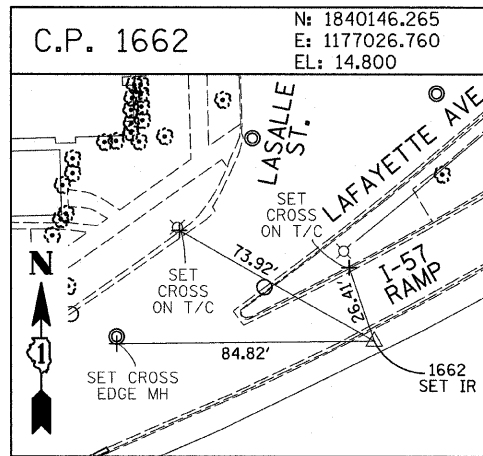
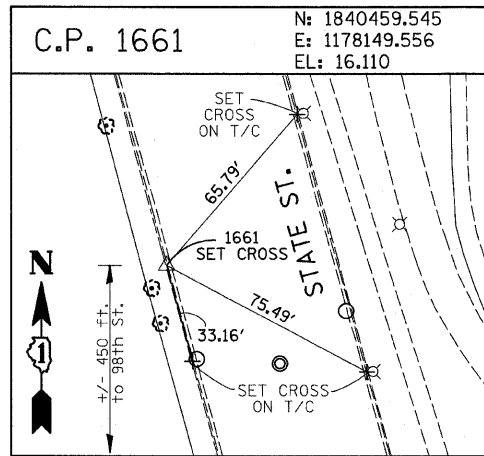
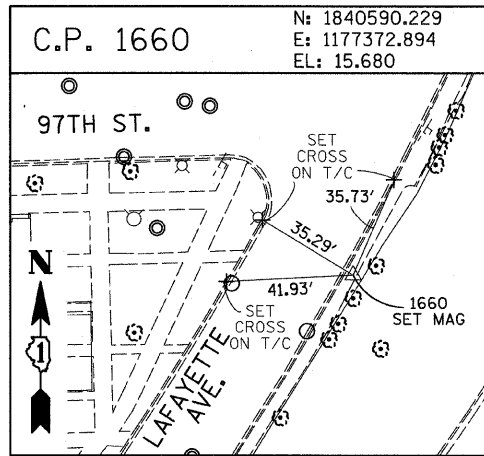
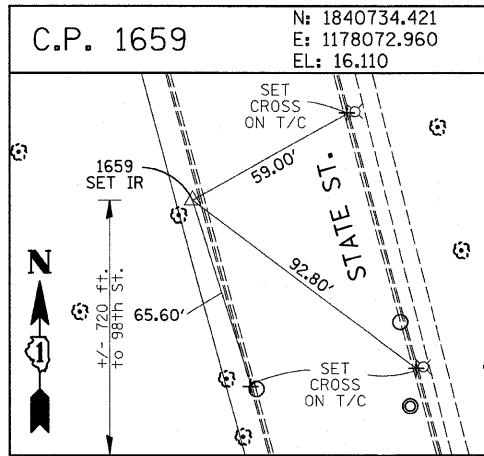
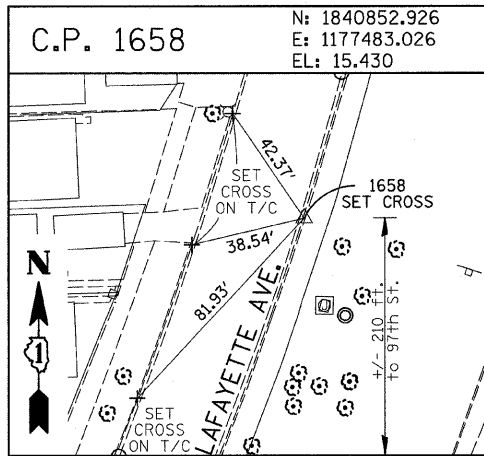
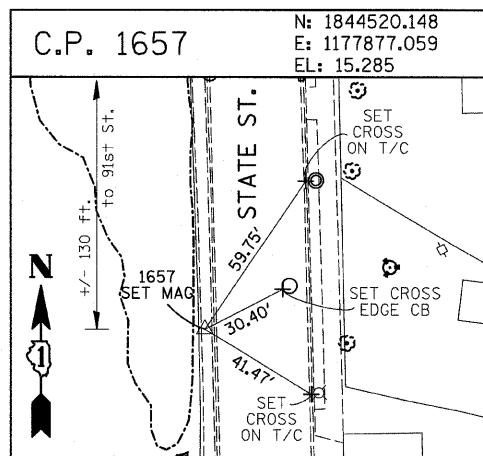
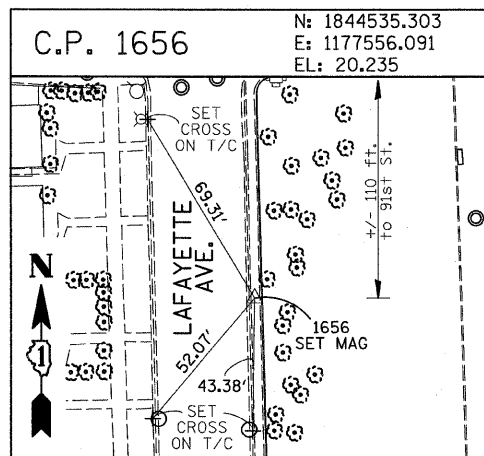
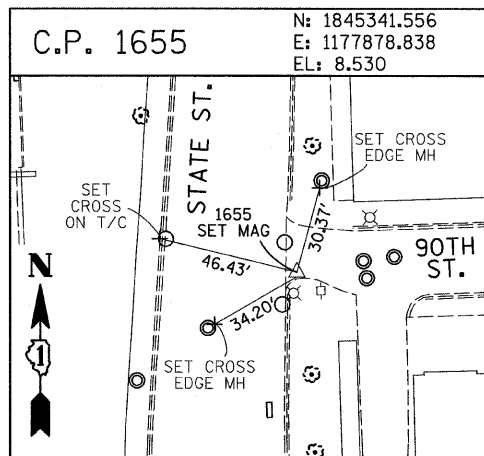
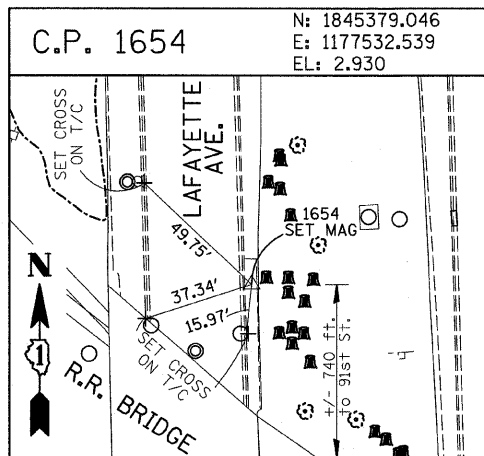
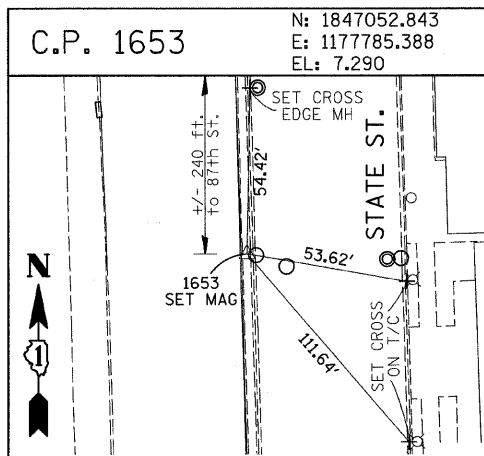
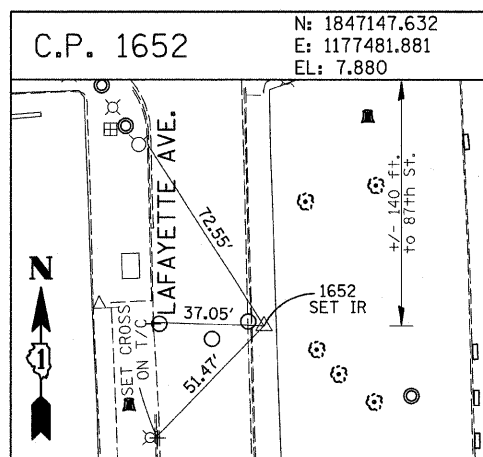
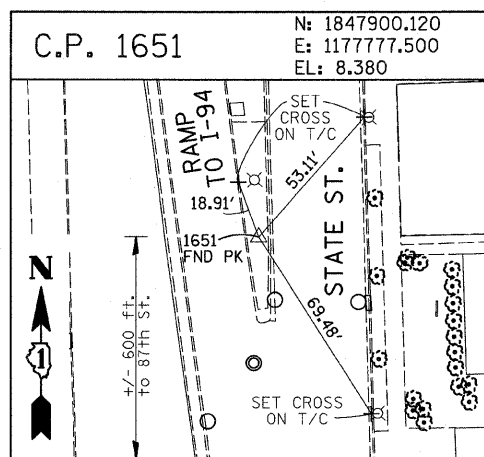
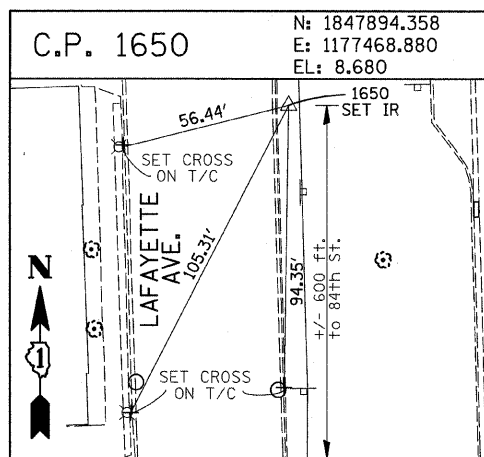
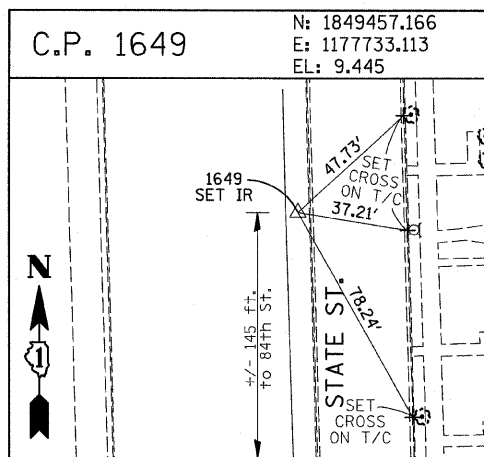
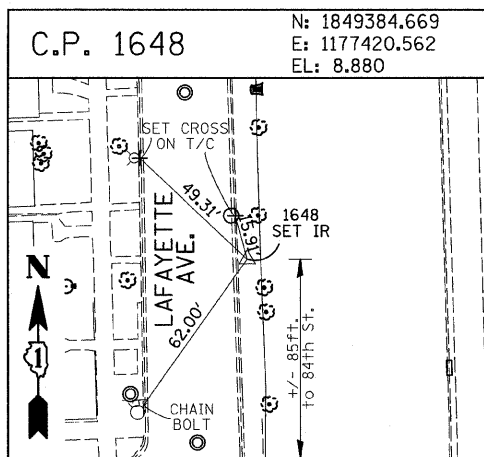


F.A.I. RTE.	SECTION	COUNTY	TOTAL SHEETS	SHEET NO.
94	2005-036 I	COOK	45	12
STA. 135+93.6 (SB I-57)		TO STA. 136+78.8 (SB RYAN)		
FED. ROAD DIST. NO.		ILLINOIS	FED. AID PROJECT	

60A07



American Surveying Consultants, P.C.
SURVEYORS-ENGINEERS-SCIENTISTS-MAPPING SCIENTISTS
1637 PLOUM RD., DEERFIELD, IL 60015 630.954.1100 FAX 630.954.1101

REVISIONS	
NAME	DATE

ILLINOIS DEPARTMENT OF TRANSPORTATION
F.A.I. 94 (DAN RYAN EXPRESSWAY)
SURVEY TIES FOR CONTROL POINTS
SHEET 4 OF 7

SCALE: 1"=30'
DATE: FEBRUARY 13, 2009
DRAWN BY: GSP
CHECKED BY: MMW

3/19/2009 11:45:36 AM