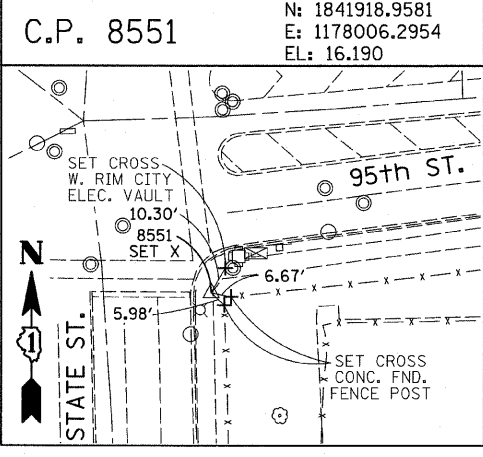
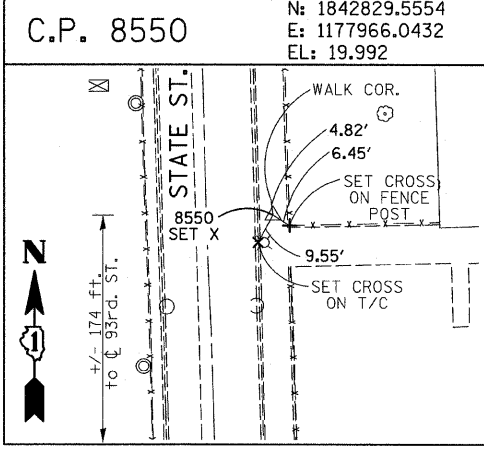
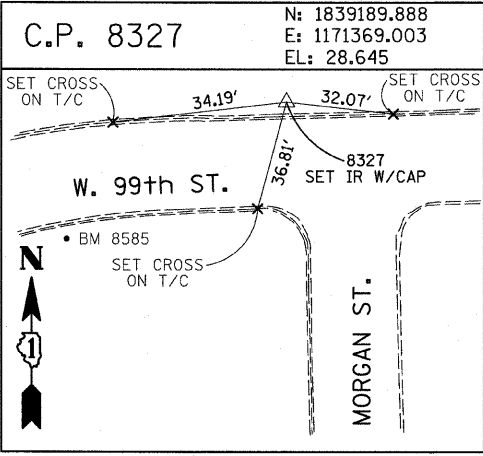
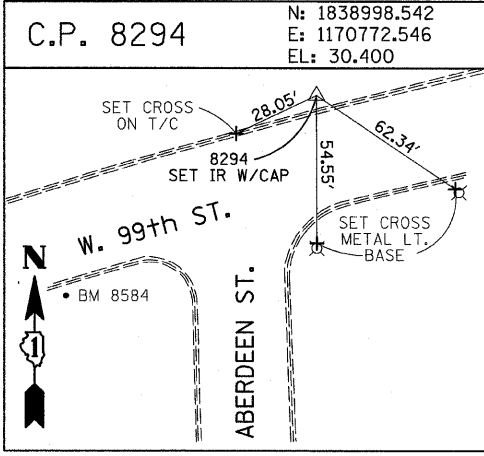
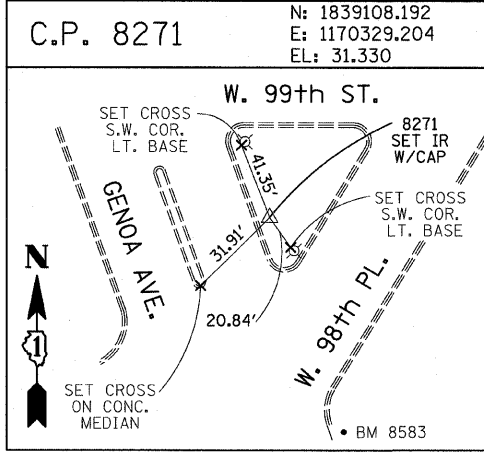
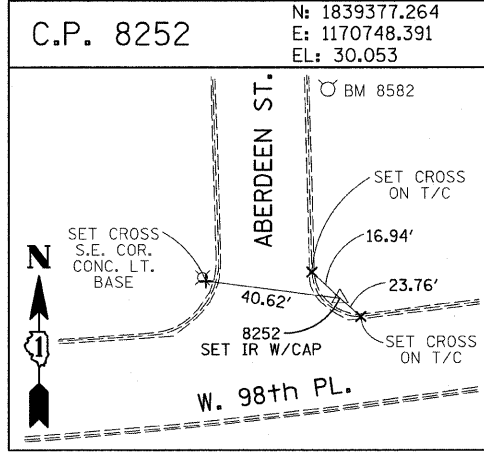
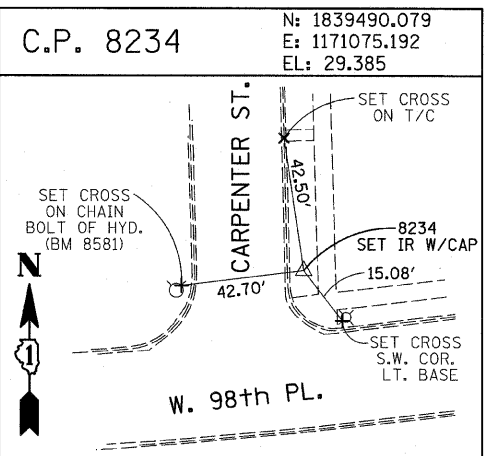
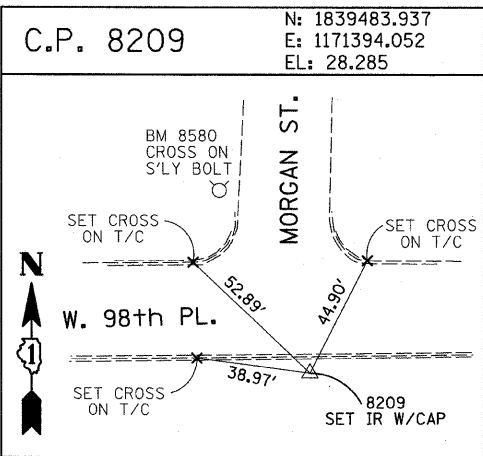
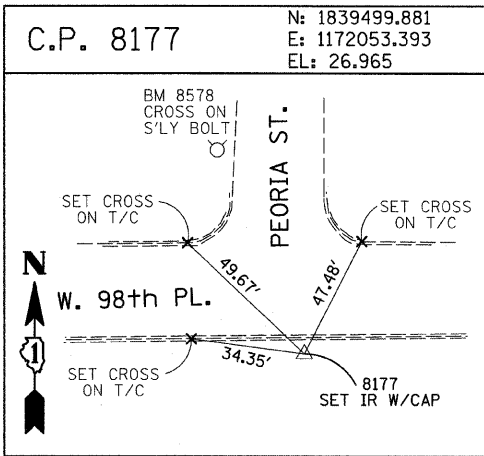
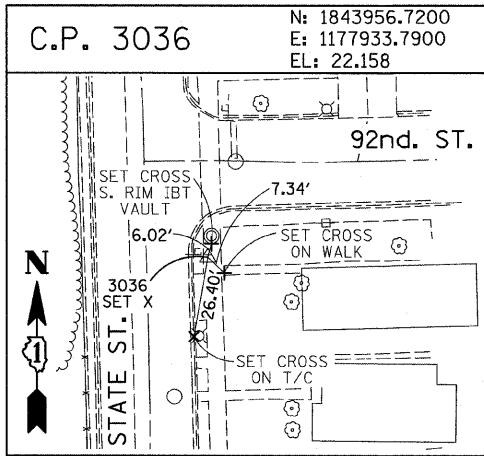
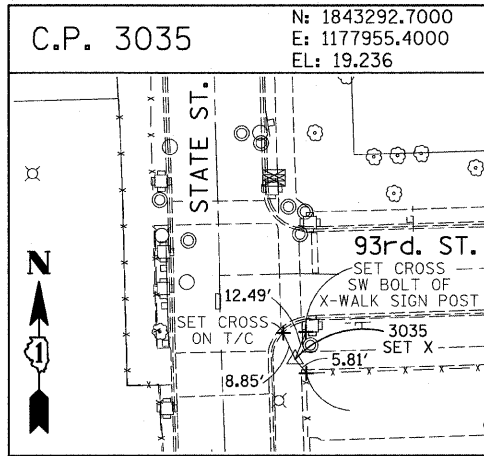
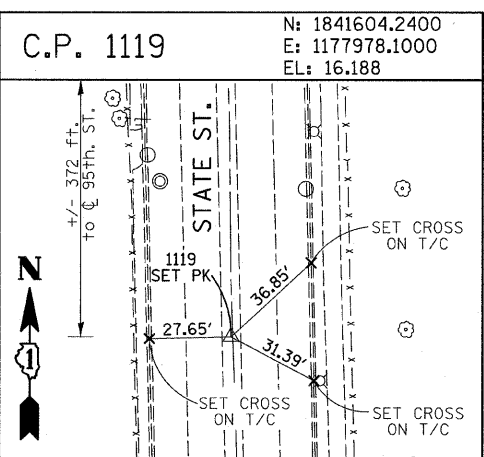
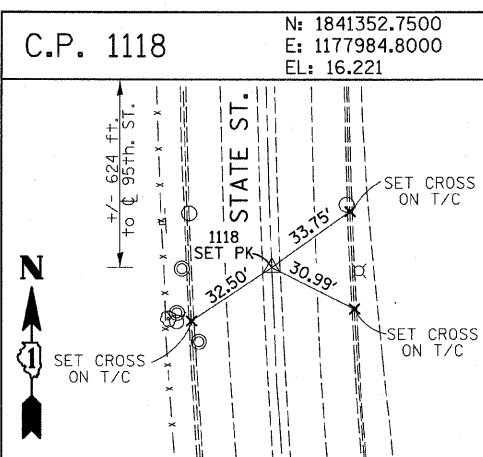
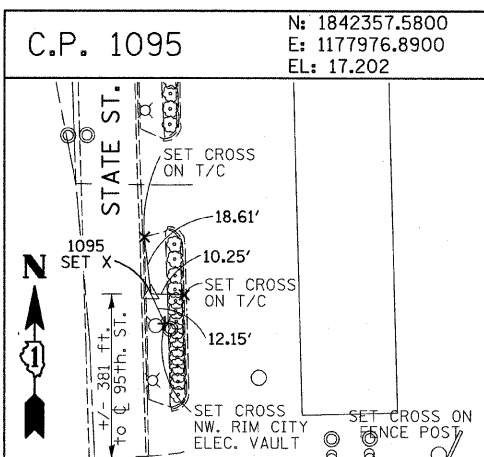
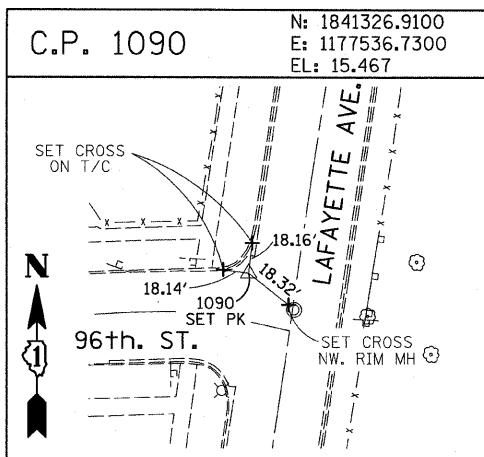
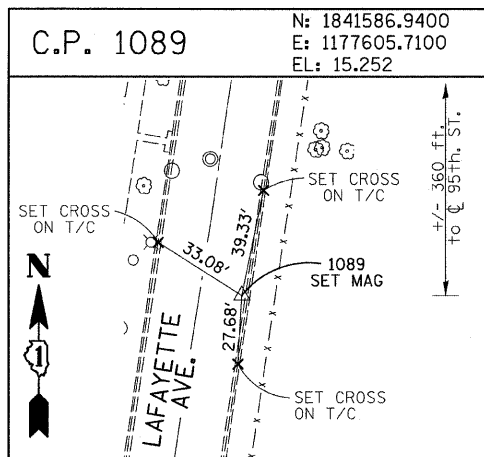


F.A.I. RTE.	SECTION	COUNTY	TOTAL SHEETS	SHEET NO.
94	2005-036 I	COOK	45	14
STA. 135+99.6 (SB I-57) TO STA. 1364+78.8 (SB RYAN)				
FED. ROAD DIST. NO. ILLINOIS FED. AID PROJECT				

60A07



American Surveying Consultants, P.C.  
1037 Piquette Rd., Chicago, IL 60641

REVISIONS	
NAME	DATE

ILLINOIS DEPARTMENT OF TRANSPORTATION  
F.A.I. 94 (DAN RYAN EXPRESSWAY)  
SURVEY TIES FOR CONTROL POINTS  
SHEET 6 OF 7

SCALE: 1"=30'  
DATE: FEBRUARY 13, 2009  
DRAWN BY: GSP  
CHECKED BY: MMW

3/19/2009 11:45:42 AM