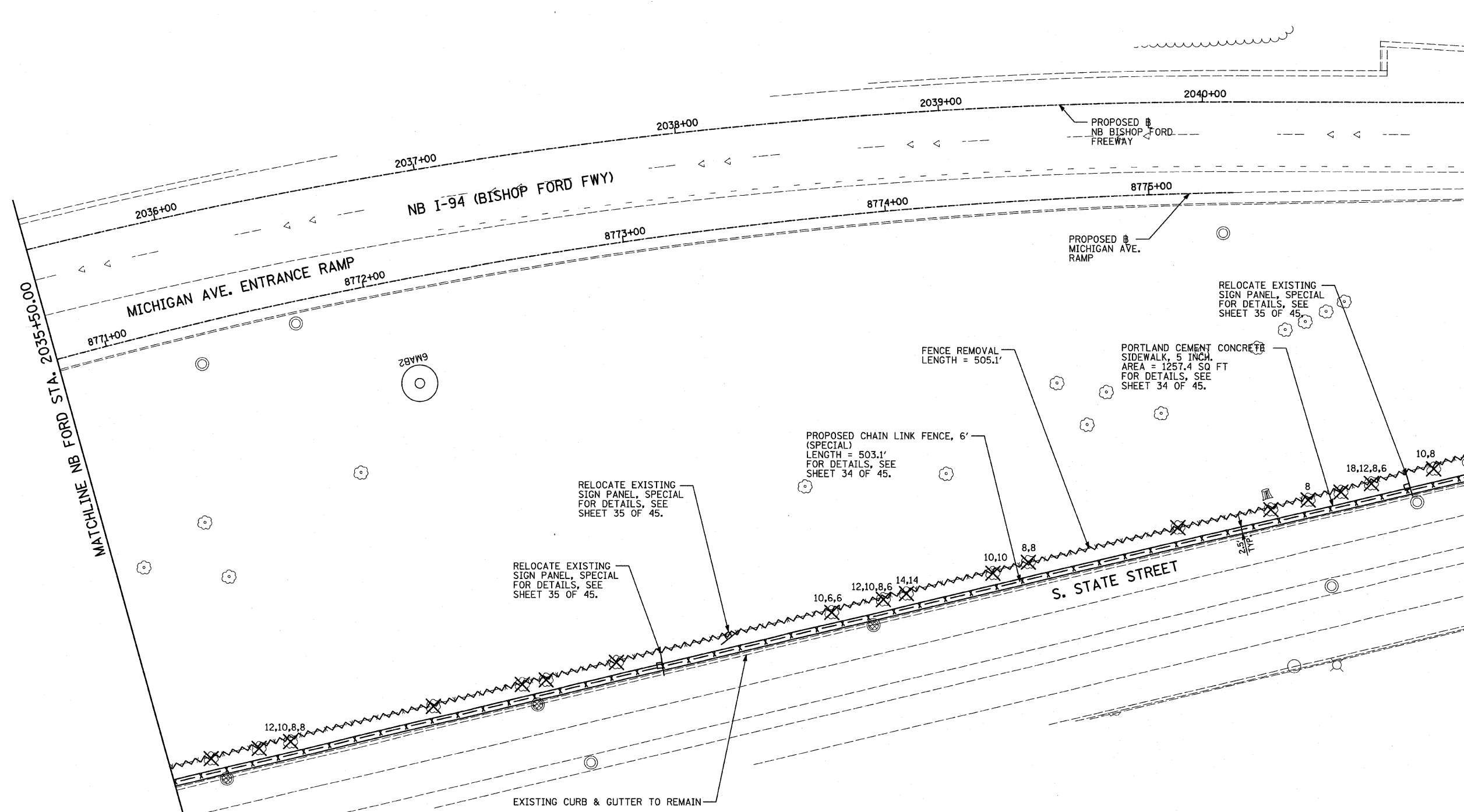


F.A.I. RTE.	SECTION	COUNTY	TOTAL SHEETS	SHEET NO.
94	2005-036 I	COOK	45	17
STA. 135+98.6 (SB I-57) TO STA. 1364+78.8 (SB RYAN)		TO STA. 2364+99.1 (NB RYAN)		
STA. 2031+23.0 (NB FORD)		2364+99.1 (NB RYAN)		
FED. ROAD DIST. NO.		ILLINOIS FED. AID PROJECT		

60A07



MATCHLINE NB FORD STA. 2041+00.00

MATCHLINE NB FORD STA. 2035+50.00

RELOCATE EXISTING SIGN PANEL, SPECIAL FOR DETAILS, SEE SHEET 35 OF 45.

RELOCATE EXISTING SIGN PANEL, SPECIAL FOR DETAILS, SEE SHEET 35 OF 45.

PROPOSED CHAIN LINK FENCE, 6' (SPECIAL) LENGTH = 503.1' FOR DETAILS, SEE SHEET 34 OF 45.

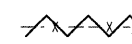
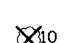

FENCE REMOVAL LENGTH = 505.1'

PORTLAND CEMENT CONCRETE SIDEWALK, 5 INCH. AREA = 1257.4 SQ FT FOR DETAILS, SEE SHEET 34 OF 45.

RELOCATE EXISTING SIGN PANEL, SPECIAL FOR DETAILS, SEE SHEET 35 OF 45.

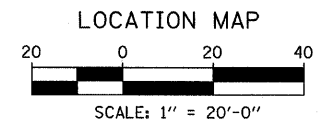
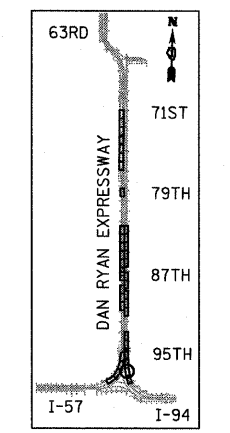
EXISTING CURB & GUTTER TO REMAIN

LEGEND:

-  FENCE REMOVAL
-  TREE REMOVAL (UNITS) (NO UNIT SHOWN = ≤ 6 OR CALLED OUT)
-  INLET FILTER

NOTES:

- THE CONTRACTOR SHALL USE THE EXCAVATED MATERIALS FROM THE SIDEWALK CONSTRUCTION TO BACKFILL THE AREA BEHIND THE SIDEWALK. A QUANTITY OF "SEEDING, CLASS 2A" HAS BEEN PROVIDED TO RESEED THE BACKFILLED AREAS.
- FOR FENCE MOUNTED ON CONCRETE PAD DETAILS, SEE SHEET 34 OF 45.



REVISIONS	
NAME	DATE

ILLINOIS DEPARTMENT OF TRANSPORTATION
F.A.I. 94 (DAN RYAN EXPRESSWAY)
PROPOSED PLAN
ALONG STATE STREET FROM
98TH ST. TO 95TH ST.
NB FORD STA. 2035+50 TO STA. 2041+00

SCALE: 1"=20'
DATE: FEBRUARY 13, 2009

DRAWN BY: MAF, AMB
CHECKED BY: TGB, MI

TYLIN INTERNATIONAL

3/19/2009 11:45:51 AM