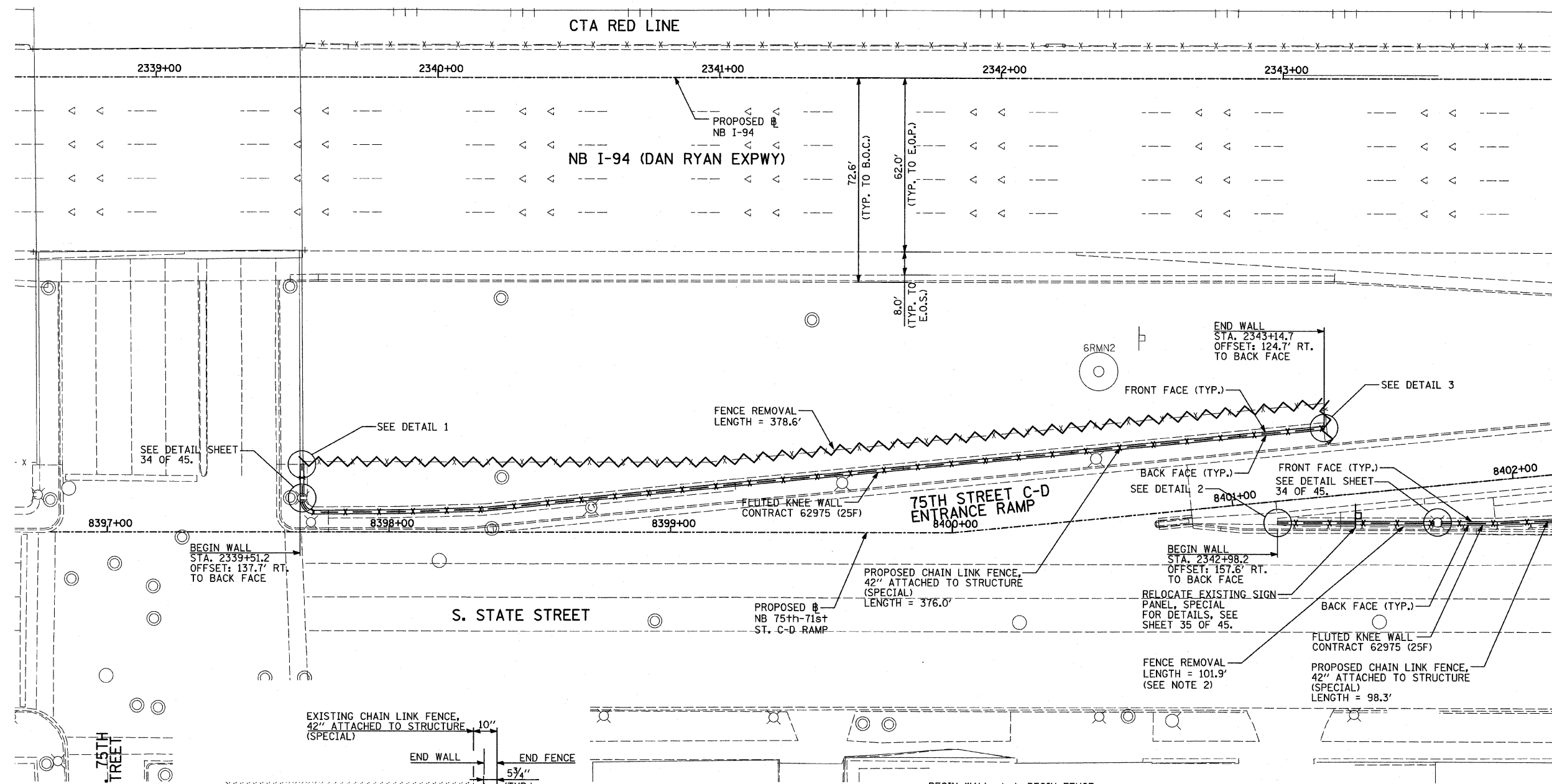
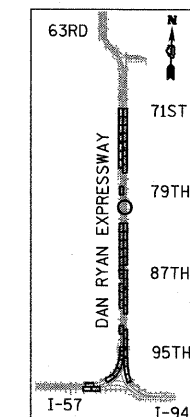


F.A.I. RTE.	SECTION	COUNTY	TOTAL SHEETS	SHEET NO.
94	2005-036 I	COOK	45	20
STA. 135+99.6 (SB I-57) TO STA. 1364+78.8 (SB RYAN)				
STA. 2031+23.0 (NB FORD) TO STA. 2364+99.1 (NB RYAN)				
FED. ROAD DIST. NO.		ILLINOIS FED. AID PROJECT		

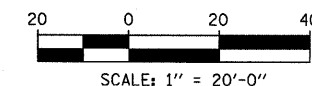
60A07



MATCHLINE NB STA. 2344+00.00



LOCATION MAP

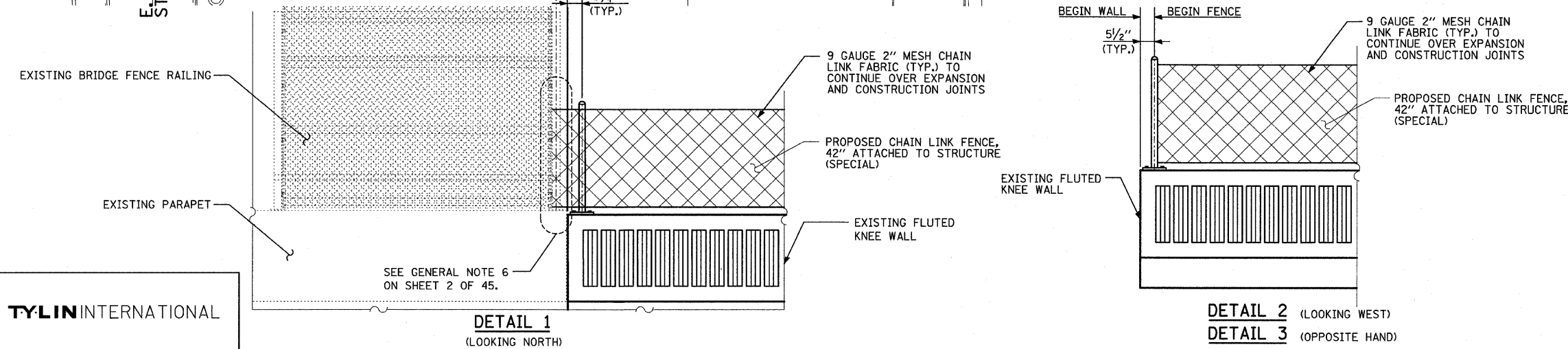


**LEGEND:**

FENCE REMOVAL

**NOTES:**

1. FOR CHAIN LINK FENCE, 42" ATTACHED TO STRUCTURE (SPECIAL), SEE SHEET 33 OF 45.
2. REMOVAL PATTERN FOR EXISTING FENCE NOT SHOWN FOR CLARITY.



**DETAIL 1**  
(LOOKING NORTH)

**DETAIL 2** (LOOKING WEST)  
**DETAIL 3** (OPPOSITE HAND)

REVISIONS	
NAME	DATE

ILLINOIS DEPARTMENT OF TRANSPORTATION  
**F.A.I. 94 (DAN RYAN EXPRESSWAY)**  
**PROPOSED PLAN**  
 NB I-94 (DAN RYAN EXPRESSWAY)  
 STA. 2338+50.00 TO STA. 2344+00.00  
 CONTRACT 25F LOCATION

SCALE: 1"=20'  
 DATE: FEBRUARY 13, 2009  
 DRAWN BY: MAF, AMB  
 CHECKED BY: TGB, MI

**TYLIN** INTERNATIONAL

SEE GENERAL NOTE 6  
ON SHEET 2 OF 45.

3/19/2009 11:45:56 AM