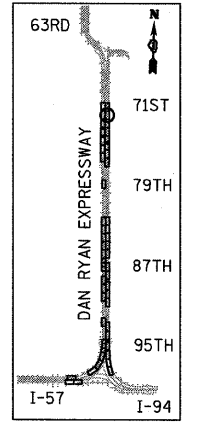
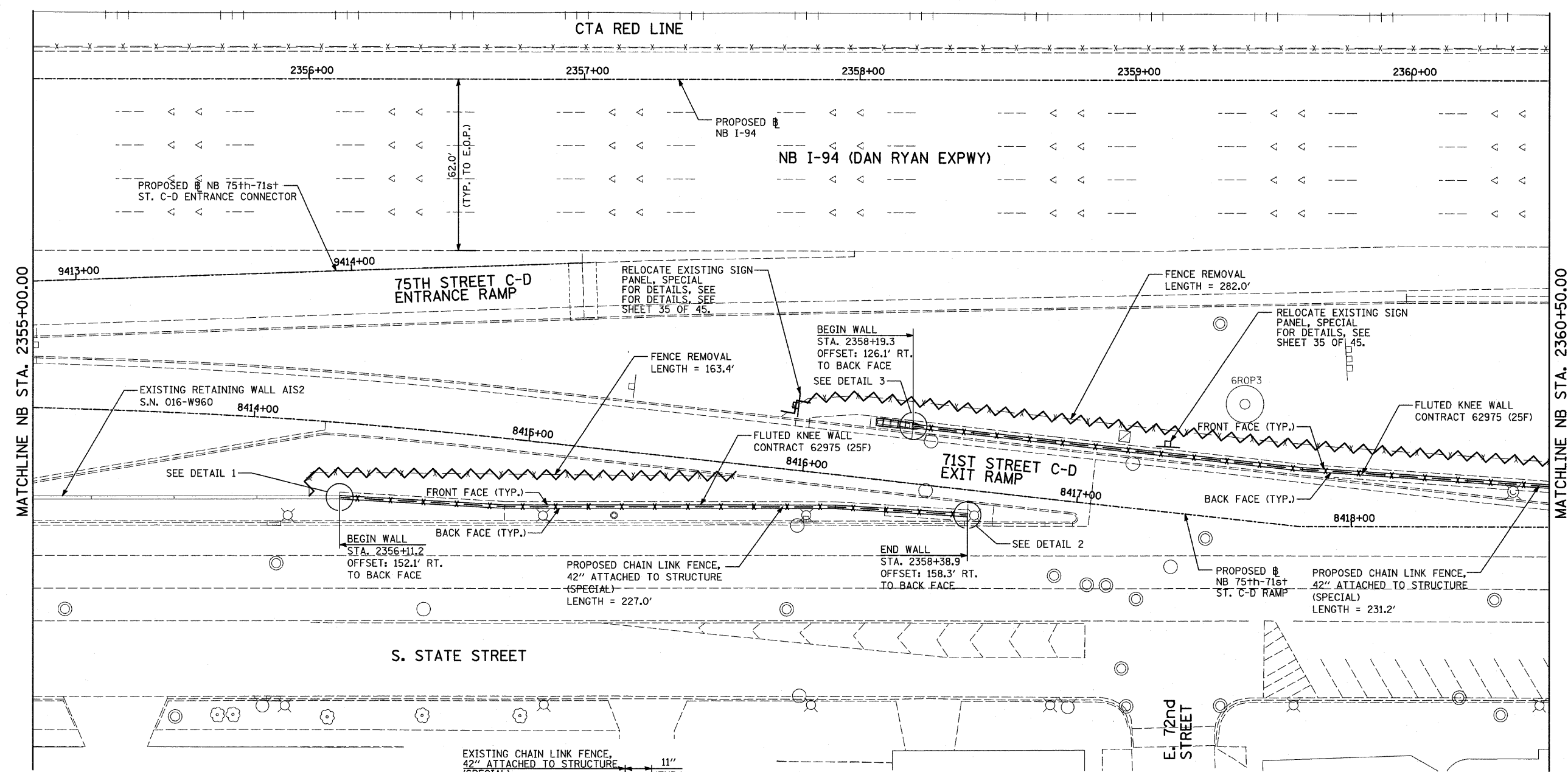
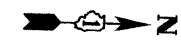
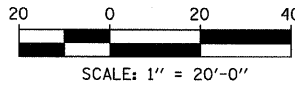


F.A.I. RTE.	SECTION	COUNTY	TOTAL SHEETS	SHEET NO.
94	2005-036 I	COOK	45	23
STA. 135+98.6 (SB I-57) TO STA. 2364+78.8 (SB RYAN)				
2031+23.0 (NB FOR) TO STA. 2364+99.1 (NB RYAN)				
FED. ROAD DIST. NO.		ILLINOIS	FED. AID PROJECT	

60A07



LOCATION MAP

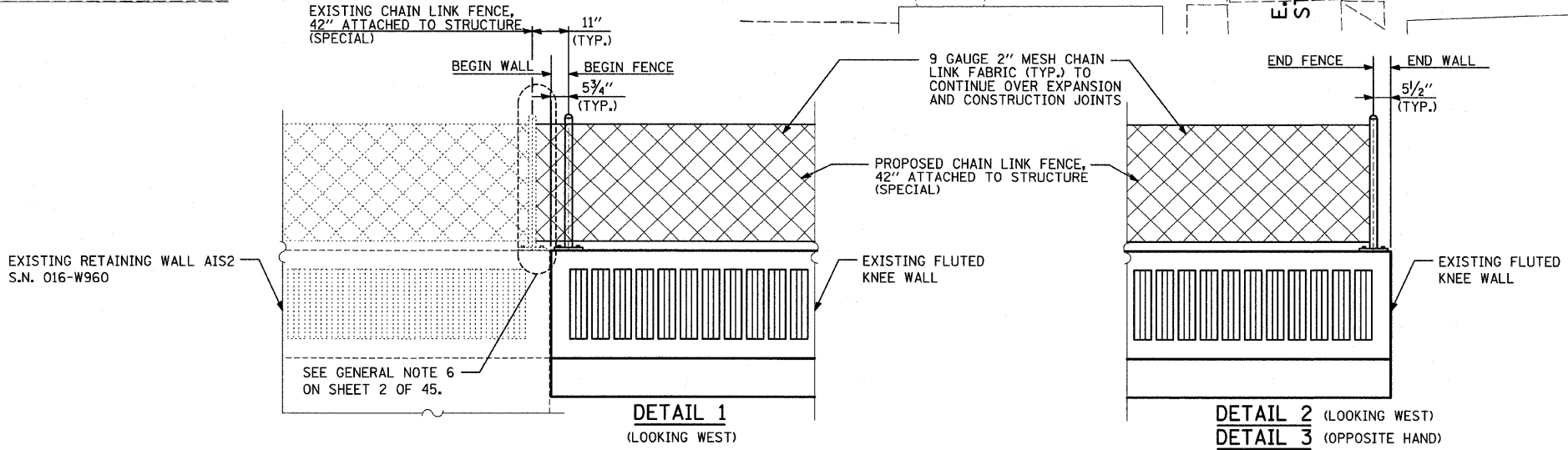


LEGEND:

FENCE REMOVAL

NOTES:

- FOR CHAIN LINK FENCE, 42" ATTACHED TO STRUCTURE (SPECIAL), SEE SHEET 33 OF 45.



DETAIL 1
(LOOKING WEST)

DETAIL 2 (LOOKING WEST)
DETAIL 3 (OPPOSITE HAND)

REVISIONS	
NAME	DATE

ILLINOIS DEPARTMENT OF TRANSPORTATION
F.A.I. 94 (DAN RYAN EXPRESSWAY) PROPOSED PLAN
NB I-94 (DAN RYAN EXPRESSWAY)
STA. 2355+00.00 TO STA. 2360+50.00
CONTRACT 25F LOCATION

SCALE: 1"=20'
DATE: FEBRUARY 13, 2009

DRAWN BY: MAF, AMB
CHECKED BY: TGB, MI

TYLIN INTERNATIONAL

P:\0227\3\road\c39\pp251\1043adg7 3/19/2009 11:46:00 AM