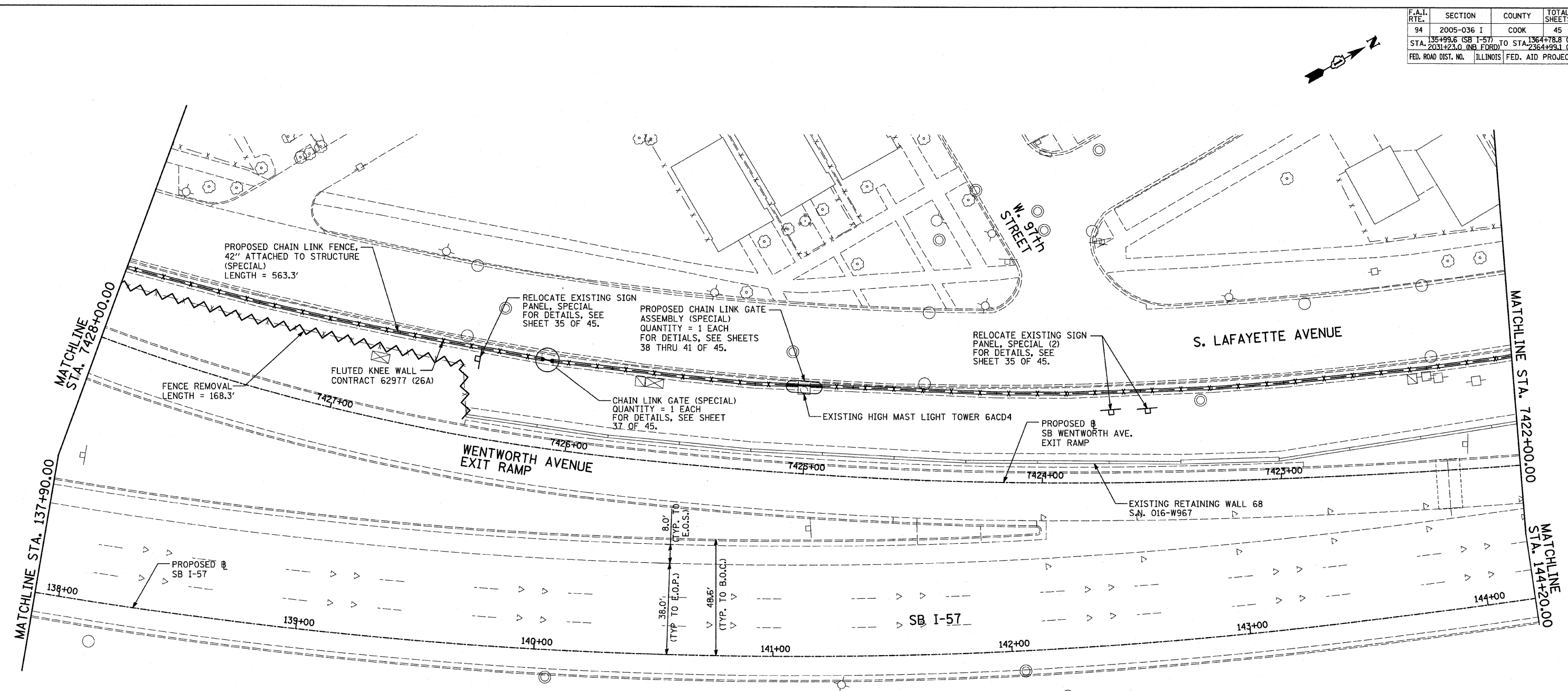


F.A.I. RTE.	SECTION	COUNTY	TOTAL SHEETS	SHEET NO.
94	2005-036 I	COOK	45	26
STA. 135+99.6 (SB I-57)		TO STA. 136+78.8 (SB RYAN)		
STA. 2031+23.0 (NB I-57)		TO STA. 238+493.1 (NB RYAN)		
FED. ROAD DIST. NO.		ILLINOIS FED. AID PROJECT		

60A07

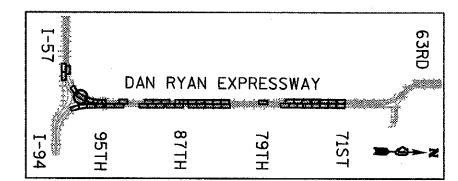


LEGEND:

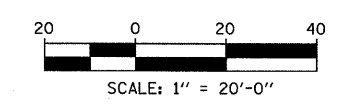
FENCE REMOVAL

NOTES:

1. FOR CHAIN LINK FENCE, 42" ATTACHED TO STRUCTURE (SPECIAL), SEE SHEET 33 OF 45.
2. FOR PROPOSED CHAIN LINK GATE ASSEMBLY (SPECIAL), SEE SHEET 38 THRU 41 OF 45.
3. FOR PROPOSED CHAIN LINK GATE (SPECIAL), SEE SHEET 37 OF 45.



LOCATION MAP



REVISIONS	
NAME	DATE

ILLINOIS DEPARTMENT OF TRANSPORTATION
 F.A.I. 94 (DAN RYAN EXPRESSWAY)
 PROPOSED PLAN
 SB I-57
 STA. 137+90.00 TO STA. 144+20.00
 CONTRACT 26A LOCATION

SCALE: 1"=20'
 DATE: FEBRUARY 13, 2009

DRAWN BY: AMB, MAF
 CHECKED BY: TGB, MI

TYLIN INTERNATIONAL

3/19/2009 11:46:23 AM