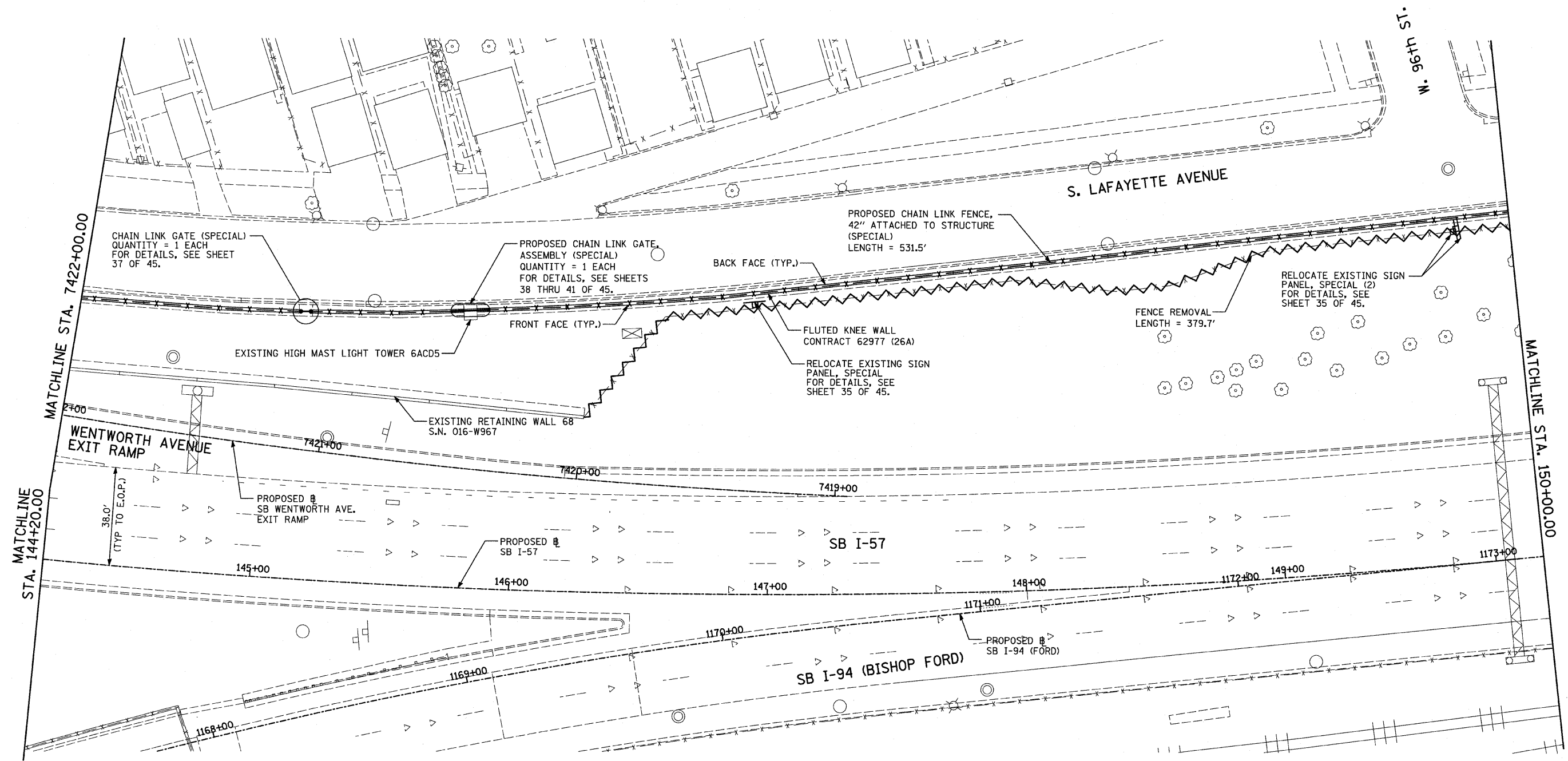


F.A.I. RTE.	SECTION	COUNTY	TOTAL SHEETS	SHEET NO.
94	2005-036 I	COOK	45	27
STA. 135+99.6 (SB I-57)		TO STA. 1364+78.8 (SB RYAN)		
STA. 2031+23.0 (NB FORD)		TO STA. 2364+99.1 (NB RYAN)		
FED. ROAD DIST. NO.	ILLINOIS	FED. AID PROJECT		

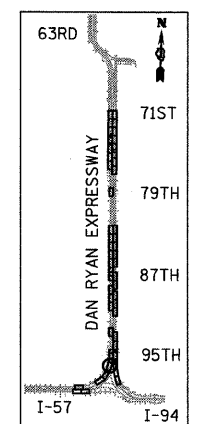
60A07



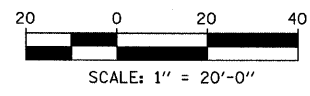
MATCHLINE STA. 150+00.00

MATCHLINE STA. 7422+00.00

MATCHLINE STA. 144+20.00



LOCATION MAP



LEGEND:

FENCE REMOVAL

NOTES:

1. FOR CHAIN LINK FENCE, 42" ATTACHED TO STRUCTURE (SPECIAL), SEE SHEET 33 OF 45.
2. FOR PROPOSED CHAIN LINK GATE ASSEMBLY (SPECIAL), SEE SHEET 38 THRU 41 OF 45.
3. FOR PROPOSED CHAIN LINK GATE (SPECIAL), SEE SHEET 37 OF 45.

TYLIN INTERNATIONAL

REVISIONS	
NAME	DATE

ILLINOIS DEPARTMENT OF TRANSPORTATION
 F.A.I. 94 (DAN RYAN EXPRESSWAY)
PROPOSED PLAN
 SB I-57
 STA. 144+20.00 TO STA. 150+00.00
 CONTRACT 26A LOCATION
 SCALE: 1"=20' DRAWN BY: AMB, MAF
 DATE: FEBRUARY 13, 2009 CHECKED BY: TGB, MI

3/19/2009 11:46:06 AM