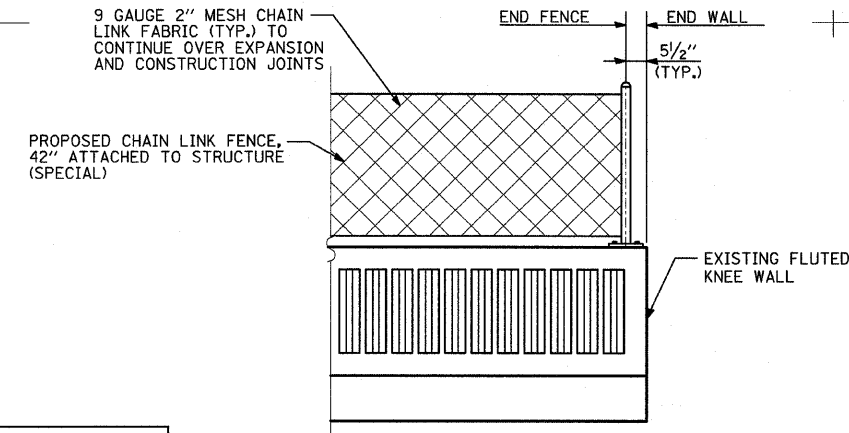
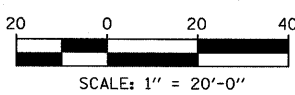
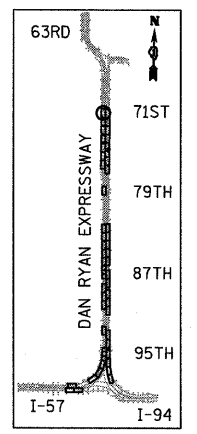
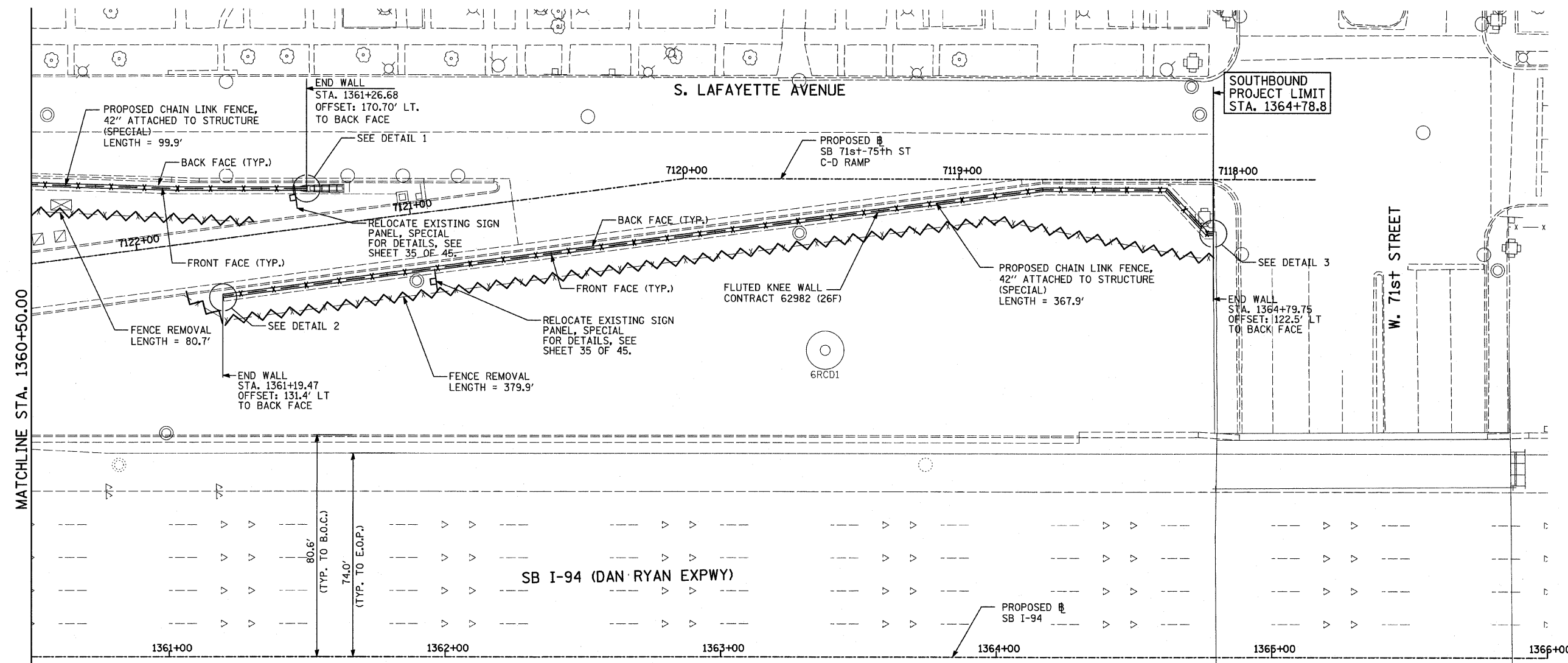
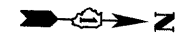
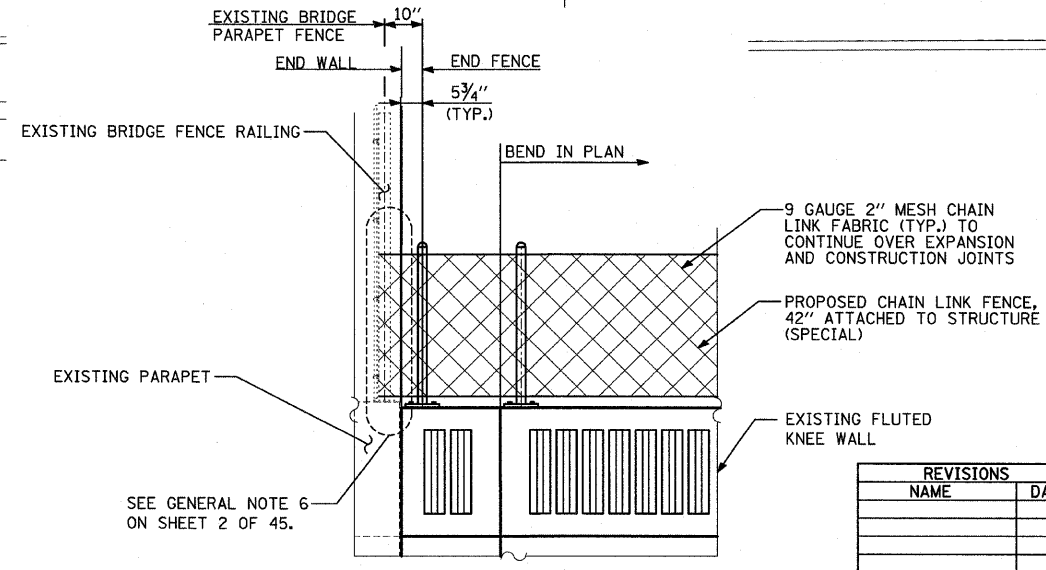


F.A.I. RTE.	SECTION	COUNTY	TOTAL SHEETS	SHEET NO.
94	2005-036 I	COOK	45	32
STA. 135+95.6 (SB I-57) TO STA. 203+223.0 (WB I-94)		1364+78.8 (SB RYAN) TO STA. 236+499.1 (WB RYAN)		
FED. ROAD DIST. NO. ILLINOIS		FED. AID PROJECT		

60A07



DETAIL 1 (LOOKING EAST)
DETAIL 2 (OPPOSITE HAND)



DETAIL 3 (LOOKING EAST)

LEGEND:
 FENCE REMOVAL

NOTES:
 1. FOR CHAIN LINK FENCE, 42" ATTACHED TO STRUCTURE (SPECIAL), SEE SHEET 33 OF 45.

SEE GENERAL NOTE 6 ON SHEET 2 OF 45.

REVISIONS	
NAME	DATE

ILLINOIS DEPARTMENT OF TRANSPORTATION
F.A.I. 94 (DAN RYAN EXPRESSWAY) PROPOSED PLAN
SB I-94 (DAN RYAN EXPRESSWAY)
STA. 1360+50.00 TO STA. 1366+00.00
CONTRACT 26F LOCATION

SCALE: 1"=20'
 DATE: FEBRUARY 13, 2009

DRAWN BY: MAF, AMB, TB
 CHECKED BY: TGB, MI

TYLIN INTERNATIONAL

PA-02-37-3 road to 35 09 26 01 04 30 40 11-46 11 AM 3/19/2009